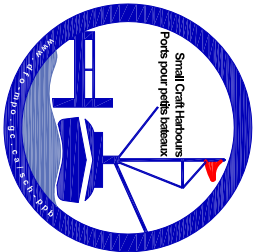
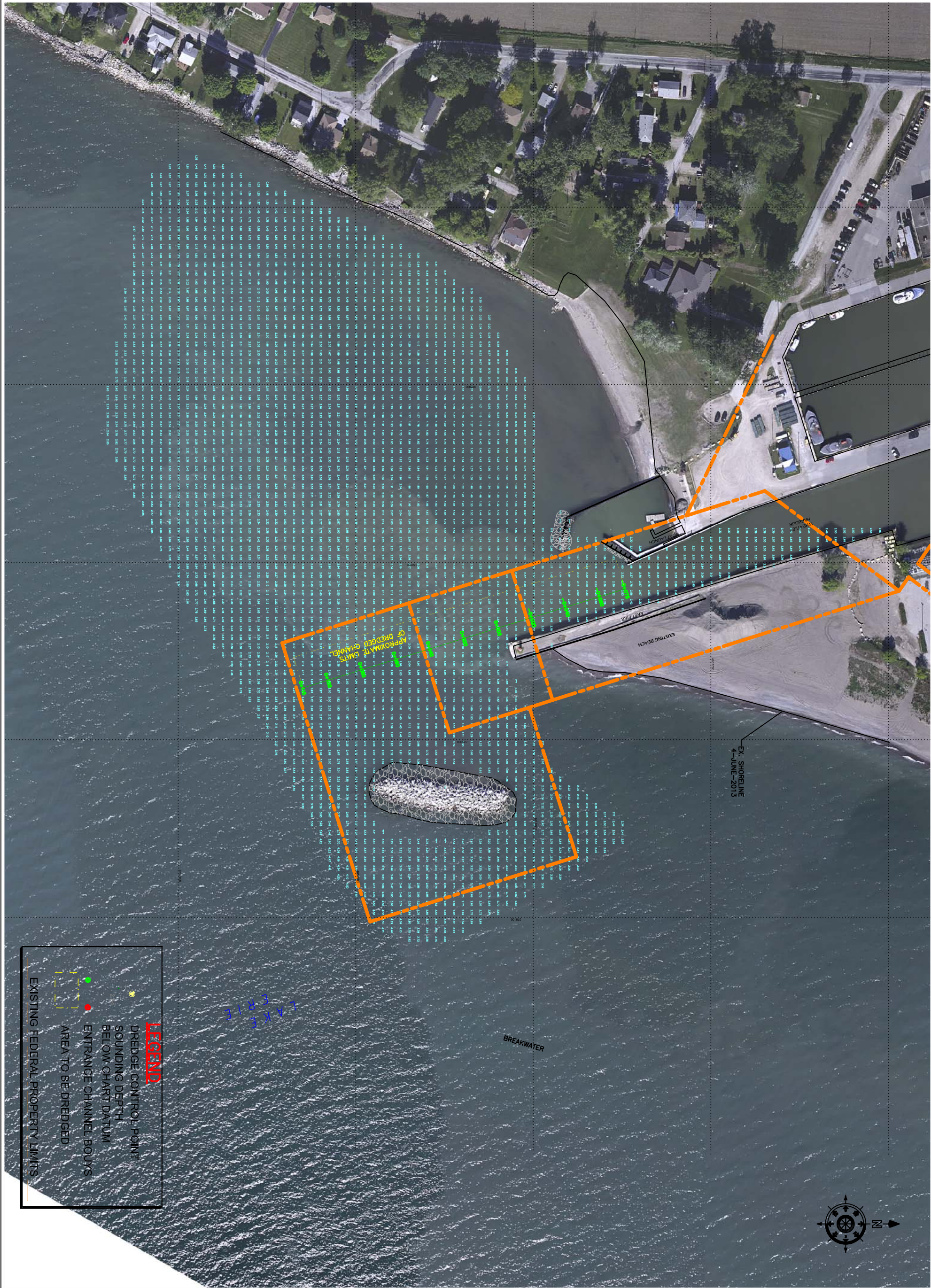


SMALL CRAFT HARBOURS
CENTRAL AND ARCTIC REGION



- NOTES:
1. ALL SOUNDINGS ARE SHOWN IN METERS BELOW CHART DATUM.
 2. SOUNDINGS ARE UPDATED AS OF JUNE 20, 2013
 3. CHART DATUM FOR LAKE ERIE IS 173.5m ABOVE SEA LEVEL.
 4. WATER LEVEL AT THE TIME OF CHART DATUM
 5. COORDINATES FOR HORIZONTAL CONTROL ARE GIVEN ON THE U.T.M. MAPPING PLANE, ZONE 17, USING THE NORTH AMERICAN DATUM OF 1983 (NAD83)



REVISIONS:		DATE:	
1	PRELIMINARY	2012-10-22	

SCALE:		CLASS:	
1:1000			

PROJECT:			
WHEATLEY APPROACH CHANNEL			

DESCRIPTION:			
20130620 SOUNDING SURVEY			

DRAWN:		APPROVED:	
R.C.S			
DATE:		DATE:	
JUN. 2013			

LOCATION:			
WHEATLEY, ON			

DRAWING NO.:		LOCATION CODE:	
MA-01		4873	