

# Champion®

The Dishwashing Machine Specialists

Project \_\_\_\_\_

Item No. \_\_\_\_\_

Quantity \_\_\_\_\_

EBD-48 BLOWER DRYER

## STANDARD FEATURES

- Automatic heat cutoff (when conveyor stops)
- Blower motor, 2-Hp
- Blower-Dryer vent cowl on exit end
- Choice of electric or steam heat
- Control circuit, 120-volt, completely interwired with dishwashing machine controls
- Heavy gauge stainless steel frame and cabinet
- Machine vent connection, 7" stack with locking damper
- Separate blower-dryer "auto/off" switch
- Thermal overload protection for electric blower-dryer
- 48" hood design

## EBD-48

Blower-dryer  
For Rack and Flight Conveyor  
Dishwashing Machines



Rack machine  
with EBD-48 shown



## SPECIFIER STATEMENT

Specified unit will be Champion model EBD-48 blower-dryer for rack and flight conveyor dishwashing machines. Features include automatic heat cut-off, 2 Hp blower motor, vent cowl on exit end, separate auto/off switch for blower / dryer.

1 year parts and labor warranty.

This EBD-48 catalog sheet is designed to be used in conjunction with the Champion Rack and Flight Conveyor Series catalog sheets.

## SPECIFICATIONS

<b>Motor horsepower</b>	2
<b>Heating</b>	
Electric, (kW)	12
Steam (lbs/hr. required at 15 psi flow pressure)	65

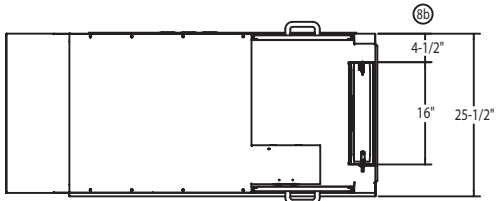
Champion Industries, Inc.  
2674 N. Service Road,  
Jordan Station, Ontario, Canada L0R 1S0  
Tel: 905/562-4195 Fax: 905/562-4618

Champion Industries, Inc.  
3765 Champion Blvd., Winston-Salem, NC 27105  
Tel: 336/661-1556 Fax: 336/661-1979  
[www.championindustries.com](http://www.championindustries.com)

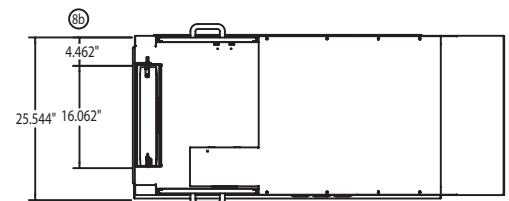


## EBD-48 Blower Dryer For Rack Machine Electric

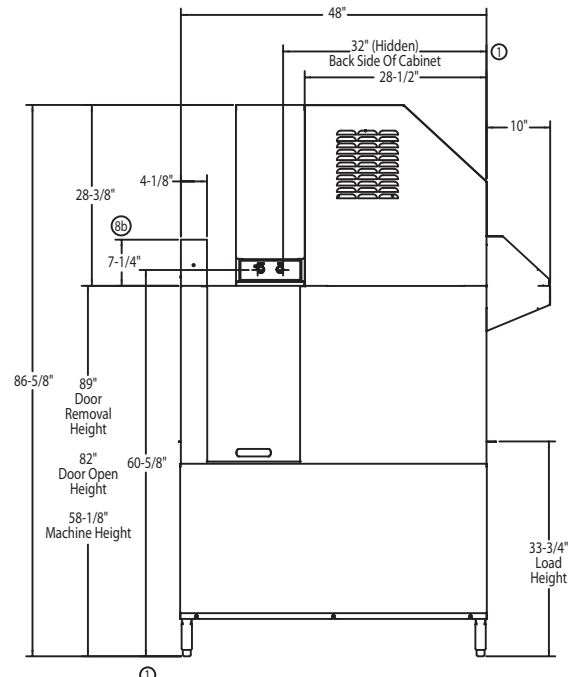
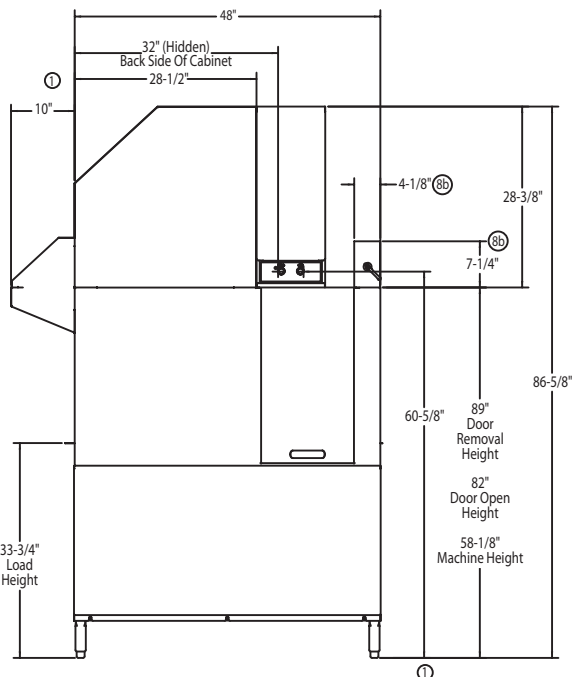
Right-to-Left



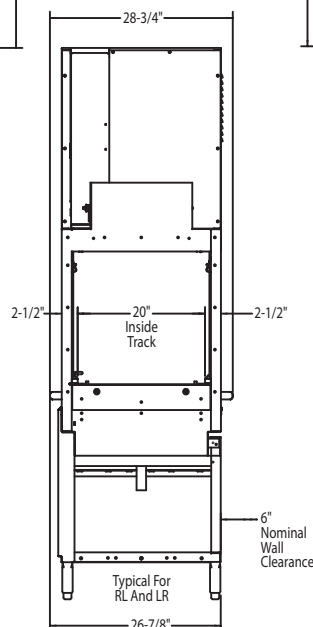
Left-to-Right



Plan View



Front View



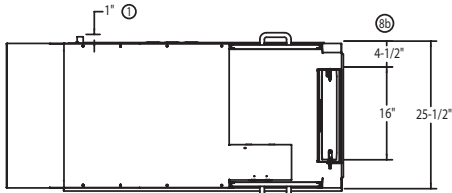
**EUCC, EUCCW**

**Utilities**

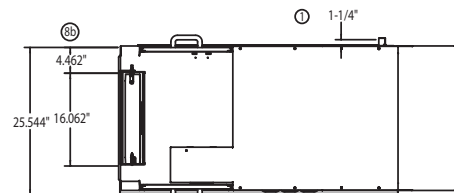
- |          |                               |
|----------|-------------------------------|
| <b>1</b> | <b>Electrical</b> – See chart |
| <b>8</b> | <b>Vent</b>                   |
| <b>b</b> | Unload end: 400 CFM 1/4" S.P. |

## EBD-48 Blower Dryer For Rack Machine Steam

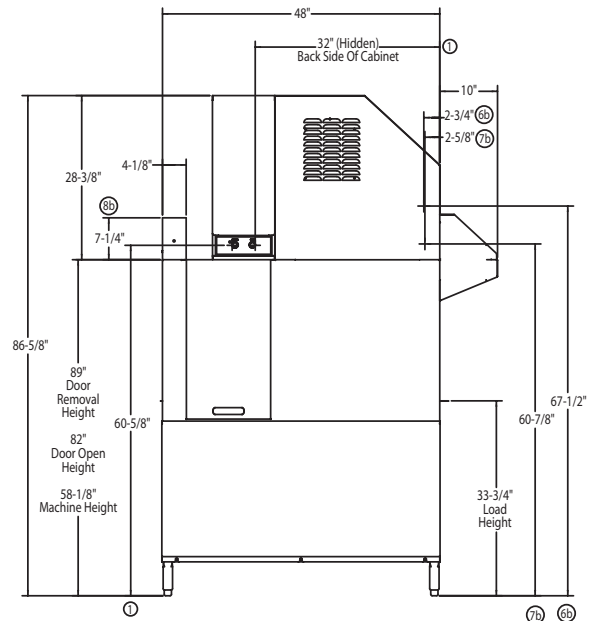
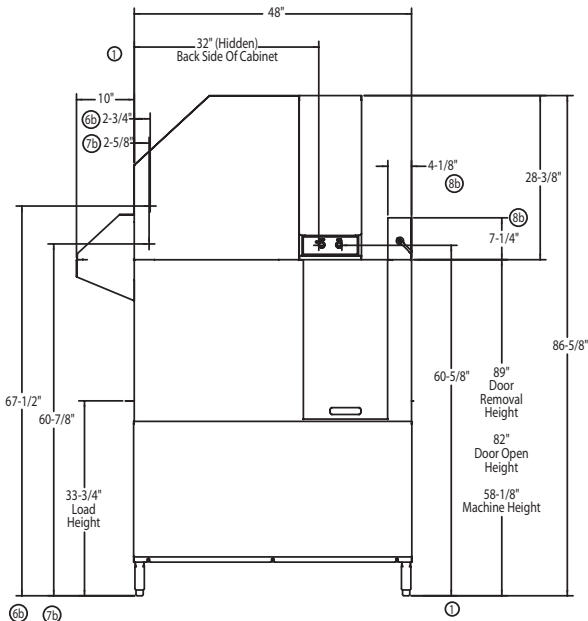
Right-to-Left



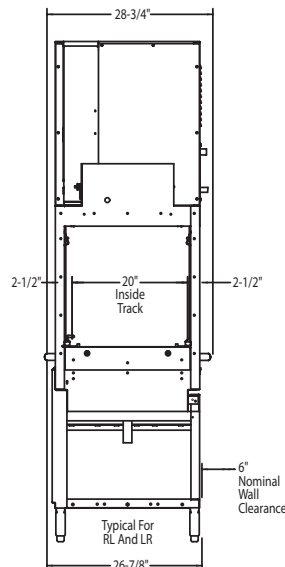
Left-to-Right



Plan View



Front View



**EUCC, EUCCW**

**Utilities**

<b>1</b>	<b>Electrical</b> – See chart
<b>6</b>	<b>Steam</b> 3/4" Steam inlet 65 lbs./hr. at 15-30 PSI
<b>7</b>	<b>Condensate</b> 1/2" Return to boiler
<b>8</b>	<b>Vent</b> b Unload end: 400 CFM 1/4" S.P.

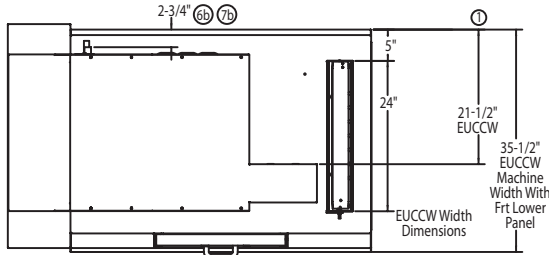
# EBD-48 SERIES

Blower-dryer  
For Rack and Flight Conveyor  
Dishwashing Machines

**Champion**<sup>®</sup>  
The Dishwashing Machine Specialists

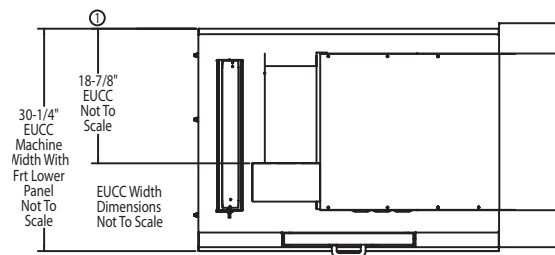
## EBD-48 Blower Dryer For Flight Machine

### Electric Left-to-Right

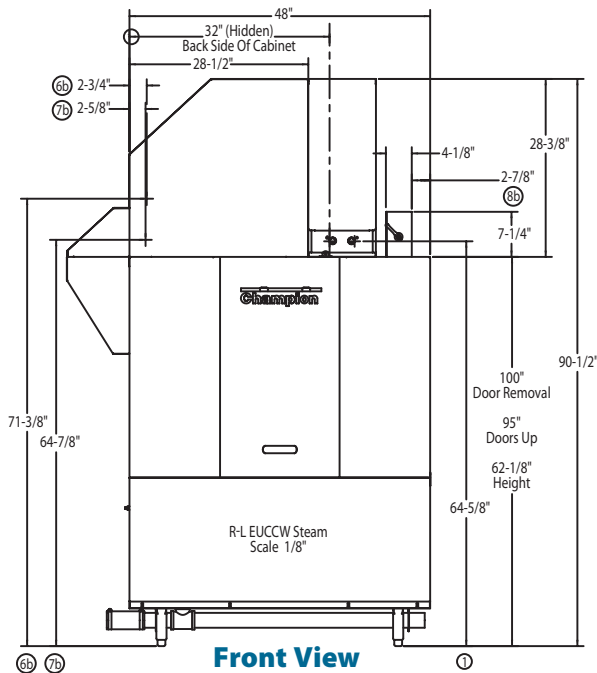


**Plan View**

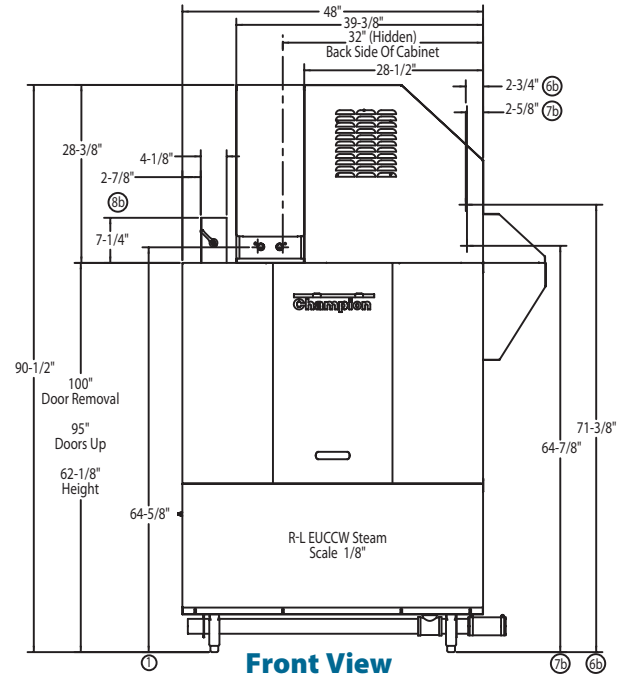
### Steam Right-to-Left



**Plan View**



**Front View**



**Front View**

Utilities	
<b>1</b>	<b>Electrical</b> – See chart
<b>6</b>	<b>Steam</b> 3/4" Steam inlet connection 65 lbs./hr. at 15-30 PSI.
<b>7</b>	<b>Condensate</b> 1/2" Return to boiler (no back pressure)
<b>8</b>	<b>Vent</b> <b>b</b> Unload: 800 CFM 1/4" S.P.

**Warning:** Plumbing and electrical connection should be made by qualified personnel who will observe all the applicable plumbing, sanitary and safety codes and the National Electrical Code.

**Notes:** For blower-dryer installations, increase dishroom ventilation by 600 cfm. Because of the variation in house-supplied steam pressure, a steam pressure regulating valve (PRV) for incoming steam supply is needed. The steam PRV can be purchased from Champion or obtained locally.

Due to an ongoing value analysis program at Champion, specifications contained in this catalog are subject to change without notice.

Champion Industries, Inc., 3765 Champion Blvd., Winston-Salem, NC 27105 • 336/661-1556 • Fax: 336/661-1979 • www.championindustries.com  
2674 N. Service Road, Jordan Station, Ontario, Canada L0R 1S0 • 905/562-4195 • Fax: 905/562-4618