

**Notes:**

The total span of the bridge measured from the face of the concrete abutments is 19.73 m.

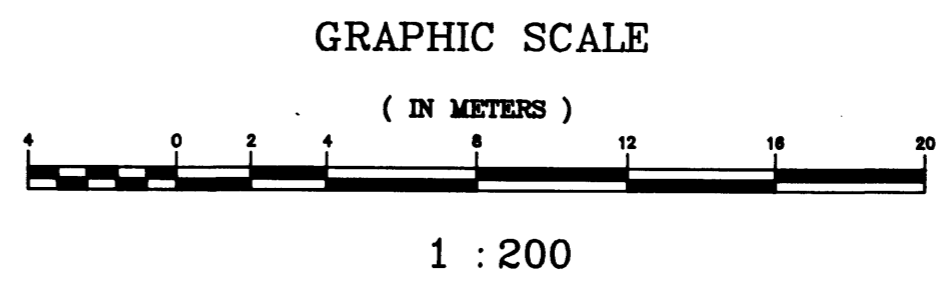
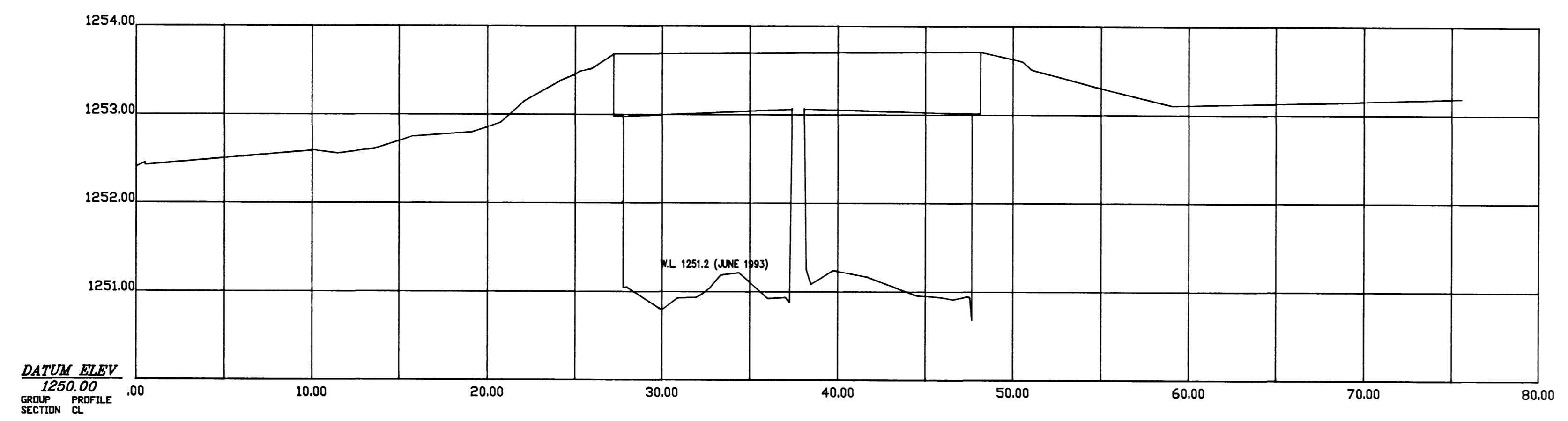
The north span from the face of the concrete abutment to the centreline of the centre pier is 9.92 m. The south span is 9.81 m.

The overall width of the bridge deck is 5.00 m.

The existing bridge, pier and abutments shall be demolished and removed from site.

Treated log stringers shall be removed to local landfill site and buried, not burned.

All trees except as indicated shall be protected from damage from construction activities.



approved by / approuvé par \_\_\_\_\_ date / date 20.08.93  
 Park Superintendent / Directeur du parc

no.	date	description	drawn by / tracé par	app'd by / appr. par
revision / révision				

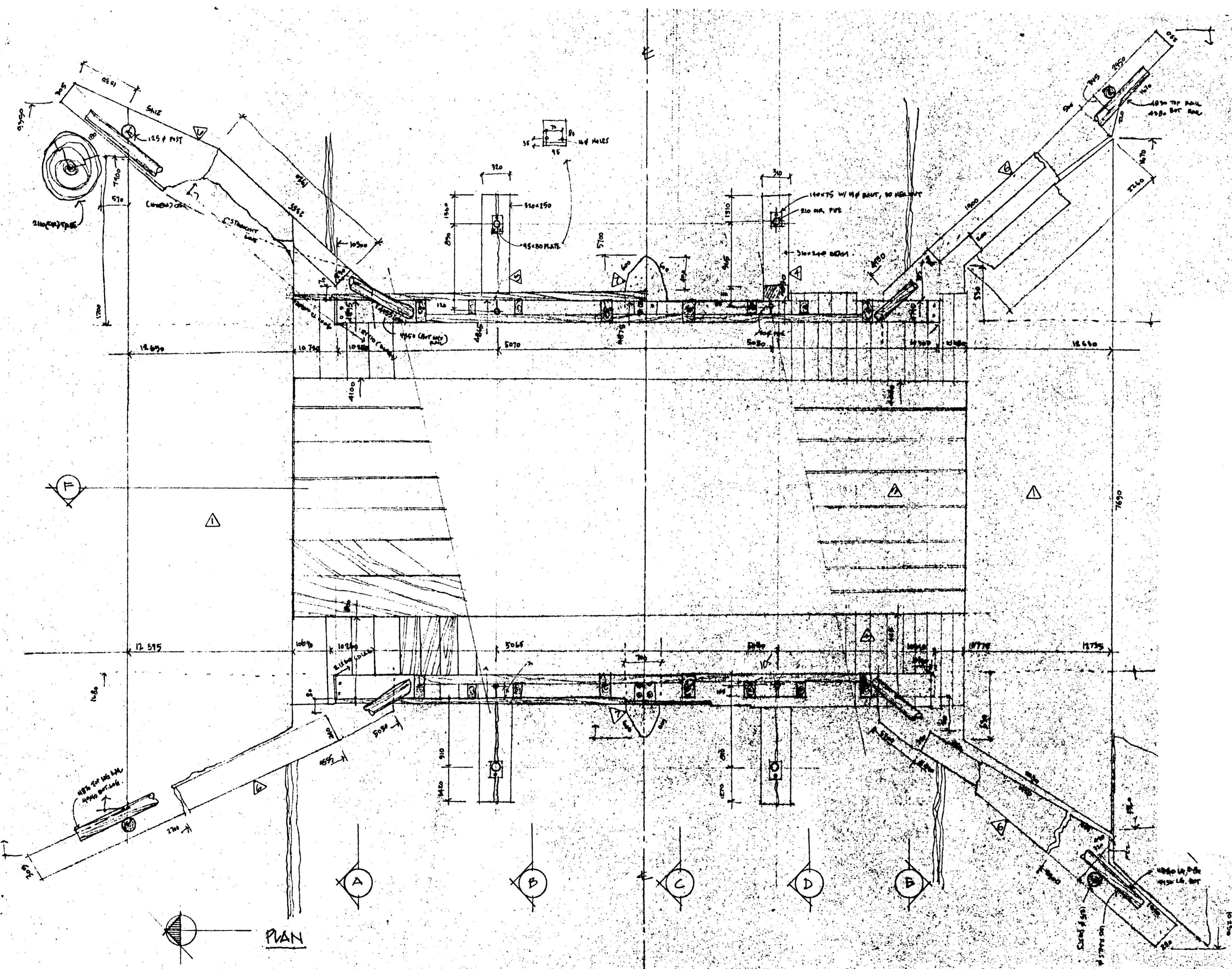
A	A detail number	A numéro de détail
B	B location drawing number	B sur feuille no.
C	C drawing number	C numéro de feuille

**Environment Canada** / **Environnement Canada**  
**Parks Service** / **Service des parcs**  
**Architecture and Engineering** / **Architecture et génie**

project title / titre du projet  
**SERVICE BRIDGE**  
 Bar U Ranch  
 National Historic Site

drawing title / titre du dessin  
**SITE PLAN AND PROFILE**

designed by / conception par	approved by / approuvé par
drawn by / tracé par B. THALE / T. SITTER	date / date AUGUST, 1993
checked by / vérifié par K. DECONTIE	scale / échelle HOR. 1:200 VER. 1:40
project asset number / numéro du projet d'immobilisation PROJECT NO. 88545	sheet no. / feuille no. <b>1 of 7</b>
reference / drawing number / numéro de référence / dessin <b>HWBU93R8</b>	



**NOTES:**

1. CONC. APRON
2. 80 X 305 PLANKS (NO GAPS) X 5065 LG
3. 75 X 900 PLANK SUBFLOOR (S.E. 1504) X 9900 LG
4. 310 X 240 HIGH TIE BEAM (SOUTH)
5. 320 X 250 HIGH TIE BEAM (NORTH)
6. CONC. FOUNDATION WALL. VERT. REIN. BARS @ 400 MM CENTRAL. EXTENDS 150 MM ABOVE 600 MM CONC. COVER.
7. CONC. PEDESTAL FOUNDATION THICKENED EXPOSED
8. 2 - 16 # STEEL BOLTS - EXTEND 175 MM PAST SLEEVE IN A 250 SLEEVE BOLTS
9. BLOCKING
10. 255 MM HIGH STEEL BEAM 115 MM FLANGE WIDTH
11. LOG - ROTTED CONDITION
12. CRACKED & SPLIT BEAM.
13. LINE OF CONC. FOUNDATION BELOW.
14. LOG SUPPORTING FLOOR DECKING SEE AS PER REFERENCED CEILING PLAN
15. 2-55 X 100 BLOCKING BELOW LOG END
16. 4 - 50 X 910 BLOCKING BELOW LOG END
17. BOLT HEAD (95 Ø)
18. 130 X 130 X 12 STEEL PLATE, 50MM HEX NUT, 30P BOLT
19. 50 X 200 X 6 STEEL PLATE, 22 HEX NUT, 12P BOLT
20. SAME AS # 19
21. SAME AS # 18 JUNK INTO BEAM
22. 100 X 100 X 9 STEEL PLATE, 30 Ø HEAD BOLT
23. 30 Ø HEAD BOLT
24. 230 X 130 X 12 STEEL PLATE, 50 HEX, 30P BOLT
25. 100 X 100 X 9 STEEL PLATE, 30P HEX NUT, 12P BOLT, 40 DEEP WASHER
26. 90 X 150 X 9 STEEL PLATE, 25P HEX NUT, 12P BOLT
27. 255 X 255 X 12 STEEL PLATE, 50 HEX NUT, 30P BOLT
28. 35 X 85 X 9 STEEL PLATE, 35 Ø BOLT - PLATE W/ 9 HOLES, 2mm # 5
29. 150 X 150 X 105 HIGH WOOD POST. (GREEN FIT)
30. 4 - 50 X 150 PLANK BLOCKING BELOW BEAM END. (4 MORE BEHIND RM CRT)
31. PLANK END WALL
32. 50 X 150 BLOCKING ON TOP OF LOG
33. 210 MM CIRCUM. STEEL PIPE DOWN TO 140 X 75 ST. PLATE W/ 19MM # BOLT, 80MM HEX. NUT
34. 50MM Ø PIPE
35. 95 X 80 STEEL PLATE WITH UP TURN ON ONE END. 2 - 16MM # HOLES.
36. 100 Ø LOG POST
37. 185 Ø LOG POST - 1400MM HIGH
38. 100MM Ø LOG RAIL
39. 195 X 150 MAIN SUPPORT
40. 155 X 100 SECONDARY SUPPORT
41. 145 X 50 UPPER & MIDDLE RAIL
42. 195 X 50 LOWER RAIL
43. BLOCKING AT BASE OF SECONDARY SUPPORTS
44. 2 - 55 X 900
45. 185 X 200 X 150 B.L.K.

approved by / approuvé par \_\_\_\_\_ date / date \_\_\_\_\_  
 20 03 93  
 Park Superintendent / Directeur du parc

no.	date	description	drawn by / tracé par	app'd by / approuvé par
revision / révision				

A	A detail number	A numéro de détail
B	B location drawing number	B sur feuille no.
C	C drawing number	C numéro de feuille

**Environment Canada** / **Environnement Canada**  
**Parks Service** / **Service des parcs**  
**Architecture and Engineering** / **Architecture et génie**

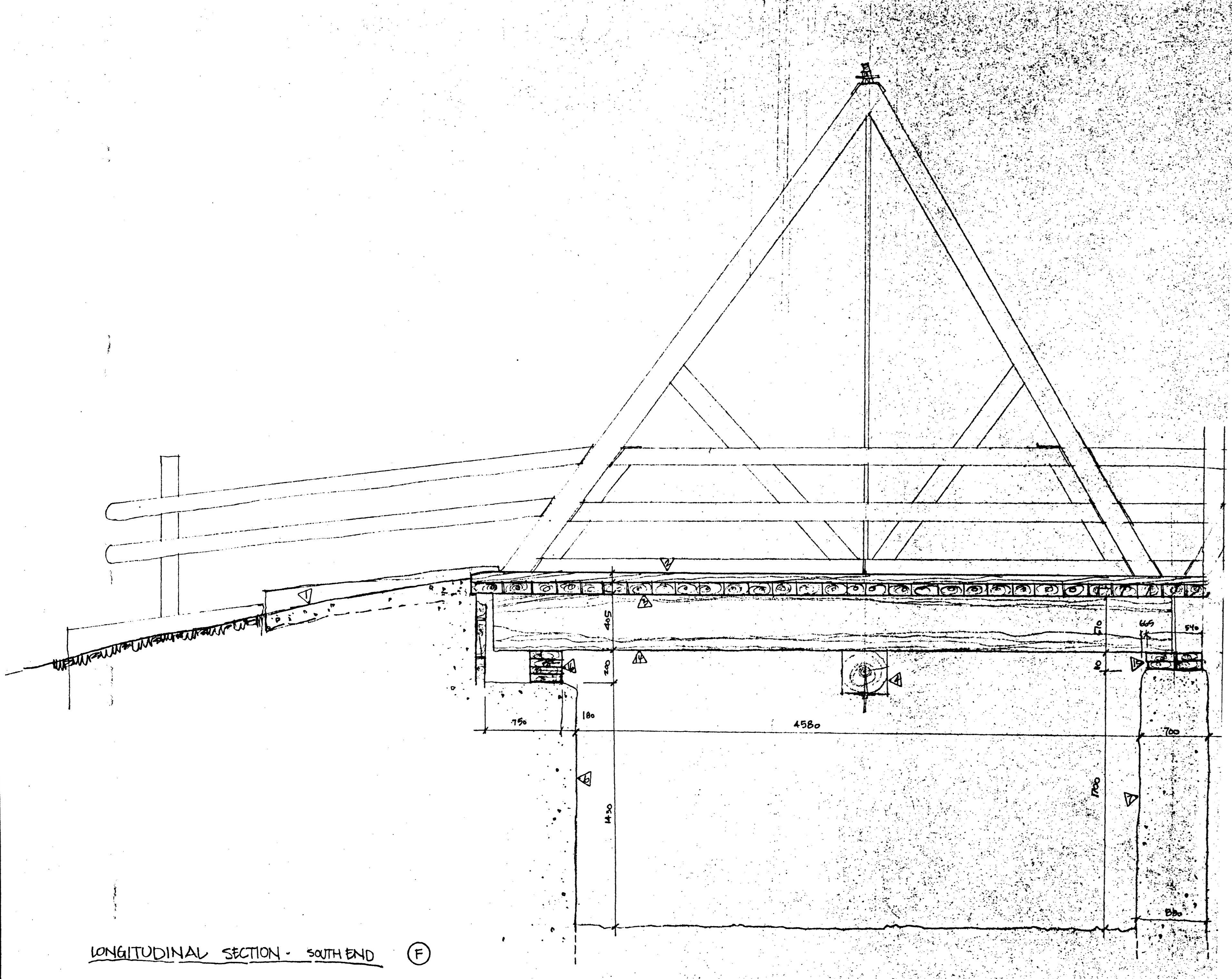
project title / titre du projet  
**SERVICE BRIDGE**  
 Bar U Ranch  
 National Historic Site

drawing title / titre du dessin  
**EXISTING BRIDGE**

designed by / conception par	approved by / approuvé par
drawn by / tracé par K.D. DRAFTING LTD / T. SITTER	date / date AUGUST, 1993
checked by / vérifié par K. DECONTIE	scale / échelle N.T.S.

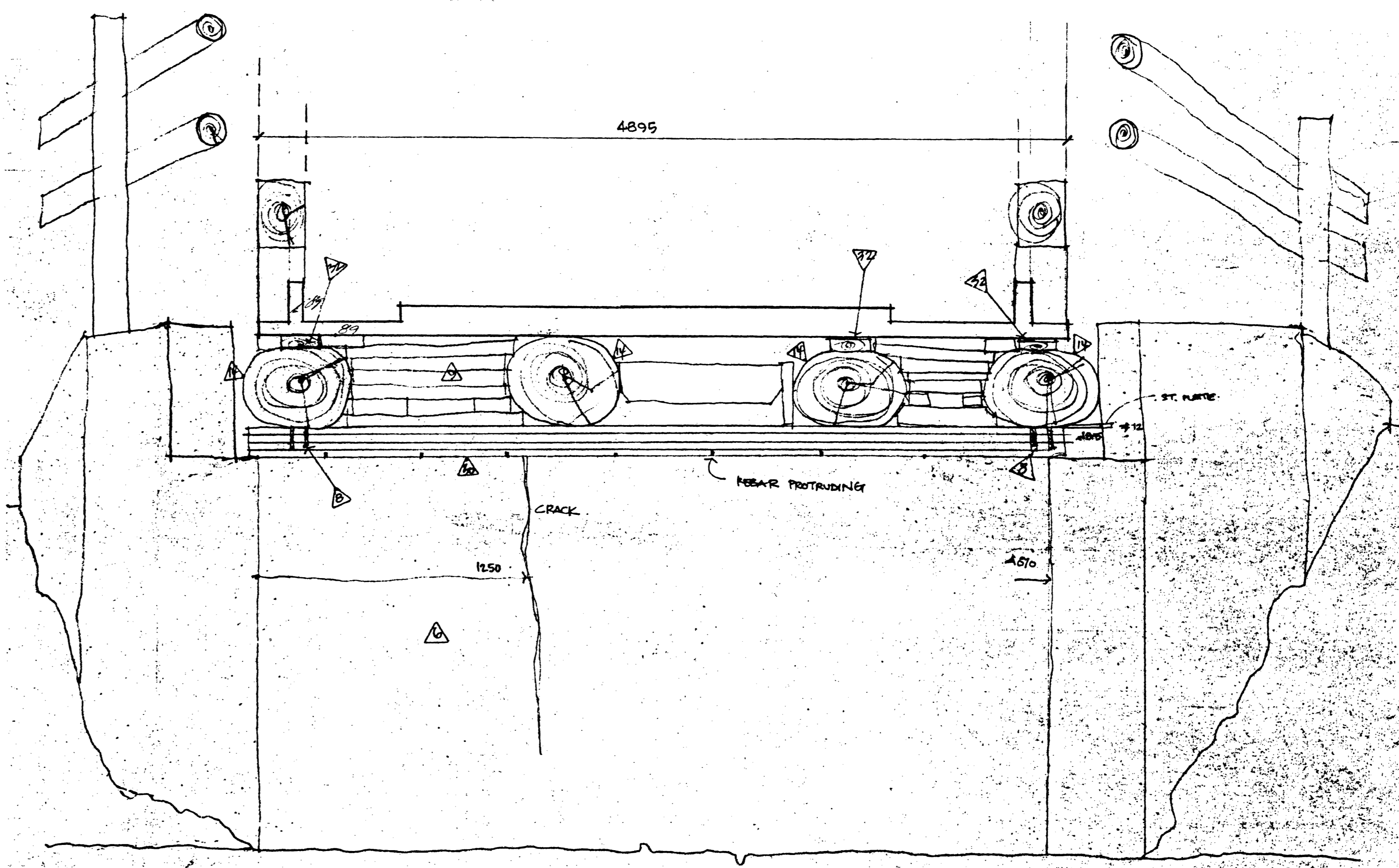
project asset number / numéro du projet d'immobilisation  
 PROJECT NO. 88545  
 reference / drawing number / numéro de référence / dessin  
**HWBU93R8**  
 sheet no. / feuille no.  
**2 of 7**





NOTE: THIS DRAWING IS OF ONLY  
HALF OF THE EXISTING BRIDGE

LONGITUDINAL SECTION - SOUTH END (F)



approved by / approuvé par \_\_\_\_\_ date / date \_\_\_\_\_  
 Park Superintendent / Directeur du parc \_\_\_\_\_ 20.08.93

no.	date	description	drawn by / tracé par	app'd by / appr. par

revision / révision

A	B	C
A detail number	B location drawing number	C drawing number
A numéro de détail	B sur feuille no.	C numéro de feuille

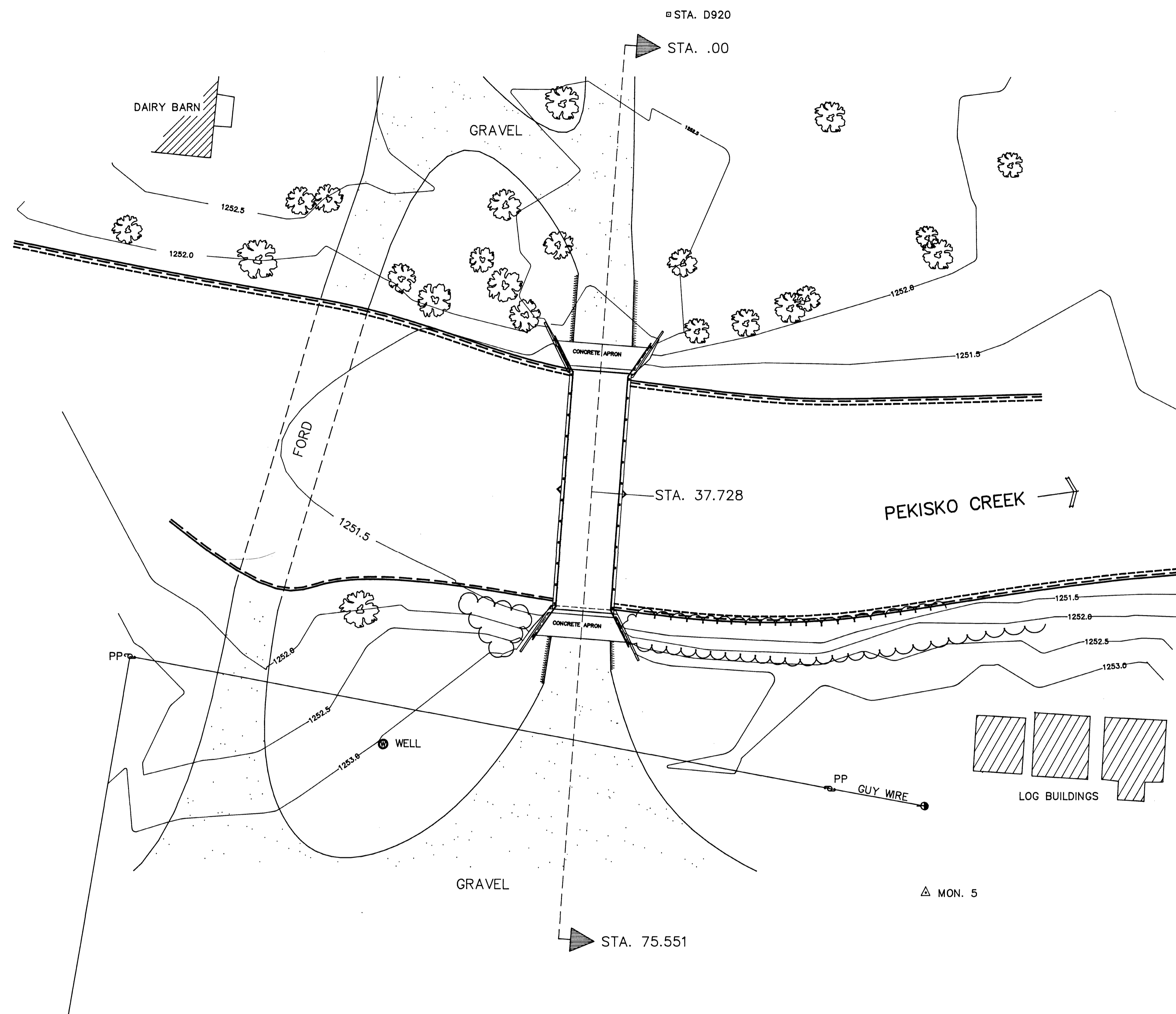
Environment Canada / Environnement Canada  
 Parks Service / Service des parcs  
 Architecture and Engineering / Architecture et génie

project title / titre du projet  
**SERVICE BRIDGE**  
 Bar U Ranch  
 National Historic Site

drawing title / titre du dessin  
**EXISTING BRIDGE**

designed by / conception par	approved by / approuvé par
drawn by / tracé par K.D.DRAFTING LTD / T.SITTER	date / date AUGUST, 1993
checked by / vérifié par K. DECONTIE	scale / échelle N.T.S.

project asset number / numéro du projet d'immobilisation  
 PROJECT NO. 88545  
 drawing number / numéro de référence / dessin  
**HWBU93R8**  
 sheet no. / feuille no.  
**3 of 7**

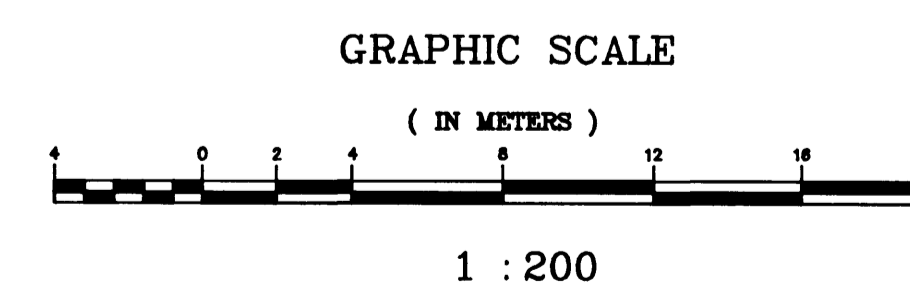
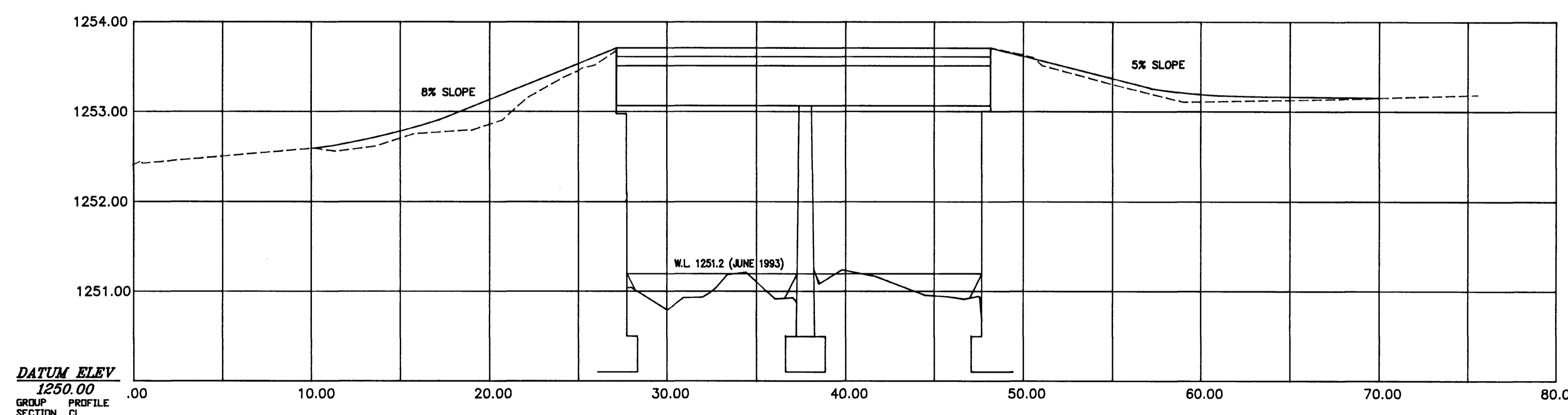


**Notes:**

The total span of the bridge measured from the face of the concrete abutments is 19.74 m.

The north span from the face of the concrete abutment to the centreline of the centre pier is 9.87 m. The south span is 9.87 m.

The overall width of the bridge deck is 5.20 m.



approved by / approuvé par \_\_\_\_\_ date / date \_\_\_\_\_  
 Park Superintendent / Directeur du parc \_\_\_\_\_ 20.03.97

no.	date	description	drawn by / tracé par	app'd by / appr. par

revision / révision		
A	A detail number	A numéro de détail
B	B location drawing number	B sur feuille no.
C	C drawing number	C numéro de feuille

**Environment Canada** / **Environnement Canada**  
**Parks Service** / **Service des parcs**  
**Architecture and Engineering** / **Architecture et génie**

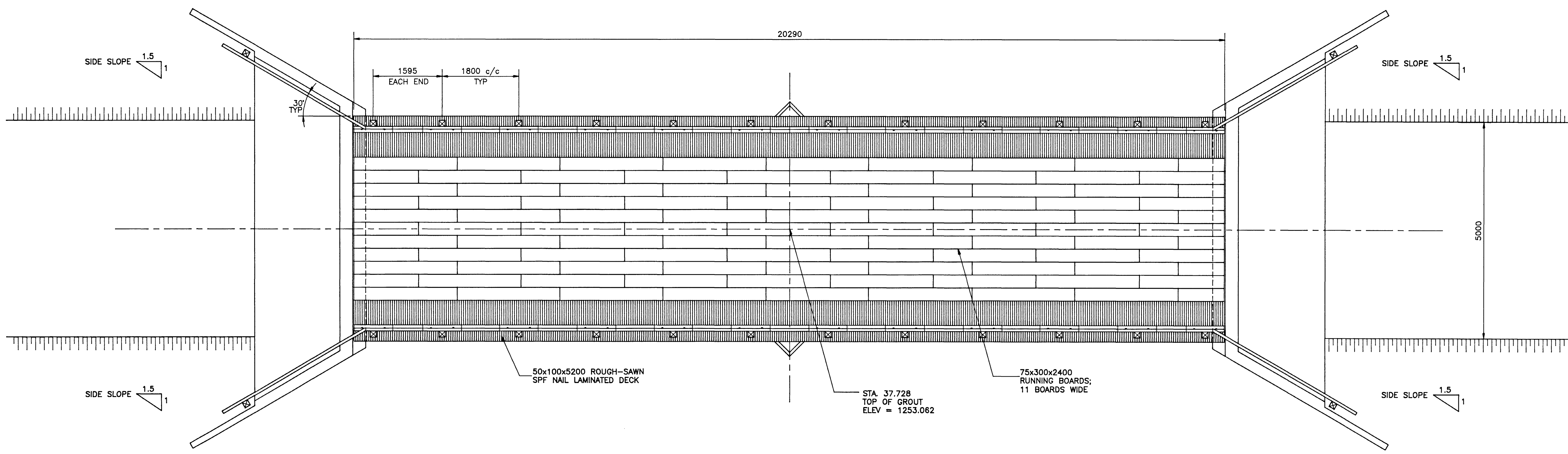
project title / titre du projet  
**SERVICE BRIDGE**  
 Bar U Ranch  
 National Historic Site

drawing title / titre du dessin  
**SITE PLAN AND PROFILE**

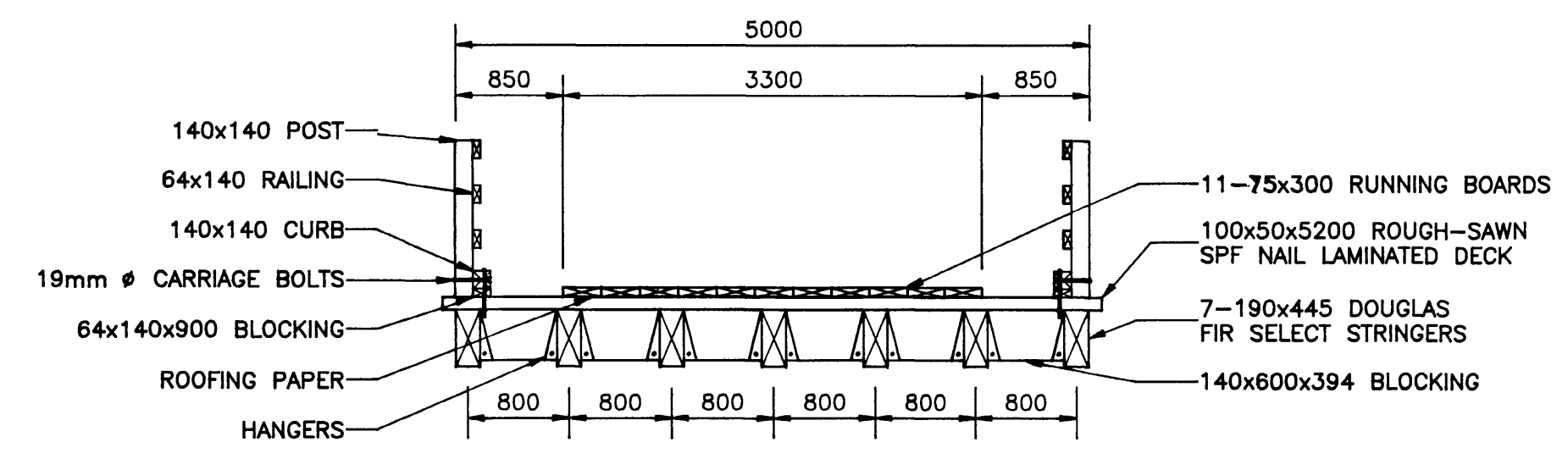
designed by / conception par K. DECONTIE	approved by / approuvé par
drawn by / tracé par B. THRALE / T. SITTER	date / date AUGUST, 1993
checked by / vérifié par K. DECONTIE	scale / échelle HOR. 1:200 VER. 1:40

project asset number / numéro du projet d'immobilisation  
 PROJECT NO. 88545  
 reference / drawing number / numéro de référence / dessin  
**HWBU93R8**  
 sheet no. / feuille no.  
**4 of 7**

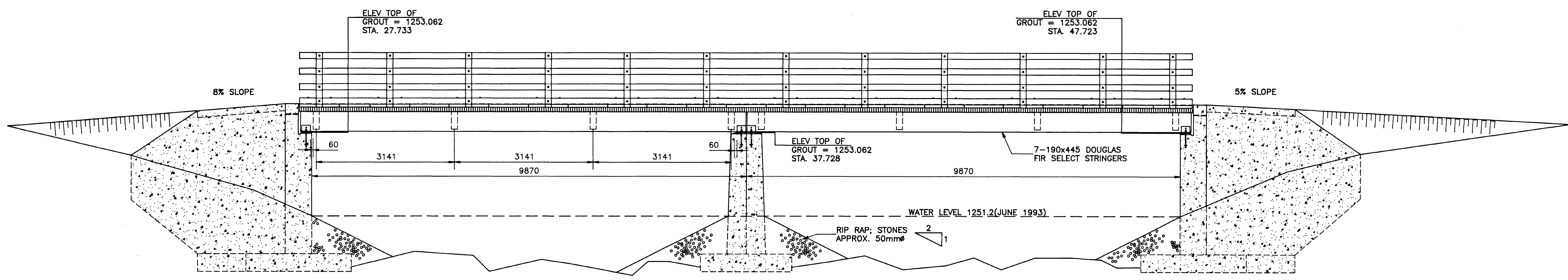




PLAN



CROSS SECTION-2 SPAN BRIDGE



ELEVATION

- NOTES :**
1. CONCRETE COMPRESSIVE STRENGTH TO BE 25 MPa  
● 28 DAYS, 40mm AGGREGATE, 3-6% ENTRAINED AIR.
  2. CEMENT TO BE TYPE 10 NORMAL PORTLAND CEMENT.
  3. CONCRETE WORK TO BE CARRIED OUT TO CSA CAN 3-A23.1(1985)
  4. REINFORCING STEEL TO BE GRADE 400 DEFORMED BARS FOR NO.15 AND LARGER, GRADE 300 FOR NO.10 BARS.
  5. ALL STRUCTURAL STEEL TO BE DESIGNED AND CONSTRUCTED IN ACCORDANCE WITH CAN 3 S 16.1(1991).
  6. BOLT LENGTH TO SUIT WITH NO MORE THAN 3 THREADS EXPOSED.
  7. ALL LUMBER SHALL BE PRESSURE TREATED WITH CCA IN ACCORDANCE WITH CSA 080. ALL LUMBER IN CONTACT WITH GROUND SHALL BE INCISED AND TREATED ● RETENTION RATE OF 6.4 kg/m<sup>3</sup>. ALL DECK TIMBER, NAILING BLOCKS, AND HANDRAIL POSTS SHALL BE SURFACED 4 SIDES AND PRESSURE TREATED ● RETENTION RATE OF 4.0 kg/m<sup>3</sup>.
  8. FILL SPACE BETWEEN BRIDGE AND RETAINING WALL AND PATHWAY WITH FREE-DRAINING BACKFILL MATERIAL, COMPACTED TO 98% SLAB ON GRADE(APPROX.), POURED TO COMPLETE APPROACH SLAB.

approved by / approuvé par \_\_\_\_\_ date / date \_\_\_\_\_  
 Park Superintendent / Directeur du parc

no.	date	description	drawn by / tracé par	app'd by / appr. par

revision / révision

A	B	C
A detail number / A numéro de détail	B location drawing number / B sur feuille no.	C drawing number / C numéro de feuille

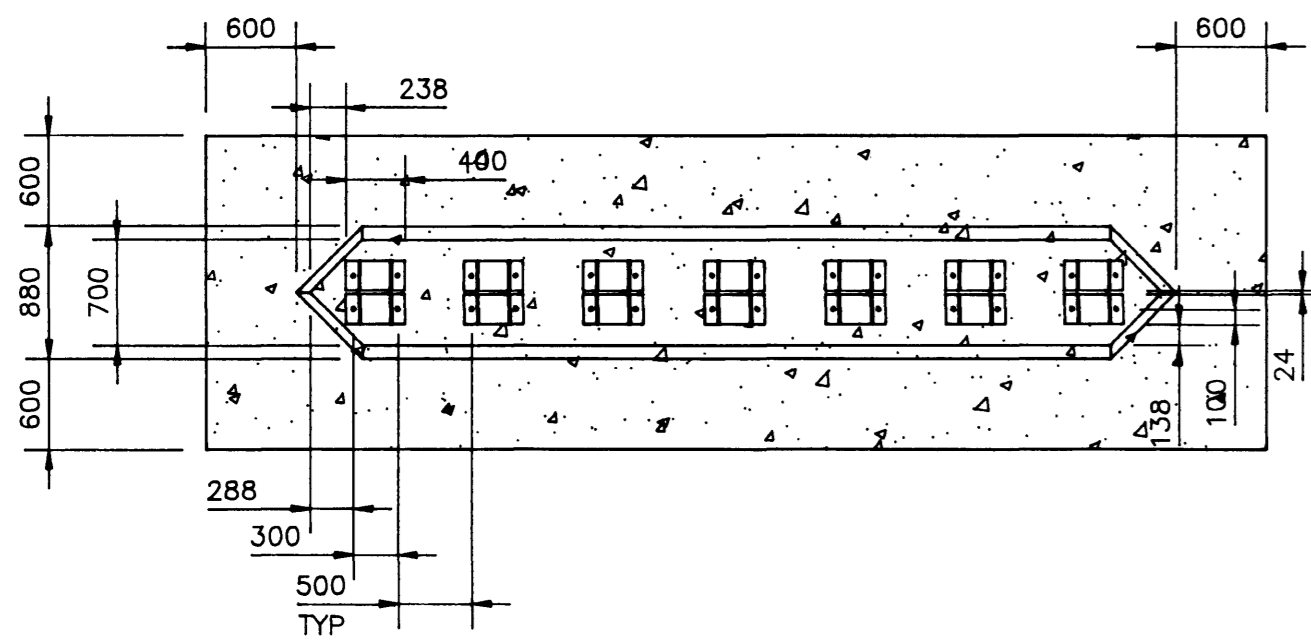
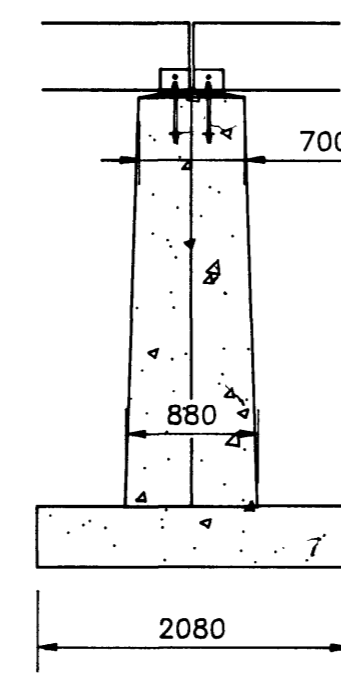
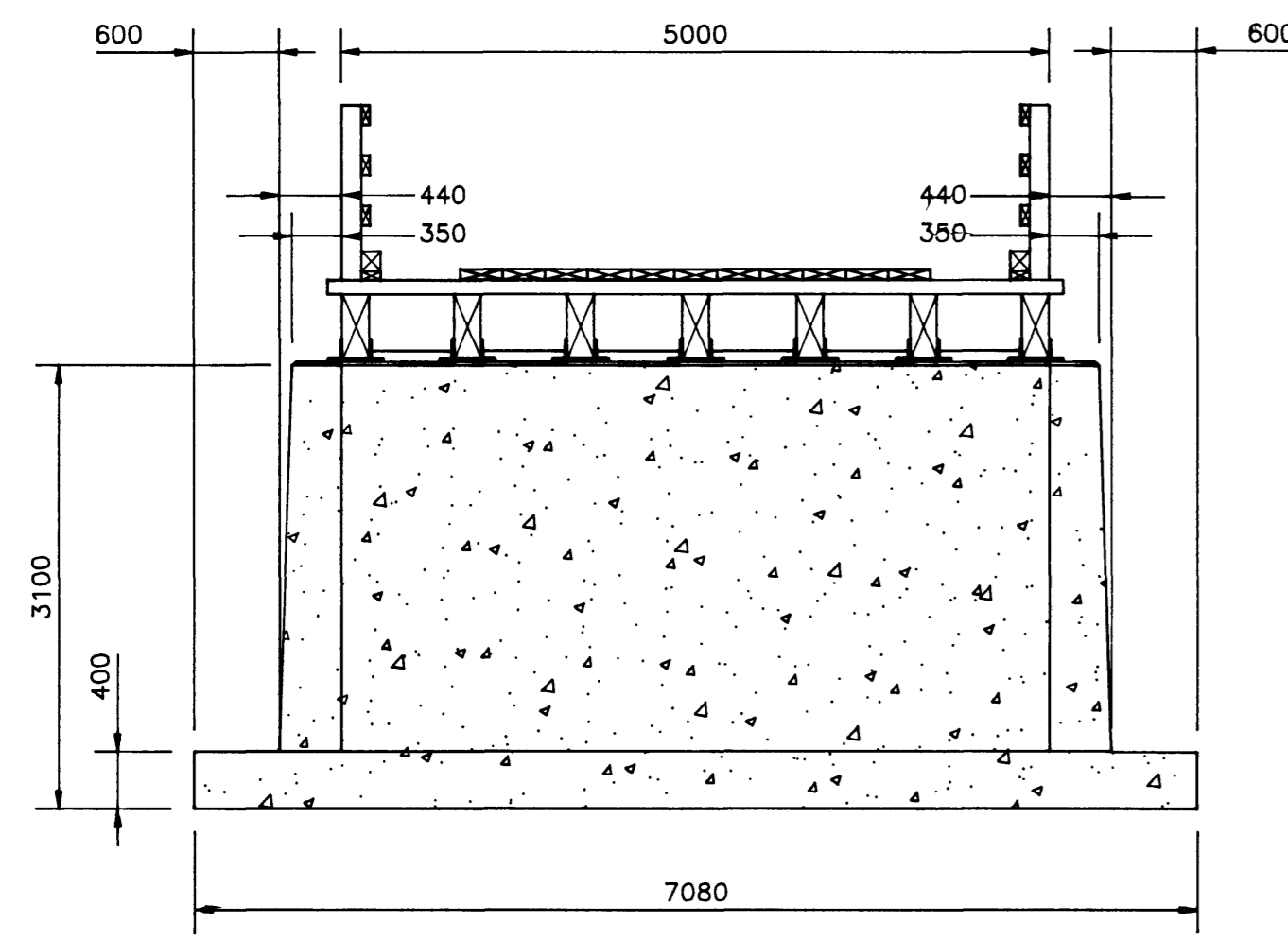
Environment Canada / Environnement Canada  
 Parks Service / Service des parcs  
 Architecture and Engineering / Architecture et génie

project title / titre du projet  
**SERVICE BRIDGE**  
 Bar U Ranch National Historic Site

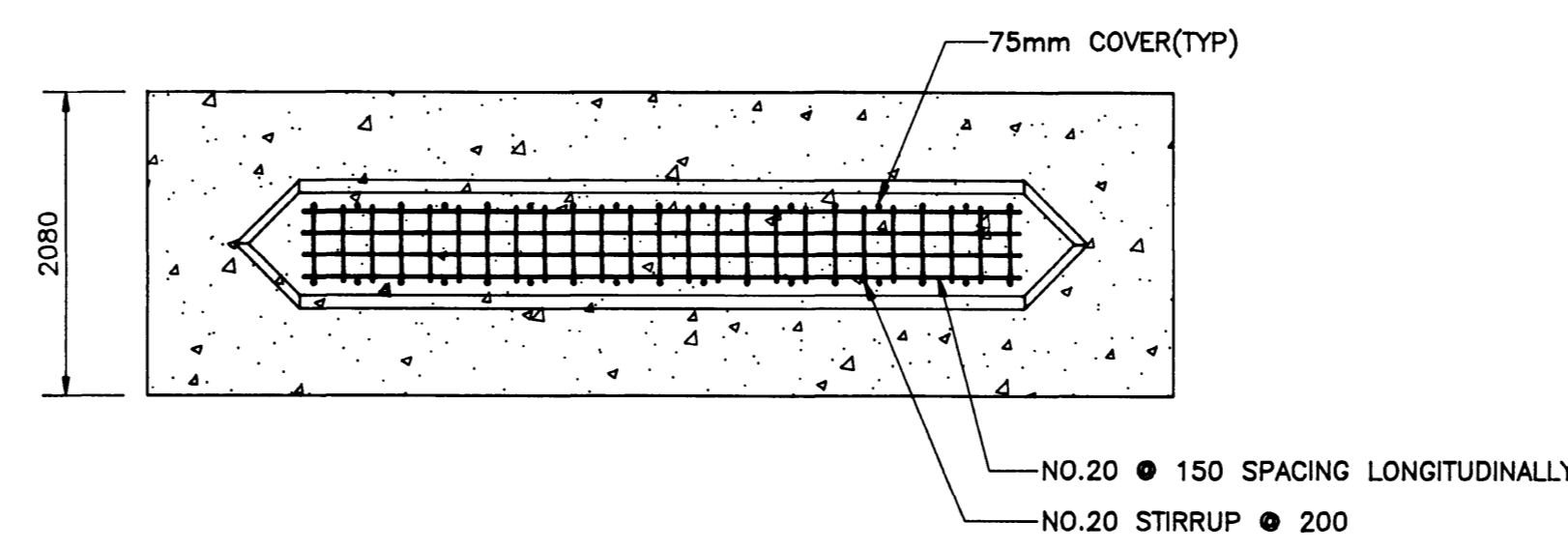
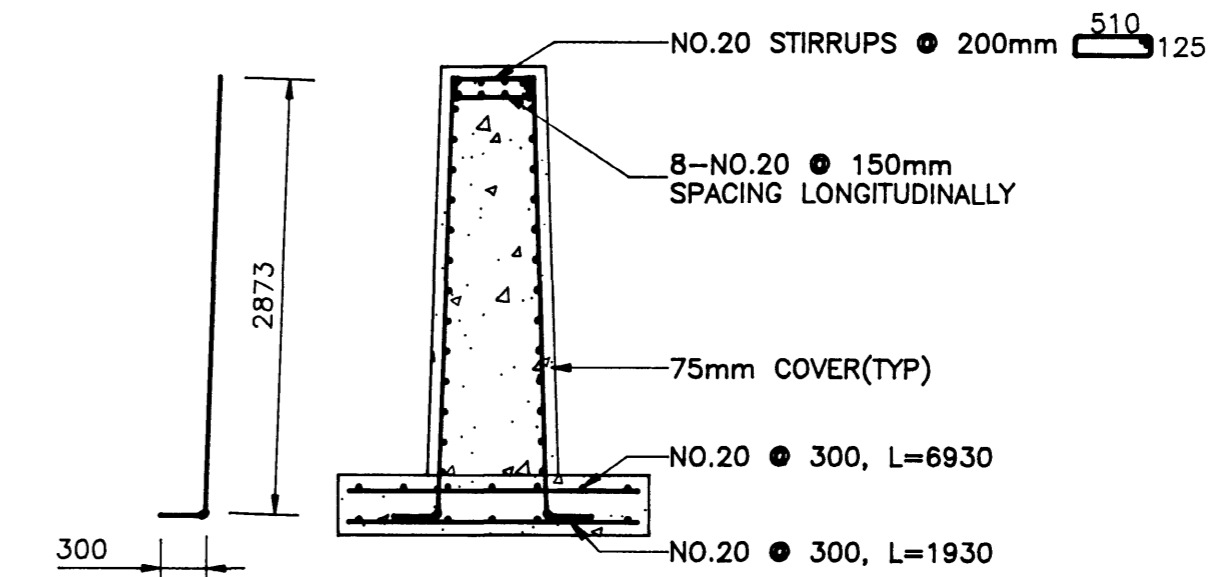
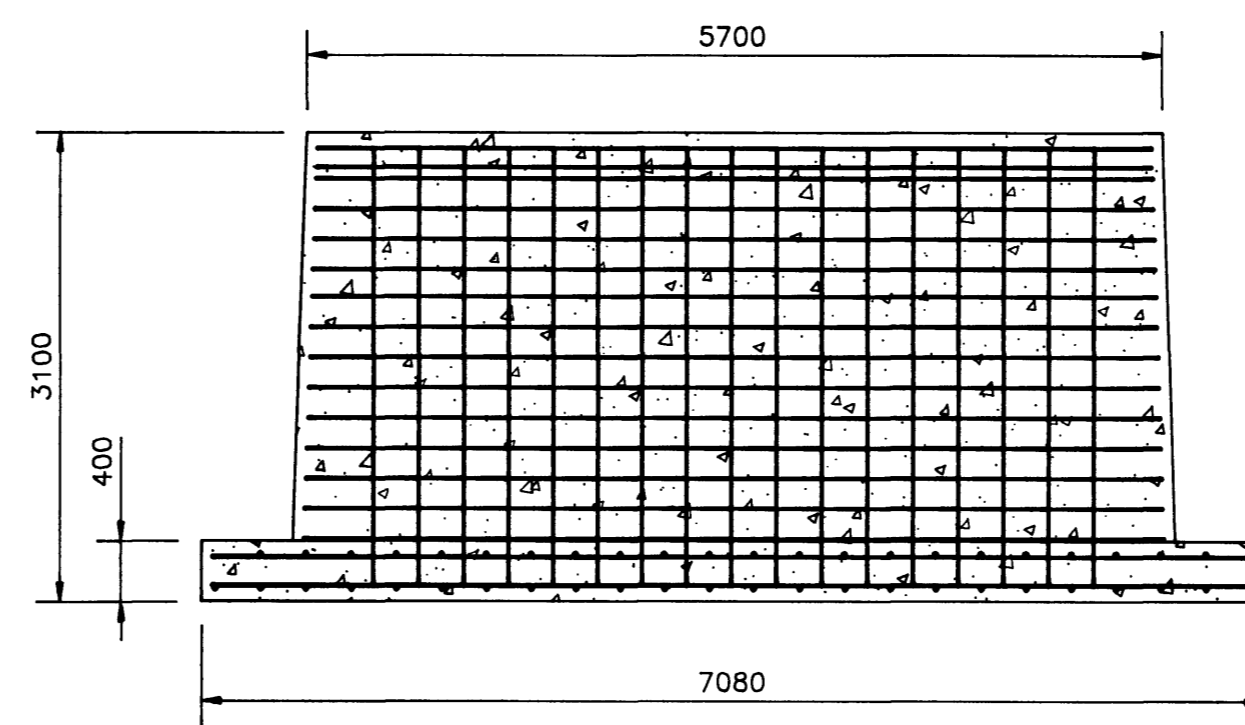
drawing title / titre du dessin  
**PLANS AND ELEVATIONS**

designed by / conception par K. DECONTIE approved by / approuvé par \_\_\_\_\_  
 drawn by / tracé par T. SITTER date / date AUGUST, 1993  
 checked by / vérifié par K. DECONTIE scale / échelle 1 : 50

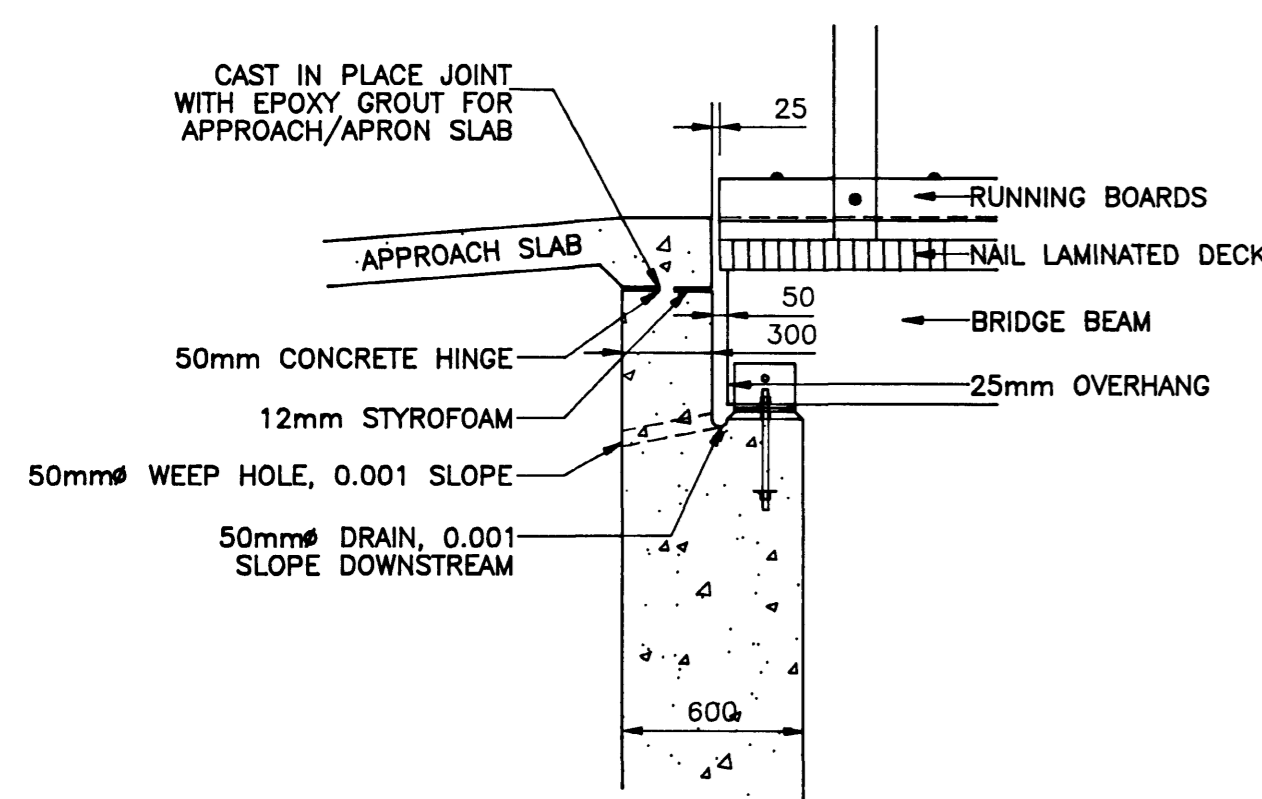
project asset number / numéro du projet d'immobilisation PROJECT NO. 88545 sheet no. / feuille no. **5 of 7**  
 reference / drawing number / numéro de référence / dessin **HWBU93R8**



PIER ELEVATIONS

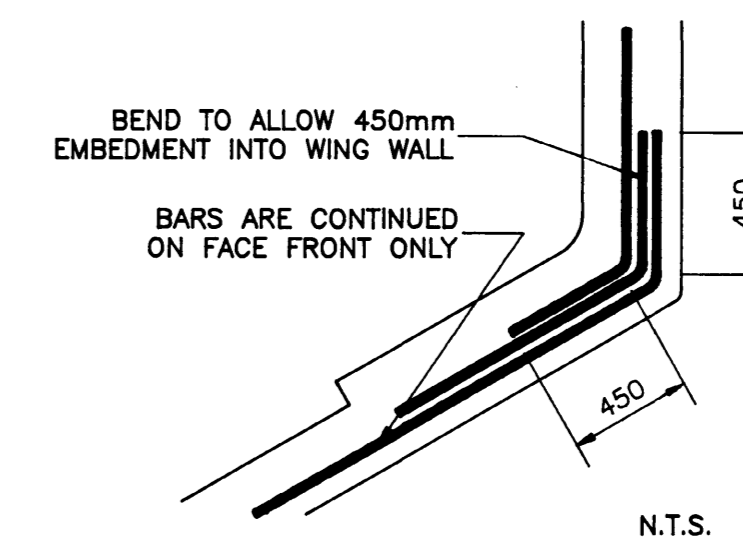
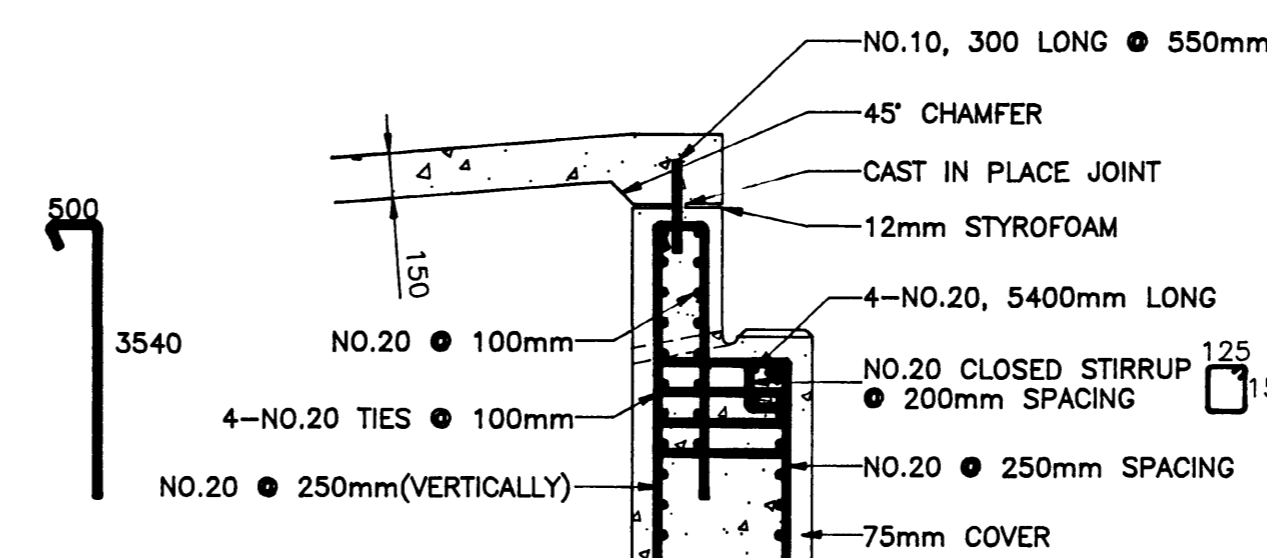
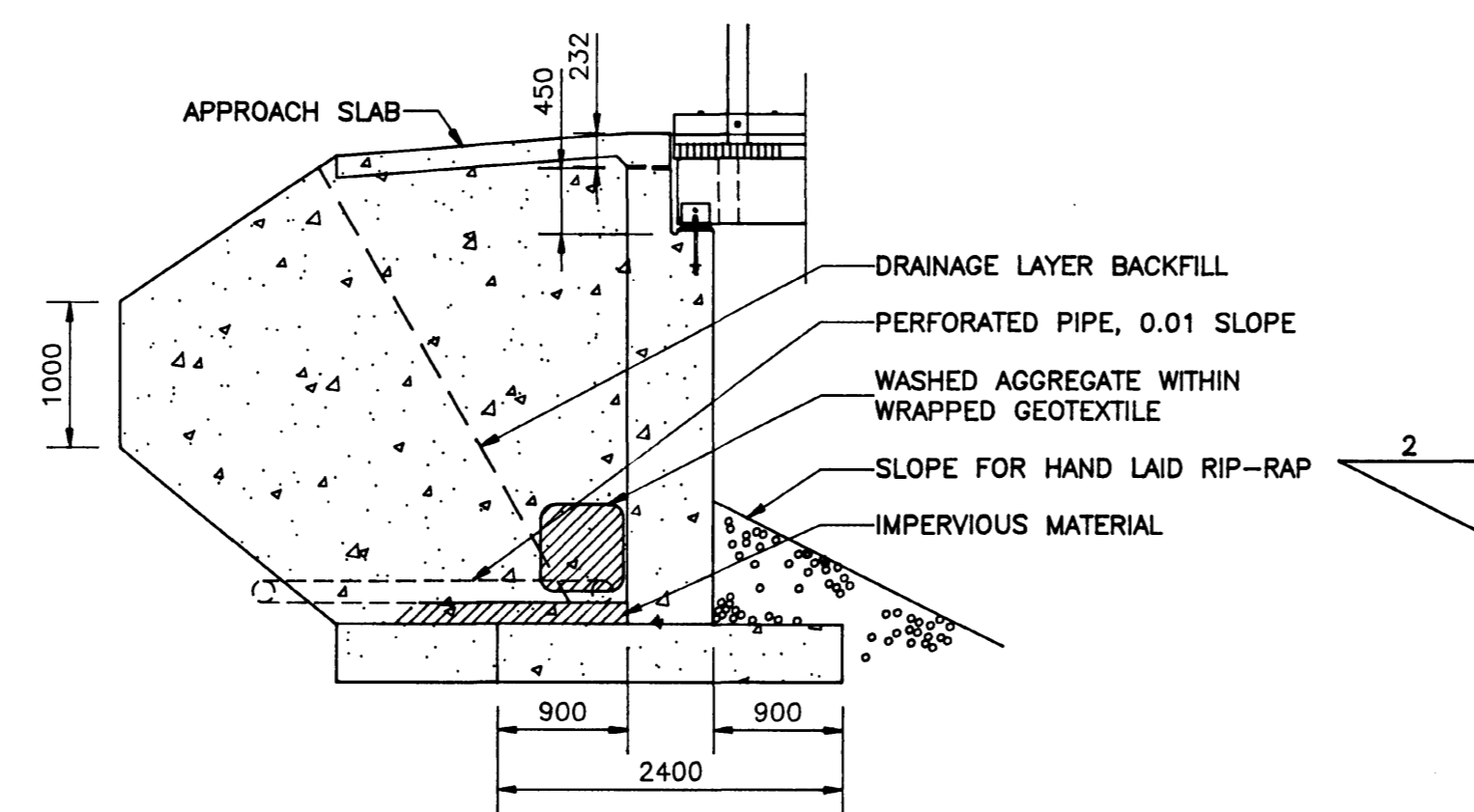


REINFORCING DETAILS-PIER

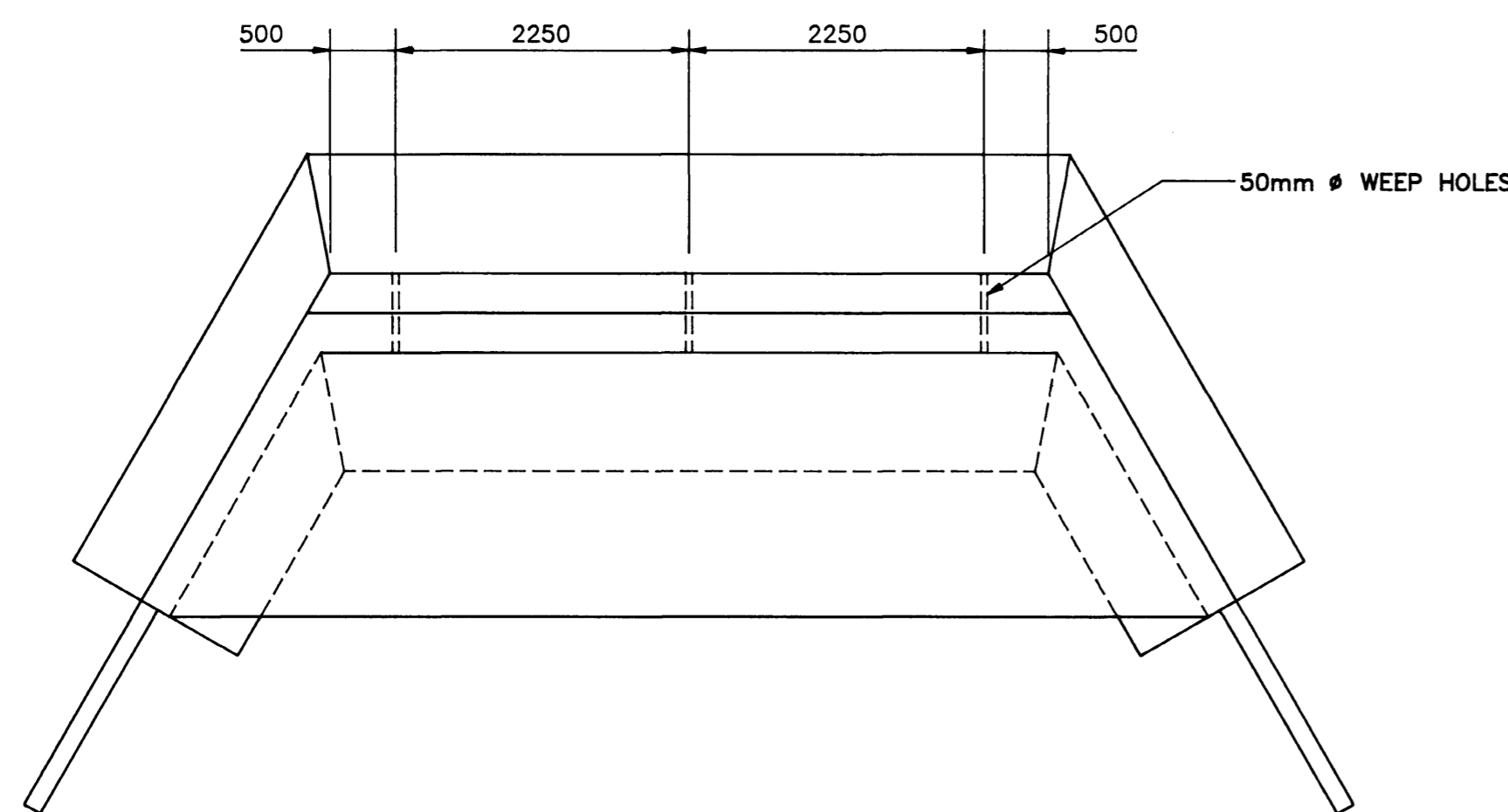
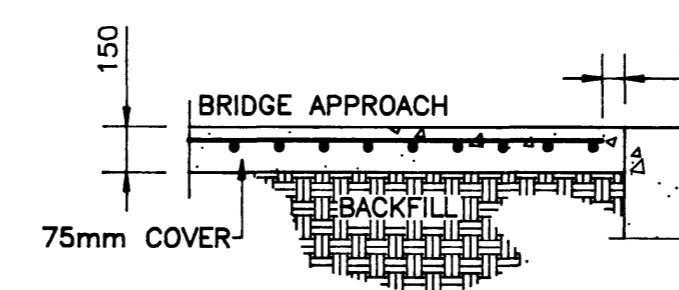
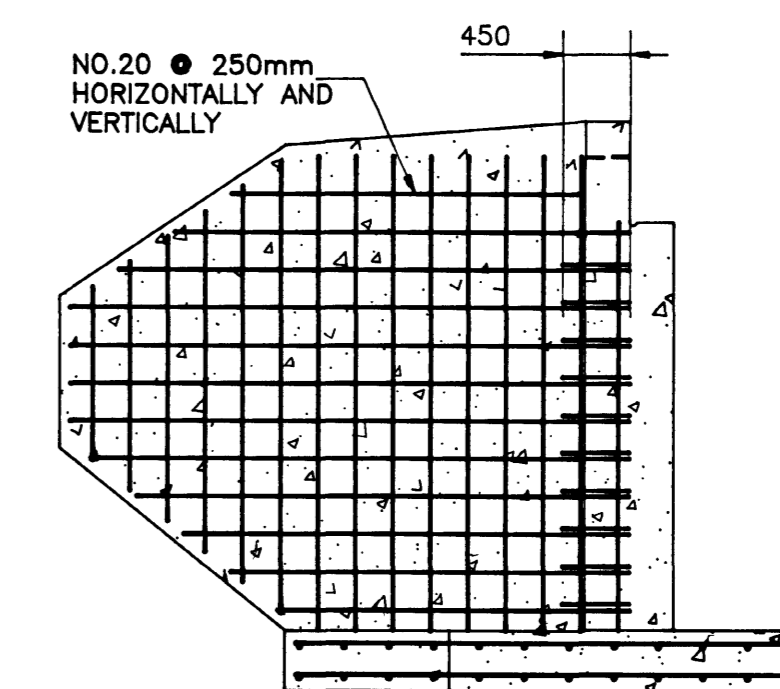
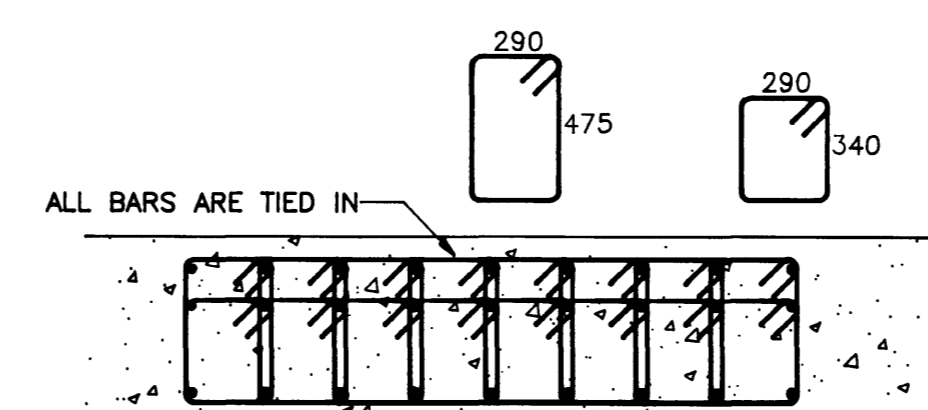


CONNECTION DETAIL

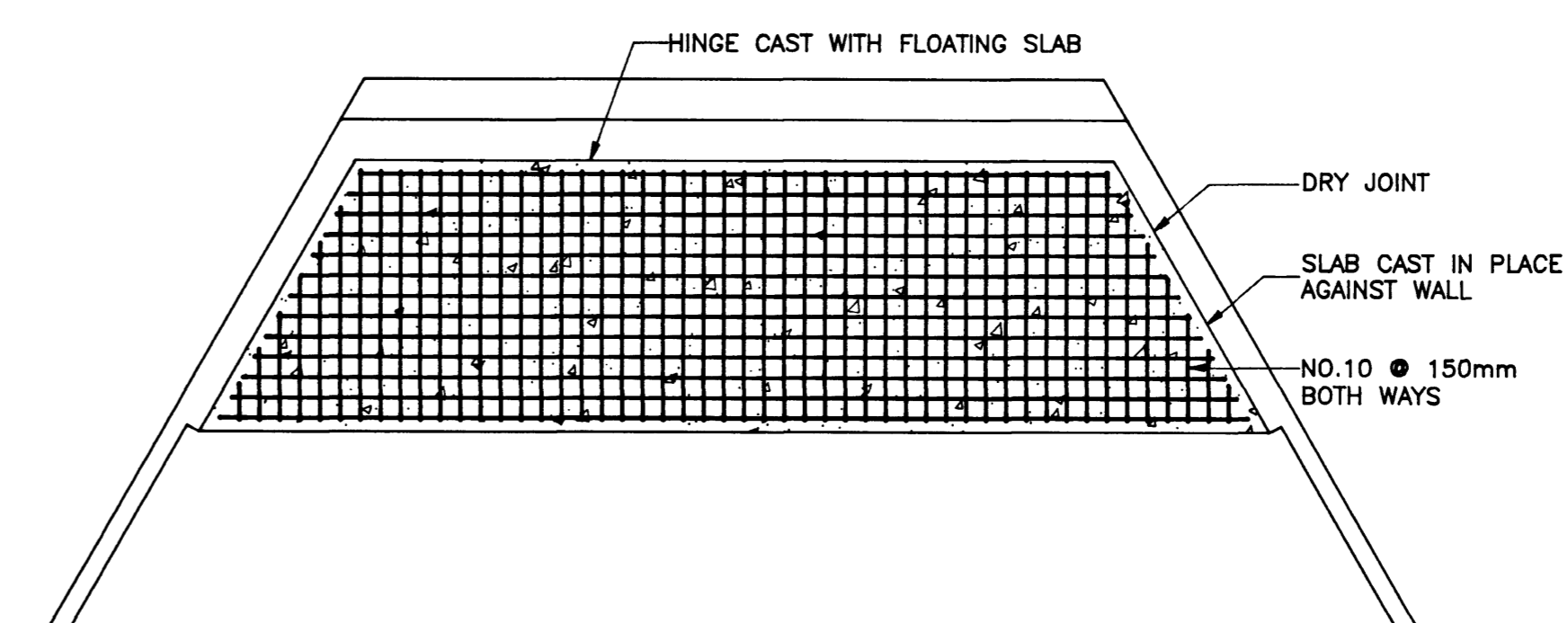
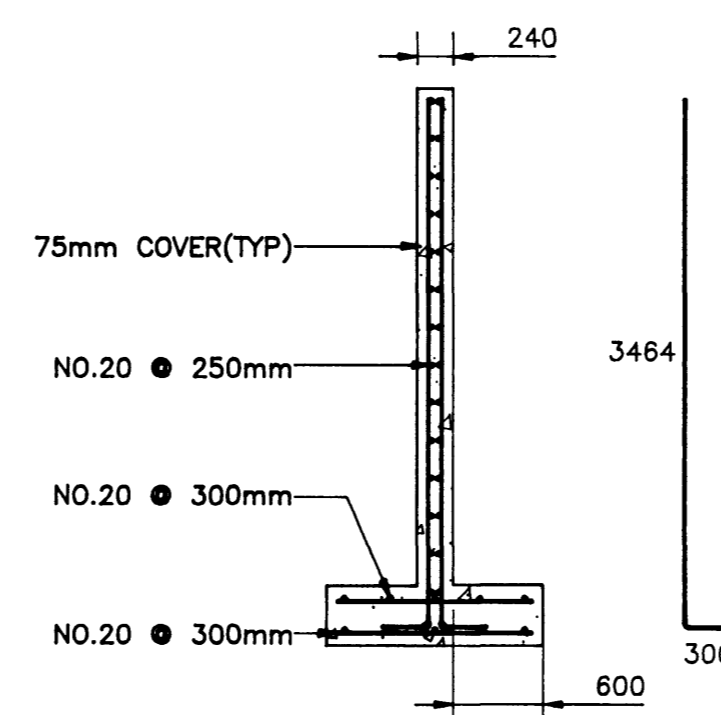
SCALE 1 : 20



N.T.S.



ABUTMENT DETAILS



REBAR DETAIL - CONCRETE APRON

SCALE 1 : 50

approved by / approuvé par \_\_\_\_\_ date / date \_\_\_\_\_

Park Superintendent / Directeur du parc \_\_\_\_\_ 20 08 99

no.	date	description	drawn by / tracé par	app'd by / appr. par

revision / révision

A	B	C
A detail number	B location drawing number	A numéro de détail
	C drawing number	B sur feuille no.
		C numéro de feuille

Environment Canada / Environnement Canada  
Parks Service / Service des parcs  
Architecture and Engineering / Architecture et génie

project title / titre du projet

SERVICE BRIDGE

Bar U Ranch  
National Historic Site

drawing title / titre du dessin

DETAILS, SECTIONS  
AND ELEVATIONS

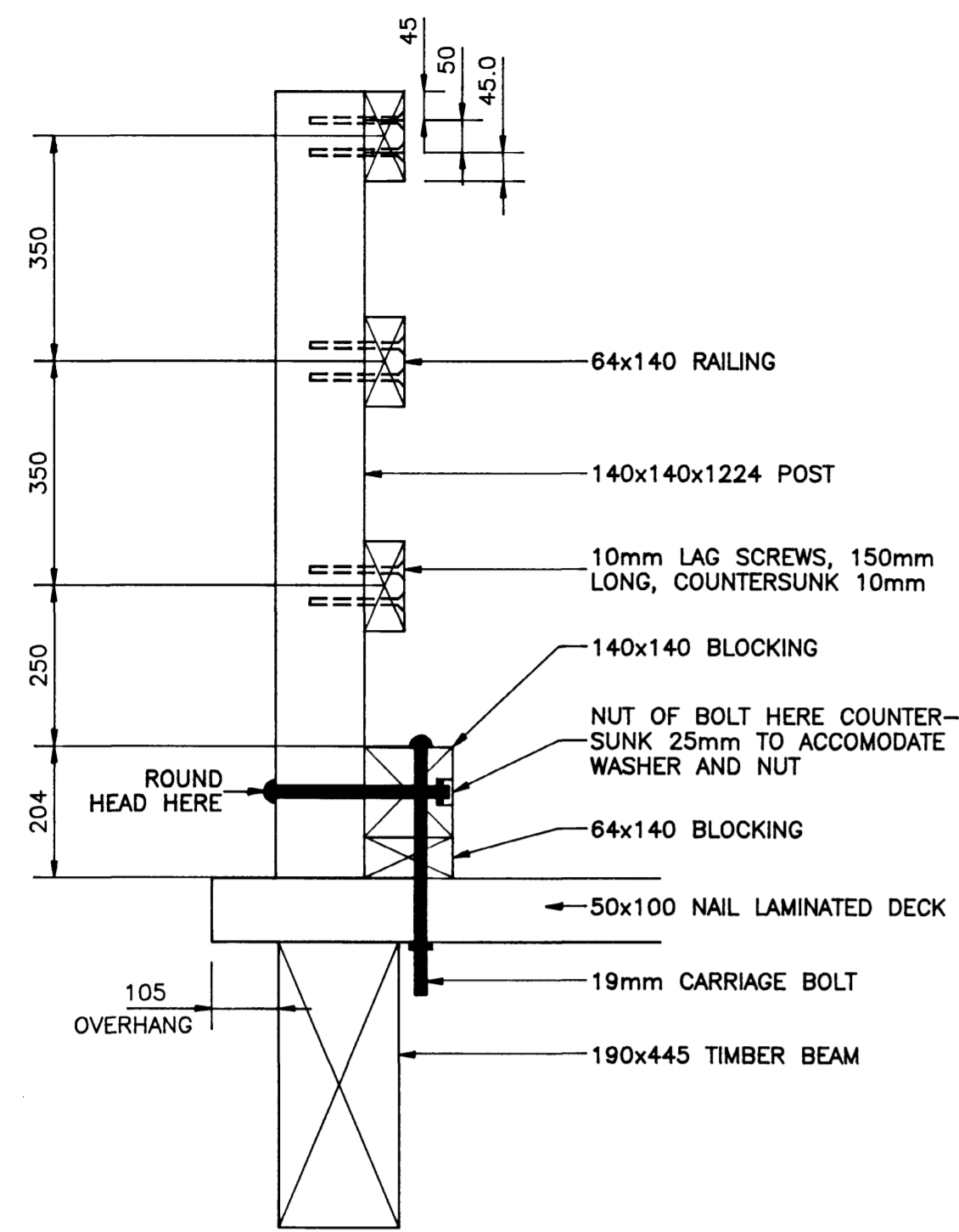
designed by / conception par K. DECONTIE approved by / approuvé par \_\_\_\_\_

drawn by / tracé par T. SITTER date / date AUGUST, 1993

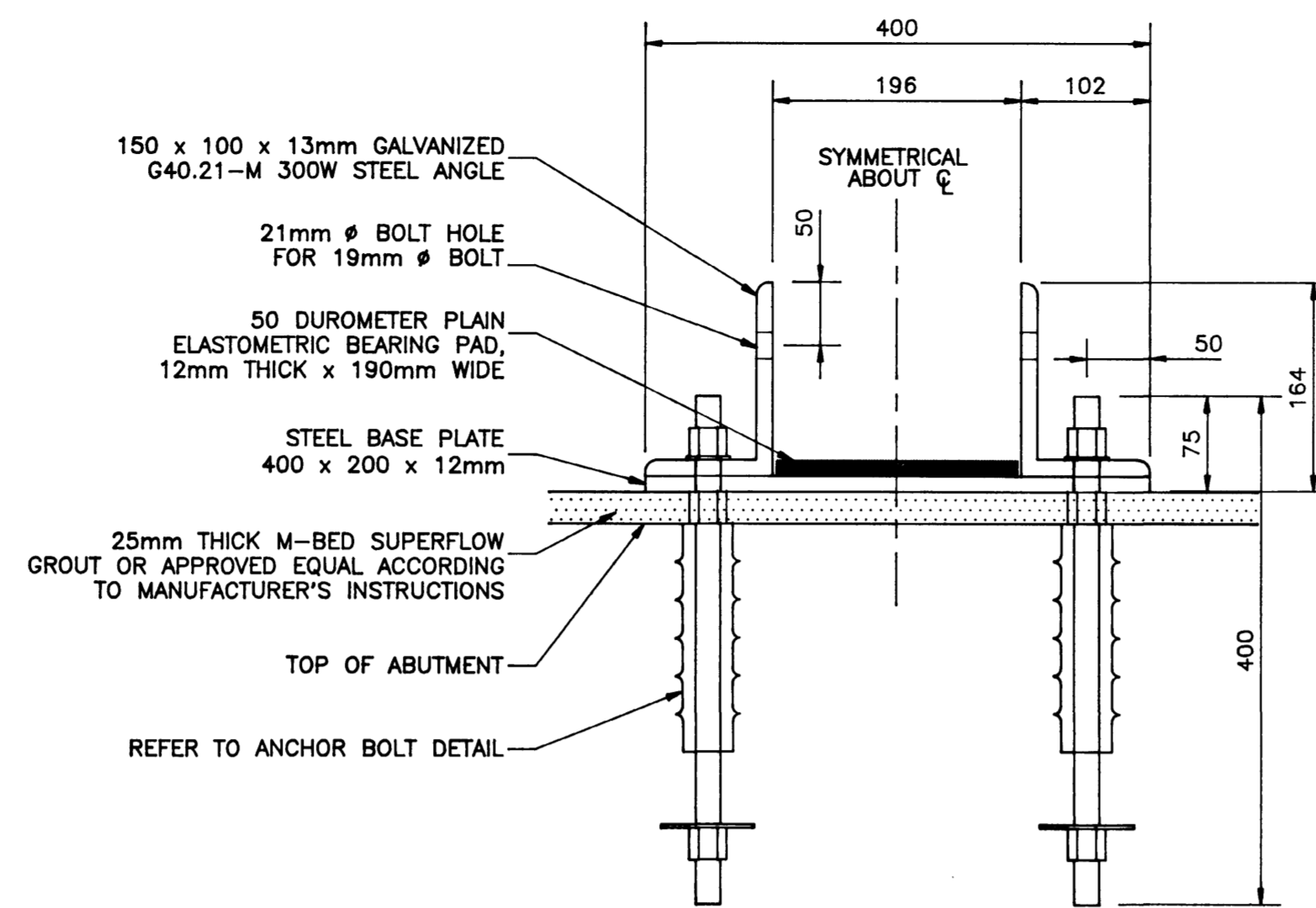
checked by / vérifié par K. DECONTIE scale / échelle 1 : 50

project asset number / numéro du projet d'immobilisation PROJECT NO. 88545 sheet no. / feuille no.

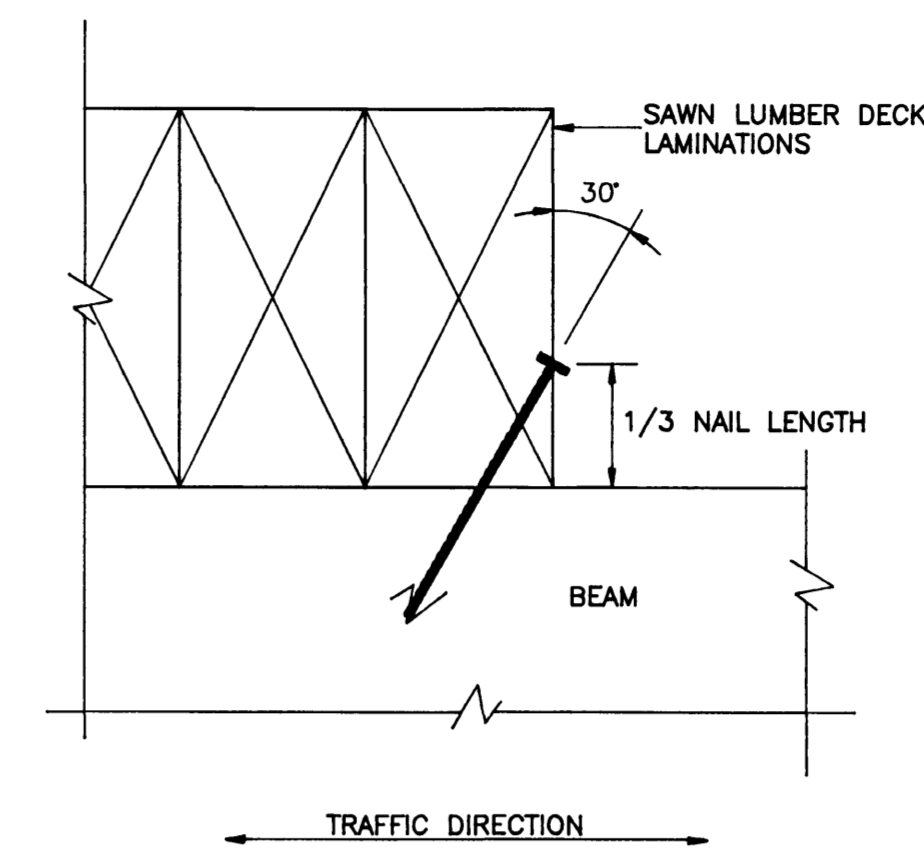
reference / drawing number / numéro de référence / dessin HWBU93R8 6 of 7



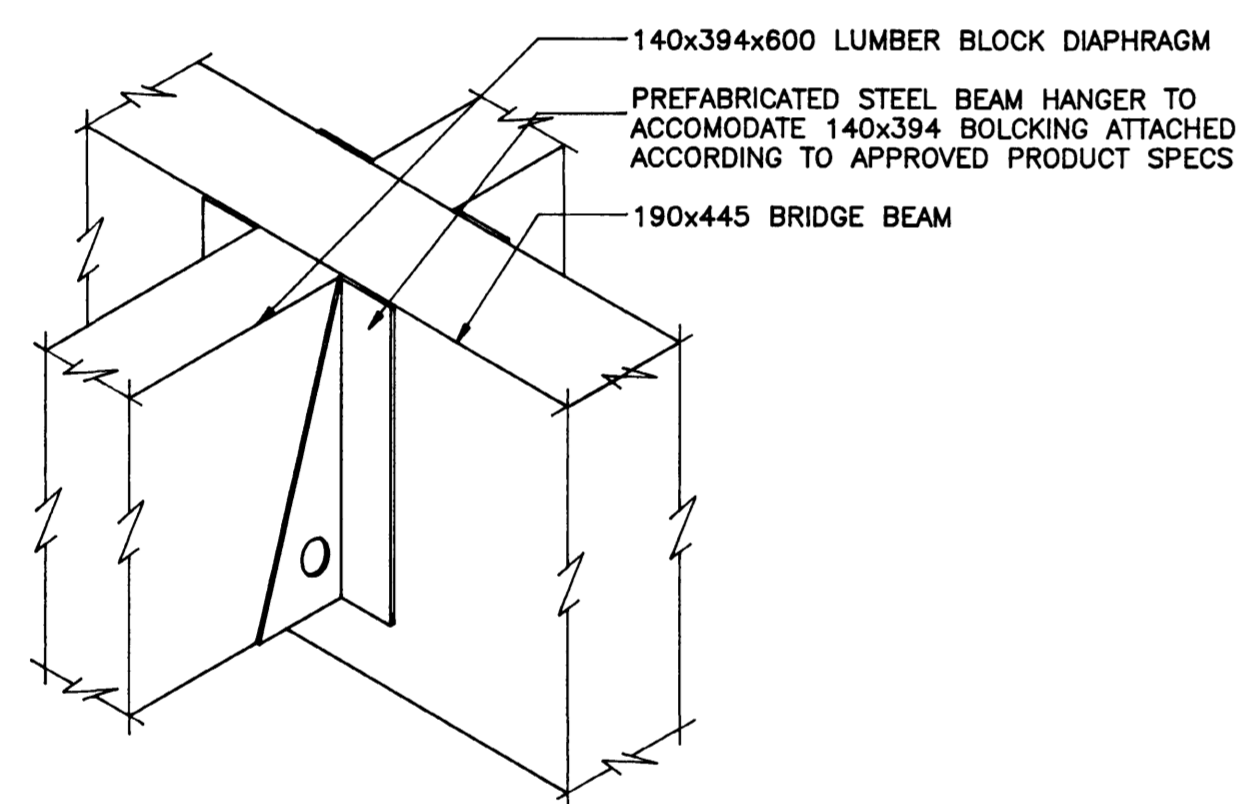
**RAILING DETAIL**  
SCALE = 1 : 10



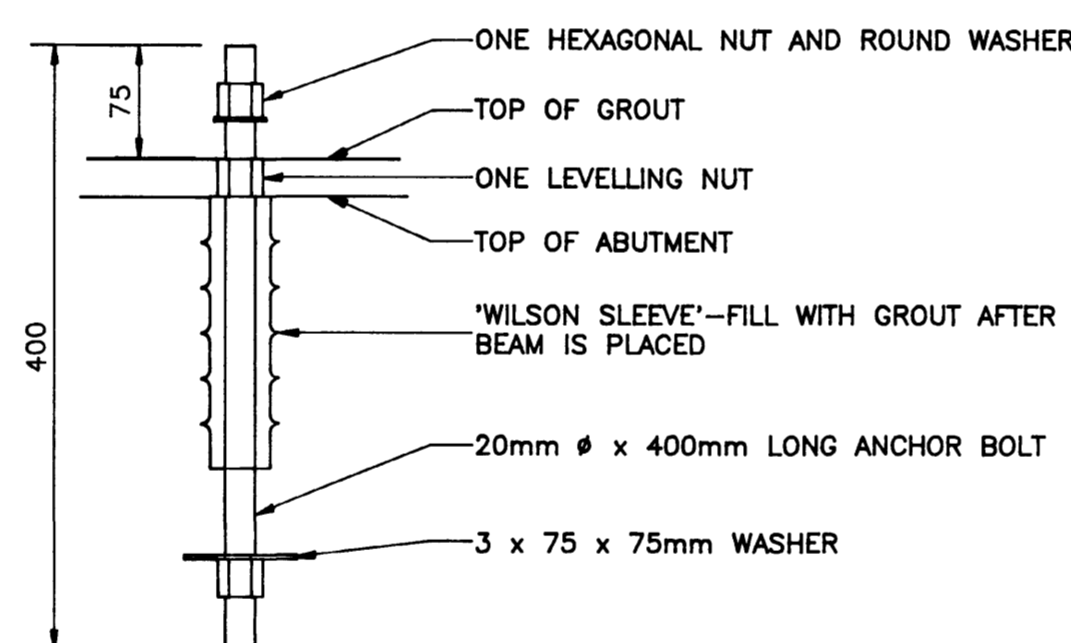
**BEARING PLATE DETAIL**  
SCALE = 1 : 5



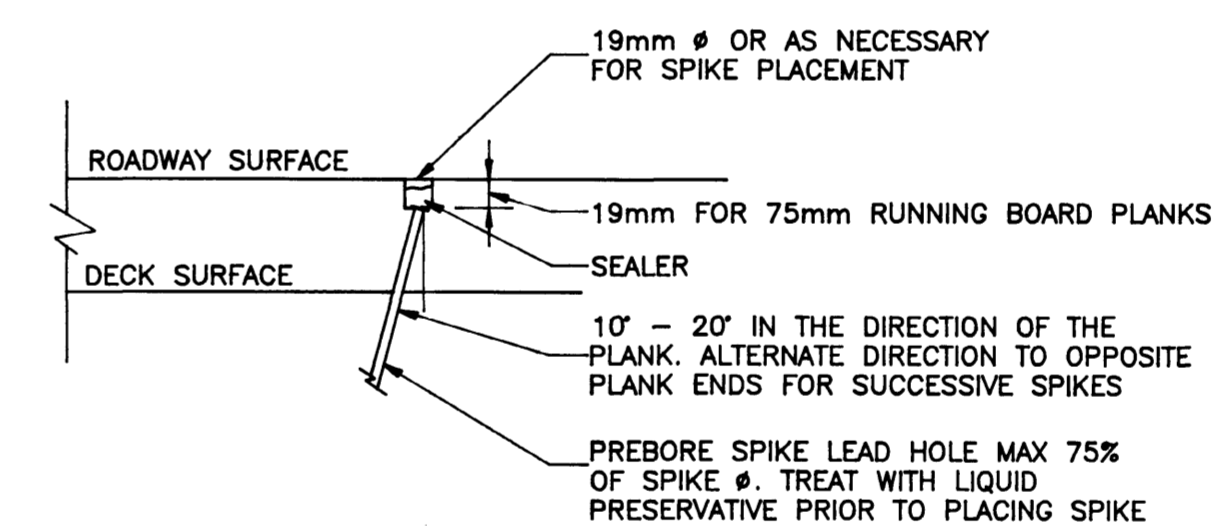
**DETAIL - TRANSVERSE LUMBER CONNECTION TO BEAM**  
SCALE = 1 : 1



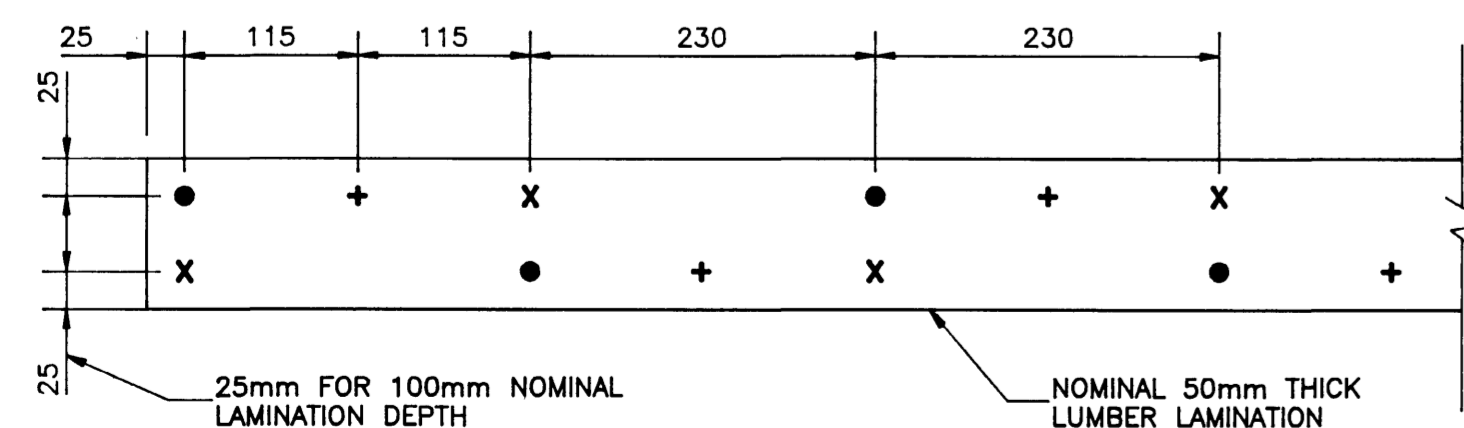
**STEEL BEAM HANGER DETAIL**  
N.T.S.



**ANCHOR BOLT DETAIL**  
SCALE = 1 : 5

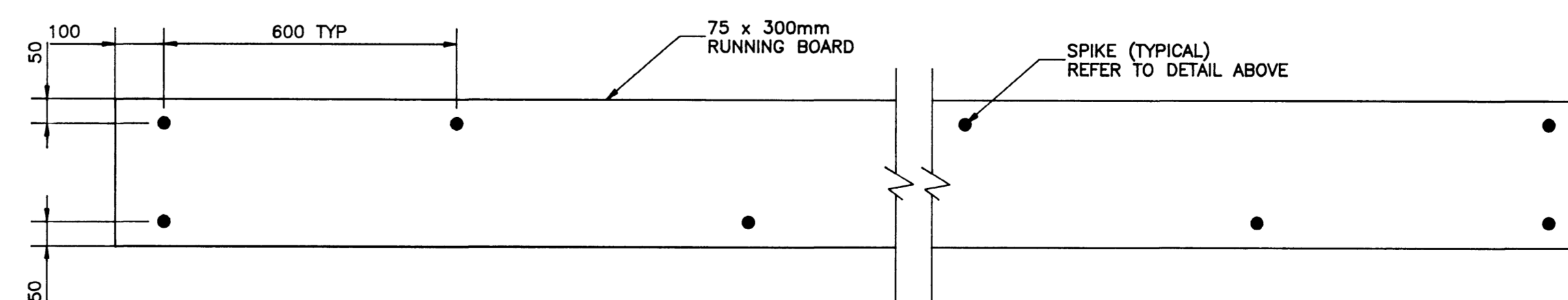


**SPIKE DETAIL**  
SCALE = 1 : 5



- INDICATES NAILS IN FIRST LAMINATION
- X INDICATES NAILS IN SECOND LAMINATION
- + INDICATES NAILS IN THIRD LAMINATION

**DETAIL - NAIL PLACEMENT PATTERN FOR TRANSVERSE NAIL-LAMINATED LUMBER DECK**  
SCALE = 1 : 5



**DETAIL - LUMBER WEARING SURFACE PLANK ATTACHMENT PATTERN FOR SPIKES**  
SCALE = 1 : 10

approved by / approuvé par \_\_\_\_\_ date / date \_\_\_\_\_  
20.08.93.  
Park Superintendent / Directeur du parc

no.	date	description	drawn by / tracé par	app'd by / approuvé par

revision / révision

A	A detail number	A numéro de détail
B	B location drawing number	B sur feuille no.
C	C drawing number	C numéro de feuille

**Environment Canada** / **Environnement Canada**  
**Parks Service** / **Service des parcs**  
**Architecture and Engineering** / **Architecture et génie**

project title / titre du projet

**SERVICE BRIDGE**

Bar U Ranch  
National Historic Site

drawing title / titre du dessin

**DETAILS AND SECTIONS**

designed by / conception par K. DECONTIE approved by / approuvé par \_\_\_\_\_

drawn by / tracé par T. SITTER date / date AUGUST, 1993

checked by / vérifié par K. DECONTIE scale / échelle AS NOTED

project asset number / numéro du projet d'immobilisation PROJECT NO. 86545 sheet no. / feuille no. \_\_\_\_\_

reference / drawing number / numéro de référence / dessin HWBU93R8 **7 of 7**