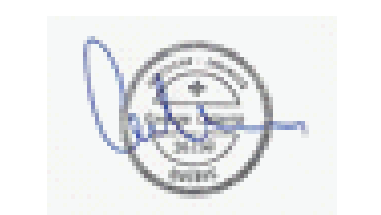


- LEGENDE**
- ANODE
 - ▲ ELECTRODE DE REFERENCE
 - ◆ COUPON DE CORROSION
 - M MISE A LA TERRE
 - ↔ ECHELLE
- LEGEND**
- ANODE
 - REFERENCE ELECTRODE
 - CORROSION SAMPLE
 - GROUND
 - LADDER

LES MESURES SUR LES PLANS SONT APPROXIMATIVES ET ELLES DOIVENT ETRE VERIFIEES SUR PLACE PAR L'ENTREPRENEUR.
 AVANT DE COMMENCER LES TRAVAUX, VERIFIER EN CONSEQUENCE, MESURER AVANT DE COUPER TOUTE PIECE.
 THE MEASUREMENTS INDICATED ON THE PLANS ARE APPROXIMATE AND SHOULD BE CHECKED ON SITE BY THE CONTRACTOR.
 BEFORE STARTING THE WORKS, CHECK ACCORDINGLY, AND MEASURE ADEQUATELY BEFORE CUTTING ANY COMPONENT.



4	11/05/24	POUR CONSTRUCTION FOR CONSTRUCTION	G.C.
3	11/02/01	PRELIMINAIRE 99% 99% REVIEW SUBMISSION	G.C.
2	10/08/23	PRELIMINAIRE 66% 66% REVIEW SUBMISSION	G.C.
1	10/08/13	PRELIMINAIRE 33% 33% REVIEW SUBMISSION	G.C.
No	Date	Révisions	App.

A	No de détail	A
C	Detail no	BC
	B Feuille no ... où le détail est exigé	
	Sheet no ... where detail required	
	C Feuille no ... où détaillé	
	Sheet no ... where detailed	

PLAN DE LOCATION
LOCATION PLAN
 0 7.5 m 1:150

LA LOCALISATION DES MISES A LA TERRE POUR LES BATEAUX SERA DETERMINEE SUR LE SITE
 THE LOCATION OF GROUNDS FOR THE SHIPS WILL BE DETERMINED ON THE SITE

Projet LA TABATIÈRE COMTE MANOUCAGAN COUNTY RECONSTRUCTION DU POSTE D'AMARAGE NO.1 BERTH NO.1 RECONSTRUCTION	
Dessin PLAN D'ENSEMBLE PROTECTION CATHODIQUE GENERAL LAYOUT CATHODIC PROTECTION	
Conçu par GEORGES CALAVRE ing. Date 2010/07/14	Designed by GEORGES CALAVRE ing. Date 2010/07/14
Dessiné par RENALD BILODEAU T.P. Date 2010/08/09	Drawn by RENALD BILODEAU T.P. Date 2010/08/09
Approuvé par GEORGES CALAVRE ing. Date 2010/08/12	Approved by GEORGES CALAVRE ing. Date 2010/08/12
Soumission MOHAMED ALI CISSE ing. Gestionnaire de projet de TPSC PWGSC Project Manager	
No de projet R.035092.001	
No de dessin QU-10055-M	No de feuille PC1/6

LES PUIITS DE TIRAGE SONT EN ACIER GALVANISÉ
 THE PULLING BOXES ARE MADE OUT OF GALVANIZED STEEL.

LES DIMENSION DU PUIITS DE TIRAGE NO. 8 ET 15 SONT: 13 x 626 x 626 x 300 DE HAUTEUR.
 THE PULLING BOX NO. 8 AND 15 DIMENSIONS ARE: 13 x 626 x 626x 300 HIGH.

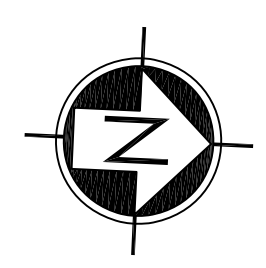
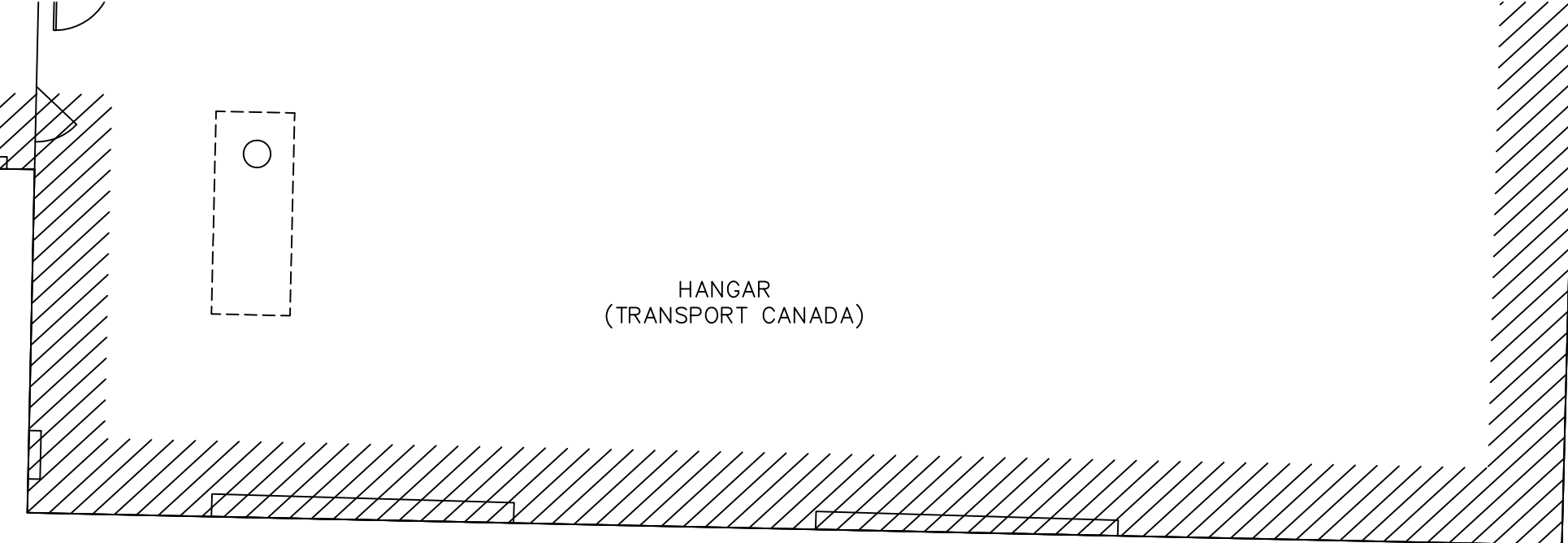
LES DIMENSION DE AUTRES PUIITS DE TIRAGE SONT: 13 x 426 x 426 x 300 DE HAUTEUR.
 THE DIMENSIONS OF THE OTHER PULLING BOXES ARE: 13 x 426 x 426 x 300 HIGH.

LES COUVERCLES DE PUIITS DE TIRAGE SONT ANTIDERAPANTS.
 THE COVERS OF THE PULLING BOXES ARE ANTI-SKID.

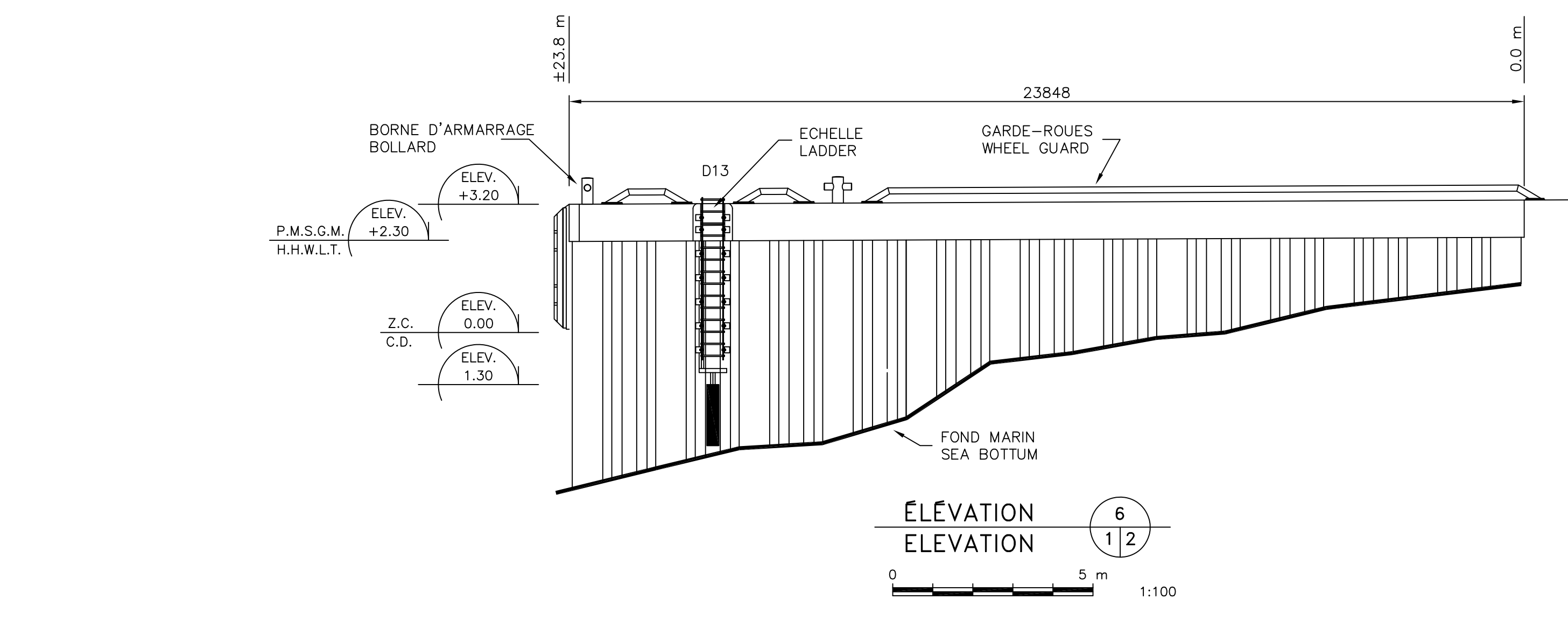
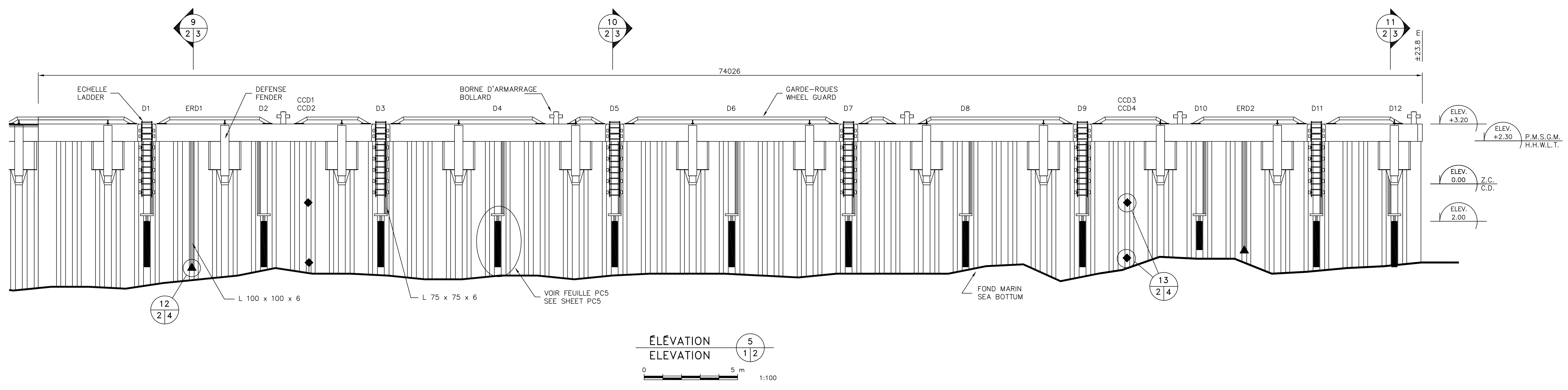
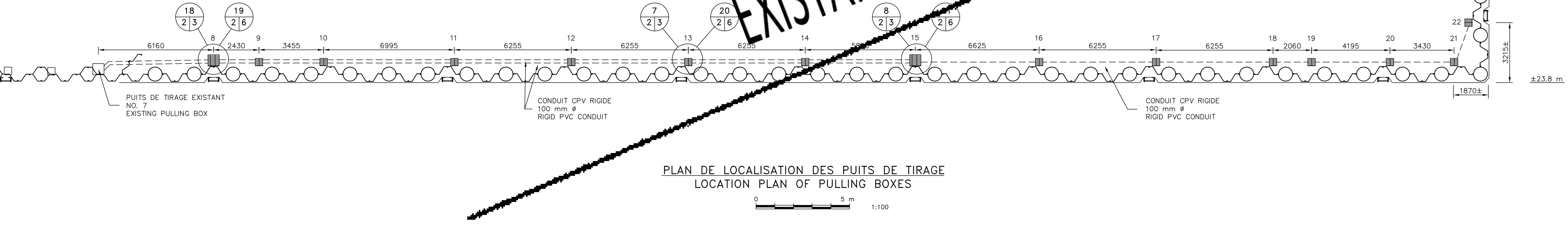
INSTALLER AUX COUVERCLES DES PUIITS DE TIRAGE UN TROU DE PIC NON PENETRANT.
 INSTALL A NON PENETRATING PICK HOLE AT THE PULLING BOXES COVERS.

L'ENTREPRENEUR DEVRA S'ASSURER QUE LES COUVERCLES DES PUIITS DE TIRAGE RESPECTENT LES CHARGES ADMISIBLE SUR LE QUAI.
 THE CONTRACTOR WILL ASCERTAIN THAT THE PULLING BOXES COVERS ARE COMPLYING WITH THE ALLOWABLE LOADS ON THE WHARF.

SOUQUETTER LES DETAILS DES PUIITS DE TIRAGE A L'INGENIEUR POUR APPROBATION AVANT LE DEBUT DES TRAVAUX.
 SUBMIT THE DETAILS OF THE PULLING BOXES TO THE DEPARTAMENTAL REPRESENTATIVE FOR APPROVAL BEFORE THE BEGINNING OF THE WORKS.



LEGENDE	LEGEND
— CONDUIT SOUTERRAIN	UNDERGROUND CONDUIT
■ PUIITS DE TIRAGE	PULLING BOX
— ECHELLE	LADDER



LEGENDE	LEGEND
■ ANODE	ANODE
▲ ELECTRODE DE REFERENCE	REFERENCE ELECTRODE
◆ COUPON DE CORROSION	CORROSION SAMPLE

LES MESURES SUR LES PLANS SONT APPROXIMATIVES ET ELLES DOIVENT ETRE VERIFIEES SUR PLACE PAR L'ENTREPRENEUR.

AVANT DE COMMENCER LES TRAVAUX, VERIFIER EN CONSEQUENCE, MESURER AVANT DE COUPER TOUTE PIECE.

THE MEASUREMENTS INDICATED ON THE PLANS ARE APPROXIMATE AND SHOULD BE CHECKED ON SITE BY THE CONTRACTOR.

BEFORE STARTING THE WORKS, CHECK ACCORDINGLY, AND MEASURE ADEQUATELY BEFORE CUTTING ANY COMPONENT.



No	Date	Révisions	App.
4	11/05/24	POUR CONSTRUCTION FOR CONSTRUCTION	G.C.
3	11/02/01	PRELIMINAIRES 99% 99% REVIEW SUBMISSION	G.C.
2	10/08/23	PRELIMINAIRES 60% 60% REVIEW SUBMISSION	G.C.
1	10/08/13	PRELIMINAIRES 33% 33% REVIEW SUBMISSION	G.C.

A	B	C
A	B	C

Projet / Project
LA TABATIERE
 COMTE MANOUCOUAN COUNTY
 RECONSTRUCTION DU POSTE D'AMARAGE NO.1
 BERTH NO.1
 RECONSTRUCTION

Dessin / Drawing
 LOCALISATION DES PUIITS DE TIRAGE
 ELEVATIONS
 LOCATION OF PULLING BOXES
 ELEVATIONS

Conçu par / Designed by
 GEORGES CALAVRE ing. 2010/07/14 Date

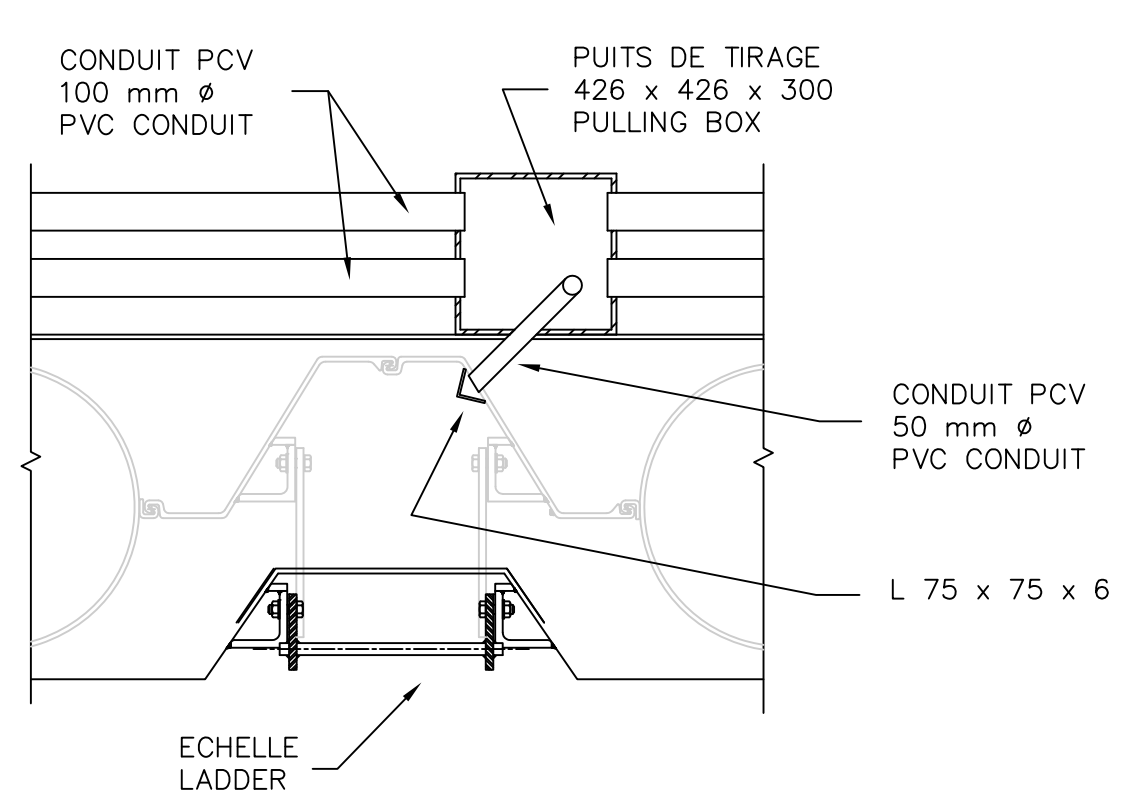
Dessiné par / Drawn by
 RENALD BILGODEAU T.P. 2010/08/09 Date

Approuvé par / Approved by
 GEORGES CALAVRE ing. 2010/09/13 Date

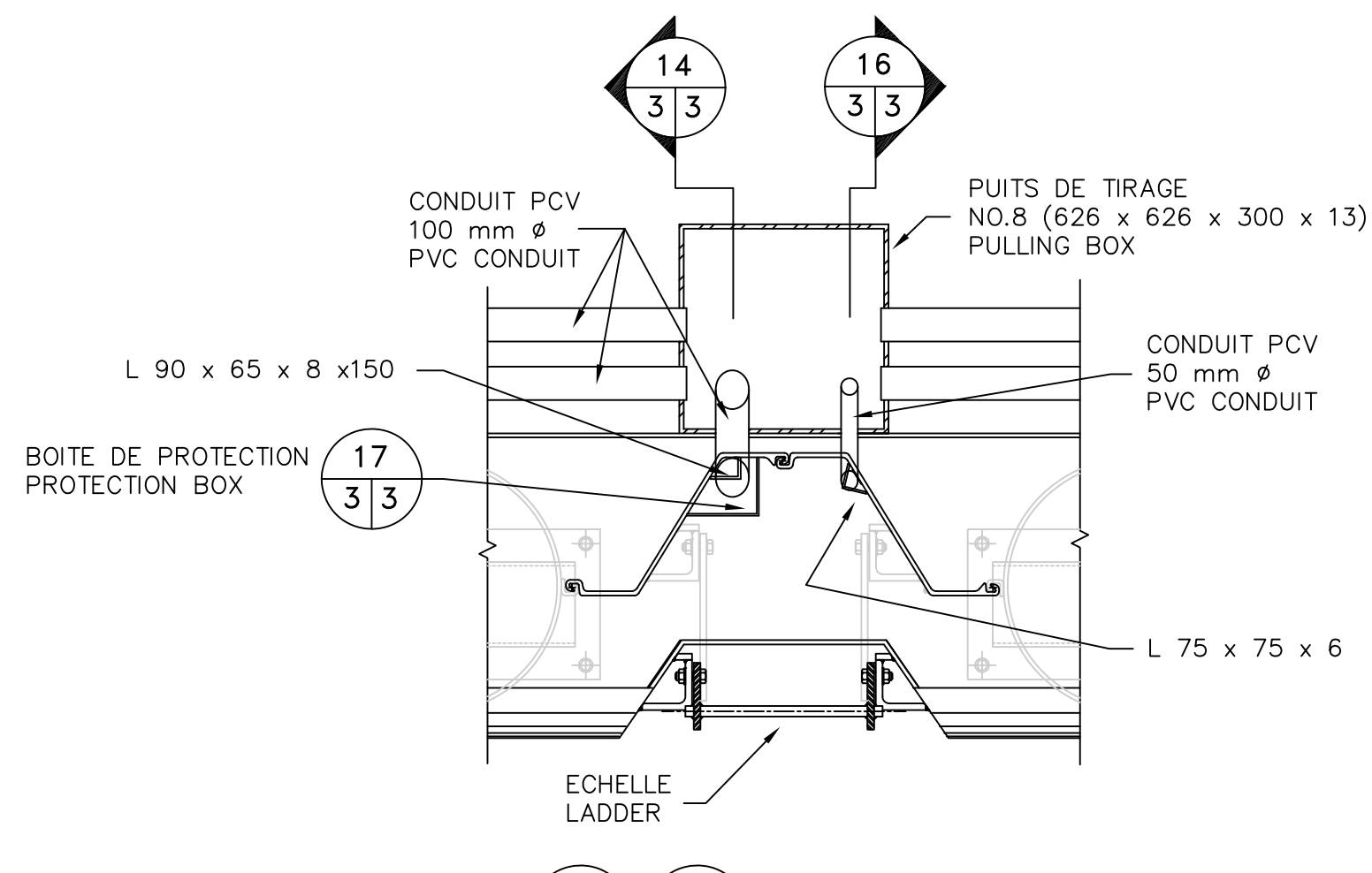
Soumission / Tender
 MOHAMED ALI CISSE ing. 2010/09/13 Date
 Gestionnaire de projet de TPSGC / PWGSC Project Manager

No de projet / Project no
 R.035092.001

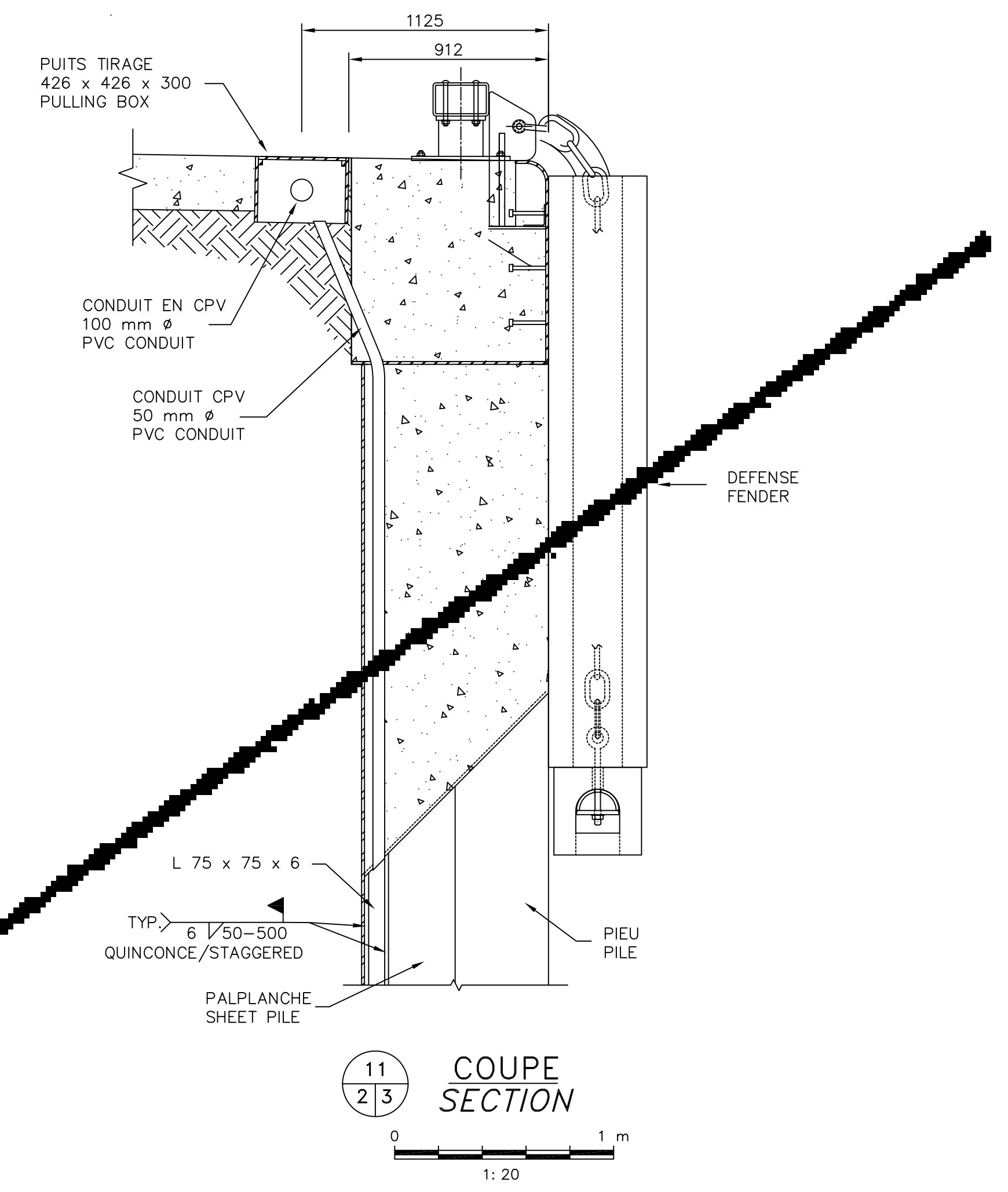
No de dessin / Drawing no | No de feuille / Sheet no
 QU-10055-M | PC2/6



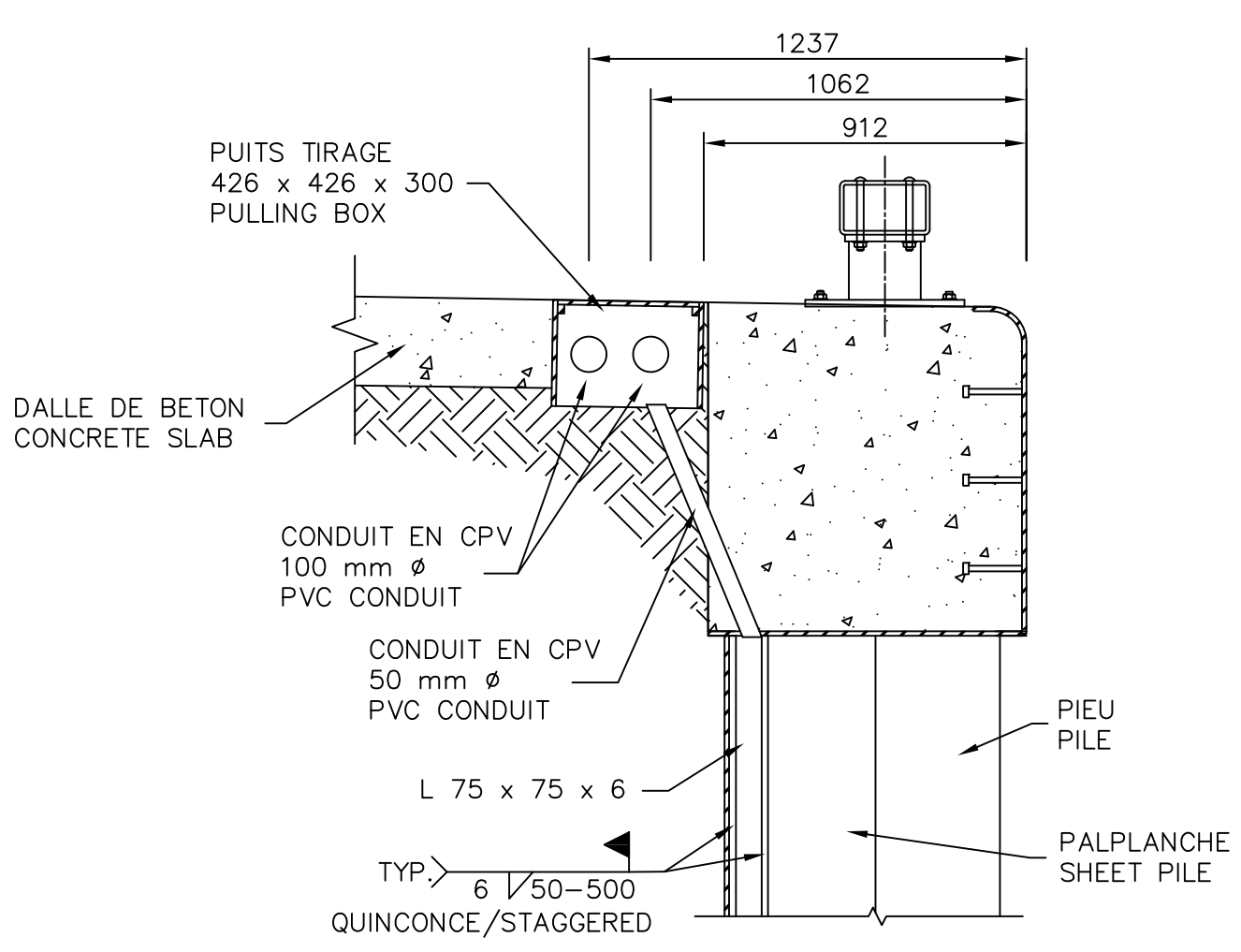
7
2/3
DETAIL TYPE AVEC OU SANS ECHELLE
TYPICAL DETAIL WITH OR WITHOUT LADDER
0 1 m
1:20



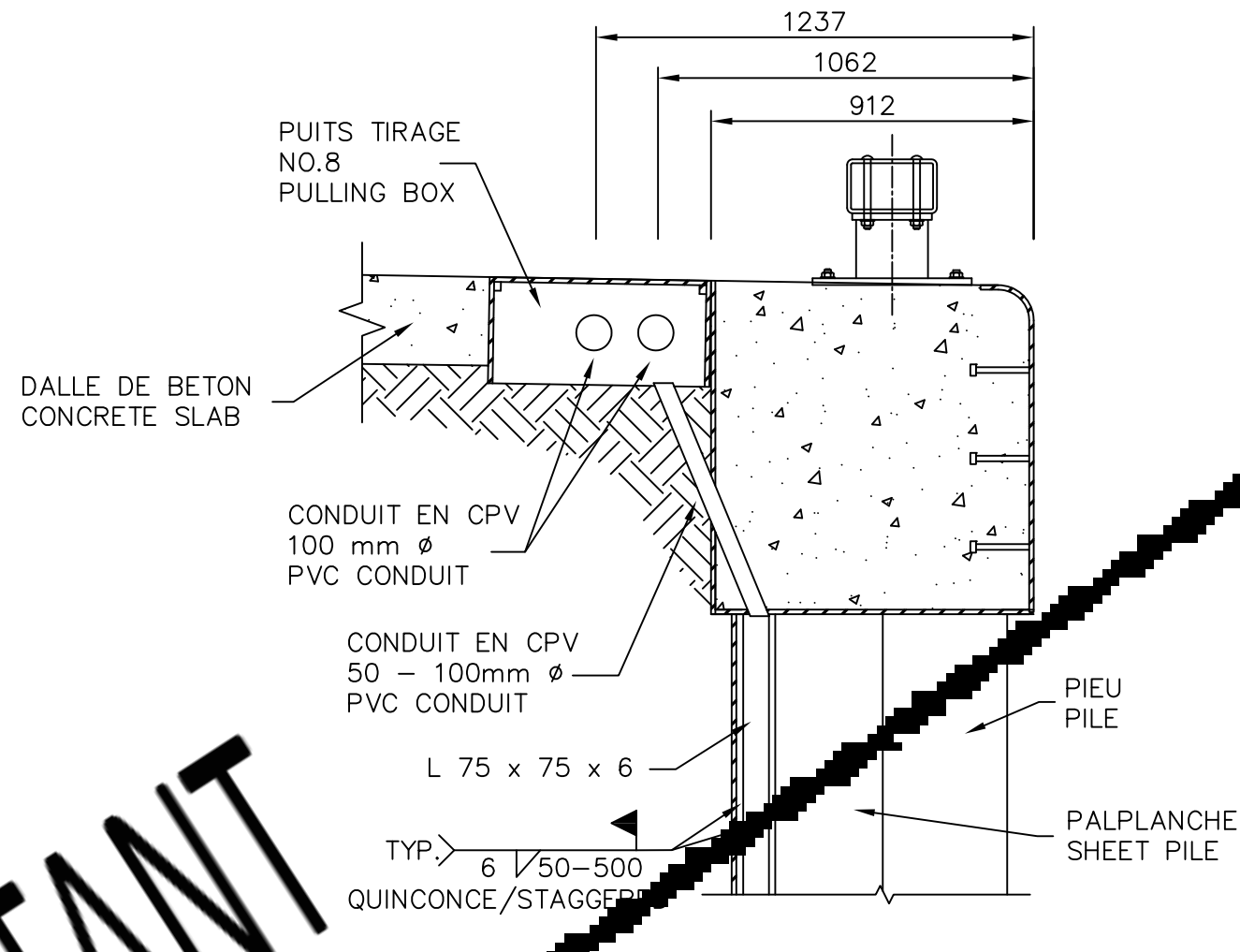
14
3/3
16
3/3
DETAIL
DETAIL
0 1 m
1:20



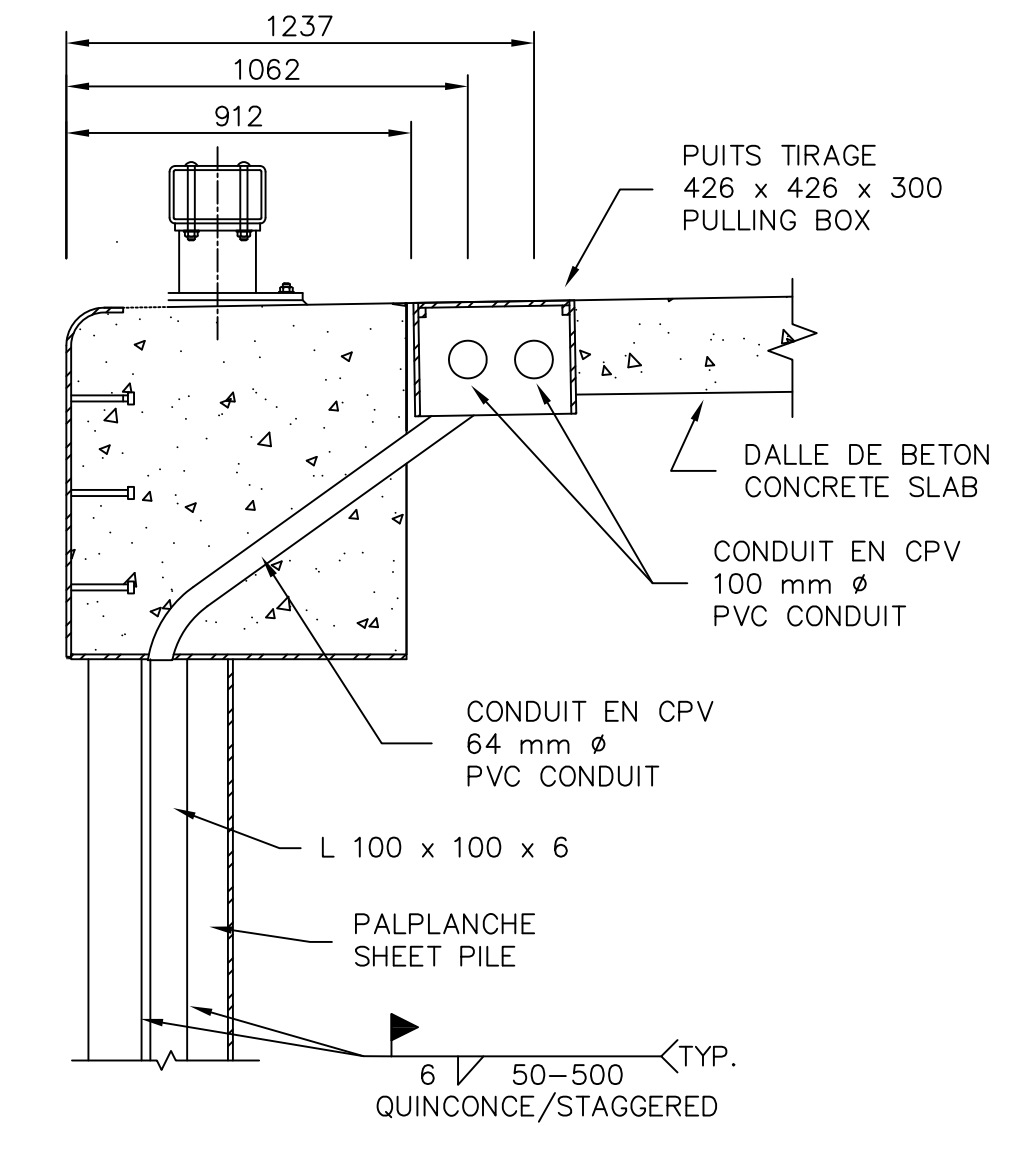
11
2/3
COUPE SECTION
0 1 m
1:20



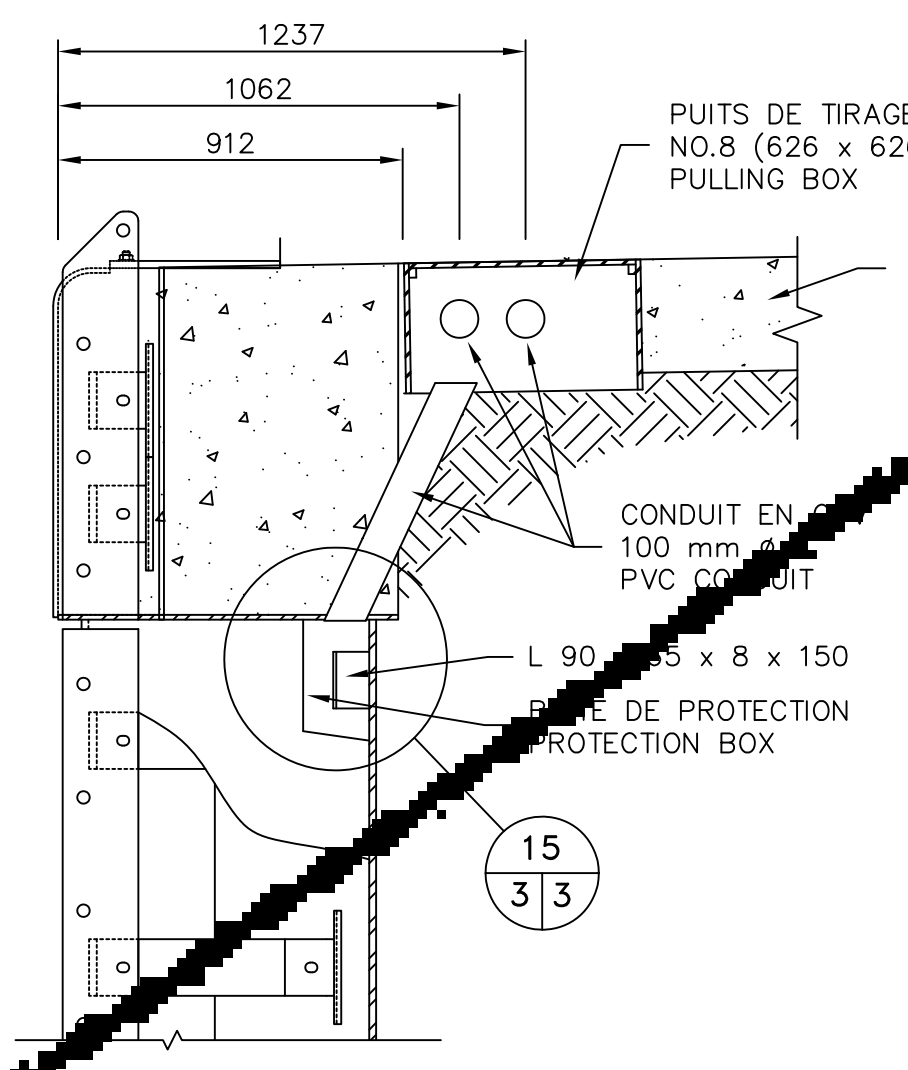
10
2/3
COUPE TYPE AVEC OU SANS ECHELLE
TYPICAL SECTION WITH OR WITHOUT LADDER
0 1 m
1:20



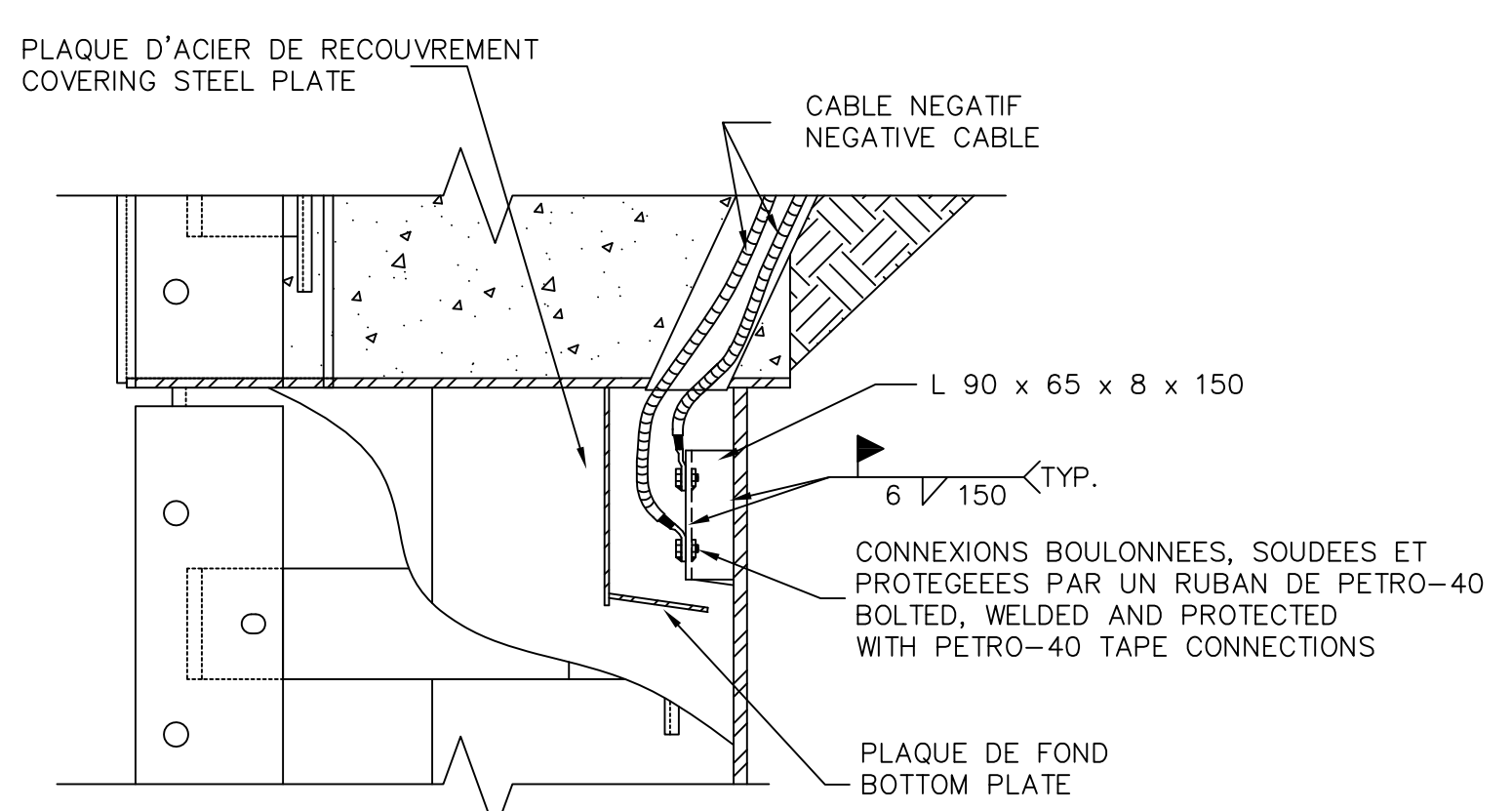
16
2/3
COUPE SECTION
0 1 m
1:20



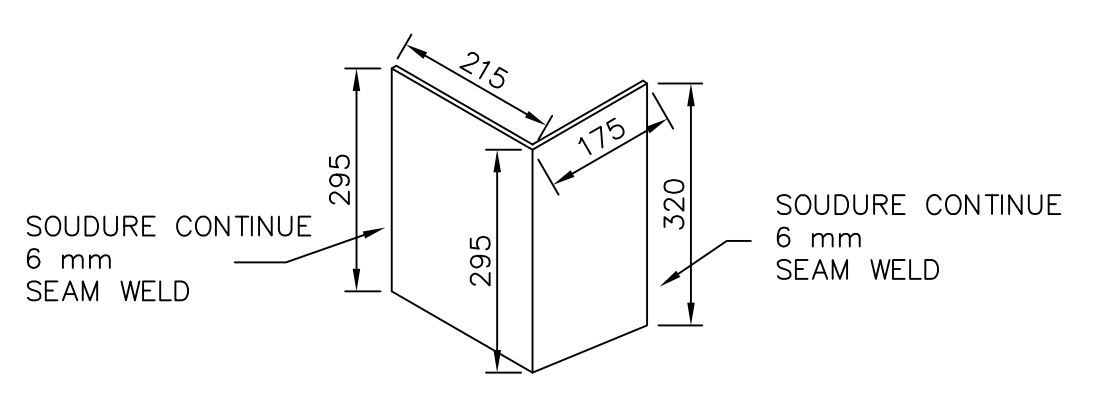
9
2/3
COUPE SECTION
0 1 m
1:20



14
3/3
COUPE SECTION
0 1 m
1:20



15
3/3
DETAIL
DETAIL
0 500 mm
1:10



17
3/3
BOITE DE PROTECTION
PROTECTION BOX
0 500 mm
1:10

NOTE: MEULER TOUTES LES ARRETES DES CONDUITS
POUVANT ENTRER EN CONTACT AVEC LES FILS ELECTRIQUES
NOTE: GRIND DOWN ALL THE CONDUITS EDGES THAT CAN TOUCH
THE ELECTRICAL CABLES

EXISTANT

LES MESURES SUR LES PLANS
SONT APPROXIMATIVES ET ELLES
DOIVENT ÊTRE VÉRIFIÉES SUR PLACE
PAR L'ENTREPRENEUR.
AVANT DE COMMENCER LES
TRAVAUX, VÉRIFIER EN
CONSEQUENCE, MESURER AVANT DE
COUPER TOUTE PIÈCE.
THE MEASUREMENTS INDICATED ON
THE PLANS ARE APPROXIMATE AND
SHOULD BE CHECKED ON SITE
BY THE CONTRACTOR.
BEFORE STARTING THE WORKS,
CHECK ACCORDINGLY, AND MEASURE
ADEQUATELY BEFORE CUTTING ANY
COMPONENT.



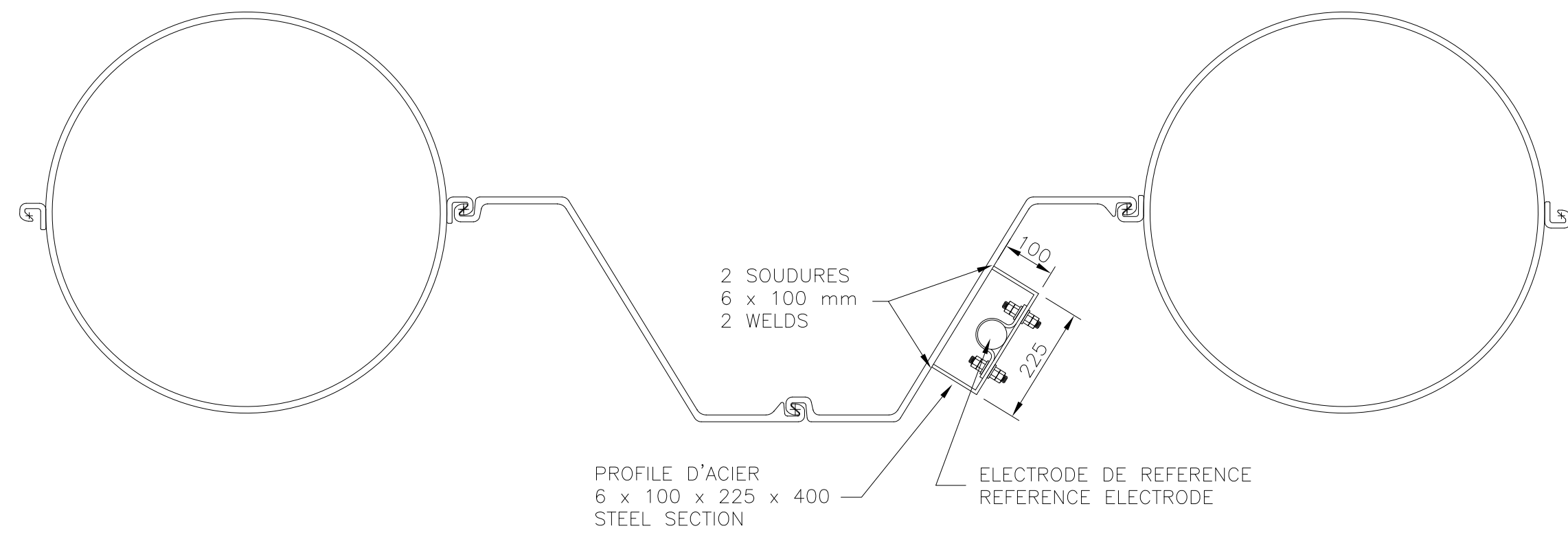
No	Date	Révisions	App.
4	11/05/24	POUR CONSTRUCTION FOR CONSTRUCTION	G.C.
3	11/02/01	PRELIMINAIRES 99% 99% REVIEW SUBMISSION	G.C.
2	10/08/23	PRELIMINAIRES 66% 66% REVIEW SUBMISSION	G.C.
1	10/08/13	PRELIMINAIRES 33% 33% REVIEW SUBMISSION	G.C.

A No de détail		Detail no	
A	C	A	BC

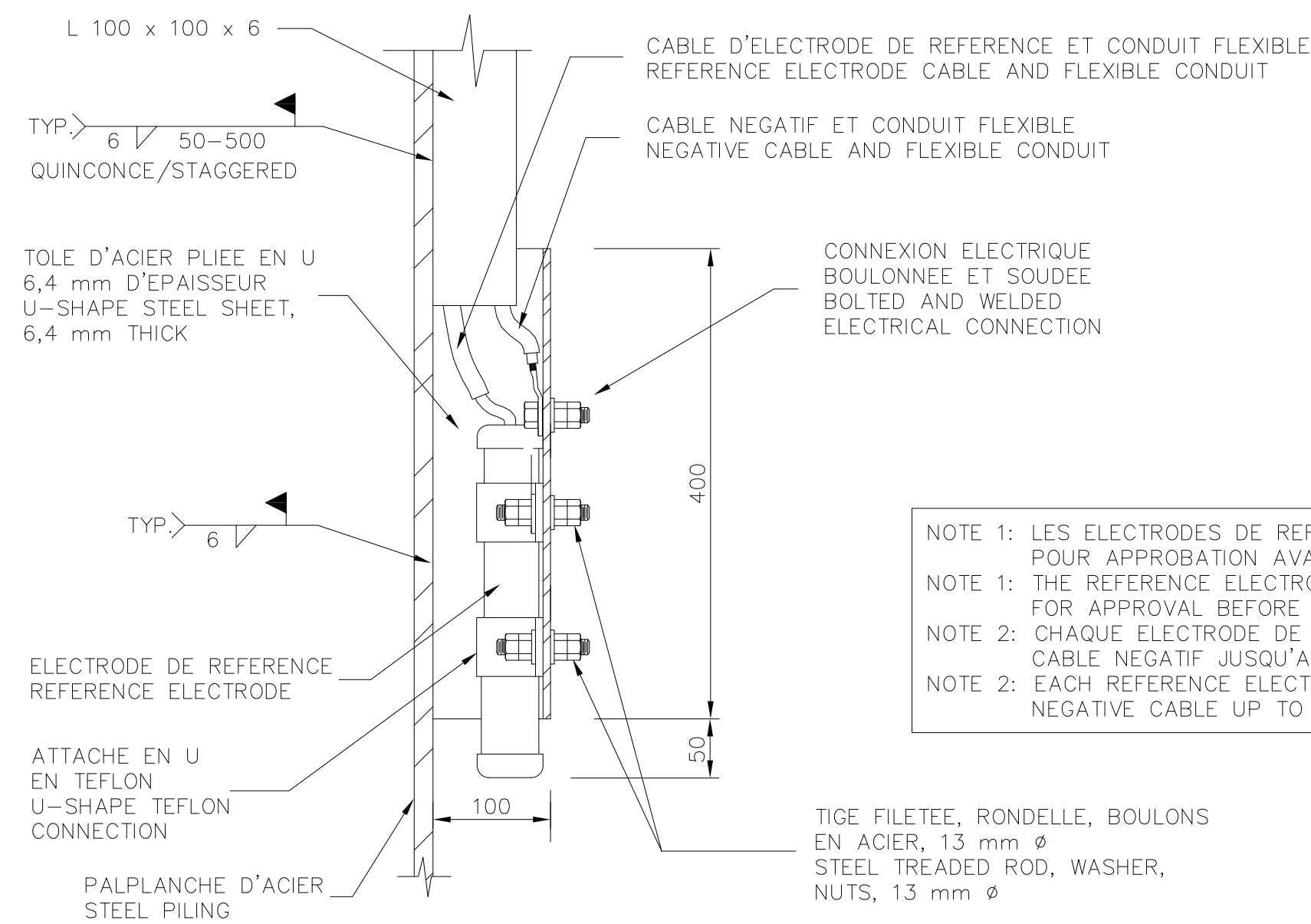
Projet / Project
 LA TABATIÈRE
 COMTE MANICOUAGAN COUNTY
 RECONSTRUCTION DU POSTE D'AMARAGE NO.1
 BERTH NO.1
 RECONSTRUCTION

Dessin / Drawing
 DETAILS
 DETAILS

Conçu par / Designed by	GEORGES CALAVRE ing.	2010/07/14	Date
Dessiné par / Drawn by	RENALD BILODEAU T.P.	2010/08/09	Date
Approuvé par / Approved by	GEORGES CALAVRE ing.	2010/08/09	Date
Soumission / Tender	MOHAMED ALI Cissé ing.	PWGSC Project Manager	
No de projet / Project no	R.035092.001		
No de dessin / Drawing no	QU-10055-M	No de feuille / Sheet no	PC3/6

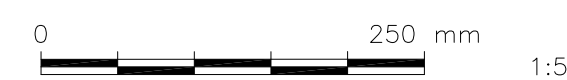


POSITION DE L'ELECTRODE DE REFERENCE SUR LA PALPLANCHE
POSITION OF THE REFERENCE ELECTRODE ON THE SHEET PILE

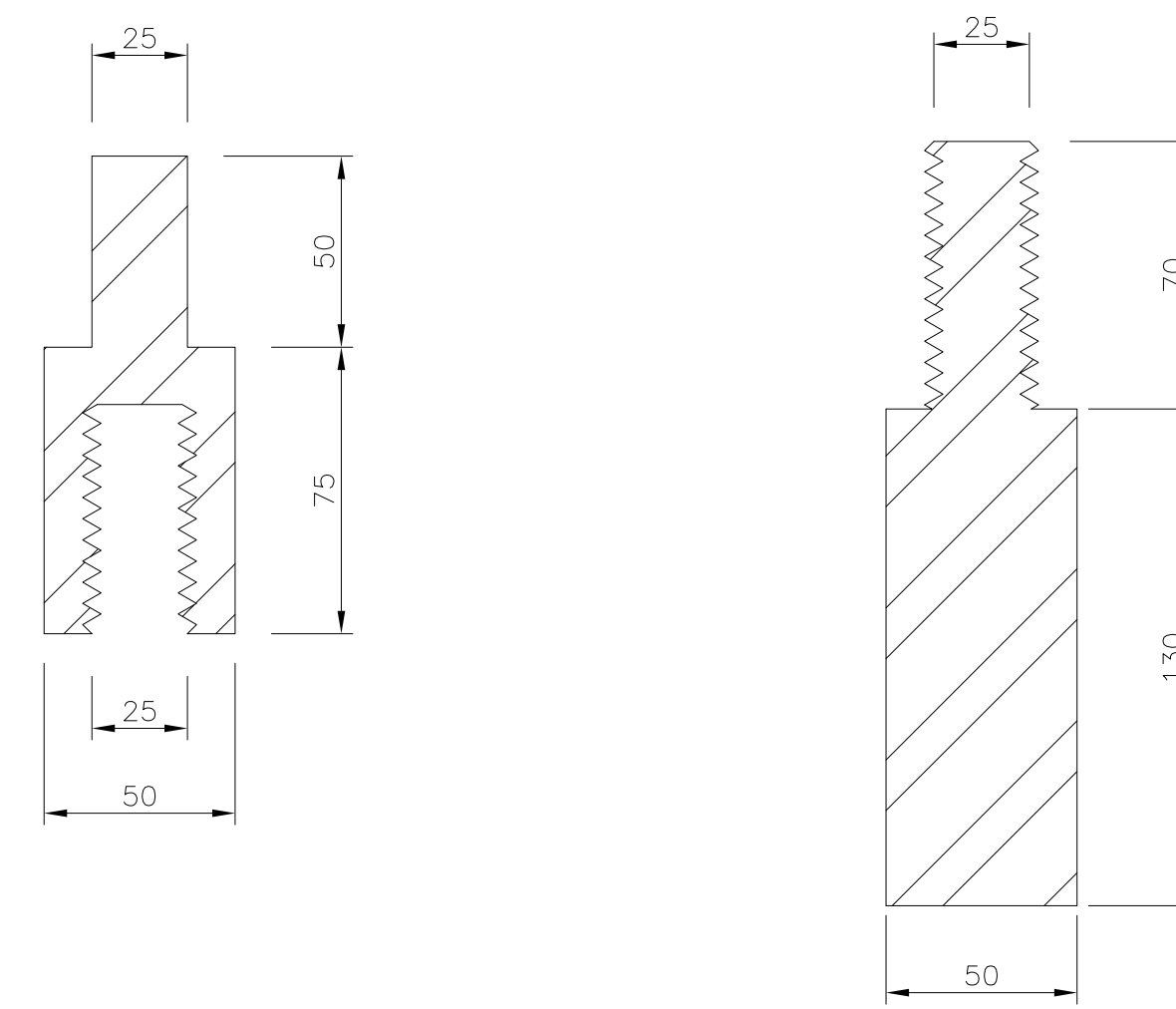


NOTE 1: LES ELECTRODES DE REFERENCE SERONT SOUMISES POUR APPROBATION AVANT LA LIVRAISON SUR LE CHANTIER
NOTE 1: THE REFERENCE ELECTRODES WILL BE SUBMITTED FOR APPROVAL BEFORE SHIPPING TO THE SITE
NOTE 2: CHAQUE ELECTRODE DE REFERENCE A SON PROPRE CABLE NEGATIF JUSQU'AU SYSTEME D'ACQUISITION DE DONNEES
NOTE 2: EACH REFERENCE ELECTRODE HAS ITS OWN NEGATIVE CABLE UP TO THE RMU

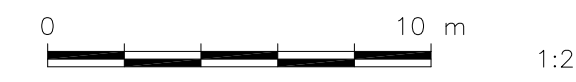
DETAILS TYPES DE L'ELECTRODE DE REFERENCE
TYPICAL DETAILS OF THE REFERENCE ELECTRODE



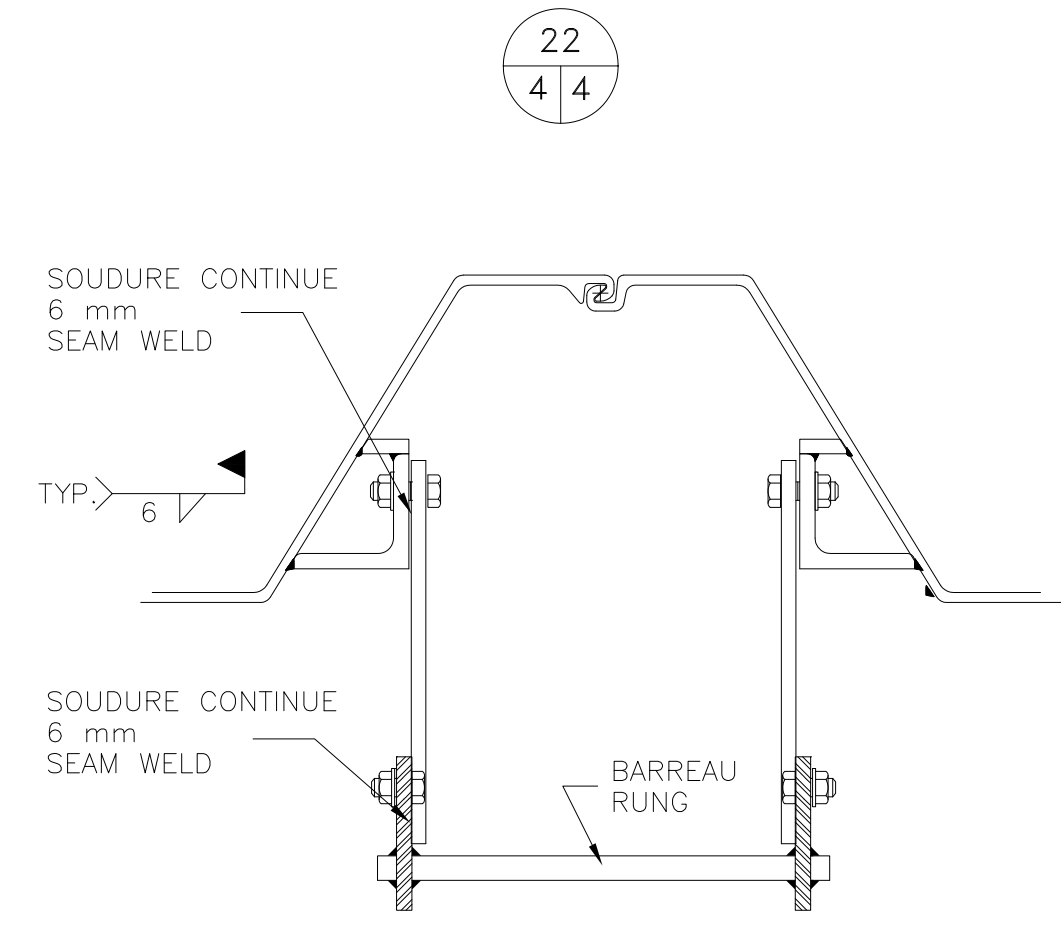
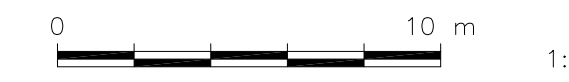
12
24



DETAIL DE LA CONNEXION
DETAIL OF CONNECTION

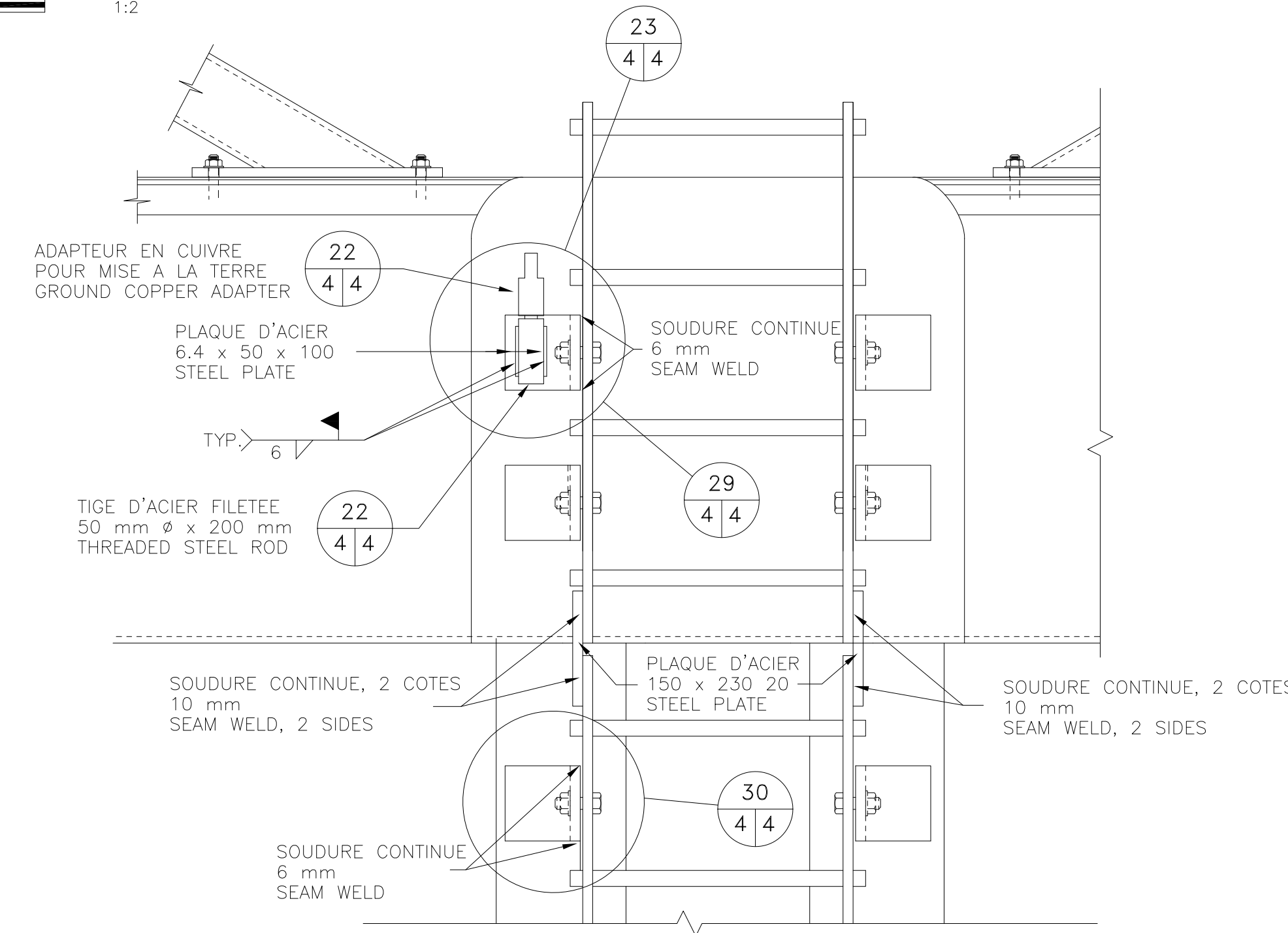


DETAIL DE LA TIGE D'ACIER FILETEE
DETAIL OF THREADED STEEL ROD



30
44 ECHELLE - PARTIE INFERIEURE
LADDER - LOWER PART

VUE EN PLAN
PLAN VIEW

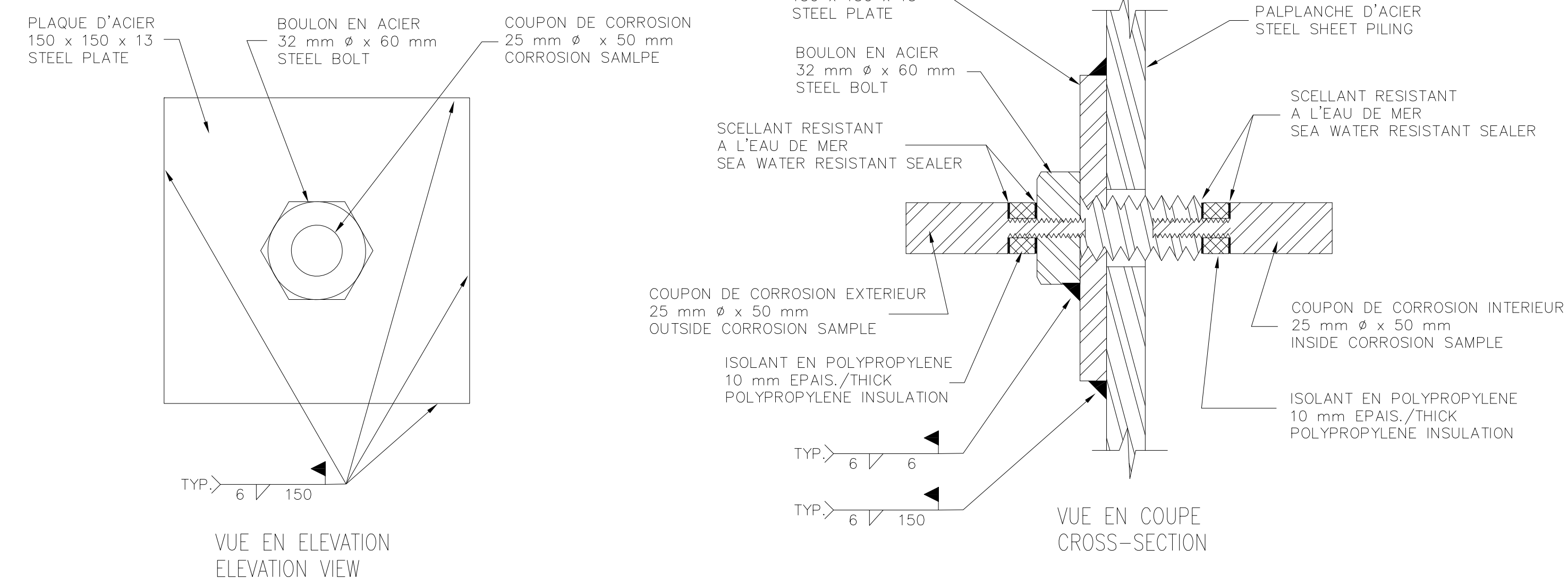


ECHELLE - VUE EN ELEVATION
LADDER - ELEVATION VIEW

DETAILS DE CONNEXION DE MISE A LA TERRE
GROUND CONNECTION DETAILS



NOTE 1: LA CONTINUTE ELECTRIQUE DES MISES A LA TERRE AVEC LES PALPLANCHES DEVRA ETRE VERIFIEE PAR L'ENTREPRENEUR
NOTE 1: THE ELECTRICAL CONTINUITY OF THE GROUND WITH THE SHEET PILES MUST BE VERIFIED BY THE CONTRACTOR



VUE EN ELEVATION
ELEVATION VIEW

VUE EN COUPE
CROSS-SECTION

NOTE: LES COUPONS DE CORROSION SERONT SOUMIS POUR APPROBATION, AVANT LA LIVRAISON SUR LE CHANTIER
NOTE: THE CORROSION SAMPLES WILL BE SUBMITTED FOR APPROVAL, BEFORE SHIPPING TO THE SITE

13
24 DETAIL TYPE DES COUPONS DE CORROSION POUR PALPLANCHE
TYPICAL DETAIL OF CORROSION SAMPLES FOR STEEL SHEET PILING



LES MESURES SUR LES PLANS SONT APPROXIMATIVES ET ELLES DOIVENT ETRE VERIFIEES SUR PLACE PAR L'ENTREPRENEUR.

AVANT DE COMMENCER LES TRAVAUX, VERIFIER EN CONSEQUENCE, MESURER AVANT DE COUPER TOUTE PIECE.

THE MEASUREMENTS INDICATED ON THE PLANS ARE APPROXIMATE AND SHOULD BE CHECKED ON SITE BY THE CONTRACTOR.

BEFORE STARTING THE WORKS, CHECK ACCORDINGLY, AND MEASURE ADEQUATELY BEFORE CUTTING ANY COMPONENT.



4	11/05/24	POUE CONSTRUCTION FOR CONSTRUCTION	G.C.
3	11/02/01	PRELIMINAIRES 99% 99% REVIEW SUBMISSION	G.C.
2	10/08/23	PRELIMINAIRES 66% 66% REVIEW SUBMISSION	G.C.
1	10/08/13	PRELIMINAIRES 33% 33% REVIEW SUBMISSION	G.C.

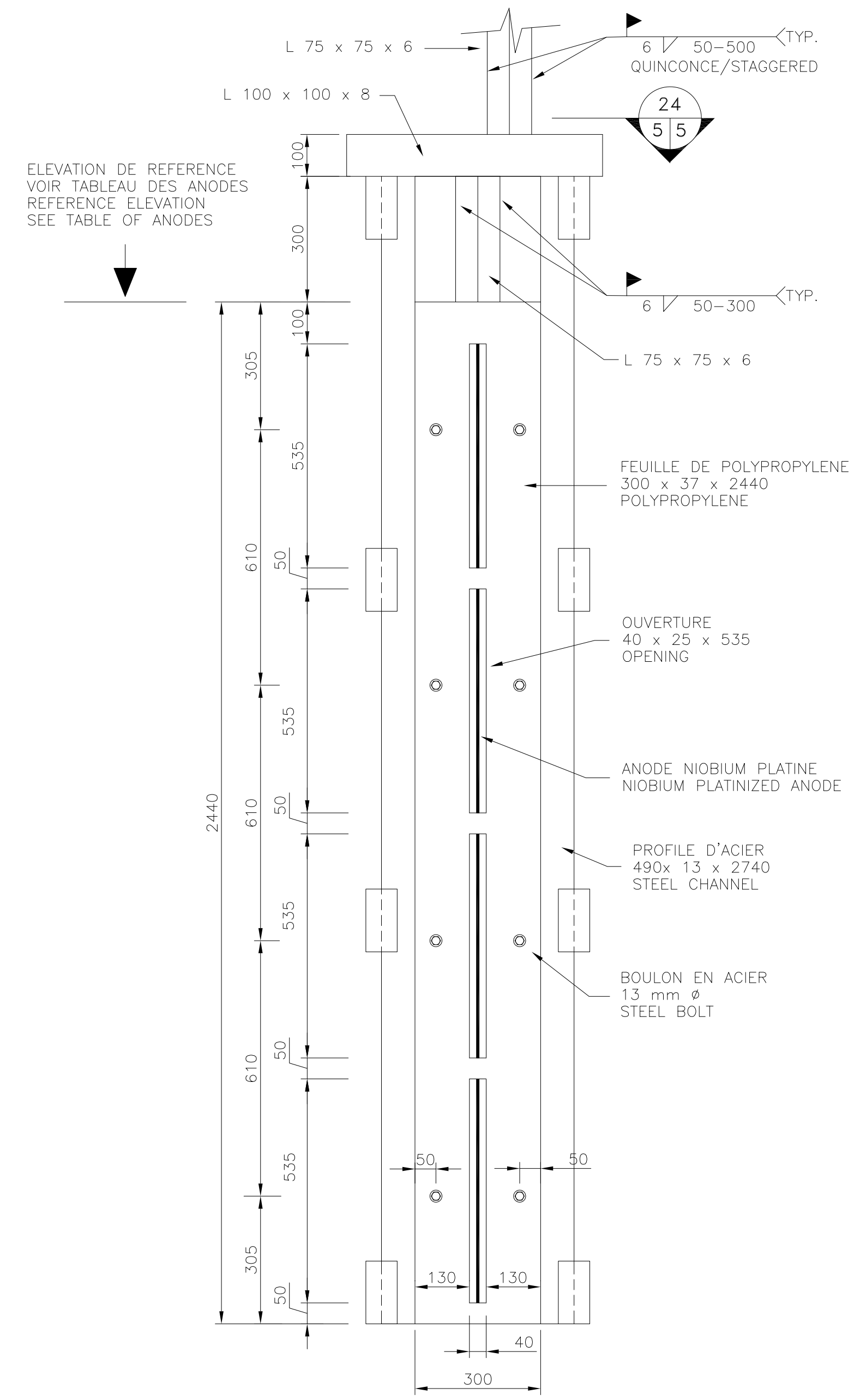
No	Date	Révisions	App.
----	------	-----------	------

A	No de détail / Detail no	A
B	Feuille no ... où le détail est exigé / Sheet no ... where detail required	BC
C	Feuille no ... où détails / Sheet no ... where detailed	

Projet / Project
LA TABATIÈRE
COMTE MANOUGAN COUNTY
RECONSTRUCTION DU POSTE D'AMARAGE NO.1 BERTH NO.1
RECONSTRUCTION

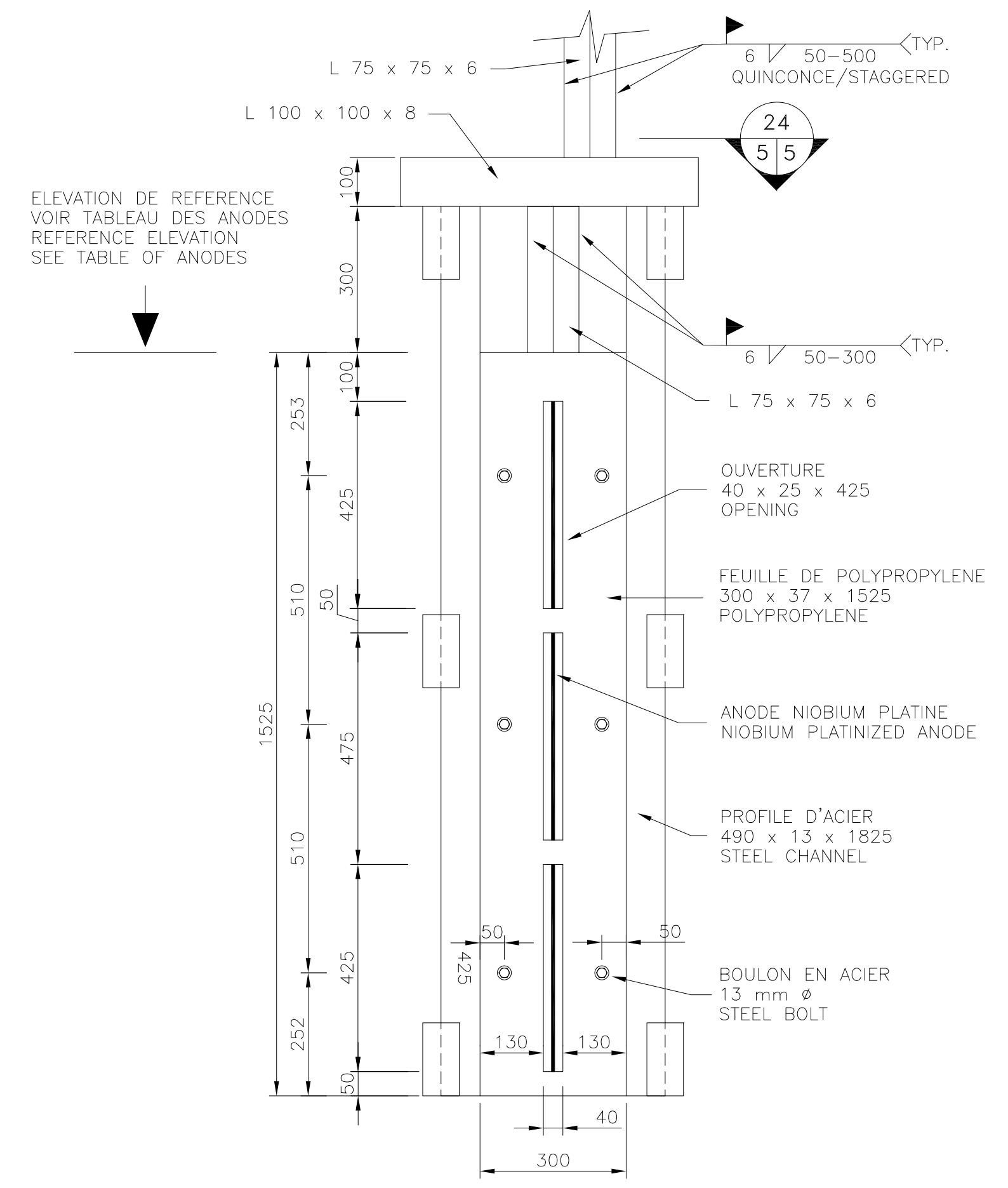
Dessin / Drawing
ELECTRODES DE REFERENCE
MISES A LA TERRE
COUPONS DE CORROSION
REFERENCE ELECTRODES
GROUNDS
CORROSION SAMPLES

Conçu par / Designed by GEORGES CALAVRE ing.	Date / Date 2010/07/14
Dessiné par / Drawn by RENALD BILODEAU T.P.	Date / Date 2010/08/09
Approuvé par / Approved by GEORGES CALAVRE ing.	Date / Date 2010/08/12
Soumission / Tender MOHAMED AU CISSE ing. Gestionnaire de projet de TPSG	Tender / Project Manager PWGSC Project Manager
No de projet / Project no R.035092.001	
No de dessin / Drawing no QU-10055-M	No de feuille / Sheet no PC4/6



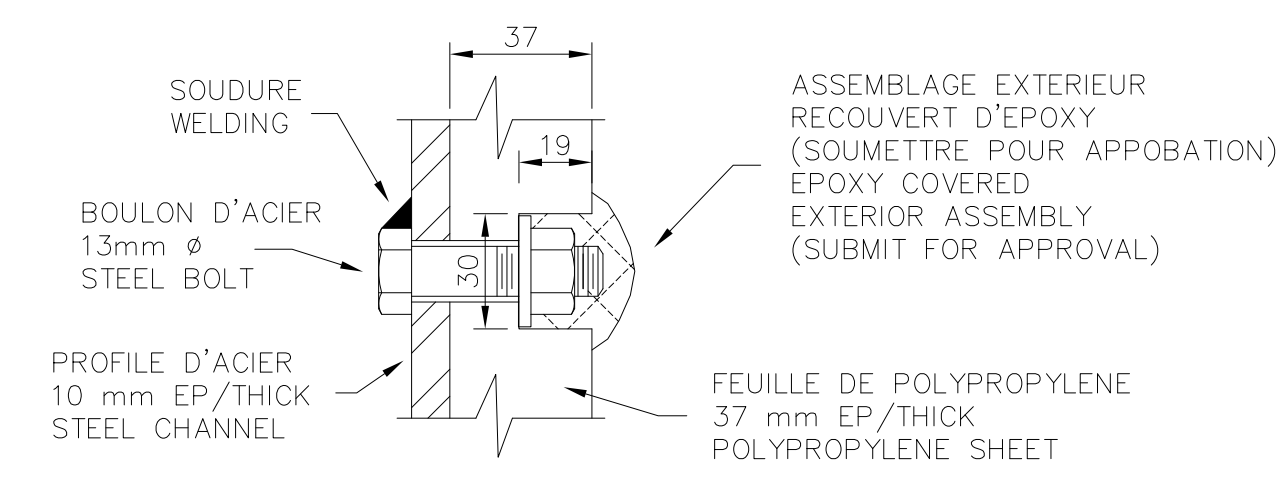
ANODE TYPE I
TYPE I ANODE

0 500 mm 1:10



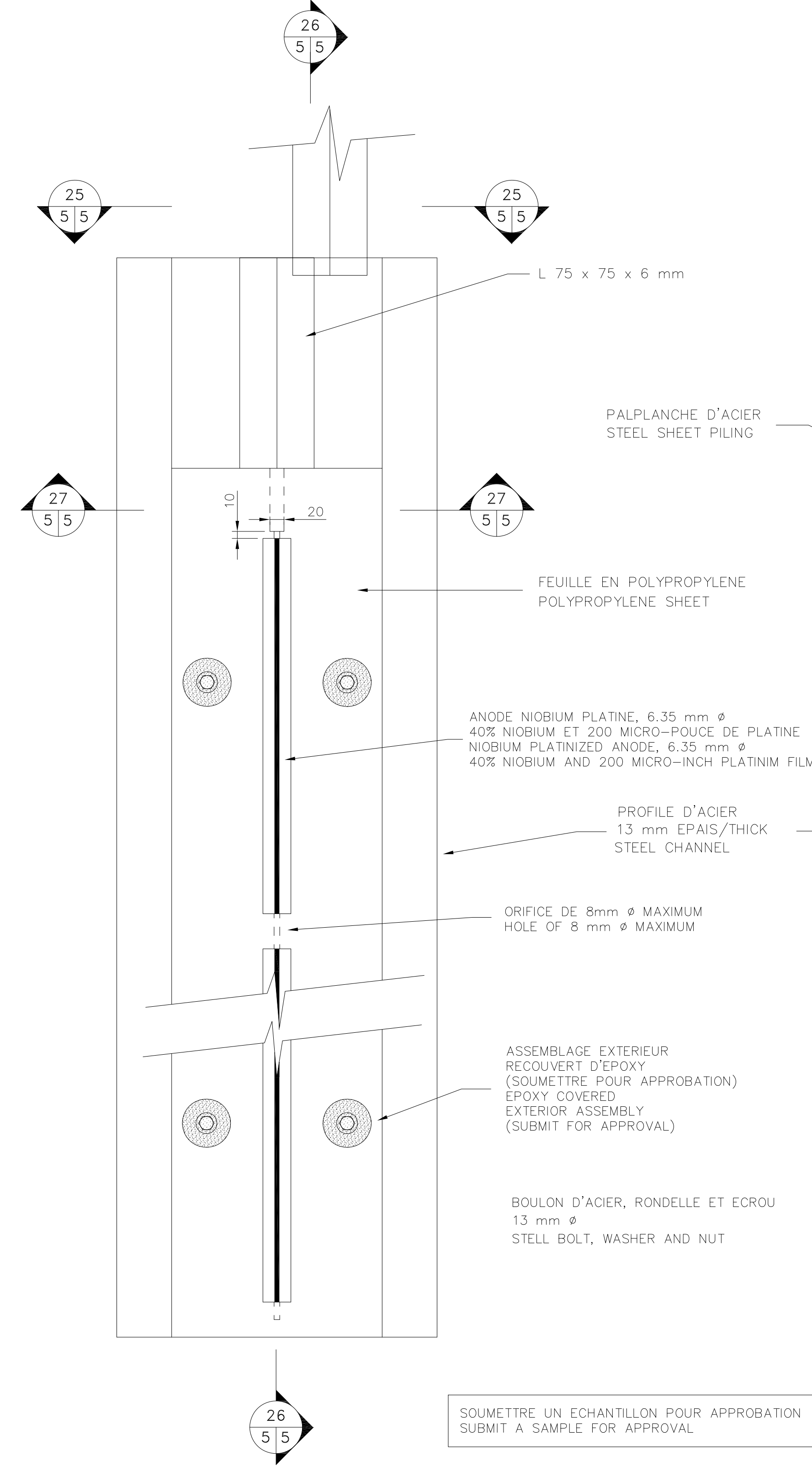
ANODE TYPE II
TYPE II ANODE

0 500 mm 1:10



DETAIL TYPE
TYPICAL DETAIL

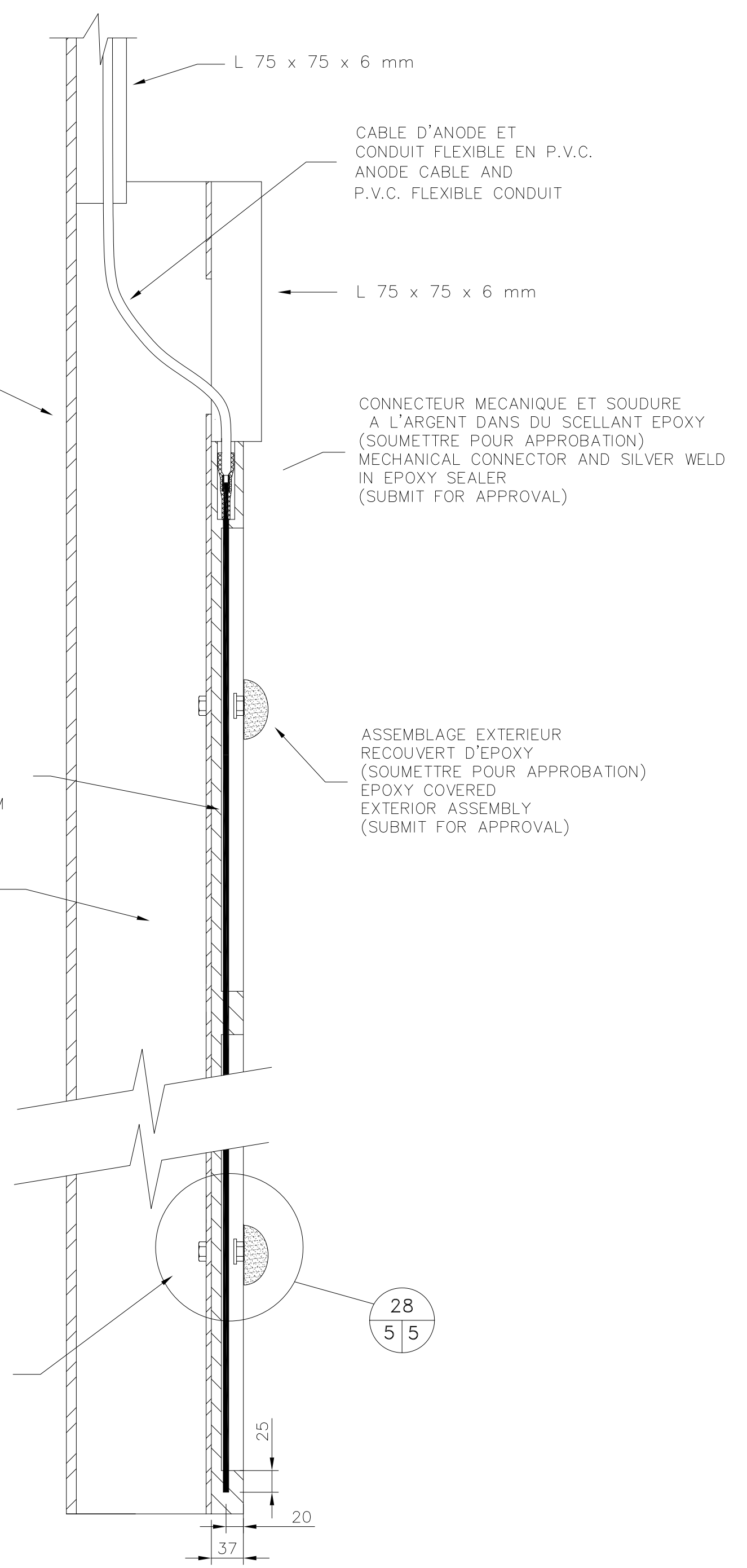
0 100 mm 1:2



ELEVATION
ELEVATION

0 250 mm 1:5

SOUMETTRE UN ECHANTILLON POUR APPROBATION
SUBMIT A SAMPLE FOR APPROVAL

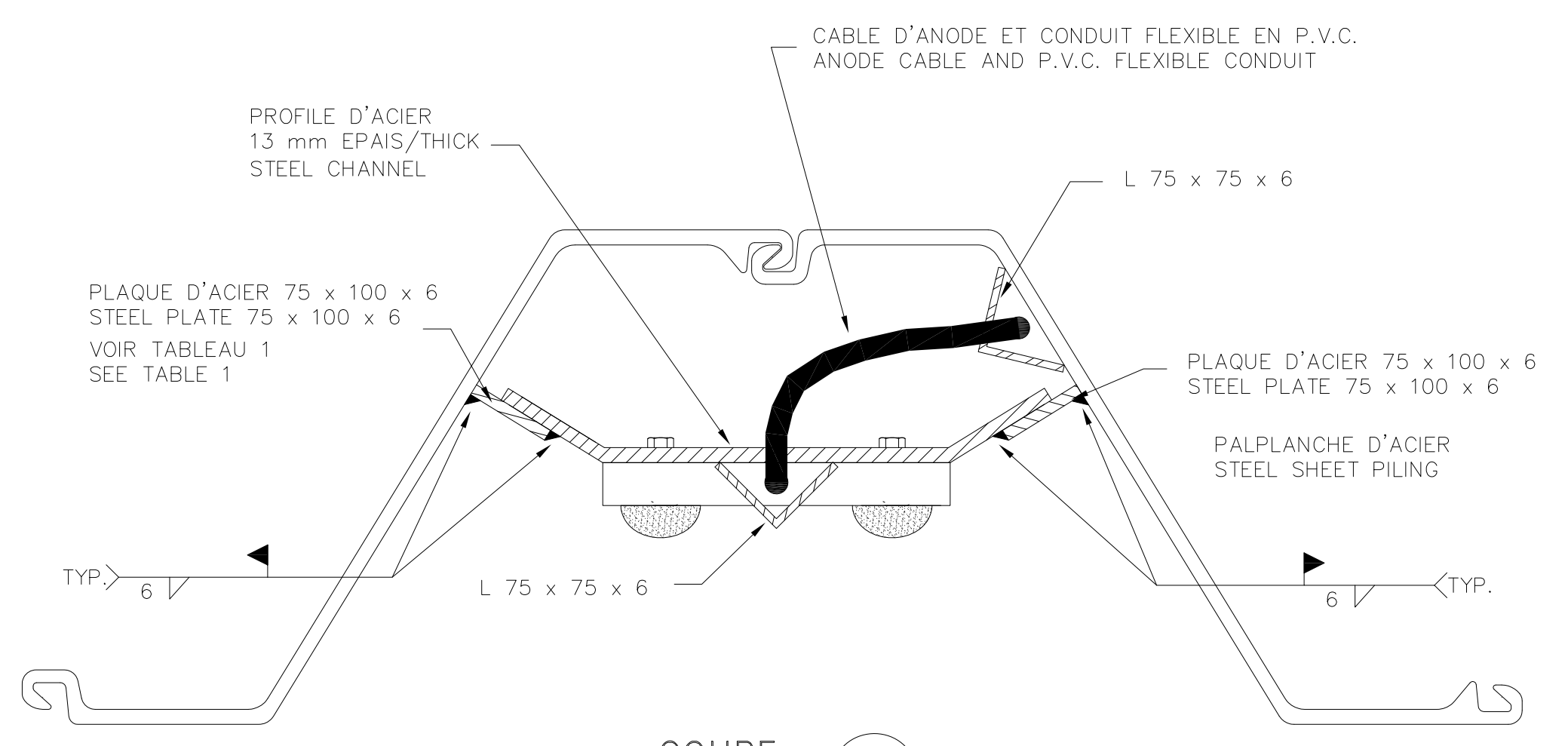


COUPE SECTION

0 250 mm 1:5

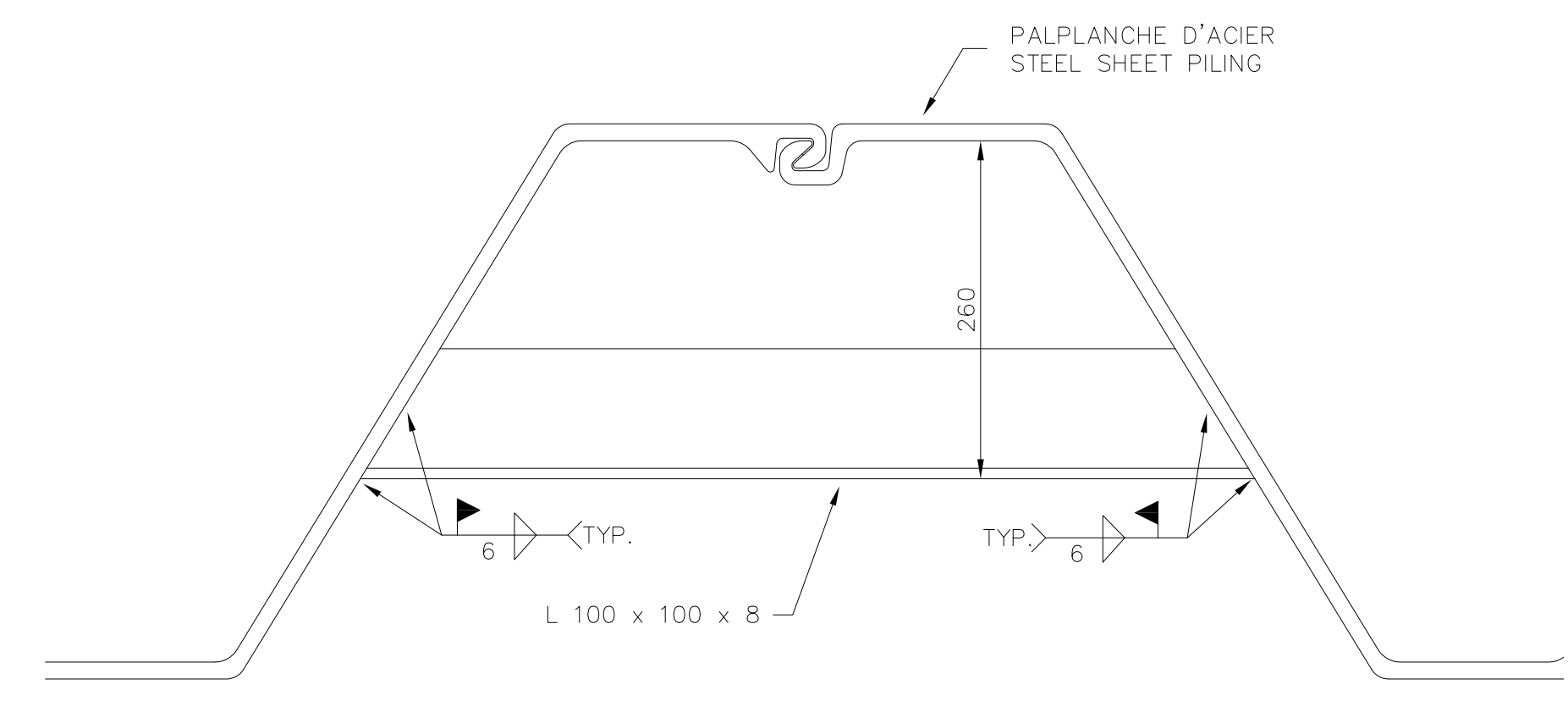
TABLEAU 1/TABLE 1

TYPE D'ANODES / ANODES TYPE	NOMBRE DE PLAQUE D'ACIER PAR COTE / NUMBER OF STEEL PLATE FOR EACH SIDE
I	4
II	3



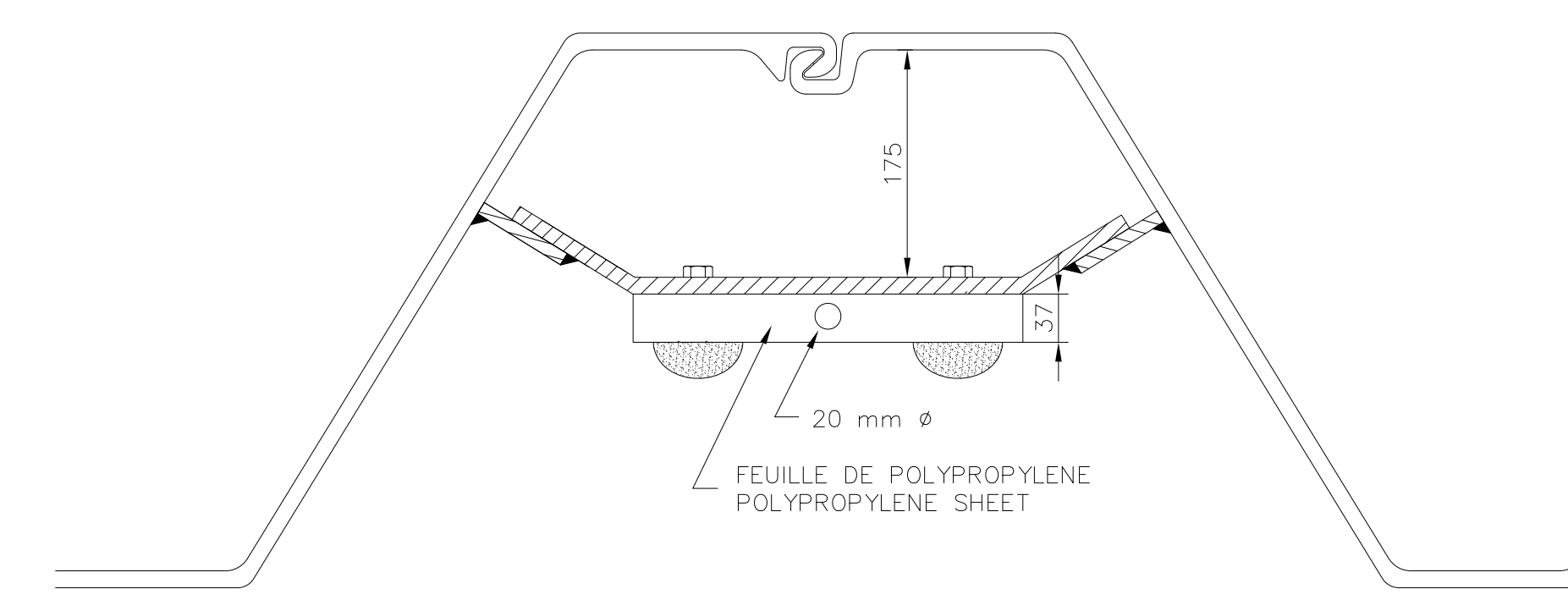
COUPE SECTION

0 250 mm 1:5



COUPE SECTION

0 250 mm 1:5



COUPE SECTION

0 250 mm 1:5

LES MESURES SUR LES PLANS SONT APPROXIMATIVES ET ELLES DOIVENT ETRE VERIFIEES SUR PLACE PAR L'ENTREPRENEUR.

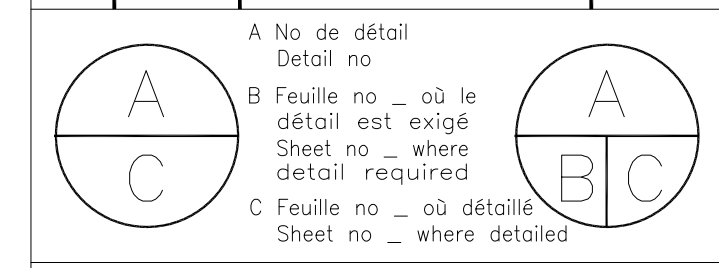
AVANT DE COMMENCER LES TRAVAUX, VERIFIER EN CONSEQUENCE, MESURER AVANT DE COUPER TOUTE PIECE.

THE MEASUREMENTS INDICATED ON THE PLANS ARE APPROXIMATE AND SHOULD BE CHECKED ON SITE BY THE CONTRACTOR.

BEFORE STARTING THE WORKS, CHECK ACCORDINGLY, AND MEASURE ADEQUATELY BEFORE CUTTING ANY COMPONENT.



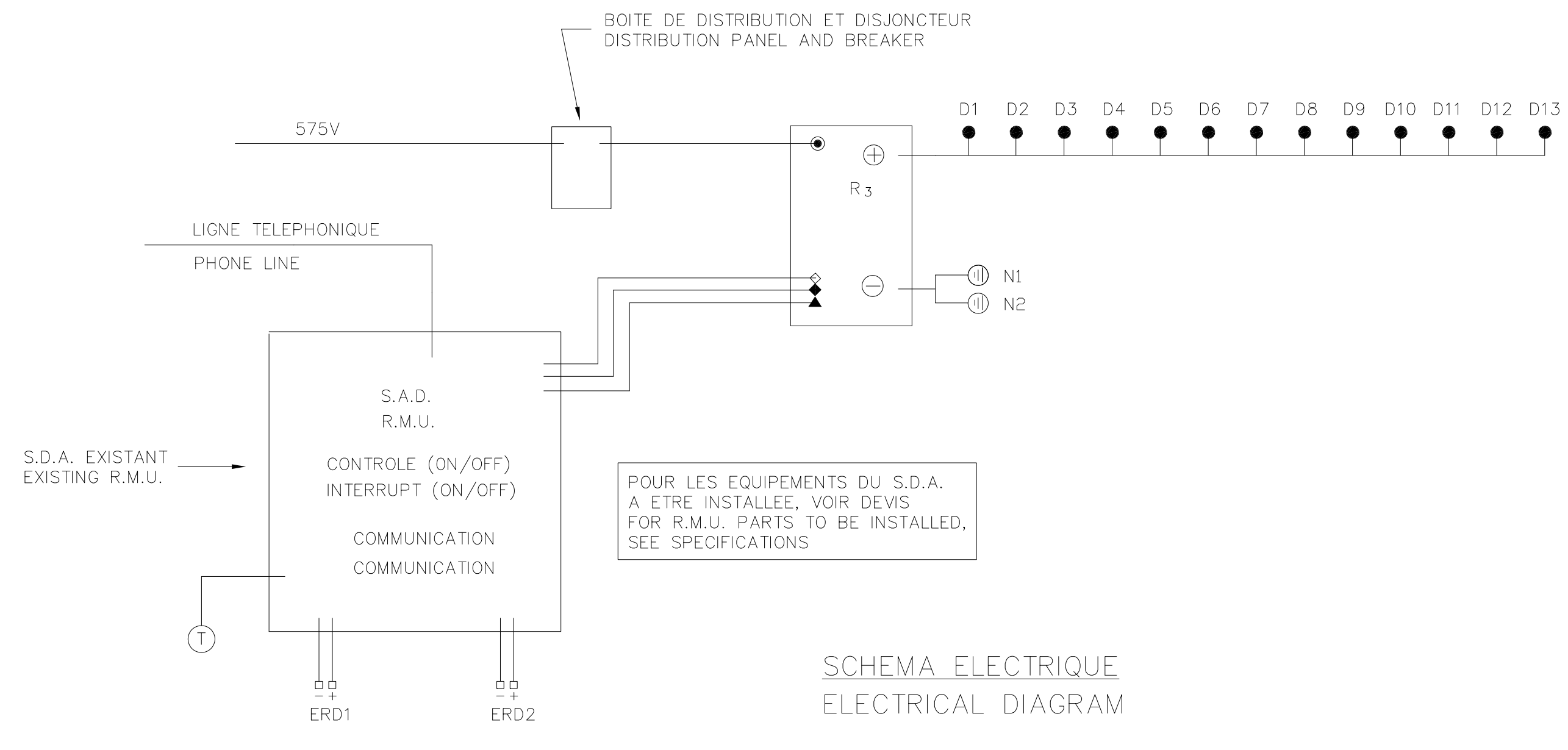
No	Date	Révisions	App.
4	11/05/24	POUR CONSTRUCTION FOR CONSTRUCTION	G.C.
3	11/02/01	PRELIMINAIRES 99% 99% REVIEW SUBMISSION	G.C.
2	10/08/23	PRELIMINAIRES 66% 66% REVIEW SUBMISSION	G.C.
1	10/08/13	PRELIMINAIRES 33% 33% REVIEW SUBMISSION	G.C.



Projet / Project
LA TABATIÈRE
 COMTE MANOUCAGAN COUNTY
 RECONSTRUCTION DU POSTE D'AMARAGE NO.1 BERTH NO. 1
 RECONSTRUCTION

Dessin / Drawing
 DETAILS DE FABRICATION ET D'INSTALLATION DES ANODES
 ANODES MANUFACTURING AND INSTALLATION DETAILS

Conçu par / Designed by GEORGES CALVRE ing.	2010/07/14 Date
Dessiné par / Drawn by RENALD BILODEAU T.P.	2010/08/09 Date
Approuvé par / Approved by GEORGES CALVRE ing.	2010/08/12 Date
Soumission / Tender MOHAMED ALI Cissé ing.	PWGSC Project Manager
No de projet / Project no R.035092.001	



LEGENDE

●	ANODE	ANODE
R ₃	REDRESSEUR	RECTIFIER
ERD1-ERD2	ELECTRODES DE REFERENCE	REFERENCE ELECTRODES
□	ALIMENTATION 110 V. AC	110 V. AC
◇	BORNE VOLTAGE DC	DC VOLTAGE TERMINAL
◆	BORNE COURANT DC	DC CURRENT TERMINAL
▲	CONNEXION INTERRUPTEUR ON/OFF	ON/OFF INTERRUPT
⊖	CONNEXION NEGATIVE	NEGATIVE TERMINAL
⊕	CONNEXION POSITIVE AU REDRESSEUR	POSITIVE TERMINAL AT I
⊖	CONNEXION NEGATIVE AU REDRESSEUR	NEGATIVE TERMINAL AT
●	CONNEXION AC AU REDRESSEUR	AC TERMINAL AT RECTIF
⊙	SONDE DE TEMPERATURE DU REDRESSEUR	RECTIFIER TEMPERATURE
S.A.D. / R.M.U.	SYSTEME D'ACQUISITION DES DONNEES	R.M.U.

NOTE 1: TOUS LES ANODES, ELECTRODES DE REFERENCE ET COUPONS DE CORROSION SERONT INSTALLEES DANS LA PARTIE CONCAVE DES PALPLANCHES
 NOTE 1: ALL THE ANODES, REFERENCE ELECTRODES AND CORROSION SAMPLES WILL BE INSTALLED IN THE CONCAVE SECTION OF THE SHEET PILING
 NOTE 2: TOUTES LES CABLES D'ANODES SONT A DOUBLE ISOLATION DE TYPE HALAR / HMWPE
 NOTE 2: ALL ANODES CABLES ARE DOUBLE INSULATION AND HALAR / HMWPE TYPE
 NOTE 3: LES DETAILS POUR LES EQUIPEMENTS ELECTRIQUES SONT INCLUS AU DEVIS
 NOTE 3: THE DETAILS FOR ELECTRICAL EQUIPMENTS ARE INCLUDED IN THE SPECIFICATIONS

COUPONS DE CORROSION / CORROSION SAMPLES

IDENTIFICATION	CHAINAGE (m)	ELEVATION (m)
OCD1	0+083.4±	1.00
OCD2	0+083.4±	NOTE
OCD3	0+039.6±	1.00
OCD4	0+039.6±	NOTE

NOTE: LES COUPONS DE CORROSIONS OCD2 ET CCE2 SERONT INSTALLEES PRES DU FOND MARIN
 NOTE: THE CORROSION SAMPLES OCD2 AND CCE2 WILL BE INSTALLED NEAR THE SEA BOTTOM

ANODES / ANODES

IDENTIFICATION	TYPE	LONGUEUR (mm)	CHAINAGE (m)	ELEVATION (m)
D1	I	2440	0+092.1±	2.00
D2	I	2440	0+085.8±	2.00
D3	I	2440	0+079.6±	2.00
D4	I	2440	0+073.3±	2.00
D5	I	2440	0+067.0±	2.00
D6	I	2440	0+060.8±	2.00
D7	I	2440	0+054.5±	2.00
D8	I	2440	0+048.3±	2.00
D9	I	2440	0+042.0±	2.00
D10	II	1525	0+035.8±	2.00
D11	I	2440	0+029.5±	2.00
D12	I	2440	0+023.3±	2.00
D13	II	1525	0+020.3±	1.30

ELECTRODES DE REFERENCE / REFERENCE ELECTRODES

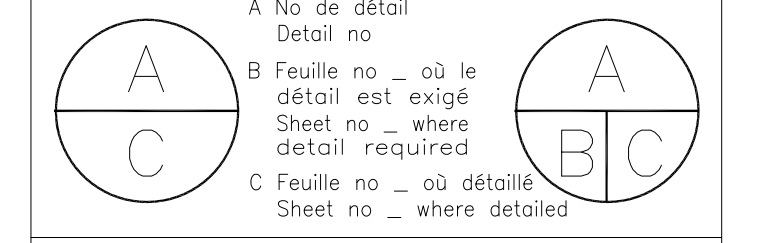
IDENTIFICATION	CHAINAGE (m)	ELEVATION (m)
ERD1	0+089.6±	NOTE
ERD2	0+033.3±	NOTE

NOTE: LES ELECTRODES DE REFERENCE SERONT INSTALLEES PRES DU FOND MARIN
 NOTE: THE REFERENCE ELECTRODES WILL BE INSTALLED NEAR THE SEA BOTTOM

LES MESURES SUR LES PLANS SONT APPROXIMATIVES ET ELLES DOIVENT ETRE VERIFIEES SUR PLACE PAR L'ENTREPRENEUR.
 AVANT DE COMMENCER LES TRAVAUX, VERIFIER EN CONSEQUENCE, MESURER AVANT DE COUPER TOUTE PIECE.
 THE MEASUREMENTS INDICATED ON THE PLANS ARE APPROXIMATE AND SHOULD BE CHECKED ON SITE BY THE CONTRACTOR.
 BEFORE STARTING THE WORKS, CHECK ACCORDINGLY, AND MEASURE ADEQUATELY BEFORE CUTTING ANY COMPONENT.



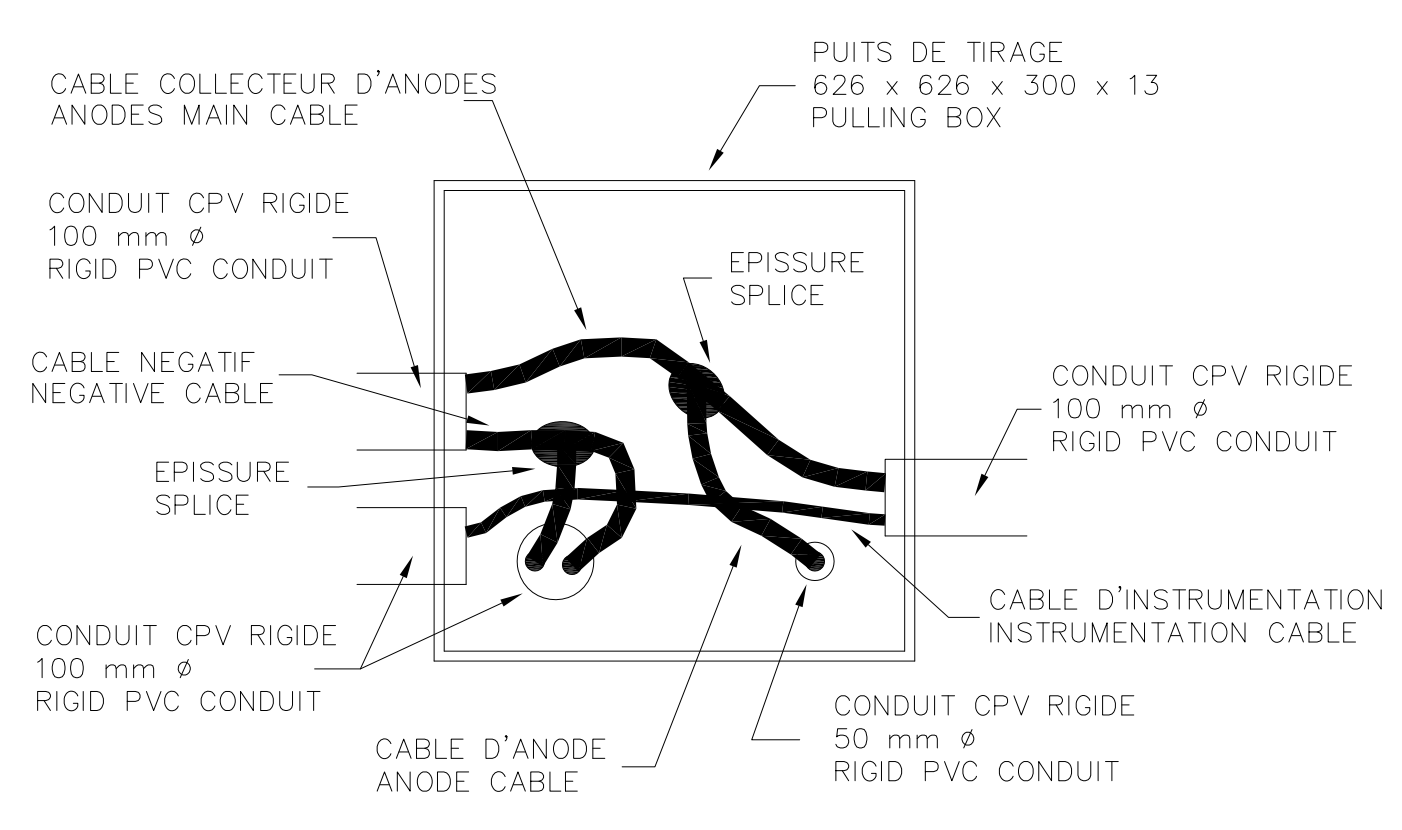
No	Date	Révisions	App.
4	11/05/24	POUR CONSTRUCTION FOR CONSTRUCTION	G.C.
3	11/02/01	PRELIMINAIRES 99% 99% REVIEW SUBMISSION	G.C.
2	10/07/16	PRELIMINAIRES 66% 66% REVIEW SUBMISSION	G.C.
1	10/08/13	PRELIMINAIRES 33% 33% REVIEW SUBMISSION	G.C.



Projet: **LA TABATIÈRE**
 COMTE MANOUCAGAN COUNTY
RECONSTRUCTION DU POSTE D'AMARAGE NO. 1 BERTH NO. 1 RECONSTRUCTION

Dessin: **SCHEMA ELECTRIQUE TABLEAUX**
 ELECTRICAL DIAGRAM TABLES

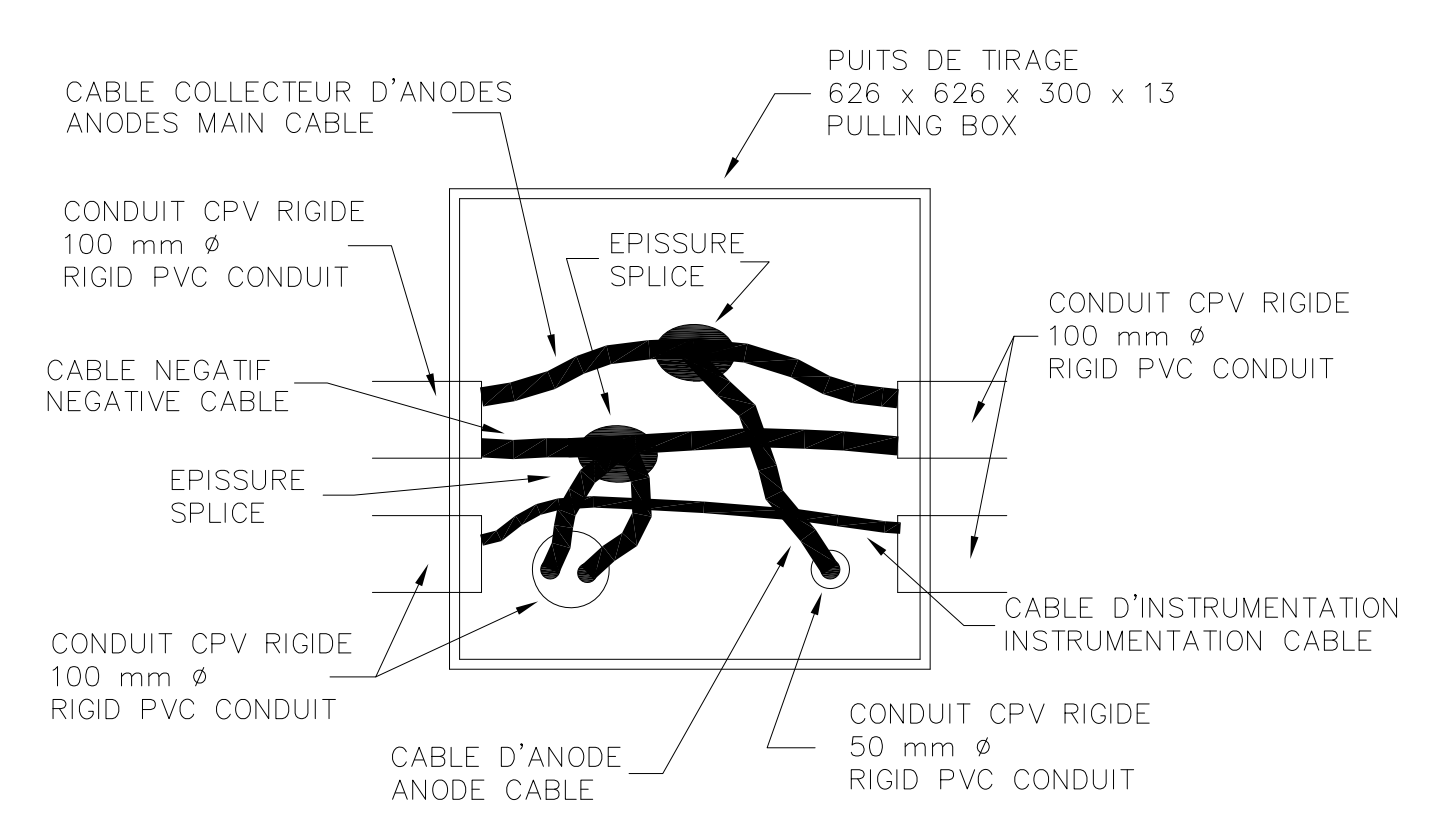
Conçu par GEORGES CALAVRE ing.	Designed by 2010/07/14 Date
Dessiné par RENALD BILLODEAU T.P.	Drawn by 2010/08/09 Date
Approuvé par GEORGES CALAVRE ing.	Approved by 2010/08/12 Date
Soumission MOHAMED ALI Cisse ing.	Tender PWSC Project Manager
No de projet R.035092.001	
No de dessin QU-10055-M	No de feuille PC6/6



PUITS DE TIRAGE NO. 8 / PULLING BOX NO. 8



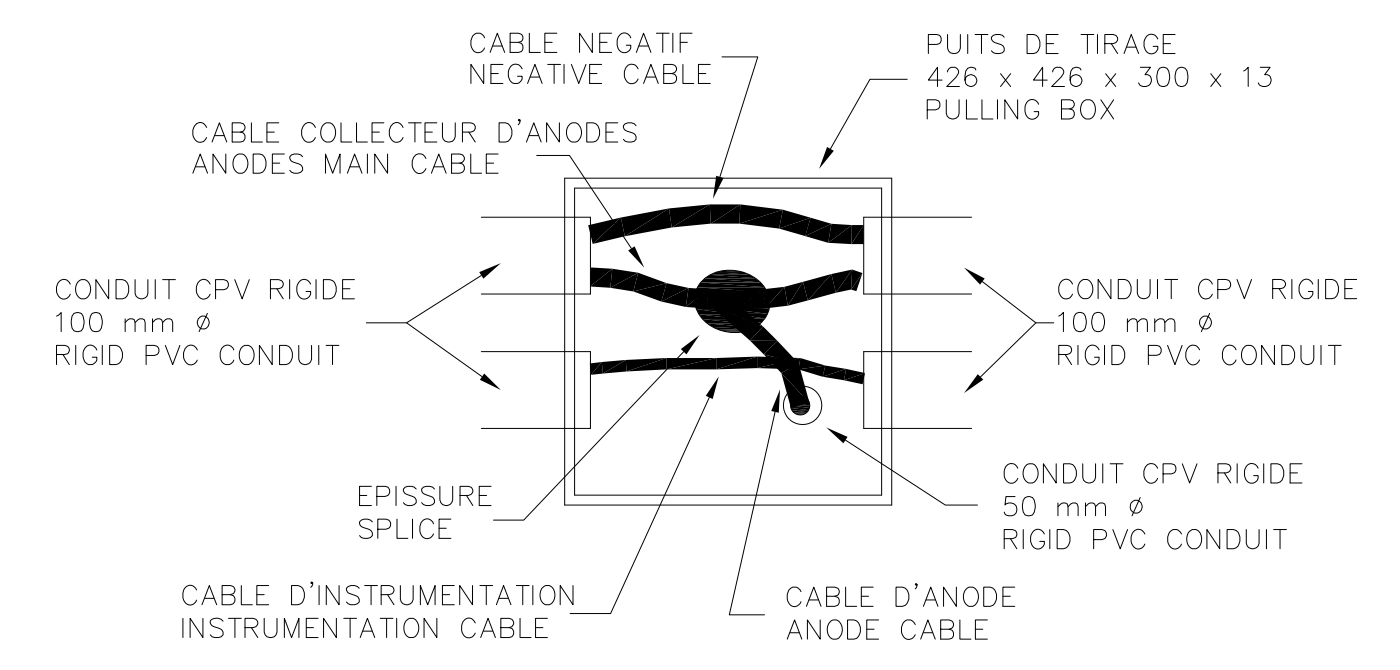
21 / 26



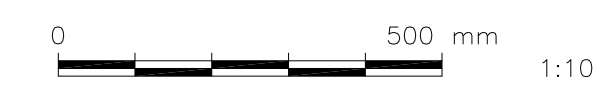
PUITS DE TIRAGE NO. 15 / PULLING BOX NO. 15



19 / 26



PUITS DE TIRAGE DE 426 x 426 mm TYPE / 426 x 426mm TYPICAL PULLING BOX



20 / 26