

**RETURN BIDS TO:**  
**RETOURNER LES SOUMISSIONS À:**  
Bid Receiving Public Works and Government  
Services Canada/Réception des soumissions Travaux  
publics et Services gouvernementaux Canada  
800 Burrard Street, 2nd floor  
800, rue Burrard, 2e étage  
Vancouver  
British Columbia  
V6Z 0B9  
Bid Fax: (604) 775-9381

## SOLICITATION AMENDMENT MODIFICATION DE L'INVITATION

The referenced document is hereby revised; unless otherwise indicated, all other terms and conditions of the Solicitation remain the same.

Ce document est par la présente révisé; sauf indication contraire, les modalités de l'invitation demeurent les mêmes.

### Comments - Commentaires

Vendor/Firm Name and Address  
Raison sociale et adresse du  
fournisseur/de l'entrepreneur

**Issuing Office - Bureau de distribution**  
Public Works and Government Services Canada -  
Pacific Region  
800 Burrard Street, 12th floor  
800, rue Burrard, 12e étage  
Vancouver  
British C  
V6Z 0B9

<b>Title - Sujet</b> Elec., Communication & Elec. Safety	
<b>Solicitation No. - N° de l'invitation</b> 21C82-120400/A	<b>Amendment No. - N° modif.</b> 002
<b>Client Reference No. - N° de référence du client</b> 21C82-120400	<b>Date</b> 2013-07-25
<b>GETS Reference No. - N° de référence de SEAG</b> PW-\$PWY-020-7035	
<b>File No. - N° de dossier</b> PWY-3-36036 (020)	<b>CCC No./N° CCC - FMS No./N° VME</b>
<b>Solicitation Closes - L'invitation prend fin</b> <b>at - à 02:00 PM</b> <b>on - le 2013-07-31</b>	<b>Time Zone</b> Fuseau horaire Pacific Daylight Saving Time PDT
<b>F.O.B. - F.A.B.</b> <b>Plant-Usine:</b> <input type="checkbox"/> <b>Destination:</b> <input checked="" type="checkbox"/> <b>Other-Autre:</b> <input type="checkbox"/>	
<b>Address Enquiries to: - Adresser toutes questions à:</b> Ly, Ronny(PWY)	<b>Buyer Id - Id de l'acheteur</b> pwy020
<b>Telephone No. - N° de téléphone</b> (604) 666-0043 ( )	<b>FAX No. - N° de FAX</b> (604) 775-6633
<b>Destination - of Goods, Services, and Construction:</b> <b>Destination - des biens, services et construction:</b> CSC - Fraser Valley Institution - Abbotsford, BC	

Instructions: See Herein

Instructions: Voir aux présentes

<b>Delivery Required - Livraison exigée</b>	<b>Delivery Offered - Livraison proposée</b>
<b>Vendor/Firm Name and Address</b> <b>Raison sociale et adresse du fournisseur/de l'entrepreneur</b>	
<b>Telephone No. - N° de téléphone</b> <b>Facsimile No. - N° de télécopieur</b>	
<b>Name and title of person authorized to sign on behalf of Vendor/Firm</b> <b>(type or print)</b> <b>Nom et titre de la personne autorisée à signer au nom du fournisseur/</b> <b>de l'entrepreneur (taper ou écrire en caractères d'imprimerie)</b>	
<b>Signature</b>	<b>Date</b>

Solicitation No. - N° de l'invitation

21C82-120400/A

Amd. No. - N° de la modif.

002

Buyer ID - Id de l'acheteur

pw020

Client Ref. No. - N° de réf. du client

21C82-120400

File No. - N° du dossier

PWY-3-36036

CCC No./N° CCC - FMS No/ N° VME

---

This Amendment 002 (Addendum No. 2) is raised to provide clarifications to the specifications and drawings and to answer questions from bidders. Please note the Electrical Addendum No. 1 was included in the original Specification package.

**All other terms and conditions remain unchanged.**

---

## 1 GENERAL

This Addendum forms part of the Contract Documents and amends the original Electrical Drawings and Specifications. The following revisions supersede the information contained in the original Drawings and Specifications issued to the extent referenced and shall become part thereof. No adjustment to the Contract Price will be considered or allowed due to the Contractor or to any sub-contractor or supplier not being familiar with this Addendum.

## 2 SPECIFICATIONS

### 2.1 SPECIFICATION 26 05 21 – WIRES AND CABLES (0-1000V)

- .1 **Add:** Item 3.3.1.3 to read, "Connections between 15 A, 120 V single or duplex receptacles within a common length of straight wall of stud and drywall construction in one and the same room."

### 2.2 SPECIFICATION 26 05 36 – CABLE TRAYS FOR ELECTRICAL SYSTEMS

- .1 **Revise:** Item 2.1.1 to read, "Totally enclosed solid cable tray: CSA Class C, 75 mm deep width as noted on drawings, constructed of hot-dipped galvanized steel to form a cable supporting surface. Cable tray construction shall utilize tuned down outer edges so as to form a smooth finish and provide additional lateral rigidity. The cable support surface shall be smooth and flat."
- .2 **Revise:** Item 2.1.5 to read, "Conduit bushings for wiring to and from cable trays: T&B insulated-throat bushings or approved equal."

### 2.3 SPECIFICATION 26 22 53 – STATIS UNINTERRUPTABLE POWER SUPPLY

- .1 **Revise:** Item 2.4.1 to read, "Eaton 9PX or approved equal."

### 2.4 SPECIFICATION 27 11 19 – STRUCTURED CABLING COMMUNICATIONS SYSTEMS

- .1 **Revise:** Item 2.1.3.3 to read, "Provide one spare 12 fiber, single mode, OS2 single mode advanced, outside plant cable from Building A CER via the Building A Penthouse IT Room to the Twenty Bed Living Unit Comm. Room 136 for future. Cable shall be tested and terminated into a lockable cabinet at both ends. Provide enough slack in the cable to reach the farthest point in the room. Coordinate termination location with the Departmental Representative on site."

### 2.5 SPECIFICATION 27 51 23 – INTERCOMMUNICATIONS AND PROGRAM SYSTEMS

- .1 **Add:** Item 1.3.1.1.6 to read, "Press door release button; hold to activate, release to deactivate. Open door while release button is activated."

---

## 2.6 APPENDIX A – LIGHTING FIXTURE SCHEDULE

- .1 **Revise:** Type 'T' Acceptable Product or Approved Equal to read, "Premier Lighting BP52751".
- .2 **Add:** Type 'A' 'Options' to read, "Integral on/off switch, 610 mm cord c/w 5-15R male cord end."
- .3 **Revise:** Type 'A', 'B', 'H', 'K' and 'S' 'Ballast' description to read, "Program Rapid Start".
- .4 **Revise:** Type 'C', 'D' and 'X' 'Ballast' description to read, "Program Start Electronic".
- .5 **Revise:** Type 'J' 'Lamp Loading' description to read, "20W, blue LEDs with remote phosphor lens, 4000K, 1000 Lumens"
- .6 **Revise:** Type 'J' 'Dimmer' description to read, "Lutron Model No.: ZP600FAM120W".

## 2.7 APPENDIX B – MECHANICAL EQUIPMENT SCHEDULE

- .1 **Revise:** 'FFH-1' voltage, protection and feeder to read, "208", "20A, 2P" and "21mmC, 3C #12 + G" respectively.
- .2 **Revise:** 'HRV-1' and 'HRV-2' protection to read, "20A".
- .3 **Add:** "Note No. 4" to 'HRV-1' and 'HRV-2'. Each piece of equipment is equipped with two motors. The Electrical Contractor is to provide a single power connection.
- .4 **Add:** "Note No. 5" to 'AHU-1' and 'AHU-2'. Note No. 5 to read, "Provide a dedicated 120V, 15A, 1P to the air handling unit fed from Panel C. Coordinate power connection with the Mechanical Contractor on site."
- .5 **Add:** "Note No. 6" to 'B-1' and 'B-2'. Note No. 6 to read, "Provide a remote line voltage boiler kill switch located in Mechanical Room 150. Coordinate location of switch with the Mechanical Contractor on site."
- .6 **Add:** One motorized damper power connection in Multipurpose Room 147. Dedicated 120 V, 15 A, single pole circuit to be fed from Panel C. Coordinate power connection with the Mechanical Contractor on site. Control power to individual dampers by others.
- .7 **Add:** One motorized damper power connection in the Attic. Dedicated 120 V, 15 A, single pole circuit to be fed from Panel C. Coordinate power connection with the Mechanical Contractor on site. Control power to individual dampers by others.

## 2.8 APPENDIX C – PANEL SCHEDULES

- .1 **Revise:** Panel C, 'Panel Type' to read, "96 Circuit".

---

### **3 DRAWINGS**

#### **3.1 DRAWING E002**

- .1 **Revise:** Elevator overcurrent protection (circuit breaker) to read '20 A, 3P'.
- .2 **Revise:** Panel 'C' overcurrent protection and feeder schedule to read, "150A, 3P" and "41mmC-4#1/0 AWG + G" respectively.

#### **3.2 DRAWING E003**

- .1 **Revise:** Detail 'D' service cable description to read, "4 F, MM, 50/125, OM3, OSP fiber cable to Building A CER via Building A Penthouse IT Room."

#### **3.3 DRAWING E200**

- .1 **Revise:** Light fixtures in Stair A1 and B1 shall be Type 'K'.

#### **3.4 DRAWING E201**

- .1 **Revise:** Light fixtures in Stair A2 and B2 shall be Type 'K'.

#### **3.5 DRAWING E300**

- .1 **Revise:** Refer to ESK-E300-01 for the revised receptacle layout in Visit Room 145, Multipurpose 146 and Multipurpose 147. Coordinate multimedia connection requirements in the rooms listed with the Departmental Representative.
- .2 **Revise:** Refer to ESK-E300-01 for the revised x-ray equipment connection requirements.
- .3 **Revise:** 'FFH-1' circuit number to read, "C-64, 66". Panel C, Circuit 42 space shall be equipped with a 15 A, single pole circuit breaker noted as spare. Updated panel schedule accordingly.

#### **3.6 DRAWING E301**

- .1 **Add:** Coordinate Multipurpose 233 multimedia connection requirements with the Departmental Representative. See ESK-E301-01.

#### **3.7 DRAWING E400**

- .1 **Delete:** Inmate telephone in Corridor 148. See ESK-E400-01.
- .2 **Delete:** Computer workstation structured cabling outlets in Corridor 148. See ESK-E400-01.
- .3 **Revise:** Refer to ESK-E400-01 for the revised structured cabling drop count in Visit Room 145.

- .4 **Add:** Coordinate mounting and location of intercom station with the Departmental Representative. See ESK-E400-01.

### 3.8 DRAWING E500

- .1 **Revise:** Detail 'D' description to read, "Structured Cabling Security Box".
- .2 **Revise:** Detail 'E', Note 3 to read, "Provide security box for each structured cabling outlet in Rooms 133, 142, 145, 146, 147 and 233."

## 4 ALTERNATE SUBMITTALS

- .1 **Alternate:** Type 'G'; Philips Hadco, RSC2 Series. **Response:** Alternate is approved if the glass lens can be supplied as clear or frosted white. Amber colored glass is not acceptable.
- .2 **Alternate:** Type 'A'; Legion Lighting, Mini My-T-Lite Series. **Response:** Alternate is approved only if equipped with the integral on/off switch, 610 mm cord c/w 5-15R male cord end.
- .3 **Alternate:** Type 'B', Cooper Lighting, Fail-Safe FMR12 Series. **Response:** Approved.
- .4 **Alternate:** Type 'C', The Kirlin Company, VRR-10008 Series. **Response:** Not approved; non-conforming housing construction, dimensions and lens type.
- .5 **Alternate:** Type 'D', Cooper Lighting, Portfolio C8242 Series. **Response:** Not approved; non-conforming efficiency.
- .6 **Alternate:** Type 'F', Cooper Lighting, McGraw Edison IST Series. **Response:** Not approved; non-conforming housing construction.
- .7 **Alternate:** Type 'G', The Kirlin Company, VNT-03038. **Response:** Approved.
- .8 **Alternate:** Type 'H', Cooper Lighting, Metalux 2GR5 Series. **Response:** Approved.
- .9 **Alternate:** Type 'J', Cooper Lighting, Portfolio LD409 Series. **Response:** Approved.
- .10 **Alternate:** Type 'P', Cooper Lighting, Lumark RV Ridgeview Series. **Response:** Approved.
- .11 **Alternate:** Type 'S', Cooper Lighting, Metalux VT3 Series. **Response:** Approved.
- .12 **Alternate:** Type 'T', Cooper Lighting, Lumark VS Series. **Response:** Approved.
- .13 **Alternate:** Type 'A', Kenall, Stratalume, UC Series. **Response:** Not approved; non-conforming dimensions.
- .14 **Alternate:** Type 'B', Kenall, Mighty Mac, RCA Series. **Response:** Approved.

- 
- .15 **Alternate:** Type 'C', Rebelle Architectural Lighting, Sightlines 8000 Series. **Response:** Not approved; non-conforming housing construction.
- .16 **Alternate:** Type 'D', Gotham, AF Series. **Response:** Not approved; non-conforming efficiency.
- .17 **Alternate:** Type 'F', Lithonia Lighting, ASW1 LED Series. **Response:** Not approved; non-conforming housing construction.
- .18 **Alternate:** Type 'G', We-ef. **Response:** Approved.
- .19 **Alternate:** Type 'H', Lithonia Lighting, SP5 Series. **Response:** Approved.
- .20 **Alternate:** Type 'J', Spectrum Lighting, Infinium LED Series. **Response:** Approved.
- .21 **Alternate:** Type 'K', Mighty Mac SDA Series. **Response:** Approved.
- .22 **Alternate:** Type 'P', Lithonia Lighting, D-Series Size 1. **Response:** Not approved; specified lumen levels have been exceeded.
- .23 **Alternate:** Type 'S', Lithonia Lighting, FEM Series. **Response:** Approved.
- .24 **Alternate:** Type 'X', AZZ R-A-L Rig-A-Lite, VP Fluor/HID Series. **Response:** Approved.
- .25 **Alternate:** 'Emergency Lighting', Thomas & Betts, RGS Series. **Response:** Approved.
- .26 **Alternate:** 'Exit Signs', Thomas & Betts, LN Series. **Response:** Approved.

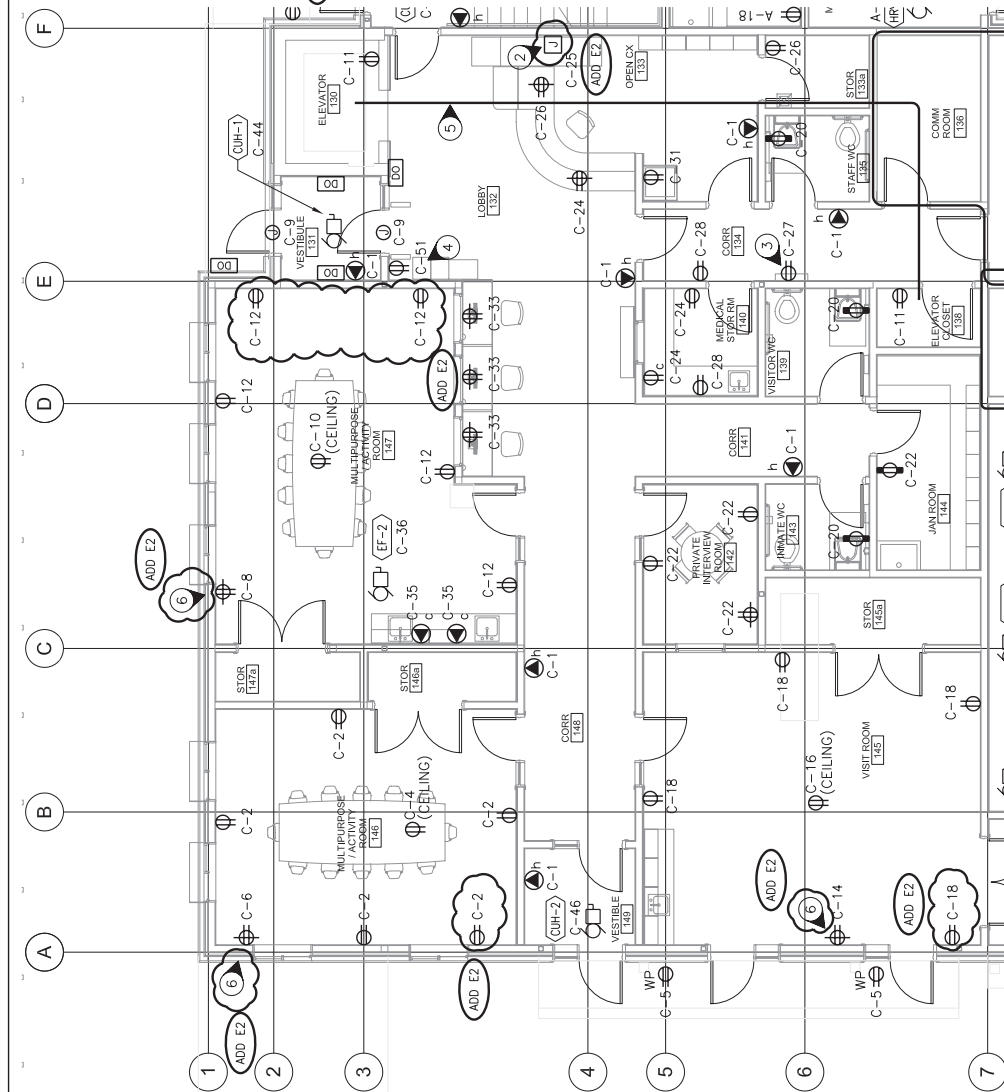
## 5 QUESTIONS & ANSWERS

- .1 **Question:** Where exactly are we supposed to cut off the areas that are considered "inmate areas"? **Answer:** For the purposes of security fasteners TORX screws are only required in the 'Living Units' and 'Exit Stairs'.
- .2 **Question:** I can see with fixtures which are considered vandal areas, but do we need tamper screws on device plates in admin area as well? **Answer:** TORX screws are not required in the Administration Area.
- .3 **Question:** There is also mention of tamper resistant receptacles. Same thing, only in "inmate accessible areas" or just throughout, with exception to kitchen receptacles as noted in specs? **Answer:** Tamper resistant receptacles are required within the Living Unit as noted in Specification 26 27 26, Item 2.2.3.
- .4 **Question:** I don't see a panel schedule with the tender package. Would be helpful for pricing and cross-reference of circuits. **Answer:** Refer to Electrical Specification Appendix C for panel schedules.

- 
- .5     **Question:** Drops for receptacles in walls – can they be BX or does the job consist of vertical and horizontal EMT drops for everything? **Answer:** Drops to receptacles with accessible ceilings is permitted to be done with armoured cable.
- .6     **Question:** Are to carry the cost of LAN security boxes for all data outlets in admin areas? **Answer:** Structured Cabling Security Boxes are required in Rooms 133, 142, 145, 146, 147 and 233.
- .7     **Question:** I do not see any counts for Type K lights but it is in the lighting schedule. Just an oversight or “cut and paste” spec from prior job? **Answer:** Type ‘S’ fixture in exit stairs to be converted to Type ‘K’.
- .8     **Question:** If the power and communication conduit and pull boxes are by other. Is the Electrical Contractor responsible for the grounding of the pull boxes? **Answer:** Grounding is the responsibility of the Electrical Contractor.
- .9     **Question:** Please clarify if BX cable is acceptable in walls for receptacles, switches, lighting, fire alarm, EM, etc.? **Answer:** Installation of BX cable in conduit is not permitted.
- .10    **Question:** Please confirm that the spare cables are to be provided as shown in the specification (Specification 27 11 19, Items 2.1.2.3 and 2.1.3.3) as these cables are not shown on the drawings. **Answer:** Specified cables are required.
- .11    **Question:** Is there to be a Specification for the Intercom System? **Answer:** Specification 27 51 23 was included in Electrical Addendum 1.
- .12    Question: Please clarify who is responsible for the underground power and communication conduits and manholes (pull boxes). Answer: Civil Contractor
- .13    Question: Please clarify who is responsible for the trenching, back filling, conduit, lamp standard concrete bases for the parking lot lighting. Answer: Civil Contractor

END OF ADDENDUM 2





GENERAL NOTES :

1. REFER TO ARCHITECTURAL DRAWINGS FOR CELL OUTLET LOCATIONS AND ELEVATIONS.
2. REFER TO MECHANICAL DRAWINGS FOR ACTUAL LOCATIONS OF MECHANICAL EQUIPMENTS REQUIRING POWER CONNECTION.

KEY NOTES :

- ① RANGE HOOD: REFER TO ARCHITECTURAL ELEVATION DRAWINGS AND COORDINATE WORK WITH MECHANICAL CONTRACTOR ON SITE.
- ② PROVIDE POWER ROUGH-IN PROVISIONS (CIS-2171-VSS-1 BACK BOX COMPLETE WITH A DOUBLE GANG MUD RING AND COVER PLATE) FOR A FUTURE X-RAY EQUIPMENT CONNECTION. MOUNT BOX AT 400mm AFL.
- ③ SECURED KEY STORAGE CABINET RECEPTACLE, COORDINATE FINAL CONNECTION REQUIREMENTS WITH EQUIPMENT MANUFACTURER (SUPPLIED BY OTHERS). REFER TO ARCHITECTURAL DRAWINGS FOR EQUIPMENT ELEVATION.
- ④ METAL DETECTOR RECEPTACLE; COORDINATE CONNECTION REQUIREMENTS WITH EQUIPMENT MANUFACTURER (SUPPLIED BY OTHERS).
- ⑤ 2x103mm DUCTS FOR ELEVATOR POWER AND CONTROL. 1x27mm DUCT FOR ELEVATOR CAB LIGHTING COMPLETE WITH A LOCAL FUSED DISCONNECT SWITCH CONNECTED TO A DEDICATED 15A, 120V CIRCUIT (CIRCUIT C-59). COORDINATE REQUIREMENTS AND INSTALLATION WITH ELEVATOR CONTRACTOR ON SITE.
- ⑥ MULTIMEDIA EQUIPMENT CONNECTION REQUIREMENTS TO BE REVIEWED WITH DEPARTMENTAL REPRESENTATIVE ON SITE PRIOR TO ROUGH-IN.

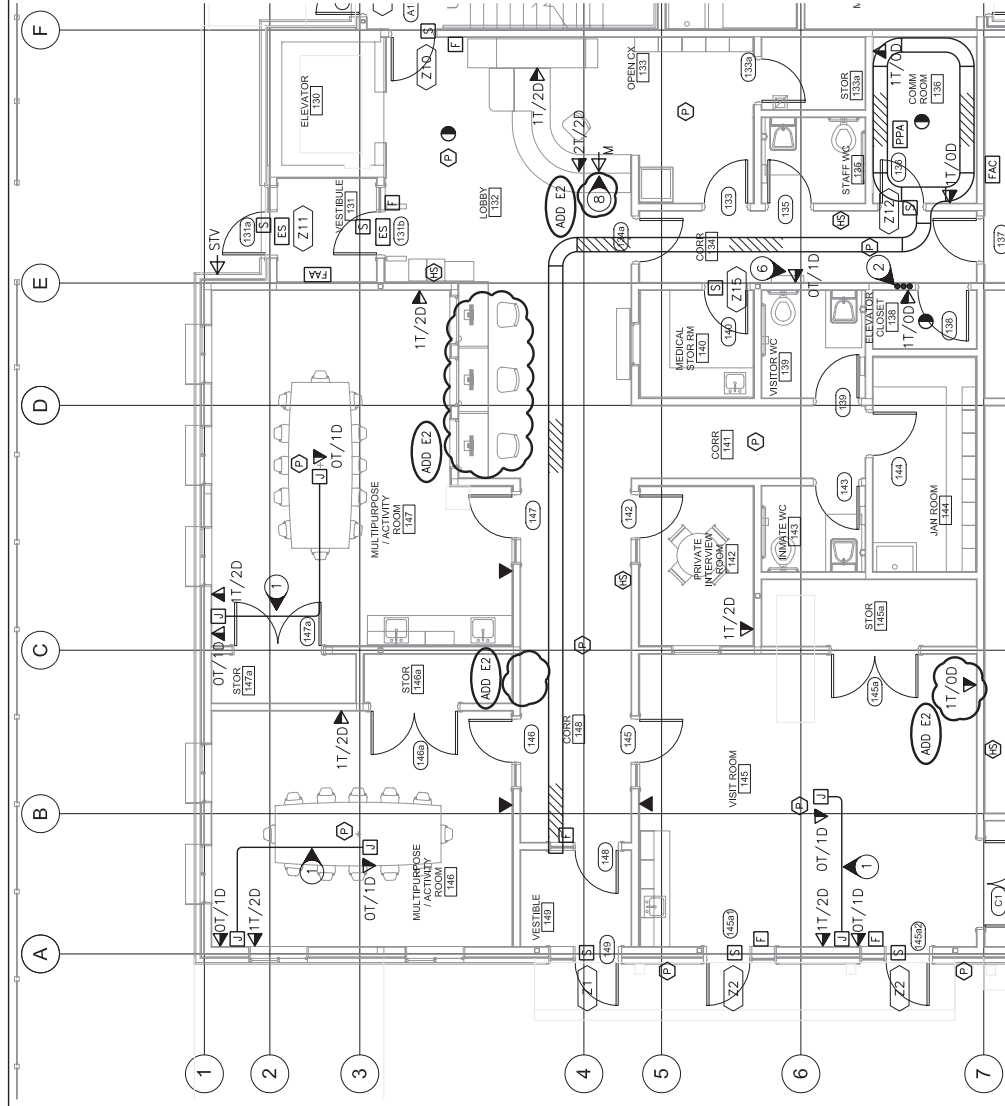
 **GENIVAR**  
1985 WEST BROADWAY, SUITE 200  
VANCOUVER, BRITISH COLUMBIA, CANADA V6J 4Y3  
TELEPHONE: (604) 736-5421  
FAX: (604) 736-1519

CORRECTIONAL SERVICE OF CANADA - FRASER VALLEY INSTITUTION  
33344 KING ROAD, ABBOTSFORD, B.C. - TWENTY BED LIVING UNIT

PART DRAWING E300  
ISSUED FOR ADD-E2

Proj. No. 052462.001	Scale: 1:100	Date: 13 July 23	Designed: K.B.	Drawing No.: ESK-E300-01
-------------------------	-----------------	---------------------	-------------------	-----------------------------





GENERAL NOTES .:

1. ALL CABLE TRAYS ARE 300mm WIDE UNLESS NOTED OTHERWISE
2. REFER TO ARCHITECTURAL DRAWINGS FOR CELL OUTLET LOCATIONS AND ELEVATIONS.

KEY NOTES .:

1. 63mm AND 41mm CONDUITS TERMINATED INTO TWO 152mm x 152mm x 102mm JUNCTION BOXES (ONE FOR POWER AND ONE FOR COMM) FOR FUTURE MULTIMEDIA EQUIPMENT. ROUGH-IN REQUIREMENTS TO BE REVIEWED WITH DEPARTMENTAL REPRESENTATIVE ON SITE PRIOR TO ROUGH-IN.
2. 3x100mmC UP TO LEVEL 2
3. FIRE ALARM RELAY MODULE C/W INTERPOSING RELAYS (WIRED FAIL SAFE MODE) TO DE-ENERGIZE THE RANGE IN THE EVENT THE HOOD FAN SPRINKLER IS ACTIVATED.
4. PROVIDE A 21mm EMT CONDUIT HOME RUN BACK TO CABLE TRAY FOR FUTURE PROVISIONS.
5. 610mm x 610mm LOCKABLE ACCESS PANEL (SUPPLIED AND INSTALLED BY OTHERS) TO ACCESS LOW TENSION SERVICES.
6. SECURED KEY STORAGE CABINET. REFER TO ARCHITECTURAL DRAWINGS FOR EQUIPMENT ELEVATION.
7. INMATE TELEPHONE; PROVIDE A 102mm x 102mm x 64mm BACK BOX C/W DIVIDER. INSTALL 2x21mm EMT CONDUITS FROM THE BACK BOX TO COMM. RM. 136.
8. COORDINATE MOUNTING AND LOCATION OF MASTER INTERCOM STATION WITH DEPARTMENTAL REPRESENTATIVE PRIOR TO ROUGH-IN.



1985 WEST BROADWAY, SUITE 200  
VANCOUVER, BRITISH COLUMBIA, CANADA V6J 4Y3  
TELEPHONE: (604) 736-5421  
FAX: (604) 736-1319

CORRECTIONAL SERVICE OF CANADA - FRASER VALLEY INSTITUTION  
33344 KING ROAD, ABBOTSFORD, B.C. - TWENTY BED LIVING UNIT

PART DRAWING E003  
ISSUED FOR ADD-E1

Proj. No. R.052462.001	Scale: 1:100	Date: 13 July 23	Designed: K.B.	Drawing No.: ESK-E400-01
---------------------------	-----------------	---------------------	-------------------	-----------------------------