

Stantec

Copyright Reserved

The Contractor shall verify and be responsible for all dimensions. DO NOT scale the drawing - any errors or omissions shall be reported to Stantec without delay.
The Copyrights to all designs and drawings are the property of Stantec. Reproduction or use for any purpose other than that authorized by Stantec is forbidden.

Consultants

NOTE TO CONTRACTOR:

1. REMOVE ALL DEBRIS FROM SITE EACH DAY AND DISPOSE OF OR RECYCLE IN ACCORDANCE WITH GRANVILLE ISLAND RULES AND REGULATIONS AND CITY OF VANCOUVER BYLAWS.
2. ALL LAMPS CONTAINING MERCURY & PCB'S SHALL BE DISPOSED OF IN ACCORDANCE WITH FEDERAL LAWS.

Legend

Notes

AREA F2

Revision By Appd. YY.MM.DD

1 ISSUED FOR TENDER LAF NH 13.07.19
Issued By Appd. YY.MM.DD

File Name: 115612209_E12.dwg TS CC LAF 13.07.17
Dwn. Chkd. Dsgn. YY.MM.DD

Permit-Seal

Client/Project

CMHC SCHL
GRANVILLE ISLAND OFFICE

GRANVILLE ISLAND
HEALTH & SAFETY UPGRADE
Vancouver BC Canada

Title

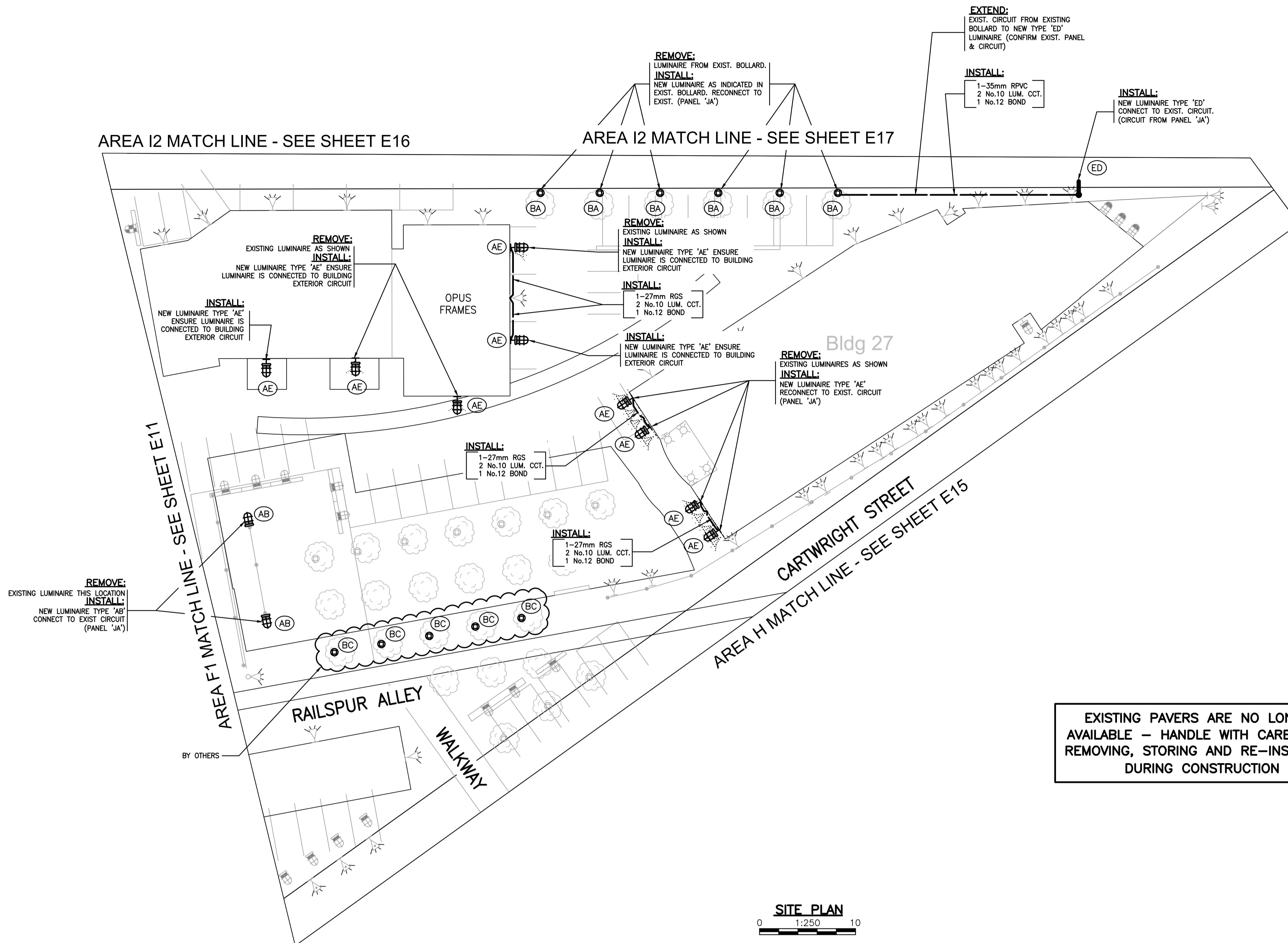
PROPOSED
LIGHTING LAYOUT
'AREA F2'

Project No. 115612209 Scale 1:250

Drawing No. Sheet Revision

E12

of



EXISTING PAVERS ARE NO LONGER AVAILABLE - HANDLE WITH CARE WHILE REMOVING, STORING AND RE-INSTALLING DURING CONSTRUCTION



208V LIGHTING

REFER TO DRAWING E20 FOR TYPICAL CONCRETE BASE DETAILS FOR LUMINAIRE POLES AND JUNCTION BOX DETAIL

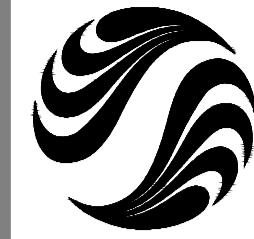
REFER TO DRAWING E21 FOR TYPICAL TRENCH DETAILS FOR CONDUIT INSTALLED BELOW GRADE

REFER TO DRAWING E00 FOR LEGEND, COLOUR CONDUCTOR CODE AND SUPPLEMENTAL SPECIFICATIONS

CONTRACTOR TO REINSTATE AREA OF CONSTRUCTION TO ITS ORIGINAL CONDITION

ALL OTHER LUMINAIRES SHOWN ON THIS DRAWING THAT ARE NOT IDENTIFIED DO NOT FORM PART OF THIS CONTRACT

PANEL 'JA' IS LOCATED WEST SIDE OF ARTS UMBRELLA BUILDING ON DWG. E15



Stantec Consulting Ltd.
1340 108th Avenue, 10th Floor
Surrey BC Canada
V3T 5T3
Tel. 604.587.8400
Fax. 604.587.1856
www.stantec.com

Stantec

Copyright Reserved

The Contractor shall verify and be responsible for all dimensions. DO NOT scale the drawing - any errors or omissions shall be reported to Stantec without delay.
The Copyrights to all designs and drawings are the property of Stantec. Reproduction or use for any purpose other than that authorized by Stantec is forbidden.

Consultants

NOTE TO CONTRACTOR:

1. REMOVE ALL DEBRIS FROM SITE EACH DAY AND DISPOSE OF OR RECYCLE IN ACCORDANCE WITH GRANVILLE ISLAND RULES AND REGULATIONS AND CITY OF VANCOUVER BYLAWS.
2. ALL LAMPS CONTAINING MERCURY & PCB'S SHALL BE DISPOSED OF IN ACCORDANCE WITH FEDERAL LAWS.

Legend

Notes

AREA G1

Revision By Appd. YY.MM.DD

1 ISSUED FOR TENDER LAF NH 13.07.19
Issued By Appd. YY.MM.DD

File Name: 115612209_E13.dwg TS CC LAF 13.07.17
Dwn. Chkd. Dsgn. YY.MM.DD

Permit-Seal

Client/Project

CMHC SCHL
GRANVILLE ISLAND OFFICE

GRANVILLE ISLAND
HEALTH & SAFETY UPGRADE

Vancouver BC Canada

Title

PROPOSED
LIGHTING LAYOUT
'AREA G1'

Project No. 115612209 Scale 1:250

Drawing No. Sheet Revision

E13

of

AREA F1 MATCH LINE - SEE SHEET E11

CARTWRIGHT STREET

FORGE & FORM

NEW LEAF EDITIONS

CRAFT HOUSE

FESTIVAL HOUSE

WATER PARK CONTROL PANEL

CATS SOCIAL HOUSE

AREA E MATCH LINE - SEE SHEET E10

PICNIC PAVILION

REMOVE:
EXIST. LUMINAIRE ON KICK RAIL
INSTALL:
NEW LUMINAIRE TYPE 'C' CONNECT
TO RECONNECT TO EXIST. CIRCUIT.
(CONFIRM PANEL AND CIRCUIT)

FALSE CREEK COMMUNITY CENTRE

BY OTHERS

POND

BY OTHERS

SIGN

POND

EXISTING PAVERS ARE NO LONGER AVAILABLE - HANDLE WITH CARE WHILE REMOVING, STORING AND RE-INSTALLING DURING CONSTRUCTION

AREA G2 MATCH LINE - SEE SHEET E14

SITE PLAN
0 1:250 10

208V LIGHTING

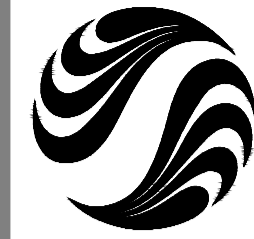
CONTRACTOR TO REINSTATE AREA OF CONSTRUCTION TO ITS ORIGINAL CONDITION

ALL OTHER LUMINAIRES SHOWN ON THIS DRAWING THAT ARE NOT IDENTIFIED DO NOT FORM PART OF THIS CONTRACT

REFER TO DRAWING E20 FOR TYPICAL CONCRETE BASE DETAILS FOR LUMINAIRE POLES AND JUNCTION BOX DETAIL

REFER TO DRAWING E21 FOR TYPICAL TRENCH DETAILS FOR CONDUIT INSTALLED BELOW GRADE

REFER TO DRAWING E00 FOR LEGEND, COLOUR CONDUCTOR CODE AND SUPPLEMENTAL SPECIFICATIONS



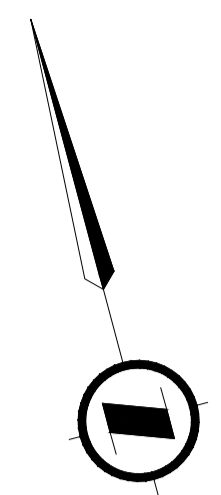
Stantec Consulting Ltd.
 1340 108th Avenue, 10th Floor
 Surrey BC Canada
 V3T 5T3
 Tel. 604.587.8400
 Fax. 604.587.1856
 www.stantec.com

Stantec

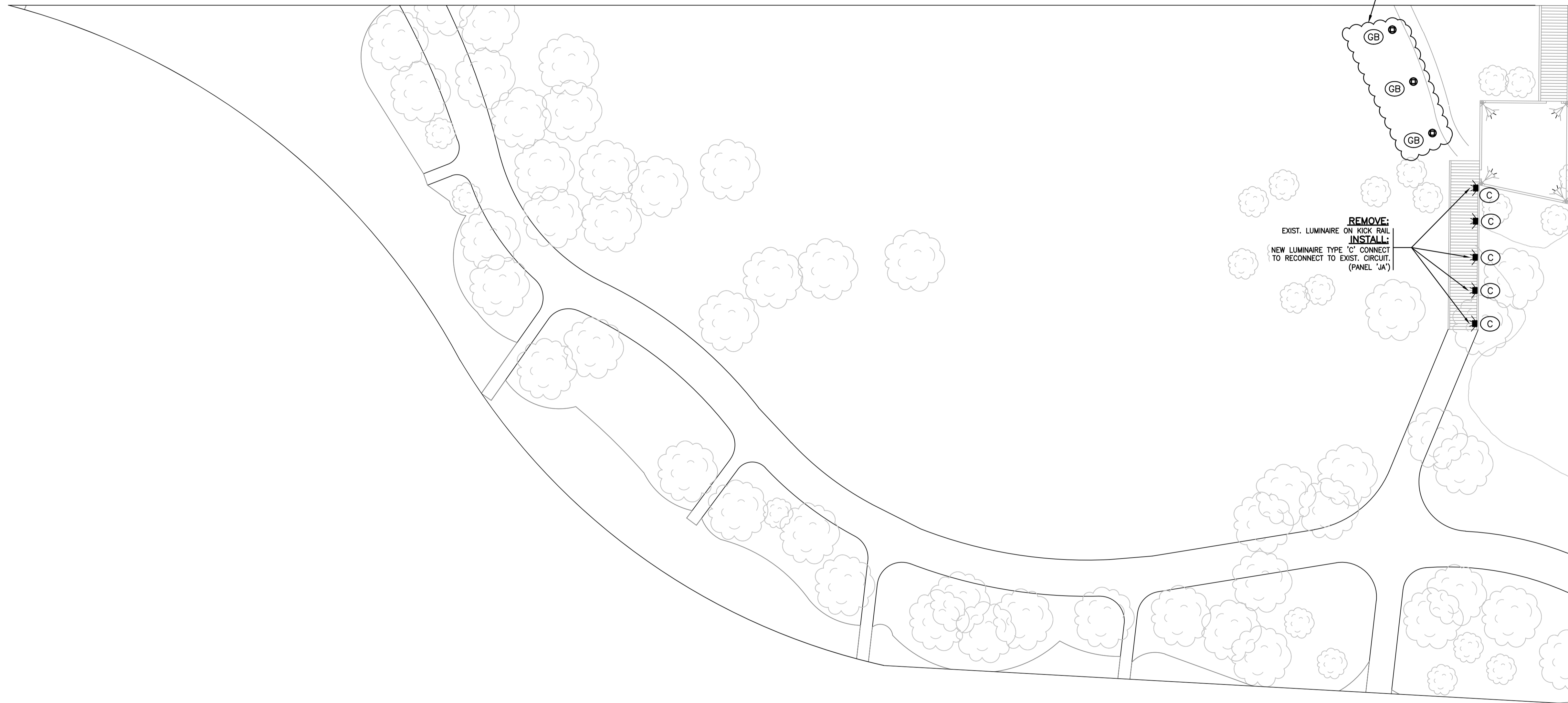
Copyright Reserved

The Contractor shall verify and be responsible for all dimensions. DO NOT scale the drawing - any errors or omissions shall be reported to Stantec without delay.
 The Copyrights to all designs and drawings are the property of Stantec. Reproduction or use for any purpose other than that authorized by Stantec is forbidden.

Consultants



AREA G1 MATCH LINE - SEE SHEET E13



NOTE TO CONTRACTOR:

1. REMOVE ALL DEBRIS FROM SITE EACH DAY AND DISPOSE OF OR RECYCLE IN ACCORDANCE WITH GRANVILLE ISLAND RULES AND REGULATIONS AND CITY OF VANCOUVER BYLAWS.
2. ALL LAMPS CONTAINING MERCURY & PCB'S SHALL BE DISPOSED OF IN ACCORDANCE WITH FEDERAL LAWS.

Legend

Notes

AREA G2

Revision	By	Appd.	YY.MM.DD
1	ISSUED FOR TENDER	LAF	NH 13.07.19
	Issued	By	Appd. YY.MM.DD
	File Name: 115612209_E14.dwg	TS	CC LAF 13.07.17
		Dwn.	Chkd. Dsgn. YY.MM.DD

Permit-Seal

Client/Project

CMHC SCHL
 GRANVILLE ISLAND OFFICE
 GRANVILLE ISLAND
 HEALTH & SAFETY UPGRADE
 Vancouver BC Canada

Title

PROPOSED
 LIGHTING LAYOUT
 'AREA G2'

Project No.	Scale
115612209	1:250
Drawing No.	Sheet
	Revision

EXISTING PAVERS ARE NO LONGER AVAILABLE - HANDLE WITH CARE WHILE REMOVING, STORING AND RE-INSTALLING DURING CONSTRUCTION

208V LIGHTING

CONTRACTOR TO REINSTATE AREA OF CONSTRUCTION TO ITS ORIGINAL CONDITION

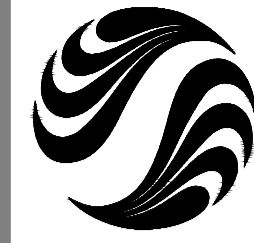
PANEL 'JA' IS LOCATED WEST SIDE OF ARTS UMBRELLA BUILDING ON DWG. E15

ALL OTHER LUMINAIRES SHOWN ON THIS DRAWING THAT ARE NOT IDENTIFIED DO NOT FORM PART OF THIS CONTRACT

REFER TO DRAWING E20 FOR TYPICAL CONCRETE BASE DETAILS FOR LUMINAIRE POLES AND JUNCTION BOX DETAIL

REFER TO DRAWING E21 FOR TYPICAL TRENCH DETAILS FOR CONDUIT INSTALLED BELOW GRADE

REFER TO DRAWING E00 FOR LEGEND, COLOUR CONDUCTOR CODE AND SUPPLEMENTAL SPECIFICATIONS



Stantec Consulting Ltd.
1340 108th Avenue, 10th Floor
Surrey BC Canada
V3T 5T3
Tel. 604.587.8400
Fax. 604.587.1856
www.stantec.com

Copyright Reserved
The Contractor shall verify and be responsible for all dimensions. DO NOT scale the drawing - any errors or omissions shall be reported to Stantec without delay.
The Copyrights to all designs and drawings are the property of Stantec. Reproduction or use for any purpose other than that authorized by Stantec is forbidden.

Consultants

NOTE TO CONTRACTOR:

- REMOVE ALL DEBRIS FROM SITE EACH DAY AND DISPOSE OF OR RECYCLE IN ACCORDANCE WITH GRANVILLE ISLAND RULES AND REGULATIONS AND CITY OF VANCOUVER BYLAWS.
- ALL LAMPS CONTAINING MERCURY & PCB'S SHALL BE DISPOSED OF IN ACCORDANCE WITH FEDERAL LAWS.

Legend

Notes

AREA H

Revision	By	Appd.	YY.MM.DD
1	ISSUED FOR TENDER	LAF	NH 13.07.19
Issued		By	Appd. YY.MM.DD
File Name:	115612209_E15.dwg	TS	CC LAF 13.07.17
		Dwn.	Chkd. Dsgn. YY.MM.DD

Permit-Seal

Client/Project

CMHC SCHL
GRANVILLE ISLAND OFFICE
GRANVILLE ISLAND
HEALTH & SAFETY UPGRADE
Vancouver BC Canada

Title

**PROPOSED
LIGHTING LAYOUT
'AREA H'**

Project No.	115612209	Scale	1:250
Drawing No.		Sheet	Revision

E15

of

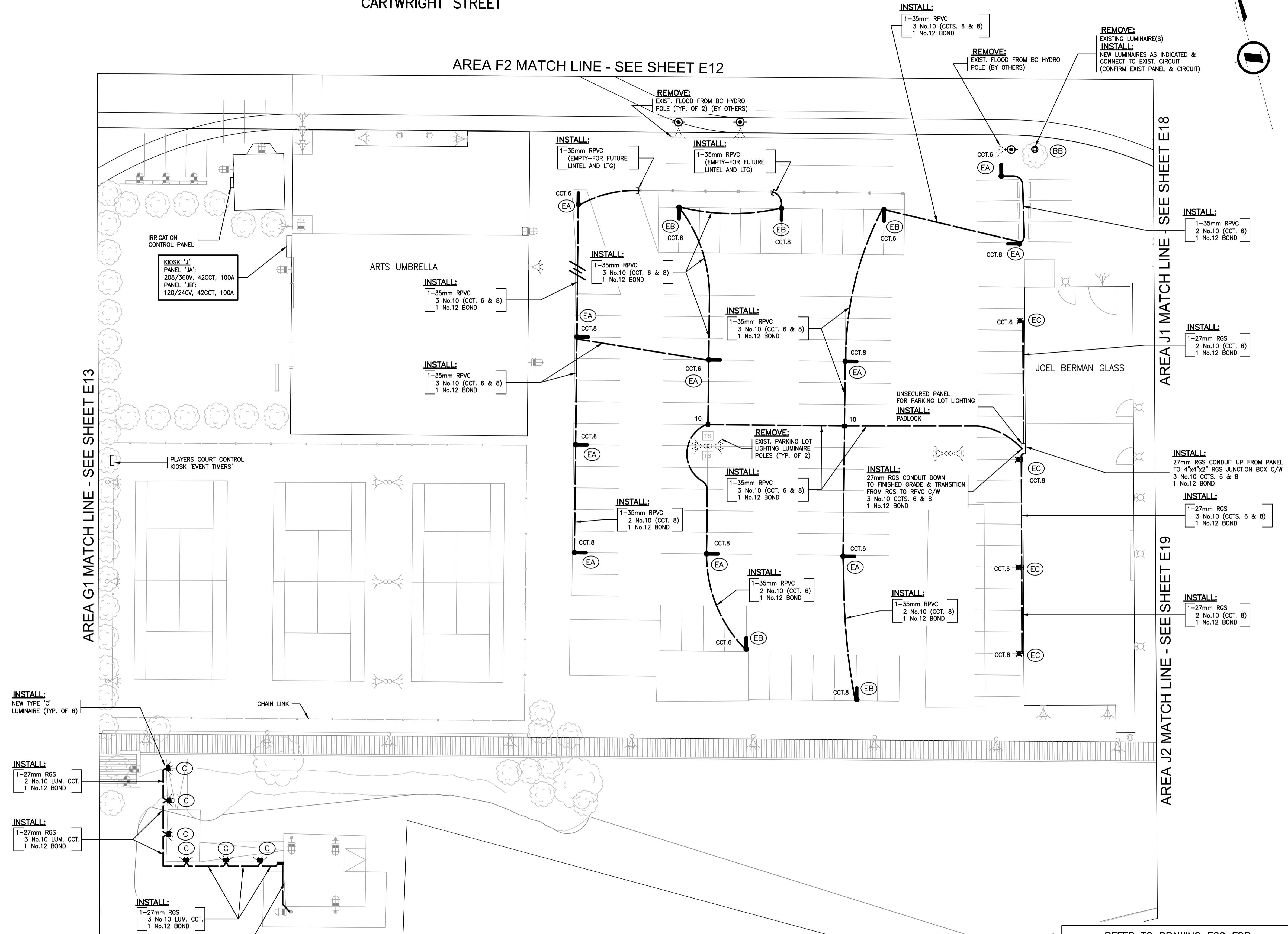
CARTWRIGHT STREET

AREA F2 MATCH LINE - SEE SHEET E12

AREA G1 MATCH LINE - SEE SHEET E13

AREA J1 MATCH LINE - SEE SHEET E18

AREA J2 MATCH LINE - SEE SHEET E19



EXISTING PAVERS ARE NO LONGER AVAILABLE - HANDLE WITH CARE WHILE REMOVING, STORING AND RE-INSTALLING DURING CONSTRUCTION

208V LIGHTING

CONTRACTOR TO REINSTATE AREA OF CONSTRUCTION TO ITS ORIGINAL CONDITION

ALL OTHER LUMINAIRE SHOWN ON THIS DRAWING THAT ARE NOT IDENTIFIED DO NOT FORM PART OF THIS CONTRACT

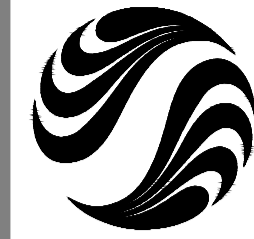
REFER TO DRAWING E20 FOR TYPICAL CONCRETE BASE DETAILS FOR LUMINAIRE POLES AND JUNCTION BOX DETAIL

REFER TO DRAWING E21 FOR TYPICAL TRENCH DETAILS FOR CONDUIT INSTALLED BELOW GRADE

REFER TO DRAWING E00 FOR LEGEND, COLOUR CONDUCTOR CODE AND SUPPLEMENTAL SPECIFICATIONS



U:\115612209\drawings\115612209_E15.dwg
2013/07/25 11:27 AM By: Foster, Lura



Stantec Consulting Ltd.
 1340 108th Avenue, 10th Floor
 Surrey BC Canada
 V3T 5T3
 Tel. 604.587.8400
 Fax. 604.587.1856
 www.stantec.com

Stantec

Copyright Reserved

The Contractor shall verify and be responsible for all dimensions. DO NOT scale the drawing - any errors or omissions shall be reported to Stantec without delay.
 The Copyrights to all designs and drawings are the property of Stantec. Reproduction or use for any purpose other than that authorized by Stantec is forbidden.

Consultants

NOTE TO CONTRACTOR:

1. REMOVE ALL DEBRIS FROM SITE EACH DAY AND DISPOSE OF OR RECYCLE IN ACCORDANCE WITH GRANVILLE ISLAND RULES AND REGULATIONS AND CITY OF VANCOUVER BYLAWS.
2. ALL LAMPS CONTAINING MERCURY & PCB'S SHALL BE DISPOSED OF IN ACCORDANCE WITH FEDERAL LAWS.

Legend

Notes

AREA I1

Revision	By	Appd.	YY.MM.DD
1	ISSUED FOR TENDER	LAF	NH 13.07.19
	Issued	By	Appd. YY.MM.DD
	File Name: 115612209_E16.dwg	TS	CC LAF 13.07.17
		Dwn.	Chkd. Dsgn. YY.MM.DD

Permit-Seal

Client/Project

CMHC SCHL
 GRANVILLE ISLAND OFFICE
 GRANVILLE ISLAND
 HEALTH & SAFETY UPGRADE
 Vancouver BC Canada

Title

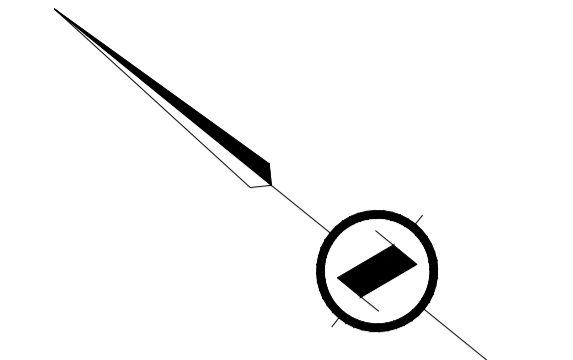
**PROPOSED
 LIGHTING LAYOUT
 'AREA I1'**

Project No.	Scale
115612209	1:250
Drawing No.	Sheet
	Revision

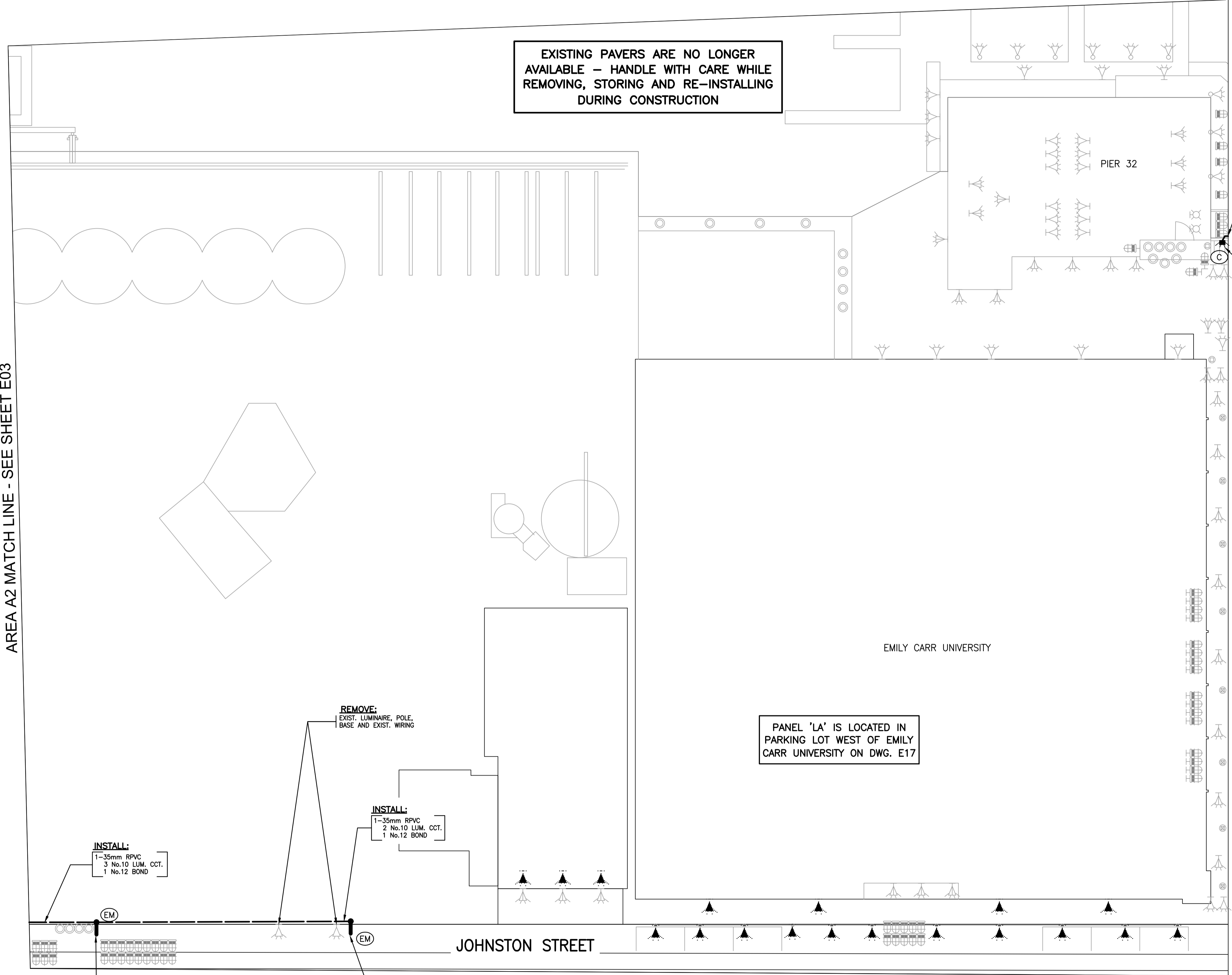
E16

of

-



EXISTING PAVERS ARE NO LONGER AVAILABLE - HANDLE WITH CARE WHILE REMOVING, STORING AND RE-INSTALLING DURING CONSTRUCTION



AREA A2 MATCH LINE - SEE SHEET E03

AREA I2 MATCH LINE - SEE SHEET E17

AREA F1 MATCH LINE - SEE SHEET E11

AREA F2 MATCH LINE - SEE SHEET E12

PANEL 'LA' IS LOCATED IN PARKING LOT WEST OF EMILY CARR UNIVERSITY ON DWG. E17

INSTALL:
 1-35mm RPVC
 3 No.10 LUM. CCT.
 1 No.12 BOND

REMOVE:
 EXIST. LUMINAIRE, POLE,
 BASE AND EXIST. WIRING

INSTALL:
 1-35mm RPVC
 2 No.10 LUM. CCT.
 1 No.12 BOND

INSTALL:
 NEW LUMINAIRE TYPE EF AS INDICATED.
 CONNECT TO EXIST. CIRCUIT (CONFIRM
 PANEL & CIRCUIT)

INSTALL:
 NEW LUMINAIRE TYPE EF AS INDICATED.
 CONNECT TO EXIST. CIRCUIT (CONFIRM
 PANEL & CIRCUIT)

INSTALL:
 30 No.10 TEC90
 LUM. CCTS. LAF,7 (TYP.)
 CAP AND TAG SPARE
 CIRCUIT IN JB

INSTALL:
 TYPE 'C' LUMINAIRES
 AS SHOWN (TYP.)

208V LIGHTING

CONTRACTOR TO REINSTATE AREA OF CONSTRUCTION TO ITS ORIGINAL CONDITION

ALL OTHER LUMINAIRES SHOWN ON THIS DRAWING THAT ARE NOT IDENTIFIED DO NOT FORM PART OF THIS CONTRACT

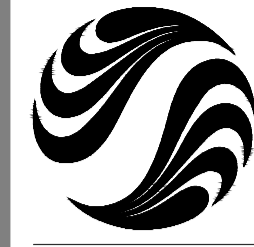
REFER TO DRAWING E20 FOR TYPICAL CONCRETE BASE DETAILS FOR LUMINAIRE POLES AND JUNCTION BOX DETAIL

REFER TO DRAWING E21 FOR TYPICAL TRENCH DETAILS FOR CONDUIT INSTALLED BELOW GRADE

REFER TO DRAWING E00 FOR LEGEND, COLOUR CONDUCTOR CODE AND SUPPLEMENTAL SPECIFICATIONS



U:\115612209\dwg\115612209_E16.dwg
 2013/07/25 11:28 AM By: Foster, Lara



Stantec Consulting Ltd.
 1340 108th Avenue, 10th Floor
 Surrey BC Canada
 V3T 5T3
 Tel. 604.587.8400
 Fax. 604.587.1856
 www.stantec.com

Copyright Reserved
 The Contractor shall verify and be responsible for all dimensions. DO NOT scale the drawing - any errors or omissions shall be reported to Stantec without delay.
 The Copyrights to all designs and drawings are the property of Stantec. Reproduction or use for any purpose other than that authorized by Stantec is forbidden.

Consultants

NOTE TO CONTRACTOR:

- REMOVE ALL DEBRIS FROM SITE EACH DAY AND DISPOSE OF OR RECYCLE IN ACCORDANCE WITH GRANVILLE ISLAND RULES AND REGULATIONS AND CITY OF VANCOUVER BYLAWS.
- ALL LAMPS CONTAINING MERCURY & PCB'S SHALL BE DISPOSED OF IN ACCORDANCE WITH FEDERAL LAWS.

Legend

Notes

AREA 12

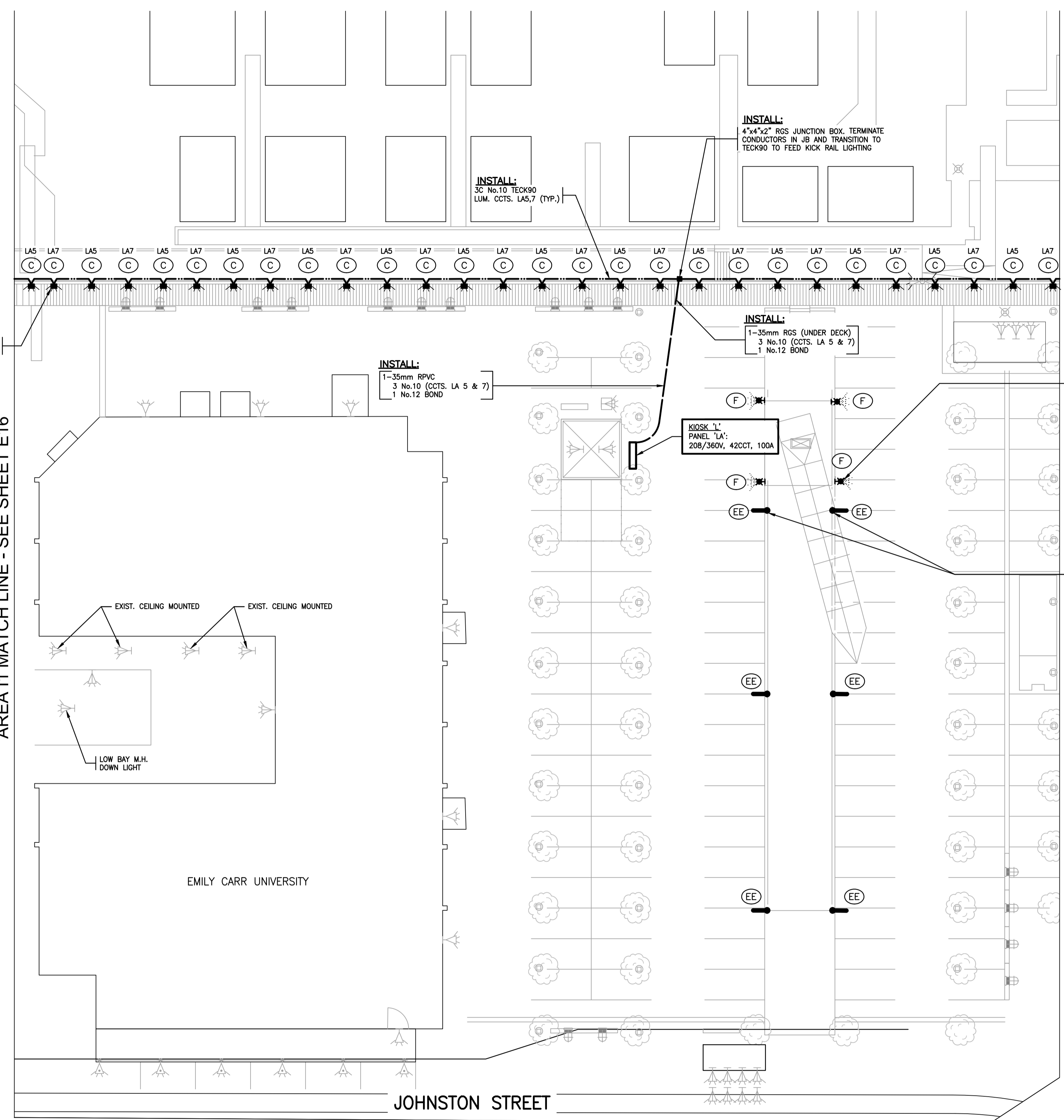
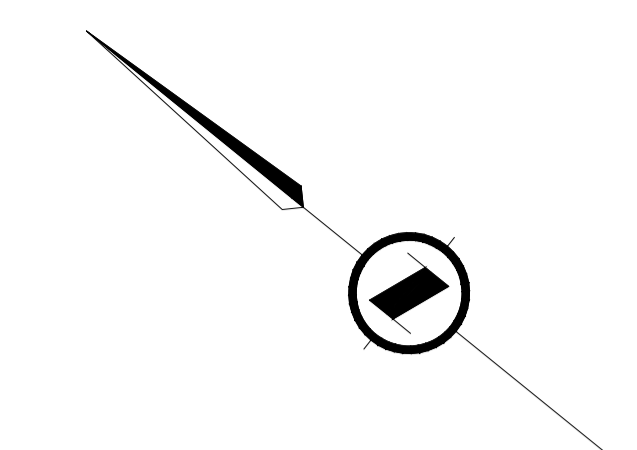
Revision	By	Appd.	YY.MM.DD
1	ISSUED FOR TENDER	LAF	NH 13.07.19
	Issued	By	Appd. YY.MM.DD
	File Name: 115612209_E17.dwg	TS	CC LAF 13.07.17
		Dwn.	Chkd. Dsgn. YY.MM.DD

Permit-Seal

Client/Project
 CMHC SCHL
 GRANVILLE ISLAND OFFICE
 GRANVILLE ISLAND
 HEALTH & SAFETY UPGRADE
 Vancouver BC Canada

Title
PROPOSED LIGHTING LAYOUT 'AREA 12'
 Project No. 115612209 Scale 1:250
 Drawing No. Sheet Revision

E17 of -



EXISTING PAVERS ARE NO LONGER AVAILABLE - HANDLE WITH CARE WHILE REMOVING, STORING AND RE-INSTALLING DURING CONSTRUCTION

REMOVE:
 EXISTING FLOOD LIGHTING
INSTALL:
 NEW TYPE 'F' LUMINAIRES AS INDICATED & RECONNECT TO EXIST. CIRCUIT (PANEL 'KB')
 (CONFIRM EXIST. PANEL & CIRCUIT)
 (TYP. FOR FOUR TYPE 'F' LUMINAIRES)

REMOVE:
 EXISTING LUMINAIRE(S)
INSTALL:
 NEW TYPE 'EE' LUMINAIRES AS INDICATED & RECONNECT TO EXIST. CIRCUIT (PANEL 'KA')
 (CONFIRM EXIST. PANEL & CIRCUIT)
 (TYP. FOR 6 TYPE 'EE' LUMINAIRES)

208V LIGHTING

CONTRACTOR TO REINSTATE AREA OF CONSTRUCTION TO ITS ORIGINAL CONDITION

ALL OTHER LUMINAIRES SHOWN ON THIS DRAWING THAT ARE NOT IDENTIFIED DO NOT FORM PART OF THIS CONTRACT

REFER TO DRAWING E20 FOR TYPICAL CONCRETE BASE DETAILS FOR LUMINAIRE POLES AND JUNCTION BOX DETAIL

REFER TO DRAWING E21 FOR TYPICAL TRENCH DETAILS FOR CONDUIT INSTALLED BELOW GRADE

REFER TO DRAWING E00 FOR LEGEND, COLOUR CONDUCTOR CODE AND SUPPLEMENTAL SPECIFICATIONS

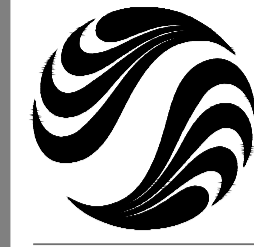


AREA I1 MATCH LINE - SEE SHEET E16

AREA J1 MATCH LINE - SEE SHEET E18

AREA F2 MATCH LINE - SEE SHEET E12

U:\115612209\client\115612209_E17.dwg
 2013/07/25 11:29 AM By: Foster, Luro



Stantec Consulting Ltd.
 1340 108th Avenue, 10th Floor
 Surrey BC Canada
 V3T 5T3
 Tel. 604.587.8400
 Fax. 604.587.1856
 www.stantec.com

Copyright Reserved
 The Contractor shall verify and be responsible for all dimensions. DO NOT scale the drawing - any errors or omissions shall be reported to Stantec without delay.
 The Copyrights to all designs and drawings are the property of Stantec. Reproduction or use for any purpose other than that authorized by Stantec is forbidden.

Consultants

- NOTE TO CONTRACTOR:**
1. REMOVE ALL DEBRIS FROM SITE EACH DAY AND DISPOSE OF OR RECYCLE IN ACCORDANCE WITH GRANVILLE ISLAND RULES AND REGULATIONS AND CITY OF VANCOUVER BYLAWS.
 2. ALL LAMPS CONTAINING MERCURY & PCB'S SHALL BE DISPOSED OF IN ACCORDANCE WITH FEDERAL LAWS.

Legend

Notes

AREA J1

Revision	By	Appd.	YY.MM.DD
1	ISSUED FOR TENDER	LAF	NH 13.07.19
	Issued	By	Appd. YY.MM.DD
	File Name: 115612209_E18.dwg	TS	CC LAF 13.07.17
		Dwn.	Chkd. Dsgn. YY.MM.DD

Permit-Seal

Client/Project
 CMHC SCHL
 GRANVILLE ISLAND OFFICE
 GRANVILLE ISLAND
 HEALTH & SAFETY UPGRADE
 Vancouver BC Canada

Title
 PROPOSED
 LIGHTING LAYOUT
 'AREA J1'

Project No. 115612209
 Drawing No. Sheet Revision
 Scale 1:250

EXISTING PAVERS ARE NO LONGER AVAILABLE - HANDLE WITH CARE WHILE REMOVING, STORING AND RE-INSTALLING DURING CONSTRUCTION

PANEL 'LA' IS LOCATED IN PARKING LOT WEST OF EMILY CARR UNIVERSITY ON DWG. E17

INSTALL:
 1-35mm RPVC
 2 No.10 LUM. CCT.
 1 No.12 BOND
EXTEND:
 EXIST. CIRCUIT FROM EXIST. BOLLARD
 (CONFIRM PANEL & CIRCUIT)

INSTALL:
 NEW TYPE 'C' LUMINAIRES ON TO KICK RAIL
 CONNECT TO CIRCUITS FROM PANEL 'LA' AS
 INDICATED (TYP. OF 9)
 REFER TO INSTALLATION DETAIL ON SHEET E22

INSTALL:
 NEW TYPE 'C' LUMINAIRES ON TO KICK RAIL
 CONNECT TO CIRCUITS FROM PANEL 'KA' AS
 INDICATED (TYP. OF 18)
 REFER TO INSTALLATION DETAIL ON SHEET E22

REMOVE:
 EXISTING LUMINAIRE(S) FROM
 EXIST. BOLLARD
INSTALL:
 NEW LUMINAIRES RECONNECT
 TO EXIST. CIRCUIT (PANEL 'KA')

INSTALL:
 1-35mm RGS
 3 No.10 (CCTS. KA17 & 19)
 1 No.12 BOND

1-35mm RGS
 3 No.10 (CCTS. KA17 & 19)
 1 No.12 BOND
 3C No.10 TECK90
 LUM. CCTS. KA17,19 (TYP.)

INSTALL:
 1-35mm RGS
 3 No.10 (CCTS. KA17 & 19)
 1 No.12 BOND

AREA J2 MATCH LINE - SEE SHEET E19

AREA H MATCH LINE - SEE SHEET E15

AREA I2 MATCH LINE - SEE SHEET E17



208V LIGHTING

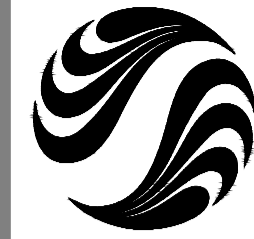
CONTRACTOR TO REINSTATE AREA OF CONSTRUCTION TO ITS ORIGINAL CONDITION

ALL OTHER LUMINAIRES SHOWN ON THIS DRAWING THAT ARE NOT IDENTIFIED DO NOT FORM PART OF THIS CONTRACT

REFER TO DRAWING E20 FOR TYPICAL CONCRETE BASE DETAILS FOR LUMINAIRE POLES AND JUNCTION BOX DETAIL

REFER TO DRAWING E21 FOR TYPICAL TRENCH DETAILS FOR CONDUIT INSTALLED BELOW GRADE

REFER TO DRAWING E00 FOR LEGEND, COLOUR CONDUCTOR CODE AND SUPPLEMENTAL SPECIFICATIONS



Copyright Reserved

The Contractor shall verify and be responsible for all dimensions. DO NOT scale the drawing - any errors or omissions shall be reported to Stantec without delay.
 The Copyrights to all designs and drawings are the property of Stantec. Reproduction or use for any purpose other than that authorized by Stantec is forbidden.

Consultants

NOTE TO CONTRACTOR:

1. REMOVE ALL DEBRIS FROM SITE EACH DAY AND DISPOSE OF OR RECYCLE IN ACCORDANCE WITH GRANVILLE ISLAND RULES AND REGULATIONS AND CITY OF VANCOUVER BYLAWS.
2. ALL LAMPS CONTAINING MERCURY & PCB'S SHALL BE DISPOSED OF IN ACCORDANCE WITH FEDERAL LAWS.

Legend

Notes

AREA J2

Revision By Appd. YY.MM.DD

1 ISSUED FOR TENDER LAF NH 13.07.19
 Issued By Appd. YY.MM.DD

File Name: 115612209_E19.dwg TS CC LAF 13.07.17
 Dwn. Chkd. Dsgn. YY.MM.DD

Permit-Seal

Client/Project
 CMHC SCHL
 GRANVILLE ISLAND OFFICE

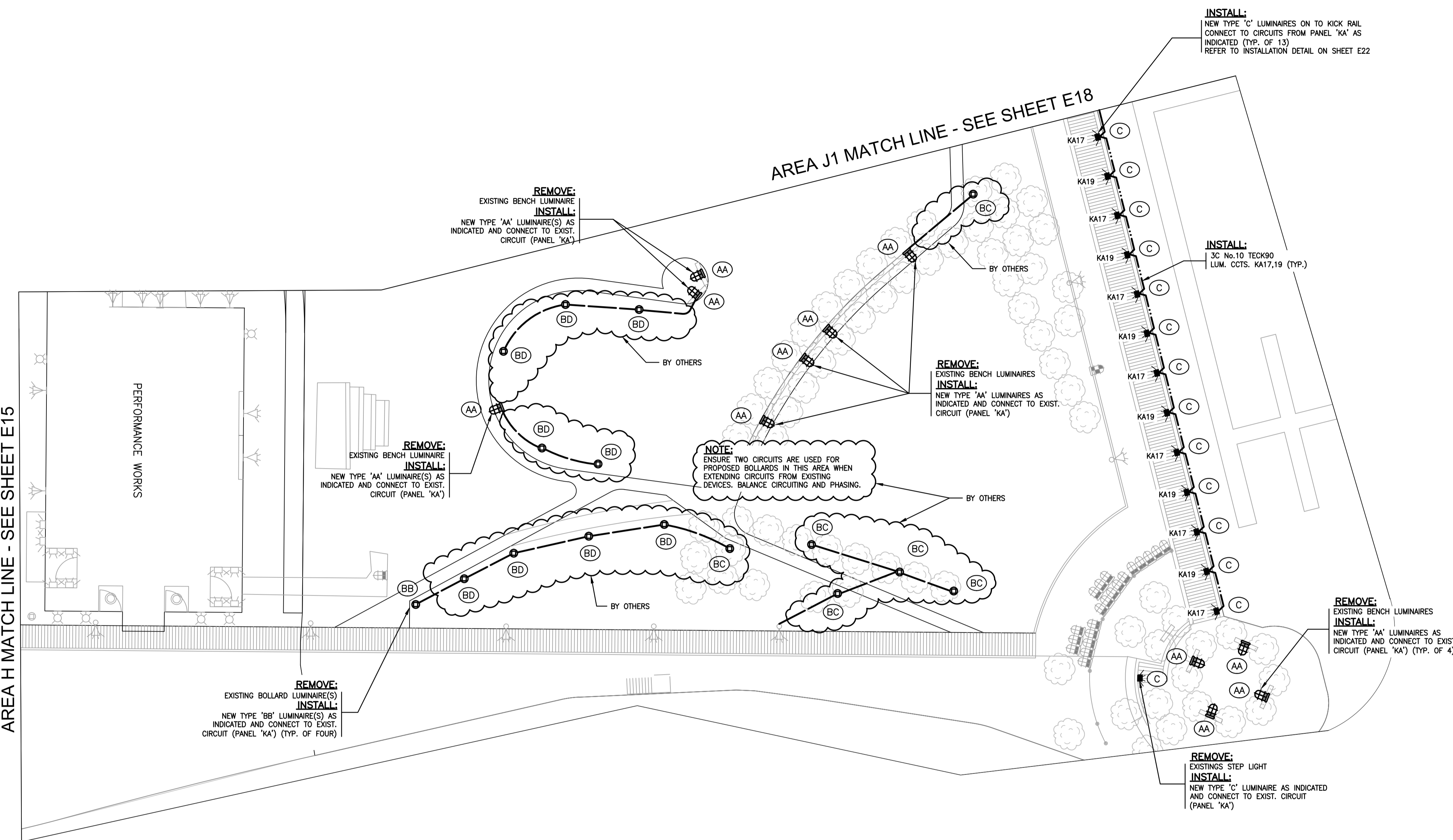
 GRANVILLE ISLAND
 HEALTH & SAFETY UPGRADE
 Vancouver BC Canada

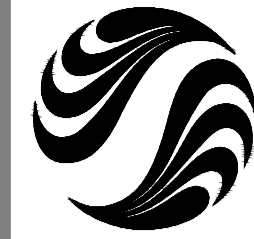
Title
**PROPOSED
 LIGHTING LAYOUT
 'AREA J2'**

Project No. 115612209 Scale 1:250
 Drawing No. Sheet Revision

E19

of





Stantec

Copyright Reserved

The Contractor shall verify and be responsible for all dimensions. DO NOT scale the drawing - any errors or omissions shall be reported to Stantec without delay.
The Copyrights to all designs and drawings are the property of Stantec. Reproduction or use for any purpose other than that authorized by Stantec is forbidden.

Consultants

Legend

Notes

Revision	By	Appd.	YY.MM.DD
1	ISSUED FOR TENDER	LAF	NH 13.07.19
	Issued	By	Appd. YY.MM.DD
	File Name: 115612209_E20.dwg	TS	CC LAF 13.07.19
		Dwn.	Chkd. Dsgn. YY.MM.DD

Permit-Seal

Client/Project
CMHC SCHL
GRANVILLE ISLAND OFFICE
GRANVILLE ISLAND
HEALTH & SAFETY UPGRADE
Vancouver BC Canada

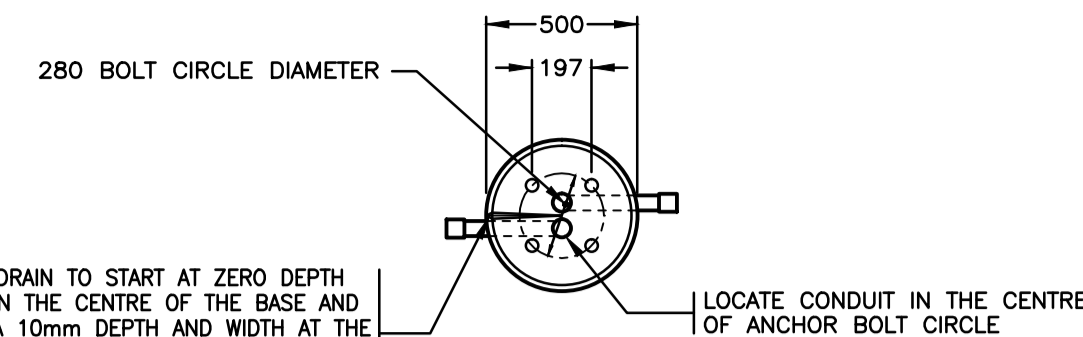
Title
ELECTRICAL
INSTALLATION DETAILS
CONCRETE BASES & JUNCTION BOX

Project No.	Scale
115612209	NTS
Drawing No.	Sheet
	Revision

E20

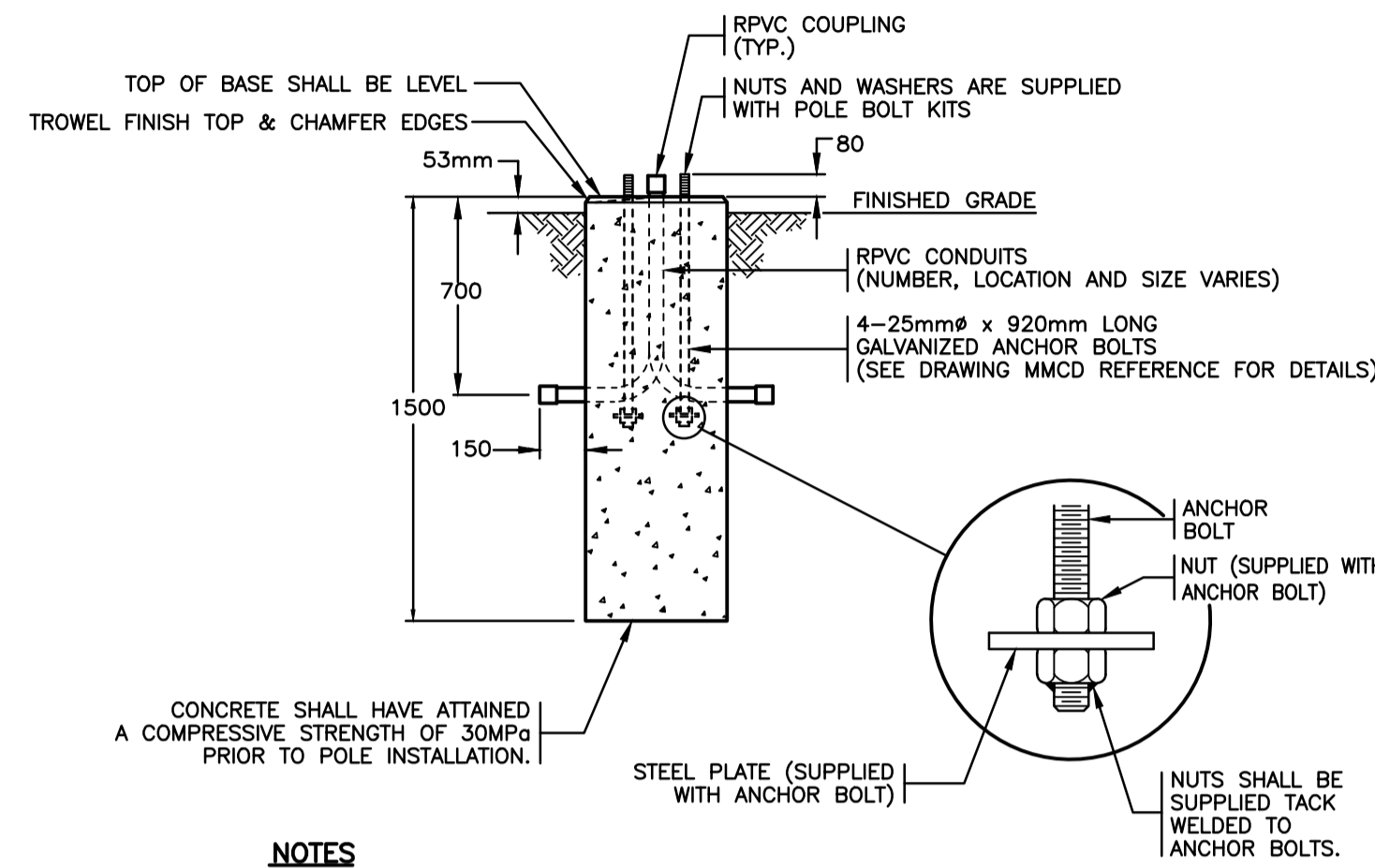
of

-



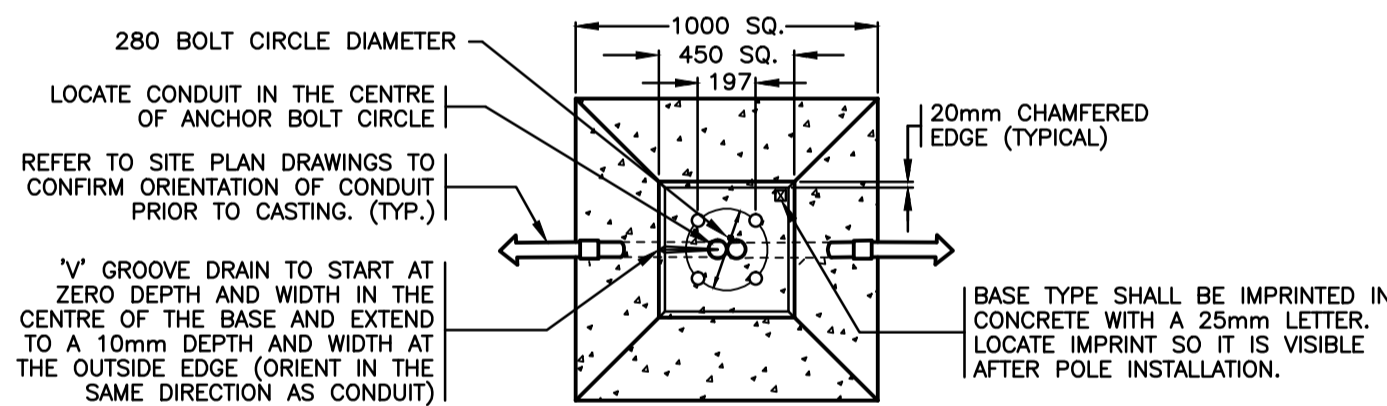
Y GROOVE DRAIN TO START AT ZERO DEPTH AND WIDTH IN THE CENTRE OF THE BASE AND EXTEND TO A 10mm DEPTH AND WIDTH AT THE OUTSIDE EDGE (ORIENT IN THE SAME DIRECTION AS CONDUIT)

**TOP VIEW
ROADSIDE**



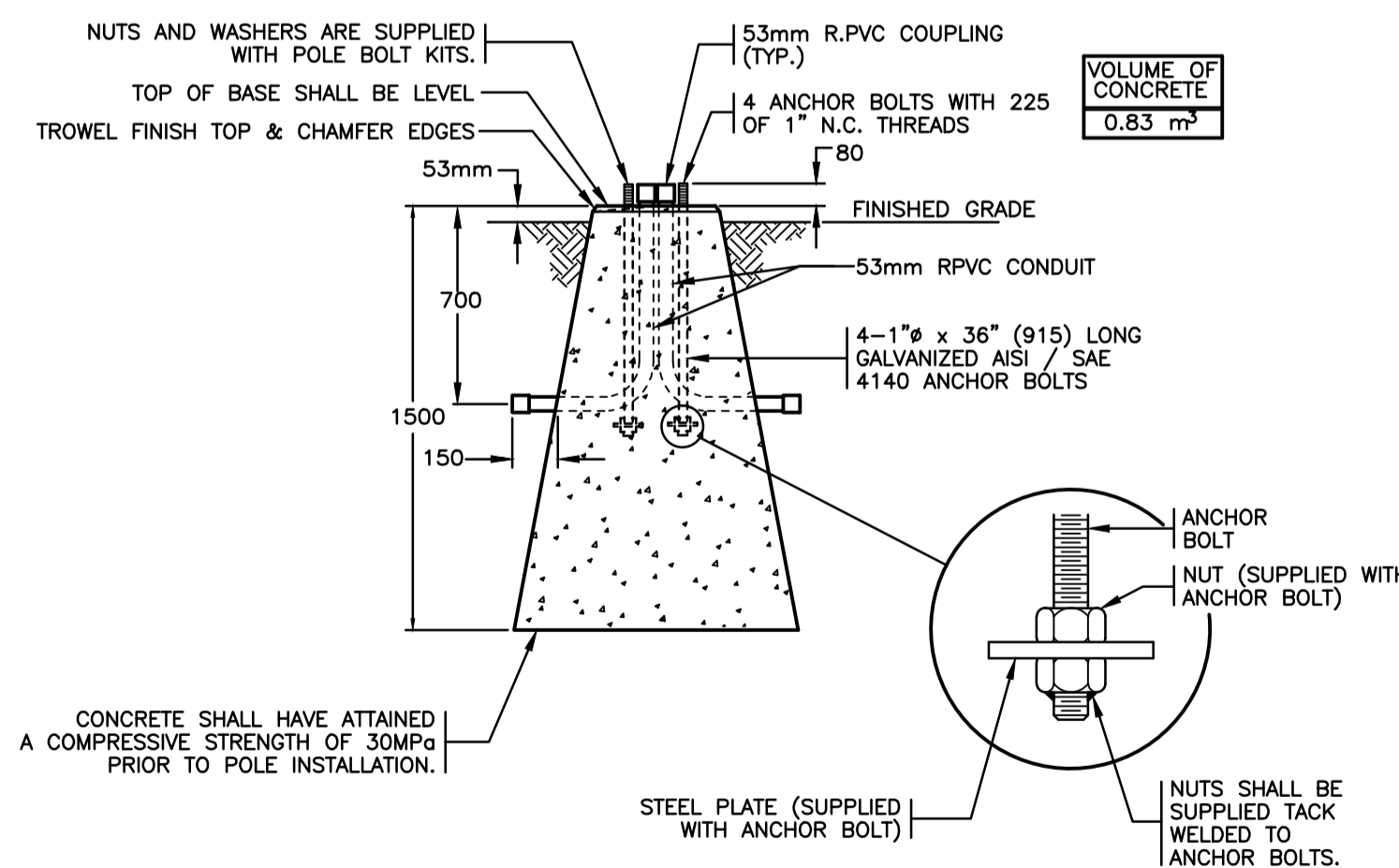
- NOTES**
1. ALL DIMENSIONS ARE IN MILLIMETRES UNLESS OTHERWISE NOTED.
 2. SEE MMCD DRAWINGS FOR BACKFILL REQUIREMENTS.

**MODIFIED TYPE B CONCRETE BASE FOR
LOOP FEEDING LUMINAIRE POLES**
N.T.S.



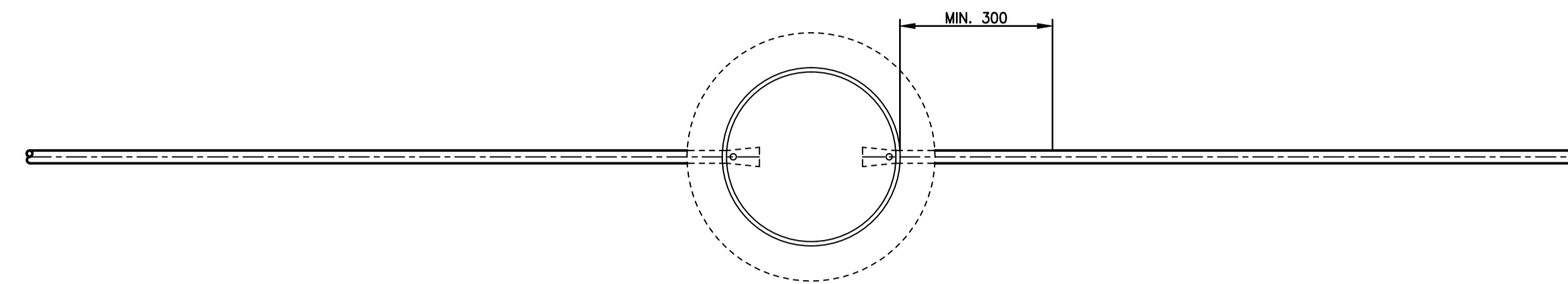
Y GROOVE DRAIN TO START AT ZERO DEPTH AND WIDTH IN THE CENTRE OF THE BASE AND EXTEND TO A 10mm DEPTH AND WIDTH AT THE OUTSIDE EDGE (ORIENT IN THE SAME DIRECTION AS CONDUIT)

**TOP VIEW
ROADSIDE**

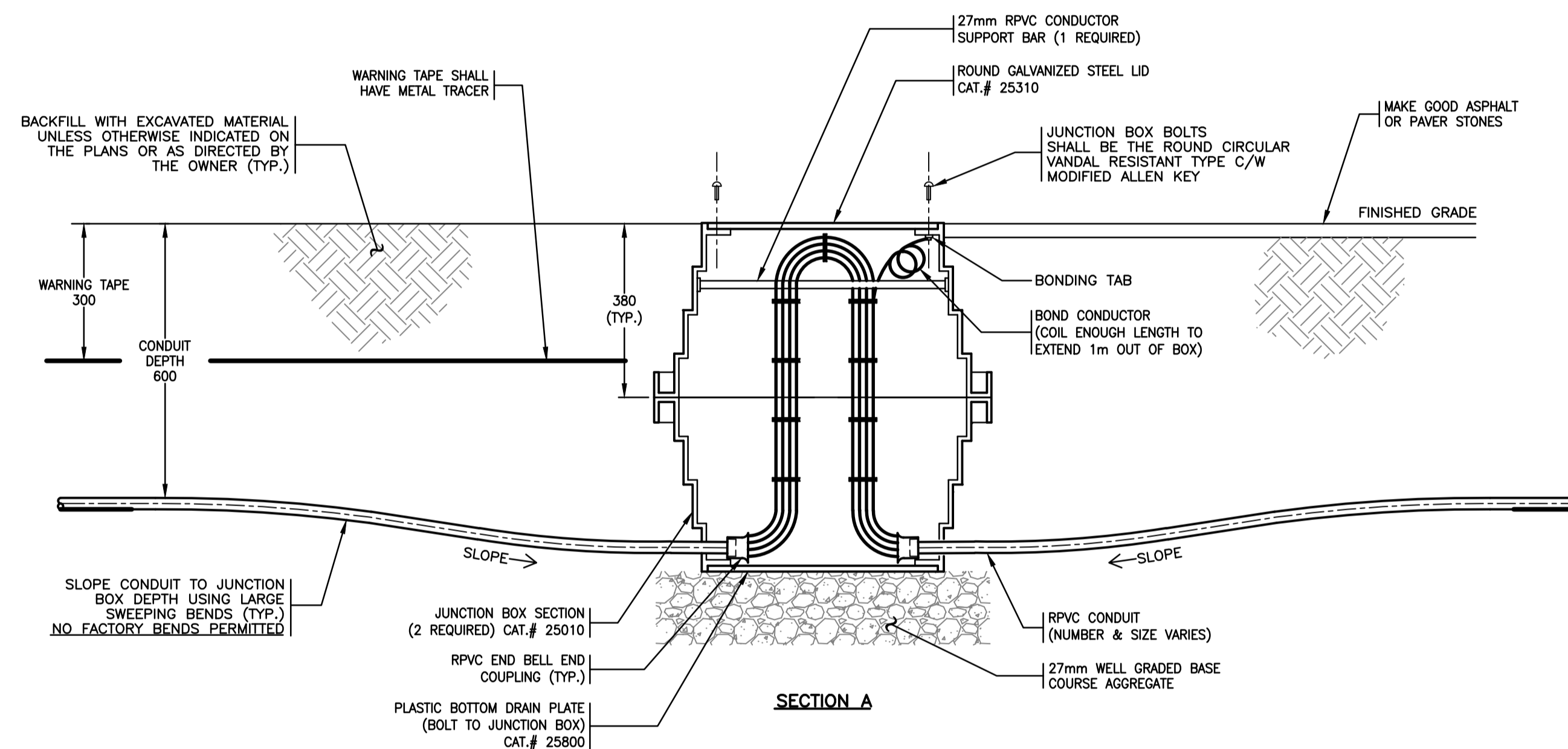


- NOTES**
1. ALL DIMENSIONS ARE IN MILLIMETRES UNLESS OTHERWISE NOTED.
 2. SEE MMCD DRAWINGS FOR BACKFILL REQUIREMENTS.

**MODIFIED TYPE C CONCRETE BASE FOR
LOOP FEEDING LUMINAIRE POLES**
N.T.S.



PLAN



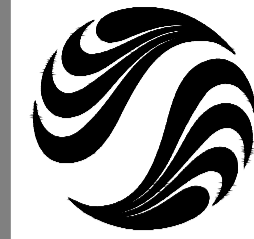
SECTION A

- JUNCTION BOX NOTES:**
1. JUNCTION BOX SHALL BE SET LEVEL PRIOR TO FILLING AND TAMPING.
 2. CATALOG NUMBERS INDICATED ARE FROM VALMONT WEST COAST ENGINEERING. THIS IS A PRE-APPROVED PRODUCT. SUBMIT SHOP DRAWINGS SEVEN (7) PRIOR TO CLOSE OF TENDER FOR CONSIDERATION OF ALTERNATIVES.

TYPE 10 JUNCTION BOX DETAIL
N.T.S.

EXISTING PAVERS ARE NO LONGER AVAILABLE - HANDLE WITH CARE WHILE REMOVING, STORING AND RE-INSTALLING DURING CONSTRUCTION

REFER TO DRAWING E00
FOR LEGEND, COLOUR CONDUCTOR
CODE AND SUPPLEMENTAL SPECIFICATIONS



Stantec

Copyright Reserved

The Contractor shall verify and be responsible for all dimensions. DO NOT scale the drawing - any errors or omissions shall be reported to Stantec without delay.
 The Copyrights to all designs and drawings are the property of Stantec. Reproduction or use for any purpose other than that authorized by Stantec is forbidden.

Consultants

Legend

Notes

Revision	By	Appd.	YY.MM.DD
1	ISSUED FOR TENDER	LAF	NH 13.07.19
Issued		By	Appd. YY.MM.DD
File Name:	115612209_E21.dwg	TS	CC LAF 13.07.17
		Dwn.	Chkd. Dsgn. YY.MM.DD

Permit-Seal

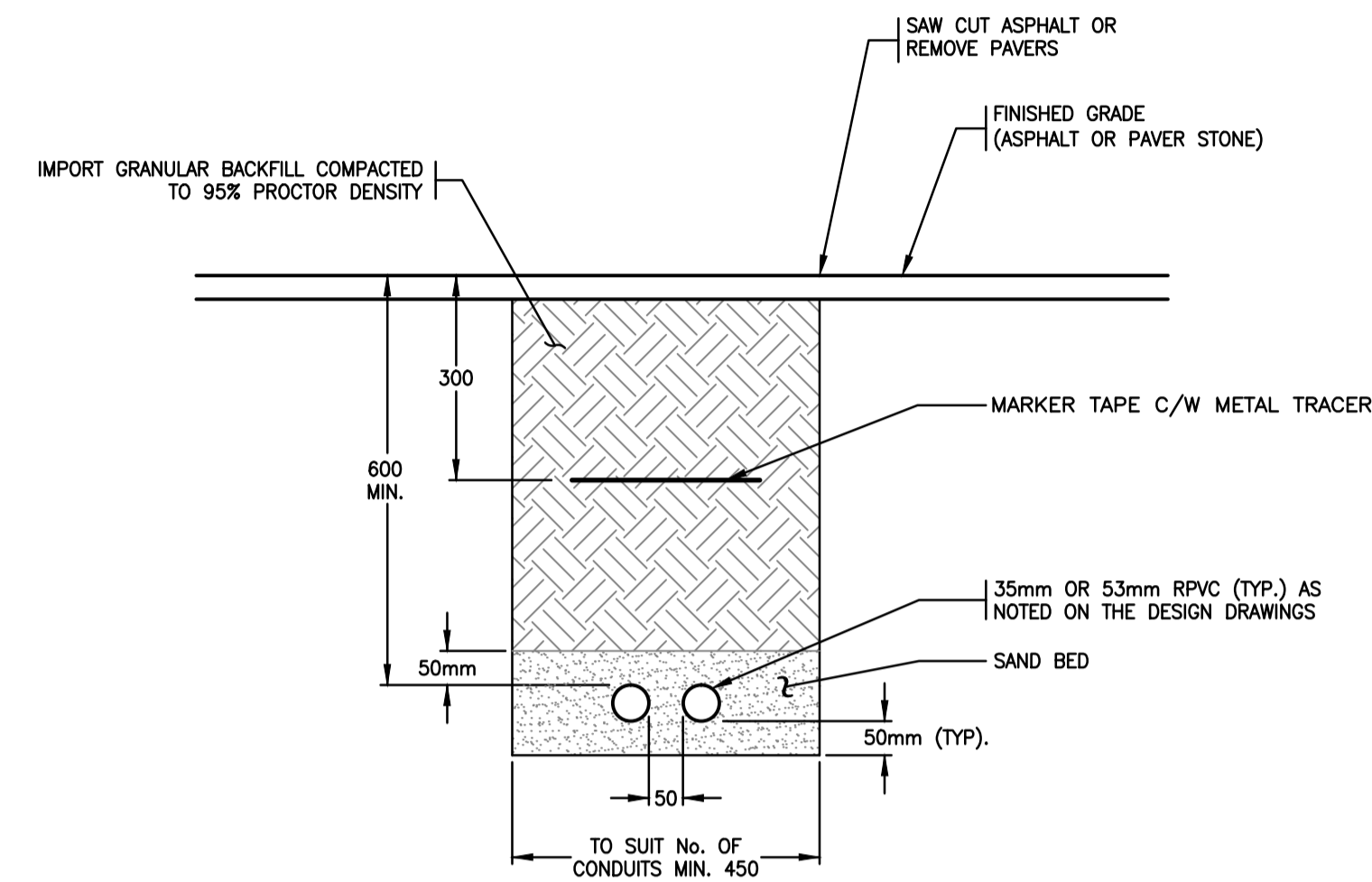
Client/Project
 CMHC SCHL
 GRANVILLE ISLAND OFFICE
 GRANVILLE ISLAND
 HEALTH & SAFETY UPGRADE
 Vancouver BC Canada

Title
 ELECTRICAL
 INSTALLATION DETAILS
 TRENCH DETAILS

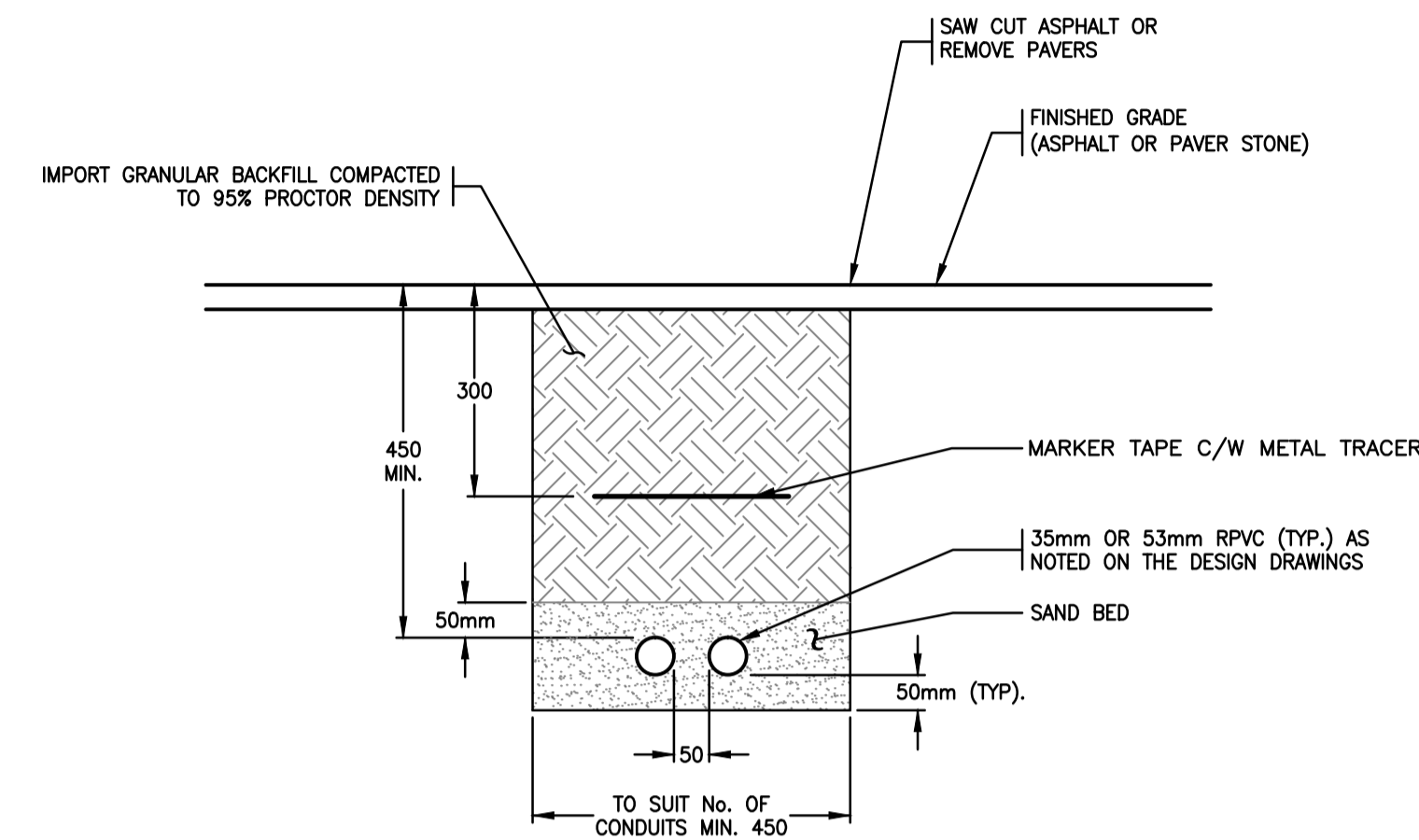
Project No.	Scale
115612209	NTS
Drawing No.	Sheet
	Revision

E21

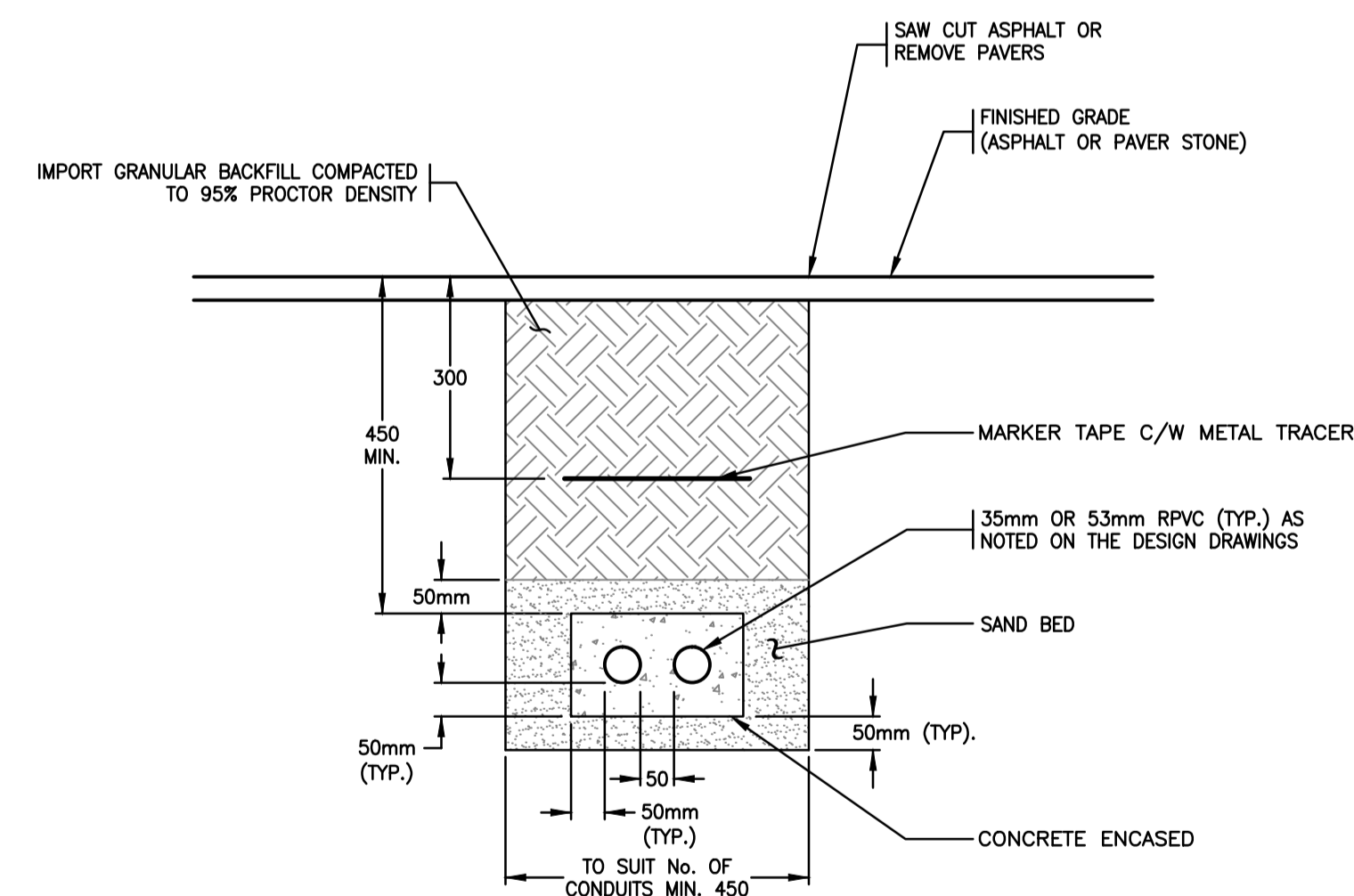
of



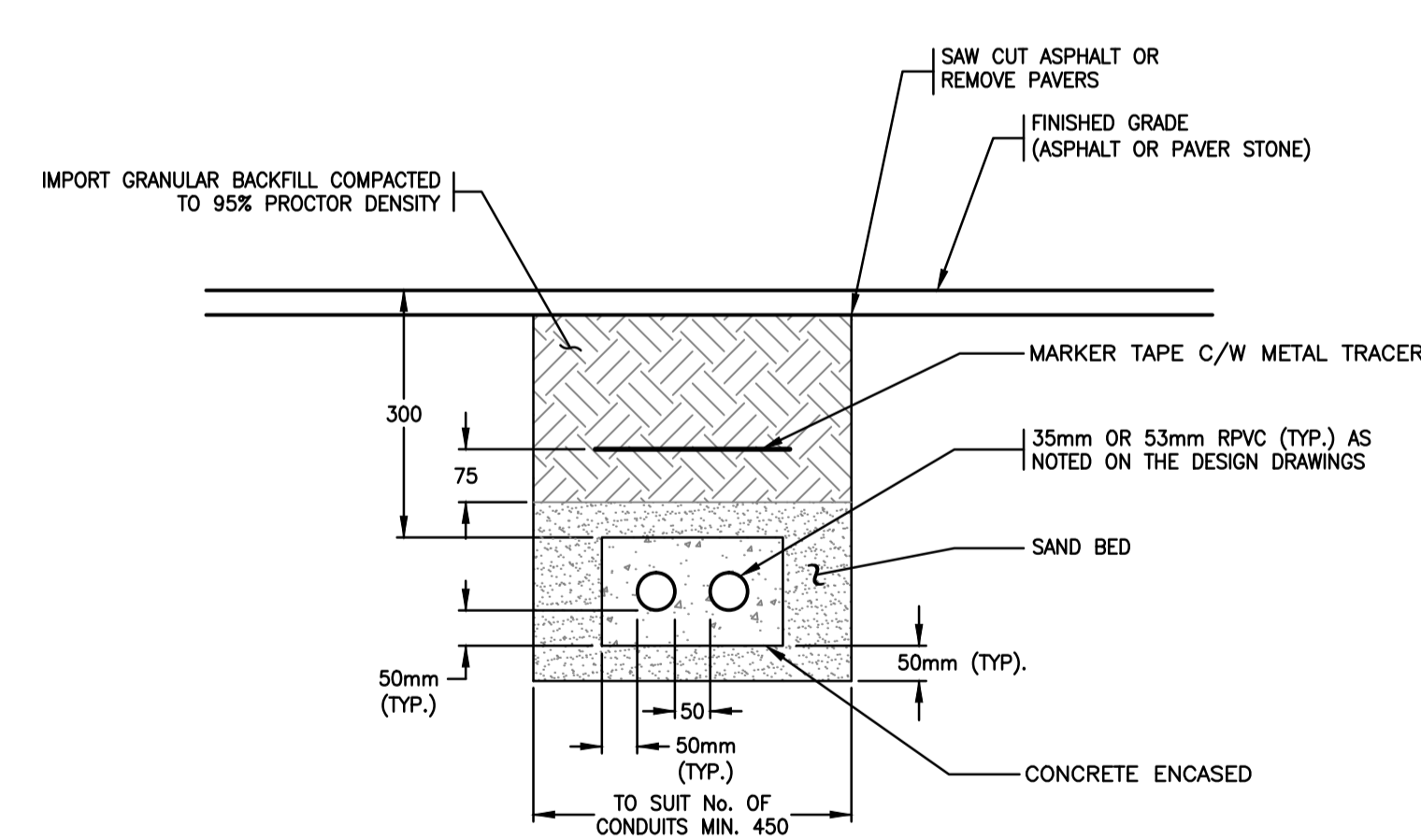
**UNDERGROUND CONDUIT
 IN VEHICULAR AREAS**
 N.T.S.



**UNDERGROUND CONDUIT
 IN NON-VEHICULAR AREAS**
 N.T.S.



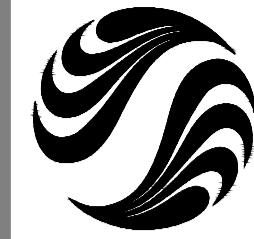
**CONDUIT IN VEHICULAR AREAS
 W/ MECHANICAL PROTECTION
 (DEPTH PER CEC CANNOT BE ACHIEVED)**
 N.T.S.



**CONDUIT IN NON-VEHICULAR AREAS
 W/ MECHANICAL PROTECTION
 (DEPTH PER CEC CANNOT BE ACHIEVED)**
 N.T.S.

EXISTING PAVERS ARE NO LONGER AVAILABLE - HANDLE WITH CARE WHILE REMOVING, STORING AND RE-INSTALLING DURING CONSTRUCTION

REFER TO DRAWING E00 FOR LEGEND, COLOUR CONDUCTOR CODE AND SUPPLEMENTAL SPECIFICATIONS



Stantec Consulting Ltd.
 1340 108th Avenue, 10th Floor
 Surrey BC Canada
 V3T 5T3
 Tel. 604.587.8400
 Fax. 604.587.1856
 www.stantec.com

Stantec

Copyright Reserved

The Contractor shall verify and be responsible for all dimensions. DO NOT scale the drawing - any errors or omissions shall be reported to Stantec without delay.
 The Copyrights to all designs and drawings are the property of Stantec. Reproduction or use for any purpose other than that authorized by Stantec is forbidden.

Consultants

Legend

Notes

Revision By Appd. YY.MM.DD

1 ISSUED FOR TENDER LAF NH 13.07.19
 Issued By Appd. YY.MM.DD

File Name: 115612209_E22.dwg TS CC LAF 13.07.19
 Dwn. Chkd. Dsgn. YY.MM.DD

Permit-Seal

Client/Project

CMHC SCHL
 GRANVILLE ISLAND OFFICE
 GRANVILLE ISLAND
 HEALTH & SAFETY UPGRADE
 Vancouver BC Canada

Title

LUMINAIRE
 INSTALLATION DETAILS

Project No.
 115612209

Scale
 NTS

Drawing No.

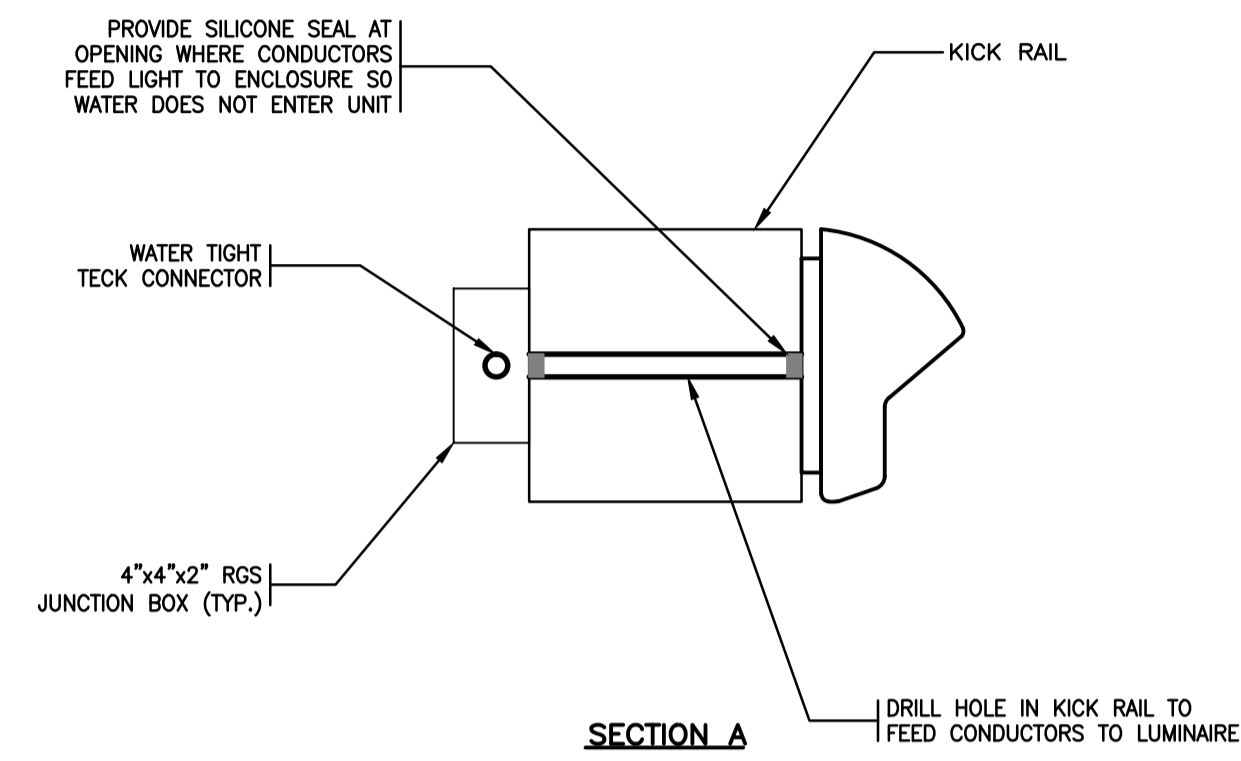
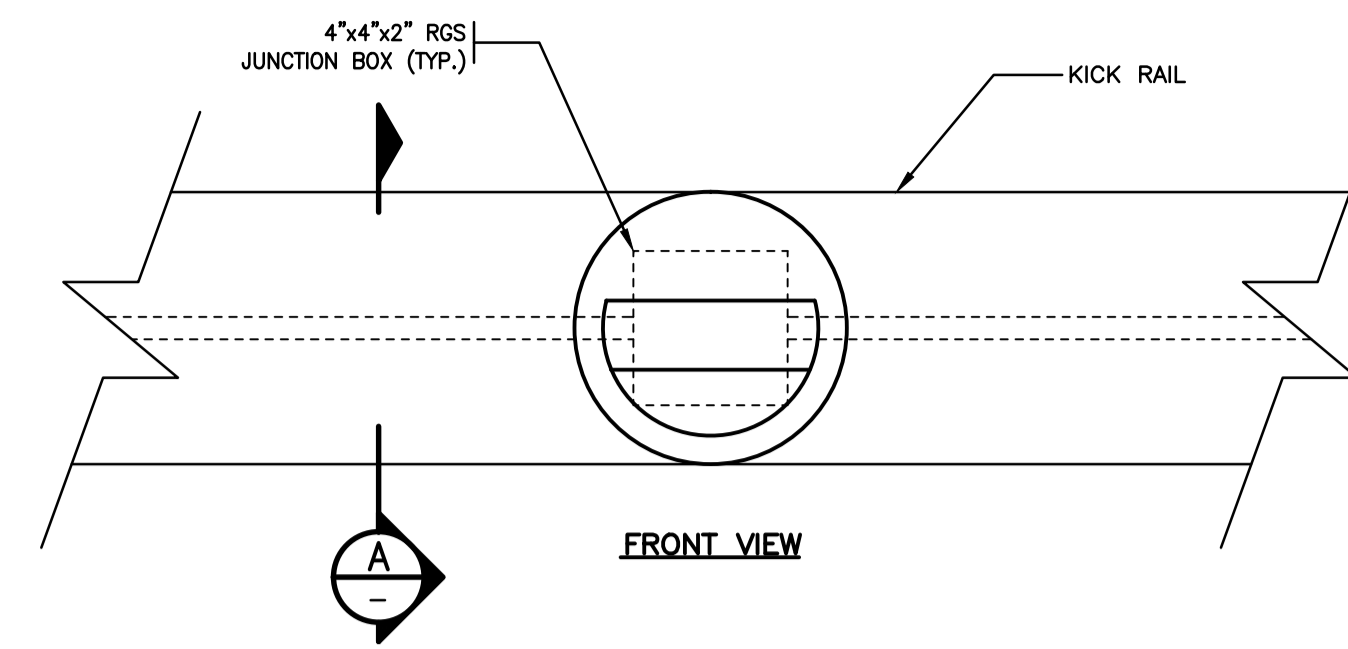
Sheet

Revision

E22

of

-



**STEP LIGHT TYPE 'C'
 INSTALLATION DETAIL**
 N.T.S.

REFER TO DRAWING E00
 FOR LEGEND, COLOUR CONDUCTOR
 CODE AND SUPPLEMENTAL SPECIFICATIONS