

RETURN BIDS TO:
RETOURNER LES SOUMISSIONS À:
Bid Receiving Public Works and Government
Services Canada/Réception des soumissions Travaux
publics et Services gouvernementaux Canada
1713 Bedford Row
Halifax, N.S./Halifax, (N.É.)
B3J 1T3
Bid Fax: (902) 496-5016

SOLICITATION AMENDMENT
MODIFICATION DE L'INVITATION

The referenced document is hereby revised; unless otherwise
indicated, all other terms and conditions of the Solicitation
remain the same.

Ce document est par la présente révisé; sauf indication contraire,
les modalités de l'invitation demeurent les mêmes.

Comments - Commentaires

Vendor/Firm Name and Address
Raison sociale et adresse du
fournisseur/de l'entrepreneur

Issuing Office - Bureau de distribution
Acquisitions
1713 Bedford Row
Halifax, N.S./Halifax, (N.É.)
B3J 3C9

Title - Sujet CCGS SIGMA REFIT	
Solicitation No. - N° de l'invitation F5561-135236/A	Amendment No. - N° modif. 001
Client Reference No. - N° de référence du client F5561-13-5236	Date 2013-07-29
GETS Reference No. - N° de référence de SEAG PW-\$HAL-403-9035	
File No. - N° de dossier HAL-3-71080 (403)	CCC No./N° CCC - FMS No./N° VME
Solicitation Closes - L'invitation prend fin at - à 02:00 PM on - le 2013-08-06	Time Zone Fuseau horaire Atlantic Daylight Saving Time ADT
F.O.B. - F.A.B. Plant-Usine: <input type="checkbox"/> Destination: <input checked="" type="checkbox"/> Other-Autre: <input type="checkbox"/>	
Address Enquiries to: - Adresser toutes questions à: Brow, Theresa	Buyer Id - Id de l'acheteur hal403
Telephone No. - N° de téléphone (902) 496-5166 ()	FAX No. - N° de FAX (902) 496-5016
Destination - of Goods, Services, and Construction: Destination - des biens, services et construction:	

Instructions: See Herein

Instructions: Voir aux présentes

Delivery Required - Livraison exigée	Delivery Offered - Livraison proposée
Vendor/Firm Name and Address Raison sociale et adresse du fournisseur/de l'entrepreneur	
Telephone No. - N° de téléphone Facsimile No. - N° de télécopieur	
Name and title of person authorized to sign on behalf of Vendor/Firm (type or print) Nom et titre de la personne autorisée à signer au nom du fournisseur/ de l'entrepreneur (taper ou écrire en caractères d'imprimerie)	
Signature	Date

APPENDICE 1 À L'ANNEXE « F » -**FEUILLE DE RENSEIGNEMENTS SUR LES PRIX****PRICING DATA SHEET**

Item	Description	Labour	Material	Total
HD-01	Services Electrical Power per Kwh \$_____ Gangways per day \$_____ Garbage Removal per day \$_____ Shelter/Enclosure per day \$_____ Sea Trail per hour \$_____	\$	\$	\$
HD-02	AMARRAGE ET DÉSAMARRAGE	\$	\$	\$
HD-03	PEINTURE Price per m² \$_____	\$	\$	\$
ED-01	SYSTÈME DE DIRECTION HYDRAULIQUE	\$	\$	\$
ED-02	COMMANDES HYDRAULIQUES	\$	\$	\$
ED-03	TAQUETS DE SUPPORT EN A	\$	\$	\$
ED-04	ED-04 FENÊTRE ARRIÈRE DE LA TIMONERIE 26	\$	\$	\$
ED-05	Anodes	\$	\$	\$
ED-06	COLLECTEUR DU CIRCUIT CARBURANT	\$	\$	\$
ED-07	VANNE D'ÉVACUATION DES EAUX USÉES EN Y (SUITE)	\$	\$	\$
	Total Known Work Price			\$

HD-03 PAINTING

Hull Above Water Line Item

Section 5 – Gelcoat is being change to AwlGrip

From Gelcoat (Red) to AWLGrip (Red)

From Gelcoat (White) to AWLGrip (White)

From Gelcoat (Black) to AWLGrip (Black)

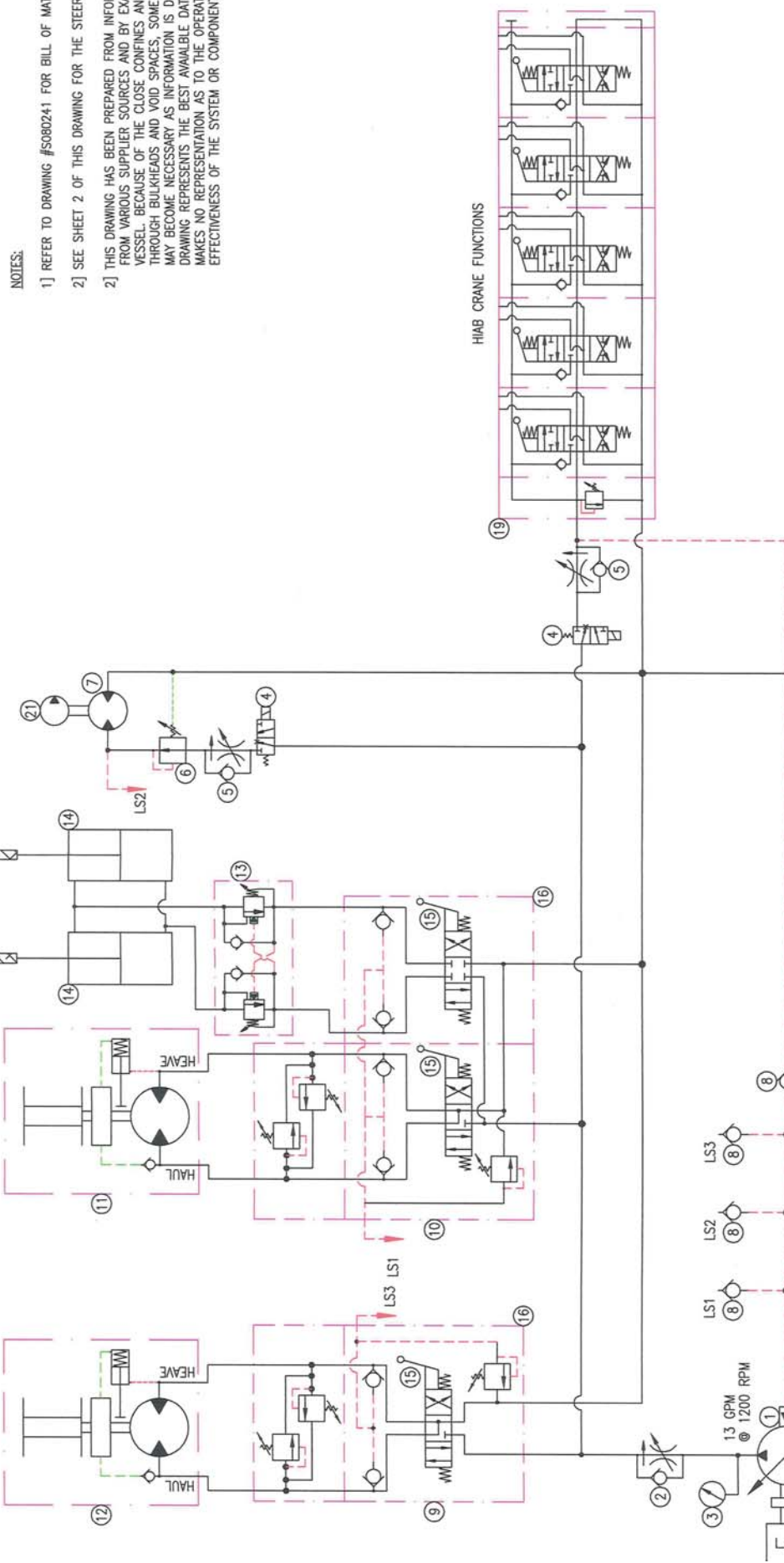
We are forwarding a copy of the Hydraulic Schematics for your information.

TH2

TH3

A-FRAME

WATER PUMP



HIAB CRANE FUNCTIONS



TRC hydraulics inc.
7 Mosher Drive
Dartmouth NS B3B 1L8
(902) 468-4805

NOTES:

- 1] REFER TO DRAWING #S080241 FOR BILL OF MATERIAL
- 2] SEE SHEET 2 OF THIS DRAWING FOR THE STEERING SYSTEM DETAILS
- 2] THIS DRAWING HAS BEEN PREPARED FROM INFORMATION GATHERED FROM VARIOUS SUPPLIER SOURCES AND BY EXAMINATION OF THE VESSEL. BECAUSE OF THE CLOSE CONFINES AND PIPING PASSAGES THROUGH BULKHEADS AND VOID SPACES, SOME DRAWING CHANGES MAY BECOME NECESSARY AS INFORMATION IS DEVELOPED. THIS DRAWING REPRESENTS THE BEST AVAILABLE DATA AT THIS TIME. TRC MAKES NO REPRESENTATION AS TO THE OPERATION OR EFFECTIVENESS OF THE SYSTEM OR COMPONENTS USED.

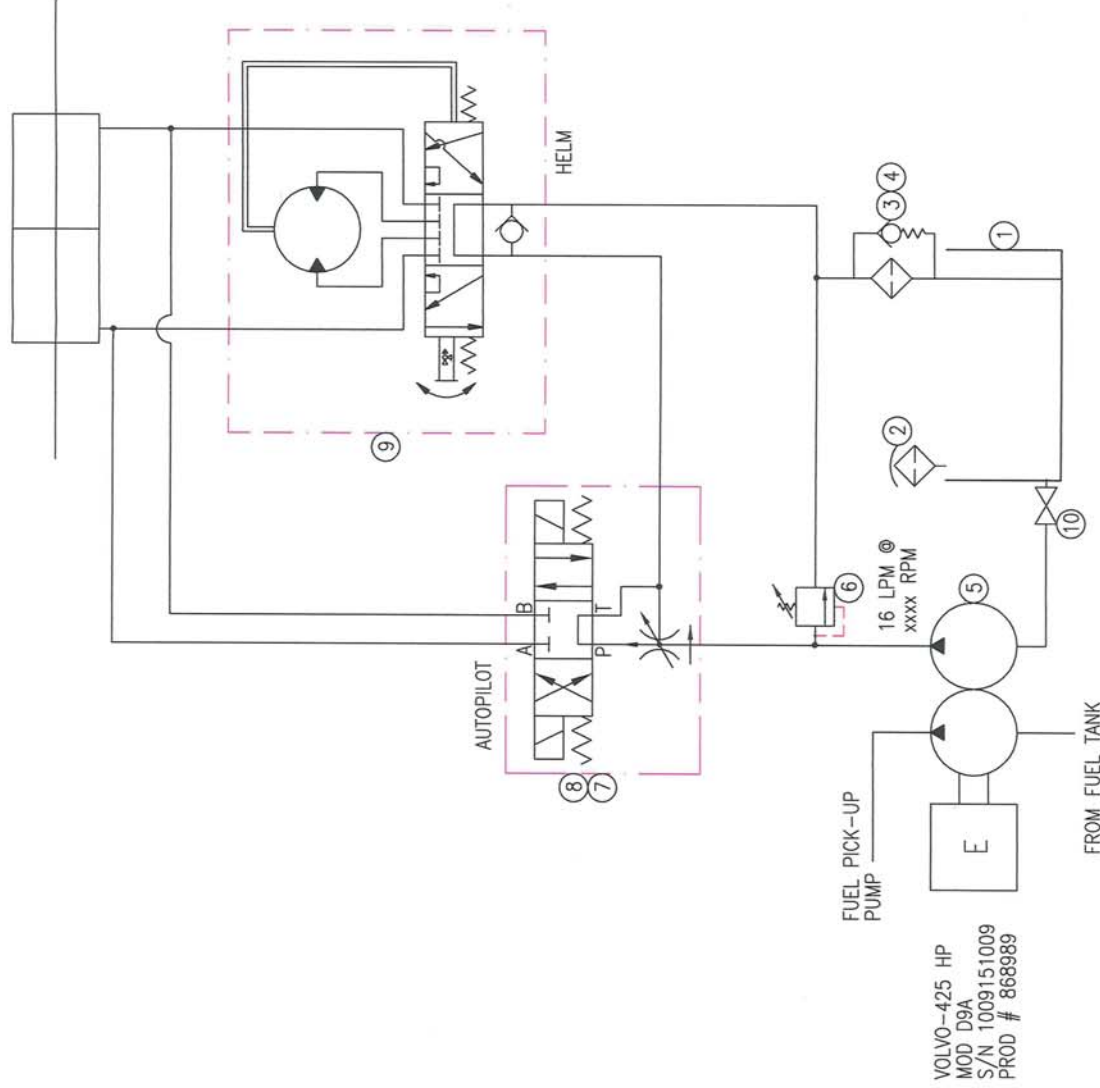
DRAWN	JP	TITLE	HYDRAULIC SCHEMATIC DRAWING
CHECKED	GS	PROJECT	MAIN HYDRAULIC SYSTEM
SIZE	SB	CLIENT	DEPARTMENT OF FISHERIES & OCEANS
SHEETS		DARTMOUTH NOVA SCOTIA CANADA	
1 OF 2		PROJECT NUMBER	S080240
DRAWING SCALE		DRAWING NUMBER	
		DATE	
		FILE NUMBER	
		REVISION	0

2

3

4

STEERING CYLINDER



ISSUE / REVISIONS

ZONE	REV	DESCRIPTION	DATE	BY	APPR
---	0	SUBMITTED FOR APPROVAL	X		

NOTES:

1] THIS DRAWING HAS BEEN PREPARED FROM A VISUAL EXAMINATION OF THE INSTALLATION, AND REPRESENTS THE BEST AVAILABLE DATA THAT COULD BE OBTAINED. TRC MAKES NO REPRESENTATIONS AS TO THE OPERATION OR EFFECTIVENESS OF THE SYSTEM OR COMPONENTS USED.

2] SOME COMPONENTS COULD NOT BE IDENTIFIED IN SITU AND MUST BE REMOVED AND EXAMINED TO CONCLUSIVELY DETERMINE THE MAKE, MODEL NUMBER, AND FUNCTION

3] ITEM #5 COMPLETE MODEL CODE
8694974505 [016217] 12.04 204534502

#	QTY	DESCRIPTION	PART/MOD NUMBER	MAKE
10	1	VALVE, BALL	TBD	TBD
9	1	MOTOR, STEERING	200-0012-002	EATON
8	1	VALVE, AUTOPILOT	D1VM009CNUWM	PARKER
7	1	AUTOPILOT ASSEMBLY	IC-3204-24	HYD. SYS.
6	1	VALVE, RELIEF	TBD	OLEOSTAR
5	1	PUMP, HYDRAULIC	8694974505	VOLVO
4	1	ELEMENT, FILTER, 10µM	SF8520	STAUFF
3	1	FILTER, RETURN	SAF-07-25-1	STAUFF
2	1	FILLER/BREATHER	SMBB-80	STAUFF
1	1	RESERVOIR	6 USG / 23L	CUSTOM

BILL OF MATERIAL

TOLERANCES UNLESS OTHERWISE SPECIFIED

1. DIMENSIONS IN INCHES.
2. 4 DECIMAL PLACES ± .0010
3. 3 DECIMAL PLACES ± .005
4. 2 DECIMAL PLACES ± .01
5. FRACTIONS ± 1/32
6. ANGLES ± .5°
7. ECCENTRICITY .005 MAX
8. REMOVE SHARP EDGES .015 MAX
9. SURFACE ROUGHNESS 125 MICRORINCHES MAX
10. INSIDE CORNERS R.010 MAX



TRC hydraulics inc.
7 Mosher Drive
Dartmouth NS B3B 1L8
(902) 488-4605

DRAWN	JP	TITLE
CHECKED	GS	HYDRAULIC SCHEMATIC DRAWING
SHEET SIZE	B	PROJECT SIGMA T
SHEETS	2 OF 2	CLIENT DEPARTMENT OF FISHERIES AND OCEANS
DRAWING NUMBER	I-74517	DARTMOUTH NOVA SCOTIA CANADA
FILE NUMBER	S080240	REVISION
DATE	12 SEPTEMBER 2008	0
NTS	12 SEPTEMBER 2008	qs08-ip126-hs-01.02.0

#	DIMENSION/SIZE/TYPE	MODEL/PART NUMBER	MAKE
32	X	X	X
31	X	X	X
30	X	X	X
29	X	X	X
28	X	X	X
27	X	X	X
26	X	X	X
25	X	SMBB-80-S-10-0-C-S080-0	STAUFF
24	Ø10=75	SF6721	STAUFF
23	X	SSF120-25-1	STAUFF
22	X	2BVL-2020-B	STAUFF
21	X	12A240043P0643608	PACER
20	X	ALUMINUM	CUSTOM
19	X	017T	HIAB
18	X	250 FT/LB - 24VDC	OGURA
17	X	9235-SF-1280	PITTS
16	X	S10	WALVOIL
15	X	AL01/M10x200	WALVOIL
14	X	CL-2532	X
13	X	VODL/SC38/TR.S.P4/SAE	OLEOSTAR
12	S/N 015.201	TH2-CC.0.0	ROTZLER
11	S/N 015.634	TH3.CW.0	ROTZLER
10	DL58/2/AN[G3]/7S8LF3/6V8LF3.P3[G3]/RF-SAE10		WALVOIL
9	DL58/1/AN[G3]/7Q8LF3.P3[G3]/RF-SAE10		WALVOIL
8	X	CVT-03-A1	HYSTAR
7	X	MG-20	PARKER
6	X	RP10A-0S2B-K11	OLEOSTAR
5	X	FPC-04-NPT	HYSTAR
4	X	DFE052/3A-18ESW201-24VDC-SAE-CVN	WALVOIL
3	2 1/2" LIQUID FILLED STEM MOUNT	SPG63-03000-S	STAUFF
2	30 GPM/3/4 NPT PORTS	FRIA-30-H6P	SNAP-TITE
1	PRES COMP/LOAD SENSE	MA10VS045DFR-31L-PKC62N00	METARIS
#	DATE	REVISION	

CONFIDENTIAL

THIS DRAWING IS THE PROPERTY OF TRC HYDRAULICS INC. AND CONTAINS PROPRIETARY INFORMATION. PUBLICATION, REPRODUCTION OR DISTRIBUTION OF THIS DRAWING, IN WHOLE OR IN PART WITHOUT WRITTEN CONSENT IS PROHIBITED. ALL RIGHTS RESERVED.

#	QTY	DESCRIPTION	I.D. #	SPECIFICATION / DETAIL / COMMENTS
32	X		X	X
31	X		X	X
30	X		X	X
29	X		X	X
28	X		X	X
27	X		X	X
26	X		X	X
25	1	FILLER/BREATHER	X	BAYONET STYLE
24	1	ELEMENT, RETURN FILTER	X	10 µM PAPER
23	1	FILTER, RETURN	X	SPIN-ON
22	1	VALVE, BALL	X	600 WOG
21	1	PUMP, WATER	X	X
20	1	RESERVOIR, HYDRAULIC OIL	X	70L, ALUMINUM
19	1	CRANE, KNUCKLE BOOM	X	017T
18	1	CLUTCH, SOLENOID	X	250 FT/LB 24 VDC
17	1	DRIVE LINE	X	X
16	2	BRACKET, DIRECTIONAL VALVE	X	X
15	3	HANDLE, DIRECTIONAL VALVE	X	X
14	2	CYLINDER, HYDRAULIC	X	X
13	1	VALVE, COUNTERBALANCE	X	X
12	1	WINCH	X	4500# MAXIMUM BARE DRUM
11	1	WINCH	X	7250# MAXIMUM BARE DRUM
10	1	VALVE, DIRECTIONAL	X	2-SPOOL LOAD SENSING PROPORTIONAL
9	1	VALVE, DIRECTIONAL	X	1-SPOOL LOAD SENSING PROPORTIONAL
8	4	VALVE, CHECK	X	3/8" NPT
7	1	MOTOR, HYDRAULIC	X	X
6	1	VALVE, PRESSURE REDUCING	X	X
5	2	VALVE, FLOW CONTROL	X	PRESSURE COMPENSATED
4	2	VALVE, SELECTOR	X	3/2 - 24 VDC
3	1	GAUGE, PRESSURE	X	3000 PSI
2	1	VALVE, FLOW CONTROL	X	PRESSURE COMPENSATED
1	1	PUMP, HYDRAULIC	X	45 CC/REVOLUTION
TITLE			DRAWING REF	BILL OF MATERIAL
PROJECT			S080240-SHT 1/HYDRAULIC SCHEMATIC	
CLIENT			SIGMA T HYDRAULIC SYSTEM	
BY			DEPARTMENT OF FISHERIES & OCEANS	
DATE			DARTMOUTH NOVA SCOTIA CANADA	
DWG. NO.			FILE: qs08-jp151-bm.01.01.0	REV 0
SHT			080910	1/1



DARTMOUTH, NOVA SCOTIA
CANADA
902-468-4605