

## ANNEX A

### PROJECT BRIEF & SCOPE OF WORK

#### OTENTIKS INSTALLATION, JASPER N.P.

##### INTRODUCTION

Select sites from across the country have been chosen to participate in the 100 Unit Project and are receiving Parks Canada's exclusive diversified accommodation product; the oTENTik tent. The expectation was to launch this new and exciting opportunity by the spring of 2013. Jasper Field Unit is one of the selected sites. Whistler Campground was chosen as the site for installing 10 oTENTik units. See appendices A, B & C for location map, site plan and site specific details respectively.

##### DESCRIPTION OF THE oTENTik

The oTENTik is Parks Canada's national accommodation product and is manufactured by Yourte.ca. The tent resembles a cross between an A-frame cabin and a prospector tent but offers a higher level of comfort. The oTENTik is a temporary structure with canvas-like material on the walls and roof and has a raised wooden floor. There is a large living area, separated from the sleeping area by a set of curtains. Beds are arranged to provide some privacy as well as allowing for storage space underneath. The oTENTik can comfortably accommodate up to six people and allows Parks Canada to offer a "turn-key" camping experience.

Further to the photos below, see Appendix C for detailed structural details.

##### Photographs of the oTENTik



**Scope of Work**  
**for**  
**Site Specific Implementation**

**SITE PREPARATION**

1. Remove existing timber in the ground which outlines existing tent pads. If pressure treated, timber is to be disposed of at a suitable disposal facility outside of the Park. If the timber is not pressure treated it can go to the Transfer Station burn pile (8 km east of the site on Hwy 16).
2. Rough grade and level locations for the 2'x2', 2"- thick patio stones that will support the twelve to fifteen 6"x6" support posts.
3. Install temporary erosion and sediment control measures if required.
4. Removal of trees as required to accommodate structures. Stumps to be cut at ground level. Tree removal permit must be obtained from Parks Canada.

**CONSTRUCTION / ASSEMBLY OF "oTENTIK" UNITS**

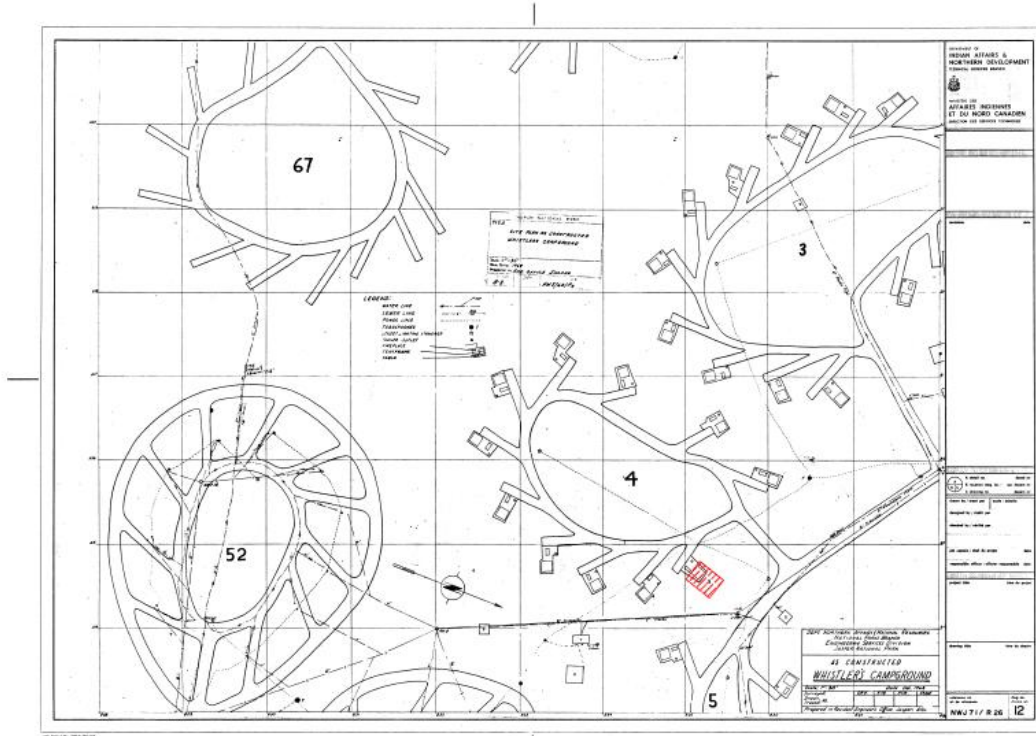
1. Installation Package and Addendum is available at the following link:  
<ftp://external:external@pcan2.ca>. From here scroll down almost to the bottom to the file labelled "otentiks – keep until Sept. 20, 2013"
2. Factory representatives may be able to provide 3 days of on-site training on the set-up/install of the first unit.
3. The Contractor is responsible for the transportation of the oTENTik packages from the Parks Canada operations compound to the construction site.
4. Floor/base is supported and leveled by fifteen 6"x6" post on 2'x2' concrete patio stones. Contractor must supply patio stones.
5. Assemble one oTENTik unit per site as per the Installation manual. Exact orientation will be identified by the Parks Canada representative. (Estimated time to assemble one unit is 3 days with a crew of 3)
6. The deck package that comes with each unit is 14' x 4'.

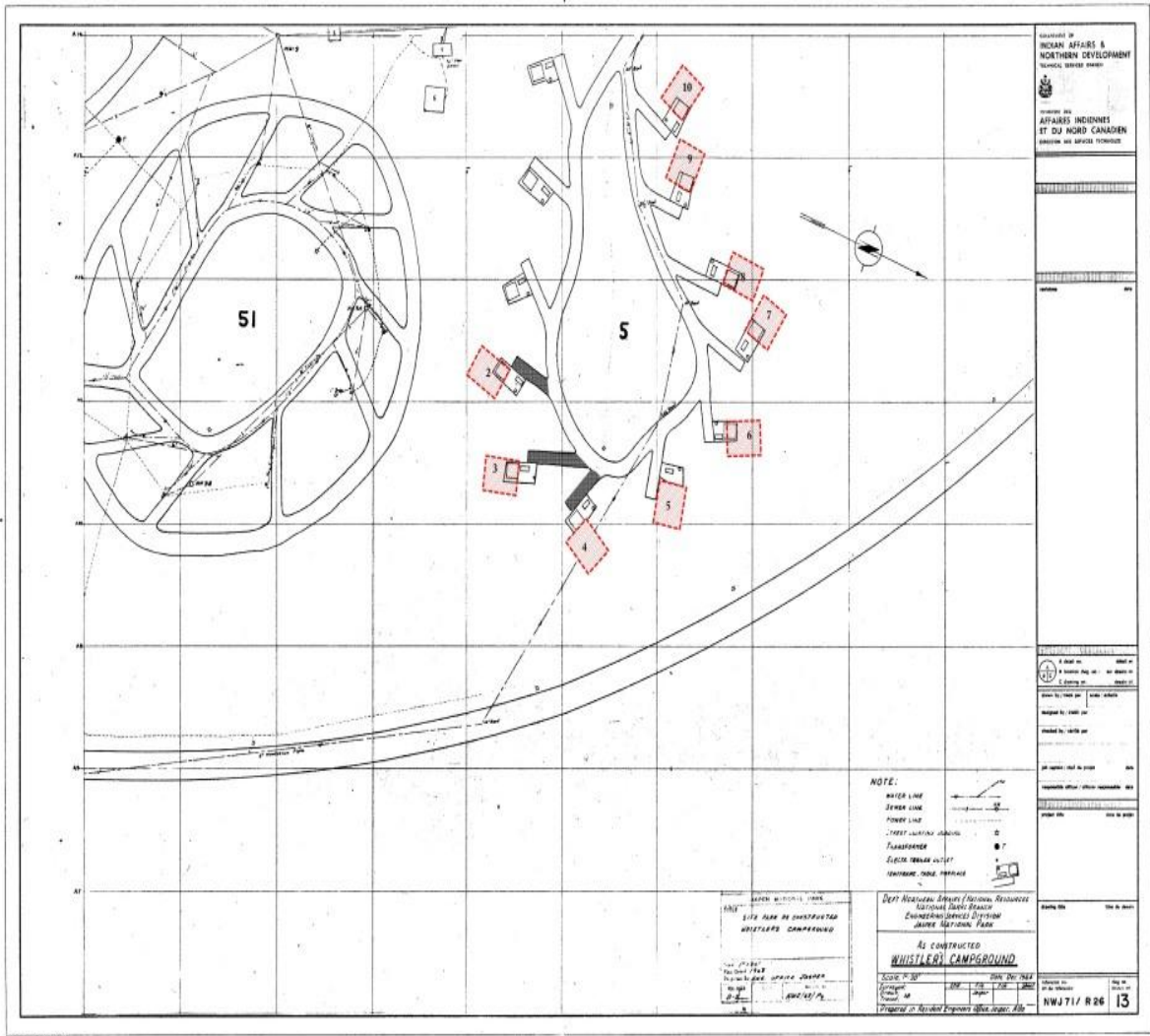
**General site clean-up.**

If required, restoration of areas affected by construction will be done through grading and application of Terraseeding™ compost and seed mix. This will be considered additional to the contract and will be dealt with through a change order process.

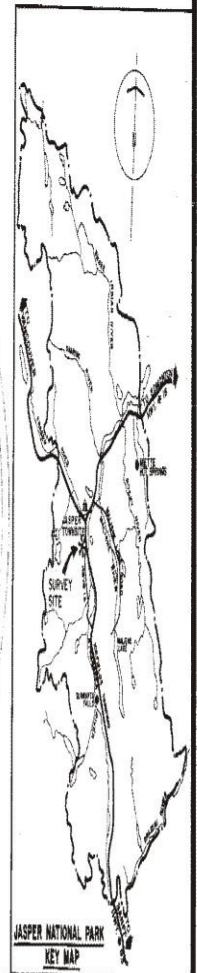
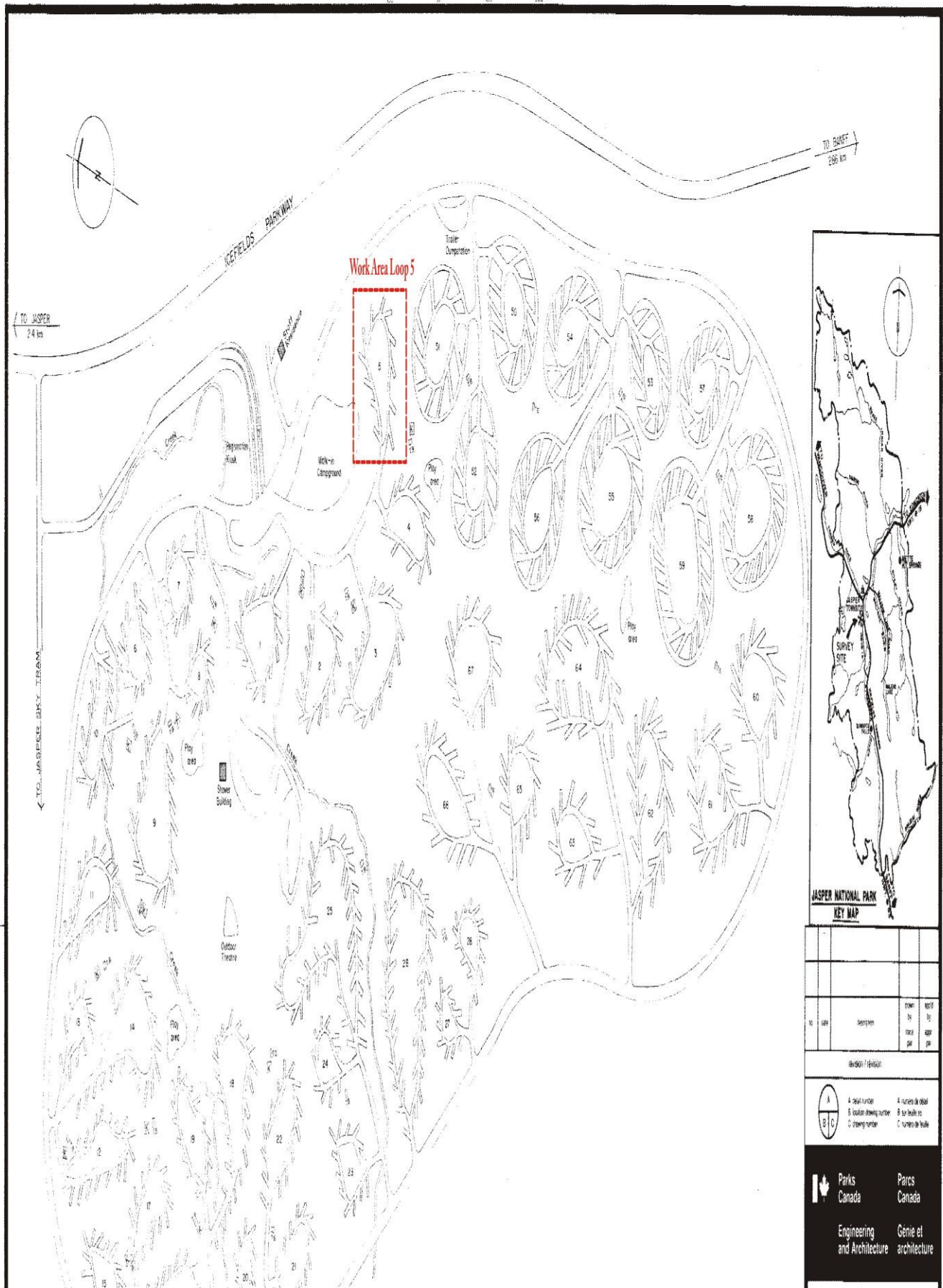
# ANNEX B

## SITE LAYOUTS Loops 4, 5, and Overview









JASPER NATIONAL PARK KEY MAP			
1			
2			
3			
4			
5			
6			
7			
8			
9			
10	100	200	300
11	400	500	600
12	700	800	900
13	1000	1100	1200

Version / Version

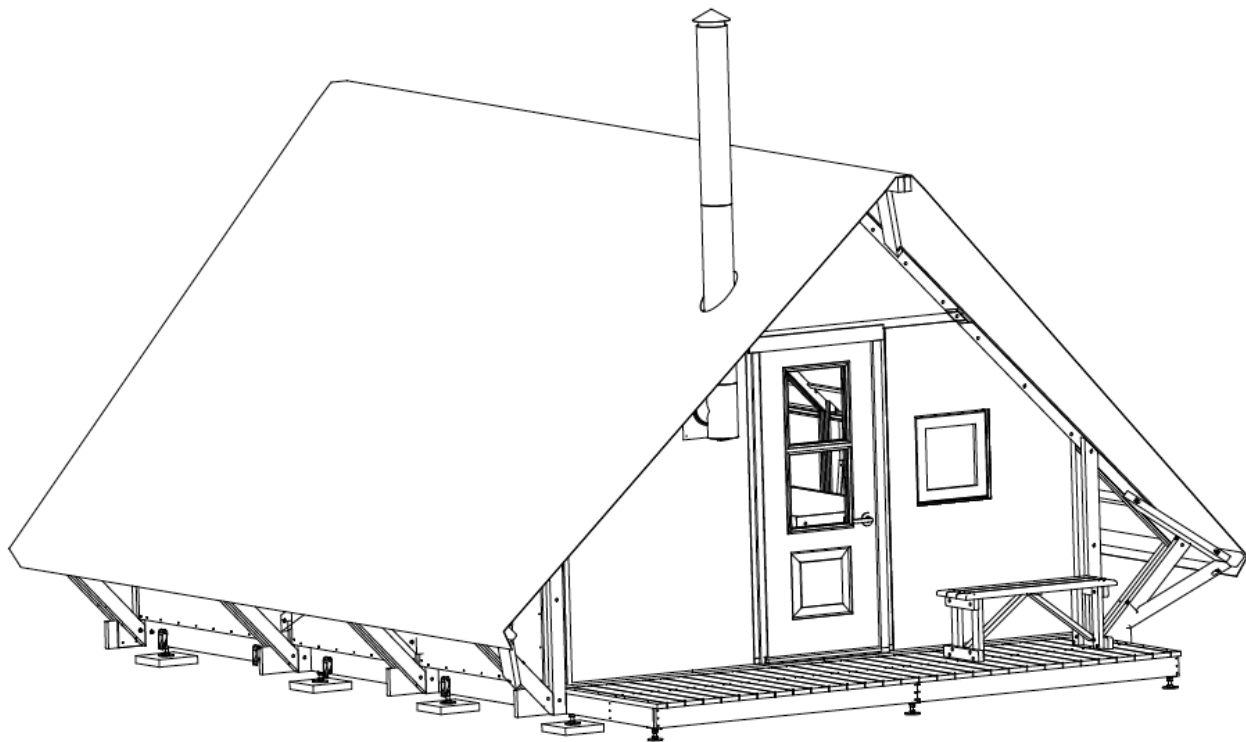
A Field number  
 B Location drawing number  
 C Grouping number  
 4 Survey detail  
 5 Top feature  
 6 Survey detail

Annex C  
Structural Details



## Product Specifications

<b>Maximum capacity:</b>	6 adults
<b>Dimensions:</b>	
The total footprint of the PAC on the ground 5.9 x 7.3 meters (19 1/2 x 24 feet)	42.5 m <sup>2</sup> (456 feet <sup>2</sup> )
The inside area of the PAC 4.3 x 5.3 meters (14 x 17 1/2 feet)	22.8 m <sup>2</sup> (245 feet <sup>2</sup> )
The living area represents 62% of the inside area 4.3 x 3.4 meters (14 x 11 feet)	14.1 m <sup>2</sup> (153 feet <sup>2</sup> )
The surface of the "dorm" 4.3 x 2 meters (14 x 6 1/2 feet)	8.6 m <sup>2</sup> (92 feet <sup>2</sup> )
The surface of the deck 4.3 x 1.2 meters (14 x 4 feet)	5.1 m <sup>2</sup> (56 feet <sup>2</sup> )
<b>Characteristics:</b>	
• Flysheet	
• Insulation (4 season version)	
○ RSI (R) factor for the roof and floor	2 (11)
○ RSI (R) factor for the walls	1.4 (8)
• Exterior and interior fabrics are fire and UV rays resistant. No sewing on the exterior fabric. Lifetime of the exterior fabric is 15 years and up, depending on the location.	
• Transitec flooring, 0.35 mm wear layer (optional).	
• Jotul <b>cast iron</b> wood stove. Chimney Excel ULCS-629 (optional).	
• The mattresses are foam (high density) covered with a waterproof fabric used for commercial use (Vintex).	
• Larch	deck



No.	DATE	PAR	DESCRIPTION
<b>REVISIONS</b>			
<b>NOTES ET TOLÉRANCES GÉNÉRALES/NOTES AND GENERAL TOLERANCES</b>			
<p>PROFIL: ANGELE INC. (PROFIL: ANGELE INC.)</p> <p>REVISIONS: (REVISIONS: )</p> <p>DATE: (DATE: )</p> <p>SCALE: (ECHELLE: )</p> <p>DESIGNER: (CONCEPTEUR: )</p> <p>DATE: (DATE: )</p> <p>SCALE: (ECHELLE: )</p> <p>DESIGNER: (CONCEPTEUR: )</p>			

FEUILLE CROQUIS XL  
B SIZE SHEET

FEUILLE 1 DE 8

CE DOCUMENT EST LA PROPRIÉTÉ DE YOURTE CA. QUÉBEC, CANADA ET NE PEUT ÊTRE UTILISÉ SÉPARÉMENT  
DU DOCUMENT À PARTIR DU QUEL ON AOT ABUSÉ LE DROIT DE PROPRIÉTÉ DE YOURTE CA.  
THIS DOCUMENT IS THE PROPERTY OF YOURTE CA. QUEBEC, CANADA AND CANNOT BE USED SEPARATELY BY ANYONE  
FROM THE DOCUMENT FROM WHICH IT WAS DERIVED.



**PRÊT À CAMPER**  
**VUE D'ENSEMBLE**  
**ASSEMBLAGE TOTAL**

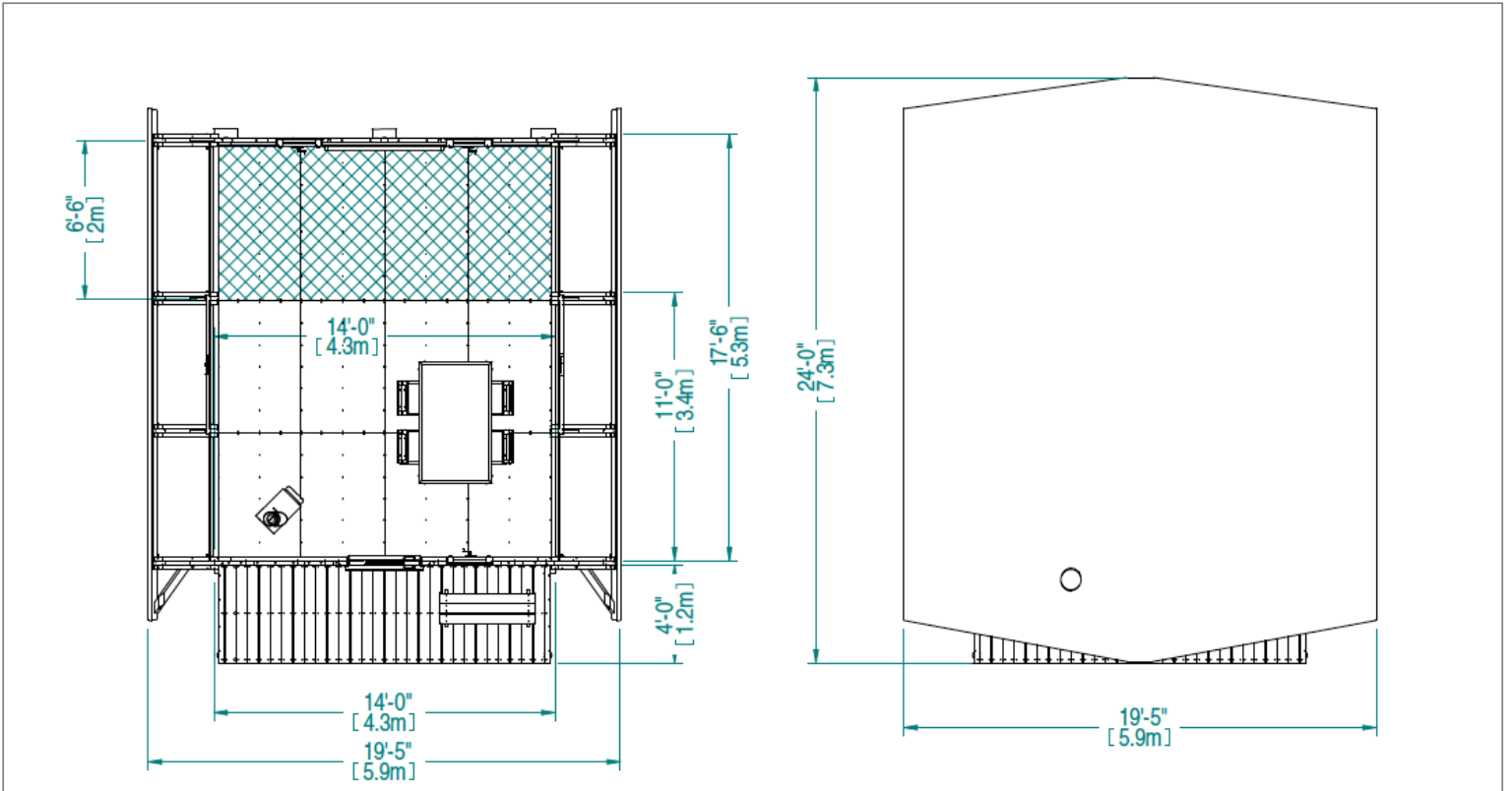
DESIGNER: <b>Christian Côté</b>	CONCEPTEUR:
FILE NO: <b>Y-T030-00-00R0.asm</b>	DATE: <b>2011-07-26</b>
SCALE: <b>N/A</b>	NO. DU DESIGN DE REFERENCE:
NO. DESIGN:	REVISION:

**Y-T030-00-00R0**

C:\Documents and Settings\Christian\My Documents\CMF-DESSIN\yourte\PRÊT A CAMPER\DESIGN\Y-T030-00-00R0.dwg







No.	DATE	PAR	DESCRIPTION
<b>REVISIONS</b>			
<b>NOTES ET TOLERANCES GÉNÉRALES/NOTES AND GENERAL TOLERANCES</b>			
<p>NOTES: - UNLESS SHOWN OTHERWISE, ALL DIMENSIONS ARE TO FACE UNLESS SPECIFIED OTHERWISE.</p> <p>NOTES: - À MOINS D'ÊTRE PRÉCISÉ AUTrement, TOUS LES DIMENSIONS SONT EN FACE À MOINS D'ÊTRE PRÉCISÉ AUTrement.</p>			



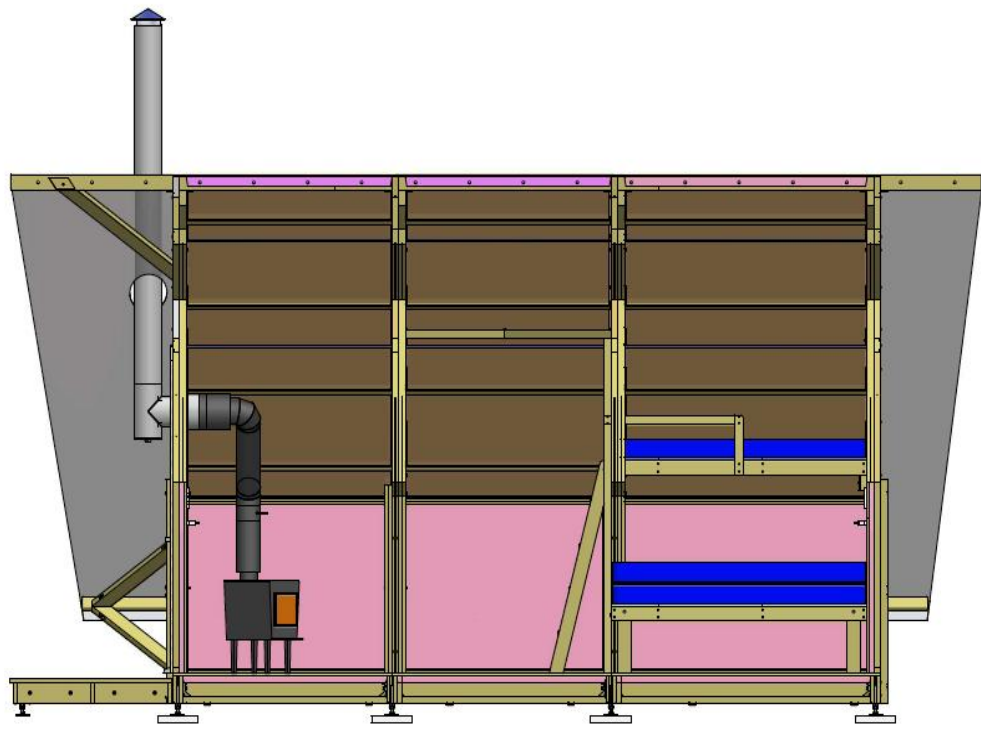
**PRÊT À CAMPER**  
**VUE D'ENSEMBLE**  
**ASSEMBLAGE TOTAL**

<small>DE DIMENSIONNER LA PROJETÉ DE TOULOUSE (LA) QUÉBEC, CANADA ET SE PEUT ÊTRE UTILISÉ DIRECTEMENT        OU INDÉPENDamment PAR UN TROISIÈME PARTI COMPARTIMENT DE TOULOUSE (LA) QUÉBEC, CANADA        WITHOUT TOULOUSE (LA) COMPARTMENT</small>	
<small>FEMELLE FORMAT B        B SIZE SHEET</small>	<small>FEUILLE 3 OF 8        SHEET 3 OF 8</small>
<small>DESIGNÉ:</small> Christian Côté	<small>CONÇU:</small>
<small>PROJET:</small> Y-T030-00-00R0.asm	<small>DATE:</small> 2011-07-26
<small>ÉCHELLE:</small> N/A	<small>NO. DU DESSIN DE RÉFÉRENCE:</small>
<small>N. DESIGN:</small>	<small>RÉVISION:</small>
<b>Y-T030-00-00R0</b>	

C:\Documents and Settings\Christian\My Documents\CMP-DESIGN\projets\PRÊT À CAMPER\DESIGN\Y-T030-00-00R0.dwg







ÉLÉVATION INTÉRIEURE

Nr.	DATE	PAR	DESCRIPTION
<b>REVISIONS</b>			
<b>NOTES ET TOLÉRANCES GÉNÉRALES/NOTES AND GENERAL TOLERANCES</b>			
<p>PROFIL: 6061-T6 ALUMINUM            FINISSEUR: ANODISÉ EN NOIR (R115)            REV. 01/11/11</p> <p>PROFIL: 6061-T6 ALUMINUM            FINISSEUR: ANODISÉ EN NOIR (R115)            REV. 01/11/11</p> <p>PROFIL: 6061-T6 ALUMINUM            FINISSEUR: ANODISÉ EN NOIR (R115)            REV. 01/11/11</p>			



PRÊT À CAMPER  
 VUE D'ENSEMBLE  
 ASSEMBLAGE TOTAL

ÉCHELLE FORMAT: A3  
 1/8" = 1'-0"

DESIGNÉ: <b>Christian Côté</b>	CONÇU:
PROJÉTÉ: <b>Y-T030-00-00F0.asm</b>	DATE: <b>2011-07-26</b>
REVÊTUE: <b>N/A</b>	NO. DU DESSIN DE RÉFÉRENCE:
TR. DESSIN:	REVISION:
<b>Y-T030-00-00R0</b>	







## Annex D

### Environmental Assessment

The Environmental Assessment is available at the following FTP site. Please follow the instructions below to access this.

- I. Right click on the Start Button
- II. Select Explore or Open Windows Explorer (xp or win7)
- III In the address bar type: **ftp://external:external@pcan2.ca**
- IV Scroll down to the folder labelled "*Jasper National Park*", click on it and click on the sub folder labelled "*Jasper otentik documents (Keep until September 20, 2013)*". Date is 08/08/2013.

## Annex E

### Installation and Addendum Instructions

The installation and addendum instructions are available at the following FTP site. Please follow the instructions below to access this.

- III. Right click on the Start Button
- IV. Select Explore or Open Windows Explorer (xp or win7)
- III In the address bar type: **ftp://external:external@pcan2.ca**
- IV Scroll down to the folder labelled "*Jasper National Park*", click on it and click on the sub folder labelled "*Jasper otentik documents (Keep until September 20, 2013)*". Date is 08/08/2013.

Please contact Margot Simpson at 780-852-6255 if you are having difficulties accessing this site.