

**RETURN BIDS TO:**  
**RETOURNER LES SOUMISSIONS À:**  
**Bid Receiving - PWGSC / Réception des soumissions -**  
**TPSGC**  
**11 Laurier St. / 11, rue Laurier**  
**Place du Portage , Phase III**  
**Core 0A1 / Noyau 0A1**  
**Gatineau, Québec K1A 0S5**  
**Bid Fax: (819) 997-9776**

**SOLICITATION AMENDMENT**  
**MODIFICATION DE L'INVITATION**

The referenced document is hereby revised; unless otherwise indicated, all other terms and conditions of the Solicitation remain the same.

Ce document est par la présente révisé; sauf indication contraire, les modalités de l'invitation demeurent les mêmes.

**Comments - Commentaires**

**Vendor/Firm Name and Address**  
**Raison sociale et adresse du**  
**fournisseur/de l'entrepreneur**

**Issuing Office - Bureau de distribution**  
Ship Refits and Conversions / Radoubss et  
modifications de navires and / et  
11 Laurier St. / 11, rue Laurier  
6C2, Place du Portage  
Gatineau, Québec K1A 0S5

<b>Title - Sujet</b> Martha Black Speed Crane Derrick	
<b>Solicitation No. - N° de l'invitation</b> F3012-13INB0/A	<b>Amendment No. - N° modif.</b> 004
<b>Client Reference No. - N° de référence du client</b> F3012-13INB0	<b>Date</b> 2013-08-12
<b>GETS Reference No. - N° de référence de SEAG</b> PW-\$\$MD-018-23906	
<b>File No. - N° de dossier</b> 018md.F3012-13INB0	<b>CCC No./N° CCC - FMS No./N° VME</b>
<b>Solicitation Closes - L'invitation prend fin</b> <b>at - à 02:00 PM</b> <b>on - le 2013-08-27</b>	<b>Time Zone</b> <b>Fuseau horaire</b> Eastern Daylight Saving Time EDT
<b>F.O.B. - F.A.B.</b> <b>Plant-Usine:</b> <input type="checkbox"/> <b>Destination:</b> <input type="checkbox"/> <b>Other-Autre:</b> <input type="checkbox"/>	
<b>Address Enquiries to: - Adresser toutes questions à:</b> Vandal, Paul	<b>Buyer Id - Id de l'acheteur</b> 018md
<b>Telephone No. - N° de téléphone</b> (819) 956-0645 ( )	<b>FAX No. - N° de FAX</b> (819) 956-0897
<b>Destination - of Goods, Services, and Construction:</b> <b>Destination - des biens, services et construction:</b>	

**Instructions: See Herein**

**Instructions: Voir aux présentes**

<b>Delivery Required - Livraison exigée</b>	<b>Delivery Offered - Livraison proposée</b>
<b>Vendor/Firm Name and Address</b> <b>Raison sociale et adresse du fournisseur/de l'entrepreneur</b>	
<b>Telephone No. - N° de téléphone</b> <b>Facsimile No. - N° de télécopieur</b>	
<b>Name and title of person authorized to sign on behalf of Vendor/Firm</b> <b>(type or print)</b> <b>Nom et titre de la personne autorisée à signer au nom du fournisseur/</b> <b>de l'entrepreneur (taper ou écrire en caractères d'imprimerie)</b>	
<b>Signature</b>	<b>Date</b>

---

## BIDDERS QUESTIONS & ANSWERS

### TECHNICAL SPECIFICATIONS F3012-13INB026 WORK LOAD ON THE MAST "SPEED CRANE" SCHEDULE "A" (p. 2 of 3)

#### Q.1

Note a.

Who bears responsibility for the replacement of steel cables?

#### A.1

The contractor

#### Q.2

Note b.

Who pays the costs related to ship safety inspector?

#### A.2

The Canadian Coast Guard

#### Q.3

Note e.

Are we going to sandblast and paint completely all parts disassembled and transported shop or being cleaned by sandblasting or mechanical only rust spots or heated spots for removal?

#### A.3

Only mechanically cleans rust or heated spots for removal.

---

**Q.4**

Note m.

It is not possible to give a price copper (bushings) since we do not know the dimensions and quantity. Can you provide this information?

**A.4**

If necessary, copper bushing will be replaced, and negotiated by 1379 form PWGSC.

**Q.5**

Note n.

Can you clarify this item? Which shell is it and what is the quantity?

**A.5**

See attached plans

**Q.6**

Note o.

It is difficult to put a price on this item since we do not know the required quantity. Can you provide this information?

**A.6**

See attached plans.

Solicitation No. - N° de l'invitation

F3012-13INB0/A

Amd. No. - N° de la modif.

004

Buyer ID - Id de l'acheteur

018md

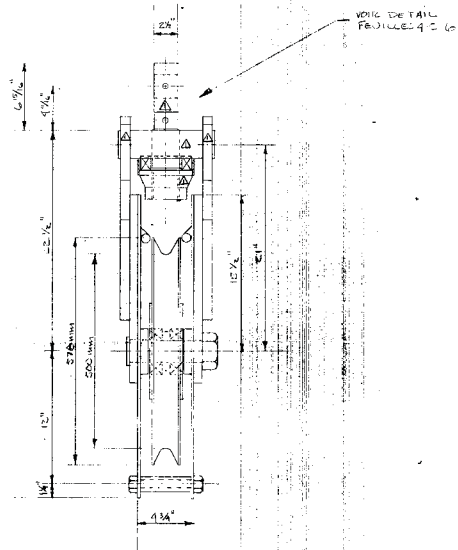
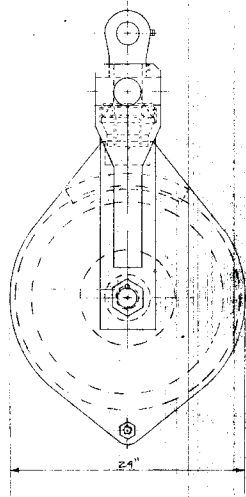
Client Ref. No. - N° de réf. du client

F3012-13INB0

File No. - N° du dossier

018mdF3012-13INB0

CCC No./N° CCC - FMS No/ N° VME




C.C.G.S. SIE WILFRED LAURIER

ITEM 15: 2500 lbs. max. load: 8.25T  
 1/2" HEAD BOX CARLOAD BLOCK  
 1/2" 1015T

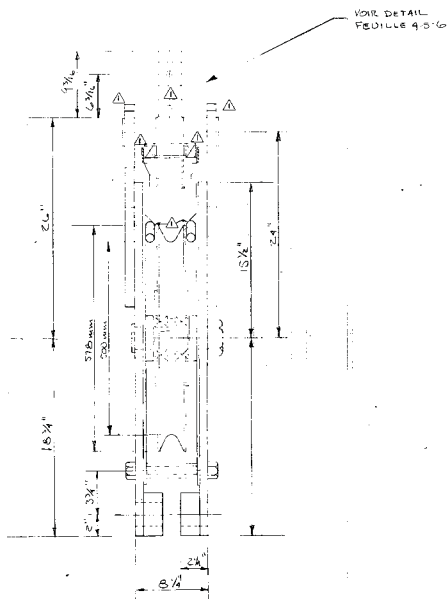
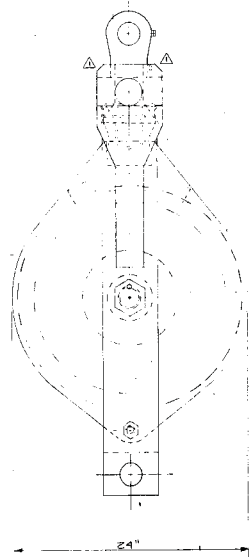
ITEM 16: 2500 lbs. max. load: 8.25T  
 1/2" HEAD BOX CARLOAD BLOCK  
 1/2" 1015T

ITEM 17: 2500 lbs. max. load: 8.25T  
 1/2" HEAD BOX CARLOAD BLOCK  
 1/2" 1015T


TEL QUE CONSTRUIT VOUS ET	
MODIFICATION: VOS REULT	NOV 85
NO	REVISION (S)
DATE	

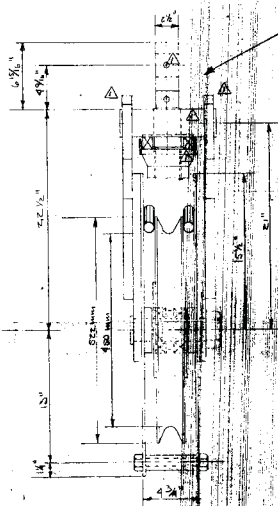

**ADS** associés inc.

100, 1010, 1020, 1030, 1040, 1050, 1060, 1070, 1080, 1090, 1100, 1110, 1120, 1130, 1140, 1150, 1160, 1170, 1180, 1190, 1200, 1210, 1220, 1230, 1240, 1250, 1260, 1270, 1280, 1290, 1300, 1310, 1320, 1330, 1340, 1350, 1360, 1370, 1380, 1390, 1400, 1410, 1420, 1430, 1440, 1450, 1460, 1470, 1480, 1490, 1500, 1510, 1520, 1530, 1540, 1550, 1560, 1570, 1580, 1590, 1600, 1610, 1620, 1630, 1640, 1650, 1660, 1670, 1680, 1690, 1700, 1710, 1720, 1730, 1740, 1750, 1760, 1770, 1780, 1790, 1800, 1810, 1820, 1830, 1840, 1850, 1860, 1870, 1880, 1890, 1900, 1910, 1920, 1930, 1940, 1950, 1960, 1970, 1980, 1990, 2000, 2010, 2020, 2030, 2040, 2050, 2060, 2070, 2080, 2090, 2100, 2110, 2120, 2130, 2140, 2150, 2160, 2170, 2180, 2190, 2200, 2210, 2220, 2230, 2240, 2250, 2260, 2270, 2280, 2290, 2300, 2310, 2320, 2330, 2340, 2350, 2360, 2370, 2380, 2390, 2400, 2410, 2420, 2430, 2440, 2450, 2460, 2470, 2480, 2490, 2500, 2510, 2520, 2530, 2540, 2550, 2560, 2570, 2580, 2590, 2600, 2610, 2620, 2630, 2640, 2650, 2660, 2670, 2680, 2690, 2700, 2710, 2720, 2730, 2740, 2750, 2760, 2770, 2780, 2790, 2800, 2810, 2820, 2830, 2840, 2850, 2860, 2870, 2880, 2890, 2900, 2910, 2920, 2930, 2940, 2950, 2960, 2970, 2980, 2990, 3000, 3010, 3020, 3030, 3040, 3050, 3060, 3070, 3080, 3090, 3100, 3110, 3120, 3130, 3140, 3150, 3160, 3170, 3180, 3190, 3200, 3210, 3220, 3230, 3240, 3250, 3260, 3270, 3280, 3290, 3300, 3310, 3320, 3330, 3340, 3350, 3360, 3370, 3380, 3390, 3400, 3410, 3420, 3430, 3440, 3450, 3460, 3470, 3480, 3490, 3500, 3510, 3520, 3530, 3540, 3550, 3560, 3570, 3580, 3590, 3600, 3610, 3620, 3630, 3640, 3650, 3660, 3670, 3680, 3690, 3700, 3710, 3720, 3730, 3740, 3750, 3760, 3770, 3780, 3790, 3800, 3810, 3820, 3830, 3840, 3850, 3860, 3870, 3880, 3890, 3900, 3910, 3920, 3930, 3940, 3950, 3960, 3970, 3980, 3990, 4000, 4010, 4020, 4030, 4040, 4050, 4060, 4070, 4080, 4090, 4100, 4110, 4120, 4130, 4140, 4150, 4160, 4170, 4180, 4190, 4200, 4210, 4220, 4230, 4240, 4250, 4260, 4270, 4280, 4290, 4300, 4310, 4320, 4330, 4340, 4350, 4360, 4370, 4380, 4390, 4400, 4410, 4420, 4430, 4440, 4450, 4460, 4470, 4480, 4490, 4500, 4510, 4520, 4530, 4540, 4550, 4560, 4570, 4580, 4590, 4600, 4610, 4620, 4630, 4640, 4650, 4660, 4670, 4680, 4690, 4700, 4710, 4720, 4730, 4740, 4750, 4760, 4770, 4780, 4790, 4800, 4810, 4820, 4830, 4840, 4850, 4860, 4870, 4880, 4890, 4900, 4910, 4920, 4930, 4940, 4950, 4960, 4970, 4980, 4990, 5000, 5010, 5020, 5030, 5040, 5050, 5060, 5070, 5080, 5090, 5100, 5110, 5120, 5130, 5140, 5150, 5160, 5170, 5180, 5190, 5200, 5210, 5220, 5230, 5240, 5250, 5260, 5270, 5280, 5290, 5300, 5310, 5320, 5330, 5340, 5350, 5360, 5370, 5380, 5390, 5400, 5410, 5420, 5430, 5440, 5450, 5460, 5470, 5480, 5490, 5500, 5510, 5520, 5530, 5540, 5550, 5560, 5570, 5580, 5590, 5600, 5610, 5620, 5630, 5640, 5650, 5660, 5670, 5680, 5690, 5700, 5710, 5720, 5730, 5740, 5750, 5760, 5770, 5780, 5790, 5800, 5810, 5820, 5830, 5840, 5850, 5860, 5870, 5880, 5890, 5900, 5910, 5920, 5930, 5940, 5950, 5960, 5970, 5980, 5990, 6000, 6010, 6020, 6030, 6040, 6050, 6060, 6070, 6080, 6090, 6100, 6110, 6120, 6130, 6140, 6150, 6160, 6170, 6180, 6190, 6200, 6210, 6220, 6230, 6240, 6250, 6260, 6270, 6280, 6290, 6300, 6310, 6320, 6330, 6340, 6350, 6360, 6370, 6380, 6390, 6400, 6410, 6420, 6430, 6440, 6450, 6460, 6470, 6480, 6490, 6500, 6510, 6520, 6530, 6540, 6550, 6560, 6570, 6580, 6590, 6600, 6610, 6620, 6630, 6640, 6650, 6660, 6670, 6680, 6690, 6700, 6710, 6720, 6730, 6740, 6750, 6760, 6770, 6780, 6790, 6800, 6810, 6820, 6830, 6840, 6850, 6860, 6870, 6880, 6890, 6900, 6910, 6920, 6930, 6940, 6950, 6960, 6970, 6980, 6990, 7000, 7010, 7020, 7030, 7040, 7050, 7060, 7070, 7080, 7090, 7100, 7110, 7120, 7130, 7140, 7150, 7160, 7170, 7180, 7190, 7200, 7210, 7220, 7230, 7240, 7250, 7260, 7270, 7280, 7290, 7300, 7310, 7320, 7330, 7340, 7350, 7360, 7370, 7380, 7390, 7400, 7410, 7420, 7430, 7440, 7450, 7460, 7470, 7480, 7490, 7500, 7510, 7520, 7530, 7540, 7550, 7560, 7570, 7580, 7590, 7600, 7610, 7620, 7630, 7640, 7650, 7660, 7670, 7680, 7690, 7700, 7710, 7720, 7730, 7740, 7750, 7760, 7770, 7780, 7790, 7800, 7810, 7820, 7830, 7840, 7850, 7860, 7870, 7880, 7890, 7900, 7910, 7920, 7930, 7940, 7950, 7960, 7970, 7980, 7990, 8000, 8010, 8020, 8030, 8040, 8050, 8060, 8070, 8080, 8090, 8100, 8110, 8120, 8130, 8140, 8150, 8160, 8170, 8180, 8190, 8200, 8210, 8220, 8230, 8240, 8250, 8260, 8270, 8280, 8290, 8300, 8310, 8320, 8330, 8340, 8350, 8360, 8370, 8380, 8390, 8400, 8410, 8420, 8430, 8440, 8450, 8460, 8470, 8480, 8490, 8500, 8510, 8520, 8530, 8540, 8550, 8560, 8570, 8580, 8590, 8600, 8610, 8620, 8630, 8640, 8650, 8660, 8670, 8680, 8690, 8700, 8710, 8720, 8730, 8740, 8750, 8760, 8770, 8780, 8790, 8800, 8810, 8820, 8830, 8840, 8850, 8860, 8870, 8880, 8890, 8900, 8910, 8920, 8930, 8940, 8950, 8960, 8970, 8980, 8990, 9000, 9010, 9020, 9030, 9040, 9050, 9060, 9070, 9080, 9090, 9100, 9110, 9120, 9130, 9140, 9150, 9160, 9170, 9180, 9190, 9200, 9210, 9220, 9230, 9240, 9250, 9260, 9270, 9280, 9290, 9300, 9310, 9320, 9330, 9340, 9350, 9360, 9370, 9380, 9390, 9400, 9410, 9420, 9430, 9440, 9450, 9460, 9470, 9480, 9490, 9500, 9510, 9520, 9530, 9540, 9550, 9560, 9570, 9580, 9590, 9600, 9610, 9620, 9630, 9640, 9650, 9660, 9670, 9680, 9690, 9700, 9710, 9720, 9730, 9740, 9750, 9760, 9770, 9780, 9790, 9800, 9810, 9820, 9830, 9840, 9850, 9860, 9870, 9880, 9890, 9900, 9910, 9920, 9930, 9940, 9950, 9960, 9970, 9980, 9990, 10000



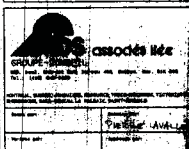
CC.G.S. SIR WILFRID LAURIER  
ITEM 15 SWL : 14.24 TON  
LOWER COMPENSATOR BLOCK  
RE: AMALW 10064 & CO LTD  
DWG No. 2M4652  
STE: 2

TEL QUE CONSTRUIT NOV. 87		MODIFICATIONS VOIR FEUILLE 10 NOV. 87	
NO	REVISION (S)	DATE	
			
<b>ADS associés inc.</b> GROUPE-CONSEIL 888, RUE D'ARCADE, 1000, MONTRÉAL, QUÉBEC H3A 2B4 TEL: 342-1111 FAX: 342-1112 ADRESSE: 888, RUE D'ARCADE, 1000, MONTRÉAL, QUÉBEC H3A 2B4			
Client: M. PIERRE LAURIE		Projet: M. PIERRE LAURIE	
Titre du projet: SPEEDCRANE CC.G.S. SIR WILFRID LAURIER			
Titre du dessin: 22 3/4" VIEW DIA. Single sheave block ITEM 15			
Échelle: NTS	Dessiné par: 30-GIE	Feuille no: ADS-2	
Date: 10/1/87	C.A.D. no:		



VOIR DETAIL  
FEUILLES 9-S-6

	TEL QUE CONSTRUIT	NOV. 87
1	MODIFICATION PAR REVILLE 456	NOV. 89
NO.	REVISION(S)	DATE



Titre du projet:

SPEED CRANE

[illegible]

Titre du dessin:

2014-10-14  
single - heavy block

12-1541

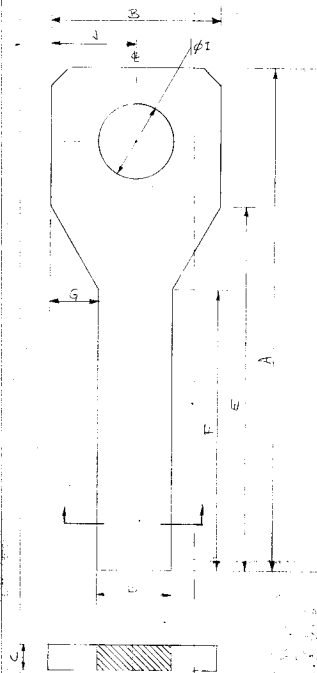
CCIG.0. SHI WILFRIED LAURENCE  
ITEM 21 SW. : 517-55  
JIB HEAD AUX. CARGO BAY  
MOIST. 5 TON.  
QTE 1

ΩΤΕ 1







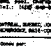
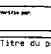
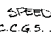
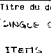
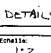
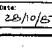









1- LIQUETEMENT LIBRE AVEC LE TIR (RE-5).  
 2- LIQUETEMENT AVEC ROULEMENT 300g.  
 3- LIQUETEMENT AVEC LA DIMENSION 11" DE LA PLAQUE D'ATTACHE.

[illegible]

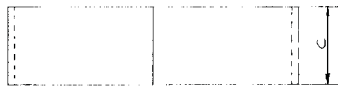
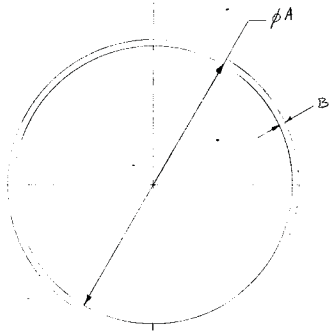
DATE	QTE	A	B	C	D	E	F	G		I	J	K
8-13 14-21	12	21"	64"	1"	3.12"	14 1/2"	10 7/8"	1.82"		3"	3 3/8"	3"
16	4	25"	5 1/4"	1"	4 1/4"	15"	11"	1.12"		4"	4 1/8"	4 1/4"

1. SYSTEME AVEC LA DISTINCTION "I" DE LA TRAVERSE DE SOUTIEN.

MATEKIAU:  $\Delta$  ALIER M. S. BH. 36

TEL QUE CONSTRUCT		NOV 89
A: <u>GRAND D'ARRE</u>		NOV 89
EXPLOITATION		NOV 89
NO	REVISION (S)	DATE
		
		
		
		
		
		
		
		
		
		
		
		
		
		
		
		
		

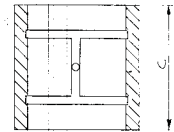
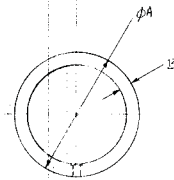
ANNEAU DE PROTECTION PIÉCE #7



MATERIAU ACIER

ITEM	B-12	15
QTE	6	2
A	42mm	42mm
B	40mm	40mm
C	1 1/4"	2"

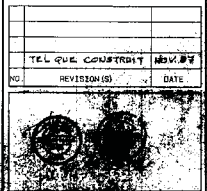
PACIER LIÈGE PIÉCE #9



MATERIAU GON METAL

ITEM	B-12	15
QTE	6	2
A	2 1/4"	3 1/4"
B	1/4"	1/4"
C	2 1/4"	4"

1. AJUSTEMENT "PRESS FIT" SUR LA TIGE (PWS)
2. AJUSTEMENT LIBRE SUR LA "PIN" (RCS)



**ADS associés inc.**  
 GROUPE-CONSEIL  
 100, RUE D'ARCADE, 100, RUE D'ARCADE, 100, RUE D'ARCADE  
 TEL: 514-350-0000

CONTRÔLE, ANALYSE, CONSULTING, TRAVAUX, TRAVAUX-ALUMINIUM, VITRIFICATION, ENVELOPPES, BÂTI-CONCRETE, L'ALUMINIUM, BÂTI-ALUMINIUM

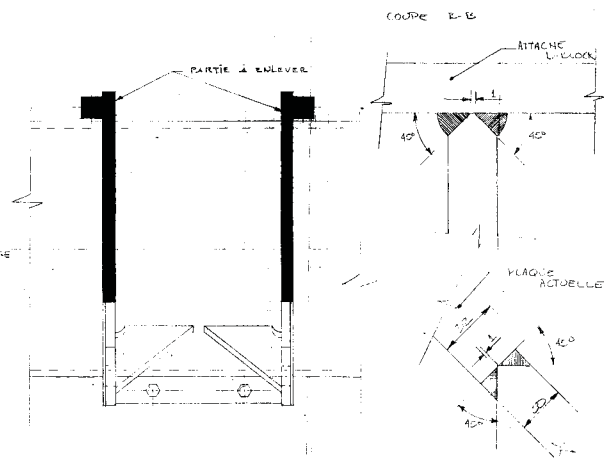
DESIGNER: SAERIE LAVALLÉE  
 CHECKER: SAERIE LAVALLÉE

Titre du projet:  
 SPEEDCRANE  
 C.C.G.S. SIR WILFRID LURIER

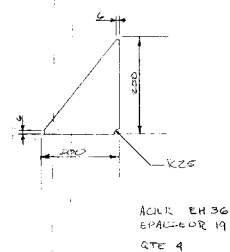
Titre du dessin:  
 "SINGLE SHEAVE" BLOCKS  
 ITB115 B-12-M-15-21  
 DETAILS

DATE	10/11/87	PROJET	ADS-6
------	----------	--------	-------

DETAILS DE GOUDAGE

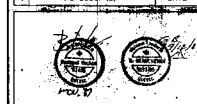


## REINFORC D'ATTACHE D'ELONG



ECHELLE 1:2

⚠	AJOUTE TOILES DE FROTTEMENT	DÉC. 87
	TEL QUE CONSTRUIT	NOV. 87
1	ATTACHES D-BLOCKS	10/11/88
NO.	RÉVISION (S)	DATE



Montreal, Quebec, Jonkoping, Penumbra, Thos-McKinnon, Victoria, Kelowna, Vancouver, 6226-COMELA LA PALMSE, BASTI-ROBERTO	Donnerstag part
Donnerstag part	HERSE LACALLE
Vendredi part	apartement part

Titre du projet:

SPEED CRANE  
CCGS SIR WILFRED LAMBERT

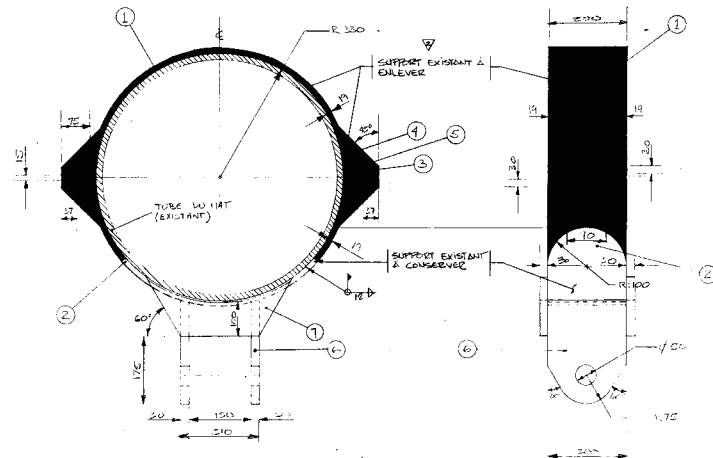
Titre du dessin:

ATTACHES D-BLOCKS  
FOUR ITEMS \*7ET\*20

Echelle:	Dossier no:	Feuille no:
125	30-612	ADS-7
Date:	C.A.G. no:	
7/11/87	—	

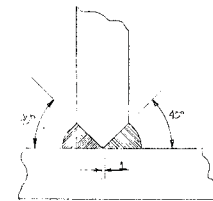
ACS-7

# ATTACHE CARGO ST



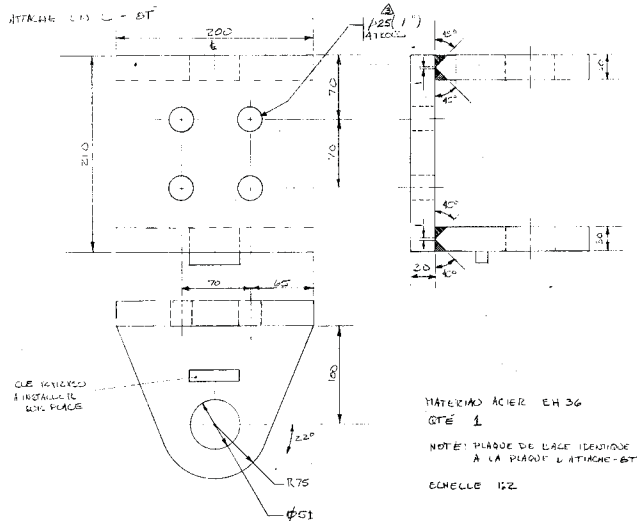
DESIGNATION	QTE	MATERIEL
1. TUBE DU HAT	1	ACIER 4000 200T
2. PLACQUE R.P.T.	1	ACIER
3. PLACQUE R.P.T.	4	ACIER
4. RINGUE R.P.T.	2	ACIER
5. RINGUE R.P.T.	2	ACIER
6. RINGUE R.P.T.	2	ACIER
7. RINGUE R.P.T.	2	ACIER

POUR TOUT LES JOINTS DE SODDAGE



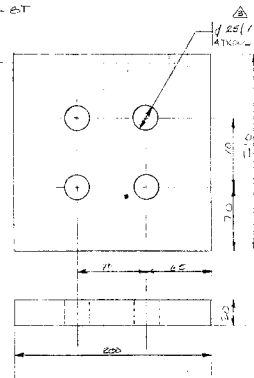
MATERIEL ACIER EH 36  
SOUTIENS METALLIQUES  
ECHAPE 1/2

## ATTACHE CARGO ST



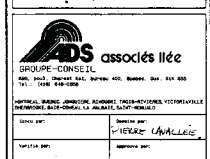
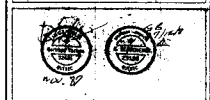
MATERIEL ACIER EH 36  
GTE 1  
NOTE: PLACQUE DE BASE IDENTIQUE  
A LA PLACQUE D'ATTACHE-ST  
ECHAPE 1/2

## ATTACHE CARGO ST



MATERIEL ACIER EH 36  
GTE 1  
NOTE: SOUTIENS METALLIQUES  
ECHAPE 1/2

PERMISEMENT PLASSAGE	JAN 87
TEL QUE CONSTRUIT	NOV 87
1. L'INSTALLATION	11/1/87
NO	REVISION (S)
DATE	



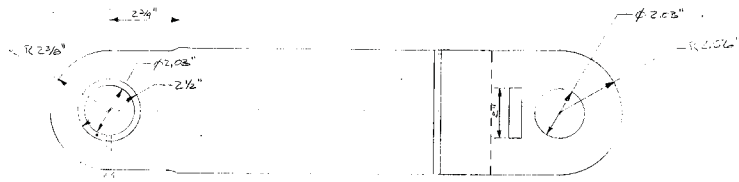
Titre du projet:	SPÉCIFICATION
Titre du dessin:	ATTACHE ST ET ST

ÉCHÉLÉ	CONSTRUIT	FEUILLE NO
4/11/87	1/1/87	ALC-8

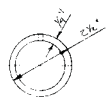
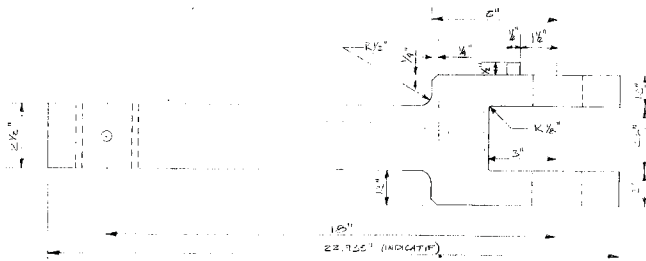


[illegible][illegible]

# CLEVIS D'ATTACHE POULIE #14



FAIRE L'ESQUISSE DÉTAIL À LA

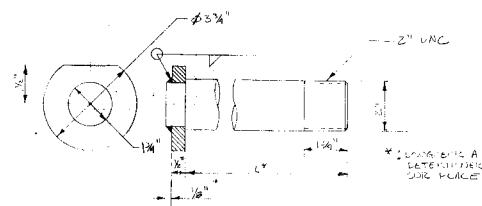


2 1/2"  
MATERIAU: GUN-METAL

2 1/2"  
MATERIAU: ACIER 4140

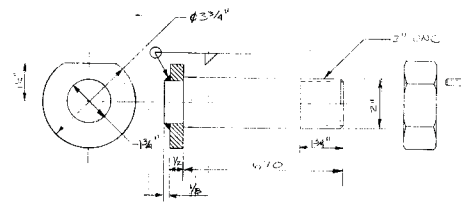
ECHELLE 1:2

## TIGE TRANSVERSALE - SOUTIENS LES POULIES #14



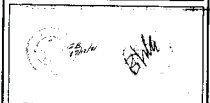
MATERIAU: ACIER 4140  
2 1/2"  
NTS

## TIGE CLEVIS - POULIE #14



MATERIAU: ACIER 4140  
2 1/2"  
NTS

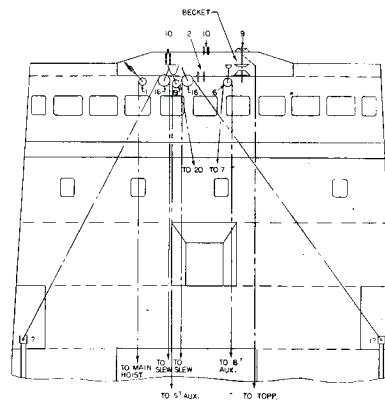
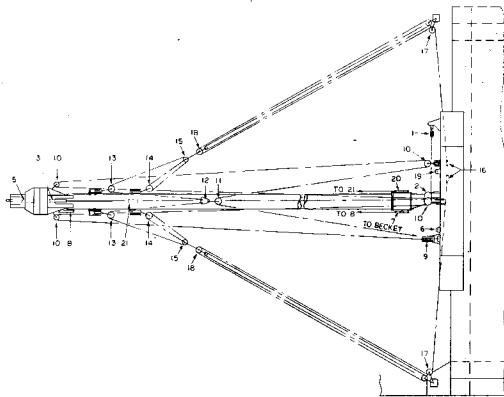
NO.	REVISION (S)	DATE



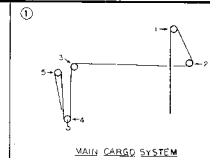
DESIGNÉ PAR:	DESIGNÉ PAR:
VERIFIÉ PAR:	VERIFIÉ PAR:
PIÈCE UNIQUE	

Titre du projet:	
EXPÉDITIONNAIRE	
CARRÉ SUR WILFRIED LARREY	
Titre du dessin:	
CLEVIS ET TIGES D'ATTACHE ITEM 14	

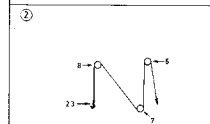
Echelle:	Donnée par:	Façon de:
1:2	30 612	ALC-10
Date:	C.A.D. par:	
10/12/87		

[illegible]

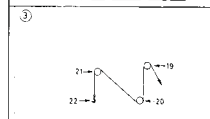
• ANCIENNE VALEUR



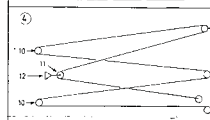
## MAIN CARD SYSTEM



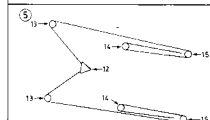
### 8. AUX. CARGO SYSTEM



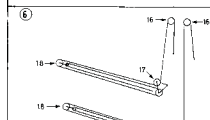
### 5.7 AUX. CARGO SYSTEM



### TOPPING SYSTEM



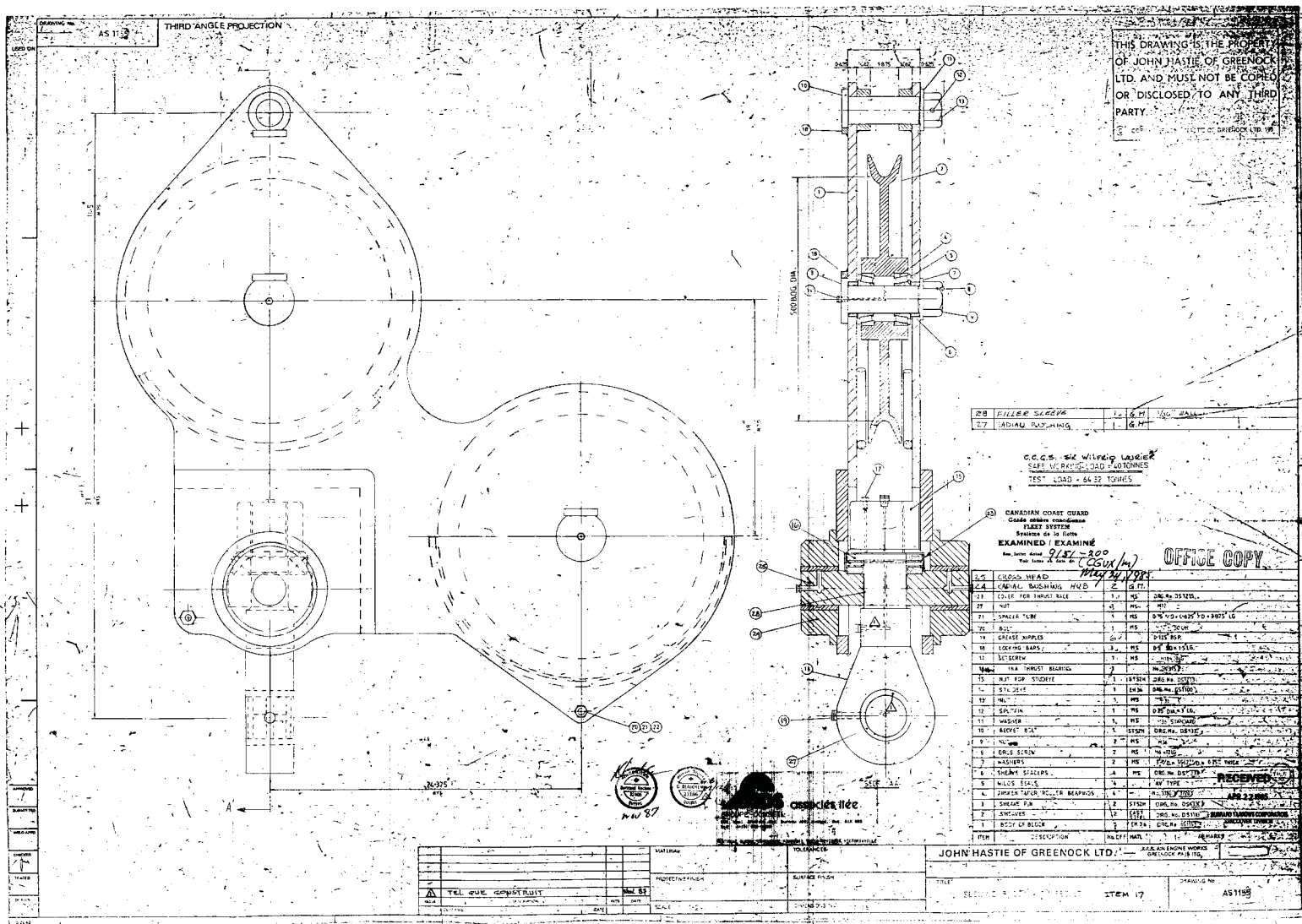
### COMPENSATOR SYSTEM



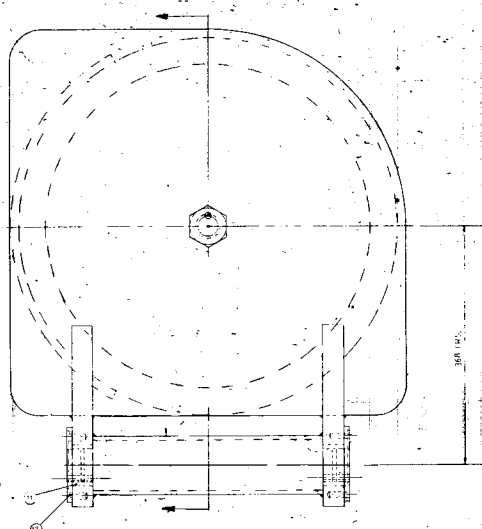
### SLEW SYSTEM

[illegible]





Technical drawing of a mechanical assembly, likely a valve or pump component. The drawing includes a cross-sectional view and a top view. The cross-section shows a central shaft with a conical tip, surrounded by a housing with various seals and components labeled with numbers 1 through 10. The top view shows a circular flange with a central hole and a surrounding ring.



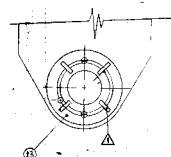
C.C.G.S. SIR WILFRED LAURIE  
SAFE WORKING LOAD = ~~35-5 TONNES~~ 5.25 TONNES.  
TEST LOAD = 16.3 TUNNES

CANADIAN COAST GUARD  
Garde côtière canadienne  
FLEET SYSTEM  
Système de la flotte  
EXAMINED | EXAMINÉ  
Don letter dated 9/11/200 (CGVX/m)  
Your letter no 4240  
May 24, 1985 OFF

[illegible]

				MATERIAL				TOLERANCES			
▲ USINER AXE DE REEL RAJETER 4140 TEL QUE CONSTITUIT				LIVRE A P NOTA 01				SURFACE FINIE			
▲ CREMILIN DE GARAGE & BOUT WORKING LOOS				WIN 84							
QTY		DESCRIPTION		MTR		DATE		SCALE		DIMENSIONS IN INCHES	
1		1000		1000		1000		1000		1000	

COPYRIGHT JOHN HASTE OF GREENOCK LTD. 1961



CANADIAN COAST GUARD  
Garde c6tierre canadienne  
FLEET SYSTEM  
Syst6me de la flotte  
EXAMINED / EXAMIN6  
See letter dated 9/11/82

50 (GVX/m)  
May 21, 1968

JOHN HASTIE OF GREENOCK LTD. — KILBURN ENGINE WORKS  
GREENOCK PAIS 27L 106

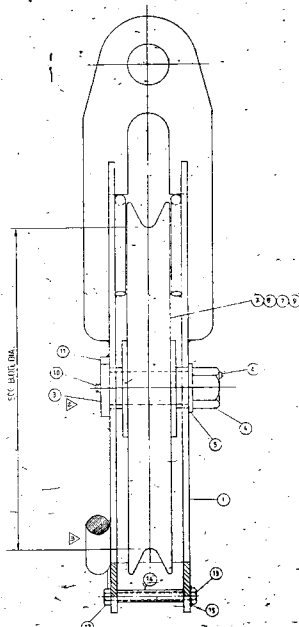
JOHN HASTIE OF GREENOCK LTD

GA. DE. DEF. BUREAU

ITEM 1.17.30

4-1150

APR 1969



THIS DRAWING IS THE PROPERTY  
OF JOHN HASTIE OF GREENOCK  
LTD. AND MUST NOT BE COPIED  
OR DISCLOSED TO ANY THIRD  
PARTY.

C.C.G.S. MR WILFRED CHURCHER  
SAFE WORKING LOAD: 10 TONNES  
TEST LOAD 13 1/2 TONNES

CANADIAN COAST GUARD  
Garde côtière canadienne  
FLEET SYSTEM  
Synthèse de la flotte  
EXAMINED / EXAMINÉ

OFFICE COPY

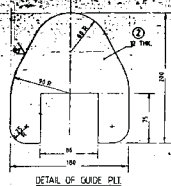
[illegible][illegible]

AS1208

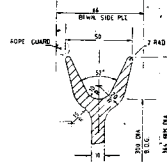
THIRD ANGLE PROJECTION

THIS DRAWING IS THE PROPERTY  
OF JOHN HASTIE OF GREENOCK  
LTD. AND MUST NOT BE COPIED  
OR DISCLOSED TO ANY THIRD  
PARTY.

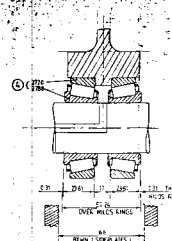
© COPYRIGHT JOHN HASTIE OF GREENOCK LTD 1981



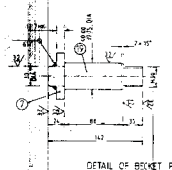
DETAIL OF GUIDE PILE



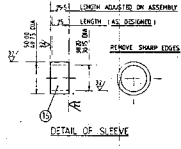
DETAIL OF ROPE GROOVE



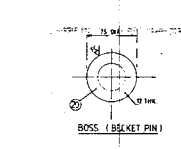
DETAIL OF SHEAR PIN



DETAIL OF BRACKET PIN



DETAIL OF SLEEVE



BOSS (BRACKET PIN)

OFFICE COPY  
EXAMINED 1 EXAMINE  
9/17-300 (CGH/4)  
May 24, 1981

RECEIVED  
APR 22 1985

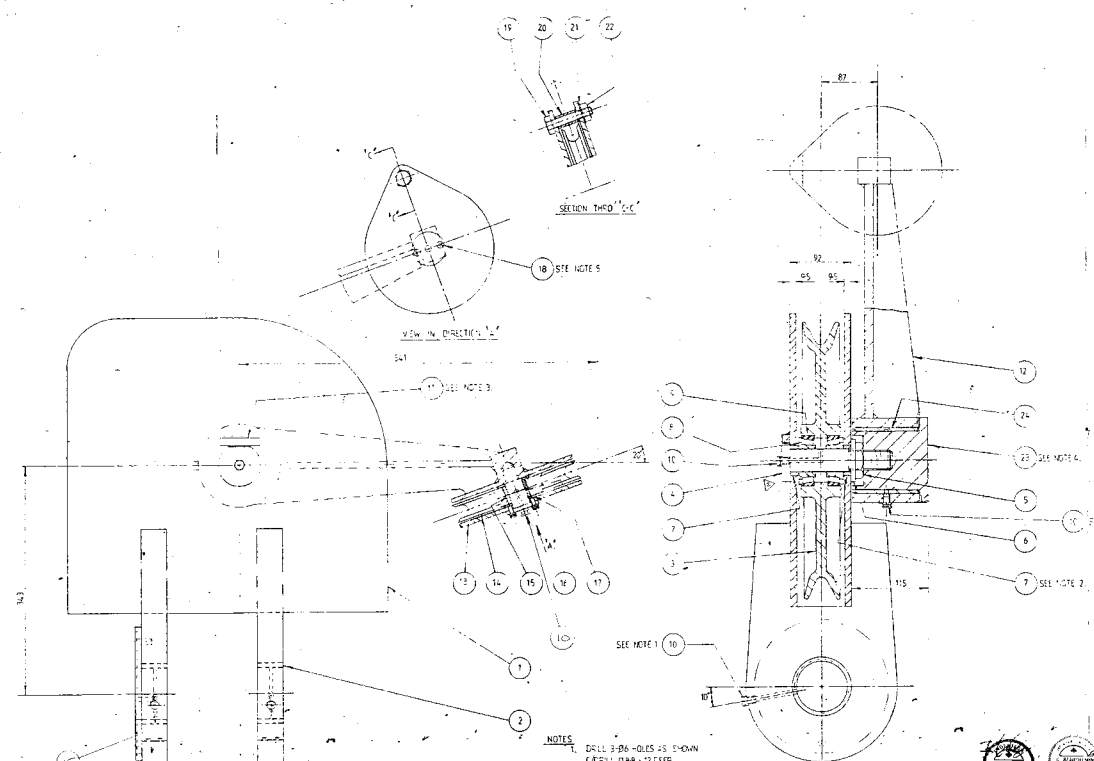
WEIGHT OF BLOCK 62 KG

NO.	DESCRIPTION	QTY	UNIT
1	REDUCTION BLOCK	1	PC
2	GUIDE PILE	1	PC
3	ROPE GROOVE	1	PC
4	SHEAR PIN	1	PC
5	BRACKET PIN	1	PC
6	SLEEVE	1	PC
7	BOSS (BRACKET PIN)	1	PC
8	ROPE GUARD	1	PC

JOHN HASTIE OF GREENOCK LTD.	REDUCTION BLOCK	AS1208
SCALE 1:2 & AS SHOWN	REDUCTION BLOCK	AS1208

AS 1211

THIRD ANGLE PROJECTION



ITEM	DESCRIPTION	QTY	MAT'L	REMARKS
1	BODY OF DEE BLOCK	1	MS.	DRG. NO. 851199 ITEMS 1-21
2	BUSH	2	P.B.	DRG. NO. 051191
3	SHEAVE (CAST STEEL)	1		DRG. NO. 0511679
4	SHEAVE PIN	1	SAE-4034	DRG. NO. 051433, VOLT. A
5	THIN NUT	1	MS.	M30 LOCK NUT 1/2 THICK.
6	WASHER	1	MS.	6.70 x 33/32 x 5 THICK.
7	SHEAVE SPIDER	2	MS.	DRG. NO. 051189
8	TUBES SEAL	2		AV. TYPE TO SUIT BEARINGS
9	TAPER ROLLER BEARING	2		THOMSON (LM1058/LM1059)
10	GREASE TUBULE	5		1/2" BSP
11	LOCKING BAR	1	MS.	12 x 12 x 55 LONG.
12	SOLE GUIDE ARM	1	MS.	DRG. NO. 851121 ITEM 1-53
13	SOLE CHECK PLATE	1	MS.	4 x 2 x 1/4 6.3
14	SHEAVE	1	MS.	4 x 4 x 1/4 7.1
15	BUSH (POLYETHYLENE)	1		4 x 4 x 1/4 8.3
16	WASHER	2		4 x 4 x 1/4 9.3
17	SHEAVE PIN	1	MS.	DRG. NO. 051434
18	ANCHOR BUSH (L&S) SCREW	2	STL.	M6 x 12 LONG.
19	SOLE	1	MS.	150MM x 25 LONG.
20	TUBE	1	MS.	75/50 x 60 WALL THK x 355 LONG.
21	WASHER	1	MS.	1/2"
22	NUT	1	MS.	1/2" BSF
23	SOLE PLATE	1	MS.	DRG. NO. 051435
24	BUSH	1	P.B.	1/2" BSP
25	THROAT ROD (L&S) WING	1		ITEM 2, DRG. ADS-9

C.C.G.S. Ltd. WILKIE Labeled  
SAFE Working Load: 301 TONNES

CANADIAN CODE 10730  
Guide (rope) (rope)  
FLYER SYSTEM  
EXAMINED / EXAMINE  
See letter dated 9/17/2000  
See letter dated 9/17/2000  
May 24, 1995

OFFICE COPY

RECEIVED  
APR 22 1995  
HASTIE OF GREENOCK LTD.  
ENCLOSURE

THIS DRAWING IS THE PROPERTY  
OF JOHN HASTIE OF GREENOCK  
LTD. AND MUST NOT BE COPIED  
OR DISCLOSED TO ANY THIRD  
PARTY.  
C. COPYRIGHT 1971 HASTIE OF GREENOCK LTD. 108

ADS associés ltée  
GROUPE-CONSEIL  
200 St. Jean, Québec, Québec, Canada, Q1S 4K6  
Tel. 1-800-387-1000

- NOTES
1. DRILL 3/8" HOLES AS SHOWN (DRILL 9/16" x 12 DEEP, TAP 1/2" BSP x 12 DEEP)
  2. ITEM 7 AS WASHED END TO BE MACHINED TO FINISHED LENGTH AFTER MACHINING CAP
  3. WELD TO PLACE, 6 FILLET AS SHOWN
  4. ITEM 23 TO HAVE LOCKWIRE GRADE ON M30 THREAD
  5. 2 M30 TAPPED THRO' HOLES DRILLED ON ITEM 15 TO PLACE FROM ITEM 17 (DRILL 1/2" THRO')

PLAN VIEW WITH "ROPE GUIDE ARM"  
ROTATED THRO' 90°

MATERIAL		TOLERANCES		JOHN HASTIE OF GREENOCK LTD.	
1	STEEL	1	STEEL	1	STEEL
2	STEEL	1	STEEL	1	STEEL
3	STEEL	1	STEEL	1	STEEL
4	STEEL	1	STEEL	1	STEEL
5	STEEL	1	STEEL	1	STEEL
6	STEEL	1	STEEL	1	STEEL
7	STEEL	1	STEEL	1	STEEL
8	STEEL	1	STEEL	1	STEEL
9	STEEL	1	STEEL	1	STEEL
10	STEEL	1	STEEL	1	STEEL
11	STEEL	1	STEEL	1	STEEL
12	STEEL	1	STEEL	1	STEEL
13	STEEL	1	STEEL	1	STEEL
14	STEEL	1	STEEL	1	STEEL
15	STEEL	1	STEEL	1	STEEL
16	STEEL	1	STEEL	1	STEEL
17	STEEL	1	STEEL	1	STEEL
18	STEEL	1	STEEL	1	STEEL
19	STEEL	1	STEEL	1	STEEL
20	STEEL	1	STEEL	1	STEEL
21	STEEL	1	STEEL	1	STEEL
22	STEEL	1	STEEL	1	STEEL
23	STEEL	1	STEEL	1	STEEL
24	STEEL	1	STEEL	1	STEEL
25	STEEL	1	STEEL	1	STEEL

ITEM 2  
ARRANGEMENT OF DEE BLOCK & ROPE GUIDE  
AS 1211

