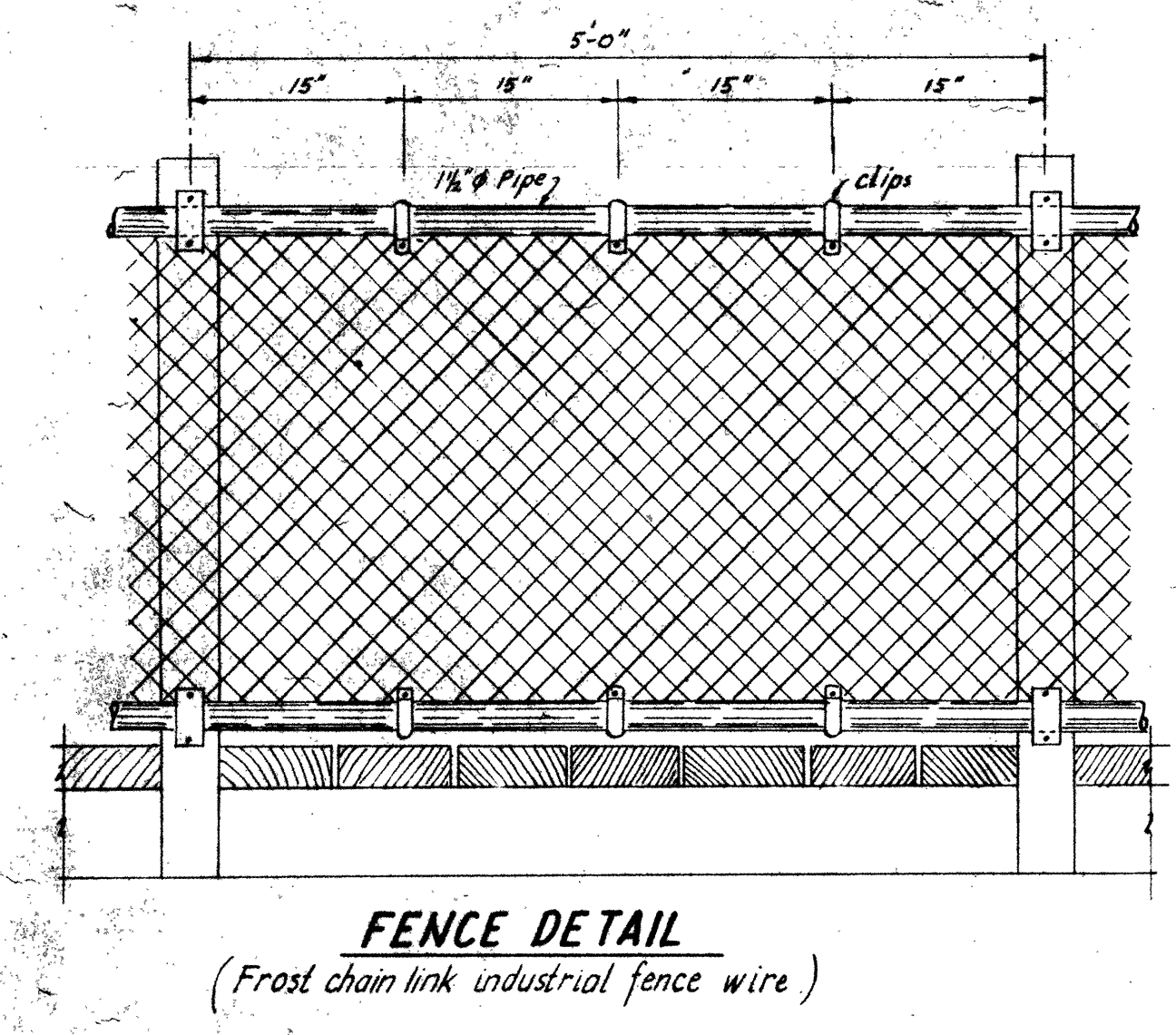


# SUSPENSION BRIDGE MALIGNE RIVER FIFTH BRIDGE

Scale: As shown Date: Dec. 1964  
Drawn: N. Bolony  
Traced: N. Bolony  
Prepared in Resident Engineer's Office Jasper, Alberta



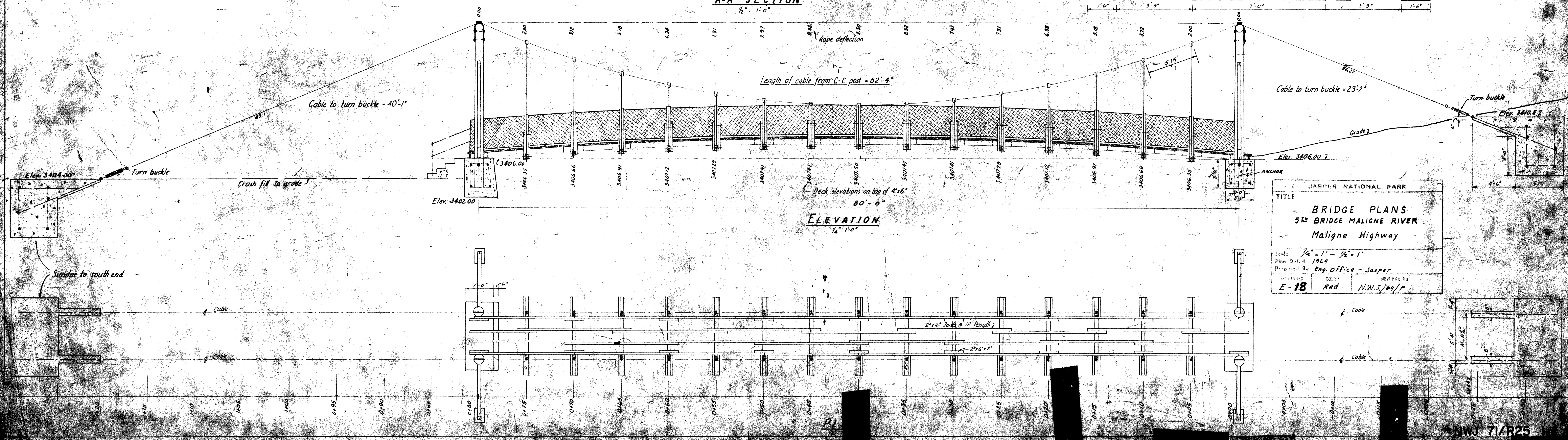
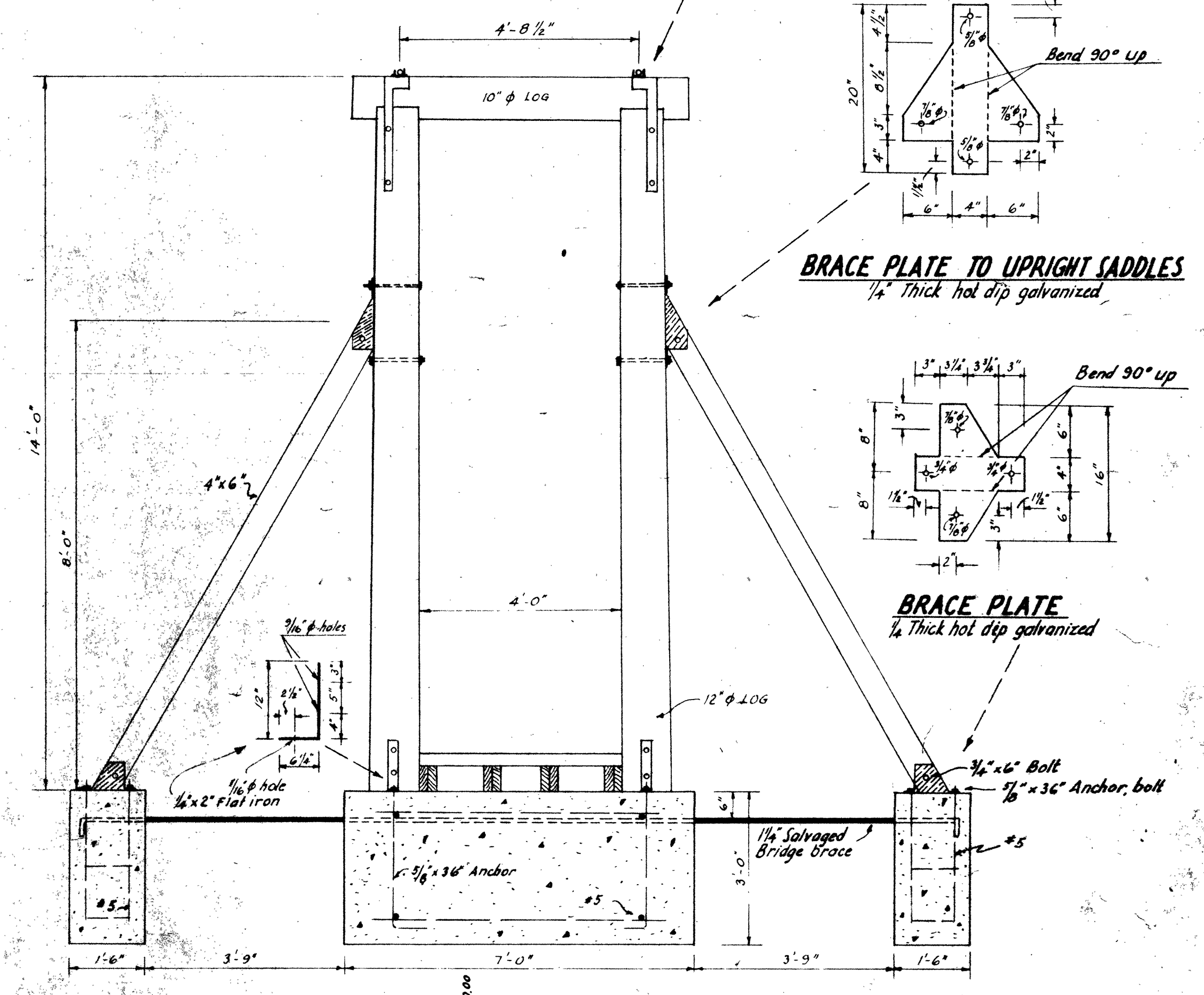
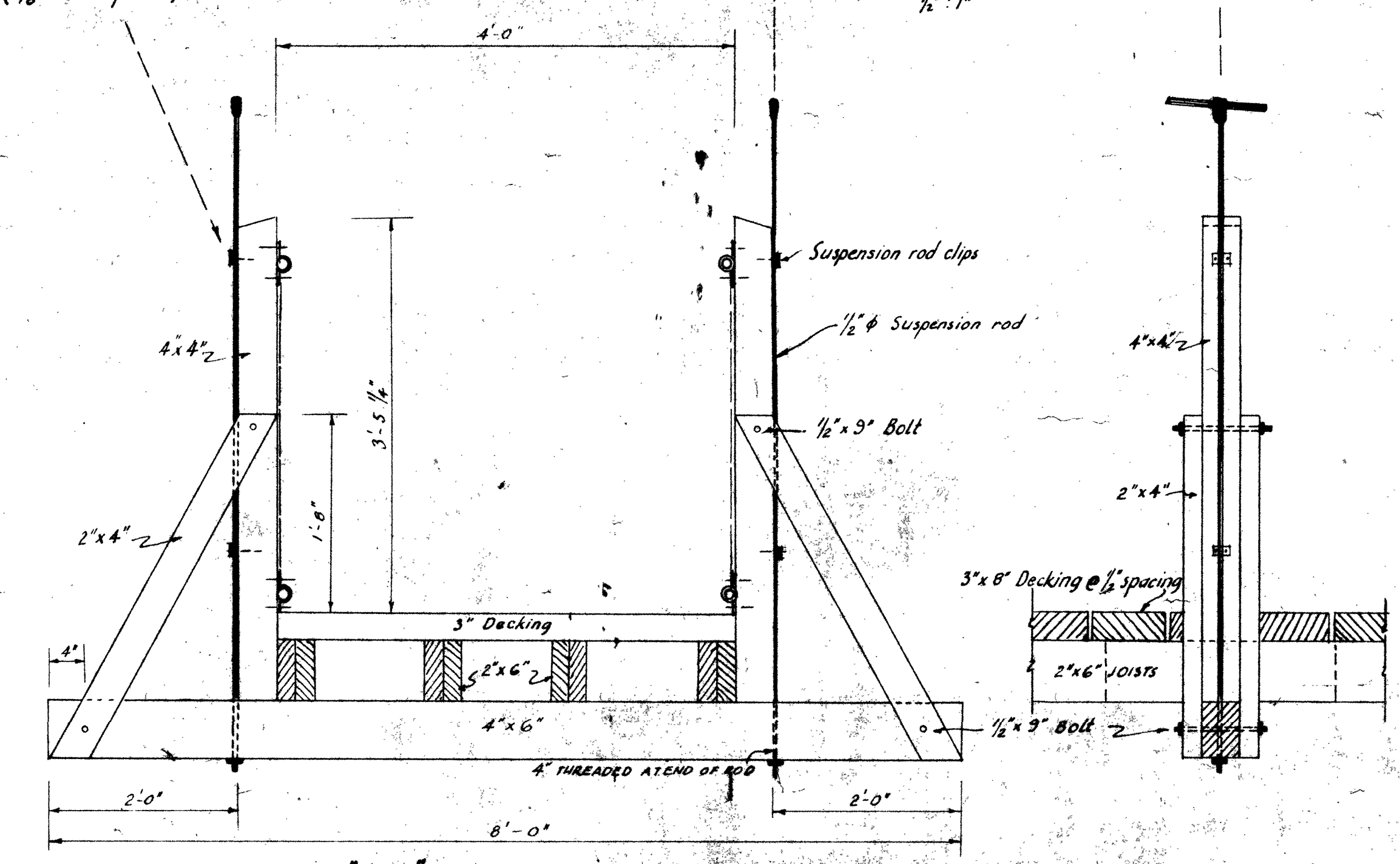
**SUSPENSION ROD CLIP**  
(1/8" Steel plate)

**CABLE CLAMP / SUSPENSION ROD**  
1/2" 1"

**STRAP IRON for POST / CABLE TIE**

**BRACE PLATE TO UPRIGHT SADDLES**  
1/4" Thick hot dip galvanized

**BRACE PLATE**  
1/4" Thick hot dip galvanized



JASPER NATIONAL PARK  
**BRIDGE PLANS**  
5th BRIDGE MALIGNE RIVER  
Maligne Highway  
Scale: 1/4" = 1' - 1/2" = 1'  
Plan Date: 1964  
Prepared by: Eng. Office - Jasper  
E-18 Red N.W.J./64/p