

APPENDIX 1

SITE FIGURES



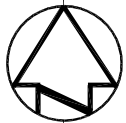
Public Works and
Government Services Canada
Architectural and Engineering Services
Ontario Region

Travaux publics et
Services gouvernementaux Canada
Services d'architecture et de génie
Région de l'Ontario



KEY MAP N.T.S.

KGS
GROUP
CONSULTING
ENGINEERS



REFERENCE

- 1. MAP BASED FROM "AUX QUATRE POINTS
CARIAUX"

0	ISSUED FOR FINAL SPECIFICATION	13/03/28
revision	description	date

Do not scale drawings.
Verify all dimensions and conditions on site and
immediately notify the engineer of all discrepancies.

A	Detail No.
B	No. du détail
C	drawing no. — where detail required dessin no. — où détail exigé
	drawing no. — where detailed dessin no. — où détaillé

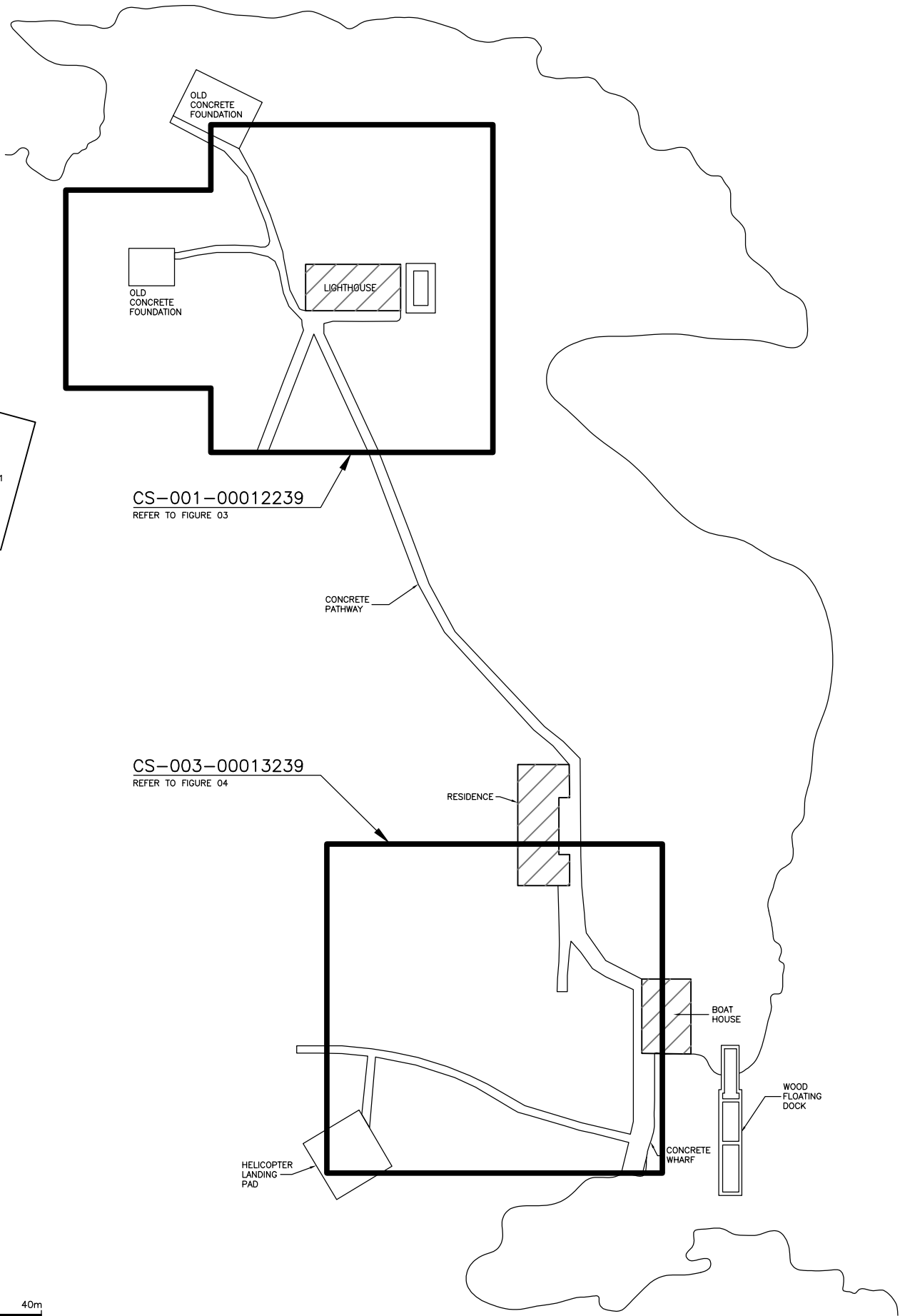
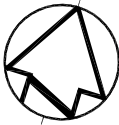
project title
titre du projet
GEORGIAN BAY, Ontario
GEREAUX ISLAND

GEREAUX ISLAND
SITE REMEDIATION

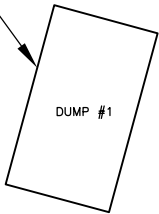
drawing title
titre du dessin

SITE LOCATION

drawn by dessiné par	GC	
designed by conçu par	GC	
approved by approuvé par	TG	
tender soumission	FINAL SPECIFICATION	project manager administrateur de projets
project date date du projet	MARCH 2013	
project no. no. du projet	12-0006-016	
drawing no. dessiné no.	FIGURE 1	



CS-005-00024547
REFER TO FIGURE 05



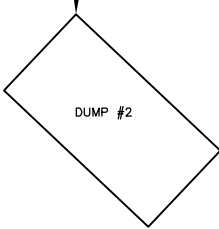
CS-001-00012239
REFER TO FIGURE 03

CONCRETE
PATHWAY

CS-003-00013239
REFER TO FIGURE 04

RESIDENCE

CS-004-00013240
REFER TO FIGURE 05



DUMP SITE 3
REFER TO FIGURE 05

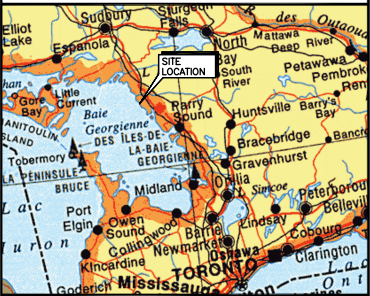


KEY PLAN



Public Works and
Government Services Canada
Architectural and Engineering Services
Ontario Region

Travaux publics et
Services gouvernementaux Canada
Services d'architecture et de génie
Région de l'Ontario



KEY MAP N.T.S.

KGS
GROUP
CONSULTING
ENGINEERS



REFERENCE

1. MAP BASED FROM "AUX QUATRE POINTS CARIAUX"

0	ISSUED FOR FINAL SPECIFICATION	13/03/28
revision	description	date

Do not scale drawings.
Verify all dimensions and conditions on site and
immediately notify the engineer of all discrepancies.



- A Detail No.
No. du détail
B drawing no. - where detail required
dessin no. - où détail exigé
C drawing no. - where detailed
dessin no. - où détaillé

project title
titre du projet
GEORGIAN BAY, Ontario
GEREAUX ISLAND

GEREAUX ISLAND
SITE REMEDIATION

drawing title
titre du dessin

KEY PLAN

drawn by
dessiné par

GC

designed by
conc par

GC

approved by
approuvé par

TG

tender
soumission

FINAL SPECIFICATION

project date
date du projet

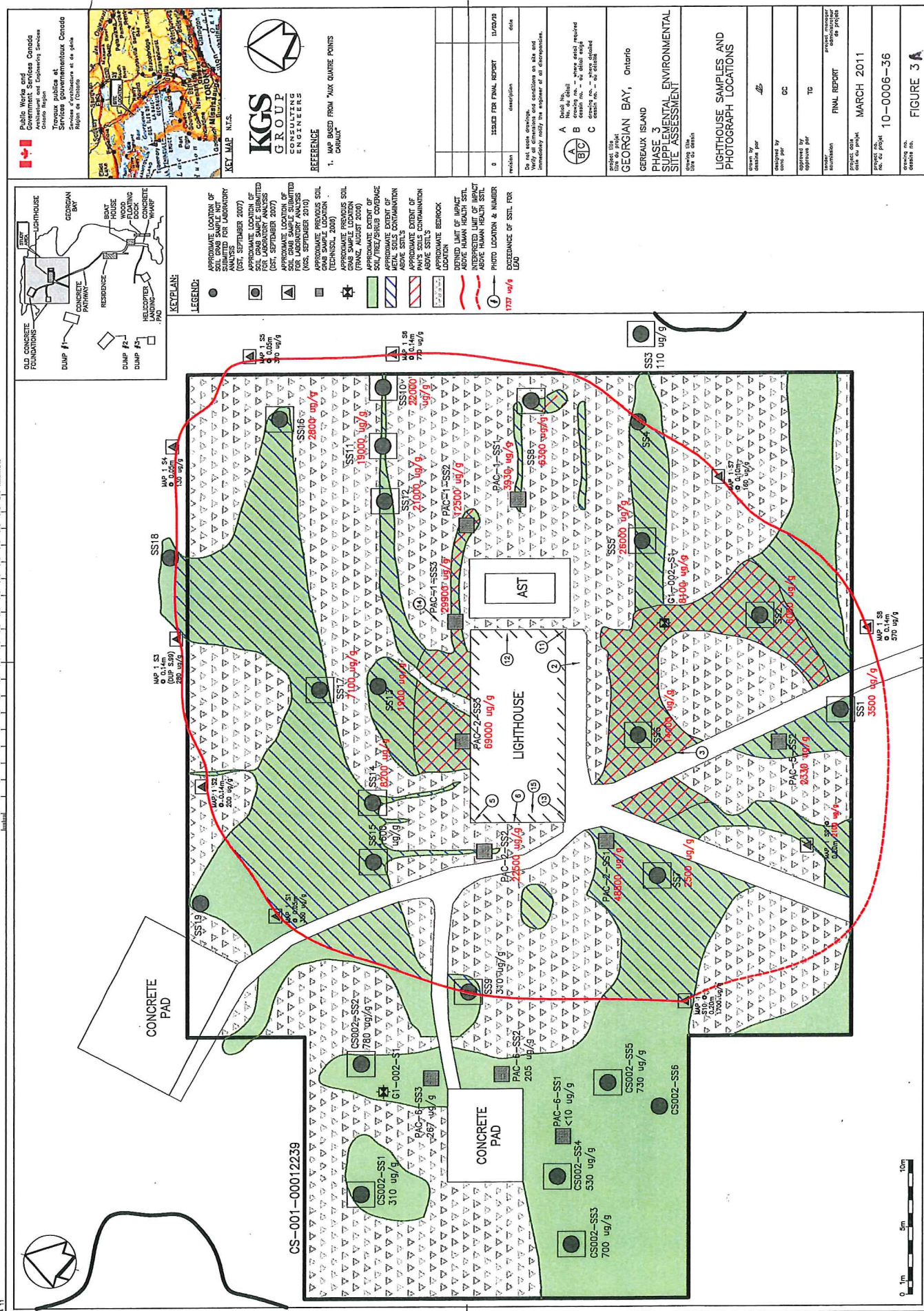
MARCH 2013

project no.
no. du projet

12-0006-016

drawing no.
dessiné no.

FIGURE 2



0 10 20 30 40 50 60 70 80 90 100 110 120 130 140 150 160 170 180 190 200 metres



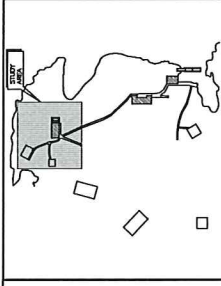
OLD CONCRETE FOUNDATION

OLD CONCRETE FOUNDATION

LIGHT TOWER

KEY PLAN:

- LEGEND:
- APPROXIMATE EXTENT OF SOIL/REEF/SUBS COVERAGE
 - DEFINED LIMIT OF METALS CONTAMINATED SOIL TO BE REMOVED
 - DEFINED LIMIT OF PAH/METALS CONTAMINATED SOIL TO BE REMOVED
 - APPROXIMATE BEDROCK
 - DEFINED LIMIT OF NON-HAZARDOUS SOIL TO BE REMOVED
 - DEFINED LIMIT OF HAZARDOUS SOIL TO BE REMOVED
 - NEEDED LIMIT OF NON-HAZARDOUS SOIL TO BE REMOVED



Public Works and Government Services Canada
Travaux publics et Services gouvernementaux Canada
Region de l'Ontario



KEY MAP N.T.S.



KGS GROUP
ENGINEERS

REFERENCE

1. MAP BASED FROM "AUX QUATRE POINTS D'ARBITRE"

revision	description	date
0	ISSUED FOR FINAL SPECIFICATION	13/08/21

Do not reuse drawings, drawings are the property of KGS and are not to be reproduced without the written consent of KGS. Drawings are the property of KGS and are not to be reproduced without the written consent of KGS.

A Detail No. 100, 101, 102, 103, 104, 105, 106, 107, 108, 109, 110, 111, 112, 113, 114, 115, 116, 117, 118, 119, 120, 121, 122, 123, 124, 125, 126, 127, 128, 129, 130, 131, 132, 133, 134, 135, 136, 137, 138, 139, 140, 141, 142, 143, 144, 145, 146, 147, 148, 149, 150, 151, 152, 153, 154, 155, 156, 157, 158, 159, 160, 161, 162, 163, 164, 165, 166, 167, 168, 169, 170, 171, 172, 173, 174, 175, 176, 177, 178, 179, 180, 181, 182, 183, 184, 185, 186, 187, 188, 189, 190, 191, 192, 193, 194, 195, 196, 197, 198, 199, 200, 201, 202, 203, 204, 205, 206, 207, 208, 209, 210, 211, 212, 213, 214, 215, 216, 217, 218, 219, 220, 221, 222, 223, 224, 225, 226, 227, 228, 229, 230, 231, 232, 233, 234, 235, 236, 237, 238, 239, 240, 241, 242, 243, 244, 245, 246, 247, 248, 249, 250, 251, 252, 253, 254, 255, 256, 257, 258, 259, 260, 261, 262, 263, 264, 265, 266, 267, 268, 269, 270, 271, 272, 273, 274, 275, 276, 277, 278, 279, 280, 281, 282, 283, 284, 285, 286, 287, 288, 289, 290, 291, 292, 293, 294, 295, 296, 297, 298, 299, 300, 301, 302, 303, 304, 305, 306, 307, 308, 309, 310, 311, 312, 313, 314, 315, 316, 317, 318, 319, 320, 321, 322, 323, 324, 325, 326, 327, 328, 329, 330, 331, 332, 333, 334, 335, 336, 337, 338, 339, 340, 341, 342, 343, 344, 345, 346, 347, 348, 349, 350, 351, 352, 353, 354, 355, 356, 357, 358, 359, 360, 361, 362, 363, 364, 365, 366, 367, 368, 369, 370, 371, 372, 373, 374, 375, 376, 377, 378, 379, 380, 381, 382, 383, 384, 385, 386, 387, 388, 389, 390, 391, 392, 393, 394, 395, 396, 397, 398, 399, 400, 401, 402, 403, 404, 405, 406, 407, 408, 409, 410, 411, 412, 413, 414, 415, 416, 417, 418, 419, 420, 421, 422, 423, 424, 425, 426, 427, 428, 429, 430, 431, 432, 433, 434, 435, 436, 437, 438, 439, 440, 441, 442, 443, 444, 445, 446, 447, 448, 449, 450, 451, 452, 453, 454, 455, 456, 457, 458, 459, 460, 461, 462, 463, 464, 465, 466, 467, 468, 469, 470, 471, 472, 473, 474, 475, 476, 477, 478, 479, 480, 481, 482, 483, 484, 485, 486, 487, 488, 489, 490, 491, 492, 493, 494, 495, 496, 497, 498, 499, 500, 501, 502, 503, 504, 505, 506, 507, 508, 509, 510, 511, 512, 513, 514, 515, 516, 517, 518, 519, 520, 521, 522, 523, 524, 525, 526, 527, 528, 529, 530, 531, 532, 533, 534, 535, 536, 537, 538, 539, 540, 541, 542, 543, 544, 545, 546, 547, 548, 549, 550, 551, 552, 553, 554, 555, 556, 557, 558, 559, 560, 561, 562, 563, 564, 565, 566, 567, 568, 569, 570, 571, 572, 573, 574, 575, 576, 577, 578, 579, 580, 581, 582, 583, 584, 585, 586, 587, 588, 589, 590, 591, 592, 593, 594, 595, 596, 597, 598, 599, 600, 601, 602, 603, 604, 605, 606, 607, 608, 609, 610, 611, 612, 613, 614, 615, 616, 617, 618, 619, 620, 621, 622, 623, 624, 625, 626, 627, 628, 629, 630, 631, 632, 633, 634, 635, 636, 637, 638, 639, 640, 641, 642, 643, 644, 645, 646, 647, 648, 649, 650, 651, 652, 653, 654, 655, 656, 657, 658, 659, 660, 661, 662, 663, 664, 665, 666, 667, 668, 669, 670, 671, 672, 673, 674, 675, 676, 677, 678, 679, 680, 681, 682, 683, 684, 685, 686, 687, 688, 689, 690, 691, 692, 693, 694, 695, 696, 697, 698, 699, 700, 701, 702, 703, 704, 705, 706, 707, 708, 709, 710, 711, 712, 713, 714, 715, 716, 717, 718, 719, 720, 721, 722, 723, 724, 725, 726, 727, 728, 729, 730, 731, 732, 733, 734, 735, 736, 737, 738, 739, 740, 741, 742, 743, 744, 745, 746, 747, 748, 749, 750, 751, 752, 753, 754, 755, 756, 757, 758, 759, 760, 761, 762, 763, 764, 765, 766, 767, 768, 769, 770, 771, 772, 773, 774, 775, 776, 777, 778, 779, 780, 781, 782, 783, 784, 785, 786, 787, 788, 789, 790, 791, 792, 793, 794, 795, 796, 797, 798, 799, 800, 801, 802, 803, 804, 805, 806, 807, 808, 809, 810, 811, 812, 813, 814, 815, 816, 817, 818, 819, 820, 821, 822, 823, 824, 825, 826, 827, 828, 829, 830, 831, 832, 833, 834, 835, 836, 837, 838, 839, 840, 841, 842, 843, 844, 845, 846, 847, 848, 849, 850, 851, 852, 853, 854, 855, 856, 857, 858, 859, 860, 861, 862, 863, 864, 865, 866, 867, 868, 869, 870, 871, 872, 873, 874, 875, 876, 877, 878, 879, 880, 881, 882, 883, 884, 885, 886, 887, 888, 889, 890, 891, 892, 893, 894, 895, 896, 897, 898, 899, 900, 901, 902, 903, 904, 905, 906, 907, 908, 909, 910, 911, 912, 913, 914, 915, 916, 917, 918, 919, 920, 921, 922, 923, 924, 925, 926, 927, 928, 929, 930, 931, 932, 933, 934, 935, 936, 937, 938, 939, 940, 941, 942, 943, 944, 945, 946, 947, 948, 949, 950, 951, 952, 953, 954, 955, 956, 957, 958, 959, 960, 961, 962, 963, 964, 965, 966, 967, 968, 969, 970, 971, 972, 973, 974, 975, 976, 977, 978, 979, 980, 981, 982, 983, 984, 985, 986, 987, 988, 989, 990, 991, 992, 993, 994, 995, 996, 997, 998, 999, 1000

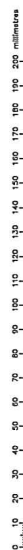
GEORGIAN BAY, Ontario
GEREAUX ISLAND
GEREAUX ISLAND
SITE REMEDIATION

LIGHT TOWER LIMITS OF CONTAMINATED SOIL

designed by	GC
designed by	GC
approved by	TC

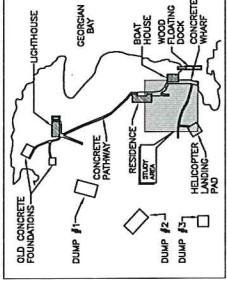
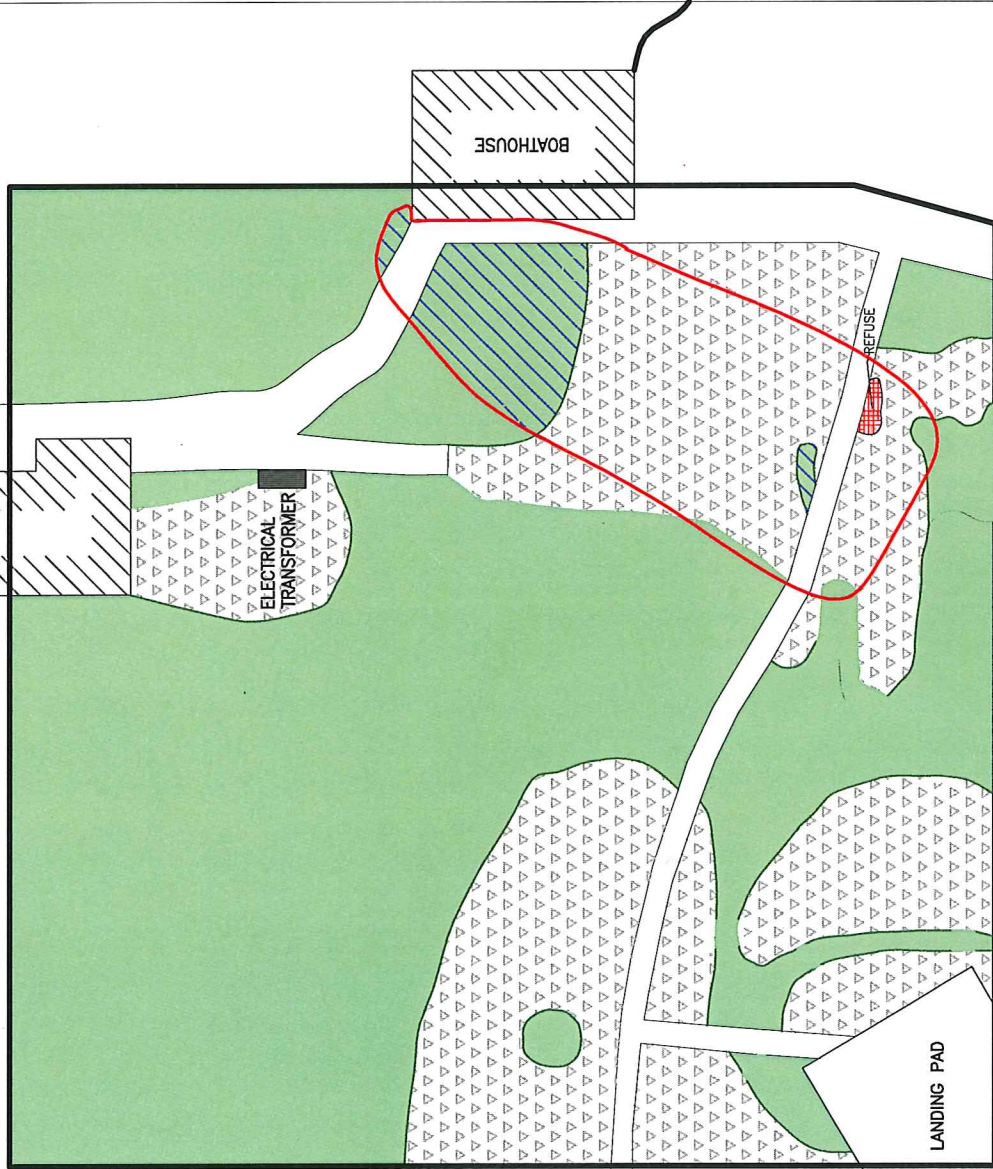
project manager	project manager
project start	AUGUST 2013
project end	13-0006-005

FIGURE 3B



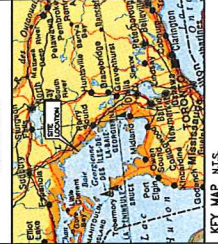


CS-003-00013239



KEY PLAN

- LEGEND:
- APPROXIMATE EXTENT OF SOIL/REE/SRUB COVERAGE
 - APPROXIMATE EXTENT OF METAL SOILS CONTAMINATION ABOVE SITE'S
 - APPROXIMATE BEDROCK LOCATION
 - DEFINITE LIMIT OF CONTAMINATED SOIL TO BE REMOVED



KEY MAP N.T.S.



REFERENCE

1. MAP BASED FROM "AUX QUATRE POINTS CAGAU"

revision	description	date
0	ISSUED FOR FINAL SPECIFICATION	12/18/2013

Do not make alterations, deletions, or additions to this drawing without the written approval of the engineer of all discrepancies.

- A Detail No. 1
B Detail No. 2
C Detail No. 3

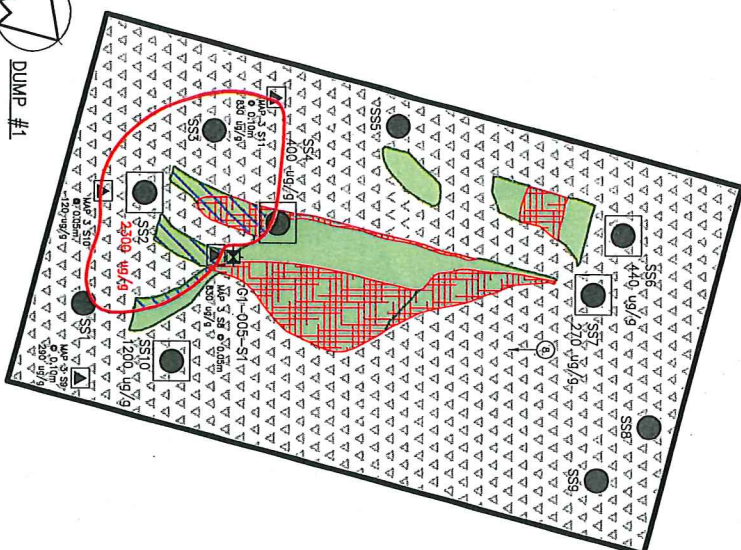
PROJECT TITLE
Geraux Island, Ontario
GERAUX ISLAND
GERAUX ISLAND
SITE REMEDIATION

RESIDENCE AND BOATHOUSE
LIMITS OF CONTAMINATED SOIL

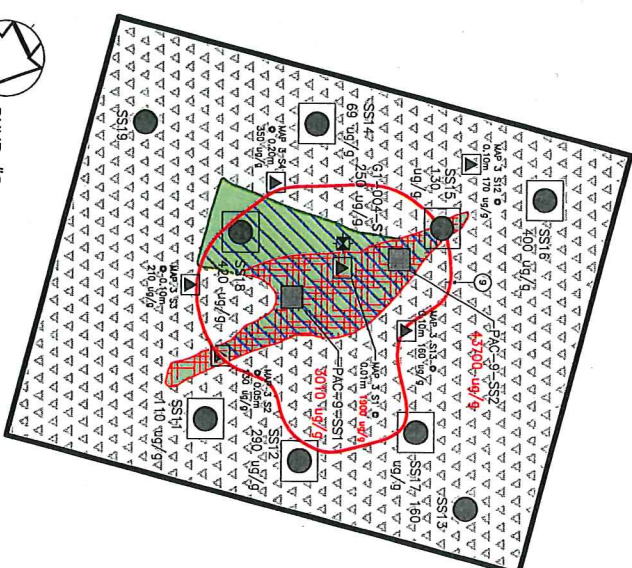
drawn by	GC
checked by	GC
approved by	TD

FINAL SPECIFICATION	AUGUST 2013
PROJECT NO.	13-0006-005
PROJECT NAME	GERAUX ISLAND
PROJECT NO.	13-0006-005

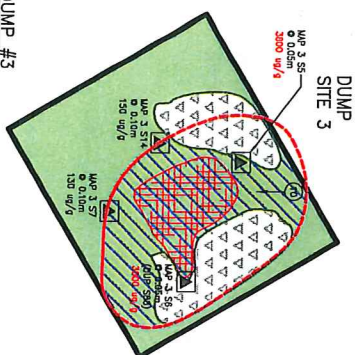
FIGURE 4 B



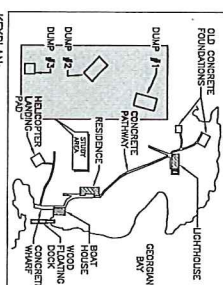
DUMP #1



DUMP #2



DUMP #3



 **Public Works and
Government Services Canada**
Architectural and Engineering Services
Ontario Region

**Trovez publicas at
Services gouvernementaux Canada**
Services d'architecture et de génie
Région de l'Ontario



1. MAP BASED FROM "AUX QUATRE POINTS CARIAUX"

Do not scale drawings.
Verify all dimensions and conditions on site and immediately notify the engineer of all discrepancies.

	Detail No.	No. du détail
A	growing no. — where detail first occurs	
B	detail no. — du détail existant	
C	growing no. — where detailed detail occurs	

GEORGIAN BAY, Ontario
GEREAUX ISLAND

PHASE 3
SUPPLEMENTAL ENVIRONMENTAL
SITE ASSESSMENT

lire du design

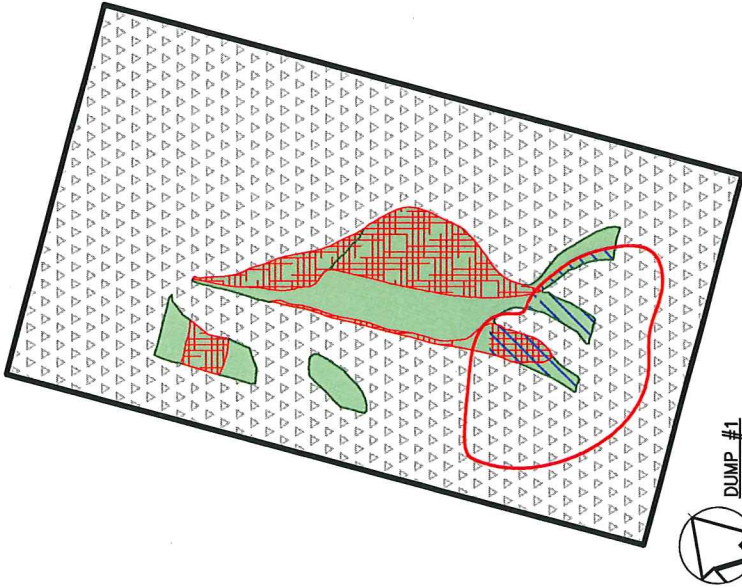
DUMP 1, 2, 3 SAMPLE AND PHOTOGRAPH LOCATIONS

Reviewed by Executive Staff	<i>AS</i>	Approved by Executive Staff	CC	Approved by Programs Per	TG	Submitted by Financial Services	Project Manager Cost Accounting and Projects	FINAL REPORT	MARCH 2011	PROJECT NO. 10-0006-36
--------------------------------	-----------	--------------------------------	----	-----------------------------	----	------------------------------------	--	--------------	------------	---------------------------

FIGURE 5 A

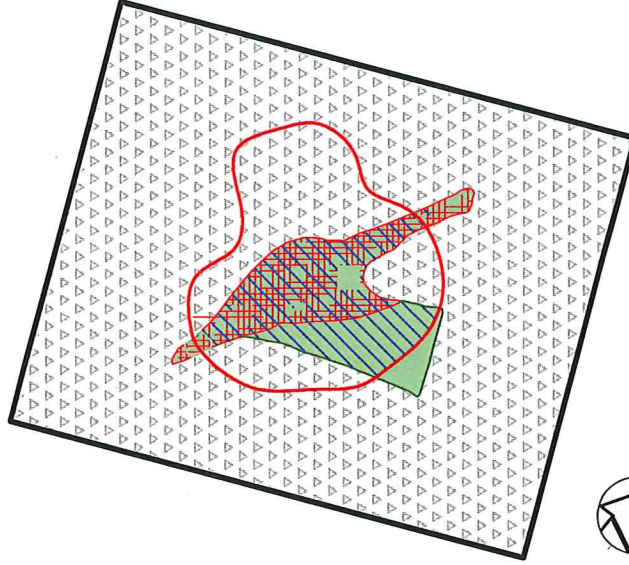
0 10 20 30 40 50 60 70 80 90 100 110 120 130 140 150 160 170 180 190 200 millimetres

CS-005-00024547

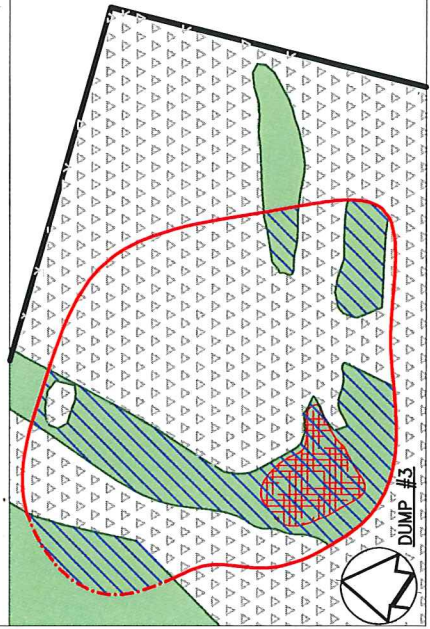


DUMP #1

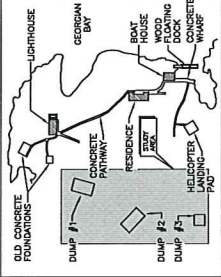
CS-004-00013240



DUMP #2



DUMP #3



KEY PLAN:

- LEGEND:
- APPROXIMATE EXTENT OF SOIL/REFUSE/SRUB COVERAGE
 - APPROXIMATE EXTENT OF HEAVY SOILS CONTAMINATION ABOVE STILLS
 - APPROXIMATE BEDROCK LOCATION
 - APPROXIMATE EXTENT OF REFUSE COVER TO BE REMOVED
 - DEFINED LIMIT OF CONTAMINATED SOIL TO BE REMOVED
 - INTERPRETED LIMIT OF CONTAMINATED SOIL TO BE REMOVED



Public Works and Government Services Canada
Travaux publics et Services gouvernementaux Canada
Region de l'Ontario
Region de l'Ontario



KEY MAP N.T.S.



REFERENCE

1. MAP BASED FROM "AUX QUATRE POINTS D'ARCADE"

revision	description	date
0	ISSUED FOR FINAL SPECIFICATION	12/08/13

Do not reuse drawings without the express written permission of KGS Group Inc. and immediately notify the engineer of all discrepancies.

A Detail No.
B No. of sheets
C Where detail required
D Sheet no. - all sheets
E Sheet no. - all sheets

Project No.
13-0006-005

Project Name
GEREAUX BAY, Ontario
GEREAUX ISLAND
SITE REMEDIATION

Project No.
13-0006-005

Project Name
GEREAUX BAY, Ontario
GEREAUX ISLAND
SITE REMEDIATION

Project No.
13-0006-005

Project Name
GEREAUX BAY, Ontario
GEREAUX ISLAND
SITE REMEDIATION



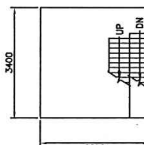
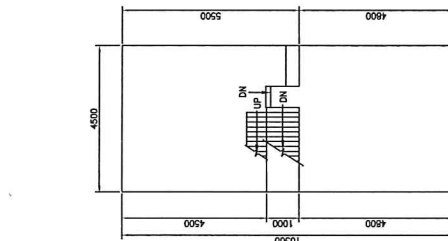
1. MAP BASED FROM "AUX QUATRE POINTS
CARNAUX"

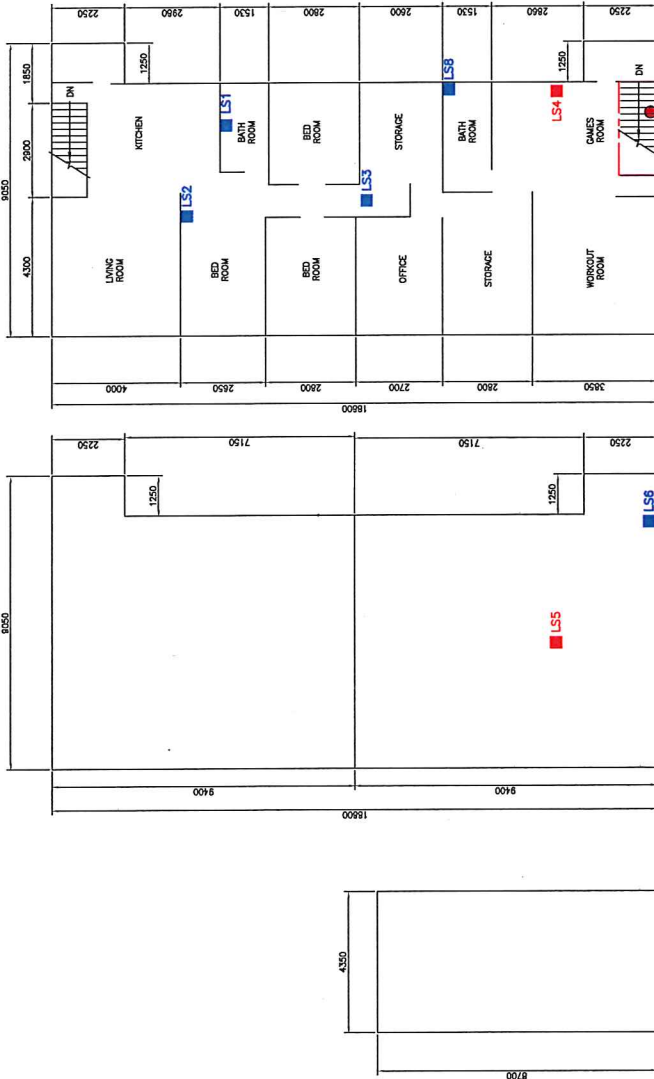
design no. - ou delatid

GEREAUX ISLAND
SITE REMEDIATION

EXTERIOR PAINT ABATEMENT

FIGURE 6





FLOOR LAYOUT
SCALE = 1/75 BATHHOUSE (B.H.)

BASEMENT LAYOUT
SCALE = 1/75 RESIDENCE (R.B.)

MAIN FLOOR LAYOUT
SCALE = 1/75 RESIDENCE (R.B.)

PAINT ABATEMENT NOTES:

1.0 GENERAL

- 1.1 SQUARE PAINT SAMPLES HIGHLIGHTED IN RED ARE LEAD BASED. THE CIRCULAR PAINT SAMPLE HIGHLIGHTED IN RED IS PCB AND LEAD BASED.
- 1.2 WASTES GENERATED FROM THE ABATEMENT OF THE AREA INDICATED WITH A DOTTED LINE ARE TO BE TREATED AS LEAD AND PCB BASED. ALL OTHER WASTES ARE TO BE TREATED AS LEAD ONLY WASTES.

