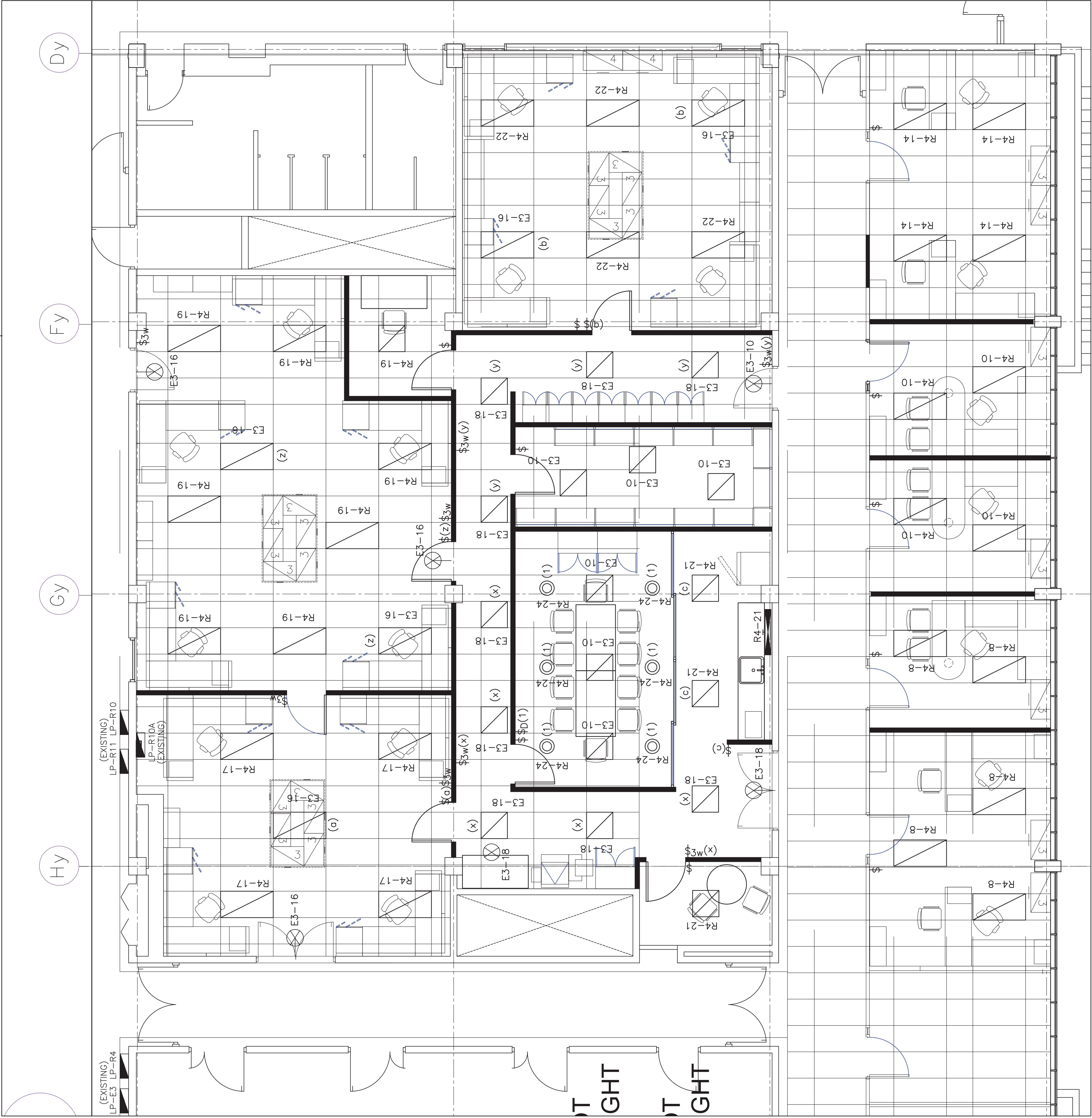


04 11 0 10 20 30 40 50 60 70 80 90 100 110 120 130 140 150 160 170 180 190 200 millimetres



1 NEW WORK – ELECTRICAL  
E-2  
SCALE: N.T.S.

DATE PLOTTED: YYYY-MM-DD PLOT SCALE: 1:?

CAD FILE:

- NOTES: – NEW LIGHTING PLAN:
- N1. THESE DRAWINGS SHALL BE READ IN CONJUNCTION WITH THE INTERIOR DESIGNER'S DRAWINGS FOR DIMENSIONS, MOUNTING HEIGHTS, CONSTRUCTION DETAILING, FINISHES AND OTHER RELATED DEMOLITION WORKS AND NEW CONSTRUCTION.
- N2. THE CIRCUITING SHOWN OR NOTED IN PART IS DIAGRAMMATIC INTENDED TO ILLUSTRATE GENERAL LIGHTING CIRCUIT ASSIGNMENT. ALL ELECTRICAL WORK SHALL BE DONE IN ACCORDANCE WITH THE CIRCUIT LOADS IN GENERAL ARE BASED ON MAXIMUM 80% OF THE PROTECTIVE DEVICE RATING FEEDING THE CONNECTED LOAD OF EACH CIRCUIT SHOWN. IT IS CONTRACTOR'S RESPONSIBILITY TO DETERMINE IF OTHER EXISTING LOADS ARE FED ON THE SAME CIRCUIT. IF ANY OTHER EXISTING LOADS ARE FED ON THE SAME CIRCUIT, THE CONTRACTOR SHALL BE RESPONSIBLE FOR THE REMOVAL OF EXISTING LOADS OR ADDITIONAL SPARE BREAKERS AFTER REMOVAL OR REMOVAL WORKS. UPDATE PANEL LOAD SCHEDULE ACCORDINGLY.
- N3. ELECTRICAL CONTRACTOR TO IDENTIFY AND REUSE EXISTING CIRCUITS AS NOTED AND WILL BE CONSIDERED TO BE FEEDING A GROUP OR SET OF LIGHTING FIXTURES AS ASSIGNED. ALL THE CIRCUIT NUMBERS ASSIGNED ARE ASSUMED TO BE SPARE BRANCH CIRCUIT BASED ON INTERIORS AND DEMOLITION WORKS. ELECTRICAL CONTRACTOR IS RESPONSIBLE TO DETERMINE ALL AVAILABLE EXISTING BRANCH CIRCUITS.
- N4. EACH NEW LIGHTING BRANCH CIRCUIT SHOULD HAVE A RATING OF 15 AMPERES. 1-POLE BRANCH BREAKER.
- N5. ALL NEW LIGHTING LOAD CIRCUITS WILL BE FED FROM EXISTING LIGHTING PANEL IDENTIFIED AS "LP-R4". THE PANEL RATING IS 120/208 VOLT SYSTEM.
- N6. REMOVE AND REPLACE EXISTING CEILING LIGHTING IN ROOM R-257. CONNECT TO EXISTING LIGHTING CIRCUIT AND CONTROL SWITCH. SEE OUR REFER TO DRAWING A-08 FOR LAYOUT.

- LUMINAIRE/FIXTURE SCHEDULE-NEW**
- UNDERSHELF FLUORESCENT LIGHT FIXTURE, 1-32W, T8, 120v; 1-7/8" SHALLOW DEPTH, BAKED WHITE ENAMEL; WITH INTEGRAL SWITCH.
- RECESSED DOWNLIGHT, 15-60W CFL, 120v, REFLECTOR: ONE PIECE ALZAK ALUMINUM; HOUSING: ALUMINUM 16ga WITH VENT HOLES; 8" APERTURE, PARABOLIC BLACK BAFFLE, COMPLETE WITH HOUSINGS AND OPEN TRIMS AND WITH DIMMABLE CFL TYPE OR LED LAMPS AND COMPATIBLE DIMMER SWITCH.
- RECESSED AND SURFACE MOUNTED LED, CEILING TROFFER, OPERATING VOLTAGE @ 90-230 VAC, 50-60HZ; ILLUMINATION @ 6800 lm INITIAL FOR 2 X 4 TROFFER; CCT @ 5000K; CRI @85; ILLUMINATION @ 3900 lm INITIAL FOR 2 X 2 TROFFER; CCT @ @ 5000K; CRI @85 SIZES: 2' X 4' X 6" NOMINAL SIZES: 2' X 2' X 2.5" NOMINAL STEEL HOUSING, POLYCARBONATE LENS.

04			
03			
02	Asif Comment	06-24-13	
01	File Rm Ltg. Adj	06-13-13	
revision			date

Do not scale drawings and conditions on site and immediately notify the Departmental Representative of all discrepancies.

A Detail No.  
B No. of detail  
C Where detail required  
drawing no. – where detail exists  
drawing no. – where detailed

project title  
Burlington  
BURLINGTON ONTARIO  
C.C.I.W. FISHERIES PROTECTION PROGRAM  
867 LAKESHORE ROAD

RENOVATIONS

drawing title  
PART PLAN – SECOND FLOOR  
NEW LAYOUT  
LIGHTING

ELECTRICAL

drawn by  
dessine par  
A.B.

designed by  
conc par  
AMB

approved by  
approuve par  
S.K.

bid  
offre  
N.C.B.

project manager  
administrateur  
de projet

project date  
date du projet  
2013-04-24

project no.  
no. du projet  
R.063337.001

drawing no.  
dessine no.  
E-2