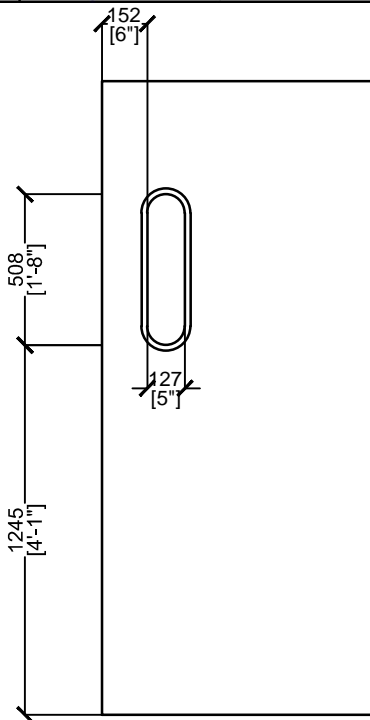
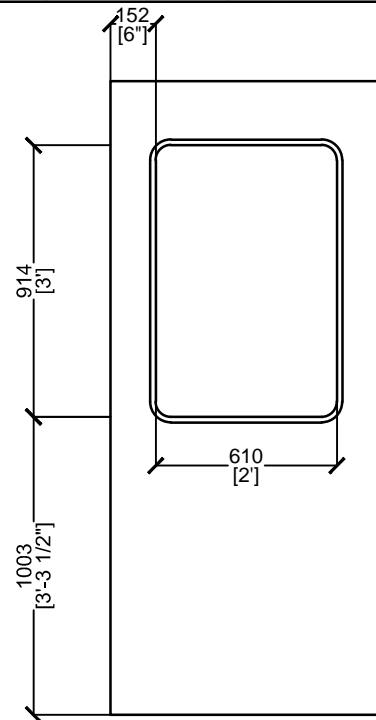


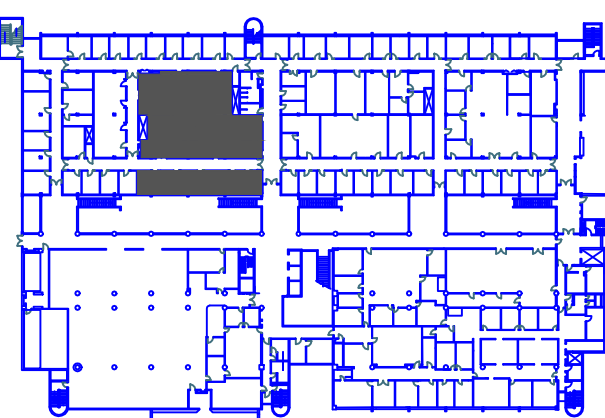
DOOR NO.	HAND	NEW OR EXISTING	GLAZING	HARDWARE TYPE EXISTING	HARDWARE TYPE NEW	NOTES
201A	RH	NEW	HALF GLAZED	PASSAGE	PASSAGE	DOOR TO BE LOCKED AND HANDLES TO BE REMOVED
201B	LH	EXISTING	VISION PANEL	PASSAGE	PASSAGE	DOOR TO BE LOCKED AND HANDLES TO BE REMOVED
201C	RH	EXISTING	VISION PANEL	PASSAGE	PASSAGE	DOOR TO BE LOCKED AND HANDLES TO BE REMOVED
202	LH	EXISTING		PASSAGE	LOCKSET	REPLACE PASSAGE SET WITH LOCKSET
207	LH	NEW			PASSAGE	REUSE DEMOLISHED DOOR AND FRAME AND INSTALL VISION PANEL TO MATCH BUILDING STANDARD
210A	RH	EXISTING	VISION PANEL	PASSAGE	PASSAGE	DOOR TO BE LOCKED AND HANDLES TO BE REMOVED
210B	LH	NEW	HALF GLAZED		PASSAGE	REUSE DEMOLISHED HALF GLAZED DOOR AND FRAME
210C	RH	EXISTING	VISION PANEL	PASSAGE	LOCKSET	REPLACE PASSAGE SET WITH LOCKSET
231	DBL	EXISTING		LOCKSET	LOCKSET	REMOVE WOOD ASTRAGAL
231A	RH	NEW			PASSAGE	
231B	RH	NEW	VISION PANEL	LOCKSET; BLANK COVER	LOCKSET	REPLACE BLANK COVER PLATE WITH KEYWAY
232	LH	EXISTING	SIDE LIGHT	LOCKSET; BLANK COVER	LOCKSET	REPLACE BLANK COVER PLATE WITH KEYWAY
233	RH	EXISTING	SIDE LIGHT	LOCKSET; BLANK COVER	LOCKSET	REPLACE BLANK COVER PLATE WITH KEYWAY
233A	RH	EXISTING		LOCKSET	LOCKSET	
234	RH	NEW		LOCKSET	PASSAGE	
235	LH	EXISTING	SIDE LIGHT	LOCKSET	LOCKSET	
236	RH	EXISTING	SIDE LIGHT	LOCKSET	LOCKSET	
240A	DBL	EXISTING		LOCKSET	LOCKSET	
240B	LH	NEW	HALF GLAZED		PASSAGE	REUSE DEMOLISHED HALF GLAZED DOOR AND FRAME
240C	LH	NEW	HALF GLAZED		PASSAGE	REUSE DEMOLISHED HALF GLAZED DOOR AND FRAME



ELEVATION:
VISION PANEL



ELEVATION:
HALF GLAZED



KEY PLAN

- P1** 64mm STEEL STUDS WITH 13mm ENVIROWALL PREFINISHED VINYL GYPSUM BOARD BOTH SIDES, FLOOR TO UNDERSIDE OF SUSPENDED CEILING. FINISH TO MATCH: ENVIROWALL COOL WHITE
- P2** 64mm STEEL STUDS WITH 13mm ENVIROWALL PREFINISHED VINYL GYPSUM BOARD BOTH SIDES, FLOOR TO UNDERSIDE OF SUSPENDED CEILING. WALL CAVITY TO BE FILLED WITH 50mm MINERAL WOOL SOUND BLANKET. FINISH TO MATCH: ENVIROWALL COOL WHITE
- P3** REPLACE EXISTING PREFINISHED CORK PANELS WITH PREFINISHED VINYL GYPSUM BOARD PANELS FLOOR TO UNDERSIDE OF SUSPENDED CEILING. WALL CAVITY TO BE FILLED WITH 50mm MINERAL WOOL SOUND BLANKET
- P4** 64mm STEEL STUDS WITH 13mm ANTI-MOULD GYPSUM BOARD, ONE SIDE, TAPED AND SANDED PRIMER/SEALER AND TWO FINISH COATS, FLOOR TO UNDERSIDE OF SUSPENDED CEILING.
- P5** GLASS WALL PANELS WITH 6mm TEMPERED GLASS USED WITH OVERLAPPING CEILING TRACK

NOTE: REINSTALL STORED CEILING TILES AFTER ALL WORK IN PLENUM IS COMPLETE. SUPPLY AND INSTALL REPLACEMENT TILES WHERE REQUIRED TO MATCH EXISTING

revision	date
04	
03	REVISE FINISHES 2013-07-08
02	ISSUE FOR TENDER 2013-06-28
01	99% SUBMISSION 2013-06-10

Do not scale drawings.
Verify all dimensions and conditions on site and immediately notify the Departmental Representative of all discrepancies.

A	Detail No.
B	No. du détail
C	drawing no. — where detail required dessin no. — où détail exigé
	drawing no. — where detailed dessin no. — où détaillé

project title
titre du projet
BURLINGTON Ontario
C.C.I.W. FISHERIES PROTECTION PROGRAM
867 LAKESHORE ROAD

RENOVATIONS

drawing title
titre du dessin
**PART PLAN — SECOND FLOOR
PARTITION PLAN**

drawn by
dessiné par
J.V.

designed by
conçu par
J.V.

approved by
approuvé par

bid
offre
N.G.

project manager
administrateur de projets
project date
date du projet
2013-04-24

project no.
no. du projet
R.063337.001

drawing no.
dessiné no.
A-02