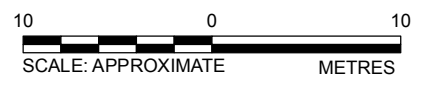


SOIL CRITERIA ¹ (mg/kg)		
Depth (m)	≤ 1.5 m	> 3.0 m
Benzene (B)	0.3	0.32
Toluene (T)	250	500 1500
Ethylbenzene (E)	300	600 670
Xylenes (X)	160	320 170
Fraction 1 Hydrocarbons (F1-BTEX)		
Fraction 2 Hydrocarbons (F2)	260	1000
Fraction 3 Hydrocarbons (F3)	1700	3500
Fraction 4 Hydrocarbons (F4)	3000	10000
Lead (Pb)	260	

- LEGEND**
- BOREHOLE
 - ⊙ SEPTIC TANK
 - ⊕ MONITORING WELL
 - ⊙ PP POWER POLE
 - ⊗ SOIL SAMPLE
 - GAS LINE
 - ⊕ VAPOUR WELL
 - POWER LINE
 - TELEPHONE LINE
 - BRUSHLINE
 - +++ TARGET AREA
 - APPROXIMATE PROPOSED NEW DEVELOPMENT FOOTPRINT

NOTE
 DATA IN GREEN INDICATES SOIL ANALYTICAL RESULTS BELOW CRITERIA.
 DATA IN RED INDICATED SOIL ANALYTICAL RESULTS ABOVE CRITERIA.
 SOIL SAMPLES WERE TAKEN ON MAY 15, 2005 AT A CONCENTRATION OF 0.05 MG/KG.
 LOCATIONS OF UNDERGROUND UTILITIES SHOWN ARE APPROXIMATE ONLY AND ARE NOT RELIABLE FOR CONSTRUCTION PURPOSES.

REFERENCE
 FIGURE WAS OBTAINED FROM DRAWING NO. 1018901603-SKT-V0005 2012 ENVIRONMENTAL INVESTIGATION, LOBSTICK MAINTENANCE COMPOUND, WASKESIU LAKE, SK. TETRATECH REPORT DATED FEB 27, 2013.
¹CANADIAN COUNCIL OF MINISTERS OF THE ENVIRONMENT (CCME), CANADIAN ENVIRONMENTAL QUALITY GUIDELINES, 2007, AND CCME, CANADA-WIDE STANDARD FOR PETROLEUM HYDROCARBONS (PHC) IN SOIL, JANUARY 2008, WITH VAPOUR INHALATION, ECOLOGICAL SOIL CONTACT, AND MANAGEMENT LIMIT PATHWAYS IN A COMMERCIAL LAND USE SETTING.
 NAD83 UTM ZONE 13



PROJECT		PUBLIC WORKS AND GOVERNMENT SERVICES CANADA - REMEDIATION DESIGN SPECIFICATIONS - LOBSTICK MAINTENANCE COMPOUND, PRINCE ALBERT NATIONAL PARK, SK	
TITLE		ESTIMATED EXTENTS OF SOIL IMPACTS AND TARGET AREA	
PROJECT		13-1362-0084	FILE No.
DESIGN	LMR	14/08/13	SCALE AS SHOWN
GIS	JK	14/08/13	REV. 0
CHECK	DS	14/08/13	
REVIEW			



FIGURE: 2