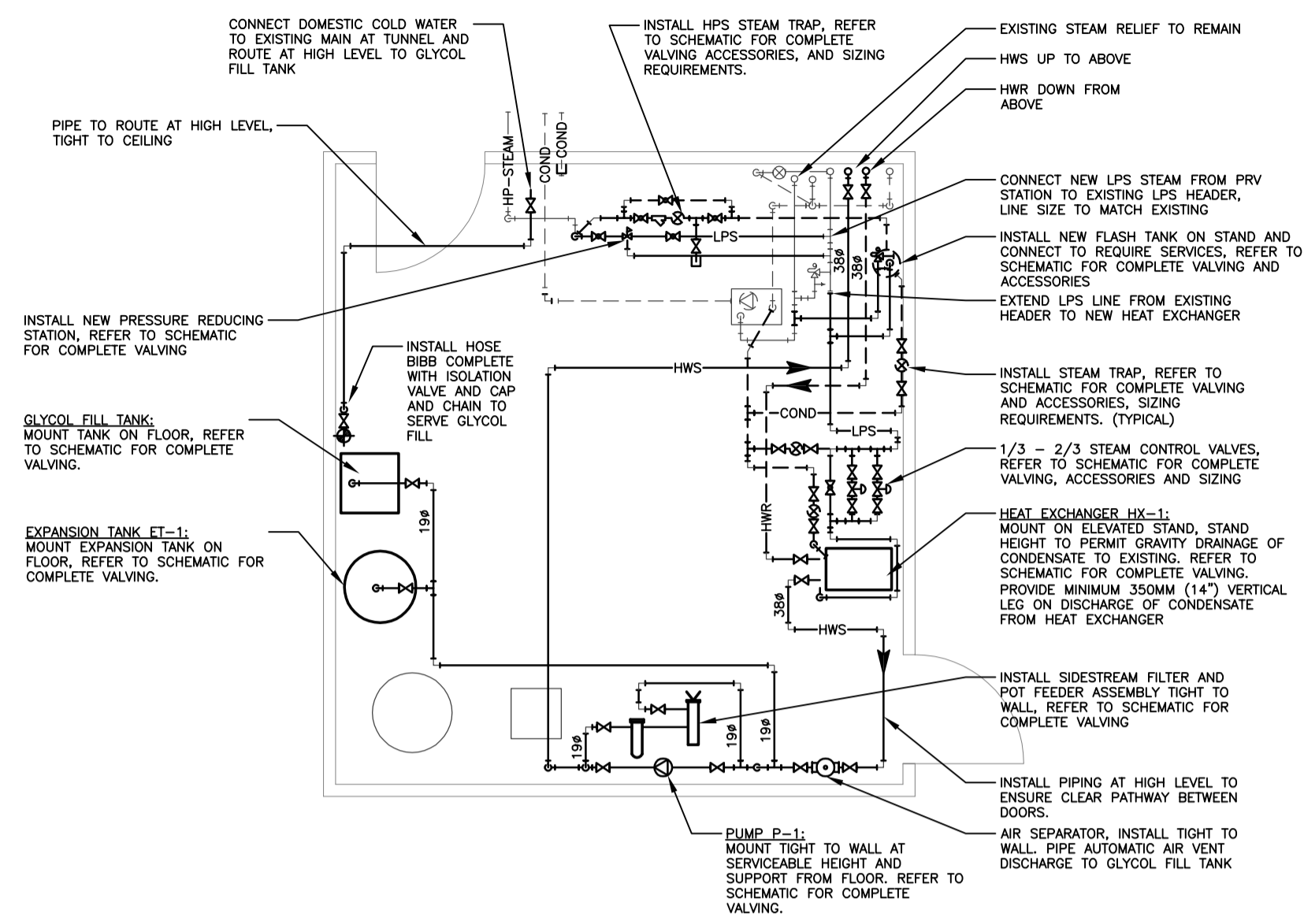
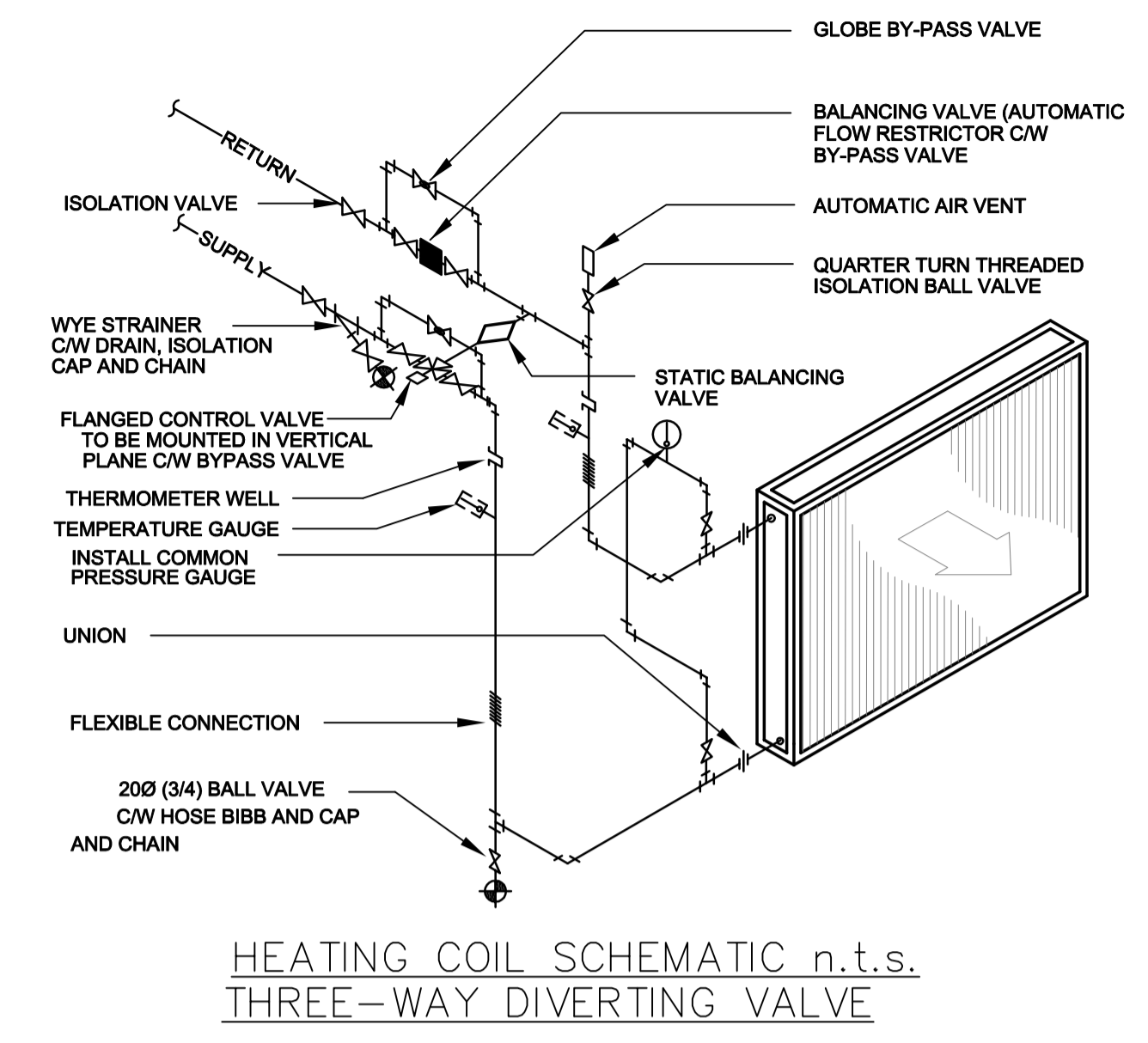


1 BASEMENT - DEMOLITION
1:50



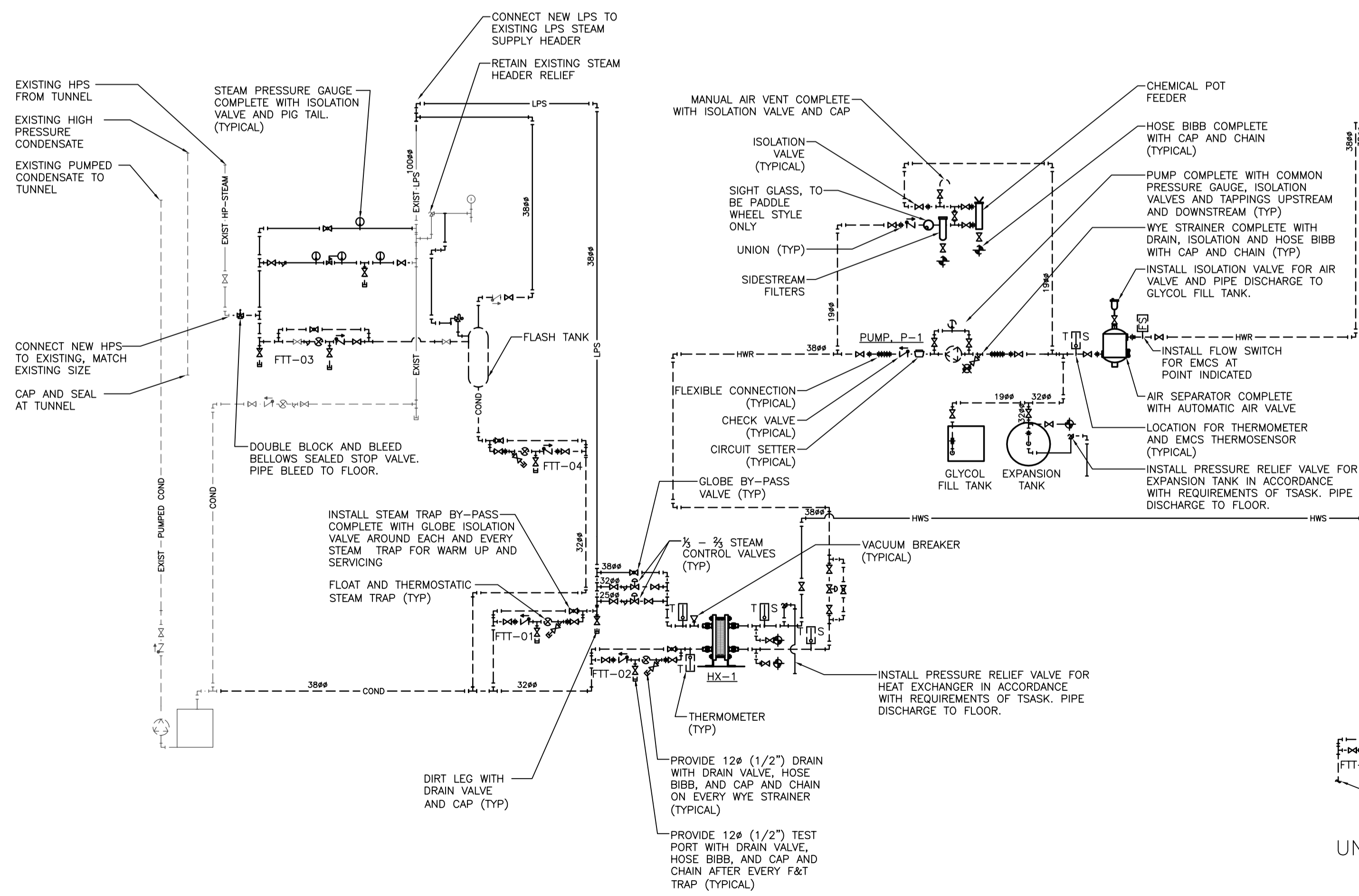
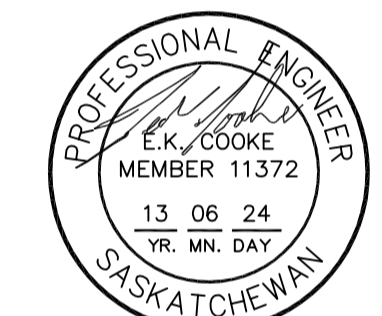
2 BASEMENT - REVISIONS
1:50



HEATING COIL SCHEMATIC n.t.s.
THREE-WAY DIVERTING VALVE

- NOTES
- DO NOT SCALE THIS DRAWING.
 - VERIFY ALL DIMENSIONS, DATUMS, AND LEVELS PRIOR TO COMMENCEMENT OF WORK AND REPORT ANY DISCREPANCIES TO THE CONSULTANT IMMEDIATELY.
 - VARIATIONS AND MODIFICATIONS TO WORK SHOWN IN THESE DRAWINGS SHALL NOT BE CARRIED OUT WITHOUT THE WRITTEN PERMISSION OF THE CONSULTANT.
 - ALL DRAWINGS AND SPECIFICATIONS AS INSTRUMENTS OF SERVICE ARE THE PROPERTY OF THE CONSULTANT AND MUST BE RETURNED UPON REQUEST.
 - COPYRIGHT FOR THIS DESIGN REMAINS WITH THE CONSULTANT.

Association of Professional Engineers & Geoscientists of Saskatchewan
CERTIFICATE OF AUTHORIZATION
 HDA ENGINEERING LTD.
 Number 0981
 Permission to Consult Held by:
 Discipline: Sk. Reg. No. Signature
 Mech. 6093 J. Downer



3 MECHANICAL SCHEMATIC
N.T.S.

STEAM TRAP SCHEDULE

TRAP#	TYPE	MAX CONDENSATE KG/HR (LBS/HR)	STEAM PRESSURE kPa (psi)	TRAP SIZE mm (in.)	DISCHARGE PIPE mm (in.)
FTT-01	F&T	DRIP LEG	55 (8)	19 (3/4")	19 (3/4")
FTT-02	F&T	272 (600)	55 (8)	19 (3/4")	32 (1-1/4")
FTT-03	IB	HP DRIP LEG	827 (120)	19 (3/4")	19 (3/4")
FTT-04	F&T	FLASH TANK	55 (8)	25 (1")	32 (1-1/4")
FTT-05	F&T	68 (150)	55 (8)	19 (3/4")	19 (3/4")

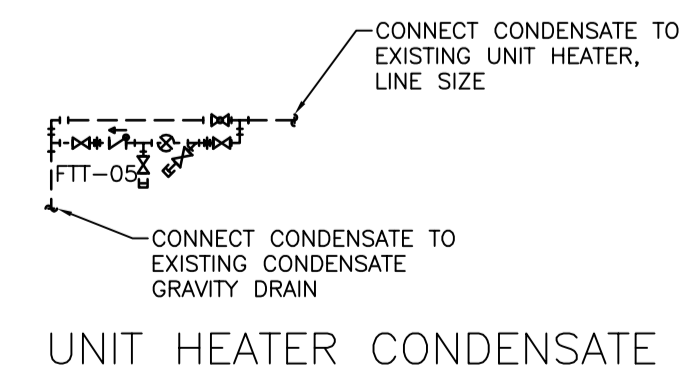
F&T = FLOAT AND THERMOSTATIC
IB = INVERTED BUCKET

STEAM CONTROL VALVE SCHEDULE

EQUIPMENT	TYPE	STEAM FLOW KG/HR (LBS/HR)	STEAM PRESSURE kPa (psi)	LINE SIZE mm (in.)
SERVED	1/3	31 (69)	55 (8)	64 (2-1/2")
HX-1	2/3	60 (132)	55 (8)	100 (4")

NOTE: ALL STEAM CONTROL VALVES SHALL BE FLANGED OR FIELD FITTED FLANGED TO MATCH SITE STANDARD TO FACILITATE MAINTENANCE. STEAM PRESSURE IS 8 psi NOT THE PRESSURE DROP ACROSS THE VALVE.

DESIGN CONDITIONS:
 HP-STEAM: 827 kPa(120 PSI)
 LPS: MAXIMUM 103 kPa (15 PSI)
 DESIGNED FOR 55 kPa (8 PSI)
 HWS: 87.8 DEG.C (190 DEG.F.),
 30% PROP GLYCOL / 70% H2O
 HWR 71.1 DEG.C. (160 DEG.F.)
 30% PROP GLYCOL / 70% H2O



UNIT HEATER CONDENSATE

REVISIONS	DESCRIPTION	DATE
1	ISSUED FOR TENDER	June 2013

A detail number
 B source drawing no.
 C detail on drawing no.

project title / titre du projet

TACTICAL TRAINING BUILDING RENOVATION
REGINA, SK

drawing title / titre du dessin

BASEMENT DEMOLITION, BASEMENT REVISIONS, AND SCHEMATICS

designed by / conçu par	TKC	
drawn by / dessiné par	TKC	
approved by / approuvé par	TKC	
PWGSC Project Manager / Administrateur de Projets TPSGC		
scale / échelle	AS SHOWN	sheet / feuille
project no. / projet no.	827364	M5
date / date	June 2013	OF 5