

ADDENDUM # 001

PROJECT NAME: Solarium Café – Canadian Museum of Nature

PROJECT #: 13-144

DATE: August 26, 2013

DISTRIBUTION:

Canadian Museum of Nature

Martin Leclerc

mleclerc@mus-nature.ca

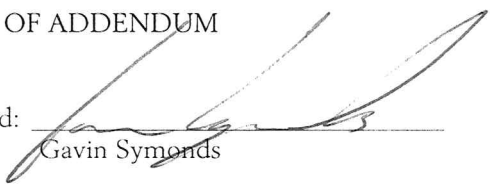
R.J. McKee Engineering

Sylvain Chenier

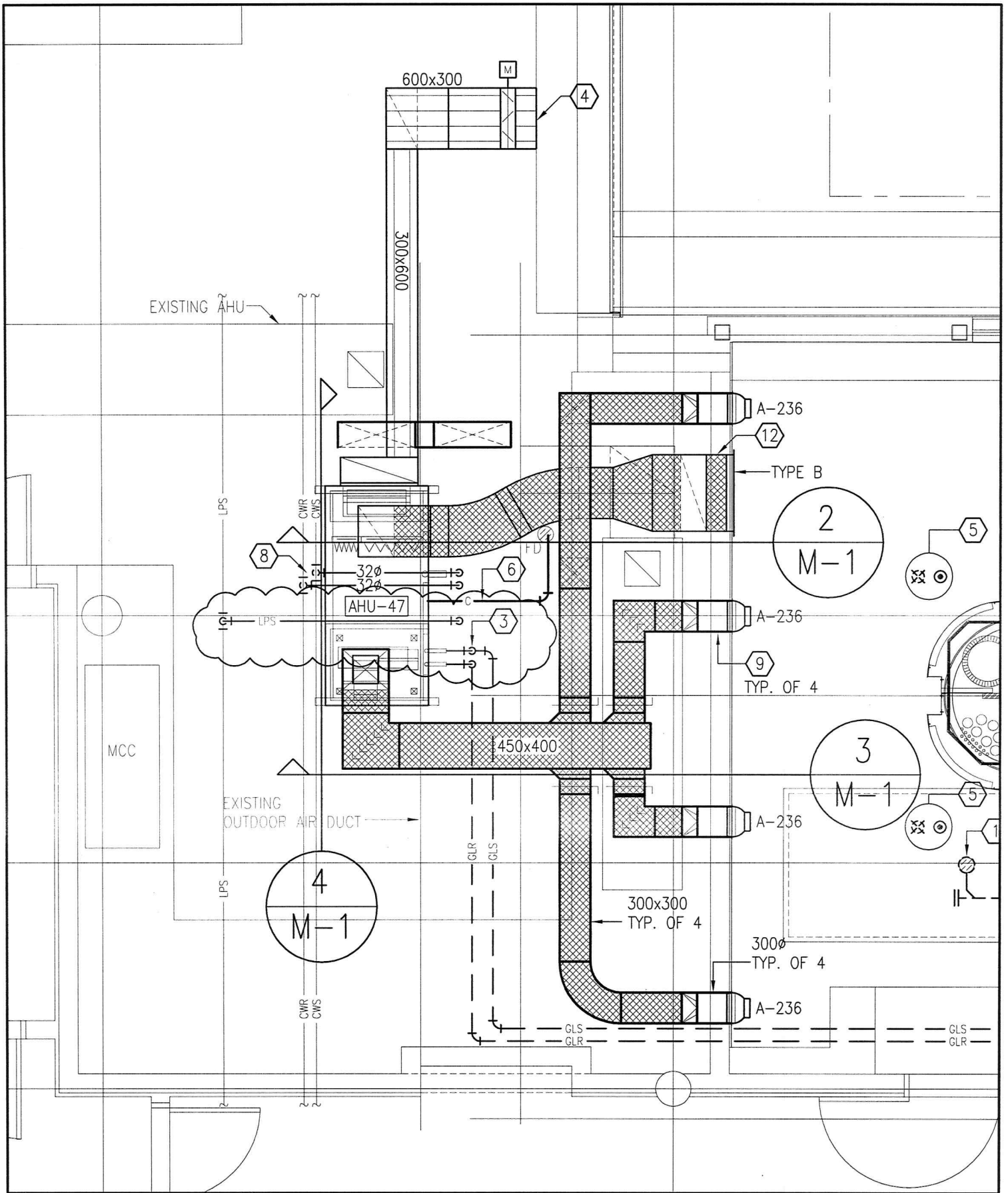
1. Reference drawings M-1, Issued for Tender – Jul 23/13, and SKM-ADD001.
 1. Revise location of Drawing Note #3 as shown in clouded area on drawing SKM-ADD001.
 2. Clarification: Refer to clouded area on drawing SKM-ADD001 for location of steam piping.

END OF ADDENDUM

Signed:


Gavin Symonds

Reviewed: Mech: Elec: Partner: 



R.J. McKEE
 ENGINEERING LTD.
 1785 Woodward Drive
 Ottawa, ON K2C 0P9
 CANADA
 Tel.: (613) 723-9585
 Fax.: (613) 723-9584
 www.mckeeottawa.ca

PROJECT: SOLARIUM CAFE-CANADIAN MUSEUM OF NATURE
 240 McLEOD STREET, OTTAWA, ONTARIO

DRAWING NAME: MECHANICAL: PART OF DRAWING M-1
 1/M-1 PLAN VIEW REVISION

SCALE:
 1:50
 DATE DRAWN
 AUG. 26, 2013
 DRAWING No.
 SKM-ADD001
 JOB No.
 13-144