

MECHANICAL EQUIPMENT SCHEDULE												
DESIGNATION	DESCRIPTION	LOCATION	KVA/HP	V-PHASE	LOAD	FLA	MCA	SOURCE	BREAKER	FEEDER	LOCAL DISCONNECT	REMARKS
F-CSR-1661	EXHAUST FAN	ROOF	0.25 HP	120V-1Ø	0.25hp	5.8	7.50	RP-BR	1P-15A	2#12 + BND	15A W.P.	NOTE 1
F-CSR-1662	EXHAUST FAN	ROOF	0.25 HP	120V-1Ø	0.25hp	5.8	7.50	RP-BR	1P-15A	2#12 + BND	15A W.P.	NOTE 1
F-CSR-1663	EXHAUST FAN	ROOF	0.25 HP	120V-1Ø	0.25hp	5.8	7.50	RP-BR	1P-15A	2#12 + BND	15A W.P.	NOTE 1
F-CSR-1664	EXHAUST FAN	ROOF	0.25 HP	120V-1Ø	0.25hp	5.8	7.50	RP-BR	1P-15A	2#12 + BND	15A W.P.	NOTE 1
F-CSR-1665	EXHAUST FAN	ROOF	0.25 HP	120V-1Ø	0.25hp	5.8	7.50	RP-BR	1P-15A	2#12 + BND	15A W.P.	NOTE 1
P-CSR-105	PUMP	MEZZANINE	0.25 HP	120V-1Ø	0.25hp	5.8	7.50	EPP-22A	1P-15A	2#12 + BND IN 21mmC	MMP	
P-CSR-106	PUMP	MEZZANINE	0.25 HP	120V-1Ø	0.25hp	5.8	7.50	EPP-22A	1P-15A	2#12 + BND IN 21mmC	MMP	
P-CSR-G107	PUMP	MEZZANINE	F.H.P.	120V-1Ø	-	0.7	-	RP-BR	1P-15A	2#12 + BND IN 21mmC	5-15R RECEPT.	

NOTES:

- NEW EXHAUST FANS, F-CSR-1661 TO F-CSR-1665, TO BE SERVICED FROM PANEL RP-BR LOCATED IN BOILER ROOM 2670. RE-USE CIRCUIT SPACES PREVIOUSLY USED FOR ELECTRIC HEATERS. PROVIDE NEW BREAKERS. TURN OVER EXISTING 2-POLE BREAKERS TO OWNER. RE-USE EXISTING CONDUIT WHERE POSSIBLE. EXTEND CONDUIT TO SUIT LOCATION OF EXHAUST FANS.
- SCHEDULE VALUES ARE PROVIDED TO ALLOW FOR PRICING ONLY. PRIOR TO ORDERING ELECTRICAL EQUIPMENT THE CONTRACTOR IS TO CONFIRM THESE VALUES WITH MECHANICAL SHOP DRAWINGS AND NAMEPLATE VALUES AND MAKE ADJUSTMENTS TO ELECTRICAL CIRCUIT SUPPLY, CONTROL AND PROTECTION AS NECESSARY

LEGEND

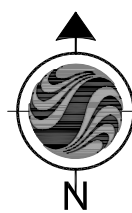
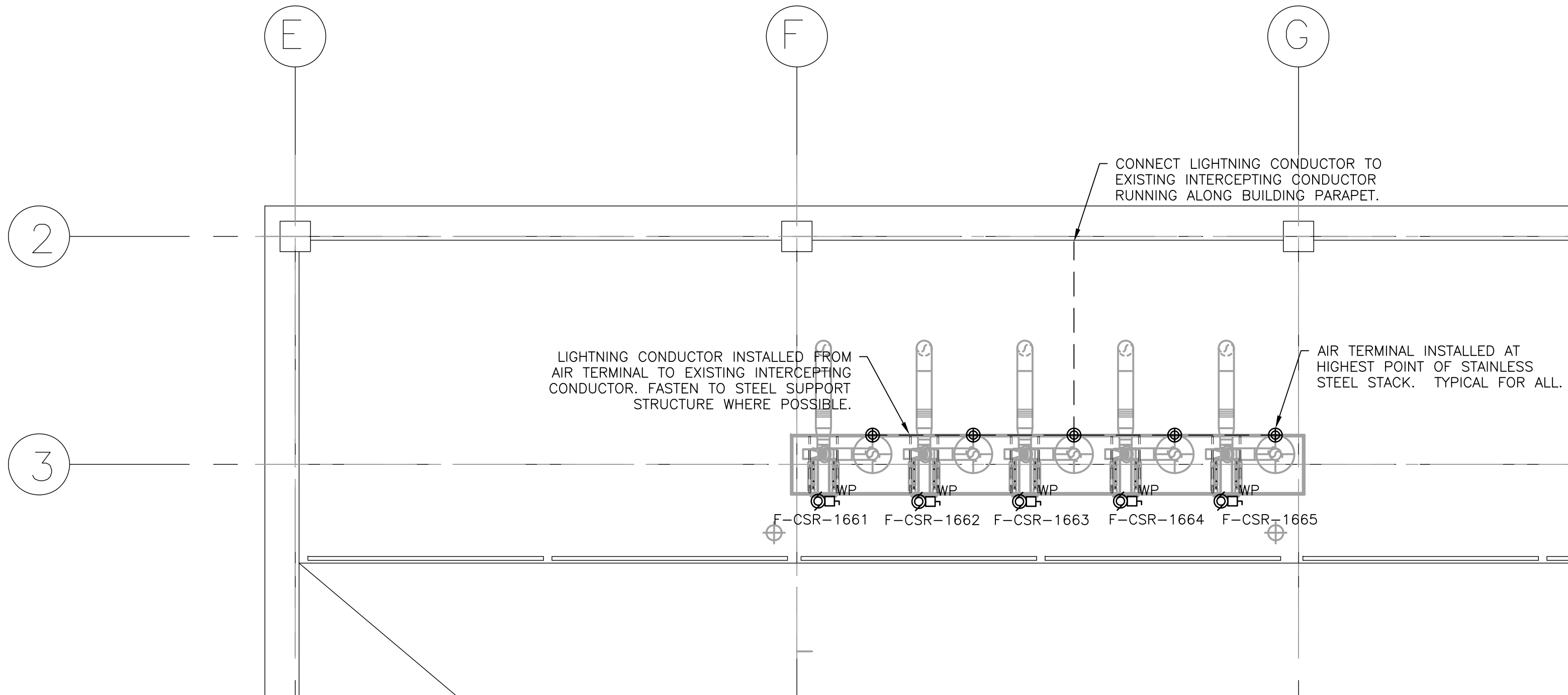
- LINE VOLTAGE SWITCH
- SURFACE MOUNT LUMINAIRE
- FIRE DETECTOR
- MOTOR CONNECTION C/W DISCONNECT (WP TO DENOTE WEATHER PROOF)
- JUNCTION BOX
- PUSHBUTTON (EMERGENCY HELP BUTTON)
- 5-15R RECEPTACLE
- AIR TERMINAL
- LIGHTNING CONDUCTOR

GENERAL NOTES

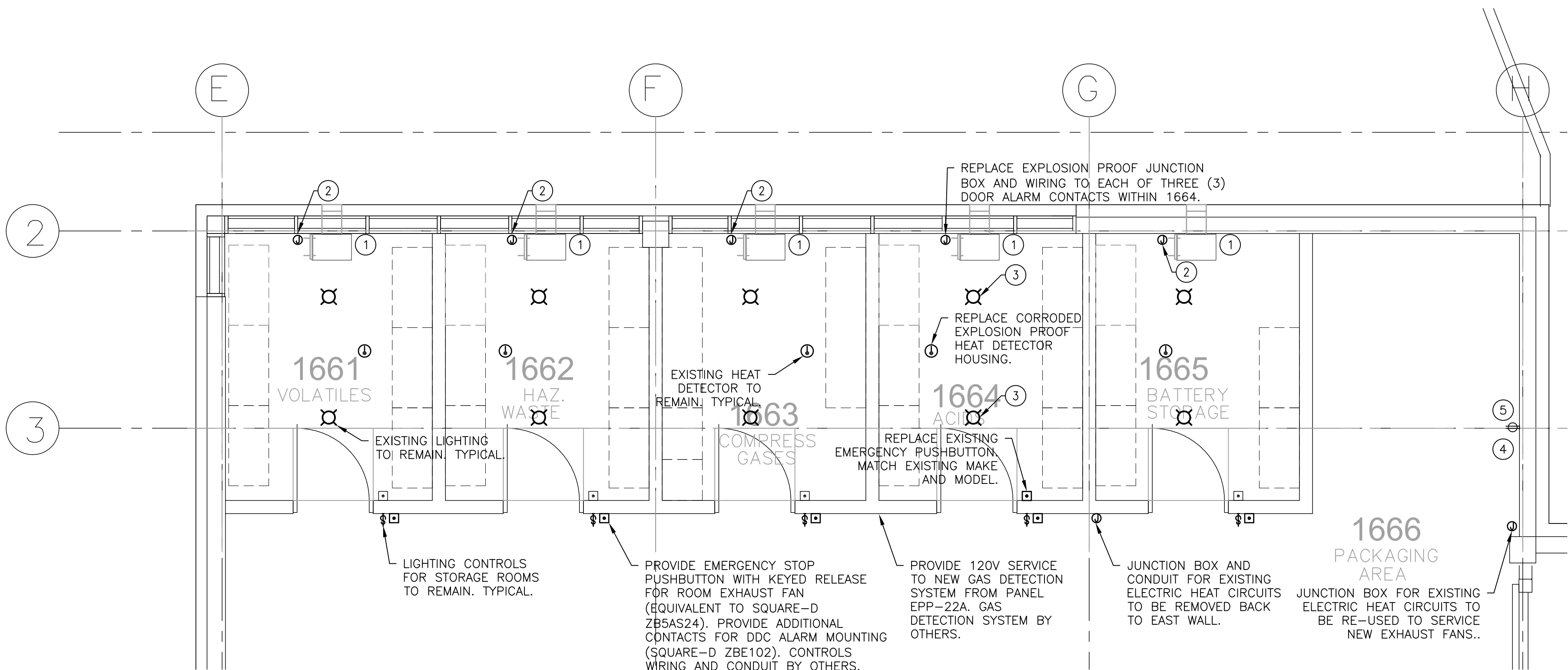
- LIGHTING FIXTURES WITHIN STORAGE ROOMS TO REMAIN UNLESS NOTED OTHERWISE ON PLANS (CROUSE-HINDS EV264).
- EMERGENCY HELP BUTTONS WITHIN STORAGE ROOMS TO REMAIN UNLESS NOTED OTHERWISE ON PLANS.
- FIRE DETECTORS WITHIN STORAGE ROOMS TO REMAIN UNLESS NOTED OTHERWISE ON PLANS.
- SHELF GROUNDING BARS AND CLAMPS TO REMAIN.
- ALL FITTINGS AND JUNCTION BOXES LOCATED WITHIN STORAGE ROOMS SHALL BE EXPLOSION-PROOF. INSTALLATION METHODS TO CONFORM WITH REQUIREMENTS OF CLASS I ZONE 1 AS OUTLINED IN SECTION 18 OF THE CANADIAN ELECTRICAL CODE.
- PANEL CIRCUIT NUMBERS TO BE DETERMINED ONSITE.

KEYNOTES

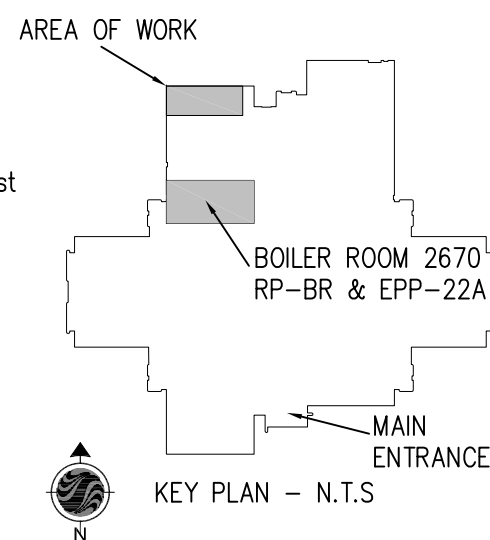
- REMOVE EXISTING 240V 3KW ELECTRIC HEATER. DEMOLISH ELECTRICAL INFRASTRUCTURE BACK TO COMMON JUNCTION BOX ON EAST WALL OF ROOM 1666. REMOVE WIRING BACK TO SOURCE. ALL WALL PENETRATIONS AND CONDUIT FASTENER LOCATIONS WITHIN ROOM SHALL BE SEALED AND PAINTED.
- REPLACE GASKET ON EXPLOSION PROOF JUNCTION BOX FOR BLOW-OUT DOOR ALARM CONTACTS.
- REPLACE CORRODED SCREWS IN LIGHT FIXTURE HOUSING WITH STAINLESS STEEL SCREWS.
- PROVIDE NEW 120V SERVICE TO PUMPS, P-CSR-105 AND P-CSR-106, FROM PANEL EPP-22A LOCATED IN BOILER ROOM 2670. PROVIDE LOCAL MANUAL MOTOR STARTER. ON/OFF CONTROL FROM DDC.
- PROVIDE NEW 120V SERVICE TO PUMP, P-CSR-G107, FROM PANEL RP-BR LOCATED IN BOILER ROOM 2670.



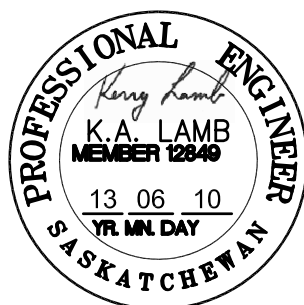
2 PARTIAL ROOF PLAN  
SCALE: 1:50



1 PARTIAL MAIN FLOOR PLAN  
SCALE: 1:50



0 500 1000 1500 mm SCALE 1:50



Association of Professional Engineers & Geoscientists of Saskatchewan			
CERTIFICATE OF AUTHORIZATION			
Stantec Consulting Ltd.			
NUMBER : C969			
PERMISSION TO CONSULT HELD BY:			
DISCIPLINE	SASK. REG. NO.	SIGNATURE	
ELECTRICAL	12849	<i>K.A. Lamb</i>	



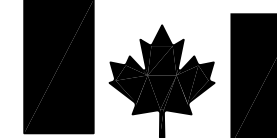
STANTEC JOB N.O. 113300648

Stantec Consulting Ltd.  
100 - 75 - 24th Street East  
Saskatoon, Sk.  
S7K 0K3  
Tel. 306.667.2500  
Fax. 306.664.6639  
www.stantec.com

10-06-2013	TENDER
24-05-2013	100%_REVIEW
10_05-2013	50%_REVIEW
DATE	REVISION

Drawn/Dessine	JD
DWG. Title/Titre Dessin	ELECTRICAL NEW

Date/Date	2013.05.24
Scale/Echelle	1:50



Environment  
Canada  
Property Management  
District 2

Enthronement  
Canada  
Gestion de l'immobilier  
District 2

#11 INNOVATION BLVD  
SASKATOON, SK, S7N 3H5

DWG # / DESSIN #

E1

CHEMICAL ROOM ACID STORAGE RETROFIT