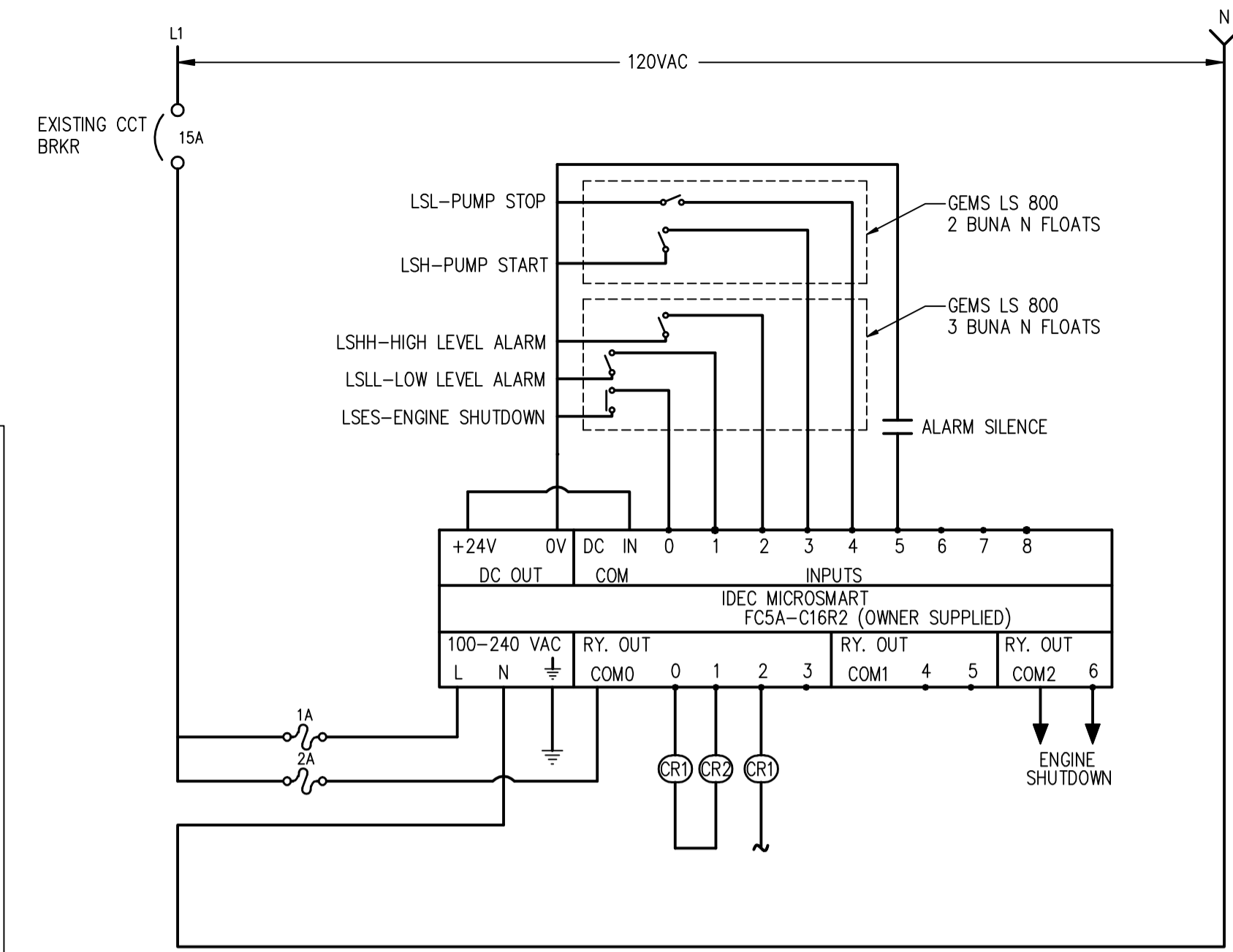


ELECTRICAL PLAN
SCALE 1:25

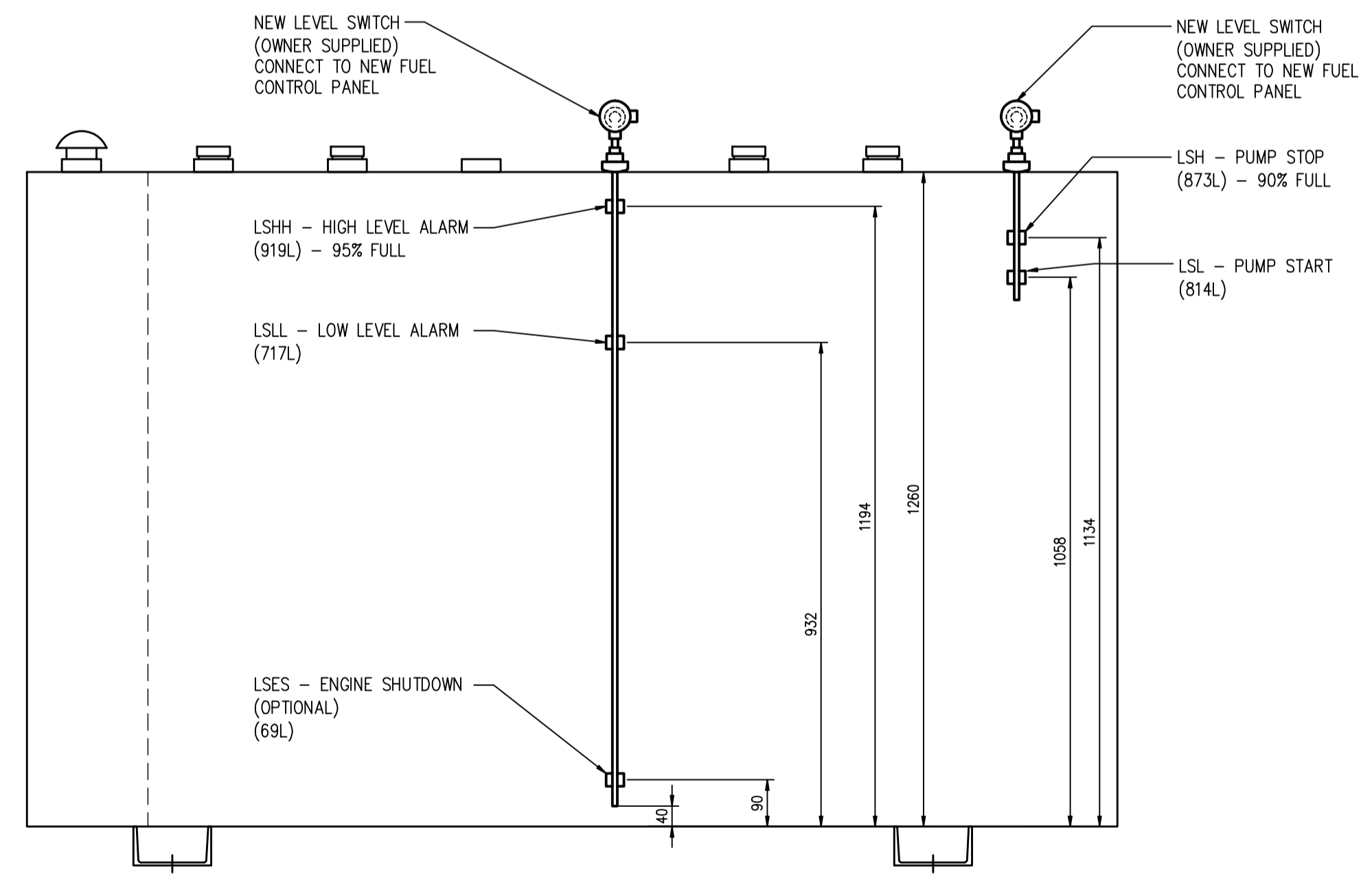


DAY TANK FUEL PUMP CONTROL AND PLC DIAGRAM
N.T.S.

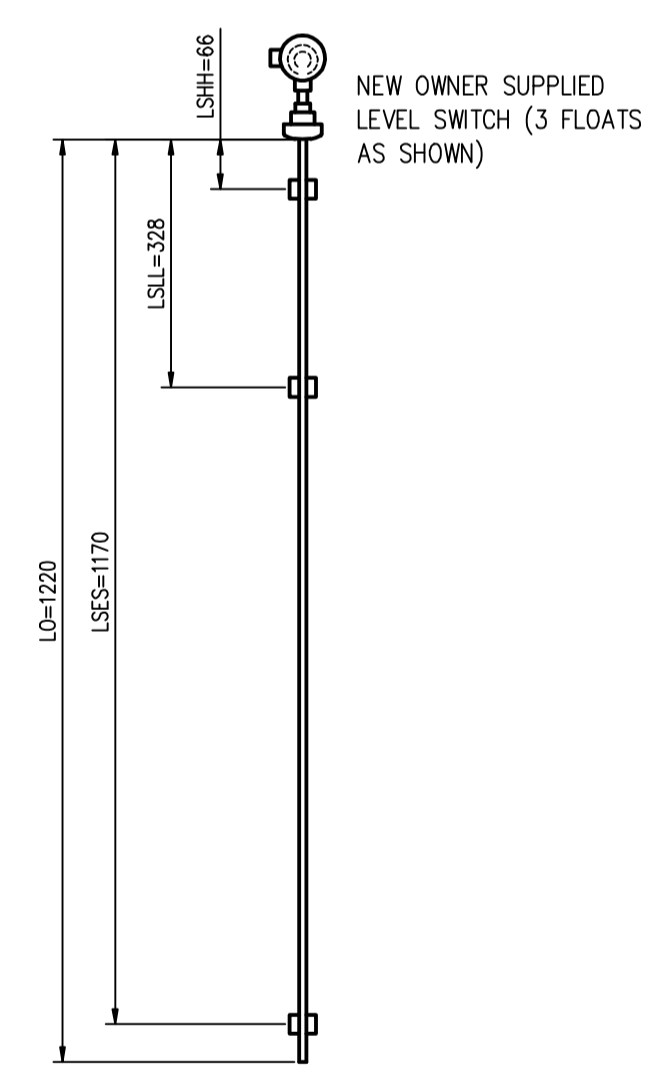
RELAYS
CR1 = PUMP MOTOR CONTACTOR
CR2 = ALARM (HORN)
CR3 = ALARM (STROBE)

NOTES
LSHH TO ALSO STOP PUMP
LSLL TO ALSO START PUMP

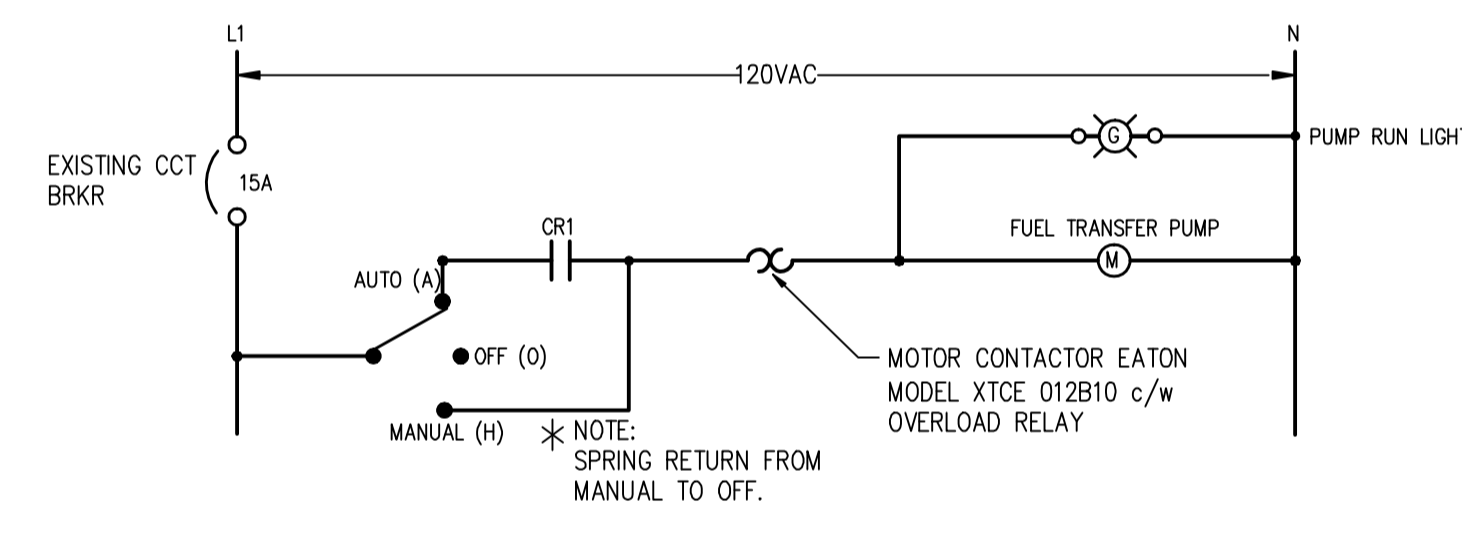
NOTE:
RE-USE EXISTING POWER SUPPLY TO EXISTING TRANSFER PUMP CONTROL PANEL.



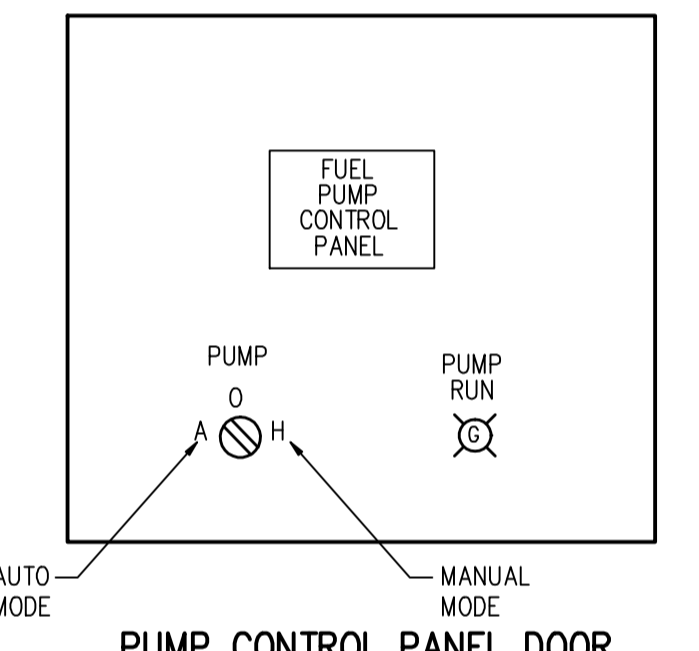
DAY TANK FUEL CONTROLS AND ALARM LEVELS
SCALE: 1:10



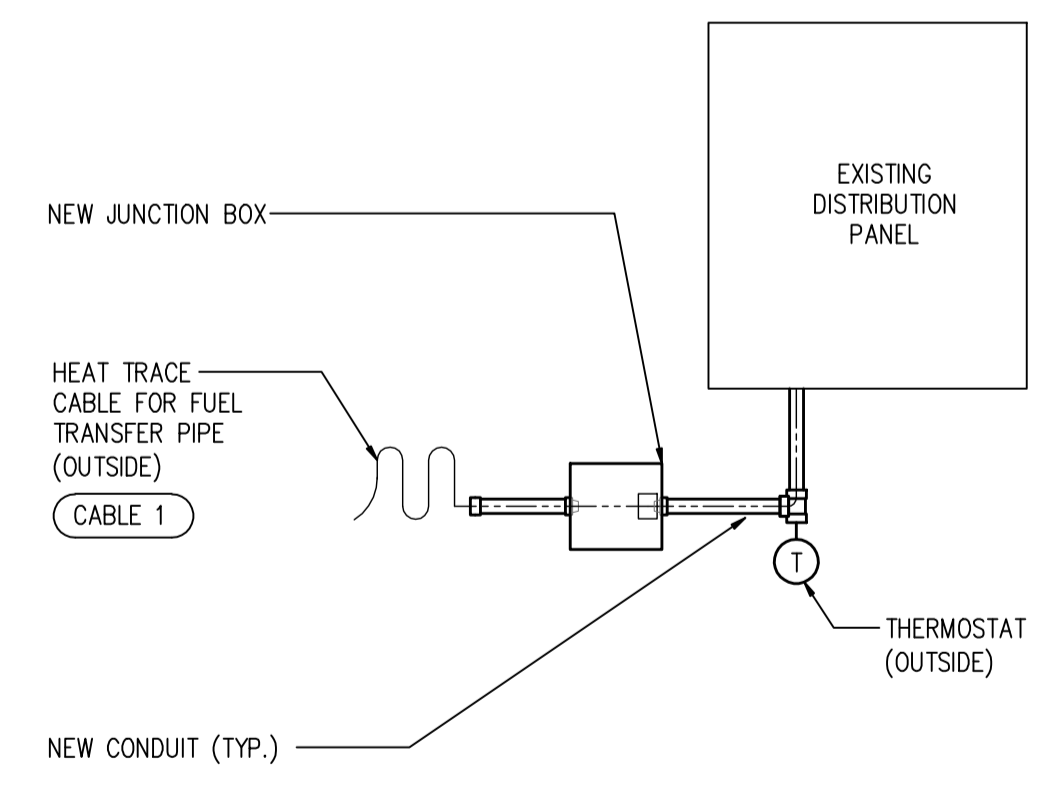
NEW DAY TANK PUMP CONTROL SWITCH
SCALE: 1:10



PUMP CIRCUIT
SCALE N.T.S.



PUMP CONTROL PANEL DOOR SCHEDULE
N.T.S.



HEAT TRACE CABLE SCHEMATIC
N.T.S.

- NOTES:**
- ALL MATERIAL AND EQUIPMENT MUST BE CSA CERTIFIED.
 - INSTALLATION TO COMPLY FULLY WITH CANADIAN ELECTRICAL CODE C22.1 LATEST EDITION IN PARTICULAR SECTION 20, 18, 10, 12.
 - EQUIPMENT INSTALLATION AND WRING TO COMPLY WITH MANUFACTURERS CERTIFIED INSTALLATION AND ERECTION INSTRUCTIONS.
 - MANUFACTURER'S PART No'S LISTED FOR CONVENIENCE. APPROVED EQUALS ARE ACCEPTABLE.

MORROW PROJECT #41-145

Morrow Engineering Ltd.
CONSULTING ENGINEERS
NORTH VANCOUVER, B.C.

FISHERIES AND OCEANS CANADA
HABITAT AND ENHANCEMENT BRANCH

DWG. NO.	REFERENCE DRAWINGS	NOTES	NO.	DATE	REVISIONS	DESIGNED	SCALE
						B.H.	
1	13-08-07	RE-ISSUED FOR TENDERING	1	13-08-07	RE-ISSUED FOR TENDERING	DRAWN	DATE
						C.K./D.C.	
0	12-11-26	ISSUED FOR TENDERING	P2	12-10-22	RE-ISSUED FOR CLIENT REVIEW	CHECKED	DRAWING NUMBER
						B.H.	
P1	12-10-03	ISSUED FOR CLIENT REVIEW	P1	12-10-03	ISSUED FOR CLIENT REVIEW	RECOMMENDED	REVISION
						APPROVED	
						APPROVED	

PINKUT CREEK SPAWNING CHANNEL
FUEL SYSTEM UPGRADES
PUMPHOUSE AREA
ELECTRICAL DETAILS