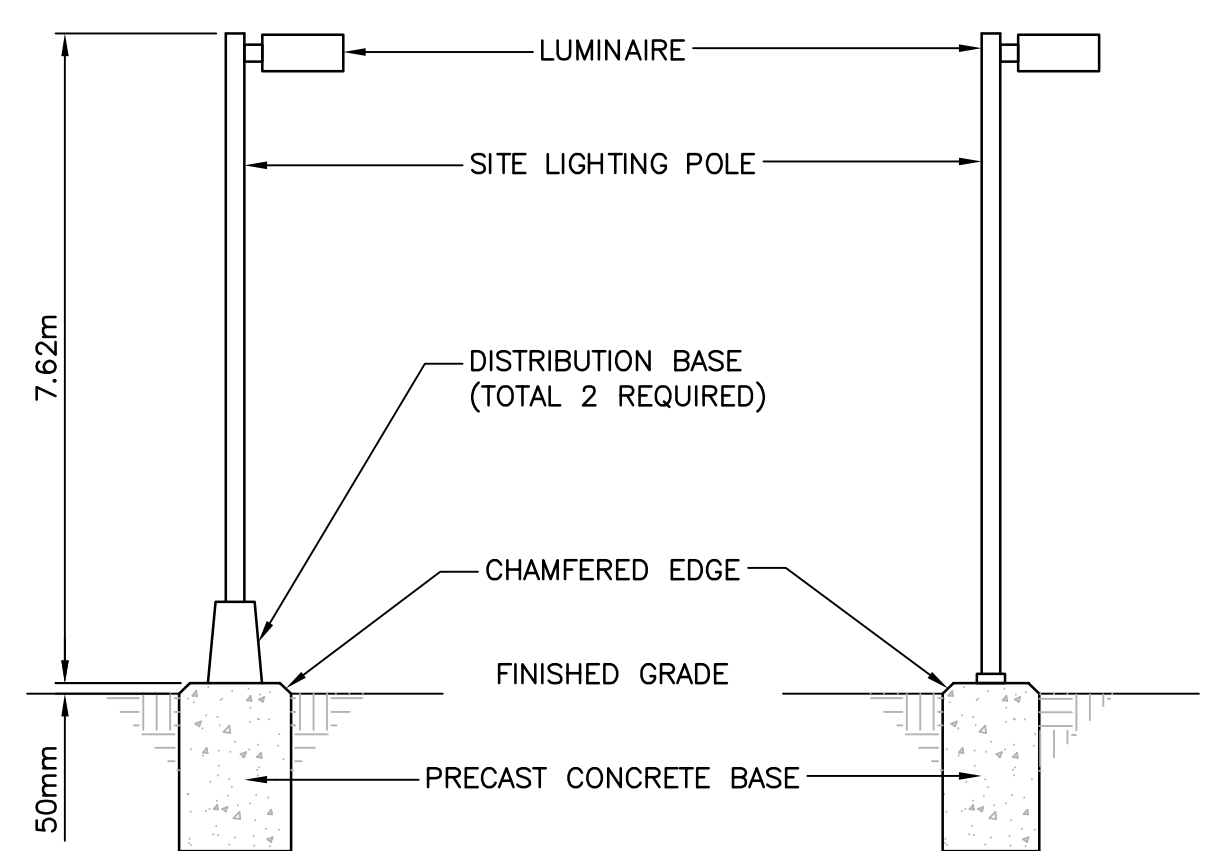


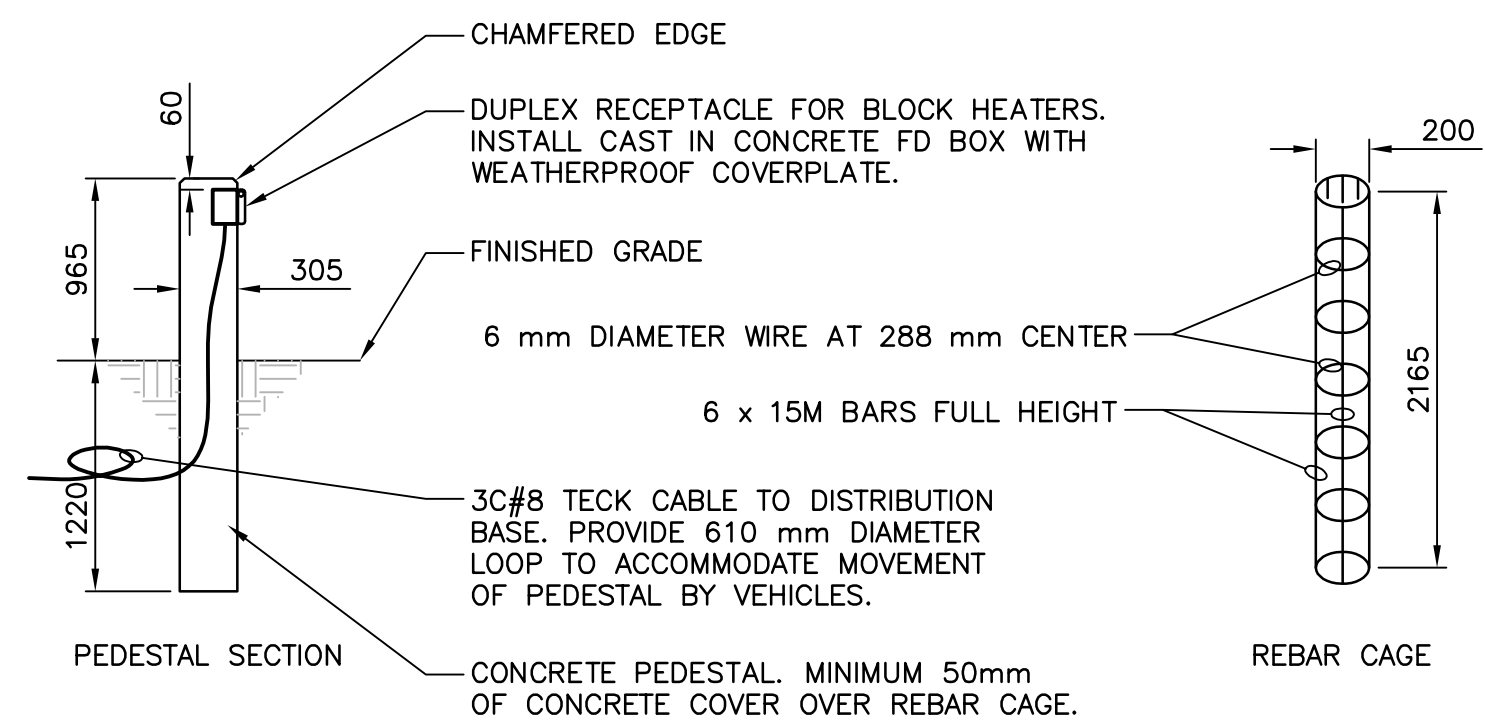
A INCOMING SERVICE DUCT SECTION
E-100 SCALE: NONE

B SITE SERVICES DUCT SECTION
E-100 SCALE: NONE

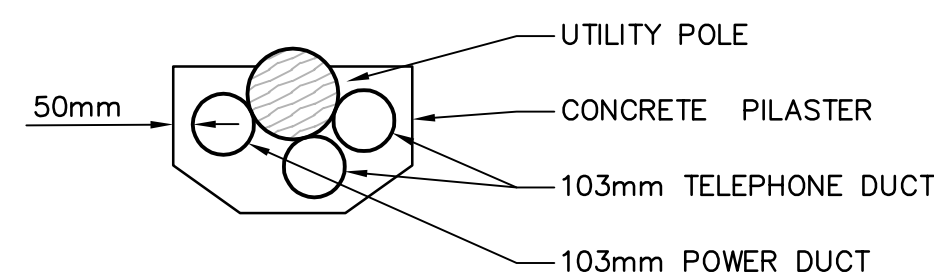


DETAIL NOTES:

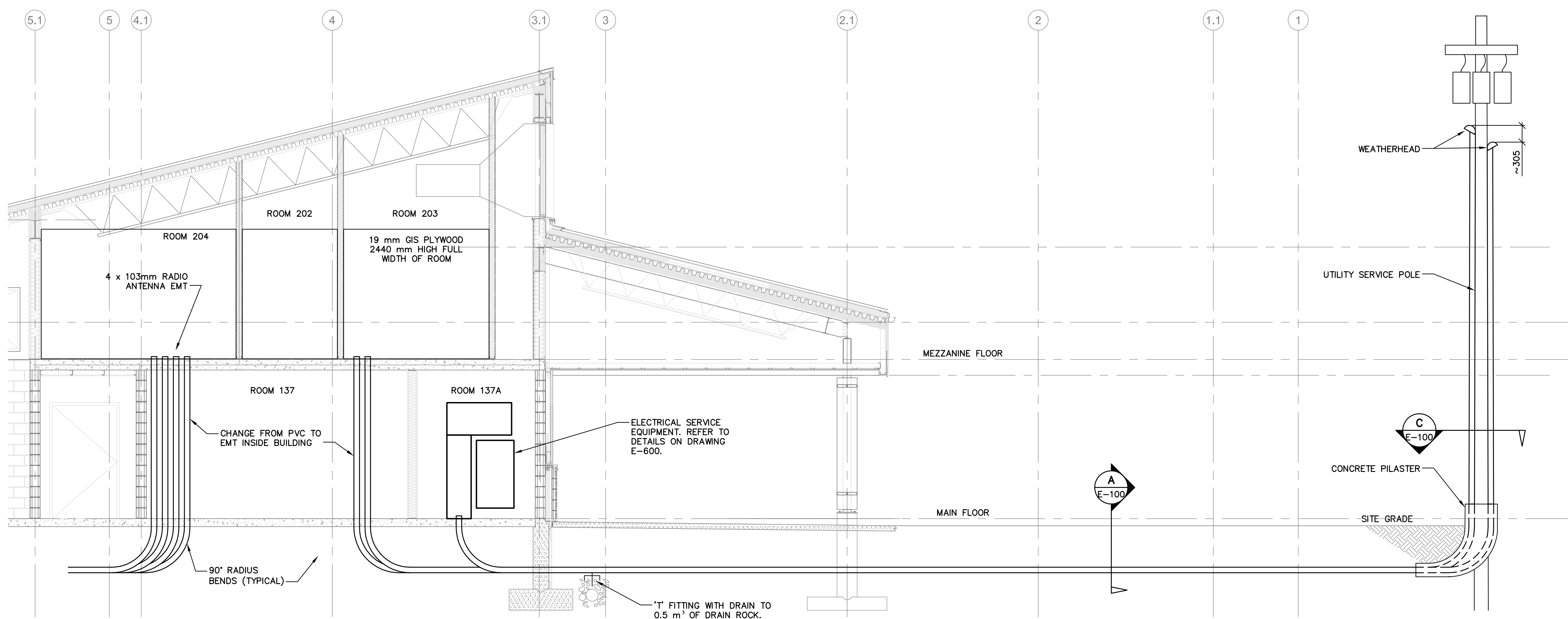
- DISTRIBUTION BASE TO BE NOMINAL 406mm SQ. AT BASE x 508 mm HIGH. BASE TO BE HOT DIPPED GALVANIZED PRIMED AND OVERPAINTED COLOUR TO MATCH POLES. BASE TO HAVE PADLOCKING CAPABILITY. PROVIDE MULTIWAY GROUND BAR IN BASE.
- PROVIDE BEST SERIES LOCK WITH 'WC' OPTION FOR DISTRIBUTION BASES. PROVIDE 2 KEYS TO OWNER.
- PRECAST BASES FOR POLES WITH DISTRIBUTION BASES SHALL BE STREET LIGHT POLE BASE TYPE 5 PER MASTER MUNICIPAL CONSTRUCTION DOCUMENTS.
- PRECAST BASES FOR POLES WITHOUT DISTRIBUTION BASES SHALL BE STREET LIGHT POLE BASE TYPE 4 PER MASTER MUNICIPAL CONSTRUCTION DOCUMENTS.
- ORDER POLE BASE FOR WEST DISTRIBUTION BASE WITH THE FOLLOWING CONDUIT STUBS HAVING LARGE RADIUS BENDS EXITING BASE, NOMINAL 780 mm BELOW GRADE.
 - 1 - 53mm - INCOMING
 - 1 - 53mm - OUTGOING FOR TECK CABLES NORTH
 - 1 - 63mm - OUTGOING FOR TECK CABLES NORTH
 - 1 - 53mm - OUTGOING FOR TECK CABLES SOUTH
 - 1 - 63mm - OUTGOING FOR TECK CABLES SOUTH
 - 2 - 27mm - FOR OUTGOING FOR AREA LIGHT POLES
- ADJUST CONDUIT SIZES AND COUNTS FOR SOUTH AND EAST DISTRIBUTION BASE PRECAST CONCRETE BASES.
- PROVIDE MANUFACTURED CABLE MARKERS ON EACH CONDUCTOR IN BASE OF POLE FOR EASY CIRCUIT IDENTIFICATION. WHITE PVC TAPE WITH HANDWRITTEN MARKINGS OR SIMILAR SCHEMES UNACCEPTABLE FOR PERMANENT MARKING (TYPICAL).



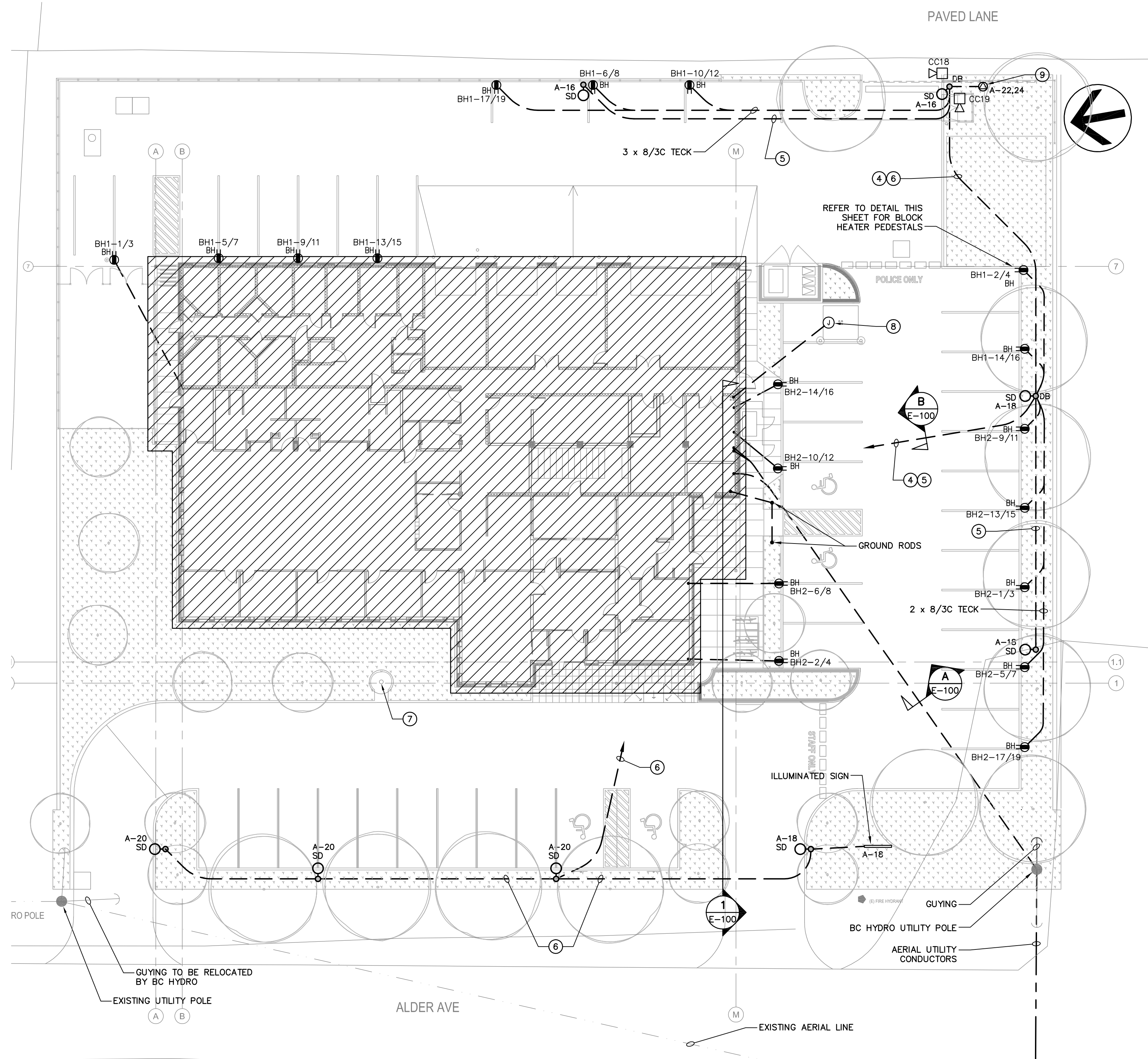
BLOCK HEATER RECEPTACLE PEDESTAL DETAIL
SCALE: NONE



C UTILITY SERVICE POLE SECTION
E-100 SCALE: NONE



ELECTRICAL SERVICE ENTRANCE SECTION
E-100 SCALE: 1:50



ELECTRICAL SITE PLAN
SCALE: 1:200

DRAWING NOTES

- PROVIDE DRAINAGE OF UNDERGROUND DUCTS TO CODE REQUIREMENTS (TYPICAL).
- UNLESS INDICATED OTHERWISE, MINIMUM WIRE SIZE FOR SITE LIGHTING AND BLOCK HEATERS SHALL BE #10 AWG.
- SET BLOCK HEATER PEDESTALS AND SITE LIGHTING POLES BACK FROM CURB BY 750 mm TO CENTRE OF BASE (TYPICAL).
- POWER DUCT SIZE TO SUIT, MINIMUM 53 mm.
- 35 mm DUCT FOR SITE LIGHTING POLES.
- 35 mm DUCT FOR SITE LIGHTING POLE MOUNTED CAMERAS.
- FLAG POLE. REFER TO ARCHITECTURAL AND CIVIL CONTRACT DOCUMENTS FOR GROUNDING REQUIREMENTS (1 x #3/0 GROUND).
- APPROXIMATE LOCATION OF FUTURE RADIO SYSTEM ANTENNA. INSTALL 4 x 103 mm DUCTS FROM ROOM 204 TO THIS LOCATION. COORDINATE INSTALLATION WITH DEPARTMENTAL REPRESENTATIVE. PROPERLY CAP, SEAL AND RECORD LOCATION FOR FUTURE CONNECTION.
- SLIDING SECURITY GATE.

ELECTRICAL AND TELEPHONE SERVICE

ELECTRICAL SERVICE:
PROVIDE 1 - 103 mm UNDERGROUND SERVICE ENTRANCE DUCT FROM BC HYDRO INSTALLED UTILITY SERVICE POLE AT SOUTHWEST CORNER OF THE SITE. PROVIDE CONCRETE PILASTER AT POLE BASE AS PER BC HYDRO & TELUS STANDARDS. PROVIDE PULL STRING IN DUCT.

TELEPHONE SERVICE:
PROVIDE 2 - 103 mm UNDERGROUND PVC DUCT THE UTILITY SERVICE POLE TO THE BUILDING. CONVERT UNDERGROUND DUCT TO RIGID GALVANIZED SCREWED STEEL CONDUIT INSIDE PILASTER AND EXTEND UP TO WEATHERHEAD JUST BELOW UTILITY TRANSFORMERS. PROVIDE WEATHERHEAD. CONCRETE PILASTER TO BE CONSTRUCTED TO TELUS STANDARD SA-100030 SHEETS 1, 2 & 3. PROVIDE NYLON PULL STRING IN DUCT.

SITE LIGHTING AND SIGN:
PROVIDE UNDERGROUND SERVICE TO SITE LIGHTING POLES AND ILLUMINATED SIGN AS INDICATED. SITE LIGHTING POLES AND LUMINAIRES TO BE PROVIDED UNDER DIVISION 26. SIGN TO BE SUPPLIED AND INSTALLED BY OTHERS BUT CONNECTED BY DIVISION 26. ALLOW FOR RETURN TO SITE FOLLOWING PROJECT COMPLETION TO MAKE FINAL CONNECTIONS SIGN.

ELECTRICAL DRAWING LIST

NUMBER	TITLE
E-100	ELECTRICAL SITE PLAN & DETAILS
E-200	MAIN FLOOR PLAN POWER & SYSTEMS
E-201	MAIN FLOOR PLAN LIGHTING
E-202	MEZZANINE FLOOR PLAN POWER, SYSTEMS & LIGHTING
E-500	ELECTRICAL SCHEDULES
E-600	POWER DISTRIBUTION SINGLE LINE DIAGRAM & ELECTRICAL DETAILS
E-601	LIFE SAFETY, DOOR, TELECOMMUNICATION AND RADIO SYSTEM DETAILS
E-602	COVE, ACCESS CONTROL & INTRUSION ALARM SYSTEMS DETAILS

SYMBOL LEGEND

ITEM	DESCRIPTION
LIGHTING	
○ R	INCANDESCENT, HID OR COMPACT FLUORESCENT LUMINAIRE R - INDICATES TYPE IN LUMINAIRE SCHEDULE b - INDICATES SWITCHING GROUP
○	INCANDESCENT, HID OR COMPACT FLUORESCENT LUMINAIRE, WALL MOUNTED
▬	FLUORESCENT LUMINAIRE SHADING - INDICATES UNSWITCHED 'NIGHT LIGHT'
○ DB	SITE LIGHTING POLE & LUMINAIRE SD - INDICATES TYPE IN LUMINAIRE SCHEDULE DB - INDICATES C/W DISTRIBUTION BASE
EMERGENCY AND EXIT LIGHTING	
BU-144W	EMERGENCY LIGHTING BATTERY UNIT BU-1 - INDICATES BATTERY UNIT ID 144W - INDICATES MINIMUM LOAD TO BE POWERED FOR 1 HOUR.
BU-1	EMERGENCY LIGHTING DOUBLE REMOTE HEAD BU-1 - INDICATES BATTERY UNIT ID
9	EMERGENCY LIGHTING DOUBLE REMOTE HEAD
EXIT SIGN	EXIT SIGN, WALL MOUNTED SHADING - INDICATES FACE ARROW - INDICATED DIRECTION OF EGRESS
EXIT SIGN	EXIT SIGN, CEILING MOUNTED
WIRING DEVICES	
\$ 344DEF-1 FRWMSV	SINGLE POLE TOGGLE SWITCH 3 - INDICATES THREE-WAY 4 - INDICATES FOUR-WAY o - INDICATES LUMINAIRE SWITCHING GROUP D - INDICATES DIMMER EF-1 - INDICATED MANUAL MOTOR SWITCH FOR FAN FR - INDICATES FRIDGE MW - INDICATES MICROWAVE SV - INDICATES SOLENOID VALVE SWITCH
BELL/BUZZER DEACTIVATION SWITCH	
⊕	SINGLE RECEPTACLE
WP	DUPLEX RECEPTACLE WP - INDICATES WEATHERPROOF
⊕	DUPLEX RECEPTACLE, MOUNTED ABOVE COUNTER
BH	DUPLEX RECEPTACLE, SPLIT-WIRED BH - INDICATES FOR BLOCK HEATER (WEATHERPROOF)
⊕	DUPLEX RECEPTACLE, SPLIT-WIRED, MOUNTED ABOVE COUNTER
⊕	DUPLEX RECEPTACLE, GROUND FAULT INTERRUPTER
⊕	DUPLEX RECEPTACLE, CSA 5-20R
⊕	RECEPTACLE MOUNTED WITHIN CEILING SPACE
⊕	QUADPLEX RECEPTACLE
MISCELLANEOUS POWER	
⊕	JUNCTION BOX
⊕	PULL BOX
⊕	DISCONNECT SWITCH
⊕	PANELBOARD
⊕	PHOTO-ELECTRIC CONTROLLER
MISCELLANEOUS POWER (EQUIPMENT BY OTHERS)	
⊕	DIRECT EQUIPMENT CONNECTION
⊕	MOTOR
⊕	ELECTRIC BASEBOARD HEATER
⊕	THERMOSTAT
⊕	TEMPERATURE SENSOR
⊕	HUMIDISTAT
⊕	INDOOR SERVICE POLE
⊕	POWERED DOOR OPERATOR ACTIVATION SWITCH
COMMUNICATIONS	
▽	VOICE OUTLET
▽	DATA OUTLET
▽ 1V20	VOICE/DATA OUTLET 1V20 - INDICATES NUMBER OF VOICE AND DATA JACKS
▽	VOICE/DATA OUTLET, MOUNTED ABOVE COUNTER
▽	CABLE TV OUTLET
▽	RADIO OUTLET
FIRE ALARM	
EXA	ANNUNCIATOR
⊕	MANUAL PULL STATION
⊕	SMOKE DETECTOR CAGE - INDICATES C/W WITH PROTECTIVE STEEL CAGE D - INDICATES DUCT SMOKE TYPE
⊕	STROBE LIGHT, CEILING MOUNTED
⊕	STROBE LIGHT, WALL MOUNTED
⊕	BELL
ACCESS CONTROL (EQUIPMENT BY OTHERS)	
⊕	CARD READER
⊕	ELECTRIC DOOR STRIKE
⊕	ELECTRIFIED MORTISE LOCK HINGE CONNECTION
INTRUSION DETECTION (EQUIPMENT BY OTHERS)	
⊕	KEYPAD
⊕ Z38	INTRUSION DETECTION MOTION SENSOR, CEILING MOUNTED Z38 - INDICATES DEVICE NUMBER
⊕	INTRUSION DETECTION MOTION SENSOR, WALL MOUNTED
⊕	DOOR CONTACT
VIDEO SURVEILLANCE (EQUIPMENT BY OTHERS)	
⊕ CC01	COVE CAMERA LOCATION CC01 - INDICATES DEVICE NUMBER
MISCELLANEOUS SYSTEMS	
⊕	DOOR BELL
⊕	DOOR SIGNAL SYSTEM SWITCH
⊕	LIMIT SWITCH
⊕	BELL DEACTIVATION SWITCH
⊕	DOOR CONTROL UNIT
⊕	DOOR SIGNAL SYSTEM PUSH BUTTON
⊕	INTERVIEW ROOM OUTLET BOXES
⊕	DRAWING NOTE
+1350	MOUNTING ELEVATION OF DEVICE A.F.F.

Consultant

MCW #3910

MCW Consultants Ltd.
1185 West Georgia St. Suite 1400, Vancouver, BC, V6E 4E5
E-Mail: mcw_van@mcw.com www.mcw.com
Tel: 604-687-1821 Fax: 604-683-5681
Vancouver Toronto Winnipeg Moncton Ottawa Halifax
Dauphin Kelowna Trail Saint John

Architect

number 10 number TEN
architectural group
112 - 826 North Park Dr.
Victoria BC Canada V8M 3B6
250.360.2306 / 250.360.2306
number10@telus.net

6		
5		
4	100% COMPLETE	2012/03/05
3	FOR COORDINATION	2012/02/17
2	99% SUBMISSION NOT FOR CONSTRUCTION	2011/03/31
1	60% SUBMISSION	2011/01/27

Revision Number: Description/Description Date/Date

Client/Client

Project title/Titre du projet

100 MILE HOUSE POLICE BUILDING

Consultant Signature Only

Designed by/Concept par
DC & PG

Drawn by/Dessiné par
PG

Project Manager/Administrateur du Projet

Drawing title/Titre du dessin


ELECTRICAL SITE PLAN & DETAILS

Project No./No. du projet	Sheet/Feuille	Revision no./ La Révision no.
-	E-100	0

1. PROVIDE CO. AND NO. GAS DETECTOR AT 1525 mm TO CENTRE ABOVE THE FLOOR. CRITICAL ENVIRONMENTAL TECHNOLOGIES MODEL.
2. JUNCTION BOXES TO BE INSTALLED BY MANUFACTURER PRESET THE UNIT TO PROVIDE COMPLETE ELECTRICAL CONNECTIONS PER SPECIFICATION. WIRE UNIT TO START EXHAUST FAN FROM FIRST STAGE ALARM.
3. COORDINATE WITH MECHANICAL CONTRACTOR REGARDING LOCATION OF SMOKE DETECTORS AND AIR DIFFUSERS TO ENSURE MINIMUM CLEARANCE PER SPEC.
4. JUNCTION BOX IN THE CEILING SPACE FOR WIRING INTO AN INDOOR SERVICE POLE FOR FEED TO MODULAR FURNITURE, ALL WIRING FROM THE CEILING SPACE SHALL BE THROUGH INDOOR SERVICE POLE. THE MODULAR FURNITURE AND TO THE OUTLET AS INDICATED ON THE DRAWING IS TO BE INSTALLED BY ELECTRICAL AND TEL/DATA CONTRACTORS. MAKE NECESSARY ALLOWANCE FOR EXTENSION LOCATION OF JUNCTION BOX FOR WIRING INTO THE INDOOR SERVICE POLE TO BE DETERMINED WHEN FURNITURE IS IN PLACE. CONNECT TO FURNITURE RACKWAYS USING SHIELDED Braid WITH ARD. USE SURFACE WIRING WITHOUT WIRING RACKWAYS USE SURFACE WIRING FOR POWER AND TELEPHONE/CABLE, REFER TO UNDERSIDE OF DESKTOP. ALLOW FOR RETURN TO SITE FOLLOWING SUBSTANTIAL PERFORMANCE TO WIRE FURNITURE OUTLETS.
5. RECEPTACLE IN CEILING FOR PROJECTOR
6. 27 mm CONDUIT FROM OUTLET BOX IN WALL BESIDE DESKUP RECEPTACLE UP INTO CEILING SPACE TO OUTLET BOX BESIDE DUPLEX RECEPTACLE. FOR CABLE FROM PROJECTOR. USE PULL STRING AND CLANK BUSHES STAINLESS STEEL COVERPLATE ON OUTLET BOXES.
7. DEPARTMENTAL REPRESENTATIVE WILL INSTRUCT CONTRACTOR IN EXACT LOCATION OF ANY CASE OUTLETS. IN ANY CASE OUTLET BOX IN CORNER SHALL BE LOCATED TIGHT IN CORNERS SO CAMERA HOUSING WILL COVER OUTLET BOX.
8. ROOM 109 HAS T-BAR EXHAUST. FOR OUTLETS AT ROOM 105 CONCEAL ROUGH-IN IN WALLS. ROUGH-IN FOR ROOM 105 ABOVE CEILING OF ROOM 109 AS APPROPRIATE.
9. WALL MOUNTED 300mm A.F.F..
10. AFTER-HOURS TELEPHONE SUPPLIED BY DEPARTMENTAL REPRESENTATIVE. ENCLOSURE BY GENERAL CONTRACTOR. CONDUIT BY ELECTRICAL CONTRACTOR. WIRE OR COMMUNICATION CONTRACTOR. REFER TO ARCHITECTURAL DRAWING A-602.
11. KEY SWITCH FOR DISCONNECTING FRONT POWERED DOOR OPERATOR.
12. CONTROL UNIT C/W POWER SUPPLY FOR DOOR CONTROL SYSTEM PROVIDED BY DOOR HARDWARE EQUIPMENT SUPPLIER. CO-ORDINATE EXACT LOCATION WITH THE OWNER AND OTHER TRADES PRIOR TO ROUGH-IN. LOCATE OUT OF REACH OF OPEN SLIDING WINDOW AT RECEPTION, BELOW COUNTER AS APPROPRIATE.
13. PROVIDE 6.0 m of cable slack for each cable (TOTAL of 4) IN THE CEILING SPACE. NEATLY BUNDLE EACH CABLE AND SUPPORT INDIVIDUALLY FROM ONE END OF THE ROOM. TERMINATE EACH CABLE TO CAT. 6A TERMINATION TO ALLOW TESTING.
14. COORDINATE WITH THE OWNER AND DETERMINE EXACT LOCATION FOR JUNCTION BOXES FOR INTERVIEW AND SECURITY PRIOR TO ROUGH-IN.
15. RADIO SYSTEM JUNCTION BOX. REFER TO DRAWING E-601 DETAILS.
16. ELECTRIC MOTOR FOR OVERHEAD DOOR WILL BE INSTALLED BY OTHERS. THE NECESSARY EQUIPMENT FOR OPERATION OF SUCH MOTOR SUCH AS CONTROL UNIT, KEY SWITCH, ETC. WILL BE SUPPLIED BY OTHERS. ELECTRICAL CONTRACTOR IS TO INSTALL AND WIRE.
17. CO-ORDINATE WITH THE OWNER AND DETERMINE EXACT LOCATION AND NECESSARY INFORMATION RE OPERATION AND WIRING. ALL WIRING TO BE INSTALLED IN CONDUIT.
18. PROVIDE 3 SPACES 27 mm CONDUITS OUT OF TOP OF PANEL INTO JUNCTION BOXES IN MEZZANINE ABOVE.
19. FLUSH MOUNTED OUTLET ABOVE THE COUNTER IN THE MILLWORK. REFER TO ARCHITECTURAL DETAIL 1 & 2 ON DRAWING A-602 FOR MOUNTING DETAILS.
20. COORDINATE WITH GENERAL CONTRACTOR FOR EXACT LOCATION OF POWERED DOOR CONNECTIONS.
21. FOR MICROWAVE, COORDINATE WITH ARCHITECTURAL DRAWINGS FOR LOCATION.

20. PROVISION FOR FUTURE, OUTLETS LEFT COILED ON CEILING SPACE. FOR TELEPHONE AND DATA DROPS TERMINATED ON JACK FOR TESTING PURPOSES.
21. PROVIDE 208V, 1-20, 240V RATED UNIT HEATER: STEPLPO "HV" SERIES OR EQUIVALENT SERIES BY OTHERS. PROVIDE LINE VOLTAGE ELECTRONIC THERMOSTAT FOR CONTROL. HONEYWELL T171-90 SERIES OR EQUIVALENT. PROVIDE 1/2" MIN. INSULATION. PROVIDE RATED FAN OF MOTORIZED EQUIPMENT. MOUNT UNIT HEATER AT NORMAL CEILING HEIGHT. SEE MANUAL.
22. FOR TEMPERATURE MONITORING OF SPRINKLER ROOM.
23. RECEPTACLE C/W SWITCH FOR GENERATOR CONNECTION, SURFACE MOUNTED. REFER TO DRAWING E-600 FOR DETAILS.
24. OUTLET BOX AND STAINLESS STEEL COVER FOR FUTURE CAMERA. CONDUIT AND PULL STRINGS TO ACCESSIBLE SPACE ABOVE.
25. WIRING TO DIVISION 23 CEILING FAN FROM ABOVE AND DOWN SIDE OF CEILING. PROVIDE COORD COORD COORD COORD COORD COORD COORD. AND GENERAL CONTRACTOR WHO WILL PROVIDE TRIM TO COVER WIRING. OUTLET BOX FOR FAN TO BE SHALLOW TYPE MOUNTED ON UNDERSIDE OF BEAM.

22. FOR TEMPERATURE MONITORING OF SPRINKLER ROOM.
23. RECEPTACLE C/W SWITCH FOR GENERATOR CONNECTION, SURFACE MOUNTED. REFER TO DRAWING E-600 FOR DETAILS.
24. OUTLET BOX AND STAINLESS STEEL COVER FOR FUTURE CAMERA. CONDUIT AND PULL STRING TO ACCESSIBLE SPACE ABOVE.
25. WIRING TO DIVISION 23 CEILING FAN FROM ABOVE AND DOWN SIDE OF GULLAW BEAM. COORDINATE INSTALLATION WITH DIVISION 23, AND GENERAL CONTRACTOR WHO WILL PROVIDE TRIM TO COVER WIRING. OUTLET BOX FOR FAN TO BE SHALLOW TYPE MOUNTED ON UNDERSIDE OF BEAM.



Consultant Signature Only

Designed by/Concept par

Drawn by/Dessiné par

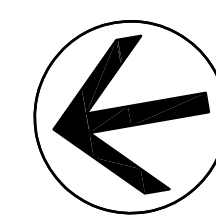
Project Manager/Administrateur de Projets

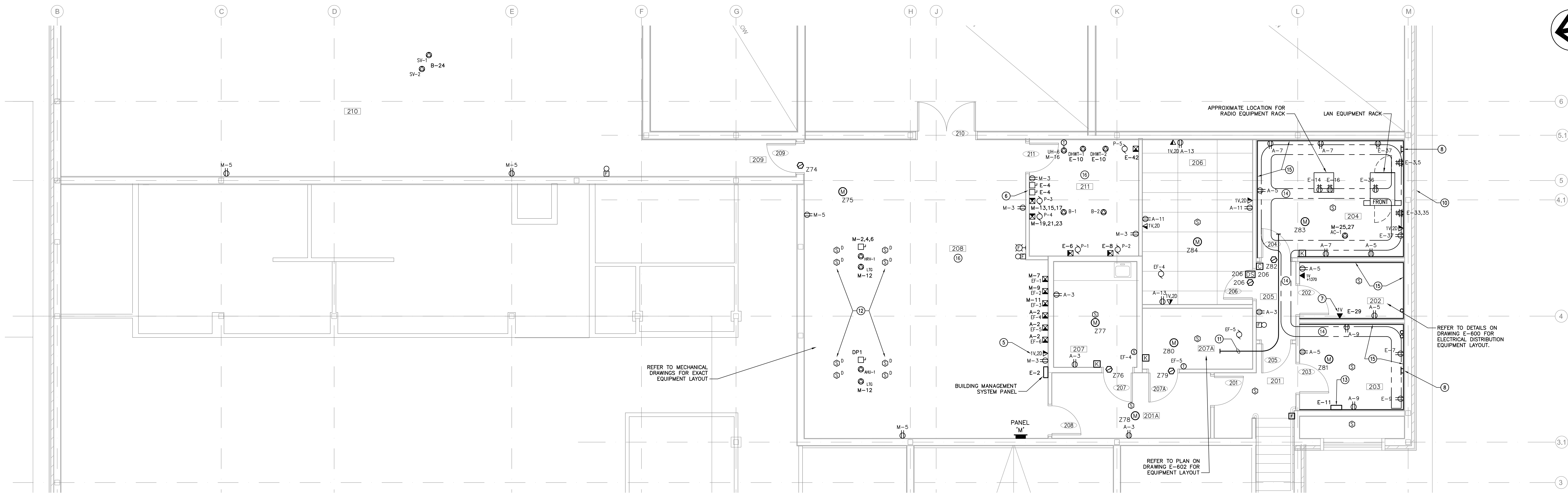
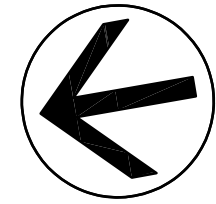
Drawing title/Titre du dessin

DRAWING NOTES:

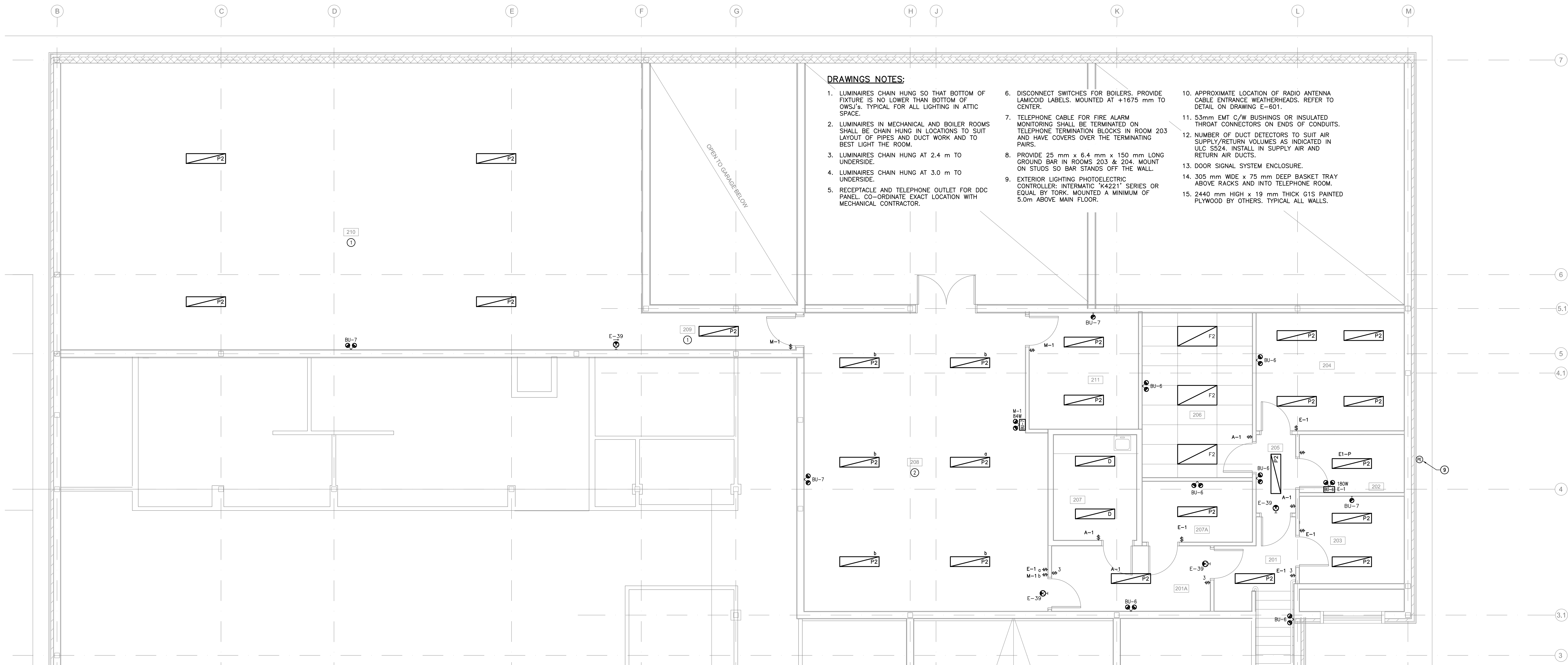
1. DOUBLE THROW LIGHT SWITCH C/W VANDAL PROOF COVER PLATE TYPICAL FOR CELLS. TOP POSITION FLUORESCENT LIGHT, BOTTOM POSITION NIGHT LIGHT. LOCATE SWITCHES CLEAR OF CELL DOOR OPEN POSITION.
2. REFER TO DETAIL 2 ON DRAWING E600 FOR TYPICAL CELL LAYOUTS.
3. EMERGENCY LIGHTING HEADS TO BE AIMED TO SHINE ON CELL DOOR LOCKS. HEADS C/W POLYCARBONATE VANDAL RESISTANT GUARD.
4. 5000K LAMPS IN THESE LUMINAIRES

MAIN FLOOR PLAN – LIGHTING



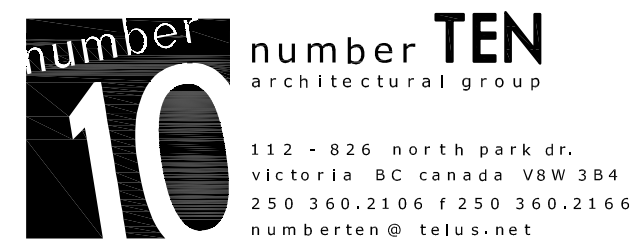


MEZZANINE PLAN - POWER & SYSTEMS
SCALE: 1:50



MEZZANINE PLAN - LIGHTING
SCALE: 1:50

Architect



6		
5		
4	100% COMPLETE	2012/03/05
3	FOR COORDINATION	2012/02/17
2	99% SUBMISSION NOT FOR CONSTRUCTION	2011/03/31
1	60% SUBMISSION	2011/01/27
Revision Number	Description/Description	Date/Date
Client/Client		

Project title/Titre du projet

**100 MILE HOUSE
POLICE BUILDING**

Consultant Signature Only

Designed by/Concept par

DC / PG

Drawn by/Dessiné par

PG

Project Manager/Administrateur de Projets

Drawing title/Titre du dessin

**MEZZANINE FLOOR PLAN
POWER, SYSTEMS & LIGHTING**

Project No./No. du projet

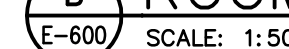
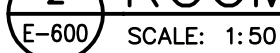
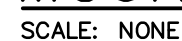
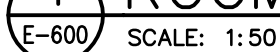
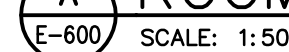
Sheet/Feuille

Revision no./
La Révision no.

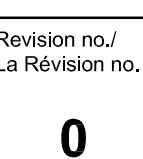
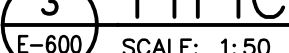
E-202

0





- NOTES:**
1. USE FIXINGS AT STRUCTURE INDEPENDENT OF T-BAR CEILING FIXINGS, REGARDLESS OF HOW CLOSE T-BAR CEILING FIXINGS MAY BE.
 2. RETAIN SERVICES OF A STRUCTURAL ENGINEER REGISTERED IN BRITISH COLUMBIA WITH THE ASSOCIATION OF PROFESSIONAL ENGINEERS AND GEOSCIENTISTS OF BRITISH COLUMBIA TO PROVIDE LETTER OF ASSURANCE WITH REGARD TO LUMINAIRE SUSPENSION. PROVIDE THIS LETTER OF ASSURANCE PRIOR TO SUBSTANTIAL PERFORMANCE.

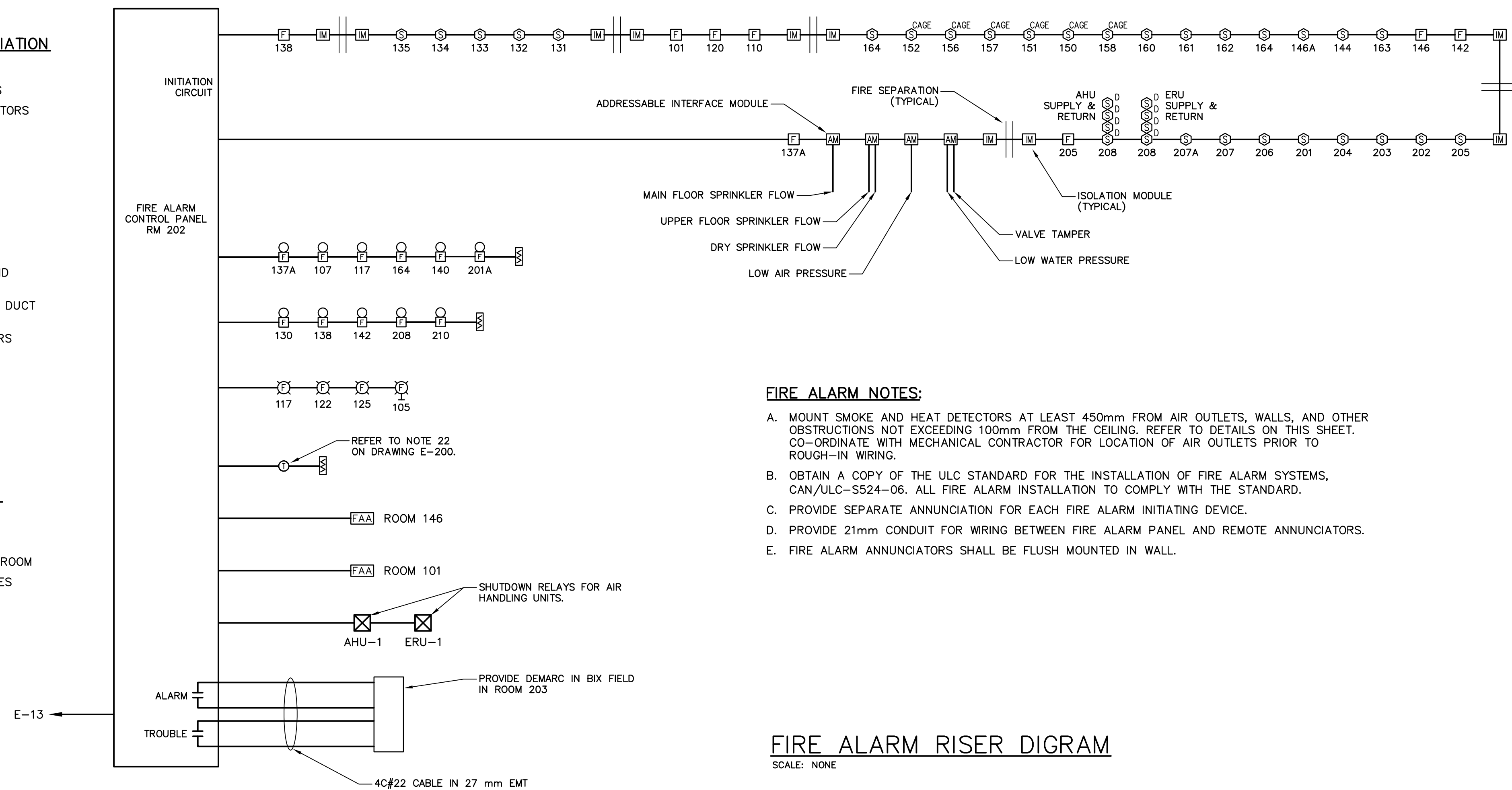


FIRE ALARM ZONE ANNUNCIATION

1. MAIN FLOOR PULL STATIONS
2. MAIN FLOOR SMOKE DETECTORS
3. CELLS CORRIDOR SMOKE DETECTORS
4. CELL 1 SMOKE DETECTOR
5. CELL 2 SMOKE DETECTOR
6. CELL 3 SMOKE DETECTOR
7. CELL 4 SMOKE DETECTOR
8. CELL 5 SMOKE DETECTOR
9. CELL 6 SMOKE DETECTOR
10. CELL AREA PULL STATION
11. AIR HANDLING UNIT SUPPLY AND RETURN FAN DUCT SMOKE
12. ERU SUPPLY AND RETURN FAN DUCT SMOKE
13. UPPER FLOOR SMOKE DETECTORS
14. UPPER FLOOR PULLSTATIONS
15. MAIN FLOOR SPRINKLER FLOW
16. UPPER LEVEL SPRINKLER FLOW
17. DRY SPRINKLER SYSTEM FLOW
18. SPARE
19. SPARE

SUPVISORY ANNUNCIATION

- A. LOW AIR PRESSURE
- B. LOW WATER PRESSURE
- C. LOW TEMPERATURE SPRINKLER ROOM
- D. VALVE TAMPER INCOMING VALVES
- E. VALVE TAMPER DRY SYSTEM
- F. VALVE TAMPER WET SYSTEM
- G. SPARE
- H. SPARE

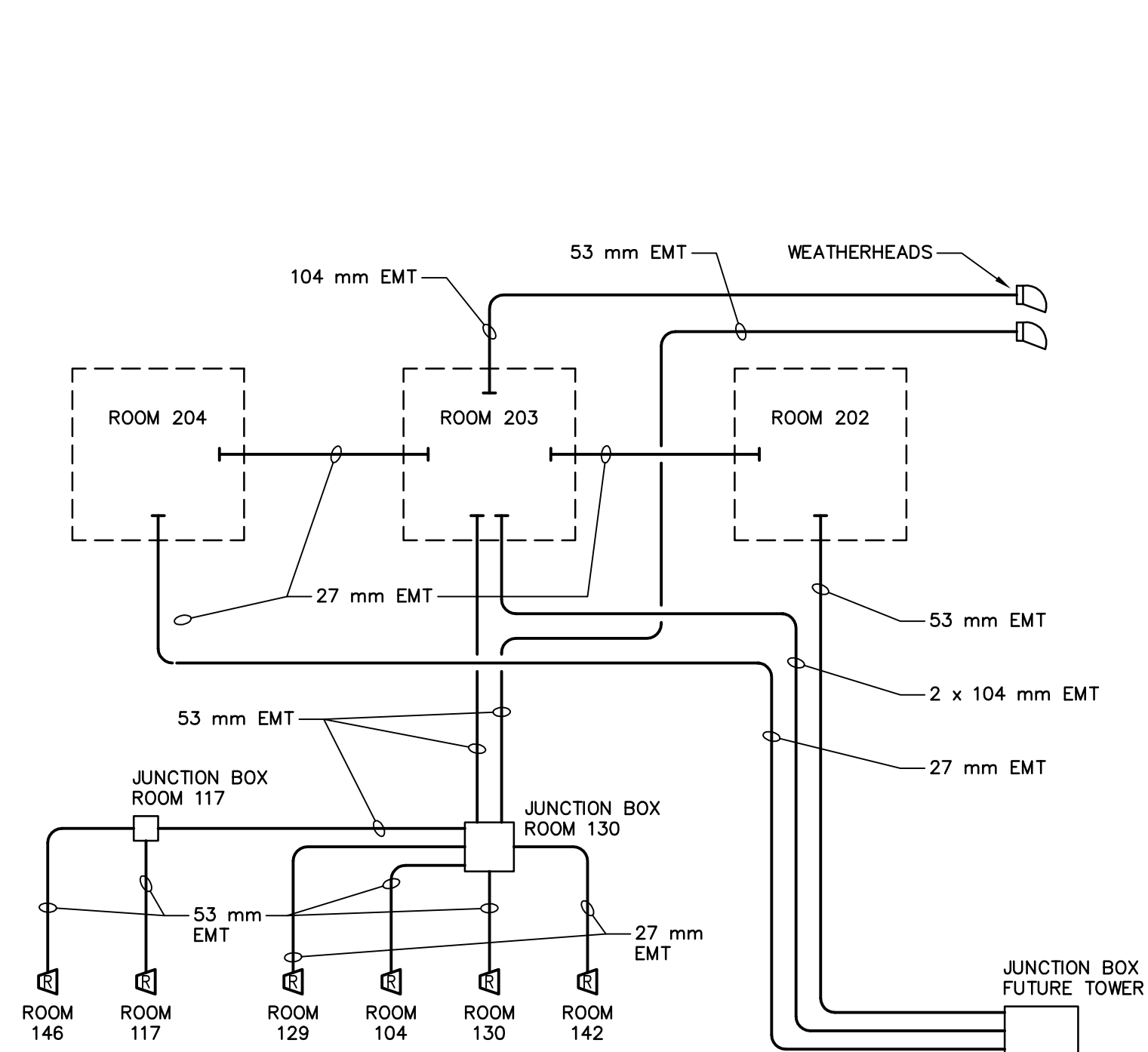


FIRE ALARM NOTES:

- A. MOUNT SMOKE AND HEAT DETECTORS AT LEAST 450mm FROM AIR OUTLETS, WALLS, AND OTHER OBSTRUCTIONS NOT EXCEEDING 100mm FROM THE CEILING. REFER TO DETAILS ON THIS SHEET. CO-ORDINATE WITH MECHANICAL CONTRACTOR FOR LOCATION OF AIR OUTLETS PRIOR TO ROUGH-IN WIRING.
- B. OBTAIN A COPY OF THE ULC STANDARD FOR THE INSTALLATION OF FIRE ALARM SYSTEMS, CAN/ULC-5524-06. ALL FIRE ALARM INSTALLATION TO COMPLY WITH THE STANDARD.
- C. PROVIDE SEPARATE ANNUNCIATION FOR EACH FIRE ALARM INITIATING DEVICE.
- D. PROVIDE 21mm CONDUIT FOR WIRING BETWEEN FIRE ALARM PANEL AND REMOTE ANNUNCIATORS.
- E. FIRE ALARM ANNUNCIATORS SHALL BE FLUSH MOUNTED IN WALL.

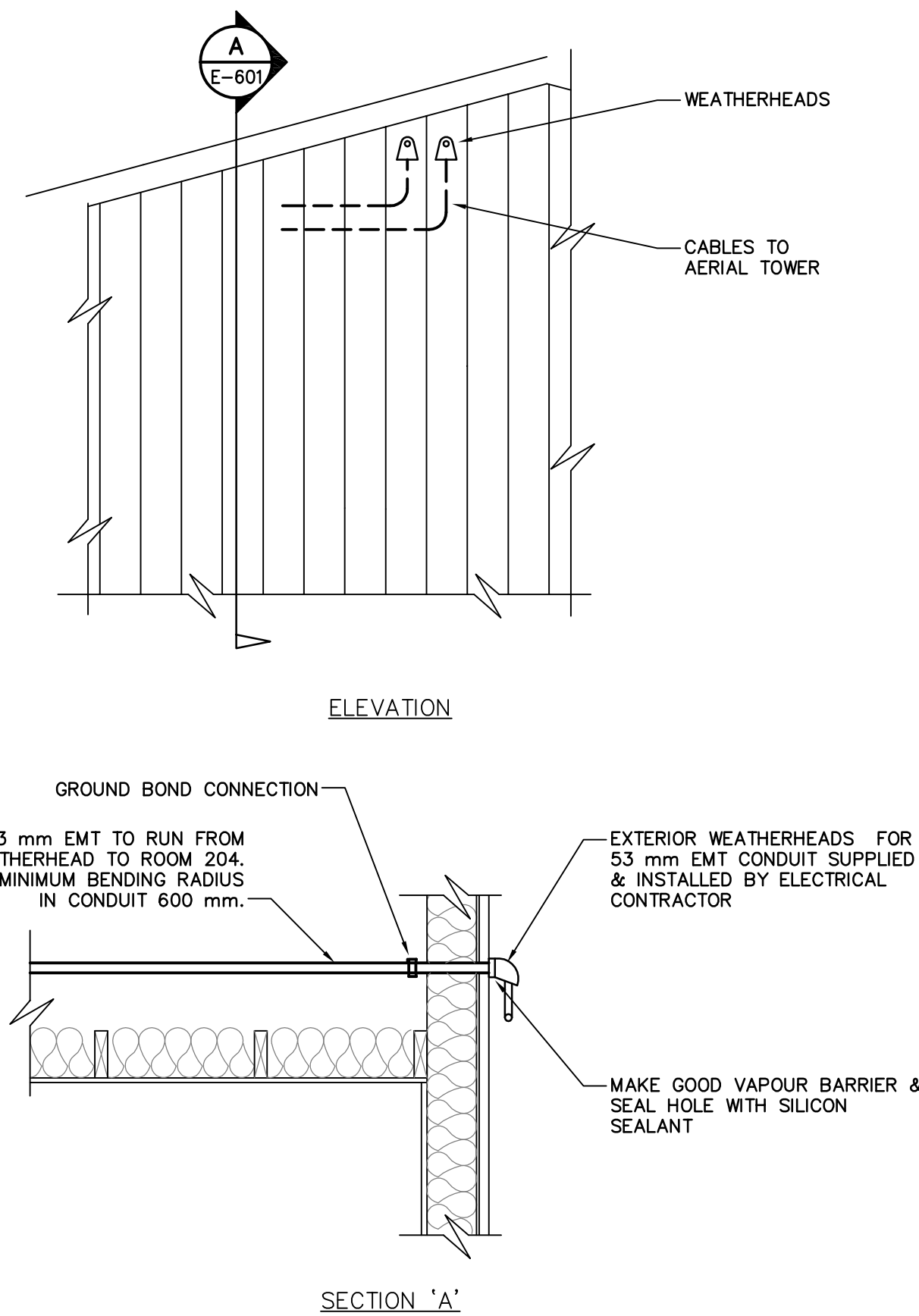
FIRE ALARM RISER DIGRAM

SCALE: NONE



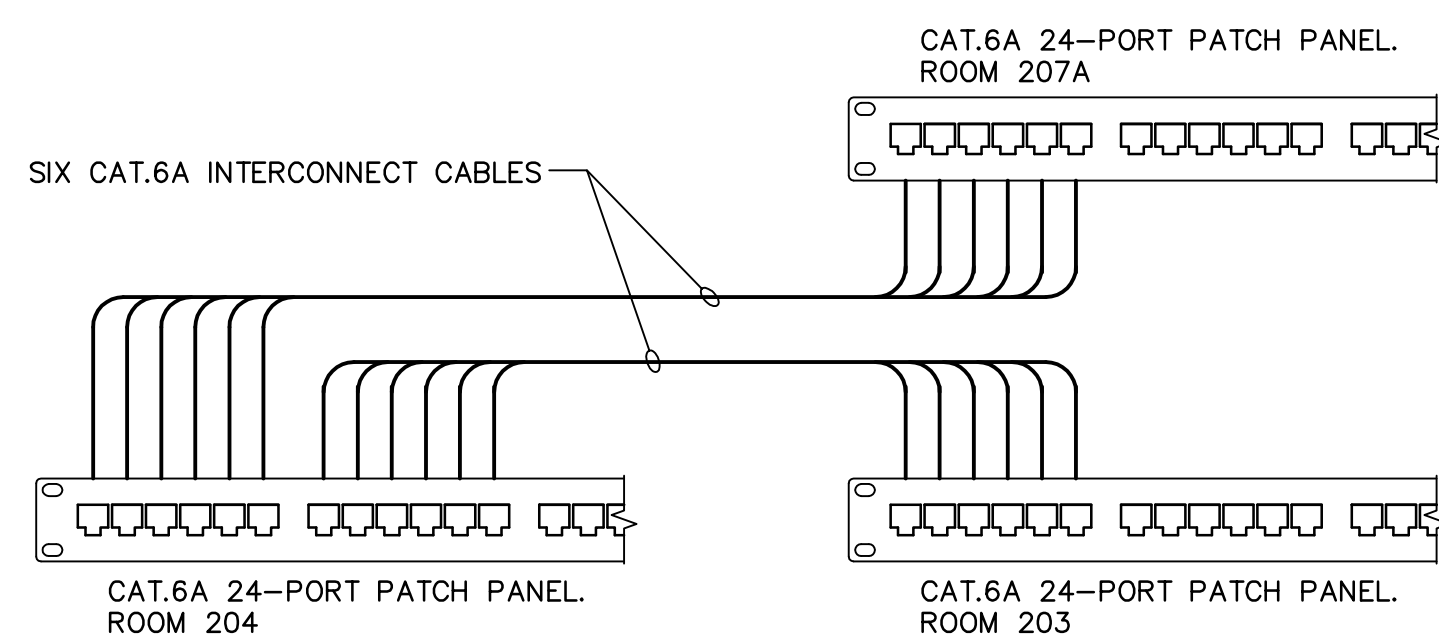
RADIOR SYSTEM BLOCK DIAGRAM

SCALE: NONE



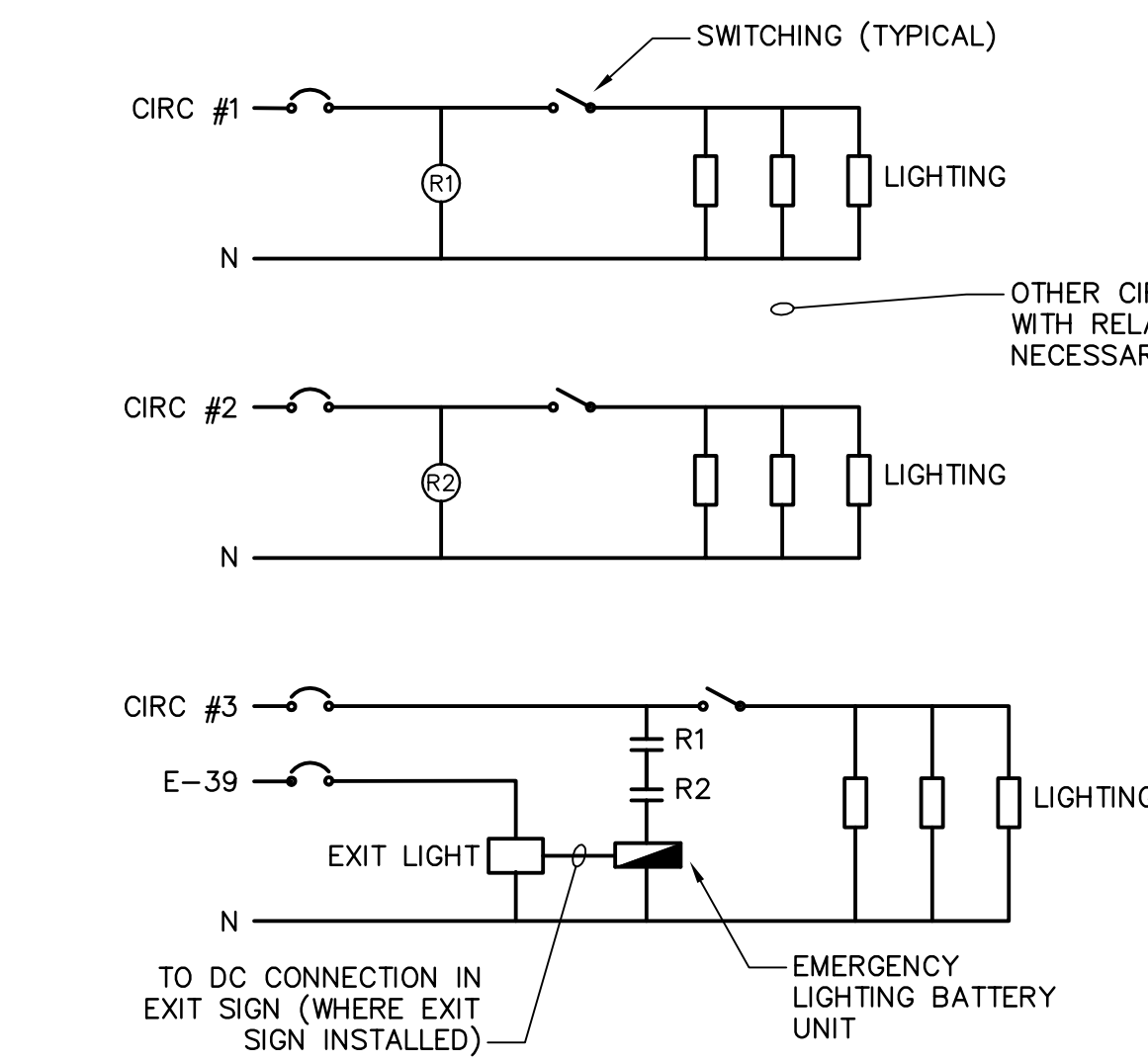
RADIO WHIP ANTENNA MOUNTING DETAILS

SCALE: NONE



TIE CABLE INTERCONNECTION DETAIL

SCALE: NONE



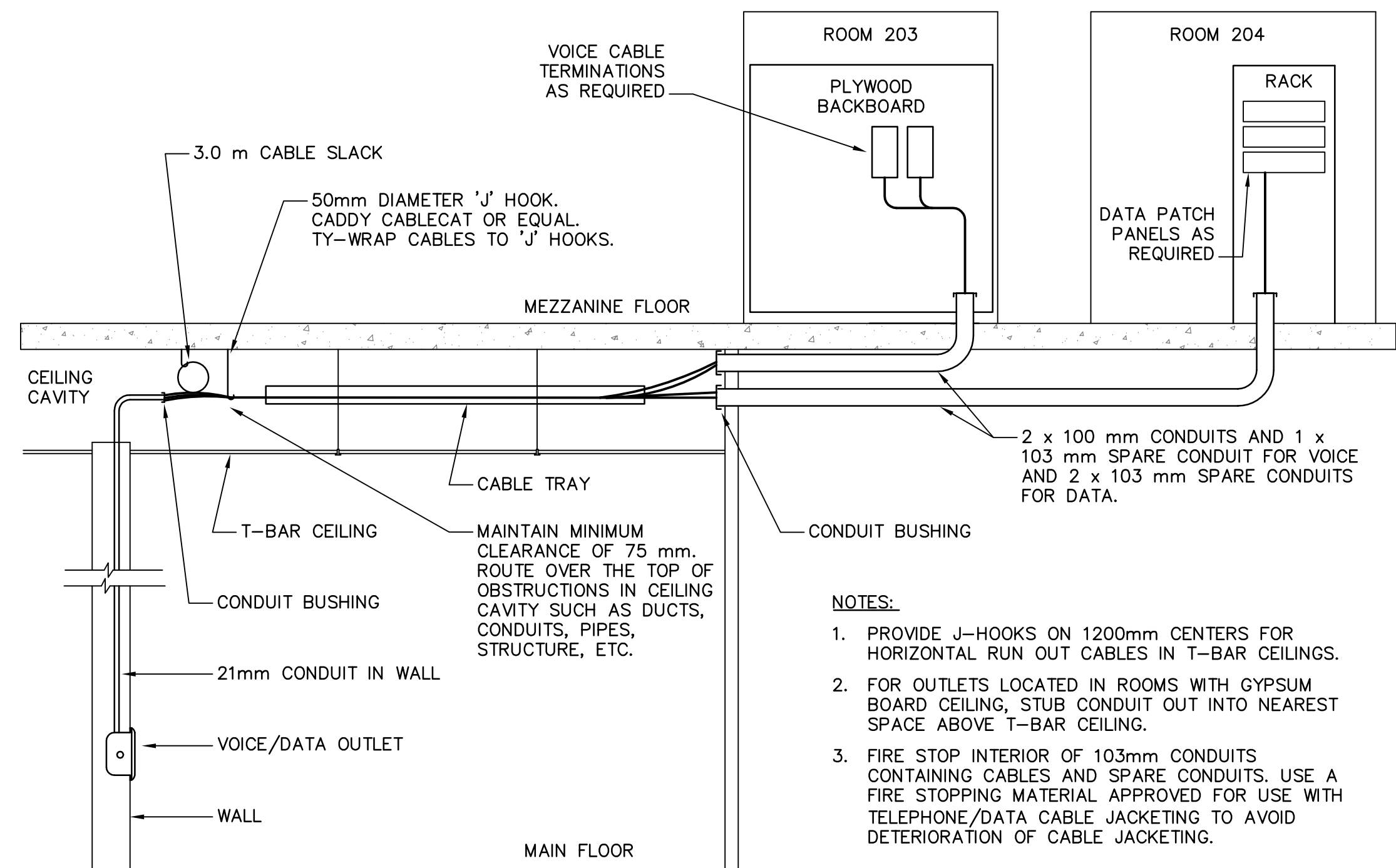
EMERGENCY & EXIT LIGHTING WIRING SCHEMATIC

SCALE: NONE

EMERGENCY BATTERY RELAY SCHEDULE		
BATTERY UNIT #	BATTERY CONNECTED TO CIRCUIT	EMERGENCY HEADS ACTIVATED BY CIRCUITS
1	E-22	E-22 (NO RELAY)
2	B-8	B-8 (NO RELAY)
3	B-10	B-10 (NO RELAY)
4	C-10	C-2,10,12,14
5	C-18	C-16,18 E-1,24
6	E-1	A-1 E-1
7	M-1	M-1 (NO RELAY)

NOTES:

1. LOCATE RELAYS R1 ETC. IN MINIMUM 300 x 300 x 100 mm DEEP VENTILATED ENCLOSURE ABOVE/BESIDE BATTERY UNIT. (ABOVE T-BAR CEILING WHERE POSSIBLE).
2. RELAYS TO BE PLUG-IN STYLE WITH DUST COVERS, RATED MINIMUM 15A.
3. REFER TO EMERGENCY BATTERY RELAY SCHEDULE FOR RELAY REQUIREMENTS.

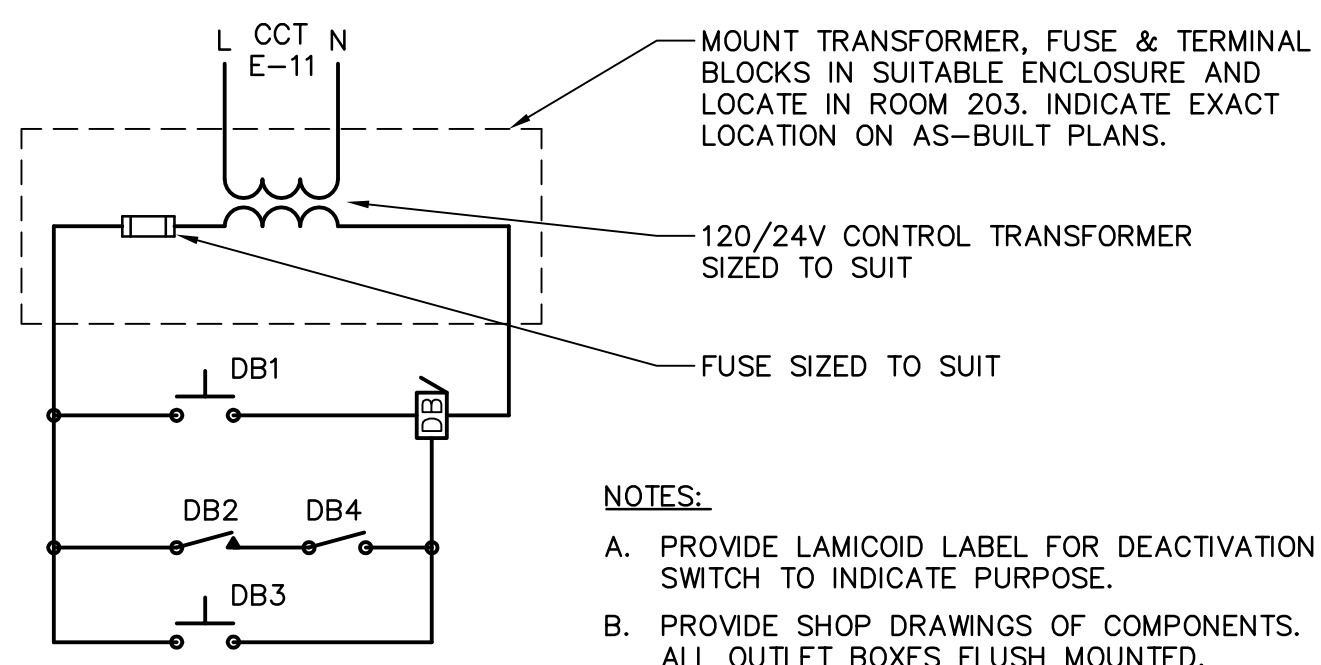


VOICE AND DATA CABLING DISTRIBUTION DETAIL

SCALE: NONE

NOTES:

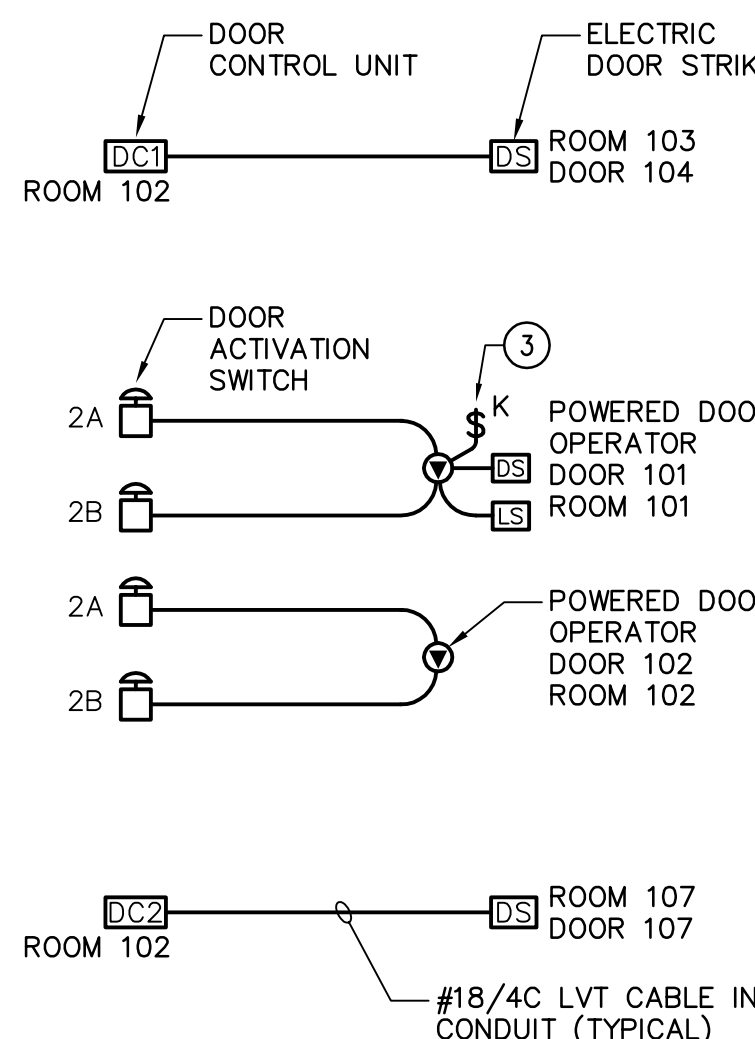
1. PROVIDE J-HOOKS ON 1200mm CENTERS FOR HORIZONTAL RUN OUT CABLES IN T-BAR CEILINGS.
2. FOR OUTLETS LOCATED IN ROOMS WITH GYPSUM BOARD CEILING, STUB CONDUIT OUT INTO NEAREST SPACE ABOVE T-BAR CEILING.
3. FIRE STOP INTERIOR OF 103mm CONDUITS CONTAINING CABLES AND SPARE CONDUITS. USE A FIRE STOPPING MATERIAL APPROVED FOR USE WITH TELEPHONE/DATA CABLE JACKETING TO AVOID DETERIORATION OF CABLE JACKETING.



DOOR SIGNAL SYSTEM CONTROL SCHEMATIC

SCALE: NONE

ITEM	DESCRIPTION
DB1	PUSHBUTTON DOOR 101
DB2	DOOR SWITCH DOOR 101; EDWARDS #46 OR APPROVED EQUAL
DB3	PUSHBUTTON ROOM 102
DB4	DEACTIVATION SWITCH ROOM 105
DB5	DOOR CHIME, TWO TONE ROOM 117

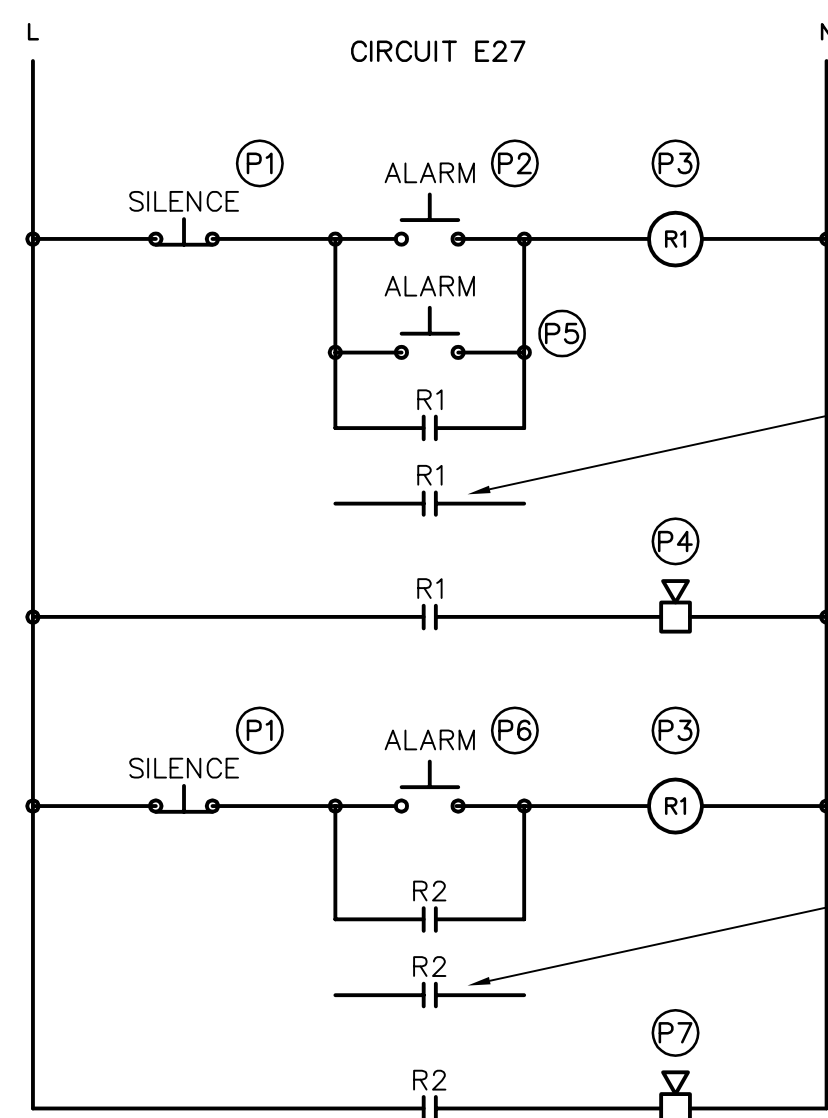


DOOR CONTROL WIRING DIAGRAM

SCALE: NONE

NOTES:

1. ELECTRIC DOOR STRIKES AND CONTROL UNITS, POWERED DOOR OPERATORS AND ACTIVATION SWITCHES, POWER SUPPLY TRANSFORMERS AND DOOR CONTROL KEYPAD SHALL BE SUPPLIED AND INSTALLED BY OTHER DIVISIONS.
2. ELECTRICAL CONTRACTOR TO PROVIDE AND INSTALL OUTLET BOXES FOR PUSHBUTTONS, ACTIVATION SWITCHES AND KEYPAD.
3. ELECTRICAL CONTRACTOR TO PROVIDE KEYED SWITCH TO DISCONNECT POWERED DOOR OPERATOR AT DOOR 101. ARROW HART #1181NOF WITH #1187 PLATE AND SIX #AH14 KEYS. KEYS TO BE TURNED OVER TO OWNER. OBTAIN RECEIPT.
4. ELECTRICAL CONTRACTOR IS TO PROVIDE LOW VOLTAGE WIRING FROM CONTROL PANEL TO CONTROL DEVICES, DOOR OPERATORS AND DOOR STRIKES. ALL WIRING TO BE IN CONDUIT.
5. ELECTRICAL CONTRACTOR IS TO PROVIDE POWER FROM PANEL 'E' TO DOOR OPERATORS AND CONTROL UNITS.
6. COORDINATE WITH DOOR HARDWARE EQUIPMENT SUPPLIER FOR SIZE OF OUTLET BOXES REQUIRED FOR CONTROL DEVICES AND EXACT LOCATION OF THE CONTROL UNIT, ETC.



PANIC ALARM SYSTEM CONTROL SCHEMATIC

SCALE: NONE

ITEM	DESCRIPTION	SYMBOL
P1	ALARM SILENCE PUSHBUTTON, GREEN BUTTON WITH SHROUD ROOM 117	PAN
P2	ALARM PUSHBUTTON IN ROOM 146. RED MUSHROOM HEAD.	P1
P3	MULTI-POLE ENCLOSED, PLUG-IN RELAY AND ALARM SILENCE PUSHBUTTON IN SUITABLE FLUSH ENCLOSURE WITH BRUSHED STAINLESS STEEL COVERPLATE IN ROOM 117.	PAN
P4	FLUSH MOUNTED ALARM HORN IN ROOM 117.	PAN
P5	ALARM PUSHBUTTON IN SECURE BAY, RED MUSHROOM HEAD.	P2
P6	ALARM PUSHBUTTON AT RECEPTION	P3
P7	FLUSH MOUNTED ALARM HORN IN ROOM 117. THIS HORN MUST SOUND DISTINCTLY DIFFERENT FROM ITEM 4.	PAN

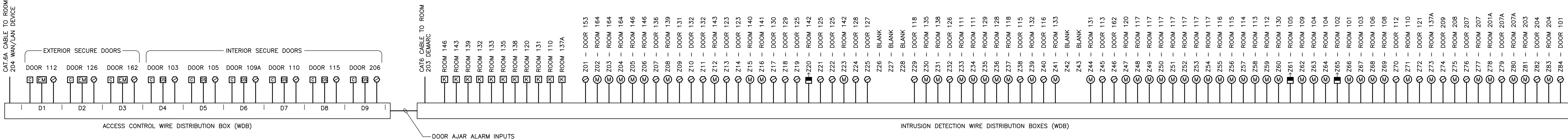
NOTES:

- A. PUSHBUTTONS HEAVY DUTY, OIL TIGHT, WITH STAINLESS STEEL COVER PLATE.
- B. R1, R2 MULTI-POLE, PLUG-IN, 10A, 120V INDUCTIVE LOAD RELAY. DUST TIGHT ENCLOSURE.
- C. SUBMIT SHOP DRAWINGS OF COMPONENTS.
- D. DEVICES IN ROOM 117 MOUNTED IN FLUSH BACKBOX WITH BRUSHED STAINLESS STEEL COVERPLATES, MOUNTED AT 1676mm TO TOP.

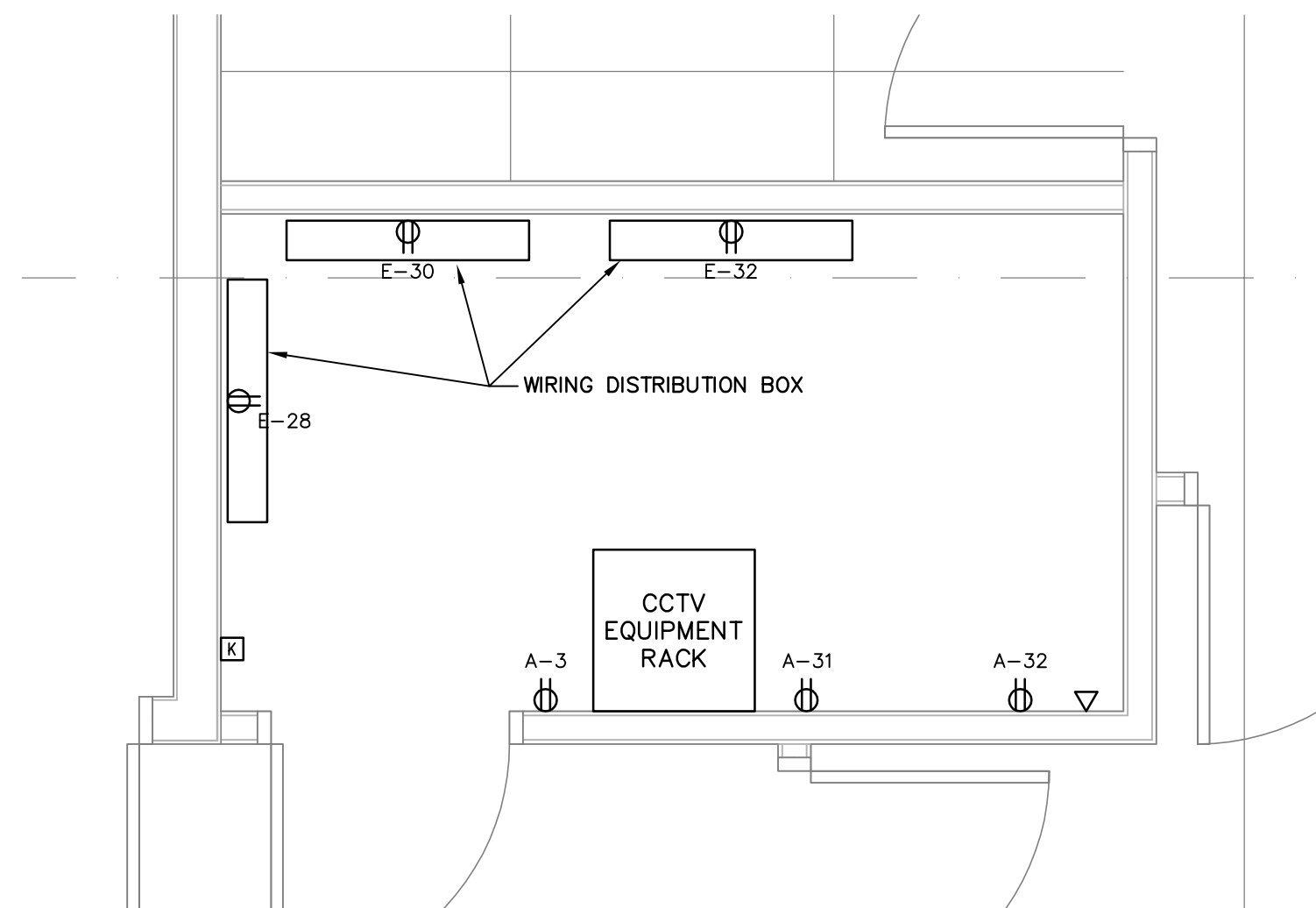
6		
5		
4	100% COMPLETE	2012/03/05
3	FOR COORDINATION	2012/02/17
2	99% SUBMISSION NOT FOR CONSTRUCTION	2011/03/31
1	60% SUBMISSION	2011/01/27
Revision Number	Description/Description	Date/Date
Client/Client		

100 MILE HOUSE POLICE BUILDING

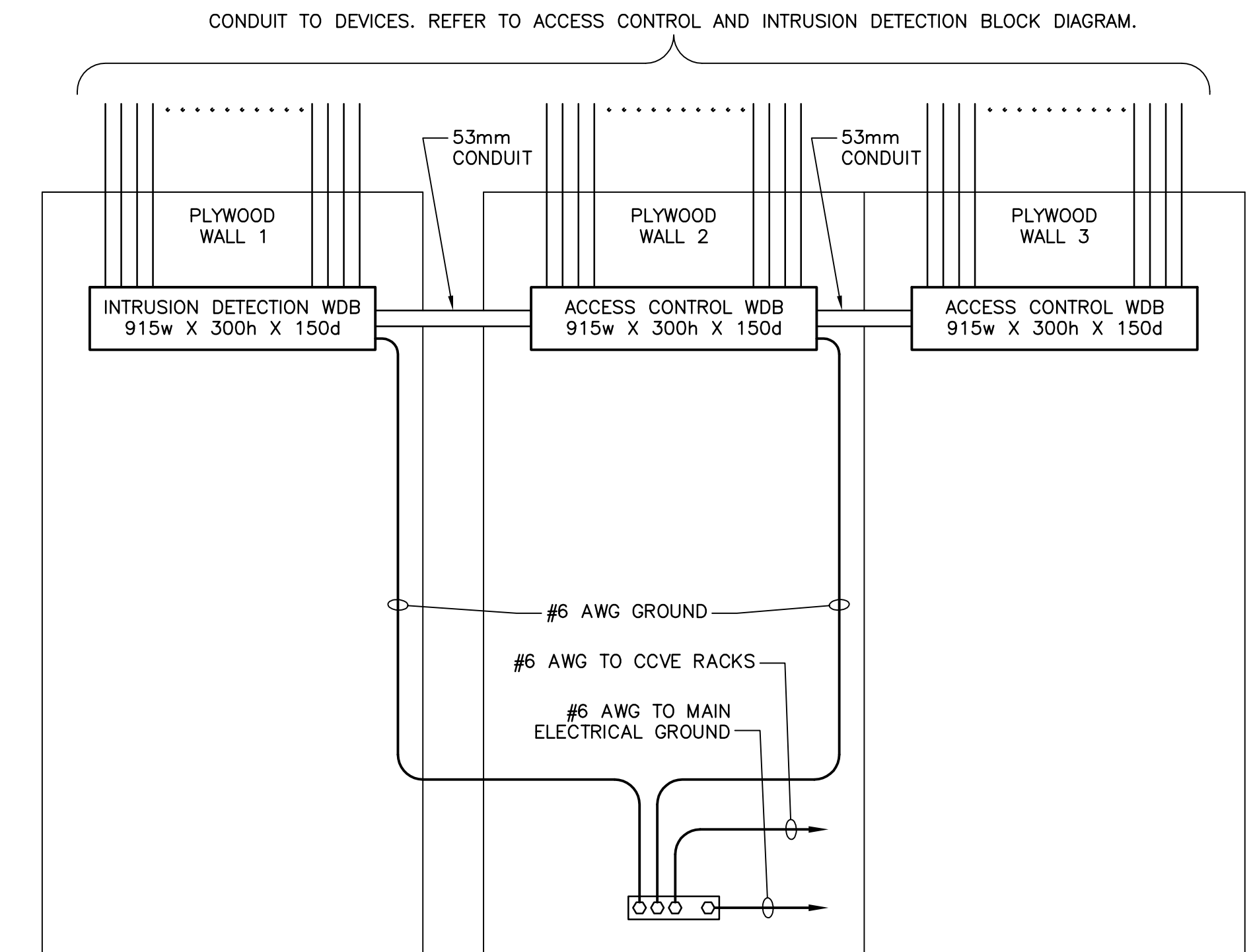
LIFE SAFETY, DOOR, TELECOMMUNICATION AND RADIO SYSTEM DETAILS



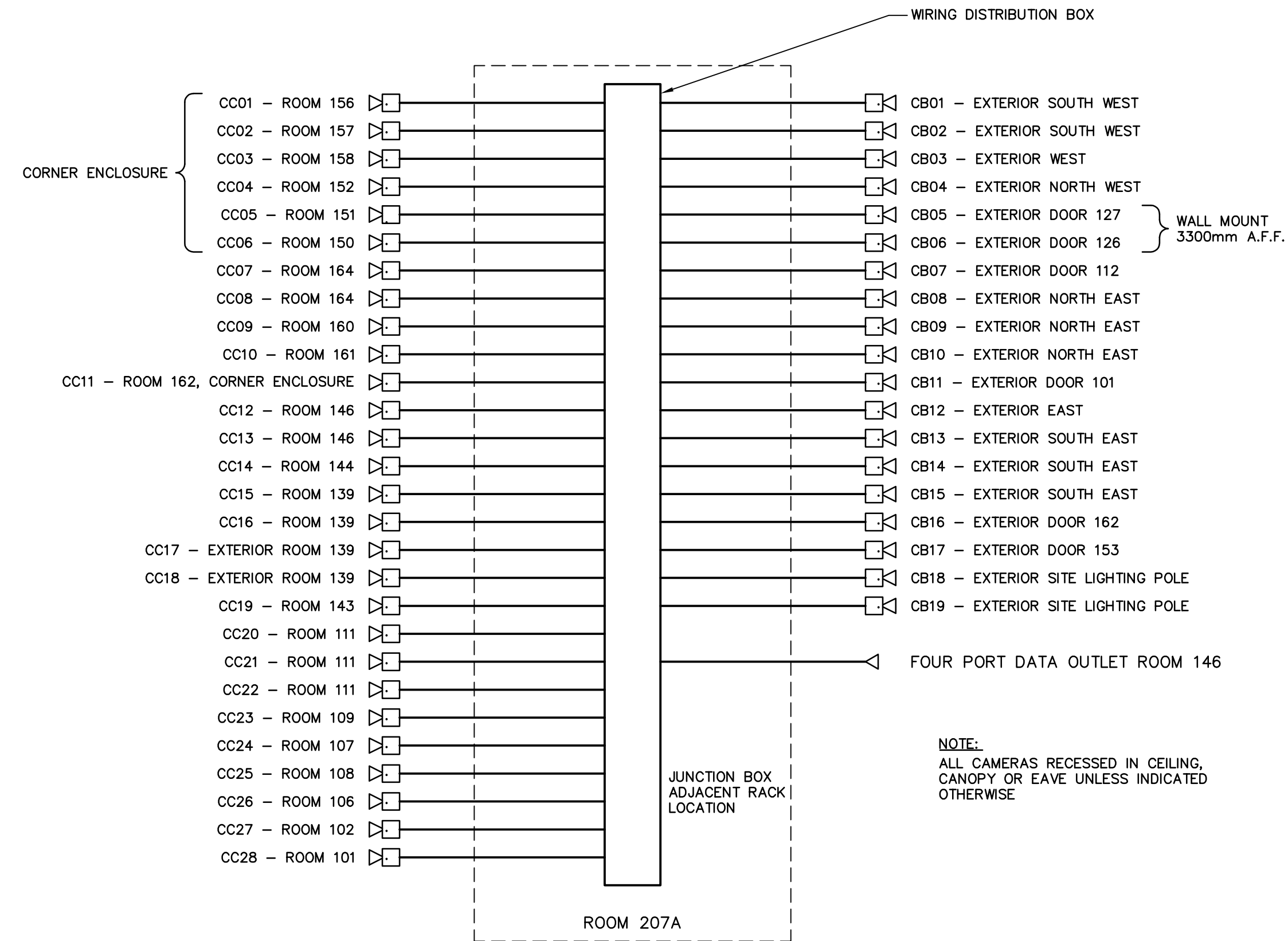
ACCESS CONTROL AND INTRUSION DETECTION BLOCK DIAGRAM
SCALE: NONE



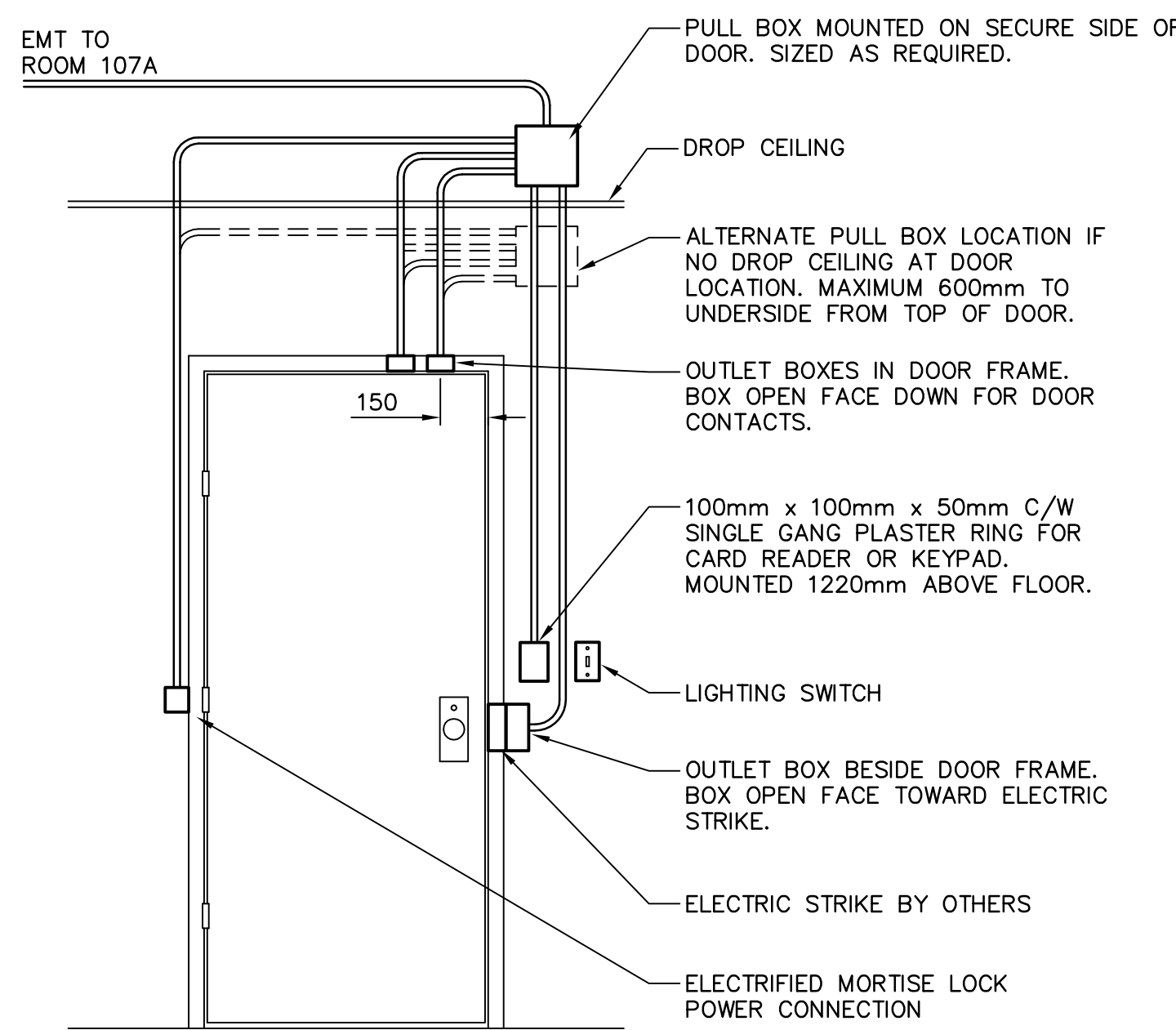
ROOM 207A LAYOUT PLAN
SCALE: 1:25



ROOM 207A EQUIPMENT LAYOUT ELEVATION
SCALE: NONE

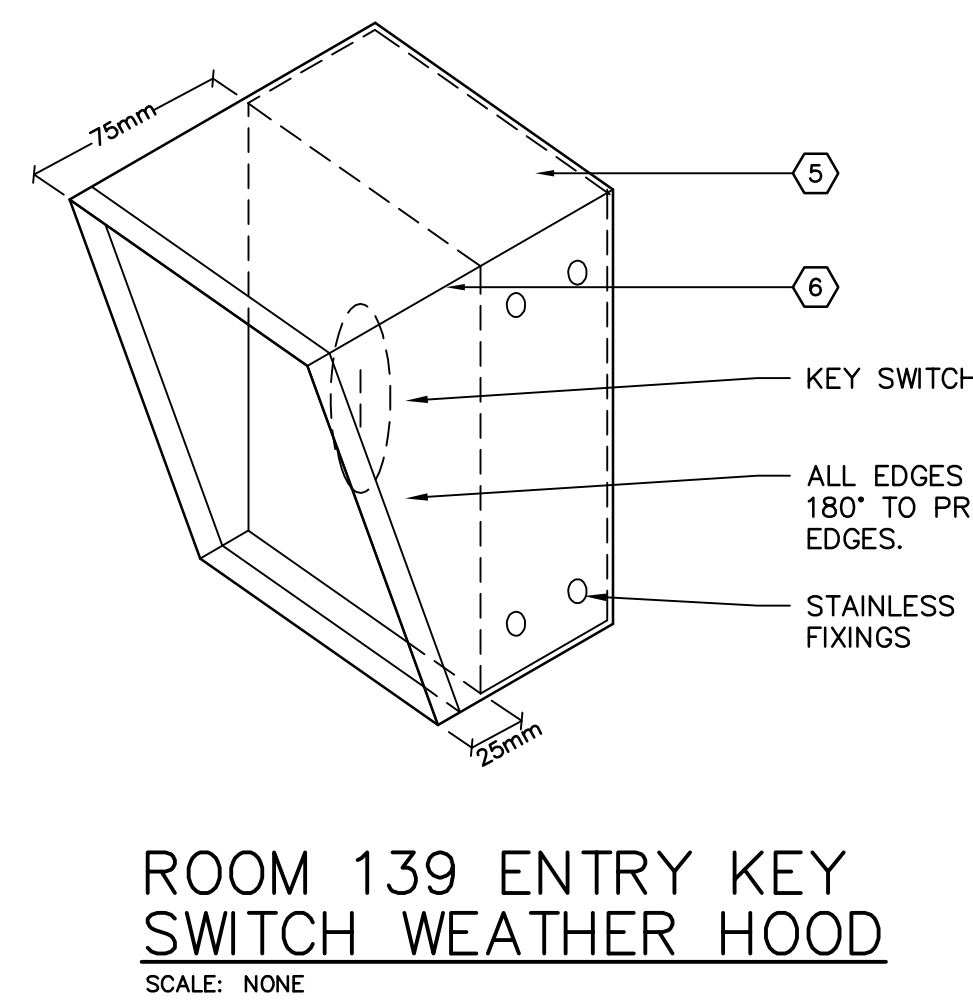


CCVE SYSTEM WIRING DIAGRAM
SCALE: NONE



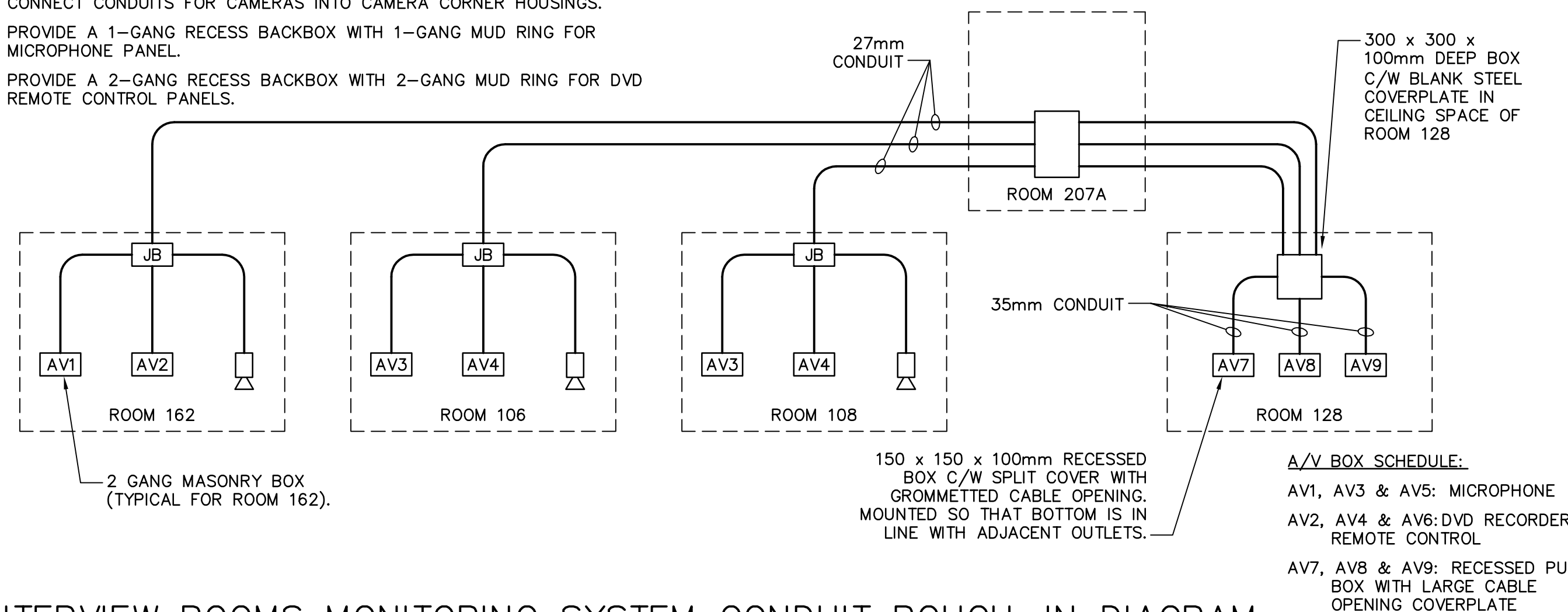
- NOTES:
- PROVIDE PULL BOXES FOR CONDUIT RUNS TO WIRING DISTRIBUTION BOXES IN ROOM 207A AFTER EVERY TWO 90° BENDS. INDICATE PULL BOX LOCATIONS ON AS-BUILT DRAWINGS.
 - PROVIDE PULL STRING IN ALL CONDUIT RUNS.
 - ROUGH-IN FOR CARD READER AT EXTERIOR; FOR KEYPAD AT INTERIOR.
 - WHERE DOOR IS ON EXTERIOR, SECURE SIDE OF DOOR IS INSIDE THE BUILDING.
 - WHERE DOOR IS INSIDE THE BUILDING INTO A SECURE ROOM, THE SECURE SIDE OF THE DOOR IS THE ROOM SIDE.
 - CARD READERS TO BE MOUNTED IN FLUSH MOUNTED RIGID PVC BOX.
 - CONDUIT SIZED TO ALLOW 40% FILL.
 - THIS DETAIL INDICATES TYPICAL DEVICE POSITIONING. REFER TO PLANS FOR INDIVIDUAL DOOR DEVICE REQUIREMENTS.
 - COORDINATE INSTALLATION WITH DIVISION 08.

TYPICAL SECURE DOOR CONNECTION DETAILS
SCALE: NONE



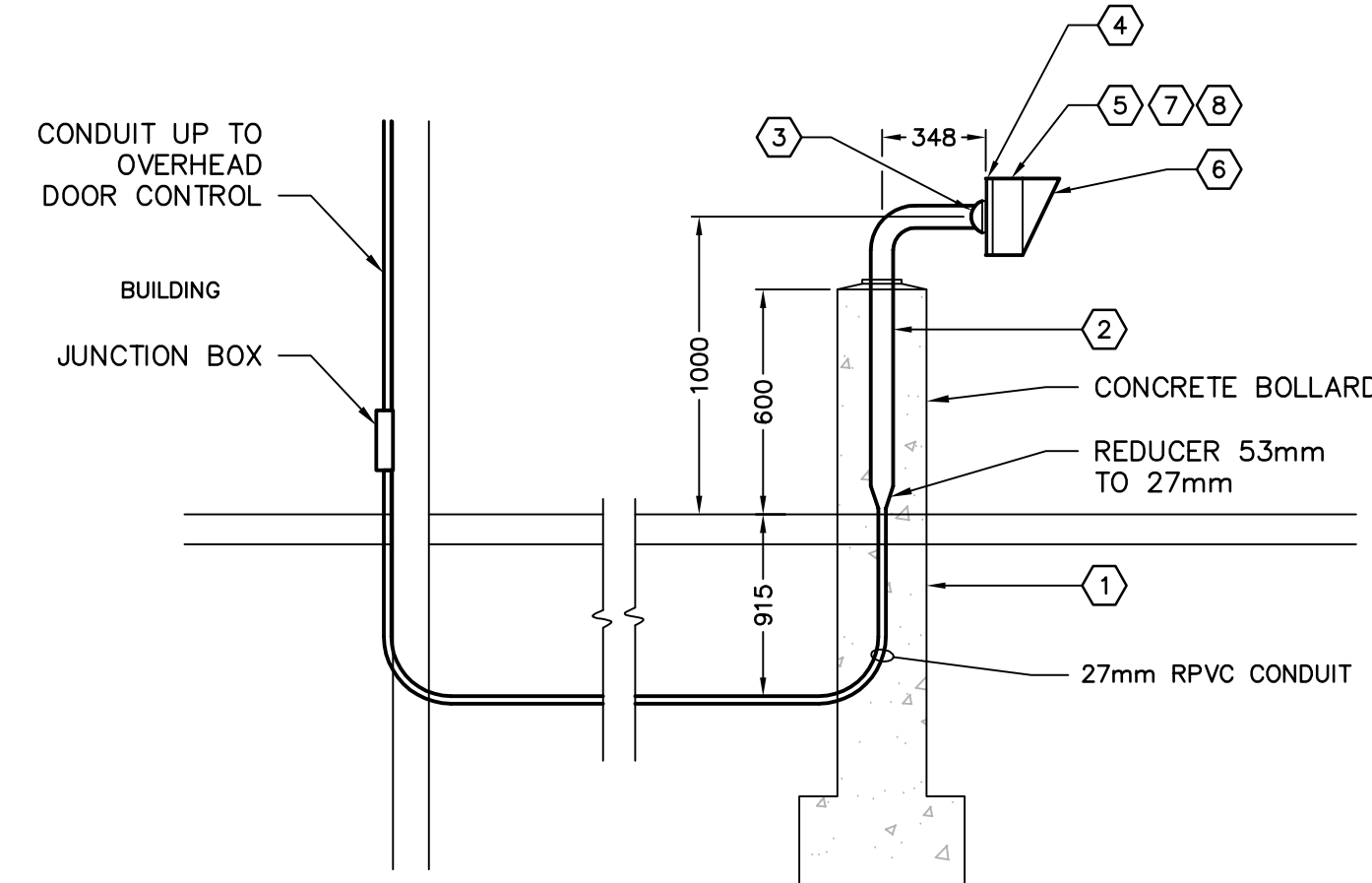
ROOM 139 ENTRY KEY SWITCH WEATHER HOOD
SCALE: NONE

- NOTES:
- CONNECT CONDUITS FOR CAMERAS INTO CAMERA CORNER HOUSINGS.
 - PROVIDE A 1-GANG RECESS BACKBOX WITH 1-GANG MUD RING FOR MICROPHONE PANEL.
 - PROVIDE A 2-GANG RECESS BACKBOX WITH 2-GANG MUD RING FOR DVD REMOTE CONTROL PANELS.



INTERVIEW ROOMS MONITORING SYSTEM CONDUIT ROUGH-IN DIAGRAM
SCALE: NONE

ITEM	DESCRIPTION	COMMENT
①	CONCRETE BOLLARD	INSTALLED BY GENERAL CONTRACTOR
②	53mm RIGID GALVANIZED SCREWED STEEL CONDUIT IN BOLLARD	PROVIDED BY ELECTRICAL CONTRACTOR
③	THREADED WEATHERPROOF CONNECTOR LONG ENOUGH TO BOND OUTLET BOX AND STEEL MOUNTING PLATE TOGETHER	PROVIDED BY ELECTRICAL CONTRACTOR
④	6.4mm THICK HOT DIPPED GALVANIZED STEEL BACKING PLATE FOR MOUNTING	PROVIDED BY ELECTRICAL CONTRACTOR
⑤	CAST OUTLET BOX 100mm X 100mm X 100mm APPLETON 'VF' SERIES UNFLANGED CAST JUNCTION BOX. BOLTED TO MOUNTING PLATE WITH 4 X 6.4mm STAINLESS STEEL SCREWS. DRILL AND TAP MOUNTING PLATE.	PROVIDED BY ELECTRICAL CONTRACTOR
⑥	WEATHER HOOD FABRICATED FROM 16 GAUGE BRUSHED STAINLESS STEEL. FIXED TO OUTLET BOX WITH 6.4mm PAN HEAD STAINLESS STEEL SCREWS.	PROVIDED BY ELECTRICAL CONTRACTOR
⑦	PROVIDE PULL STRING AND #10AWG GREEN GROUND IN CONDUIT FROM DOOR CONTROL MOTOR IN ROOM 139. BOND GROUND WIRE AT BOTH ENDS.	PROVIDED BY ELECTRICAL CONTRACTOR
⑧	PROVIDE BLANK STAINLESS STEEL COVERPLATE FOR OUTLET BOX. HAVE COVER PLATE ROUTED WITH OPENING TO SUIT KEY SWITCH THAT WILL BE MOUNTED IN THE BOX.	PROVIDED BY ELECTRICAL CONTRACTOR



ROOM 139 OVERHEAD DOOR EXTERIOR CONTROL SECTION
SCALE: NONE

Consultant

MCW #3910

MCW

MCW Consultants Ltd.

1185 West Georgia St. Suite 1400, Vancouver, BC, V6E 4E5
E-Mail: mcw_van@mcw.com www.mcw.com
Tel: 604-687-1821 Fax: 604-683-5681
Vancouver Toronto Winnipeg Moncton Ottawa Halifax
Dauphin Kelowna Trail Saint John

Architect

number 10

number TEN

architectural group

112 - 826 north park dr.
victoria bc canada v8w 3b6
250.360.2306 / 250.360.2368
number10@telus.net

6		
5		
4	100% COMPLETE	2012/03/05
3	FOR COORDINATION	2012/02/17
2	99% SUBMISSION NOT FOR CONSTRUCTION	2011/03/31
1	60% SUBMISSION	2011/01/27
Revision Number:	Description/Description	Date/Date
Client/Client		

Project title/Titre du projet

100 MILE HOUSE POLICE BUILDING

Consultant Signature Only

Designed by/Concepté par
DC / PG
Drawn by/Dessiné par
PG
Project Manager/Administrateur de Projets

Drawing title/Titre du dessin

CCVE, ACCESS CONTROL & INTRUSION ALARM SYSTEMS DETAILS

Project No./No. du projet

-

Sheet/Feuille

E-602

Revision no./
La Révision no.

0