

Correctional Service Canada
EM-P11 Request for Proposals
Demonstration/Testing Scenarios

The creation and design of the demonstration and testing scenarios are based on the following principles:

1. Limit the amount of resources and time a Bidder must invest in the evaluation process by:
 - a. Limiting the duration and times that a Bidder must be present on site for either the demonstration and/or testing phase;
 - b. Allowing for and clearly identifying what must be done during versus prior to the actual demonstration or testing phase; and
 - c. Utilizing or building on entries or tasks completed during the demonstration for the testing phases.
2. Limit the need for CSC staff to be trained on a Bidder's equipment and/or software in order to complete the demonstration and testing.
3. Limit the number of actions/tasks CSC staff must complete directly with the Bidder's EM equipment and/or software used during the demonstration and testing phases.

The top 4 Bidders after the written evaluation will be given an opportunity to participate in the demonstration and testing phase. All of the demonstration and testing sessions will be held at the Correctional Service Canada Ontario Regional Staff College in Kingston, Ontario over a 4 day period with one additional day in Ottawa the following week. Each day will be devoted to the demonstration and testing of a single Bidder. The sessions will be from 9:00 – 16:00 with a lunch break at 12:00 – 13:00.

Correctional Service Canada
EM-P11 Request for Proposals
Demonstration/Testing Scenarios

Demonstration Scenario 1: Training/Testing Environment	Expected Time Required	Reference(s)	Comments
<p>The following actions constitute Demonstration Scenario 1 and must be demonstrated during the Demonstration Phase:</p> <ol style="list-style-type: none"> 1. Using the standard Correction Service Canada workstation which will be provided to you for this purpose, log on to the EM software solution – training environment – as Community Operations Manager Michael Kelly (Accounts are described within Demonstration Scenario 2). 2. Demonstrate the existence of both training and production environments. 3. Demonstrate how training can be conducted using the training environment. 4. Demonstrate how testing can be conducted using the training environment. 5. Demonstrate that the training / testing environment provides all functionality and capabilities defined for the Operations environment. (Note: It is not necessary to demonstrate each and every functional capability.) 6. Demonstrate how operations can be conducted on the production environment while training and testing are conducted using the training environment. 7. Demonstrate how EM devices can be moved from one environment to the other by CSC staff. <p>For the purposes of the Demonstration and testing your training environment solution should be used.</p>	<p style="text-align: center;">09:00 To 09:10</p>	<p><u>Annex A:</u> 2.3.1 General Application Functionality</p> <ol style="list-style-type: none"> 1. The Contractor shall provide an EM software application that will enable CSC staff to manage its offenders participating in the EM-P11. 2. The Contractor shall provide a software application environment that CSC can use for training and / or testing purposes, as follows: <ol style="list-style-type: none"> 2.1. the training / testing environment shall provide all functionality and capabilities defined for the Operations environment; 2.2. it shall be possible for CSC to move devices between the training and production environments without intervention by the Contractor. <p>2.3.7.1 The EM software application shall provide access to the full application and all its user and administrative functions through the CSC standard web browser interface, MS Internet Explorer revision 7.0 and its evolving revisions.</p>	

Correctional Service Canada
EM-PII Request for Proposals
Demonstration/Testing Scenarios

Demonstration Scenario 2: Account Creation/Role Based Access	Expected Time Required	Reference(s)	Comments
---	------------------------	--------------	----------

The following actions constitute Demonstration Scenario 2 and must be demonstrated during the Demonstration Phase:

1. Prior to the Demonstration, create accounts within the EM software solution for Peter Kane, Robert Smith and Glenn Brown using the information provided in the table below. Where additional information other than what is provided below is required in order to create the accounts, the Bidder is instructed to insert information it deems appropriate.
2. Prior to the Demonstration, complete the following activities using the accounts that have been created for Peter Kane, Robert Smith and Glenn Brown. These actions are needed in order to ensure that these activities have been recorded in the audit log which will be the subject of scenario 13 (Access Auditing) :
 - 2.1. Successful log-on attempts;
 - 2.2. Unsuccessful log-on attempts;
 - 2.3. Account locking events;
 - 2.4. Account un-locking events; and
 - 2.5. User log-off
3. Prior to the Demonstration, complete the following activities using the accounts that have been created for Peter Kane, Robert Smith and Glenn Brown. These actions are needed for other Scenarios.
 - 3.1. Create zones and schedules for an offender.
 - 3.2. Create a “view” only account for another employee.
 - 3.3. Review movement for an offender.
 - 3.4. Reset a password of a “view only” user.
4. During the Demonstration demonstrate the existence of an account for Peter Kane, Parole Officer. Demonstrate that the account is associated with the Kingston Parole Office. Demonstrate that the account privileges are restricted to “View Only”.
5. During the Demonstration demonstrate the existence of an account for Robert Smith, Parole Officer Supervisor. Demonstrate that the account is associated with the Kingston Parole Office. Demonstrate that the account privileges are restricted to “View Only”.
6. During the Demonstration demonstrate the existence of an account for Glenn Brown, Monitoring Officer. Demonstrate that the account is associated with the National Monitoring Centre. Demonstrate that the account privileges include “creating”, “editing” and “updating” offender information.

Officer Name	Location	Title	Access Privileges		
				ate	ance n

09:10
To
09:25

Correctional Service Canada
 EM APH Request for Proposals
 Annex A
 2.3.5. Access/Control, Audit and Security Requirements
 Demonstration/Testing Scenarios

In order to assist CSC to meet its PGS and MITS obligations, the EM software application shall comply with the requirements defined in this Section 2.3.5.

1. The EM software application shall provide:
 - 1.1. an account management facility to create accounts;
 - 1.2. a privilege management facility to create and assign access privileges;
 - 1.3. an identification and authentication facility to ensure access is restricted to those who are authorized;
 - 1.6 access control functions that will restrict users based on their access privileges;
2. The EM software application shall incorporate security features and functions that restrict access to specific data elements within the database, based on the user profile.

Correctional Service Canada
EM-PII Request for Proposals
Demonstration/Testing Scenarios

Correctional Service Canada
EM-P II Request for Proposals
Demonstration/Testing Scenarios

Demonstration Scenario 3: Create an Offender Profile and Assign an EM device.	Expected Time Required	Reference(s)	Comments															
<p>The following actions constitute Demonstration Scenario 3 and must be demonstrated during the Demonstration Phase:</p> <ol style="list-style-type: none"> Prior to the Demonstration, create the necessary profiles for offenders “A”, “B”, and “D” below using the account created for Monitoring Officer Glenn Brown. Where additional information other than what is provided in the table below is required in order to create the profiles, the Bidder is instructed to insert information it deems appropriate. Use the EM Reference Number as the unique identifier for an offender. Do not enter an offender name. <table border="1" data-bbox="182 704 997 930"> <thead> <tr> <th>Offender</th> <th>EM Reference Number</th> <th>Supervising Office</th> </tr> </thead> <tbody> <tr> <td>A</td> <td>10000000001A</td> <td>Kingston Parole Office</td> </tr> <tr> <td>B</td> <td>10000000002B</td> <td>Kingston Parole Office</td> </tr> <tr> <td>C</td> <td>10000000003C</td> <td>Kingston Parole Office</td> </tr> <tr> <td>D</td> <td>10000000004D</td> <td>Ottawa Parole Office</td> </tr> </tbody> </table> <ol style="list-style-type: none"> At least 72 hours prior to the Demonstration, assign a fully functional and charged EM device to Offender B. This will be used in Demonstration Scenario 11. At least 1 hour prior to the Demonstration, assign a fully functional and charged EM device to Offender A. <p>(Note that during the Demonstration EM devices will be assigned to other offenders (e.g. in Demonstration Scenario 4).)</p> <ol style="list-style-type: none"> During the Demonstration, create the necessary profile for offender “C”, using the account created for Senior Project Officer – Bob Smart (CSC National Headquarters). Where additional information other than what is provided in the table above is required in order to create the profiles, the Bidder is instructed to insert information it deems appropriate. Do not enter an offender name. During the Demonstration, search for each offender using the EM reference numbers listed in the table above. 	Offender	EM Reference Number	Supervising Office	A	10000000001A	Kingston Parole Office	B	10000000002B	Kingston Parole Office	C	10000000003C	Kingston Parole Office	D	10000000004D	Ottawa Parole Office	<p>09:25 To 09:45</p>	<p><u>Annex A:</u> 2.3.1 General Application Functionality 2.3.1.3 The EM software application shall allow CSC to enter a unique alphanumeric identifier of a minimum of twelve (12) characters for each offender participating in the EM-P II. This shall allow CSC to enter both alphabetic and numeric characters (e.g. in the application's "name" field) and be able to search using this identifier.</p>	
Offender	EM Reference Number	Supervising Office																
A	10000000001A	Kingston Parole Office																
B	10000000002B	Kingston Parole Office																
C	10000000003C	Kingston Parole Office																
D	10000000004D	Ottawa Parole Office																

Correctional Service Canada
EM-PII Request for Proposals
Demonstration/Testing Scenarios

Demonstration Scenario 4: EM Device Installation and Removal	Expected Time Required	Reference(s)	Comments
<p>The following actions constitute Demonstration Scenario 4:</p> <ol style="list-style-type: none"> 1. During the Demonstration, install an EM device onto the cylindrical structure with a circumference of approximately 176 mm. This structure is pictured in Annex A. 2. During the Demonstration, install an EM device onto the cylindrical structure with a circumference of approximately 300 mm. This structure is pictured in Annex A. 3. During the Demonstration, install the EM device assigned to offender A onto the left leg of the designated CSC employee. 4. During the Demonstration, install the EM device assigned to offender B onto the right leg of the same designated CSC employee. 5. During the Demonstration, demonstrate the process that a CSC Parole Officer will use to remove an EM device from an offender by removing the EM device assigned to offender B from the right leg of the designated CSC employee. 6. During the Demonstration, re-install the EM device assigned to offender B onto the right leg of the same designated CSC employee. 7. During the Demonstration, demonstrate that an EM device can be removed easily in the field by non-EM trained medical or police personnel by cutting the strap holding the EM device assigned to offender B with disposable medical scissors, provided by CSC. See Annex J for a picture of the disposable medical scissors that will be used during the Demonstration. 8. During the Demonstration, demonstrate that an alert has been received indicating that the strap has been cut. 9. During the Demonstration, demonstrate how to replace the strap on the EM device so that its functionality is restored and so that alerts are no longer generated. Do not re-install the EM device onto the leg of the CSC employee. 	<p style="text-align: center;">09:45 To 10:05</p>	<p><u>Spec:</u> 2.1.4 The strap of the EM device must accommodate both male and female wearers in terms of ankle circumference, i.e. from a circumference of 176 mm as a minimum to a circumference of at least 300 mm.</p> <p>2.10.1 The EM device strap must be capable of being cut off, for emergency removal, with disposable medical scissors as defined by 21 CFR 880.6820 (FDA).</p>	

Correctional Service Canada
EM-PII Request for Proposals
Demonstration/Testing Scenarios

Demonstration Scenario 5: Tampering with an EM Device	Expected Time Required	Reference	Comments
<p>The following actions constitute Demonstration Scenario 5:</p> <ol style="list-style-type: none"> 1. During the Demonstration, using the EM device assigned to offender B, demonstrate all tampering detection capabilities other than those associated with cutting the strap. The demonstration of tampering detection capabilities should include: <ol style="list-style-type: none"> 1.1. Tampering with the device strap; and 1.2. Tampering with or opening the device including its casing or any other parts. 2. During the Demonstration, demonstrate any and all alerts and/or other messages received by the EM software which are associated with the tampering detection capabilities. 	10:05 To 10:20	<p><u>Annex A:</u> 2.3.1.6 The EM software application shall provide notifications ("alerts"). 2.3.4.1 The EM software application shall detect and provide immediate notification for each of the following conditions concerning a device, whether the device is operating in GPS or RF mode: 2.3.4.1.7 tampering with equipment including: 2.3.4.1.7.2 EM device; and 2.3.4.1.7.3 strap;</p> <p><u>Spec:</u> 2.6.5.1 The EM solution must generate a tamper alert when the EM Device housing is opened or there is an attempt to open the housing;</p>	

Correctional Service Canada
EM-PII Request for Proposals
Demonstration/Testing Scenarios

Demonstration Scenario 6: Device Charging and Battery level	Expected Time Required	Reference	Comments
<p>The following actions constitute Demonstration Scenario 6:</p> <ol style="list-style-type: none"> 1. Prior to the Demonstration, ensure that a fully functional EM device has received a battery charge level between 30 % – 60 %. 2. During the Demonstration, assign a fully functional EM device with a battery charge level between 30 % – 60 % to offender C. 3. During the Demonstration, CSC will indicate that offender C has been asked to charge his EM device by the National Monitoring Center (NMC) Officer. 4. During the Demonstration, demonstrate how offender C would charge his EM device. 5. During the Demonstration, demonstrate how the NMC Officer would know whether or not offender C is charging his EM device. 6. During the Demonstration, demonstrate how the NMC Officer can determine the current charge level in the EM device. 7. During the Demonstration, demonstrate how offender C would stop charging his EM device after approximately 10 minutes, and before the time expected to reach a full charge. 8. During the Demonstration, demonstrate how the NMC Officer would know that offender C has stopped charging his EM device. 9. During the Demonstration, demonstrate how the NMC Officer can determine the current charge level in the EM device. 	<p style="text-align: center;">10:20 To 10:35</p>	<p><u>Annex A:</u> 2.3.1.8. The EM software application shall provide the ability to display the following information concerning the battery powering any EM device:</p> <ol style="list-style-type: none"> 1 battery is charging; 2 the current level of charge in the device; and 3 battery and/or charging unit is/are experiencing an equipment malfunction. 	

Correctional Service Canada
EM-P II Request for Proposals
Demonstration/Testing Scenarios

Demonstration Scenario 7A: Zone Creation and Scheduling – Inclusion zone (Must remain in)	Expected Time Required	Reference	Comments
<p>The following actions constitute Demonstration Scenario 7A:</p> <ol style="list-style-type: none"> 1. Prior to the Demonstration, create an inclusion zone for each of the following offenders which will apply for the next 12 months. Use the account created for Monitoring Officer Glenn Brown. Annex B (1 – 4) contains graphical representations of the zone boundaries. <ol style="list-style-type: none"> 1.1. Offender ‘A’ (EM reference # 10000000001A) Kingston Parole Office. Annex B-3 contains a graphical representation of the zone boundaries. 1.2. Offender ‘B’ (EM reference # 10000000002B) Kingston Parole Office. Annex B-1 contains a graphical representation of the zone boundaries. 2. During the Demonstration, create an inclusion zone for each of the following offenders which will apply for the next 12 months. Use the account created for Bob Smart. Annex B (1 – 4) contains graphical representations of the zone boundaries. <ol style="list-style-type: none"> 2.1. Offender ‘C’ (EM reference # 10000000003C) Kingston Parole Office. Use the inclusion zone previously created for use by offender B. 2.2. Offender ‘D’ (EM reference # 10000000004D) Ottawa Parole Office. 3. During the Demonstration, display all offenders’ inclusion zones. 	10:35 To 10:45	<p><u>Annex A:</u></p> <p>2.3.3.1 The EM software application shall provide the ability to define a geographical area on a map as a "zone".</p> <p>2.3.3.3 The EM software application shall provide the ability for a user to define a zone around a specified location (e.g. a school, a residence).</p> <p>2.3.1.7. The EM software application shall allow CSC to establish a schedule for each offender participating in the EM-P II, as follows:</p> <ol style="list-style-type: none"> 7.1 the schedule shall include 24 hours per day, 365 days per year (366 in leap years); 7.2 the schedule shall identify time periods during which the offender is required to be located within a particular inclusion zone; 7.3 the schedule shall identify time periods during which the offender must not be located within defined exclusion zones. <p>2.3.3.5 The EM software application shall provide the ability to distinguish zones on the graphical (map) display by applying a particular colour to a zone (e.g. green for an inclusion zone and red for an exclusion zone).</p> <p><u>Annex B:</u></p> <p>1.2.2.6 The proposed solution should provide the ability to select, sort, and print a selection of zones.</p> <p>1.2.2.7 The proposed solution should provide the ability to print zones or a selected set of zones as defined in item in textual (tabular) format or graphic (map) formats.</p>	

Correctional Service Canada
EM-PII Request for Proposals
Demonstration/Testing Scenarios

Demonstration Scenario 7-B: Zone Creation and Scheduling – Inclusion zone (Must remain in)	Expected Time Required	Reference	Comments
<p>The following actions constitute Demonstration Scenario 7B:</p> <ol style="list-style-type: none"> 1. During the Demonstration, create an inclusion zone and associated schedule for use by offender A as defined below. Use the account created for Monitoring Officer Glenn Brown. Annex D contains a graphical representation of the residence and zone boundaries. <ol style="list-style-type: none"> 1.1. Offender A has a curfew condition from 20:00hrs until 06:00hrs daily. The offender’s residence is located at 466 Union Street, Kingston Ontario, K7L 4Y8. This curfew condition will be in effect for the next 6 months. 2. During the Demonstration, demonstrate the inclusion zone that has been created for offender A. 3. During the Demonstration, demonstrate the schedule for offender A, including the schedule associated with the inclusion zone that has been created for offender A. 	<p style="text-align: center;">10:45 To 10:50</p>	<p><u>Annex A:</u></p> <p>2.3.3.1 The EM software application shall provide the ability to define a geographical area on a map as a "zone".</p> <p>2.3.3.3 The EM software application shall provide the ability for a user to define a zone around a specified location (e.g. a school, a residence).</p> <p>2.3.1.7. The EM software application shall allow CSC to establish a schedule for each offender participating in the EM-PII, as follows:</p> <ol style="list-style-type: none"> 7.1 the schedule shall include 24 hours per day, 365 days per year (366 in leap years); 7.2 the schedule shall identify time periods during which the offender is required to be located within a particular inclusion zone; 7.3 the schedule shall identify time periods during which the offender must not be located within defined exclusion zones. <p>2.3.3.5 The EM software application shall provide the ability to distinguish zones on the graphical (map) display by applying a particular colour to a zone (e.g. green for an inclusion zone and red for an exclusion zone).</p> <p>2.3.4.1 The EM software application shall detect and provide immediate notification for each of the following conditions concerning a device, whether the device is operating in GPS or RF mode:</p> <ol style="list-style-type: none"> 2.3.4.1.1 unauthorized absence and/or exit from a specified location and/or zone; 2.3.4.1.2 return and/or enter to location and/or zone from a 	

Correctional Service Canada
EM-PII Request for Proposals
Demonstration/Testing Scenarios

		<p>scheduled absence; 2.3.4.1.5 exit from an inclusion zone;</p> <p><u>Annex B:</u> 1.2.2.6 The proposed solution should provide the ability to select, sort, and print a selection of zones.</p> <p>1.2.2.7 The proposed solution should provide the ability to print zones or a selected set of zones as defined in item 1.2.2.6 above in textual (tabular) format or graphic (map) formats.</p>	
--	--	--	--

Correctional Service Canada
EM-PII Request for Proposals
Demonstration/Testing Scenarios

Demonstration Scenario 7-C: Zone Creation and Scheduling – Inclusion zone (Must remain in)	Expected Time Required	Reference	Comments
<p>The following actions constitute Demonstration Scenario 7C:</p> <ol style="list-style-type: none"> 1. During the Demonstration, create an inclusion zone and associated schedule for use by offender A as defined below. Use the account created for Monitoring Officer Glenn Brown. Annex E contains a graphical representation of the residence and zone boundaries. <ol style="list-style-type: none"> 1.1. Offender A is allowed to travel and stay overnight at his girlfriend’s residence on weekends. Her residence is located at 555 King St West, Kingston, Ontario, K7L 4V7. During weekends the offender’s curfew is from 21:00hrs until 06:00 the next day, daily. This curfew condition will be in effect for the next year. 2. During the Demonstration, demonstrate the inclusion zone that has been created for offender A. 3. During the Demonstration, demonstrate the schedule for offender A, including the schedule associated with the inclusion zone that has been created for offender A. 4. During the Demonstration, demonstrate all inclusion zones that have been created for offender A. Note that the EM software application must provide the ability to distinguish zones on the graphical (map) display by applying a particular colour to a zone (e.g. green for an inclusion zone and red for an exclusion zone). 	<p>10:50 To 10:55</p>	<p><u>Annex A:</u></p> <p>2.3.3.1 The EM software application shall provide the ability to define a geographical area on a map as a "zone".</p> <p>2.3.3.3 The EM software application shall provide the ability for a user to define a zone around a specified location (e.g. a school, a residence).</p> <p>2.3.1.7. The EM software application shall allow CSC to establish a schedule for each offender participating in the EM-PII, as follows:</p> <ol style="list-style-type: none"> 7.1 the schedule shall include 24 hours per day, 365 days per year (366 in leap years); 7.2 the schedule shall identify time periods during which the offender is required to be located within a particular inclusion zone; 7.3 the schedule shall identify time periods during which the offender must not be located within defined exclusion zones. <p>2.3.3.5 The EM software application shall provide the ability to distinguish zones on the graphical (map) display by applying a particular colour to a zone (e.g. green for an inclusion zone and red for an exclusion zone).</p> <p>2.3.4.1 The EM software application shall detect and provide immediate notification for each of the following conditions concerning a device, whether the device is operating in GPS or RF mode:</p> <ol style="list-style-type: none"> 2.3.4.1.1 unauthorized absence and/or exit from a specified location and/or zone; 2.3.4.1.2 return and/or enter to location and/or zone from a 	

Correctional Service Canada
EM-PII Request for Proposals
Demonstration/Testing Scenarios

		<p>scheduled absence; 2.3.4.1.5 exit from an inclusion zone;</p> <p><u>Annex B:</u> 1.2.2.6 The proposed solution should provide the ability to select, sort, and print a selection of zones.</p> <p>1.2.2.7 The proposed solution should provide the ability to print zones or a selected set of zones as defined in item 1.2.2.6 above in textual (tabular) format or graphic (map) formats.</p>	
--	--	--	--

Correctional Service Canada
EM-PII Request for Proposals
Demonstration/Testing Scenarios

Demonstration Scenario 7-D: Zone Creation and Scheduling – Inclusion zone (Must remain in)	Expected Time Required	Reference	Comments
<p>The following actions constitute Demonstration Scenario 7D:</p> <ol style="list-style-type: none"> 1. During the Demonstration, create an inclusion zone and associated schedule for use by offender C as defined below. Use the account created for Monitoring Officer Glenn Brown. Annex D contains a graphical representation of the residence and zone boundaries. <ol style="list-style-type: none"> 1.1. Offender C lives at the same location as offender A (466 Union Street, Kingston Ontario, K7L 4Y8). Although offender C does not have a curfew, he must be in and remain in his residence from 11:00 hrs until 11:30 hrs daily since this is when one of his victims travels through the same area as his residence. This geographical restriction condition will be in effect for the next six months. 2. During the Demonstration, demonstrate the inclusion zone that has been created for offender C. 3. During the Demonstration, demonstrate the schedule that has been created for offender C, specifically identifying the geographical restriction condition and its associated inclusion zone. 	<p>10:50 To 11:15</p>	<p><u>Annex A:</u></p> <p>2.3.3.1 The EM software application shall provide the ability to define a geographical area on a map as a "zone".</p> <p>2.3.3.3 The EM software application shall provide the ability for a user to define a zone around a specified location (e.g. a school, a residence).</p> <p>2.3.1.7. The EM software application shall allow CSC to establish a schedule for each offender participating in the EM-PII, as follows:</p> <ol style="list-style-type: none"> 7.1 the schedule shall include 24 hours per day, 365 days per year (366 in leap years); 7.2 the schedule shall identify time periods during which the offender is required to be located within a particular inclusion zone; 7.3 the schedule shall identify time periods during which the offender must not be located within defined exclusion zones. <p>2.3.3.5 The EM software application shall provide the ability to distinguish zones on the graphical (map) display by applying a particular colour to a zone (e.g. green for an inclusion zone and red for an exclusion zone).</p> <p><u>Annex B:</u></p> <p>1.2.2.6 The proposed solution should provide the ability to select, sort, and print a selection of zones.</p> <p>1.2.2.7 The proposed solution should provide the ability to print zones or a selected set of zones as defined in item in textual (tabular) format or graphic (map) formats.</p>	

Correctional Service Canada
EM-P II Request for Proposals
Demonstration/Testing Scenarios

Demonstration Scenario 8: Zone Creation and Scheduling – Exclusion zone (Must Avoid)	Expected Time Required	Reference	Comments
<p>The following actions constitute Demonstration Scenario 8:</p> <ol style="list-style-type: none"> 1. During the Demonstration, create an exclusion zone and associated schedule for use by offender A as defined below. Use the account created for Monitoring Officer Glenn Brown. Annex C contains a graphical representation of the school and zone boundaries. <ol style="list-style-type: none"> 1.1. Offender A has a special condition to avoid schools at all times. Parole Officer Peter Kane has identified the Kingston Grade School located at 443 Union Street, Kingston Ontario, K7L 4Y8 as a location that must be avoided. This condition will be in effect for the next year. 2. During the Demonstration, demonstrate the exclusion zone that has been created for offender A. 3. During the Demonstration, demonstrate the ability to attach other attributes to the specific zone. For example, type of building, location (e.g. School, rink, playground). 4. During the Demonstration, demonstrate the ability to distinguish different zones by a distinctive or different color. 	<p>11:15 To 11:30</p>	<p><u>Annex A:</u> 2.3.3.1 The EM software application shall provide the ability to define a geographical area on a map as a "zone". 2.3.3.3 The EM software application shall provide the ability for a user to define a zone around a specified location (e.g. a school, a residence). 2.3.1.7. The EM software application shall allow CSC to establish a schedule for each offender participating in the EM-P II, as follows:</p> <ol style="list-style-type: none"> 7.1 the schedule shall include 24 hours per day, 365 days per year (366 in leap years); 7.2 the schedule shall identify time periods during which the offender is required to be located within a particular inclusion zone; 7.3 the schedule shall identify time periods during which the offender must not be located within defined exclusion zones. <p>2.3.3.5 The EM software application shall provide the ability to distinguish zones on the graphical (map) display by applying a particular colour to a zone (e.g. green for an inclusion zone and red for an exclusion zone).</p> <p><u>Annex B:</u> 1.2.2.6 The proposed solution should provide the ability to select, sort, and print a selection of zones. 1.2.2.7 The proposed solution should provide the ability to print zones or a selected set of zones as defined in item in textual (tabular) format or graphic (map) formats.</p>	

Correctional Service Canada
EM-PII Request for Proposals
Demonstration/Testing Scenarios

Demonstration Scenario 9: Zone Creation and Scheduling – Mobile Proximity Zone (Must avoid certain persons)	Expected Time Required	Reference	Comments
<p>The following actions constitute Demonstration Scenario 9:</p> <ol style="list-style-type: none"> 1. During the Demonstration, the CSC employee who is wearing the EM device assigned to offender A will move to the location identified in Annex H. The EM device assigned to offender B will be kept in the demonstration room. 2. During the Demonstration, create a mobile proximity zone and associated schedule for use by offender A and offender B as defined below. Use the account created for Monitoring Officer Glenn Brown. <ol style="list-style-type: none"> 2.1. Offender A and offender B have a non-association condition. They are both restricted from coming within 200 metres (656 feet) of each other. This condition will be in effect for the next 8 months for both offenders. 3. During the Demonstration, demonstrate the mobile proximity zone that has been created for offender A. Demonstrate the mobile proximity zone that has been created for offender B. 	<p style="text-align: center;">11:30 To 11:45</p>	<p><u>Annex A:</u> 2.3.3.6 The EM software shall provide the ability to define a mobile proximity zone between two devices of at least 200 metres. If two devices come within a pre-defined distance (i.e. minimal allowable distance between the two devices) an alert will be issued. 2.3.1.6 The EM software application shall provide notifications ("alerts"). 2.3.4.1 The EM software application shall detect and provide immediate notification for each of the following conditions concerning a device, whether the device is operating in GPS or RF mode: 2.3.4.1.6 proximity to a restricted offender;</p> <p><u>Annex B:</u> 1.2.1.8 The proposed solution should allow CSC to define the distance for proximity alerts between two offenders. At minimum, the EM software should allow CSC to set an alert when two EM devices come within 50 metres of one another. The solution should allow flexibility in setting the proximity distance and provide CSC the ability to set the distance at 5 increments of 10 metres e.g. at 60m, 70m, 80m, 90m and 100m. One (1) point will be award for each increment up to a maximum of 5 points.</p>	

Correctional Service Canada
EM-PII Request for Proposals
Demonstration/Testing Scenarios

Demonstration Scenario 10A: Zone and Schedule Management – Re-sizing a previously created zone	Expected Time Required	Reference	Comments
<p>The following actions constitute Demonstration Scenario 10A:</p> <ol style="list-style-type: none"> 1. During the Demonstration, edit the zone for Kingston Grade School which was previously created during Demonstration Scenario 8. Use the account created for Senior Project Officer Bob Smart. <ol style="list-style-type: none"> 1.1. Senior Project Officer Bob Smart has been advised that the previous zone for Kingston Grade School, created for offender A was too small. This zone must be increased in all directions by approximately 5 metres (16 feet). Annex F contains a graphical representation of the school and zone boundaries. 2. During the Demonstration, demonstrate the zone that has been created for Kingston Grade School. Demonstrate how the size of the zone has been increased. 	11:45 To 11:50	<u>Annex A:</u> 2.3.3.4 The EM software application shall provide the ability to increase and decrease the size of a zone.	

Correctional Service Canada
EM-P11 Request for Proposals
Demonstration/Testing Scenarios

Demonstration Scenario 10B: Zone and Schedule Management – Displaying and listing zones	Expected Time Required	Reference	Comments
<p>The following actions constitute Demonstration Scenario 10B:</p> <ol style="list-style-type: none"> 1. During the Demonstration, demonstrate the following capabilities of the EM software application: <ol style="list-style-type: none"> 1.1. Ability to display a list of zones 1.2. Ability to display a list of zones by offender; 1.3. Ability to sort a list of zones; 1.4. Ability to perform a query against a list of zones; and 1.5. Ability to print a physical representation of the zone on a map. 	<p style="text-align: center;">11:50 To 11:55</p>	<p><u>Annex B:</u> 1.2.2 Query and Reporting Requirements</p> <p>1.2.2.1 The proposed solution should provide the capability to perform queries, including multiple criteria and the capability to set precedence.</p> <p>1.2.2.2 The proposed solution should provide the capability for a user to search by any combination of fields.</p> <p>1.2.2.3 The proposed solution should provide the capability for a user to conduct a secondary search (search horizontally) from a drill down query result.</p> <p>1.2.2.4 The proposed solution should provide the capability for a user to navigate back to a result set without re-executing the query.</p> <p>1.2.2.5 The proposed solution should provide the capability for a user to sort search results using multiple (e.g. 5) parameters.</p> <p>1.2.2.6 The proposed solution should provide the ability to select, sort, and print a selection of zones.</p> <p>1.2.2.7 The proposed solution should provide the ability to print zones or a selected set of zones as defined in item 0 above, in textual (tabular) format or graphic (map) formats.</p>	

Correctional Service Canada
EM-PII Request for Proposals
Demonstration/Testing Scenarios

Demonstration Scenario 11: Display Movement	Expected Time Required	Reference	Comments
<p>The following actions constitute Demonstration Scenario 11:</p> <ol style="list-style-type: none"> 1. During the Demonstration, display the movement records associated with offender B for the last 48 hours. The demonstration must include the following: <ol style="list-style-type: none"> 1.1. Display the movement points (every 3 minutes) on a map that includes: <ol style="list-style-type: none"> 1.1.1. a street/road map view; and 1.1.2. a satellite view. 1.2. Ability to visually differentiate the data points pertaining to a particular offender. For example, applying different coloured points or a number sequence. 1.3. Ability to display the date and time of each movement point. 1.4. Ability to display the GPS coordinates (longitude and latitude) associated with each movement point. 1.5. Ability to display the street address associated with each movement point. 1.6. Ability to display the accuracy rating for each movement point. 	<p>11:55 To 12:00</p>	<p><u>Annex A:</u></p> <p>2.3.1.5 The EM software application shall allow CSC to track offender movement by displaying the location of a particular EM device on a map.</p> <p>2.3.2.1. The EM software application shall display the locations of EM devices on a graphical display by means of:</p> <ol style="list-style-type: none"> 1.1 a street / road map; and 1.2 a satellite map. <p>2.3.2.2. The EM software application shall provide the ability to sequentially number data points when they appear on the maps.</p> <p>2.3.2.3. The EM software application shall display the following information for any data point detected:</p> <ol style="list-style-type: none"> 3.1 the date and time the EM device was detected at that location; and 3.2 the GPS coordinates of the location. <p><u>Spec:</u></p> <p>2.3.1 The EM device must provide a location sampling rate of three (3) minutes or more frequently.</p> <p><u>Annex B:</u></p> <p>1.2.1.16 The EM software application should provide the ability to display the accuracy of each individual location data point. The proposal should include a description of this capability.</p>	

Correctional Service Canada
EM-PII Request for Proposals
Demonstration/Testing Scenarios

Demonstration Scenario 12: Ability to transition between GPS tracking and Radio Frequency monitoring	Expected Time Required	Reference	Comments
<p>The following actions constitute Demonstration Scenario 12:</p> <ol style="list-style-type: none"> 1. During the Demonstration, demonstrate the ability to transition between GPS tracking and Radio Frequency monitoring. 2. During the Demonstration, set the GPS data gathering rate to intervals of one minute. 3. During the Demonstration, set the range for Radio Frequency monitoring to 15 metres (50 feet). 4. Offender B is required to participate in a program at 443 Union Street, Kingston Ontario, K7L 4Y8 – Elmhirst House (identified in Annex I). The program runs from 13:50 until 15:00 daily. The program begins on the day of the Demonstration and continues for the next 3 months. 5. In the Demonstration room, demonstrate the following: <ol style="list-style-type: none"> 5.1. Complete any and all configuration required to enable the RF equipment to demonstrate the functionality required by this scenario. Demonstrate the “set-up” and/or configuration actions performed. 5.2. Demonstrate the ability to set the RF range. 5.3. Demonstrate the ability to assign any associated schedules and/or zones. 	<p style="text-align: center;">13:00 To 14:30</p>	<p><u>Annex A:</u></p> <p>2.3.1.4. The EM software application shall communicate with the electronic monitoring devices whether they are operating in GPS or RF modes.</p> <p><u>Spec:</u></p> <p>2.6.3. The EM device must be capable of providing time stamped messages to EM Data Centre within four (4) minutes of the occurrence of any or all of the following events:</p> <p>2.6.3.2 Entering RF unit range</p> <p>2.6.3.3 Leaving RF unit range</p> <p>2.6.5. The EM solution must send a tamper alert when;</p> <p>2.6.5.2 RF unit housing is opened or there is an attempt to open the housing;</p> <p>2.6.5.3 RF unit is moved out of its installed position in any direction, including tilt.</p> <p>2.8 RF unit monitoring requirements</p> <p>2.8.1 The EM device must be capable of communicating with minimum of one (1) RF unit;</p> <p><u>Annex B:</u></p> <p>1.2.1.3 As a contractual requirement in the Statement of Work, the Monitoring / Management application must allow the display of GPS location information for each device at the "normal" frequency - no less frequently than once every 3 minutes. However, it would be valuable for CSC to have options</p>	

Correctional Service Canada
EM-PII Request for Proposals
Demonstration/Testing Scenarios

		<p>for GPS data gathering / display. The proposal should describe the capabilities of the proposed device with respect to the following desirable capabilities:</p> <p>1.2.1.3.1. set different GPS data gathering rates/intervals on a "per-device" basis;</p> <p>1.2.1.3.2 establish a schedule of GPS data gathering on a "per-device" basis which allows different data gathering rates/intervals to be set for various periods during a day (e.g. normal sleeping periods, normal working hours, travelling times). The proposal should describe the configurability options in terms of number of configurable periods and data gathering frequency options, and the type of user interface used;</p> <p>1.2.1.3.3. The proposed solution should allow a user to manually set the frequency of data gathering per offender. The proposal should describe the frequency options available (e.g. every 10 seconds, every 30 seconds, every minute, and every 15 minutes) and should clearly identify the minimum, maximum, and increments that can be configured.</p>	
--	--	---	--

Correctional Service Canada
EM-PII Request for Proposals
Demonstration/Testing Scenarios

Demonstration Scenario 13: No Communication or Location from EM Device	Expected Time Required	Reference	Comments
<p>The following actions constitute Demonstration Scenario 13:</p> <ol style="list-style-type: none"> 1. The CSC employee who is wearing the EM device assigned to offender B will move to a location that CSC has determined has no GPS or cellular coverage. The CSC employee will remain at this location for a minimum of 10 minutes. 2. During the Demonstration, demonstrate all alerts and/or other messages associated with the entire scenario. 	<p style="text-align: center;">14:30 To 15:00</p>	<p><u>Annex A:</u></p> <p>2.3.4 Alerts and Alert Management</p> <p>2.3.4.1 The EM software application shall detect and provide immediate notification for each of the following conditions concerning a device, whether the device is operating in GPS or RF mode:</p> <p>2.3.4.1.8 loss or interruption of GPS tracking</p> <p>2.3.4.1.9 loss or interruption of cellular service;</p>	

Correctional Service Canada
EM-PII Request for Proposals
Demonstration/Testing Scenarios

Demonstration Scenario 14: Accuracy – RF	Expected Time Required	Reference	Comments
<p>The following actions constitute Demonstration Scenario 14:</p> <ol style="list-style-type: none"> 1. The CSC employee who is wearing the EM device assigned to offender B will move to Elmhirts House. 2. Demonstrate that the RF equipment has become activated. 3. The following exercise will be conducted (repeated) a total of ten (10) times, as described in Annex K: <ol style="list-style-type: none"> 3.1. The CSC employee who is wearing the EM device assigned to offender B will move to a point 15 metres (50 feet) from the location of the RF equipment. The CSC employee will remain at this location for at least one (1) minute. 3.2. The CSC employee will move to a point 1 metre (3 feet) farther from the location of the RF equipment. The CSC employee will remain at this location for at least one (1) minute. 3.3. The CSC employee will continue to move 1 metre (3 feet) farther from the location of the RF equipment until advised that the appropriate alert has been received. 3.4. The CSC employee will return to Elmhirts House and prepare to repeat the test. 4. During the Demonstration, demonstrate all alerts and/or other messages associated with the entire scenario. 	<p>15:00 To 15:30</p>	<p><u>Spec:</u> 2.8 RF unit monitoring requirements 2.8.3 The RF unit range accuracy must be fifteen (15) metres or better 90% of the time.</p>	

Correctional Service Canada
EM-P11 Request for Proposals
Demonstration/Testing Scenarios

Demonstration Scenario 15: Access auditing	Expected Time Required	Reference	Comments
<p>The following actions constitute Demonstration Scenario 15:</p> <ol style="list-style-type: none"> 1. Demonstrate the ability to create and display an audit trail of activities by any particular user. Use each of the following accounts: Peter Kane, Robert Smith, Mary Lewis, Glenn Brown and Bob Smart. 2. Demonstrate that all actions performed during the demonstration have been recorded in the audit log, including, as a minimum, all of the following: <ol style="list-style-type: none"> 2.1. Successful log-on attempts; 2.2. Unsuccessful log-on attempts; 2.3. Account locking events; 2.4. Account un-locking events; 2.5. User log-off 2.6. Access to an offender's file 2.7. Editing or updating an offender's file 	<p>15:30 To 16:00</p>	<p><u>Annex A:</u> 2.3.5 In order to assist CSC to meet its PGS and MITS obligations, the EM software application shall comply with the requirements defined in this Section 2.3.5.</p> <ol style="list-style-type: none"> 1. The EM software application shall provide: <ol style="list-style-type: none"> 1.4 an audit facility to record and review actions taken; 1.9 system audit and monitoring capabilities; 2. The EM software application shall incorporate security features and functions that restrict access to specific data elements within the database, based on the user profile. 3. The EM software application shall provide detailed audit trail functionality to track and trace all data accesses by users to application information. <p><u>Annex B:</u> 1.2.1.18 The following events should be recorded in the EM system audit log and available for querying, reporting, and review by a CSC system administrator:</p> <ol style="list-style-type: none"> 1.2.1.18.1. successful log-on attempts; 1.2.1.18.2. unsuccessful log-on attempts; 1.2.1.18.3. account locking events; 1.2.1.18.4. account unlocking events; and 1.2.1.18.5. user log-off. 	

Correctional Service Canada
EM-PII Request for Proposals
Demonstration/Testing Scenarios

Testing Scenario 1: EM Device Installation and Removal	Expected Time Required	Reference(s)	Comments
<p>Testing Scenario 1 builds upon Demonstration Scenario 4. The following actions constitute Testing Scenario 1:</p> <ol style="list-style-type: none"> 1. During the Test, demonstrate that an EM device can be removed easily in the field by non-EM trained medical or police personnel by cutting the strap holding the EM device assigned to offender B with disposable medical scissors, provided by CSC. See Annex J for a picture of the disposable medical scissors that will be used during the Demonstration. 2. During the Test, demonstrate any and all alerts and/or other messages received by the EM software which are associated with the strap being cut. 	<p style="text-align: center;">09:45 To 10:05</p>	<p><u>Spec:</u></p> <p>2.1.4 The strap of the EM device must accommodate both male and female wearers in terms of ankle circumference, i.e. from a circumference of 176 mm as a minimum to a circumference of at least 300 mm.</p> <p>2.6.5. 1 The EM solution must generate a tamper alert when the EM Device housing is opened or there is an attempt to open the housing;</p> <p>2.10.1 The EM device strap must be capable of being cut off, for emergency removal, with disposable medical scissors as defined by 21 CFR 880.6820 (FDA).</p> <p><u>Annex A:</u></p> <p>2.3.1.6 The EM software application shall provide notifications ("alerts").</p> <p>2.3.4.1 The EM software application shall detect and provide immediate notification for each of the following conditions concerning a device, whether the device is operating in GPS or RF mode:</p> <p>2.3.4.1.3 equipment malfunctions including, but not limited to:</p> <p>2.3.4.1.7 tampering with equipment including:</p> <p>2.3.4.1.7.1 EM device; and</p> <p>2.3.4.1.7.13 strap;</p>	

Correctional Service Canada
EM-PII Request for Proposals
Demonstration/Testing Scenarios

Testing Scenario 2: Device Charging and Battery level	Expected Time Required	Reference	Comments
<p>Testing Scenario 3 builds upon Demonstration Scenario 6. The following actions constitute Testing Scenario 3:</p> <ol style="list-style-type: none"> 1. Prior to the Test, ensure that a fully functional EM device has received a battery charge level between 30 % – 80 %. 2. During the Test, assign a fully functional EM device with a battery charge level between 30 % – 60 % to offender C. 3. During the Test, CSC will indicate that offender C has been asked to charge his EM device by the National Monitoring Center (NMC) Officer. 4. During the Test, demonstrate how offender C would charge his EM device. 5. During the Test, demonstrate how the NMC Officer would know whether or not offender C is charging his EM device. 6. During the Test, demonstrate how the NMC Officer can determine the current charge level in the EM device. 7. During the Test, demonstrate how offender C would stop charging his EM device after approximately 10 minutes, and before the time expected to reach a full charge. 8. During the Test, demonstrate how the NMC Officer would know that offender C has stopped charging his EM device. 9. During the Test, demonstrate how the NMC Officer can determine the current charge level in the EM device. 	<p style="text-align: center;">10:20 To 10:35</p>	<p><u>Annex A:</u> 2.3.1.8. The EM software application shall provide the ability to display the following information concerning the battery powering any EM device:</p> <ol style="list-style-type: none"> 1 battery is charging; 2 the current level of charge in the device; and 3 battery and/or charging unit is/are experiencing an equipment malfunction. 	

Correctional Service Canada
EM-PII Request for Proposals
Demonstration/Testing Scenarios

Testing Scenario 3A: Zone Creation and Scheduling – Inclusion zone (Must remain in)	Expected Time Required	Reference	Comments
<p>Testing Scenario 4A builds upon Demonstration Scenario 7A. The following actions constitute Testing Scenario 4A:</p> <ol style="list-style-type: none"> 1. During the Test, the CSC employee who is wearing the EM device assigned to offender A will move outside of the inclusion zone assigned to offender A to a predetermined location as depicted in Annex G. The CSC employee will stay at this location for approximately 6 minutes, after which the employee will return to the inclusion zone. Demonstrate all the alerts and/or other messages associated with this scenario. 	<p>10:35 To 10:45</p>	<p><u>Annex A:</u></p> <p>2.3.1.7. The EM software application shall allow CSC to establish a schedule for each offender participating in the EM-PII, as follows:</p> <p>7.2 the schedule shall identify time periods during which the offender is required to be located within a particular inclusion zone;</p> <p>7.3 the schedule shall identify time periods during which the offender must not be located within defined exclusion zones.</p> <p>2.3.3.1 The EM software application shall provide the ability to define a geographical area on a map as a "zone".</p> <p>2.3.3.3 The EM software application shall provide the ability for a user to define a zone around a specified location (e.g. a school, a residence).</p> <p>2.3.4.1 The EM software application shall detect and provide immediate notification for each of the following conditions concerning a device, whether the device is operating in GPS or RF mode:</p> <p>2.3.4.1.1 unauthorized absence and/or exit from a specified location and/or zone;</p> <p>2.3.4.1.2 return and/or enter to location and/or zone from a scheduled absence;</p> <p>2.3.4.1.5 exit from an inclusion zone;</p>	

Correctional Service Canada
EM-PII Request for Proposals
Demonstration/Testing Scenarios

Testing Scenario 3B: Zone Creation and Scheduling – Inclusion zone (Must remain in)	Expected Time Required	Reference	Comments
<p>1. Testing Scenario 4B builds upon Demonstration Scenario 7D. During the Test, prior to 11:00, a CSC employee who is carrying the EM device assigned to offender C will move into the restriction area (his residence), and remained there for approximately 10 minutes. The CSC employee will then exit the restriction zone prior to the time when the offender is to remain in his residence. Demonstrate all the alerts and/or other messages associated with this scenario.</p>	<p>10:50 To 11:15</p>	<p><u>Annex A:</u></p> <p>2.3.1.7. The EM software application shall allow CSC to establish a schedule for each offender participating in the EM-PII, as follows:</p> <p style="padding-left: 40px;">7.2 the schedule shall identify time periods during which the offender is required to be located within a particular inclusion zone;</p> <p>2.3.4.1 The EM software application shall detect and provide immediate notification for each of the following conditions concerning a device, whether the device is operating in GPS or RF mode:</p> <p style="padding-left: 40px;">2.3.4.1.1 unauthorized absence and/or exit from a specified location and/or zone;</p> <p style="padding-left: 40px;">2.3.4.1.2 return and/or enter to location and/or zone from a scheduled absence;</p> <p style="padding-left: 40px;">2.3.4.1.5 exit from an inclusion zone;</p>	

Correctional Service Canada
EM-P11 Request for Proposals
Demonstration/Testing Scenarios

Testing Scenario 4: Zone Creation and Scheduling – Exclusion zone (Must Avoid)	Expected Time Required	Reference	Comments
<p>1. Testing Scenario 5 builds upon Demonstration Scenario 8. During the Test, the CSC employee who is wearing the EM device assigned to offender A will move into the exclusion zone and remained there for approximately 5 minutes. The CSC employee will then exit the exclusion zone. Demonstrate all the alerts and/or other messages associated with this scenario.</p>	<p>11:15 To 11:30</p>	<p><u>Annex A:</u> 2.3.1.7. The EM software application shall allow CSC to establish a schedule for each offender participating in the EM-P11, as follows: 7.3 the schedule shall identify time periods during which the offender must not be located within defined exclusion zones; 2.3.3.1 The EM software application shall provide the ability to define a geographical area on a map as a "zone". 2.3.3.3 The EM software application shall provide the ability for a user to define a zone around a specified location (e.g. a school, a residence). 2.3.4.1 The EM software application shall detect and provide immediate notification for each of the following conditions concerning a device, whether the device is operating in GPS or RF mode: 2.3.4.1.1 unauthorized absence and/or exit from a specified location and/or zone; 2.3.4.1.2 return and/or enter to location and/or zone from a scheduled absence; 2.3.4.1.5 exit from an inclusion zone;</p>	

Correctional Service Canada
EM-P II Request for Proposals
Demonstration/Testing Scenarios

Testing Scenario 5: Zone Creation and Scheduling – Mobile Proximity Zone (Must avoid certain persons)	Expected Time Required	Reference	Comments
<p>1. Testing Scenario 6 builds upon Demonstration Scenario 9. During the Test, the CSC employee who is wearing the EM device assigned to offender A will return to the test room. Demonstrate all the alerts and/or other messages associated with this scenario.</p>	<p>11:30 To 11:45</p>	<p><u>Annex A:</u> 2.3.1.6 The EM software application shall provide notifications ("alerts"). 2.3.3.6 The EM software shall provide the ability to define a mobile proximity zone between two devices of at least 200 metres. If two devices come within a pre-defined distance (i.e. minimal allowable distance between the two devices) an alert will be issued. 2.3.4.1 The EM software application shall detect and provide immediate notification for each of the following conditions concerning a device, whether the device is operating in GPS or RF mode: 2.3.4.1.6 proximity to a restricted offender;</p> <p><u>Annex B:</u> 1.2.1.8 The proposed solution should allow CSC to define the distance for proximity alerts between two offenders. At minimum, the EM software should allow CSC to set an alert when two EM devices come within 50 metres of one another. The solution should allow flexibility in setting the proximity distance and provide CSC the ability to set the distance at 5 increments of 10 metres e.g. at 60m, 70m, 80m, 90m and 100m. One (1) point will be award for each increment up to a maximum of 5 points.</p>	

Correctional Service Canada
EM-PII Request for Proposals
Demonstration/Testing Scenarios

Testing Scenario 6: Ability to transition between GPS tracking and Radio Frequency monitoring	Expected Time Required	Reference	Comments
<ol style="list-style-type: none"> 1. Testing Scenario 7 builds upon Demonstration Scenario 12. The CSC employee who is wearing the EM device assigned to offender B will move to the designated area identified in Annex I. 2. The Test will be conducted in the Test room. At least one member of the Bidder team will be positioned in Elmhirst House to assist with the following: <ol style="list-style-type: none"> 2.1. The CSC employee who is wearing the EM device assigned to offender B will move to Elmhirst House. 2.2. The CSC employee, assisted by the member of the Bidder team, will move the RF equipment. 2.3. The CSC employee, assisted by the member of the Bidder team, will unplug the power to the RF equipment (or remove the battery). 2.4. The CSC employee, assisted by the member of the Bidder team, will tamper with the RF equipment. 2.5. The CSC employee will leave Elmhirst House prior to the end of the scheduled program. 3. Display the following: <ol style="list-style-type: none"> 3.1. Display all alerts and/or other messages associated with the entire scenario. 3.2. Display the movement points (every 1 minute) on a map (street/road map view and satellite view) for the duration of the scenario and at least 15 minutes following the time that the EM device exited the zone. 	13:00 To 14:30	<p><u>Spec:</u></p> <p>2.6.3. The EM device must be capable of providing time stamped messages to EM Data Centre within four (4) minutes of the occurrence of any or all of the following events:</p> <p>2.6.3.2 Entering RF unit range</p> <p>2.6.3.3 Leaving RF unit range</p> <p>2.6.5. The EM solution must send a tamper alert when;</p> <p>2.6.5.2 RF unit housing is opened or there is an attempt to open the housing;</p> <p>2.6.5.3 RF unit is moved out of its installed position in any direction, including tilt.</p>	

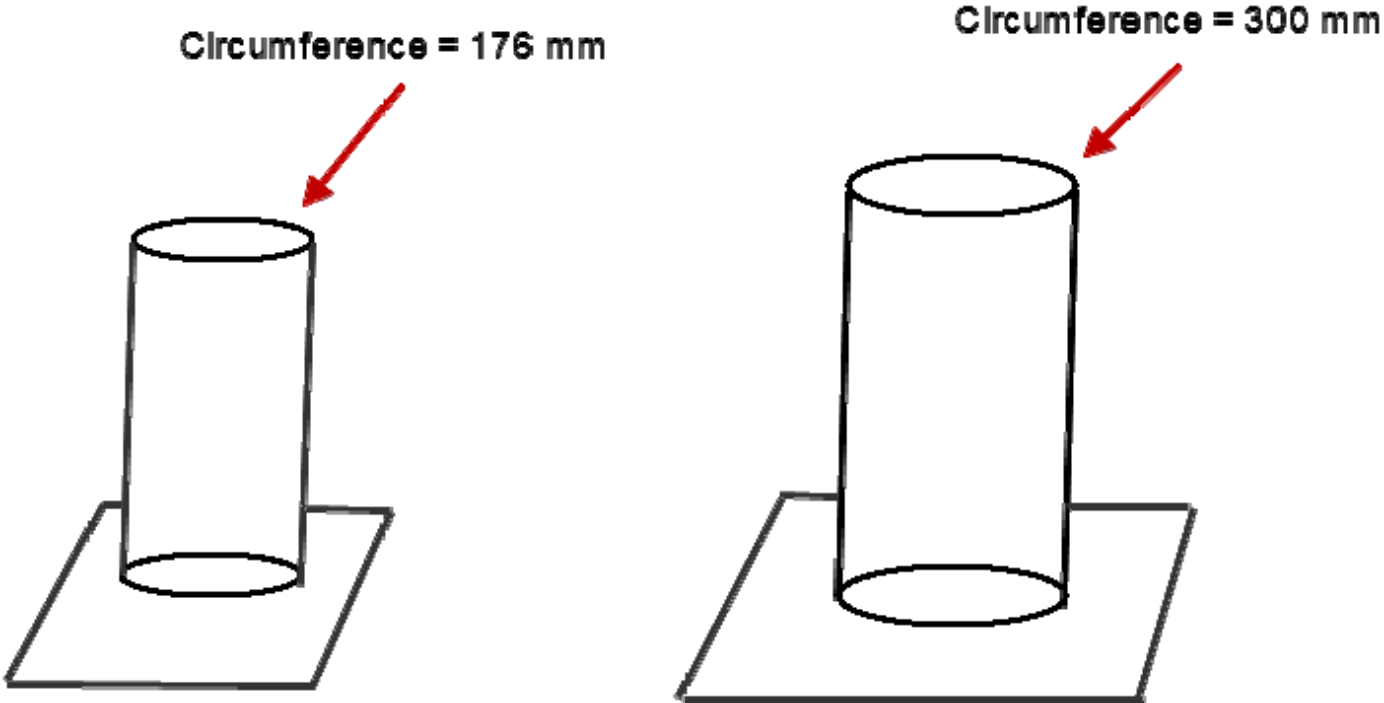
Correctional Service Canada
EM-PII Request for Proposals
Demonstration/Testing Scenarios

Testing Scenario 7: Accuracy – GPS/GPS Assisted Tracking	Expected Time Required	Reference	Comments
<p>The following actions constitute Testing Scenario 8:</p> <ol style="list-style-type: none"> 1. Provide two fully functional EM devices to CSC for “Testing Scenario 8”. (Bidders will be provided an opportunity to leave two devices with the CSC staff during the Demonstration session or ship them to CSC staff prior to “Testing Scenario 8”.) 2. During the evening prior to the day of Testing Scenario 8, CSC will fully charge the two EM devices. 3. CSC will contact the Bidder during the evening to confirm that the two EM devices are charging correctly. 4. CSC will contact the Bidder immediately prior to the start of Testing Scenario 8 to confirm that two EM devices are fully functional and are currently gathering data points via GPS. 5. The Bidder must send an email to CSC at Erik.Gaudreault@csc-scc.gc.ca to confirm that the two EM devices are fully functional and currently gathering data points via GPS. 6. CSC will position the two EM devices in an open field with an unobstructed view of the sky for a pre-determined length of time. The accuracy testing will be conducted between the hours of 9:30 am ET and 5:30pm ET and will consist of three periods of 1.5 hours each. 7. CSC will position two EM devices in a residential wooden structure both above (upstairs) and below (basement) grade for a predetermined length of time. The accuracy testing will be conducted between the hours of 9:30 am ET and 5:30 pm ET and consist of three periods of 1 hours each. 8. CSC will contact the Bidder immediately prior to the start of the GPS Assisted Tracking Testing to confirm that the two EM devices are fully functional and are currently gathering data points via the cellular network and not GPS. 9. The Bidder must collect movement records (based on gathering data 	<p>09:30 To 17:30</p>	<p><u>Spec:</u></p> <p>2.2. EM device location accuracy requirements</p> <p>2.2.1. The EM solution must meet the accuracy levels indicated within the scenarios below:</p> <p style="padding-left: 40px;">2.2.1.1. With the offender location components in an open air environment with no obstructions, the EM device must provide a location that is accurate within 10 metres 90% of the time.</p> <p style="padding-left: 40px;">2.2.1.2 With the EM device placed in a location where no GPS signal is received but cellular signal is present, the EM device must provide a location that is accurate within 150 metres 90% of the time.</p>	

Correctional Service Canada
EM-P11 Request for Proposals
Demonstration/Testing Scenarios

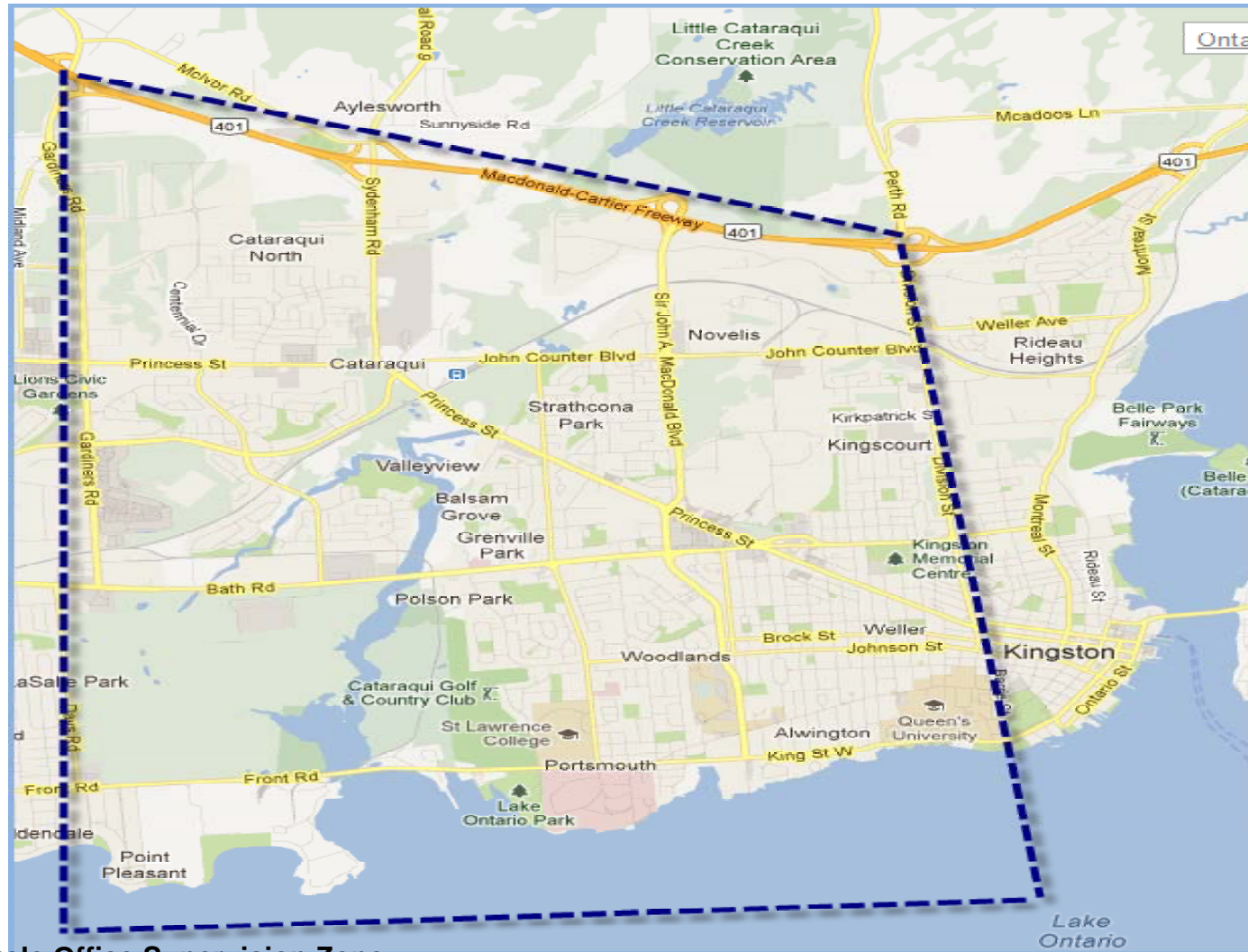
<p>points every three minutes) for the period from 9:30 am ET to 5:30pm ET of the day of the testing for both EM devices.</p> <p>10. The Bidder must deliver the movement records for both EM devices to CSC within 24 hours of the completion of the test. A file containing the data is to be sent to; Erik.Gaudreault@csc-scc.gc.ca.</p>			
--	--	--	--

Annex A – Device Installation Structures



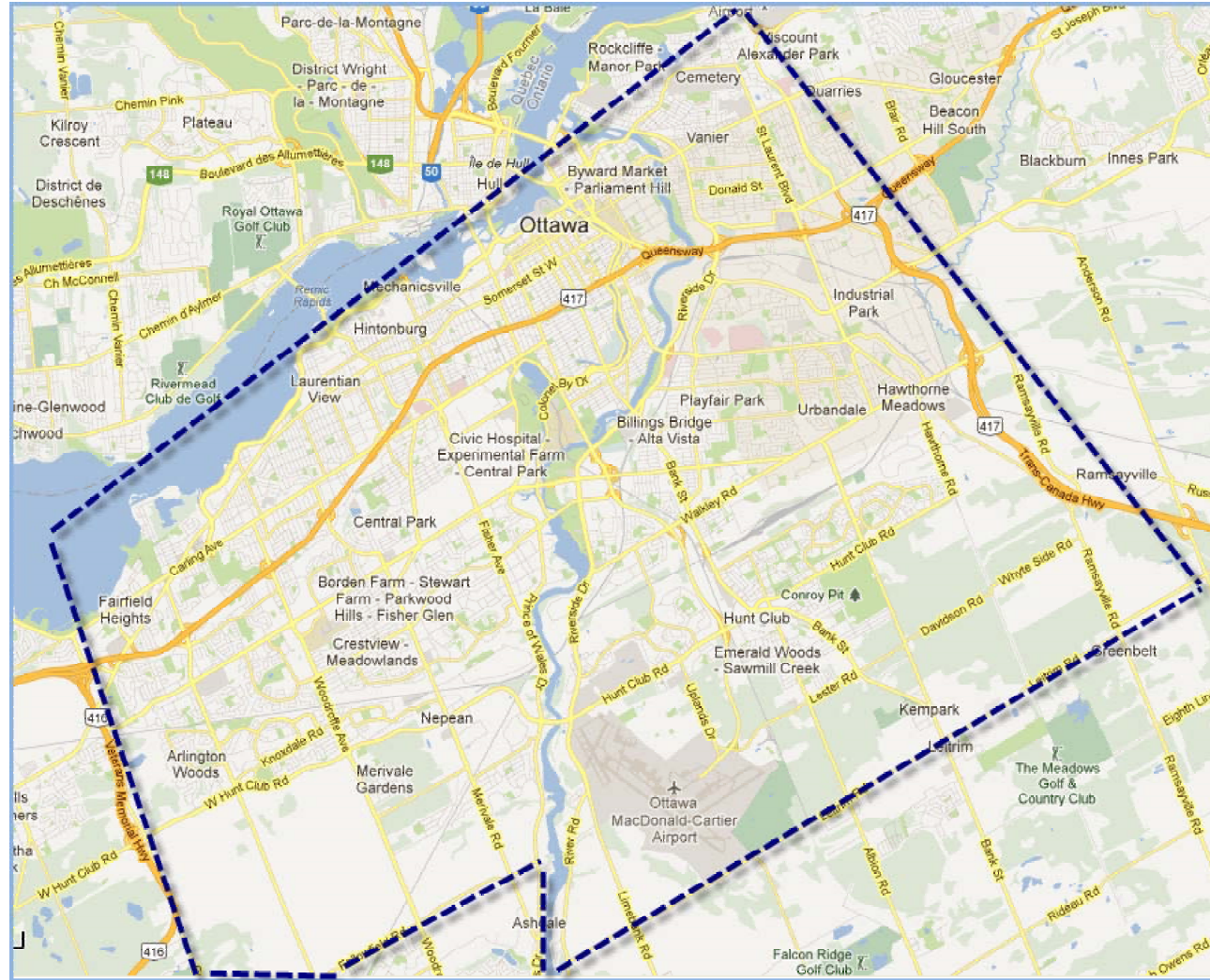
Correctional Service Canada
EM-PII Request for Proposals
Demonstration/Testing Scenarios

Annex B (1) – Kingston Parole Office Supervision Zone



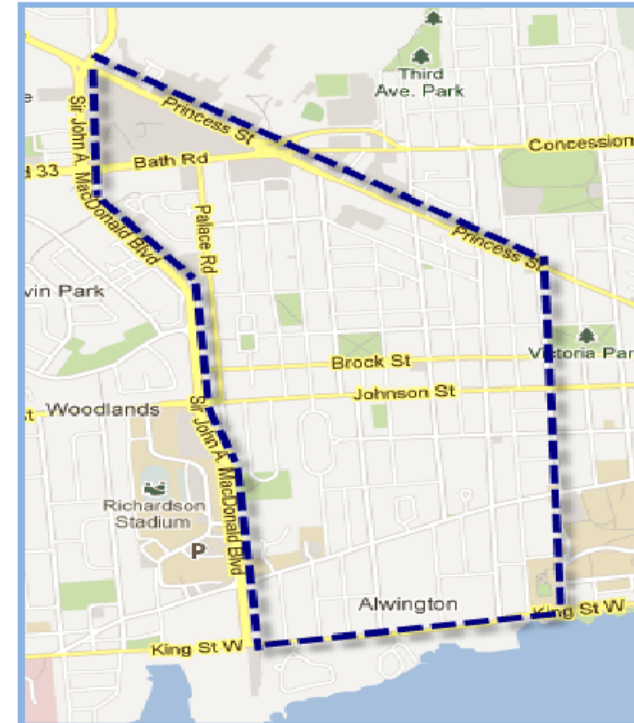
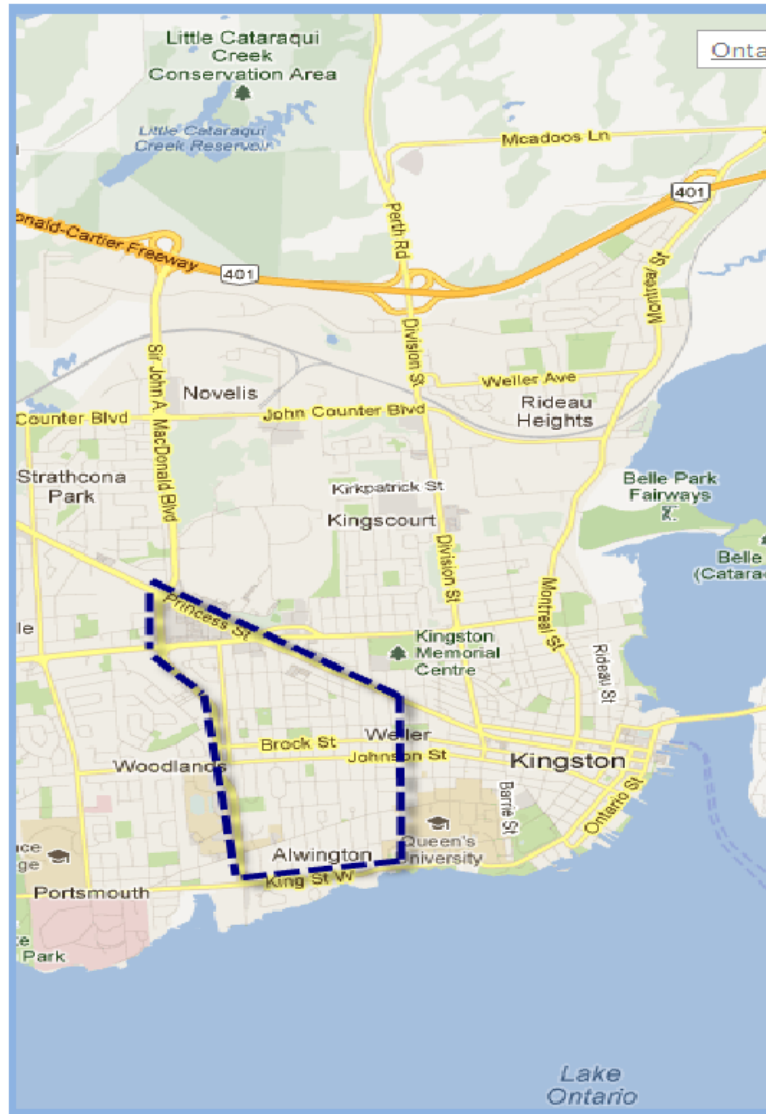
Annex B (2) – Ottawa Parole Office Supervision Zone

Correctional Service Canada
EM-PII Request for Proposals
Demonstration/Testing Scenarios



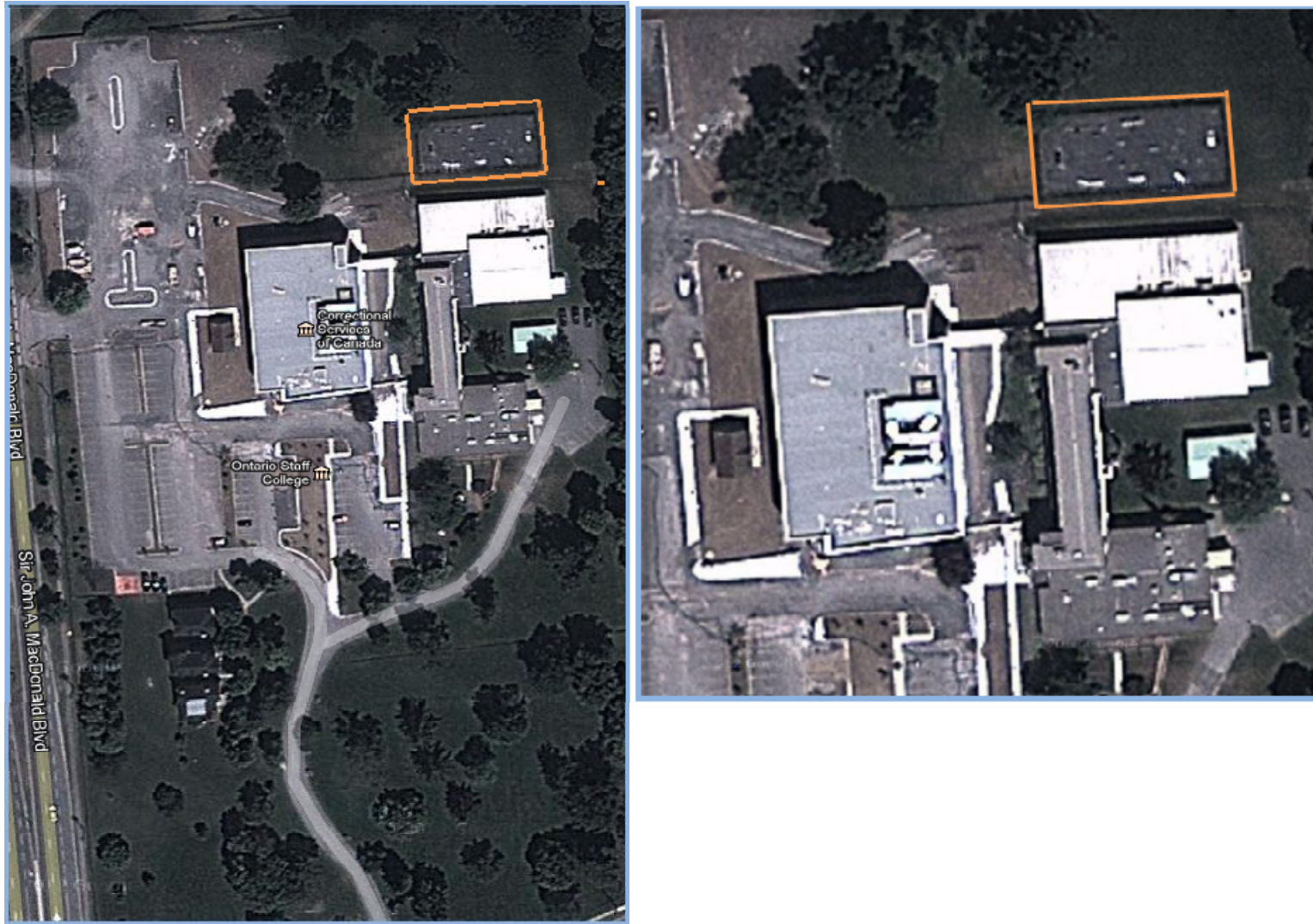
Annex B (3) – Offender A’s Individual Supervision Zone

Correctional Service Canada
EM-P11 Request for Proposals
Demonstration/Testing Scenarios



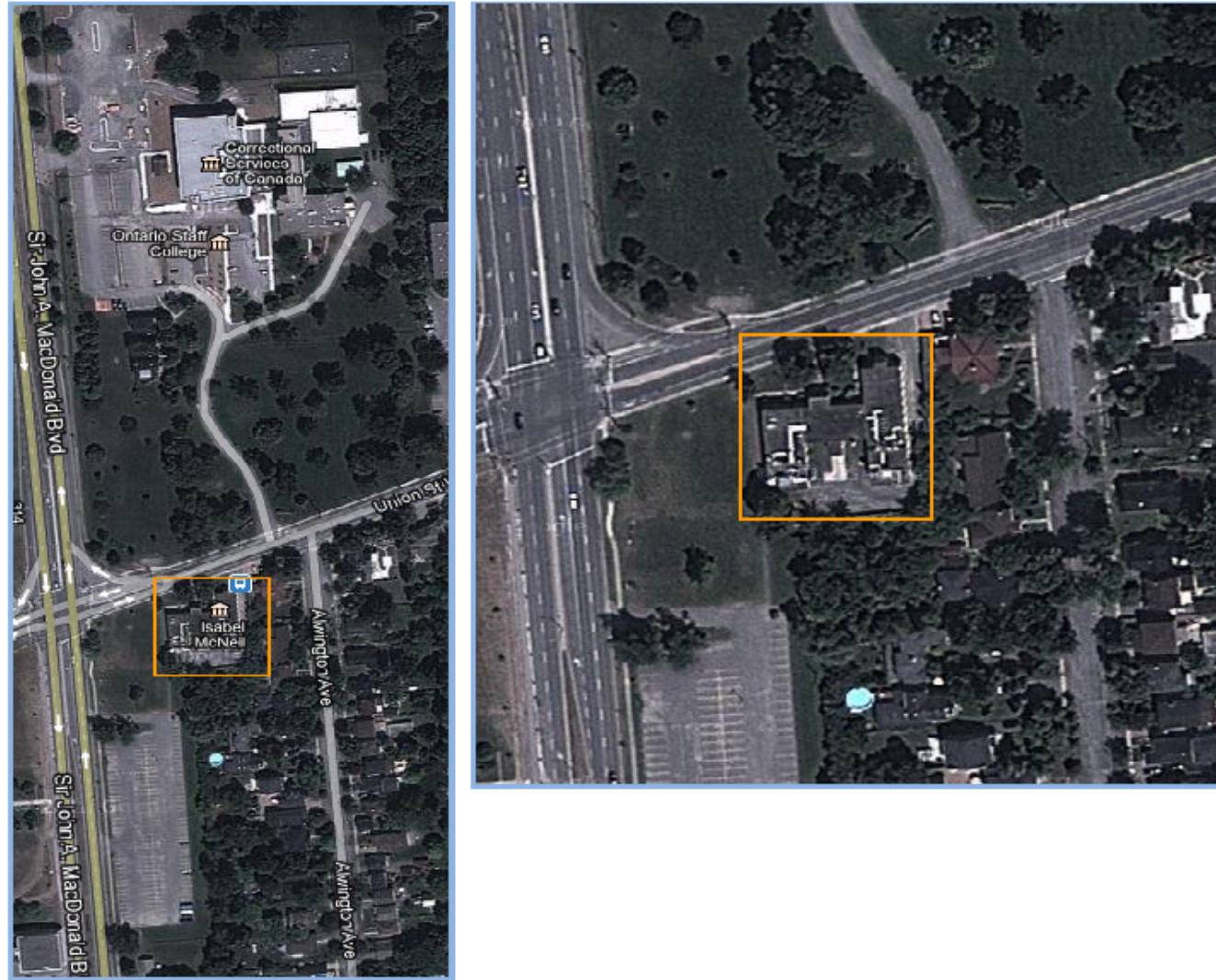
Annex C – Kingston Grade School - 443 Union Street West, Kingston, Ontario, K7L 4Y8

Correctional Service Canada
EM-P11 Request for Proposals
Demonstration/Testing Scenarios



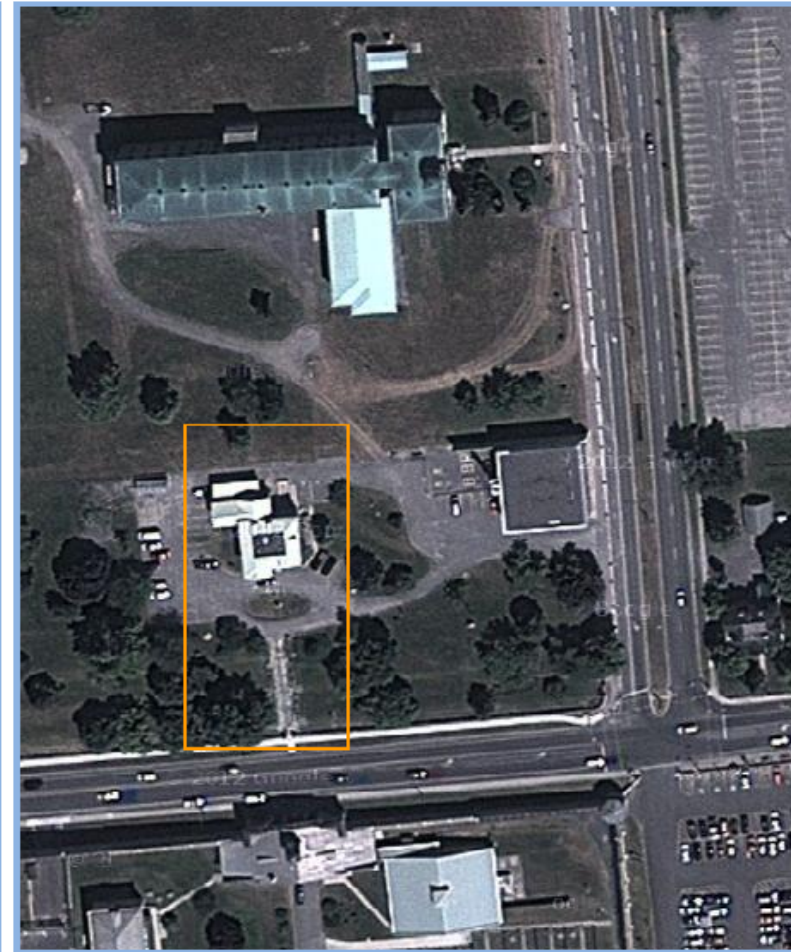
Annex D – Offender A’s Residence - 446 Union Street West, Kingston, Ontario, K7L 2S1

Correctional Service Canada
EM-P11 Request for Proposals
Demonstration/Testing Scenarios



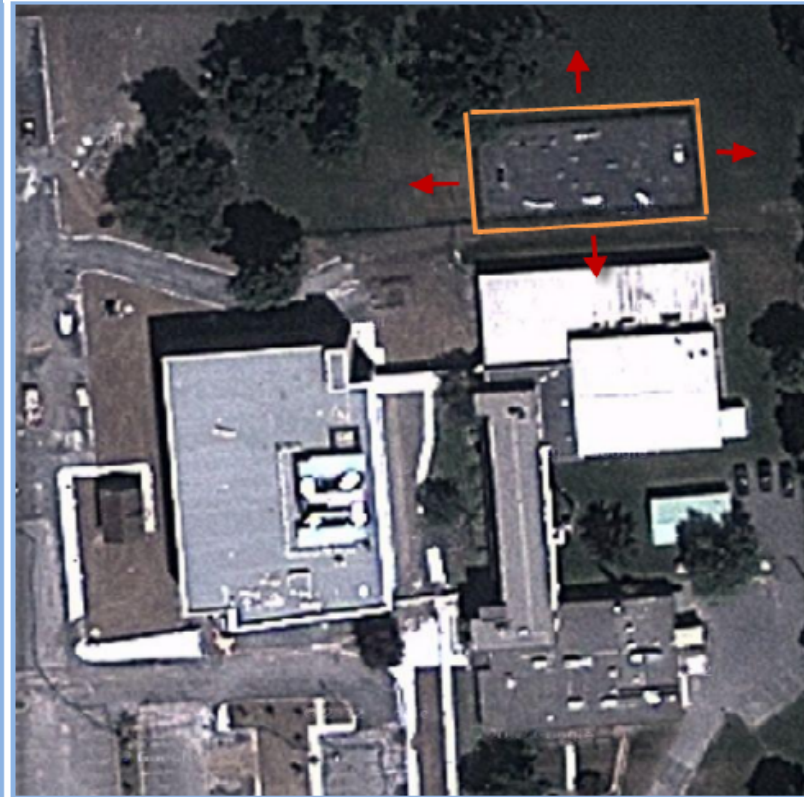
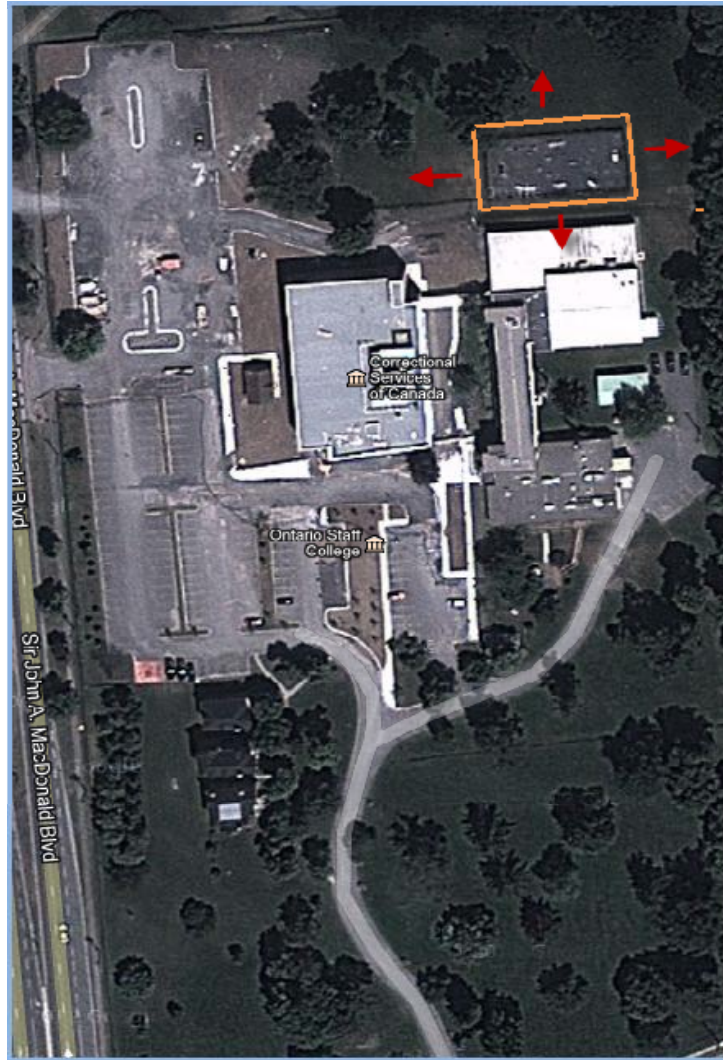
Annex E – Offender A’s Girlfriends House - 555 King Street West, Kingston, ON, K7L 4V7

Correctional Service Canada
EM-P11 Request for Proposals
Demonstration/Testing Scenarios

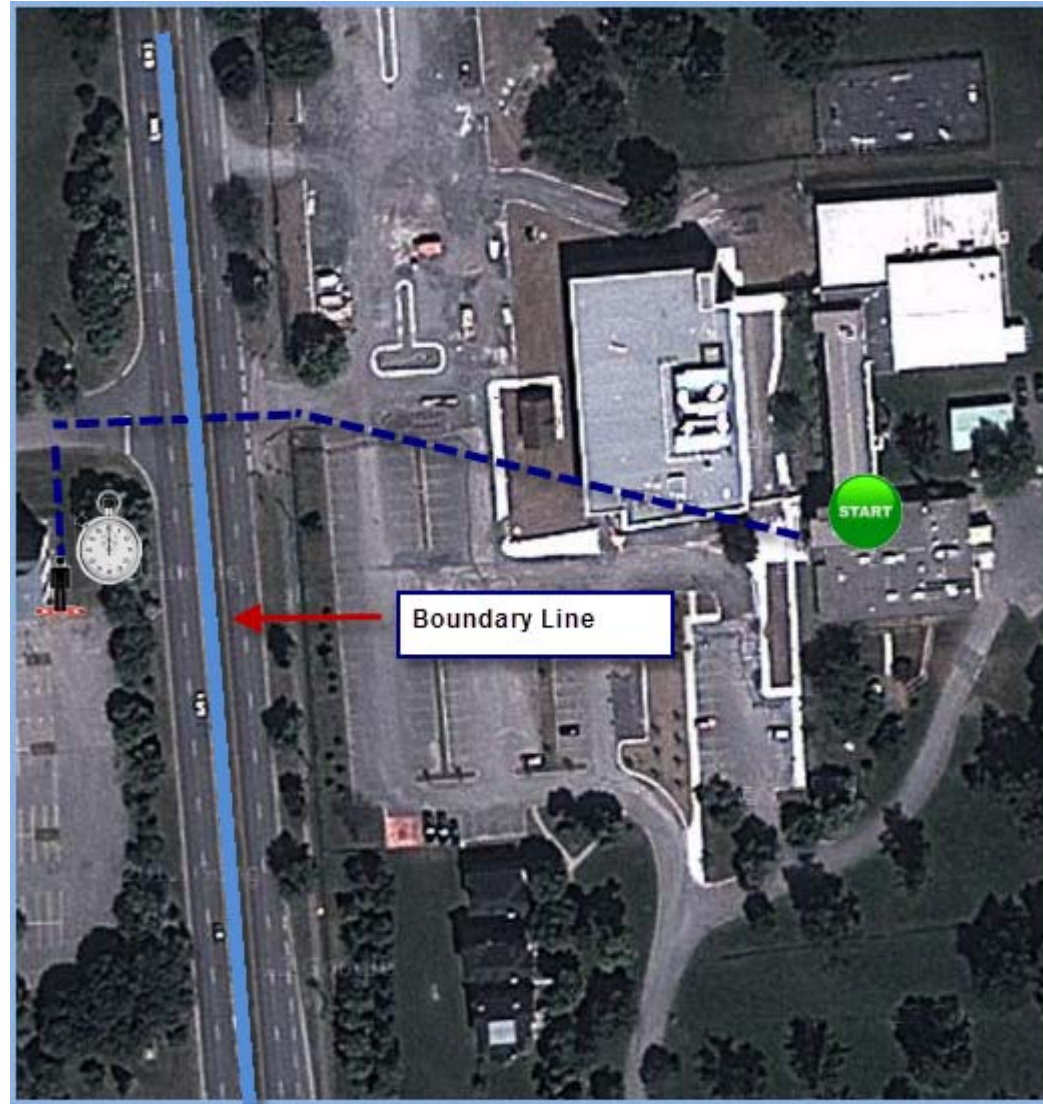


Annex F – Expanding Zones by 5 metres / 16 feet

Correctional Service Canada
EM-P11 Request for Proposals
Demonstration/Testing Scenarios



Annex G – Leaving an inclusion Zone



Correctional Service Canada
EM-P11 Request for Proposals
Demonstration/Testing Scenarios

Annex H – Proximity

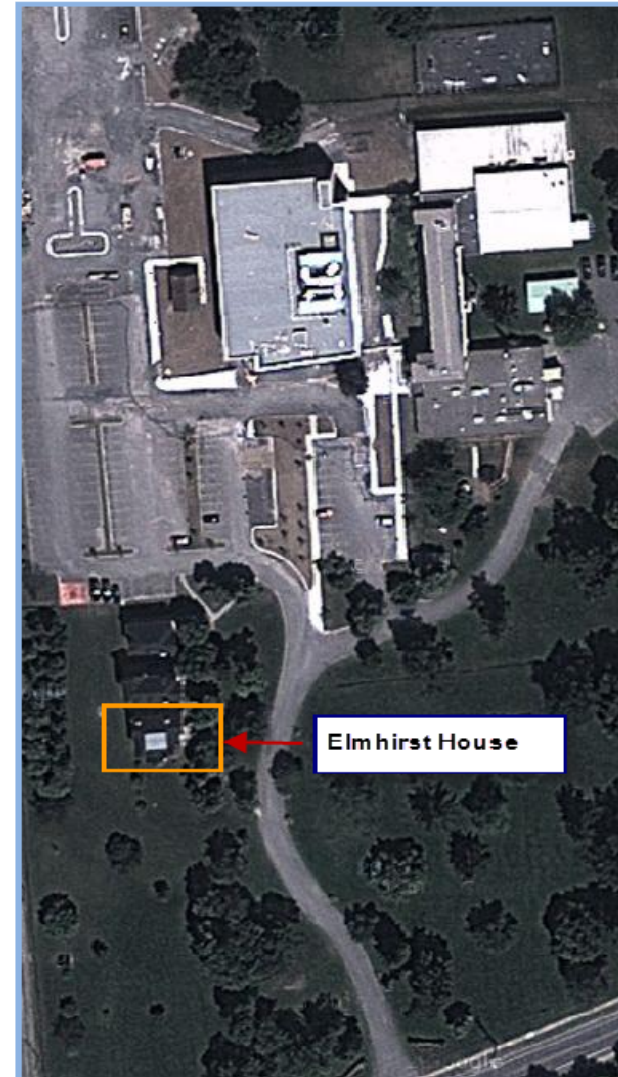


Correctional Service Canada
EM-P11 Request for Proposals
Demonstration/Testing Scenarios

Annex I – Elmhirst House – 443 Union Street W, Kingston, Ontario, K7L 4Y8



Elmhirst House - Front View



Annex J - Disposable Medical Scissors (compliant with 21 CFR 880.6280 (FDA))



Annex K – RF Test sequence/path of movement

Correctional Service Canada
EM-PII Request for Proposals
Demonstration/Testing Scenarios

