

ADDENDUM No. 1

BUILDING ENVELOPE REMEDIATION
Project No. R.060702.001

The following changes in the tender documents are effective immediately. This addendum will form part of the contract documents.

1.0 CHANGES AND CLARIFICATIONS

SPECIFICATIONS

- 1.1 00 01 10 TABLE OF CONTENTS
ADD – Appendix C – Lead Analysis Report by DST Consulting Engineers Inc, and Asbestos Analysis Report by Asbestos Analytical Services Ltd. Issued September 18, 2013.
- 1.2 01 11 55 GENERAL INSTRUCTIONS
1.02 TIME OF COMPLETION
REVISE Sentence .1 to read ‘Commence work upon notification of acceptance and complete in sequence indicated within sixteen (16) weeks.
- 1.3 02 83 10 LEAD BASE PAINT ABATEMENT – MINIMUM PRECAUTIONS
REPLACE with REVISED Section 02 83 10 Lead Base Paint Abatement – Minimum Precautions, Issued for Addendum #01, September 18, 2013.

DRAWINGS

- 1.4 DRAWING No. BE1.0 – SITE PLAN
REPLACE with REVISED DRAWING BE1.0 – SITE PLAN, Issued for Addendum #01, September 18, 2013.
- 1.5 DRAWING No. BE2.0 – ELEVATIONS
REPLACE with REVISED DRAWING BE2.0 – ELEVATIONS, Issued for Addendum #01, September 18, 2013.
- 1.6 DRAWING No. BE2.1 – ELEVATIONS
REPLACE with REVISED DRAWING BE2.1 – ELEVATIONS, Issued for Addendum #01, September 18, 2013.
- 1.7 DRAWING No. BE2.2 – ELEVATIONS
REPLACE with REVISED DRAWING BE2.2 – ELEVATIONS, Issued for Addendum #01, September 18, 2013.

2.0 RESPONSE TO CONTRACTOR QUERIES:

Q #1: Are washroom facilities available?

A #1: Public washrooms are available at the free-standing public washroom building located by the main entry.

Q #2: Dryer Addition – South elevation: is space available in existing parking lot area for equipment use while working on south elevation of the Dryer Addition?

A #2: Requested area is under the jurisdiction of the Steveston Harbour Authority. Contractor is responsible for requesting permission for use of area and pay associated fees. Steveston Harbour Authority, Contact: Bob Baziuk, Tel: 604.272.5539, Fax: 604.271.6142.

Q #3: Does the existing glazing putty contain asbestos?

A #3: Asbestos testing has concluded that there is no asbestos within the glazing putty samples tested on September 18, 2013. Refer to 1.1 above.

Q #4: The tender documents call for complete removal of paint coatings and some contain hazardous substances. Accordingly we ask, do we need to enclose the work area for removal and disposal of hazardous coatings?

A #4: Refer to Section 01 56 00 Temporary Barriers & Enclosures, Issued July 30, 2013, Sentences 1.04.1 and 1.06. Weathertight enclosures are required all work including lead paint abatement, repair and repainting work. Note it is the responsibility of the Contractor to determine the precautions necessary to comply with existing environmental standards. The containment methods can vary according to the removal methods that will be employed by the Contractor.

Q #5: Based on your budget there is not enough funding to complete a lead abatement of 100% of the coatings, we suggest partial removal of what is loose and over coat. Besides removing 100% of any coatings will be extremely time consuming and difficult on wood siding and multiple other surfaces.

A #5: Bid project as specified. 100% abatement of existing coatings is required. Refer to 1.3 above.

Q #6: The provided schedule of 6 weeks is not adequate to complete this project, 16 weeks is requested if you maintain a 100% abatement of the coatings, if removal of loose coatings and recoating than 12 weeks is requested.

A #6: Refer to 1.2 above.

Q #7: You note lead and PCB's present in the coatings, can you share your lab report and what level of lead abatement are you specifying?

A #7: Level of lead abatement to be in accordance with Canada Labour Code Part II – Occupational Health and Safety Regulations. Refer to Appendix A and Appendix B of Tender Package for lead and PCB reports. Refer to 1.1 above.

Q #8: Cannery Building – West Elevation: is fastening of scaffolding to structure permitted? Space is very tight and over water where it is not possible to erect traditional scaffolding.

A #8: Scaffolding must be erected in compliance with WorkSafe BC requirements. After dismantling and removal of scaffolding, make good any penetrations from removed fastenings, if used, from structure and patch sand and paint to match.

Q #9: Is the Contractor responsible for BC Hydro connections?

A #9: In accordance with Section 01 14 00 – Work Restrictions, Article 1.06 Existing Services and the Facilities Management of the Gulf of Georgia Cannery Society.

END OF ADDENDUM No. 1

APPENDIX C



LEAD ANALYSIS REPORT

12138 FORTH AVENUE, STEVESTON, BC

Client: PWGSC Environmental Services	Date: September 18, 2013
Attention: Ms. Amy Moizumi	Date Submitted: September 18, 2013
Project Name: Lead-Based Coating Samples	
DST Project Number: BE-VC-O/H	

LEAD-BASED COATING SAMPLE ANALYSIS RESULTS

Sample Number	Location / Description	Color	Result (mg/cm ²)	Lead-Based Coating
Sample A	Window Putty Paint – Sample B	White	0.09	Yes
Sample B	Window Putty Paint – Sample B	White	0.16	Yes

ANALYTICAL METHODOLOGY:

A Niton X-Ray Fluorescence (XRF) spectroscopy detector was used to make measurements on suspect building painted surfaces. The Niton XRF is designed to detect and quantify the amount of lead present primarily in painted surfaces. Measurements were made following Niton XRF standard operating procedures for lead in surface coating measurements.

Suspect surface coating samples analyzed were identified to have hazardous levels of lead (600 ppm or ≥ 0.05 mg/cm²) with a detection limit of ≥ 0.02 mg/cm².



Asbestos Analytical Services Ltd.

7 - 2883 East Kent Avenue N., Vancouver, BC, V5S 3T9

ASBESTOS ANALYSIS REPORT

Project Location: Gulf of Georgia Cannery,
12138 Forth Avenue, Steveston, BC

Reference #s: BE-VC-017423

Number of Samples: 2

AASL Report #: **B00398**

Analyst: Gabrielle Sutton

Report Date: 18SEP2013

Method: NIOSH Method 9002

# B00398	Sample	Sub-Sample	Sample Description / Location	Results	ASB
1 *	Sample A	Single Phase - white	Window Putty, Sample A, Exterior Wall, Window	Asbestos Fibres Not Detected 90 - 100 % Non-Fibrous	---
2. 1	Sample B	Layer 1 - thin pale grey (paint)	Window Putty, Sample B, Exterior Wall, Window	Asbestos Fibres Not Detected 90 - 100 % Non-Fibrous	---
2. 2 *	Sample B	Layer 2 - white	Window Putty, Sample B, Exterior Wall, Window	Asbestos Fibres Not Detected 90 - 100 % Non-Fibrous	---

Comments

Samples analyzed in accordance with NIOSH Laboratory Method 9002

American Industrial Hygiene Association (AIHA) BAPAT Program Laboratory Number 204301

Estimated Limit of Detection is <0.5 %

ASB = Asbestos present/absent in material

T = Asbestos Present

AASL Asbestos Analytical Services Ltd. will not accept any responsibility as to the manner of interpretation or application of these results.

* Sample preparation included grinding process.

Analyst: Original Signed By

Gabrielle Sutton, B.A.

Date: September 18, 2013

Original Signed By

Reviewed By: Gabrielle Sutton, B.A.



Page 1 of 1

Box 398

BE-VC-017423

Project #:

Gulf of Georgia Cannery, 12138 Forth Avenue, Steveston, BC

Project Name / Location:

[illegible]

Regulatory Jurisdiction:

<input checked="" type="checkbox"/> BC	<input type="checkbox"/> ON	<input type="checkbox"/> QC
<input type="checkbox"/> AB	<input type="checkbox"/> MB	<input type="checkbox"/> Other

Fax#:

Send analytical results to: Attention: C. Injates

Email: cinjates@dstgroup.com

Date: _____

Date:

☒ RUSH☐ 3-day Regular☐ Other (specify)

Samples relinquished by:

Samples received at AASL by:

Sep 18/2013 11:45am

1 GENERAL

1.01 SUMMARY

- .1 Comply with requirements of this Section when performing following Work:
 - .1 Removal of lead-containing coatings and hazardous materials using a power tool with an effective dust collection system equipped with a HEPA filter where indicated on drawings.

1.02 RELATED REQUIREMENTS

- .1 Section 00 41 99 – Demolition for Minor Works.
- .2 Section 09 91 00 – Painting.

1.03 REFERENCES

- .1 Department of Justice Canada
 - .1 Canadian Environmental Protection Act, 1999 (CEPA).
- .2 Health Canada
 - .1 Workplace Hazardous Materials Information System (WHMIS), Material Safety Data Sheets (MSDS).
- .3 Human Resources and Social Development Canada (HRSDC)
 - .1 Canada Labour Code Part II, - SOR 86-304 - Occupational Health and Safety Regulations.
- .4 Transport Canada (TC)
 - .1 Transportation of Dangerous Goods Act, 1992 (TDGA).
- .5 U.S. Environmental Protection Agency (EPA)
 - .1 EPA 747-R-95-007-1995, Sampling House Dust for Lead.
- .6 U.S. Department of Labour - Occupational Safety and Health Administration (OSHA) - Toxic and Hazardous Substances
 - .1 Lead in Construction Regulation - 29 CFR 1926.62-[1993].
- .7 Underwriters' Laboratories of Canada (ULC)

1.04 DEFINITIONS

- .1 HEPA vacuum: High Efficiency Particulate Air filtered vacuum equipment with a filter system capable of collecting and retaining fibres greater than 0.3 microns in any direction at 99.97% efficiency.
- .2 Authorized Visitors: Departmental Representative or designated representatives.
- .3 Polyethylene: polyethylene sheeting or rip-proof polyethylene sheeting with tape along edges, around penetrating objects over cuts and tears, and elsewhere as required to provide protection and isolation. For protection of underlying surfaces from damage and to prevent lead dust entering in clean area.
- .4 Sprayer: garden reservoir type sprayer or airless spray equipment capable of producing mist or fine spray. Must be appropriate capacity for scope of work.

- .5 Action level: employee exposure, without regard to use of respirators, to airborne concentration of lead of 50 micrograms per cubic meter of air (50 ug/m³) calculated as 8-hour time-weighted average (TWA). Minimum precautions for lead abatement are based on airborne lead concentrations less than 0.05 milligrams per cubic meter of air for removal of lead based paint by methods noted in paragraph 1.1.
- .6 Competent person: individuals capable of identifying existing lead hazards in workplace taking corrective measures to eliminate them.
- .7 Lead dust: wipe sampling on vertical surfaces and/or horizontal surfaces, dust and debris is considered to be lead contaminated if it contains more than 40 micrograms of lead in dust per square foot.

1.05 ACTION AND INFORMATIONAL SUBMITTALS

- .1 Provide submittals in accordance with Section 01 33 00 - Submittal Procedures.
- .2 Provide proof satisfactory to Departmental Representative that suitable arrangements have been made to dispose of lead based paint waste in accordance with requirements of authority having jurisdiction.
- .3 Provide proof of Contractor's General Insurance.
- .4 Quality Control:
 - .1 Provide Departmental Representative necessary permits for transportation and disposal of lead based paint waste and proof that lead based paint waste has been received and properly disposed.
 - .2 Provide proof satisfactory to Departmental Representative that employees have had instruction on hazards of lead exposure, respirator use, dress, and aspects of work procedures and protective measures.

1.06 QUALITY ASSURANCE

- .1 Regulatory Requirements: comply with Federal, Provincial/Territorial and local requirements pertaining to lead paint, provided that in case of conflict among those requirements or with these specifications more stringent requirement applies. Comply with regulations in effect at time work is performed.
- .2 Health and Safety:
 - .1 Do construction occupational health and safety in accordance with Section 01 35 29.06 - Health and Safety Requirements and WorkSafe regulations and standards.
 - .2 Safety Requirements: worker and visitor protection.
 - .1 Protective equipment and clothing to be worn by workers and visitors in work Area include:
 - .1 Half mask respirator: half-mask particulate respirator with N - series filter, and 95 % efficiency could be provided.
 - .2 Eating, drinking, chewing, and smoking are not permitted in work area.
 - .3 Ensure workers wash hands and face when leaving work area. Facilities for washing are located where approved by Departmental Representative.
 - .4 Visitor Protection:
 - .1 Instruct Authorized Visitors procedures to be followed in entering and exiting work area.

1.07 WASTE MANAGEMENT AND DISPOSAL

- .1 Handle and dispose of hazardous materials in accordance with CEPA, TDGA, Regional and Municipal regulations.
- .2 Disposal of lead waste generated by removal activities must comply with Federal, Provincial, Territorial and Municipal regulations. Dispose of lead waste in sealed double thickness 6 ml bags or leak proof drums. Label containers with appropriate warning labels.
- .3 Provide manifests describing and listing waste created. Transport containers by approved means to licensed landfill for burial.

1.08 EXISTING CONDITIONS

- .1 Reports and information pertaining to lead based paint to be handled, removed, or otherwise disturbed and disposed of during this Project are bound into this specification.
- .2 Notify Departmental Representative of lead based paint discovered during Work and not apparent from drawings, specifications, or report pertaining to Work. Do not disturb such material until instructed by Departmental Representative.

1.09 SCHEDULING

- .1 Not later than two days before beginning Work on this Project notify following in writing:
 - .1 Appropriate Regional or Zone Director of Medical Services Branch, Health Canada.
 - .2 Provincial Ministry of Labour.
 - .3 Disposal Authority.
- .2 Inform sub trades of presence of lead-containing materials identified in Existing Conditions.
- .3 Provide Departmental Representative copy of notifications prior to start of Work.

1.10 PERSONNEL TRAINING

- .1 Provide Departmental Representative satisfactory proof that every worker has had instruction and training in hazards of lead exposure, in personal hygiene, in aspects of work procedures, and in use, cleaning, and disposal of respirators.
- .2 Instruction and training related to respirators includes, at minimum:
 - .1 Proper fitting of equipment.
 - .2 Inspection and maintenance of equipment.
 - .3 Disinfecting of equipment.
 - .4 Limitations of equipment.
- .3 Instruction and training must be provided by competent, qualified person.
- .4 Supervisory personnel to complete required training.

2 PRODUCTS**2.01 MATERIALS**

- .1 Polyethylene 0.15 mm thick unless otherwise specified; in sheet size to minimize joints.

- .2 Tape: fibreglass - reinforced duct tape suitable for sealing polyethylene under dry conditions and wet conditions using amended water.
- .3 **Paint Removal System: paste application, non-toxic, non-carcinogenic and nonflammable.**
 - .1 **Acceptable product:**
 - .1 **Dumond Chemicals Inc.: Peel Away 1 (Paste & Paper) with Citri-Lize Neutralizer.**
 - .2 **Or pre-approved alternative.**
- .4 Lead waste containers: type acceptable to dump operator with tightly fitting covers and 0.15 mm thickness sealable polyethylene liners.
 - .1 Label containers with pre-printed bilingual cautionary Warning Lead clearly visible when ready for removal to disposal site.

3 EXECUTION

3.01 SUPERVISION

- .1 One Supervisor for every ten workers is required.
- .2 Supervisor must remain within work area during disturbance, removal, or handling of lead based paints.

3.02 PREPARATION

- .1 Remove and store items to be salvaged or reused.
 - .1 Protect and wrap items and transport and store in area specified by Departmental Representative.
- .2 Work Area:
 - .1 Shut off and isolate HVAC system to prevent dust dispersal into other building areas. Conduct smoke tests to ensure duct work is airtight.
 - .2 Seal off openings with polyethylene sheeting and seal with tape.
 - .3 Maintain emergency fire exits or establish alternatives satisfactory to Authority having jurisdiction.
 - .4 Where water application is required for wetting lead containing materials, provide temporary water supply appropriately sized for application of water as required.
 - .5 Provide electrical power and shut off for operation of powered tools and equipment. Provide 24 volt safety lighting and ground fault interrupter circuits on power source for electrical tools, in accordance with applicable CSA Standard. Ensure safe installation of electrical cables and equipment.
- .3 Do not start work until:
 - .1 Arrangements have been made for disposal of waste.
 - .2 Tools, equipment, and materials waste containers are on site.
 - .3 Arrangements have been made for building security.
 - .4 Notifications have been completed and preparatory steps have been taken.

3.03 LEAD ABATEMENT

- .1 Removal of lead-containing coatings with a chemical ~~gel or~~ paste and fibrous ~~paper in accordance with manufacturer's written instructions. laminated cloth wrap; or removal equipped with HEPA filters; or removal with using power tools- non-powered hand tool, other than manual scraping and sanding.~~

- .2 Remove lead based paint in small sections and pack as it is being removed in sealable 0.15 mm plastic bags and place in labelled containers for transport.
- .3 Seal filled containers. Clean external surfaces thoroughly by wet sponging. Remove from immediate working area to staging area. Clean external surfaces thoroughly again by wet sponging. Wash containers thoroughly pending removal to outside. Ensure containers are removed by workers who have entered from uncontaminated areas dressed in clean coveralls.
- .4 After completion of stripping work, **rinse off surfaces and use nylon wire bristle** brush and wet sponge surface from which lead based paint has been removed **to remove remaining visible material**. During this work keep surfaces wet.
- ~~.5 After **bristle** brushing and wet sponging to remove visible lead based paint, and after encapsulating lead containing material impossible to remove, **neutralize surfaces in accordance with manufacturer's written instructions. wet clean entire work area, and equipment used in process. After inspection by Departmental Representative apply continuous coat of slow drying sealer to surfaces of work area.**~~

3.04 INSPECTION

- .1 Perform inspection to confirm compliance with specification and governing authority requirements. Deviations from these requirements not approved in writing by Departmental Representative will result in work stoppage, at no cost to Owner.
- .2 Departmental Representative will inspect work for:
 - .1 Adherence to specific procedures and materials.
 - .2 Final cleanliness and completion.
 - .3 No additional costs will be allowed by Contractor for additional labour or materials required to provide specified performance level.

3.05 FINAL CLEANUP

- .1 Following cleaning and when lead wipe surfaces sampling are below acceptable concentrations, proceed with final cleanup.
- .2 Remove polyethylene sheet by rolling it away from walls to centre of work area. Vacuum visible lead containing particles observed during cleanup, immediately, using HEPA vacuum.
- .3 Place polyethylene sheets, tape, cleaning material, clothing, and contaminated waste in plastic bags and sealed labelled waste containers for transport.
- .4 Conduct final check to ensure no dust or debris remains on surfaces as result of dismantling operations.

3.06 RE-ESTABLISHMENT OF OBJECTS AND SYSTEMS

- .1 Repair or replace objects damaged in course of work to their original state or better, as directed by Departmental Representative.

END OF SECTION

LIST OF DRAWINGS:

- BE1.0 SITE PLAN
BE2.0 ELEVATIONS
BE2.1 ELEVATIONS
BE2.2 ELEVATIONS

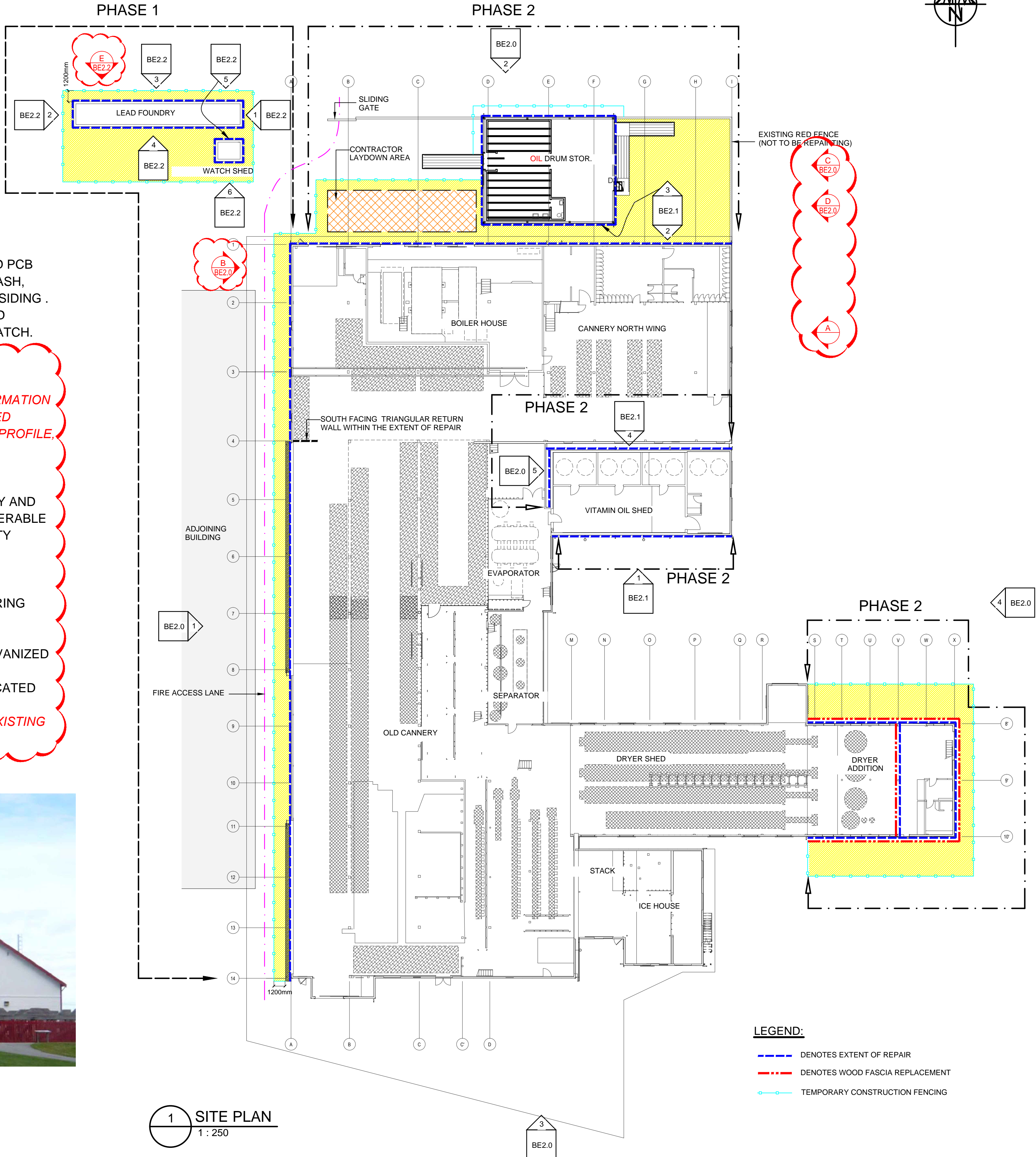
SUMMARY OF REPAIR

IN ACCORDANCE WITH SPECIFICATION:

1. REMOVAL OF ALL EXISTING EXTERIOR PAINT (INCLUDING LEAD-CONTAINING) AND PCB FINISH TO SUBSTRATE FROM WOOD FASCIA, SIDING, CORNERS, DOORS, WINDOW SASH, DOOR AND WINDOW FRAMES, SECURITY GRILLES, LOUVRES, AND EXISTING METAL SIDING .
2. REMOVAL AND DISPOSAL OF EXISTING DETERIORATED FASCIA AS INDICATED AND INSTALLATION OF MARINE GRADE PLYWOOD OF SAME DIMENSIONS, PAINTED TO MATCH.
3. IDENTIFY TO DEPARTMENT REPRESENTATIVE LOCATIONS OF ALL EXISTING DETERIORATED WOOD SIDING, TRIMS, SILLS, FASCIA AND BOXES WHICH ARE NOT ACCEPTABLE SUBSTRATES FOR REPAINTING. UPON REVIEW AND WRITTEN CONFIRMATION FROM DEPARTMENTAL REPRESENTATIVE, REMOVE AND DISPOSE OF DETERIORATED SUBSTRATES AND INSTALL NEW MARINE GRADE FIR WOOD SUBSTRATES OF SAME PROFILE, SIZE, THICKNESS. PAINT TO FINISH.
4. TEMPORARY REMOVAL OF EXISTING OPERABLE WOOD FRAME WINDOWS AND REPLACEMENT OF EXISTING INTERIOR AND EXTERIOR GLAZING PUTTY AND SEALANTS.REMOVAL OF WOOD ROT FROM WINDOW FRAMES, PATCHED WITH PUTTY AND REPAINTED. REINSTALLATION OF WINDOW FRAMES WITH SASHES RENDERED INOPERABLE WITH FASTENERS. TEMPORARY REMOVAL AND REINSTALLATION EXISTING SECURITY GRILLES AS INDICATED (LEAD FOUNDRY AND WATCH SHED).
5. CLEANING AND REPAIR OF INTERIOR WOOD GUTTERS WITH MEMBRANE WHERE INDICATED (LEAD FOUNDRY AND WATCH SHED).
6. TEMPORARY REMOVAL OF EXISTING SIGNAGE, GUTTERS AND DOWNSPOUTS DURING REMEDIATION. REINSTALLATION OF ALL REMOVED ITEMS UPON COMPLETION OF REMEDIATION WORK.
7. REPAIR AND REPAINTING OF FOUR SMALL WOOD BOXES AS INDICATED AND GALVANIZED METAL FENCING AS INDICATED.
8. REMOVAL AND STORAGE OF EXISTING SECURITY GRILLES ON WINDOWS AS INDICATED (CANNERY BUILDING - NORTH AND WEST ELEVATIONS).
9. SOFFITS AND RAFTERS OF ALL AREAS INCLUDED IN SCOPE OF WORK TO HAVE EXISTING PAINT REMOVED AND REPAINTED.



A PHOTOGRAPH OF PARTIAL EAST ELEVATION
N.T.S.



- LEGEND:
- DENOTES EXTENT OF REPAIR
 - DENOTES WOOD FASCIA REPLACEMENT
 - TEMPORARY CONSTRUCTION FENCING

KEYNOTES

NUMBER	DESCRIPTION
A300	EXISTING PAINTED HORIZONTAL FIR SIDING. REMOVE EXISTING FINISH, PATCH WOOD AND SAND WHERE REQUIRED AND RE-PAINT. WHERE EXISTING SUBSTRATE IS NOT ACCEPTABLE FOR REPAINTING, INSTALL NEW DOUGLAS FIR SIDING, NO. 2 OR BETTER OF MATCHING PROFILE AND PAINTED.
A301	EXISTING PAINTED VERTICAL FIR SIDING. REMOVE EXISTING FINISH, PATCH WOOD AND SAND WHERE REQUIRED AND RE-PAINT.
A305	EXISTING PAINTED WOOD FRAME WINDOWS. SASH - TEMPORARILY REMOVE FROM FRAME, REMOVE EXISTING PAINT AND PUTTY, PATCH WOOD AND SAND WHERE REQUIRED, RE-PUTTY AND REPAINT. FRAME - REMOVE EXISTING FINISH, PATCH WOOD AND SAND WHERE REQUIRED AND RE-PAINT.
A306	EXISTING PAINTED WOOD FRAME DOOR. REMOVE EXISTING FINISH, PATCH WOOD AND SAND WHERE REQUIRED AND RE-PAINT.
A309	EXISTING PAINTED WOOD FASCIA, SOFFIT AND RAFTERS. REMOVE EXISTING FINISH, PATCH WOOD AND SAND WHERE REQUIRED AND RE-PAINT.
A316	EXISTING PAINTED WOOD CORNER FRAM. REMOVE EXISTING FINISH, PATCH WOOD AND SAND WHERE REQUIRED AND RE-PAINT.
A318	EXISTING GALVANIZED STEEL RAIN WATER LEADER. TEMPORARILY REMOVE, RE-PAINT AND RE-INSTALL.
A323	EXISTING PAINTED TRIM BOARD. REMOVE EXISTING FINISH, PATCH WOOD AND SAND WHERE REQUIRED AND RE-PAINT.
A324	EXISTING METAL GUTTER. TEMPORARILY REMOVE, RE-PAINT AND RE-INSTALL.
A339	EXISTING PAINTED WOOD FASCIA. REMOVE EXISTING FASCIA, INSTALL NEW FASCIA AND PAINT. REMOVE EXISTING FINISH OF WOOD SOFFIT AND RAFTERS AND RE-PAINT.
A340	EXISTING PAINTED WOOD LOUVRES. TEMPORARILY REMOVE FROM FRAME, REMOVE EXISTING FINISH, PATCH WOOD AND SAND WHERE REQUIRED, RE-PAINT AND RE-INSTALL.
A341	EXISTING WOOD GUTTER. CLEAN AND REPAIR. REMOVE EXISTING MEMBRANE, PATCH WHERE REQUIRED AND INSTALL NEW PMMA MEMBRANE.

4		
3		
2	Issued for Addendum #1	2013/09/18
1	Issued for Tender (Rev 1)	2013/07/30
0	Issued for Tender	2013/06
Revision / Revision	Description / Description	Date / Date

Client / cli : **PARKS CANADA
WESTERN REGION
STEVESTON, B.C. NATIONAL HISTORIC
SITE**

Project title / Titre du projet : **GULF OF GEORGIA CANNERY
BUILDING ENVELOPE REPAIR**

12138 Fourth Ave Richmond B.C.

Consultant Approval Box Only

Designed by / Concept par : **PMB/AB**

Drawn by / Dessiné par : **JYZ/RW**

PM/GSC: Project Manager / Administrateur de Projets: **TPSGC**

PM/GSC: Regional Manager, Architectural and Engineering Services / Gestionnaire régionale, Services d'architecture et de génie: **TPSGC**

PHILIP FUNG

Drawing title / Titre du dessin : **SITE PLAN**

Project no. / no. du projet : **R.060702.001**

Sheet / Feuille : **BE1.0**

Revision no. / La : **1**

KEYNOTES	
NUMBER	DESCRIPTION
A300	EXISTING PAINTED HORIZONTAL FIR SIDING. REMOVE EXISTING FINISH, PATCH WOOD AND SAND WHERE REQUIRED AND RE-PAINT. WHERE EXISTING SUBSTRATE IS NOT ACCEPTABLE FOR REPAINTING, INSTALL NEW DOUGLAS FIR SIDING, NO. 2 OR BETTER OF MATCHING PROFILE AND PAINTED.
A301	EXISTING PAINTED VERTICAL FIR SIDING. REMOVE EXISTING FINISH, PATCH WOOD AND SAND WHERE REQUIRED AND RE-PAINT.
A305	EXISTING PAINTED WOOD FRAME WINDOWS. SASH - TEMPORARILY REMOVE FROM FRAME, REMOVE EXISTING PAINT AND PUTTY, PATCH WOOD AND SAND WHERE REQUIRED, RE-PUTTY AND REPAINT. FRAME - REMOVE EXISTING FINISH, PATCH WOOD AND SAND WHERE REQUIRED AND RE-PAINT.
A306	EXISTING PAINTED WOOD FRAME DOOR. REMOVE EXISTING FINISH, PATCH WOOD AND SAND WHERE REQUIRED AND RE-PAINT.
A309	EXISTING PAINTED WOOD FASCIA, SOFFIT AND RAFTERS . REMOVE EXISTING FINISH, PATCH WOOD AND SAND WHERE REQUIRED AND RE-PAINT.
A316	EXISTING PAINTED WOOD CORNER TRIM. REMOVE EXISTING FINISH, PATCH WOOD AND SAND WHERE REQUIRED AND RE-PAINT.
A318	EXISTING GALVANIZED STEEL RAIN WATER LEADER. TEMPORARILY REMOVE, RE-PAINT AND RE-INSTALL.
A323	EXISTING PAINTED TRIM BOARD. REMOVE EXISTING FINISH, PATCH WOOD AND SAND WHERE REQUIRED AND RE-PAINT.
A324	EXISTING METAL GUTTER. TEMPORARILY REMOVE, RE-PAINT AND RE-INSTALL.
A339	EXISTING PAINTED WOOD FASCIA. REMOVE EXISTING FASCIA, INSTALL NEW FASCIA AND PAINT . REMOVE EXISTING FINISH OF WOOD SOFFIT AND RAFTERS AND RE-PAINT.
A340	EXISTING PAINTED WOOD LOUVRES. TEMPORARILY REMOVE FROM FRAME, REMOVE FINISH, PATCH WOOD AND SAND WHERE REQUIRED, RE-PAINT AND RE-INSTALL.
A341	EXISTING WOOD GUTTER CLEANING. REMOVE EXISTING MEMBRANE, PATCH WHERE REQUIRED AND INSTALL NEW PMMA MEMBRANE.

4		
3		
2	Issued for Addendum #1	2013/09/18
1	Issued for Tender (Rev 1)	2013/07/30
0	Issued for Tender	2013/06
Revision / Revision	Description / Description	Date / Date

Client / cli : **PARKS CANADA
WESTERN REGION
STEVESTON, B.C. NATIONAL HISTORIC
SITE**

Project title / Titre du projet : **GULF OF GEORGIA CANNERY
BUILDING ENVELOPE REPAIR**

12138 Fourth Ave Richmond B.C.

Consultant Approval Box Only

Designed by / Concept par : **PMB/AB**

Drawn by / Dessiné par : **JYZ/RW**

PM/GSC: Project Manager / Administrateur de Projets: **TPSGC**

PM/GSC: Regional Manager, Architectural and Engineering Services / Gestionnaire régionale, Services d'architecture et de génie: **TPSGC**

PHILIP FUNG

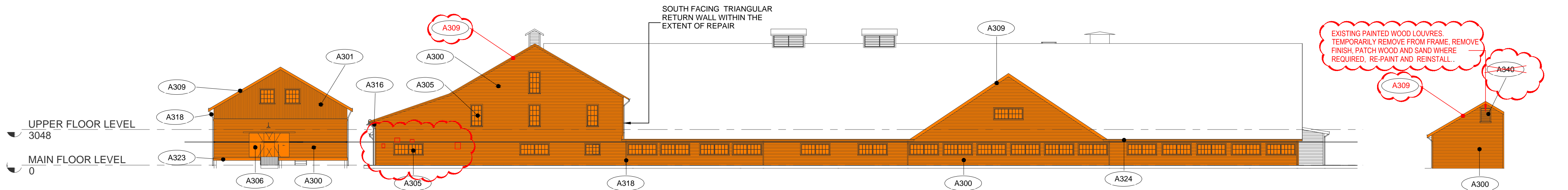
Drawing title / Titre du dessin : **ELEVATIONS**

Project no. / no. du Projet : **R.060702.001**

Sheet / Feuille : **BE2.0**

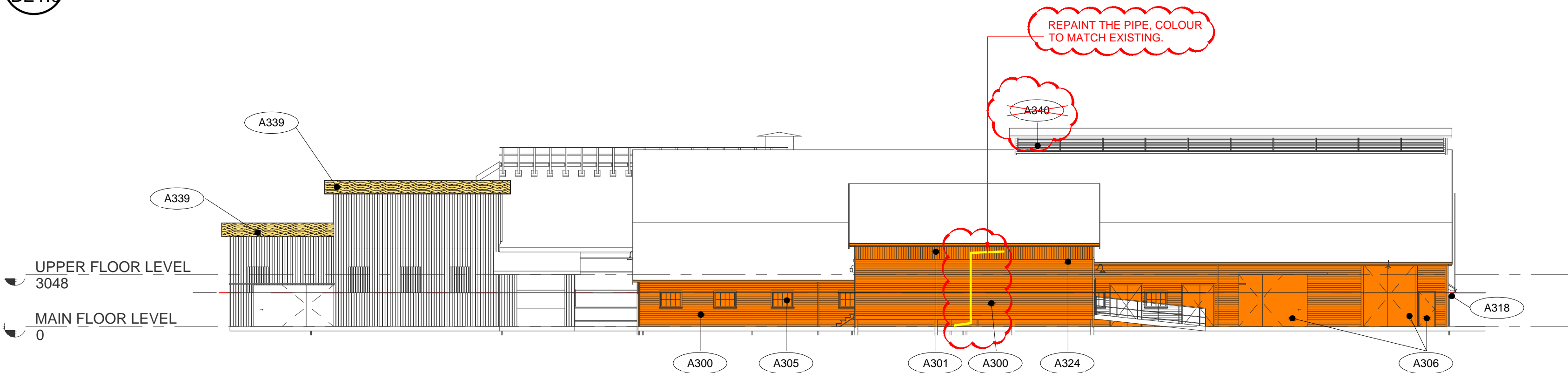
Revision no. /

La



1 WEST
BE1.0 1:200

5 WEST ELEVATION
@ GRIDLINE E
BE1.0 1:200



2 NORTH
BE1.0 1:200



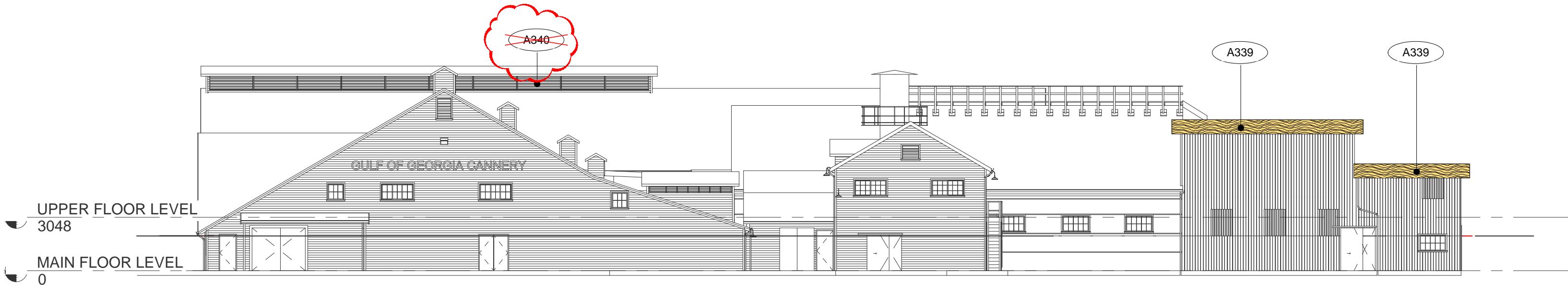
PHOTOGRAPH OF NORTH WEST
CORNER OF BOILER HOUSE
N.T.S.

NOTE: SMALL WOOD BOXES TO
BE REPAIRED AND REPAINTED.

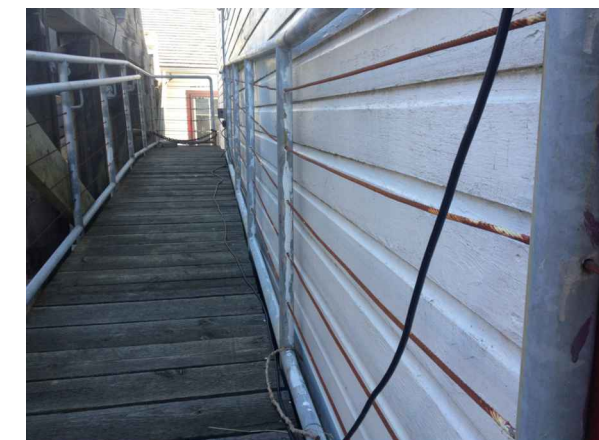


PHOTOGRAPH OF EAST ELEVATION
OF OIL DRUM STOR.
N.T.S.

NOTE: ALL SIGNAGE WITHIN SCOPE
OF WORK TO BE REMOVED,
STORED AND RE-INSTALLED BY
CONTRACTOR AFTER PAINTING.

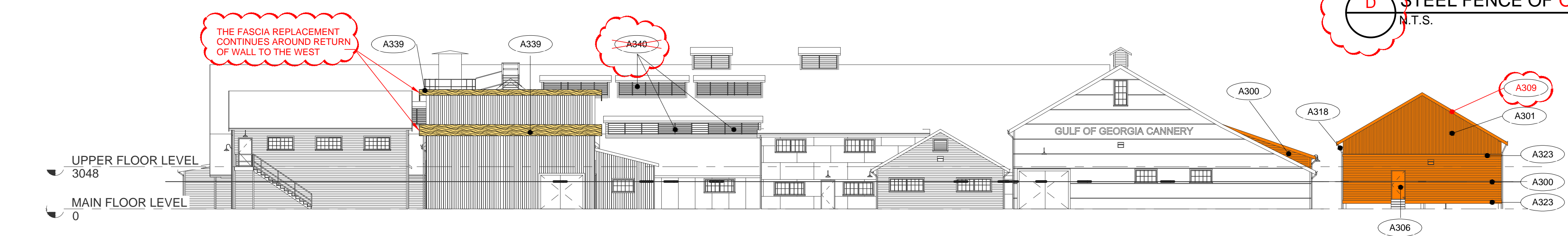


3 SOUTH
BE1.0 1:200



PHOTOGRAPH OF GALVANIZED
STEEL FENCE OF OIL DRUM STOR.
N.T.S.

NOTE: GALVANIZED STEEL FENCE
AGAINST WOOD WALL TO BE PAINTED.



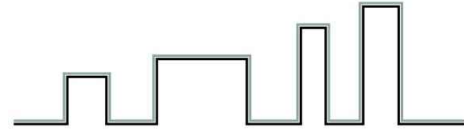
4 EAST
BE1.0 1:200

LEGEND:

- ORANGE SHADE: DENOTES EXTENT OF REPAIR
SEE BE1.0 SUMMARY OF REPAIR FOR REFERENCE
- WAVE PATTERN: DENOTES WOOD FASCIA REPLACEMENT



300 - 7337 137 Street, Surrey, BC V3W 1A4
T: 604 594 4787
E: office@boldwing-continuum.com



BUSQUE ENGINEERING LTD.

Building Envelope and Roofing Consultants

#123 - 11121 Horseshoe Way
Richmond, BC V7A 5G7
T: (604) 277-7787
E: Pierre@busqueengineering.com

KEYNOTES	
NUMBER	DESCRIPTION
A300	EXISTING PAINTED HORIZONTAL FIR SIDING. REMOVE EXISTING FINISH. PATCH WOOD AND SAND WHERE REQUIRED AND RE-PAINT. WHERE EXISTING SUBSTRATE IS NOT ACCEPTABLE FOR REPAINTING, INSTALL NEW DOUGLAS FIR SIDING, NO.2 OR BETTER OF MATCHING PROFILE AND PAINTED.
A301	EXISTING PAINTED VERTICAL FIR SIDING. REMOVE EXISTING FINISH. PATCH WOOD AND SAND WHERE REQUIRED AND RE-PAINT.
A305	EXISTING PAINTED WOOD FRAME WINDOWS. SASH - TEMPORARILY REMOVE FROM FRAME. REMOVE EXISTING PAINT AND PUTTY, PATCH WOOD AND SAND WHERE REQUIRED. RE-PUTTY AND REPAINT. FRAME - REMOVE EXISTING FINISH. PATCH WOOD AND SAND WHERE REQUIRED AND RE-PAINT.
A306	EXISTING PAINTED WOOD FRAME DOOR. REMOVE EXISTING FINISH. PATCH WOOD AND SAND WHERE REQUIRED AND RE-PAINT.
A309	EXISTING PAINTED WOOD FASCIA, SOFFIT AND RAFTERS. REMOVE EXISTING FINISH, PATCH WOOD AND SAND WHERE REQUIRED AND RE-PAINT.
A316	EXISTING PAINTED WOOD CORNER TRIM. REMOVE EXISTING FINISH. PATCH WOOD AND SAND WHERE REQUIRED AND RE-PAINT.
A318	EXISTING GALVANIZED STEEL RAIN WATER LEADER. TEMPORARILY REMOVE, RE-PAINT AND RE-INSTALL.
A323	EXISTING PAINTED TRIM BOARD. REMOVE EXISTING FINISH. PATCH WOOD AND SAND WHERE REQUIRED AND RE-PAINT.
A324	EXISTING METAL GUTTER. TEMPORARILY REMOVE, RE-PAINT AND RE-INSTALL.
A339	EXISTING PAINTED WOOD FASCIA. REMOVE EXISTING FASCIA. INSTALL NEW FASCIA AND PAINT. REMOVE EXISTING FINISH OF WOOD SOFFIT AND RAFTERS AND RE-PAINT.
A340	EXISTING PAINTED WOOD LOUVRES. TEMPORARILY REMOVE FROM FRAME. REMOVE FINISH. PATCH WOOD AND SAND WHERE REQUIRED. RE-PAINT AND RE-INSTALL.
A341	EXISTING WOOD GUTTER. CLEAN AND REMOVE EXISTING MEMBRANE. PATCH WHERE REQUIRED AND INSTALL NEW PMMA MEMBRANE.

4		
3		
2	Issued for Issued for Addendum #1	2013/09/18
1	Issued for Tender (Rev 1)	2013/07/30
0	Issued for Tender	2013/06
Revision / Revision	Description / Description	Date / Date

Client / cli : PARKS CANADA
WESTERN REGION
STEVESTON, B.C. NATIONAL HISTORIC SITE

Project title / Titre du projet : GULF OF GEORGIA CANNERY
BUILDING ENVELOPE REPAIR

12138 Fourth Ave Richmond B.C.

Consultant Approval Box Only

Designed by / Concept par : PMB/AB

Drawn by / Dessiné par : JYZ/RW

PMGSC: Project Manager / Administrateur de Projets: TPSSC

TOM DUNPHY

PMGSC: Regional Manager, Architectural and Engineering Services / Gestionnaire régionale, Services d'architecture et de génie, TPSSC

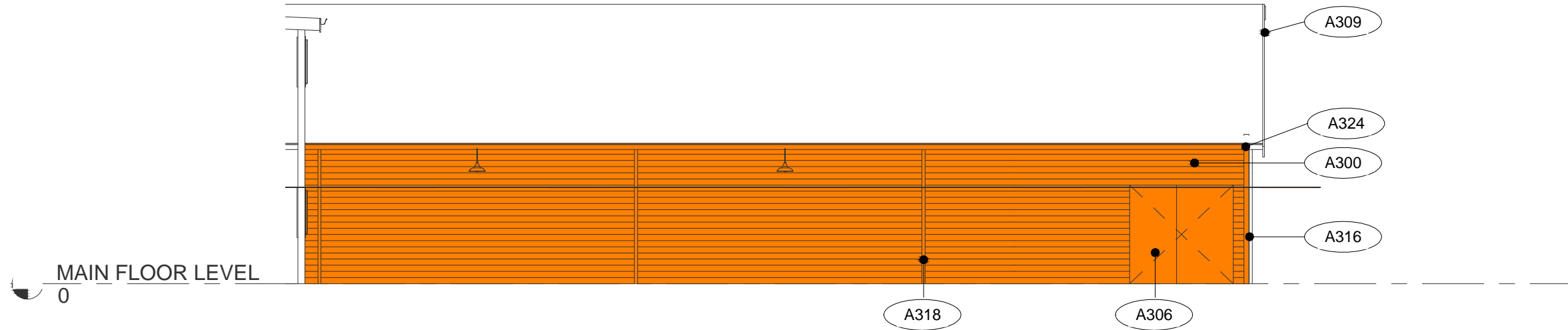
PHILIP FUNG

Drawing title / Titre du dessin : ELEVATIONS

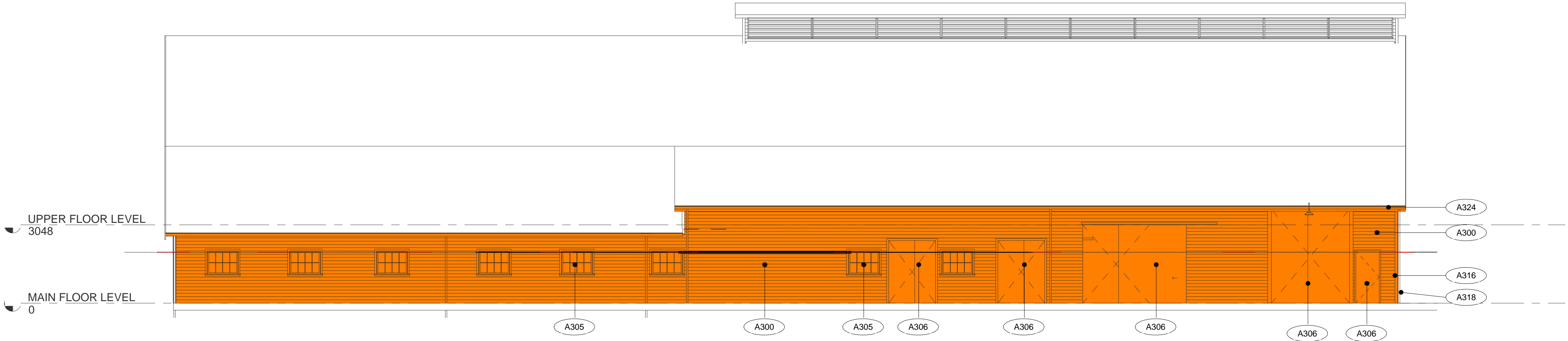
Project no. / no. du Projet : R.060702.001

Sheet / Feuille : BE2.1

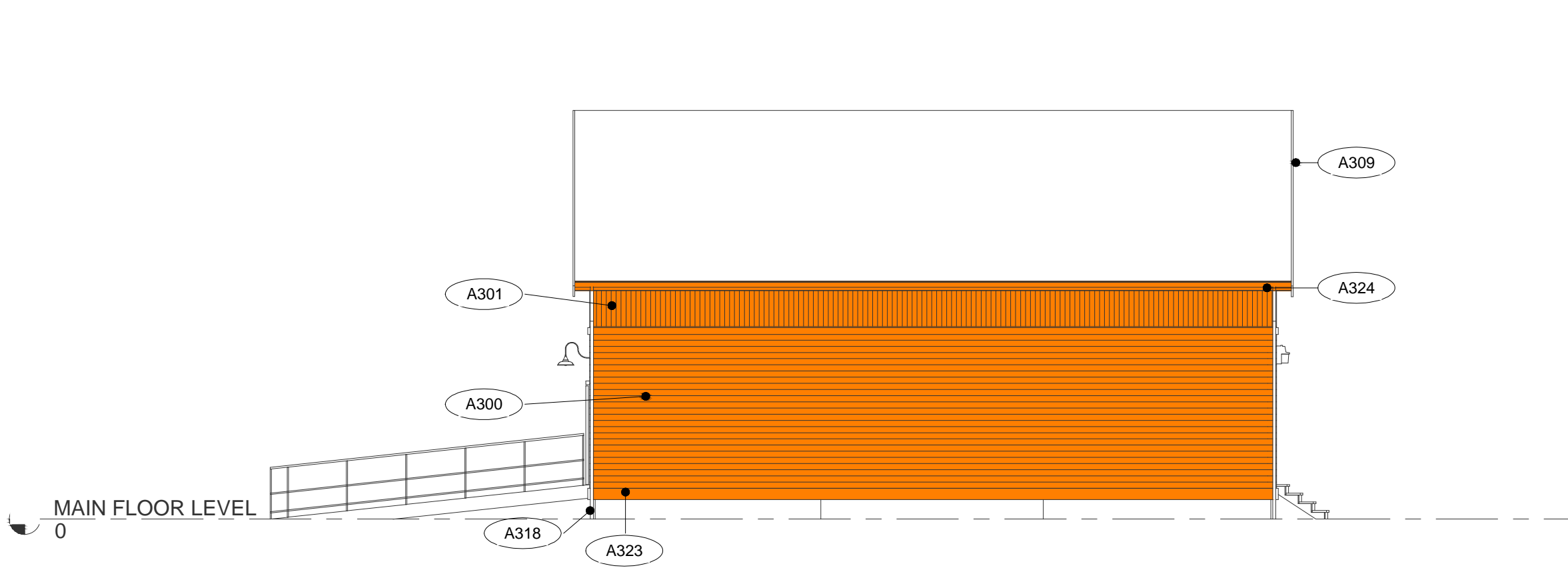
Revision no. / La : 1



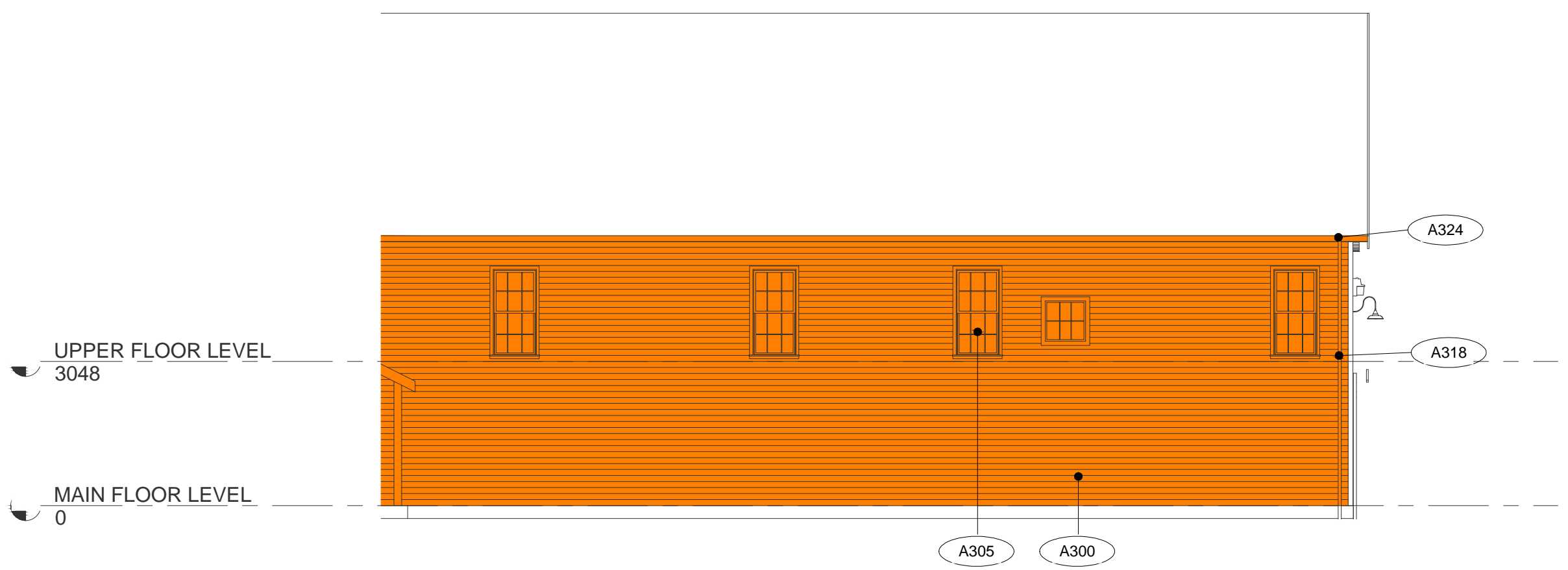
1 SOUTH ELEVATION @ GRIDLINE 6
BE1.0 1:100



2 NORTH ELEVATION @ GRIDLINE 1
BE1.0 1:100



3 SOUTH ELEVATION @ GRIDLINE 1
BE1.0 1:100

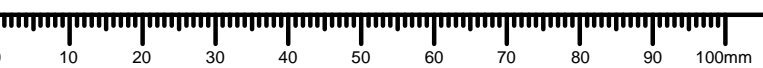


4 NORTH ELEVATION @ GRIDLINE 4
BE1.0 1:100

LEGEND:

- Denotes extent of repair
See BE1.0 SUMMARY OF REPAIR FOR REFERENCE
- Denotes wood fascia replacement

SHOP DRAWINGS: Prepare and submit to Boldwing Continuum Architects Inc. one electronic copy of all required shop drawings with supporting documents and two samples of materials where specified WITHOUT EXCEPTION. Shop drawings not reviewed and stamped by Contractor, verifying field measurements and compliance with contract documents will be REJECTED. Shop drawings to show construction details of all architectural elements; general arrangements, thicknesses, finishes, location of all services, typical and special installation conditions, material being supplied, and all connections, attachments, anchorages and locations of exposed fasteners as applicable. Shop drawings to incorporate applicable key plan, plans, elevations, sections, and details for all work submitted. No materials to be ordered and no work to be fabricated shall be undertaken until shop drawings and other related submittals been reviewed.



KEYNOTES	
NUMBER	DESCRIPTION
A300	EXISTING PAINTED HORIZONTAL FIR SIDING. REMOVE EXISTING FINISH, PATCH WOOD AND SAND WHERE REQUIRED AND RE-PAINT. WHERE EXISTING SUBSTRATE IS NOT ACCEPTABLE FOR REPAINTING, INSTALL NEW DOUGLAS FIR SIDING, NO.2 OR BETTER OF MATCHING PROFILE AND PAINTED.
A301	EXISTING PAINTED VERTICAL FIR SIDING. REMOVE EXISTING FINISH, PATCH WOOD AND SAND WHERE REQUIRED AND RE-PAINT.
A305	EXISTING PAINTED WOOD FRAME WINDOWS. SASH - TEMPORARILY REMOVE FROM FRAME, REMOVE EXISTING PAINT AND PUTTY, PATCH WOOD AND SAND WHERE REQUIRED, RE-PUTTY AND REPAINT. FRAME - REMOVE EXISTING FINISH, PATCH WOOD AND SAND WHERE REQUIRED AND RE-PAINT.
A306	EXISTING PAINTED WOOD FRAME DOOR. REMOVE EXISTING FINISH, PATCH WOOD AND SAND WHERE REQUIRED AND RE-PAINT.
A309	EXISTING PAINTED WOOD FASCIA, SOFFIT AND RAFTERS . REMOVE EXISTING FINISH, PATCH WOOD AND SAND WHERE REQUIRED AND RE-PAINT.
A316	EXISTING PAINTED WOOD CORNER TRIM. REMOVE EXISTING FINISH, PATCH WOOD AND SAND WHERE REQUIRED AND RE-PAINT.
A318	EXISTING GALVANIZED STEEL RAIN WATER LEADER. TEMPORARILY REMOVE, RE-PAINT AND RE-INSTALL.
A323	EXISTING PAINTED TRIM BOARD. REMOVE EXISTING FINISH, PATCH WOOD AND SAND WHERE REQUIRED AND RE-PAINT.
A324	EXISTING METAL GUTTER. TEMPORARILY REMOVE, RE-PAINT AND RE-INSTALL.
A339	EXISTING PAINTED WOOD FASCIA. REMOVE EXISTING FASCIA, INSTALL NEW FASCIA AND PAINT. REMOVE EXISTING FINISH OF WOOD SOFFIT AND RAFTERS AND RE-PAINT.
A340	EXISTING PAINTED WOOD LOUVRES. TEMPORARILY REMOVE FROM FRAME, REMOVE FINISH, PATCH WOOD AND SAND WHERE REQUIRED, RE-PAINT AND RE-INSTALL.
A341	EXISTING WOOD GUTTER. CLEAN AND REMOVE EXISTING MEMBRANE. PATCH WHERE REQUIRED AND INSTALL NEW PMMA MEMBRANE.

4		
3		
2	Issued for Addendum #1	2013/09/18
1	Issued for Tender (Rev 1)	2013/07/30
0	Issued for Tender	2013/06
Revision / Revision	Description / Description	Date / Date

Client / cli : **PARKS CANADA
WESTERN REGION
STEVESTON, B.C. NATIONAL HISTORIC
SITE**

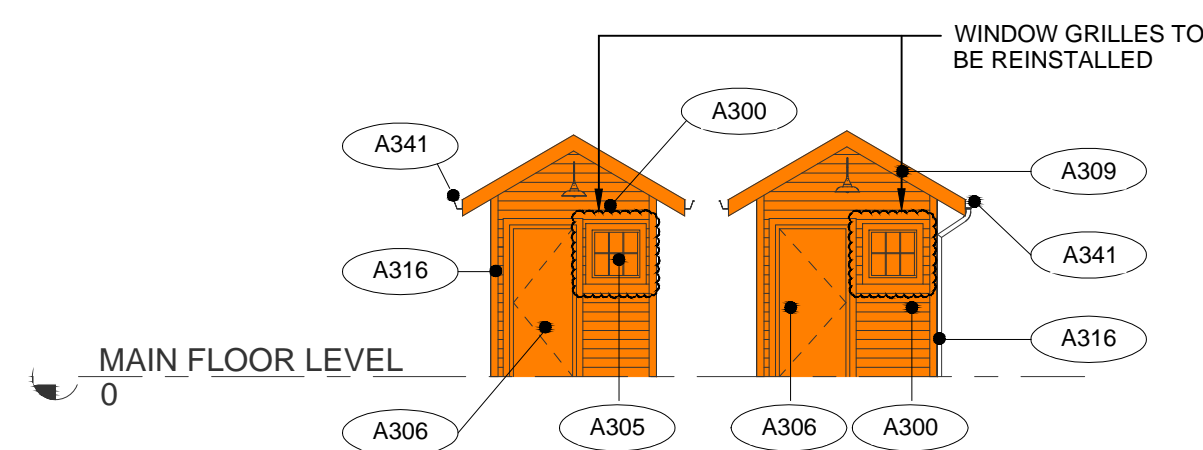
Project title / Titre du projet
**GULF OF GEORGIA CANNERY
BUILDING ENVELOPE REPAIR**

12138 Fourth Ave Richmond B.C.

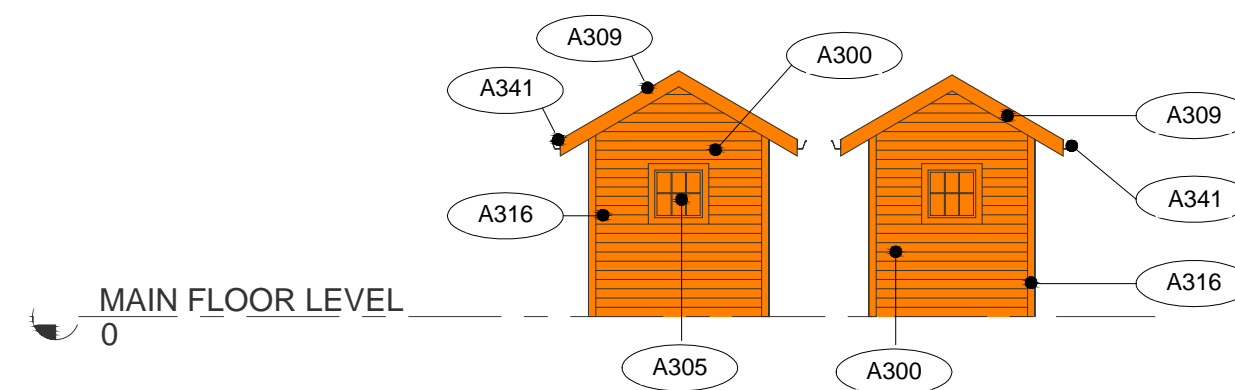
Consultant Approval Box Only	
Designed by / Concept par PMB/AB	
Drawn by / Dessiné par JYZ/RW	
PM/GSC: Project Manager / Administrateur de Projets TP/GSC TOM DUNPHY	
PM/GSC: Regional Manager, Architectural and Engineering Services / Gestionnaire régionale, Services d'architecture et de génie, TP/GSC PHILIP FUNG	

Drawing title / Titre du dessin
ELEVATIONS

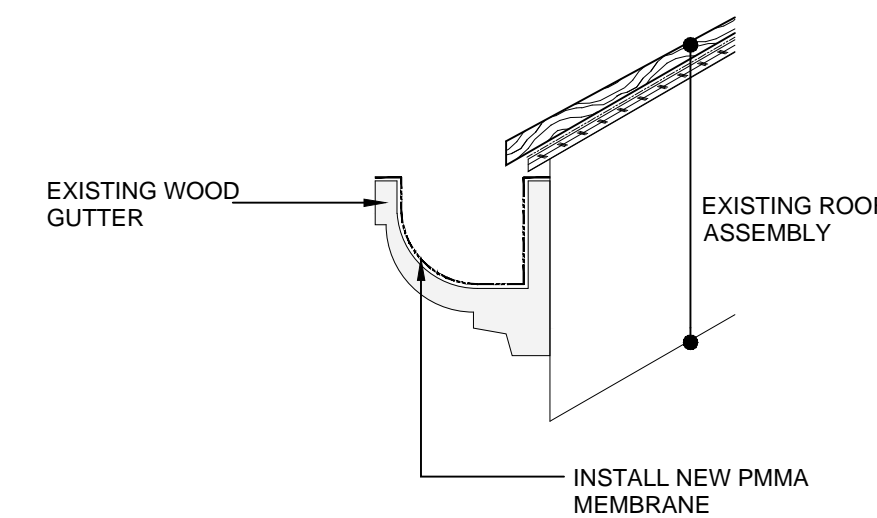
Project no. / no. du Projet	Sheet / Feuille	Revision no. / La . . .
R.060702.001	BE2.2	



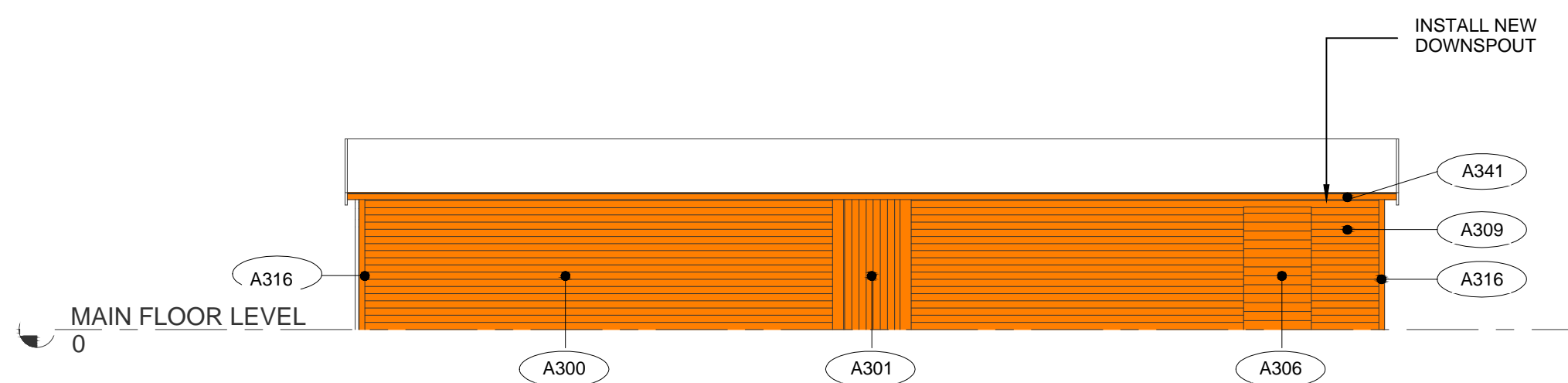
1 EAST ELEVATION
BE1.0 1 : 100 (@LEAD FOUNDRY AND WATCH SHED)



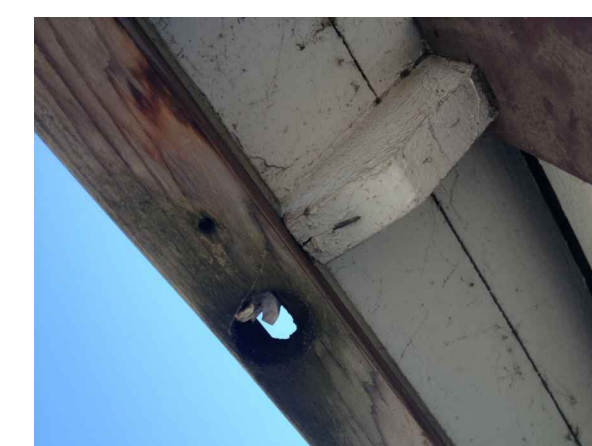
2 WEST ELEVATION
BE1.0 1 : 100 (@LEAD FOUNDRY AND WATCH SHED)



7 MEMBRANE @ WOOD GUTTER
N.T.S. (@LEAD FOUNDRY AND WATCH SHED)



3 NORTH ELEVATION
BE1.0 1 : 100 (@LEAD FOUNDRY)



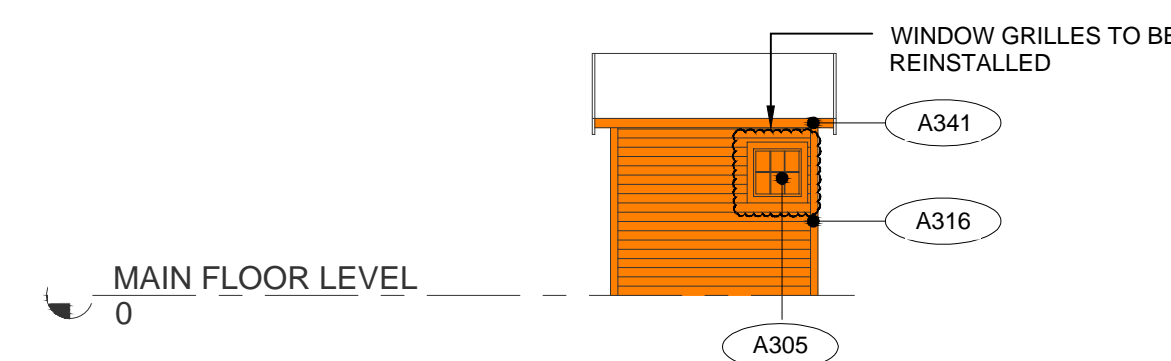
**E PHOTOGRAPH OF WOOD GUTTER @ NORTH
WEST CORNER OF LEAD FOUNDRY**
N.T.S.



4 SOUTH ELEVATION
BE1.0 1 : 100 (@LEAD FOUNDRY)



5 NORTH ELEVATION
BE1.0 1 : 100 (@WATCH SHED)



6 SOUTH ELEVATION
BE1.0 1 : 100 (@WATCH SHED)

LEGEND:

- DENOTES EXTENT OF REPAIR
SEE BE1.0 SUMMARY OF REPAIR FOR REFERENCE
- DENOTES WOOD FASCIA REPLACEMENT