

SMALL CRAFT HARBOURS
CENTRAL AND ARCTIC REGION



Riggs Engineering Ltd.
1240 Commissioners Rd. W., Suite 205
London, Ontario,
N6K 1C7
Tel: (519) 657-1040
Fax: (519) 657 8631
Website: www.riggsgengineering.com

- 1 Detail No.
2 drawing no. - where detail required refers to MA--
3 drawing no. - where detailed refers to MA--

Stamp:



NOTES:

REVISIONS:		DATE:
0	ISSUED FOR TENDER	JULY 29, 2013

SCALE:	CLASS:
AS NOTED	

PROJECT:

LIONS HEAD
SERVICE DOCK REPAIRS

DESCRIPTION:

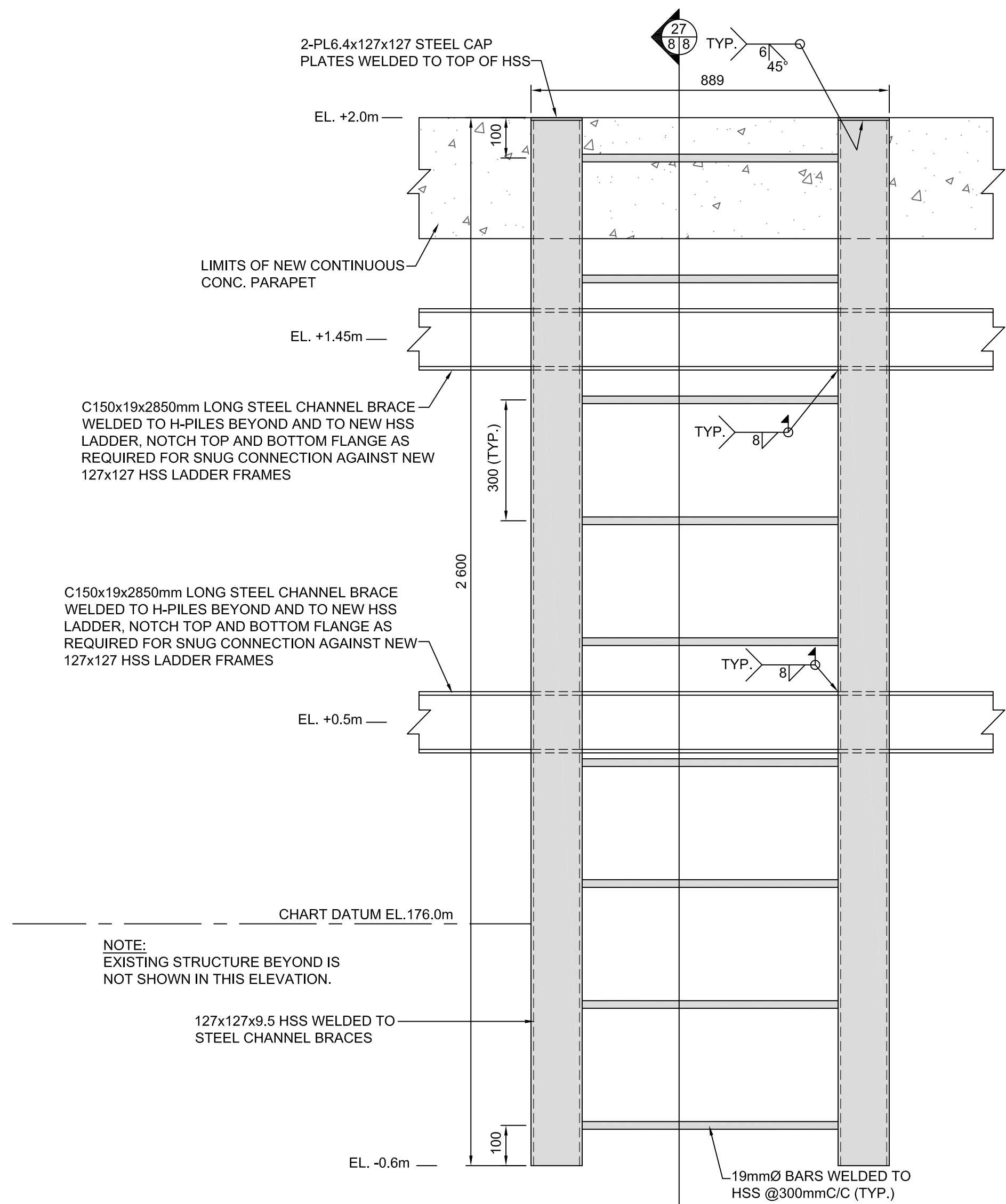
TYP. LADDER AND
FENDER DETAILS

DRAWN: A.M	APPROVED: B.R.
DATE: 2013-07-29	DATE: 2013-07-29

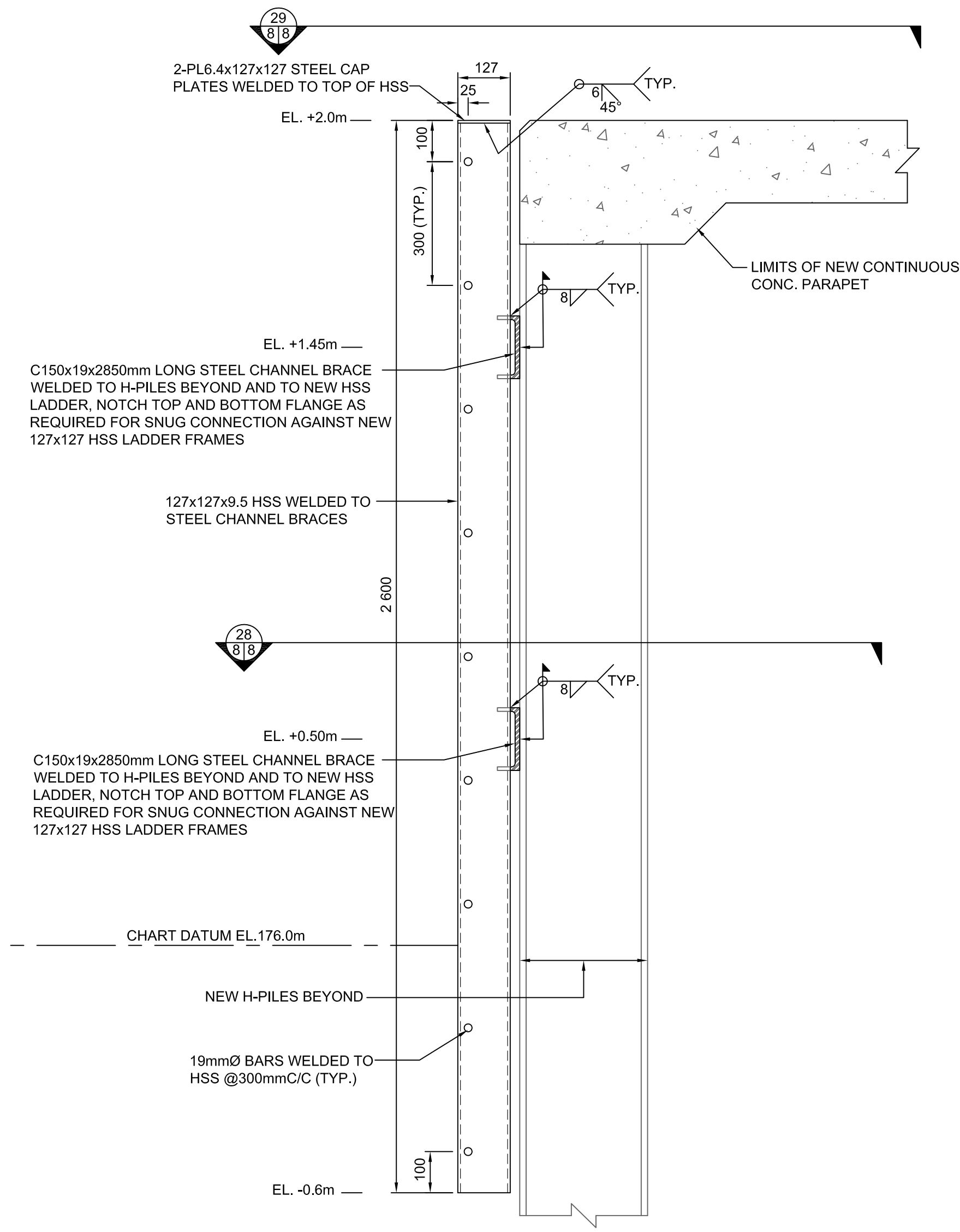
LOCATION:

LIONS HEAD
ONTARIO

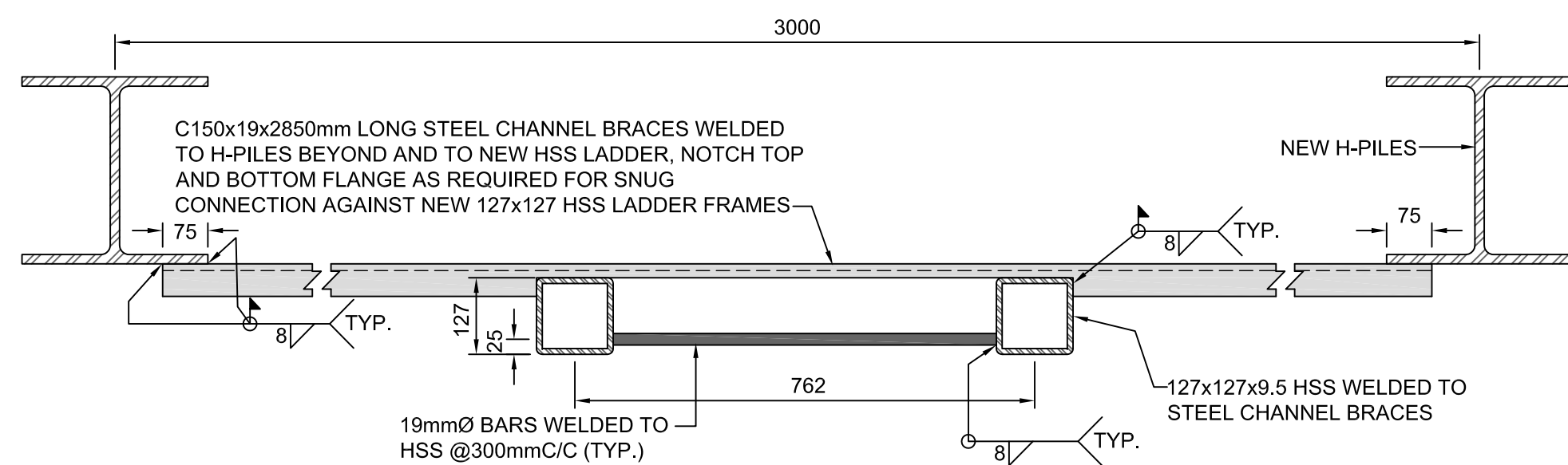
DRAWING NO.: MA-08	LOCATOR CODE: 720182
-----------------------	-------------------------



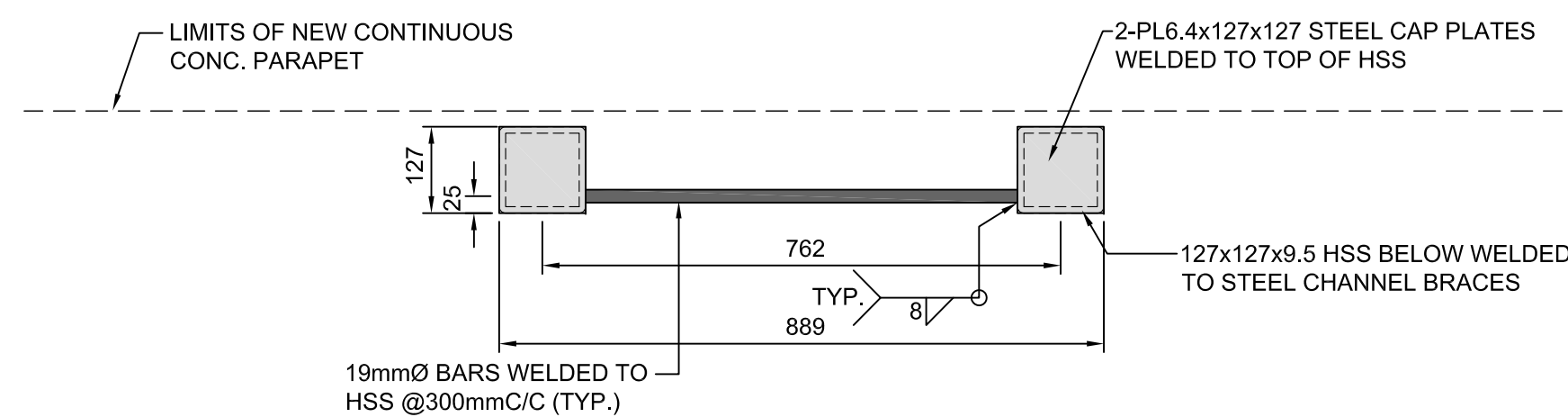
26
8/8
NEW LADDER ELEVATION
SCALE: 1:10



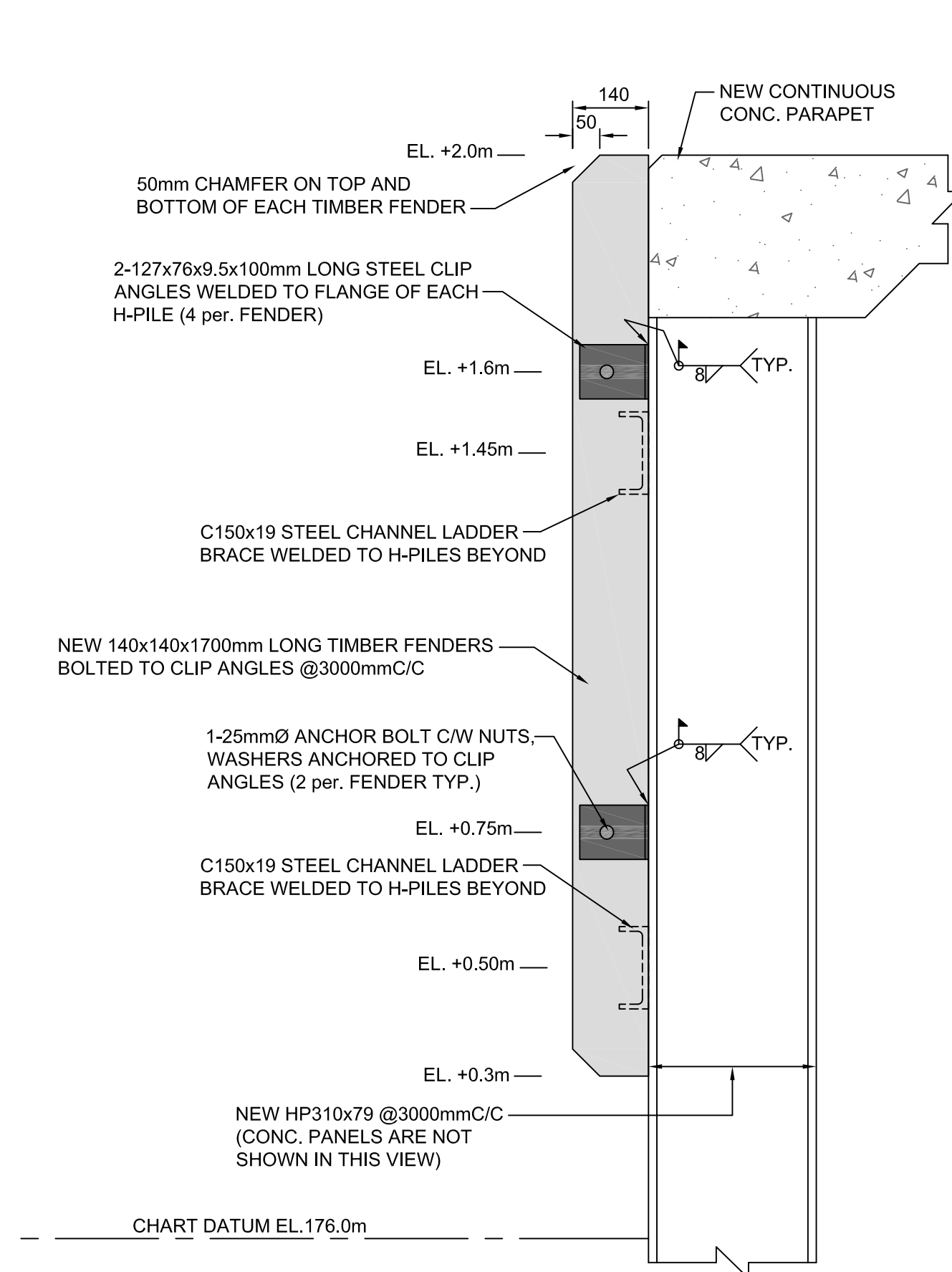
27
8/8
NEW LADDER TYP. SECTION
SCALE: 1:10



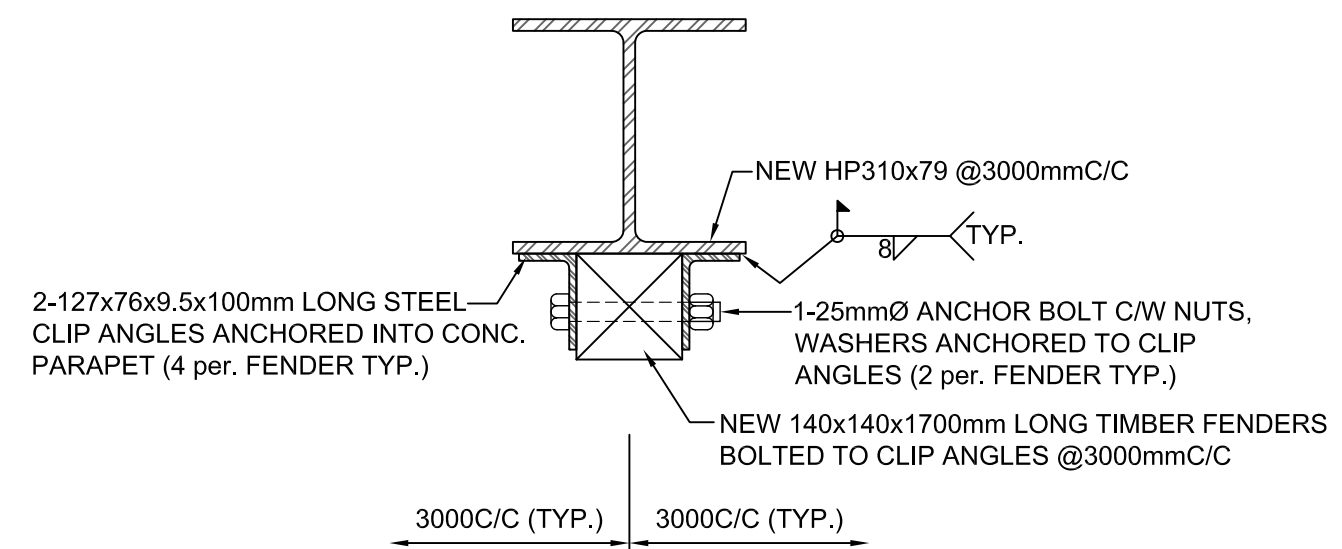
28
8/8
NEW LADDER SECTION AT LADDER BRACES
SCALE: 1:10



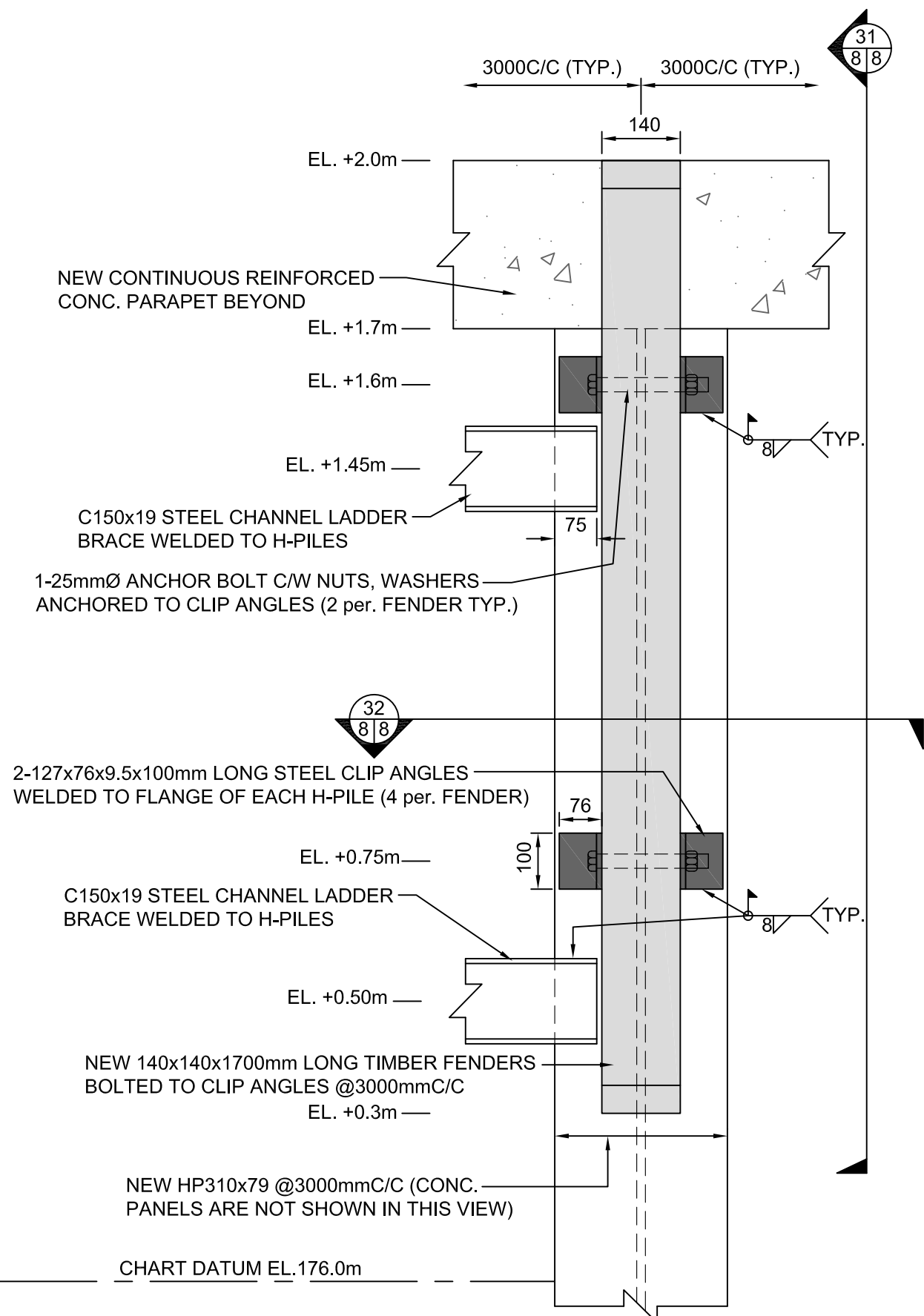
29
8/8
NEW LADDER SECTION AT PILE CAP
SCALE: 1:10



31
8/8
NEW FENDER TYP. SECTION
SCALE: 1:10



32
8/8
NEW FENDER CONNECTION DETAIL
SCALE: 1:10



30
8/8
NEW FENDER ELEVATION
SCALE: 1:10