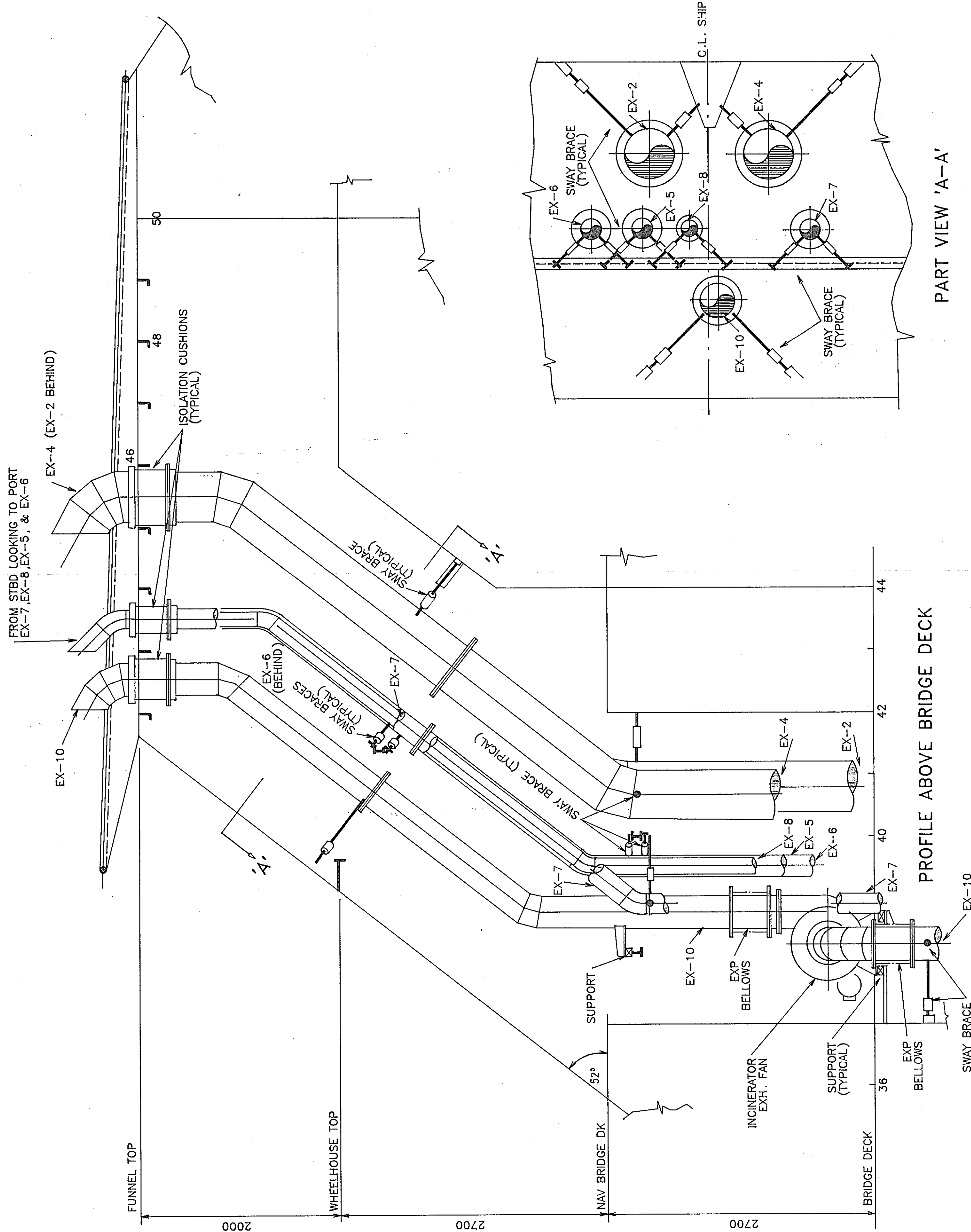


0 1 2 3 4 5 6 7 8 9 10



PART VIEW 'A-A'

PROFILE ABOVE BRIDGE DECK

SECTION I.W.O. MAIN ENGINES

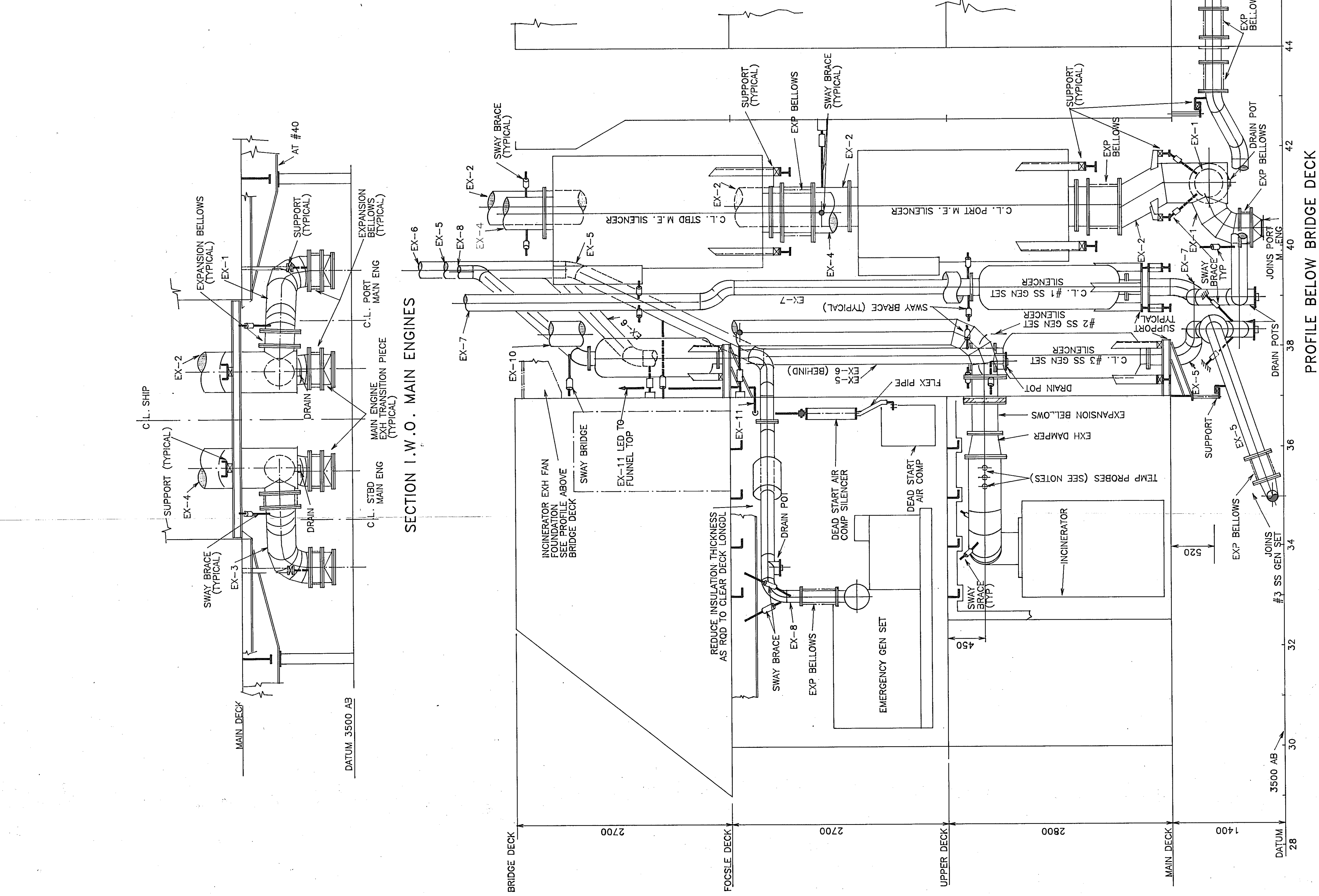
| MARK | DIA. | DESCRIPTION |
|-------|------|--------------------------------|
| EX-1 | 350 | PORT M.E. EXH AT ENG |
| EX-2 | 500 | PORT M.E. EXH UPTAKE |
| EX-3 | 350 | STBD M.E. EXH AT ENG |
| EX-4 | 500 | STBD M.E. EXH UPTAKE |
| EX-5 | 200 | #3 SS GEN SET UPTAKE |
| EX-6 | 200 | #2 SS GEN SET UPTAKE |
| EX-7 | 200 | #1 SS GEN SET UPTAKE |
| EX-8 | 150 | EMERGOT GEN SET UPTAKE |
| EX-9 | 410 | INCINERATOR EXH UPTAKE |
| EX-10 | 310 | INCINERATOR EXH UPTAKE |
| EX-11 | 36 | DEAD START AIR COMP EXH UPTAKE |

NOTES:-
-SWAY BRACES, SUPPORTS & CUSHIONS ARE SHOWN
-DIAGRAMMATICALLY ONLY. NUMBER & POSITIONS ARE
-ACCURATELY ILLUSTRATED FOR TYPE AND MODEL NUMBERS
-CONTROL LTD.
-EX-11 DEAD START AIR COMP EXH UPTAKE TERMINATES
-IN A 45° ELBOW AT FUNNEL TOP. THERMAL EXPANSION
-SHALL BE ABSORBED BY PIPE BENDS
-EXPANSION BELLOWS ARE POSITIONED TO ALLOW FOR
-THERMAL EXPANSION OF EXHAUST PIPES
-UPTAKES HAVE DRAINS COLLECTION POTS FITTED SEE
-DETAIL-SHEET #2
-ALL DRAINS ARE LED TO E.R. BILGES

LIST OF UPTAKES:-

| MARK | DIA. | DESCRIPTION |
|-------|------|--------------------------------|
| EX-1 | 350 | PORT M.E. EXH AT ENG |
| EX-2 | 500 | PORT M.E. EXH UPTAKE |
| EX-3 | 350 | STBD M.E. EXH AT ENG |
| EX-4 | 500 | STBD M.E. EXH UPTAKE |
| EX-5 | 200 | #3 SS GEN SET UPTAKE |
| EX-6 | 200 | #2 SS GEN SET UPTAKE |
| EX-7 | 200 | #1 SS GEN SET UPTAKE |
| EX-8 | 150 | EMERGOT GEN SET UPTAKE |
| EX-9 | 410 | INCINERATOR EXH UPTAKE |
| EX-10 | 310 | INCINERATOR EXH UPTAKE |
| EX-11 | 36 | DEAD START AIR COMP EXH UPTAKE |

NOTES:-
-SWAY BRACES, SUPPORTS & CUSHIONS ARE SHOWN
-DIAGRAMMATICALLY ONLY. NUMBER & POSITIONS ARE
-ACCURATELY ILLUSTRATED FOR TYPE AND MODEL NUMBERS
-CONTROL LTD.
-EX-11 DEAD START AIR COMP EXH UPTAKE TERMINATES
-IN A 45° ELBOW AT FUNNEL TOP. THERMAL EXPANSION
-SHALL BE ABSORBED BY PIPE BENDS
-EXPANSION BELLOWS ARE POSITIONED TO ALLOW FOR
-THERMAL EXPANSION OF EXHAUST PIPES
-UPTAKES HAVE DRAINS COLLECTION POTS FITTED SEE
-DETAIL-SHEET #2
-ALL DRAINS ARE LED TO E.R. BILGES



PROFILE BELOW BRIDGE DECK

RivTow Industries Ltd.
West Coast Manly Shipyard Division

| | | | | |
|---|------------------------------------|---------|----------------------|------|
| 2050 E. KENT AVE. VANCOUVER, B.C. CANADA V5P 2T2 (604) 327-6311 | | | | |
| OWNER | GOVERNMENT OF CANADA | | | |
| | DEPARTMENT OF FISHERIES AND OCEANS | | | |
| VESSEL | LEONARD J. COWLEY | | | |
| TITLE EXHAUST SYSTEM PIPING | | | | |
| "AS FITTED" | | | | |
| C & W | DATE | BY | SCALE: 1:25 | REV. |
| DRAWN | MARCH 84 | D.MAINS | DRAWING NO. | |
| CHECKED | MARCH 84 | B.C.H. | | |
| APPROVED | MARCH 84 | W.C. | | |
| | | | 590-52 | 0 |
| | | | SHEET #1 OF 2 SHEETS | |

2050 E. KENT AVE. VANCOUVER, B.C. CANADA V6P 2T2 (604) 327-6311

590-52
DRAWING NO.
SHEET #1 OF 2 SHEETS

0

(Box 1)