

Issued or revised émis ou révisé		
01	ISSUED FOR TENDER	2013/08/30
00	ISSUED FOR TENDER	2013/06/11
0B	ISSUED FOR 99% REVIEW	2013/04/18
0A	ISSUED FOR REVIEW	2013/03/28
no.	description	date

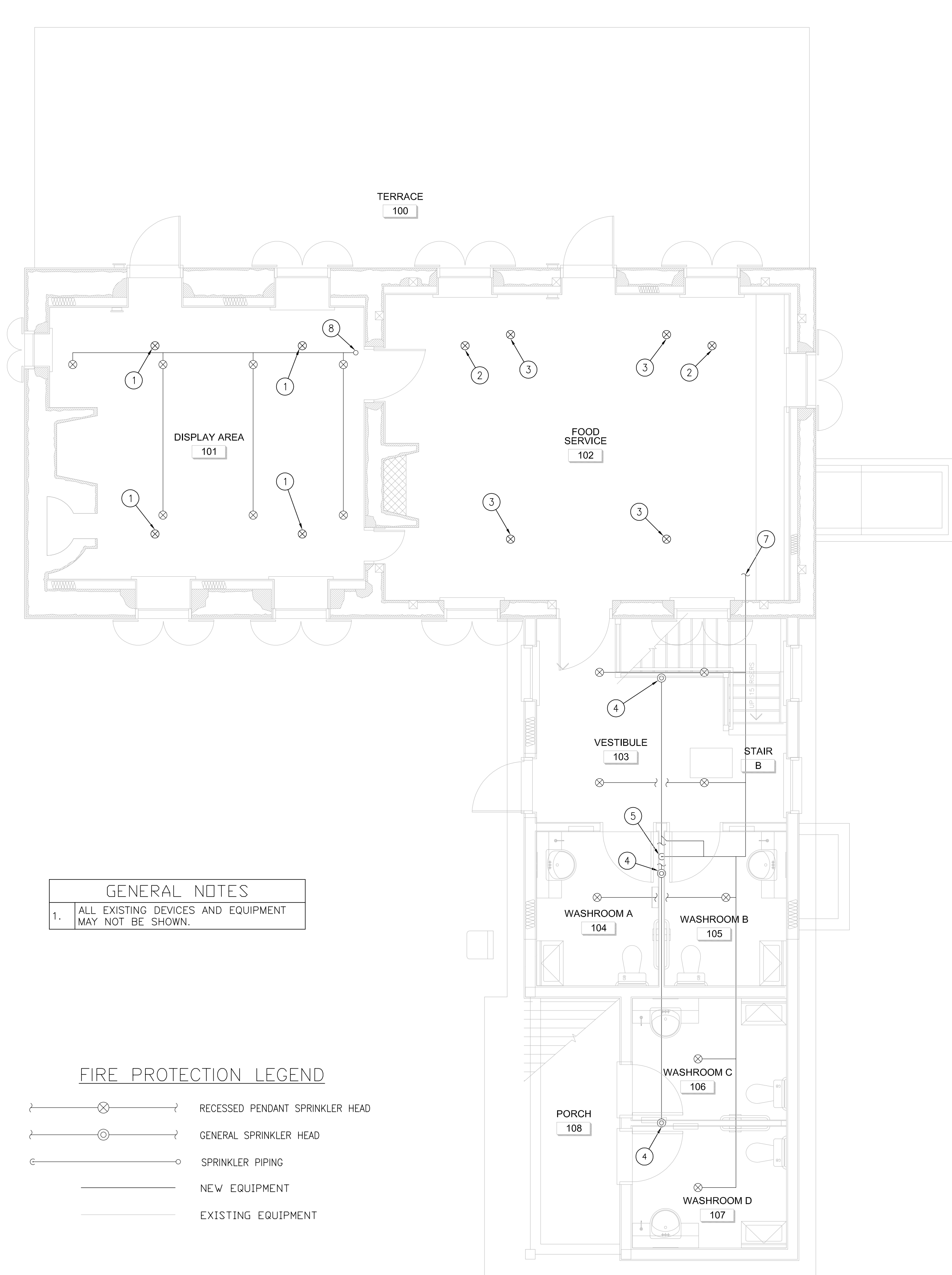
project
projet

**MAISON CHARRON
REHABILITATION**

drawing
dessin

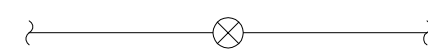
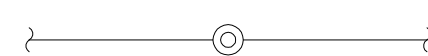



**FIRE PROTECTION
DEMOLITION & NEW**

approved by
approuvé par S. MAYNARD
designed by
conçu par C. MCGEE
drawn by
dessiné par C. MCGEE
date 2013/03/25 scale
échelle AS NOTED
NCC project no. sheet no.
no. du projet de la CCN no. de la feuille
DC-4080 **M-002**

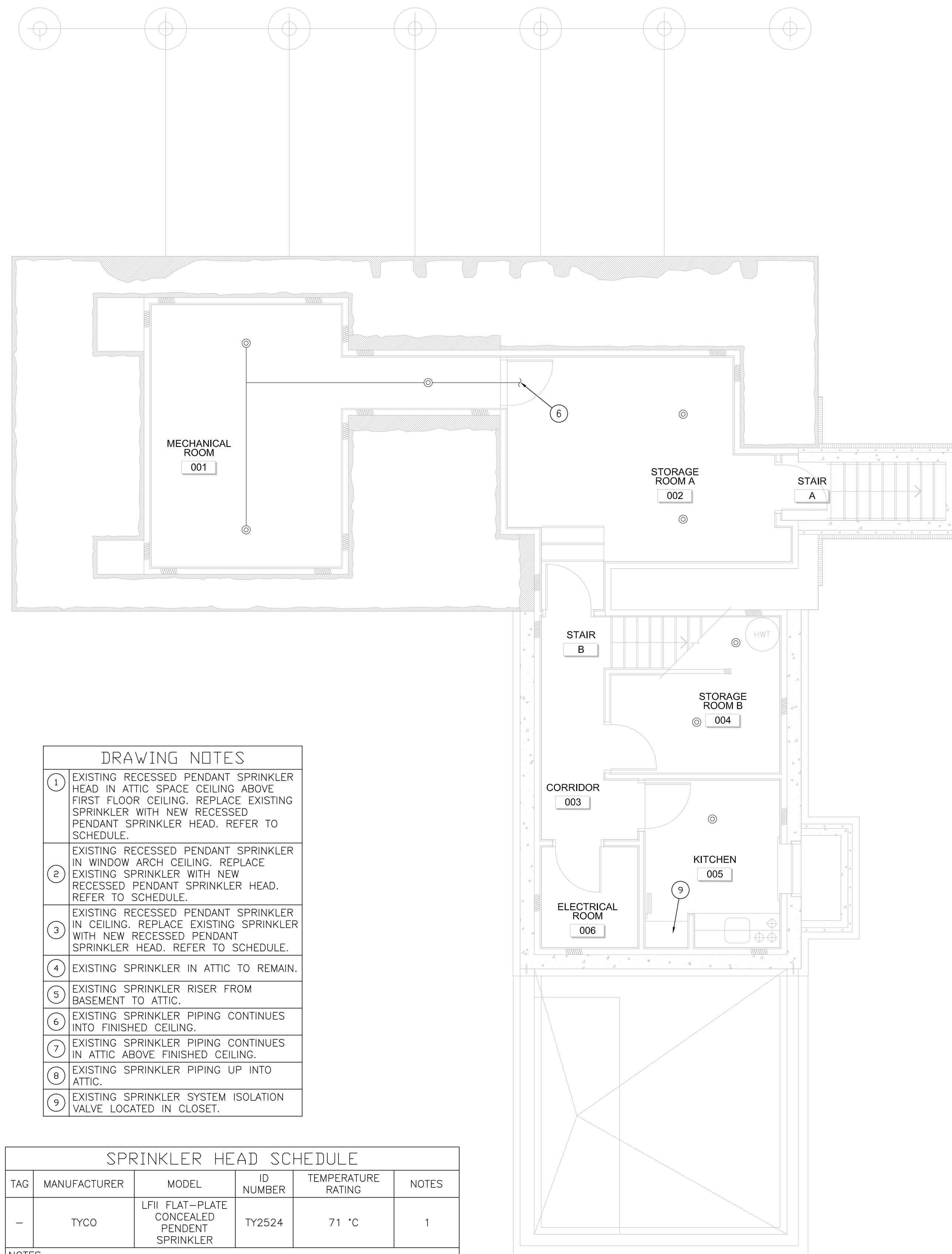


GENERAL NOTES	
1.	ALL EXISTING DEVICES AND EQUIPMENT MAY NOT BE SHOWN.

FIRE PROTECTION LEGEND

	RECESSED PENDANT SPRINKLER HEAD
	GENERAL SPRINKLER HEAD
	SPRINKLER PIPING
	NEW EQUIPMENT
	EXISTING EQUIPMENT

1
M002 MAIN FLOOR PLAN: FIRE PROTECTION
SCALE: 1:50



DRAWING NOTES	
①	EXISTING RECESSED PENDANT SPRINKLER HEAD IN ATTIC SPACE CEILING ABOVE FIRST FLOOR CEILING. REPLACE EXISTING SPRINKLER WITH NEW RECESSED PENDANT SPRINKLER HEAD. REFER TO SCHEDULE.
②	EXISTING RECESSED PENDANT SPRINKLER IN WINDOW ARCH CEILING. REPLACE EXISTING SPRINKLER WITH NEW RECESSED PENDANT SPRINKLER HEAD. REFER TO SCHEDULE.
③	EXISTING RECESSED PENDANT SPRINKLER IN CEILING. REPLACE EXISTING SPRINKLER WITH NEW RECESSED PENDANT SPRINKLER HEAD. REFER TO SCHEDULE.
④	EXISTING SPRINKLER IN ATTIC TO REMAIN.
⑤	EXISTING SPRINKLER RISER FROM BASEMENT TO ATTIC.
⑥	EXISTING SPRINKLER PIPING CONTINUES INTO FINISHED CEILING.
⑦	EXISTING SPRINKLER PIPING CONTINUES IN ATTIC ABOVE FINISHED CEILING.
⑧	EXISTING SPRINKLER PIPING UP INTO ATTIC.
⑨	EXISTING SPRINKLER SYSTEM ISOLATION VALVE LOCATED IN CLOSET.

SPRINKLER HEAD SCHEDULE					
TAG	MANUFACTURER	MODEL	ID NUMBER	TEMPERATURE RATING	NOTES
-	TYCO	LFII FLAT-PLATE CONCEALED PENDENT SPRINKLER	TY2524	71 °C	1
NOTES:					
1. INSTALL WITH OFF-WHITE COVER PLATE.					

2
M002 BASEMENT FLOOR PLAN: FIRE PROTECTION
SCALE: 1:50