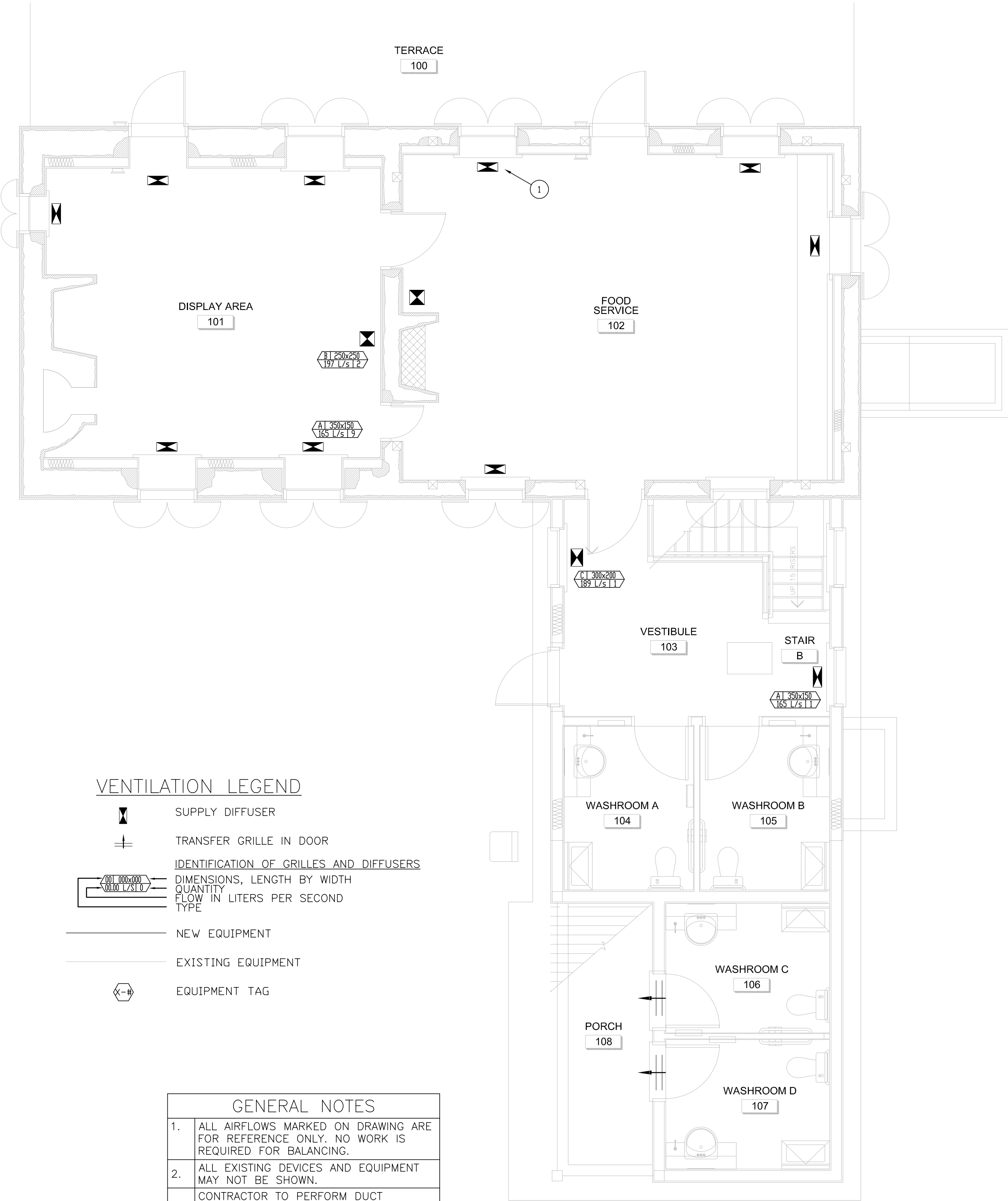
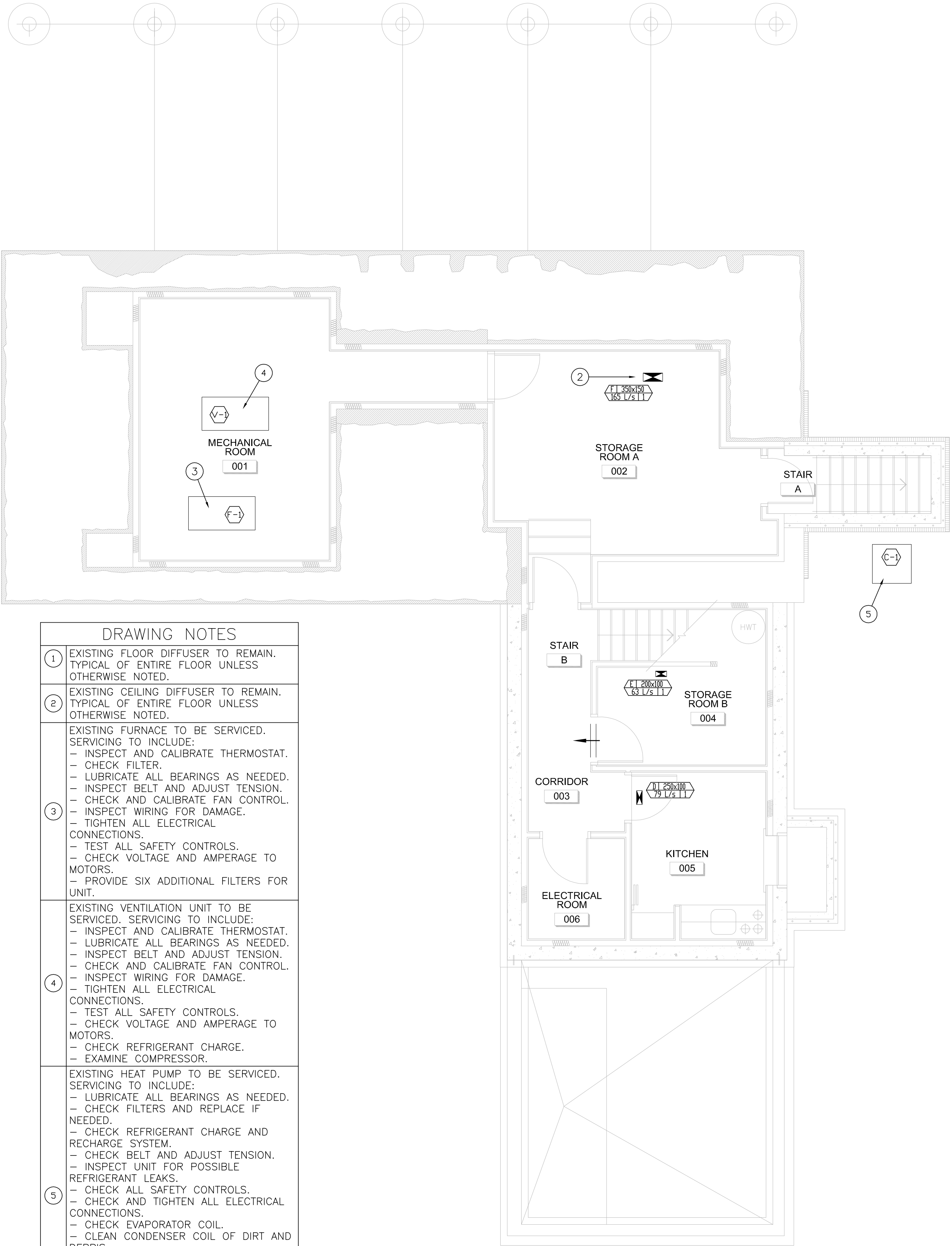


EXISTING EQUIPMENT SCHEDULE										
TAG	EQUIPMENT TYPE	MODEL NUMBER	SERIAL NUMBER	ELECTRICAL			HEATER CAPACITY (kW)	MOTOR HP (HP)	COMPRESSOR ELECTRICAL (V/PH/HZ)	NOTES
				VOLTAGE (V)	PHASE	HZ (HZ)				
F-1	FURNACE	N2AHD10A06A	MERS233533	208	1	60	11.3	1/3	—	1,2
V-1	VENTILATOR	DB 21 NH HB	MTD 856 859	230/208	1	60	—	1/12	230/1/60	1,3
C-1	HEAT PUMP	—	—	—	—	—	—	—	—	1,4
NOTES:										
1. INFORMATION IS FOR REFERENCE ONLY.										
2. FURNACE IS CONNECTED TO HEAT PUMP C-1 LOCATED OUTSIDE BUILDING.										
3. UNIT USES R22 REFRIGERANT.										
4. HEAT PUMP IS CONNECTED TO FURNACE F-1 LOCATED IN MECHANICAL ROOM.										



1 MAIN FLOOR PLAN: VENTILATION
M003 SCALE: 1:50



2 BASEMENT FLOOR PLAN: VENTILATION
M003 SCALE: 1:50

DRAWING NOTES	
1	EXISTING FLOOR DIFFUSER TO REMAIN. TYPICAL OF ENTIRE FLOOR UNLESS OTHERWISE NOTED.
2	EXISTING CEILING DIFFUSER TO REMAIN. TYPICAL OF ENTIRE FLOOR UNLESS OTHERWISE NOTED.
3	EXISTING FURNACE TO BE SERVICED. SERVICING TO INCLUDE: <ul style="list-style-type: none">— INSPECT AND CALIBRATE THERMOSTAT.— CHECK FILTER.— LUBRICATE ALL BEARINGS AS NEEDED.— INSPECT BELT AND ADJUST TENSION.— CHECK AND CALIBRATE FAN CONTROL.— INSPECT WIRING FOR DAMAGE.— TIGHTEN ALL ELECTRICAL CONNECTIONS.— TEST ALL SAFETY CONTROLS.— CHECK VOLTAGE AND AMPERAGE TO MOTORS.— PROVIDE SIX ADDITIONAL FILTERS FOR UNIT.
4	EXISTING VENTILATION UNIT TO BE SERVICED. SERVICING TO INCLUDE: <ul style="list-style-type: none">— INSPECT AND CALIBRATE THERMOSTAT.— LUBRICATE ALL BEARINGS AS NEEDED.— INSPECT BELT AND ADJUST TENSION.— CHECK AND CALIBRATE FAN CONTROL.— INSPECT WIRING FOR DAMAGE.— TIGHTEN ALL ELECTRICAL CONNECTIONS.— TEST ALL SAFETY CONTROLS.— CHECK VOLTAGE AND AMPERAGE TO MOTORS.— CHECK REFRIGERANT CHARGE.— EXAMINE COMPRESSOR.
5	EXISTING HEAT PUMP TO BE SERVICED. SERVICING TO INCLUDE: <ul style="list-style-type: none">— LUBRICATE ALL BEARINGS AS NEEDED.— CHECK FILTERS AND REPLACE IF NEEDED.— CHECK REFRIGERANT CHARGE AND RECHARGE SYSTEM.— CHECK BELT AND ADJUST TENSION.— INSPECT UNIT FOR POSSIBLE REFRIGERANT LEAKS.— CHECK ALL SAFETY CONTROLS.— CHECK AND TIGHTEN ALL ELECTRICAL CONNECTIONS.— CHECK EVAPORATOR COIL.— CLEAN CONDENSER COIL OF DIRT AND DEBRIS.— INSPECT CONTACTORS.— INSPECT WIRING FOR DAMAGE.— CHECK VOLTAGE AND AMPERAGE TO MOTOR.— CYCLE UNIT AND TEST FOR PROPER OPERATION.

no.	description	date
01	ISSUED FOR TENDER	2013/08/30
00	ISSUED FOR TENDER	2013/06/11
0B	ISSUED FOR 99% REVIEW	2013/04/18
0A	ISSUED FOR REVIEW	2013/03/28