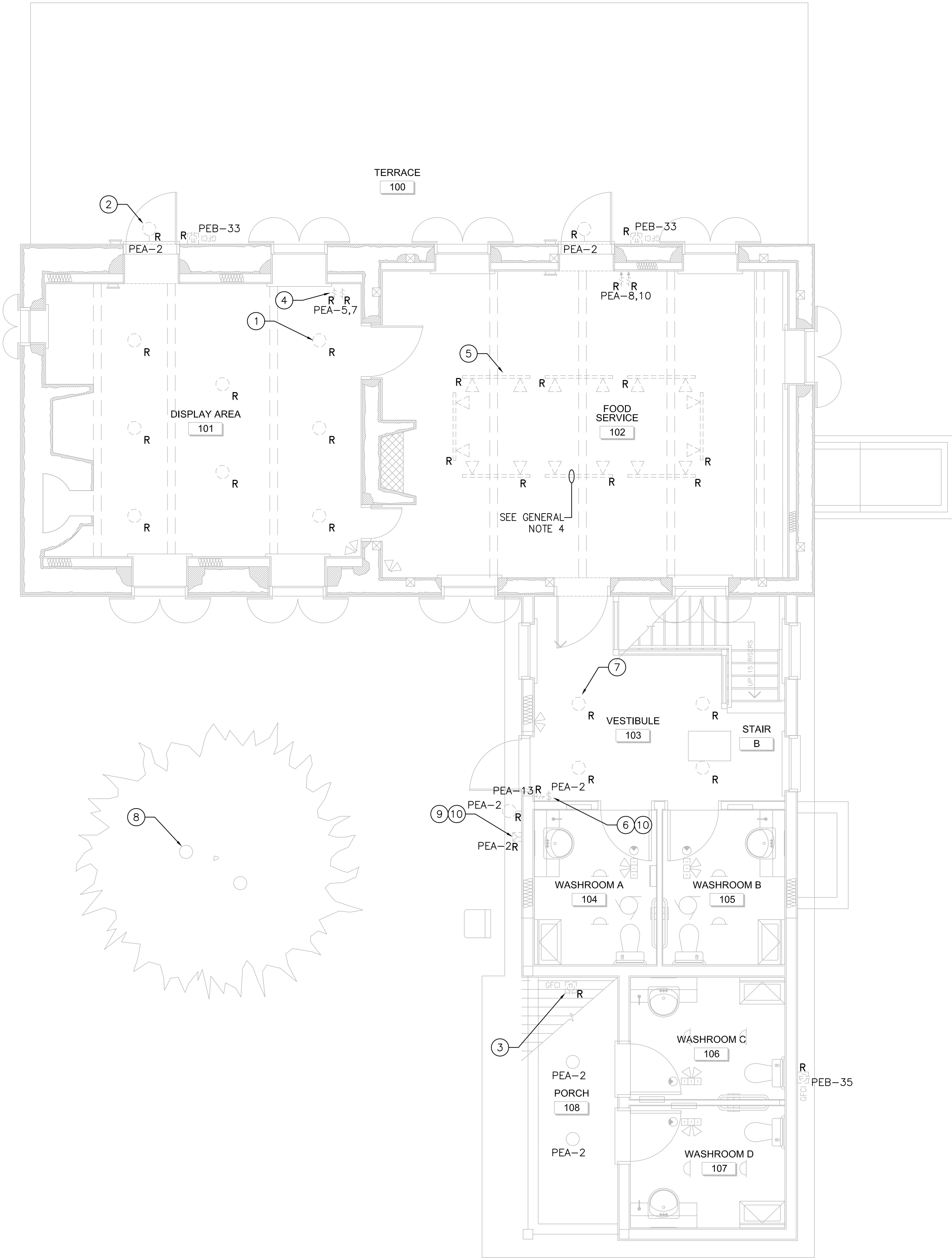


GENERAL NOTES	
1	NOT ALL EXISTING EQUIPMENT AND DEVICES SHOWN. ALL DEVICES NOT SHOWN TO BE REMOVED ARE EXISTING TO REMAIN. CONTRACTOR TO ENSURE SERVICES TO ALL EXISTING DEVICES REMAINING ARE MAINTAINED DURING THE WORK.
2	CONTRACTOR SHALL SAFELY DISCONNECT POWER OF ANY EQUIPMENT BEING REMOVED BEFORE EXECUTING WORK.
3	CIRCUIT DESIGNATIONS SHOWN ON DRAWINGS MAY NOT BE EXACTLY AS ON SITE. CONTRACTOR SHALL CONFIRM EXISTING CIRCUIT DESIGNATIONS PRIOR TO PROCEEDING WITH ANY WORK.
4	CONTRACTOR SHALL PRICE DEMOLITION OF TRACK LIGHTING IN FOOD SERVICE AREA SEPARATELY.

DRAWING NOTES	
1	CONTRACTOR SHALL REMOVE EXISTING POT LIGHT FIXTURE. EXISTING CONDUIT ALONG WITH CONDUCTOR TO REMAIN. TYPICAL FOR ALL POT LIGHTS IN DISPLAY AREA (ROOM 101).
2	CONTRACTOR SHALL REMOVE EXISTING OUTDOOR, WALL MOUNTED, LIGHT FIXTURE. EXISTING CONDUIT ALONG WITH CONDUCTOR TO REMAIN. TYPICAL FOR ALL EXTERIOR, WALL MOUNTED LIGHT FIXTURES.
3	CONTRACTOR SHALL REMOVE EXISTING GFCI RECEPTACLE AND COVER PLATE. EXISTING CONDUIT ALONG WITH CONDUCTOR TO REMAIN. TYPICAL FOR ALL EXISTING OUTDOOR RECEPTACLES.
4	EXISTING LIGHTING CONTROLS TO BE REMOVED. CONTRACTOR SHALL MAINTAIN EXISTING CONDUIT ALONG WITH CONDUCTOR FOR NEW CONTROLS. TYPICAL FOR ALL LIGHTING CONTROLS IN ROOMS 101, 102 AND 103.
5	CONTRACTOR TO REMOVE ENTIRE TRACK LIGHTING FIXTURES IN ROOM 102, INCLUDING ALL RELEVANT MOUNTING HARDWARE. EXISTING CONDUIT ALONG WITH CONDUCTOR TO REMAIN.
6	IF POWER FEED COMES FROM EXISTING EMERGENCY LIGHTING CIRCUIT, CONTRACTOR SHALL REMOVE POWER FEED FROM EMERGENCY LIGHTING CIRCUIT. CONTRACTOR SHALL MAINTAIN EXISTING WIRING CONFIGURATION.
7	CONTRACTOR TO REMOVE EXISTING POT LIGHT FIXTURE. EXISTING CONDUCTORS TO REMAIN. TYPICAL FOR ALL POT LIGHTS IN VESTIBULE (ROOM 103).
8	EXISTING OUTDOOR TREE ACCENT LIGHTING TO REMAIN. TYPICAL FOR TWO (2) TREE ACCENT LIGHTS. LAMPS TO BE REMOVED.
9	CONTRACTOR SHALL REMOVE EXISTING PHOTOCELL.
10	CONTRACTOR TO LOCATE AND REMOVE OUTDOOR LIGHTING CONDUIT ALONG WITH CONDUCTOR BACK TO POINT OF CONNECTION FROM BATTERY PACK LIGHTING (EMERGENCY LIGHTING). EXISTING EMERGENCY LIGHTING TO REMAIN ON CIRCUIT PEA-2.



LEGEND:	
---	R EXISTING EQUIPMENT TO BE REMOVED
---	R EXISTING EQUIPMENT TO REMAIN
○	LIGHT FIXTURE
⊕	WALL MOUNTED LIGHT FIXTURE
—V—V—	TRACK LIGHTING
⎓	EMERGENCY BATTERY UNIT COMPLETE WITH INTEGRAL HEADS
⏏	REMOTE DOUBLE HEAD EMERGENCY LIGHT
⏏	EXHAUST FAN
\$	SINGLE POLE TOGGLE SWITCH
\$	SINGLE POLE SWITCH WITH DIMMER
☐	PHOTOCELL
⦿	MOTION DETECTOR
GFCI	GROUND FAULT CIRCUIT INTERRUPTER



Real Estate Management, Design and Construction Branch
Direction de la gestion de l'immobilier, design et construction

Design and Construction Division
Division design et construction

director - Claude Robert - directeur

architecture architecture

Robertson Martin Architects

216 Pimlico Ave.
Ottawa, ON K1S1Y2
Phone: 613-567-1361
Fax: 613-567-9462
Email: mail@robertsonmartin.com

RMA

(L+D)

LALANDE + DOYLE ARCHITECTS INC. Tel: 613.233.2900 400-307 Queen Street
www.lplusd.com Fax: 613.233.1008 Ottawa, Ontario K1P 6E5

mechanical/electrical mécanique/électrique

DESSAU

2625 QUEENSWAY DR. SUITE 100
OTTAWA, ONTARIO K2B 9K2

P-0002653

Issued or revised émis ou révisé		
01	ISSUED FOR TENDER	2013/08/30
00	ISSUED FOR TENDER	2013/06/11
0B	ISSUED FOR 99% REVIEW	2013/04/18
0A	ISSUED FOR REVIEW	2013/03/28
no.	description	date

project
projet

MAISON CHARRON
REHABILITATION

drawing
dessin

MAIN FLOOR LIGHTING & POWER
DEMOLITION

approved by approuvé par	C. WHITE
designed by conçu par	J. GAUTHIER
drawn by dessiné par	J. GAUTHIER
date	MARCH 2013
scale échelle	AS NOTED
NCC project no. no. du projet de la CCN	sheet no. no. de la feuille
DC-4080	E-001