

DETAIL 2

FOR MOUNTING HOLES
SEE DETAIL 3

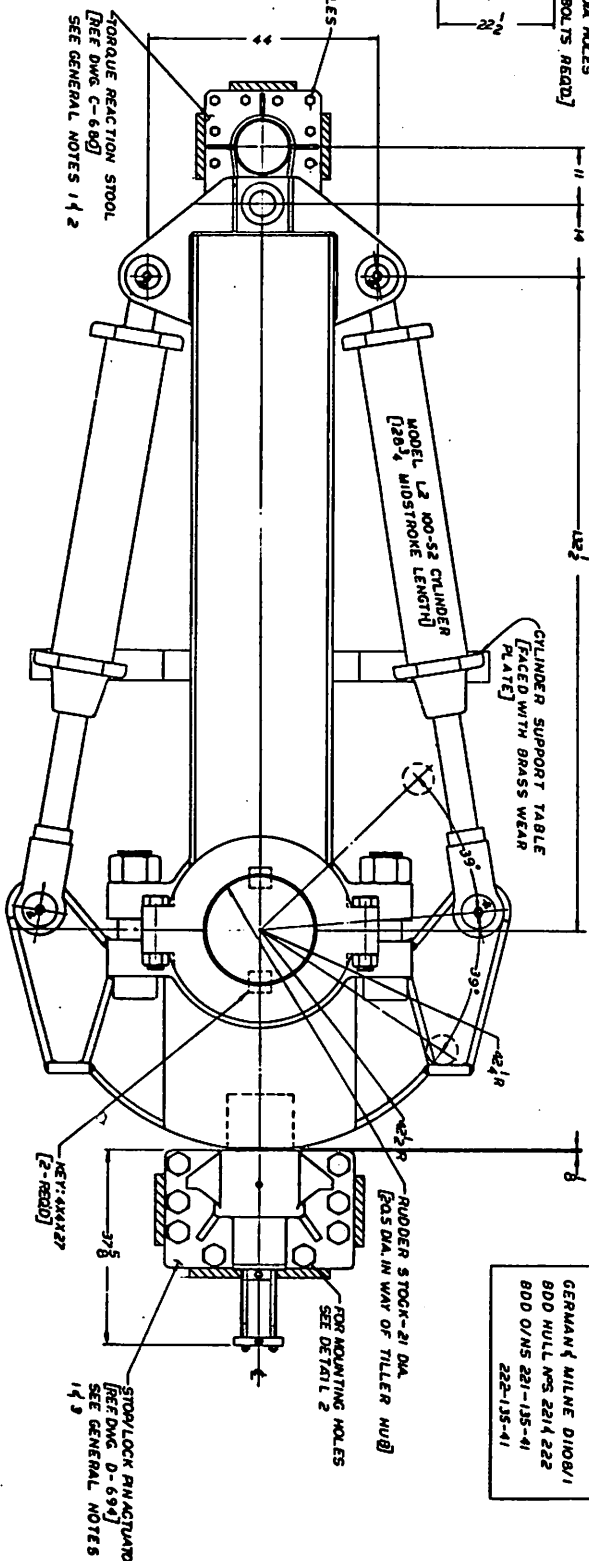
12-1⁵/₈ DIA HOLES -
[2-1³/₄" FITTED BOLTS -
READY
DETAIL 1]

GENERAL NOTES

1. TABLES A & B MUST PROVIDE ADEQUATE SUPPORT FOR THE TORQUE REACTION STUOL. † THE STOP/LOCK PIN ACTUATOR
2. TABLE C IS REQUIRED ONLY IF BOTH HALVES OF THE CARRIER BEARING ARE TO BE REMOVED FROM THEIR SECURED POSITIONS AT THE SAME TIME
3. ADEQUATE CHECKING AT 4 PLACES IS REQUIRED TO SECURE COMPONENTS TO BOTH TABLES A & B
4. ‡ INDICATES LUBRICATION POINT

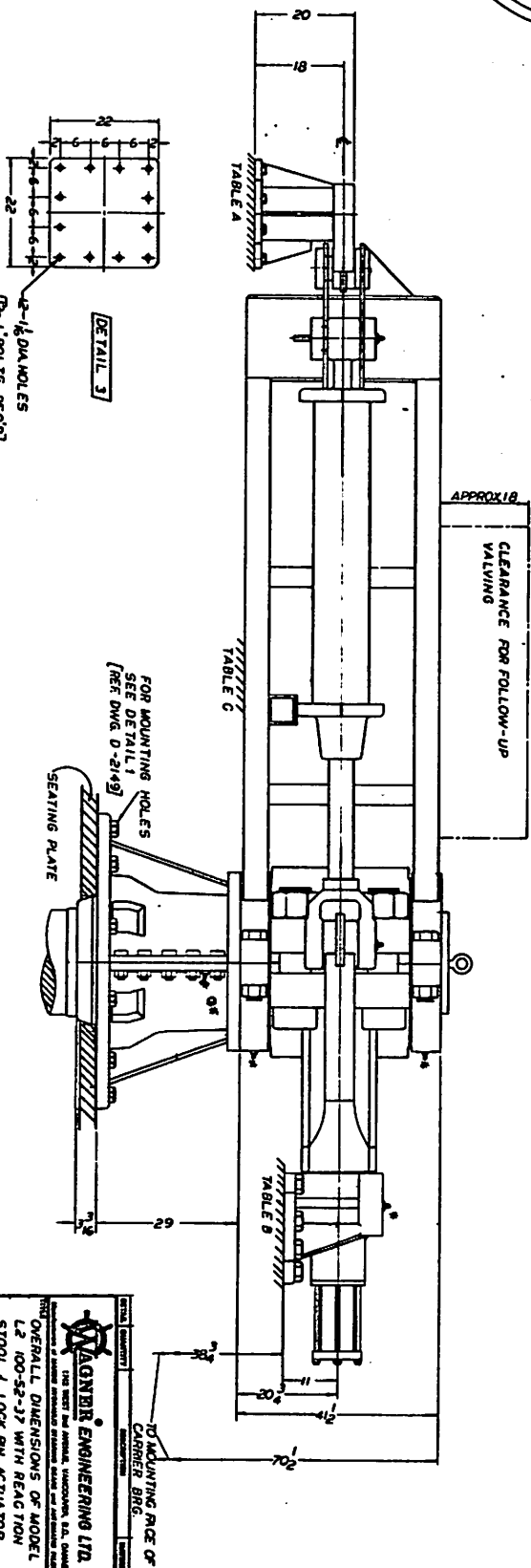
NOTE:

ALL DIMENSIONS IN INCHES



REFERENCES

GERMAN, MILNE DIOB
BDD HULL NPS 2214 222
BDD O/N5 221-135-41
222-135-41



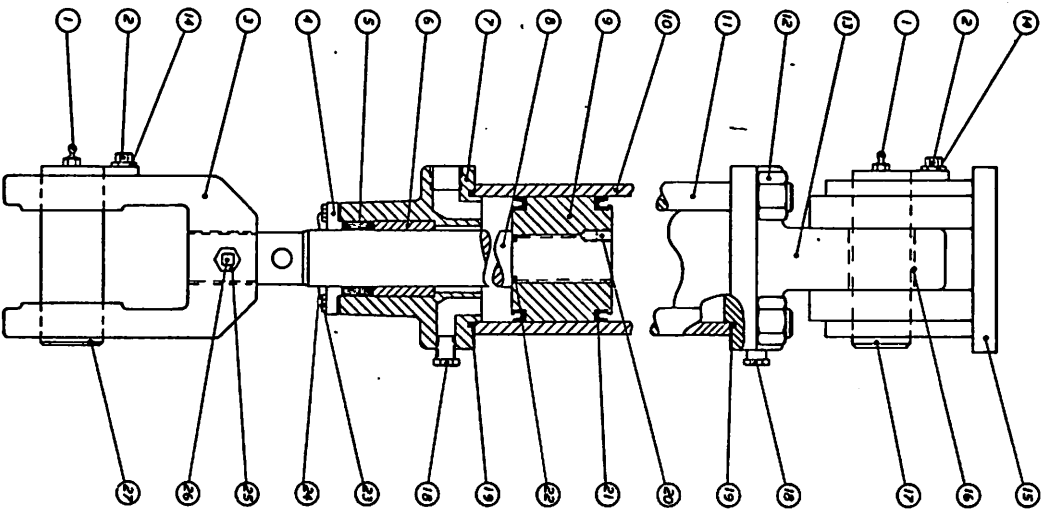
WAGNER ENGINEERING LTD.
1745 WEST 10TH AVENUE, VANCOUVER, B.C. CANADA

OVERALL DIMENSIONS OF MODEL
L2 100-52-37 WITH REACTION

STOOL LOCK PIN ACTUATOR

APR 8/76	1-1-0	QUOTE IN 0824
----------	-------	---------------

D-6886



CYLINDER MODEL	ASSEMBLY NO.	1 35-15	1 35-17	1 40-20	1 40-22	1 55-21	1 55-28
1 GREASE NIPPLE	1 35-15	1 35-17	1 40-20	1 40-22	1 55-21	1 55-28	
2 CAPSCREW	1 35-15	1 35-17	1 40-20	1 40-22	1 55-21	1 55-28	
3 GLAND	1 35-15	1 35-17	1 40-20	1 40-22	1 55-21	1 55-28	
4 GLAND	1 35-15	1 35-17	1 40-20	1 40-22	1 55-21	1 55-28	
5 PACKING	1 35-15	1 35-17	1 40-20	1 40-22	1 55-21	1 55-28	
6 HEAD	1 35-15	1 35-17	1 40-20	1 40-22	1 55-21	1 55-28	
7 PISTON ROD	1 35-15	1 35-17	1 40-20	1 40-22	1 55-21	1 55-28	
8 PISTON	1 35-15	1 35-17	1 40-20	1 40-22	1 55-21	1 55-28	
9 PISTON RING	1 35-15	1 35-17	1 40-20	1 40-22	1 55-21	1 55-28	
10 PISTON RING	1 35-15	1 35-17	1 40-20	1 40-22	1 55-21	1 55-28	
11 PISTON RING	1 35-15	1 35-17	1 40-20	1 40-22	1 55-21	1 55-28	
12 PISTON RING	1 35-15	1 35-17	1 40-20	1 40-22	1 55-21	1 55-28	
13 PISTON RING	1 35-15	1 35-17	1 40-20	1 40-22	1 55-21	1 55-28	
14 PISTON RING	1 35-15	1 35-17	1 40-20	1 40-22	1 55-21	1 55-28	
15 PISTON RING	1 35-15	1 35-17	1 40-20	1 40-22	1 55-21	1 55-28	
16 PISTON RING	1 35-15	1 35-17	1 40-20	1 40-22	1 55-21	1 55-28	
17 PISTON RING	1 35-15	1 35-17	1 40-20	1 40-22	1 55-21	1 55-28	
18 PISTON RING	1 35-15	1 35-17	1 40-20	1 40-22	1 55-21	1 55-28	
19 PISTON RING	1 35-15	1 35-17	1 40-20	1 40-22	1 55-21	1 55-28	
20 PISTON RING	1 35-15	1 35-17	1 40-20	1 40-22	1 55-21	1 55-28	
21 PISTON RING	1 35-15	1 35-17	1 40-20	1 40-22	1 55-21	1 55-28	
22 PISTON RING	1 35-15	1 35-17	1 40-20	1 40-22	1 55-21	1 55-28	
23 PISTON RING	1 35-15	1 35-17	1 40-20	1 40-22	1 55-21	1 55-28	
24 PISTON RING	1 35-15	1 35-17	1 40-20	1 40-22	1 55-21	1 55-28	
25 PISTON RING	1 35-15	1 35-17	1 40-20	1 40-22	1 55-21	1 55-28	
26 PISTON RING	1 35-15	1 35-17	1 40-20	1 40-22	1 55-21	1 55-28	
27 PISTON RING	1 35-15	1 35-17	1 40-20	1 40-22	1 55-21	1 55-28	

CYLINDER MODEL	ASSEMBLY NO.	1 70-24	1 70-32	1 90-40	1 100-52
1 GREASE NIPPLE	1 70-24	1 70-32	1 90-40	1 100-52	
2 CAPSCREW	1 70-24	1 70-32	1 90-40	1 100-52	
3 GLAND	1 70-24	1 70-32	1 90-40	1 100-52	
4 GLAND	1 70-24	1 70-32	1 90-40	1 100-52	
5 PACKING	1 70-24	1 70-32	1 90-40	1 100-52	
6 HEAD	1 70-24	1 70-32	1 90-40	1 100-52	
7 PISTON ROD	1 70-24	1 70-32	1 90-40	1 100-52	
8 PISTON	1 70-24	1 70-32	1 90-40	1 100-52	
9 PISTON RING	1 70-24	1 70-32	1 90-40	1 100-52	
10 PISTON RING	1 70-24	1 70-32	1 90-40	1 100-52	
11 PISTON RING	1 70-24	1 70-32	1 90-40	1 100-52	
12 PISTON RING	1 70-24	1 70-32	1 90-40	1 100-52	
13 PISTON RING	1 70-24	1 70-32	1 90-40	1 100-52	
14 PISTON RING	1 70-24	1 70-32	1 90-40	1 100-52	
15 PISTON RING	1 70-24	1 70-32	1 90-40	1 100-52	
16 PISTON RING	1 70-24	1 70-32	1 90-40	1 100-52	
17 PISTON RING	1 70-24	1 70-32	1 90-40	1 100-52	
18 PISTON RING	1 70-24	1 70-32	1 90-40	1 100-52	
19 PISTON RING	1 70-24	1 70-32	1 90-40	1 100-52	
20 PISTON RING	1 70-24	1 70-32	1 90-40	1 100-52	
21 PISTON RING	1 70-24	1 70-32	1 90-40	1 100-52	
22 PISTON RING	1 70-24	1 70-32	1 90-40	1 100-52	
23 PISTON RING	1 70-24	1 70-32	1 90-40	1 100-52	
24 PISTON RING	1 70-24	1 70-32	1 90-40	1 100-52	
25 PISTON RING	1 70-24	1 70-32	1 90-40	1 100-52	
26 PISTON RING	1 70-24	1 70-32	1 90-40	1 100-52	
27 PISTON RING	1 70-24	1 70-32	1 90-40	1 100-52	

ITEM	DESCRIPTION	QTY	PART NO.	QTY	PART NO.	QTY	PART NO.	QTY	PART NO.	QTY	PART NO.
------	-------------	-----	----------	-----	----------	-----	----------	-----	----------	-----	----------

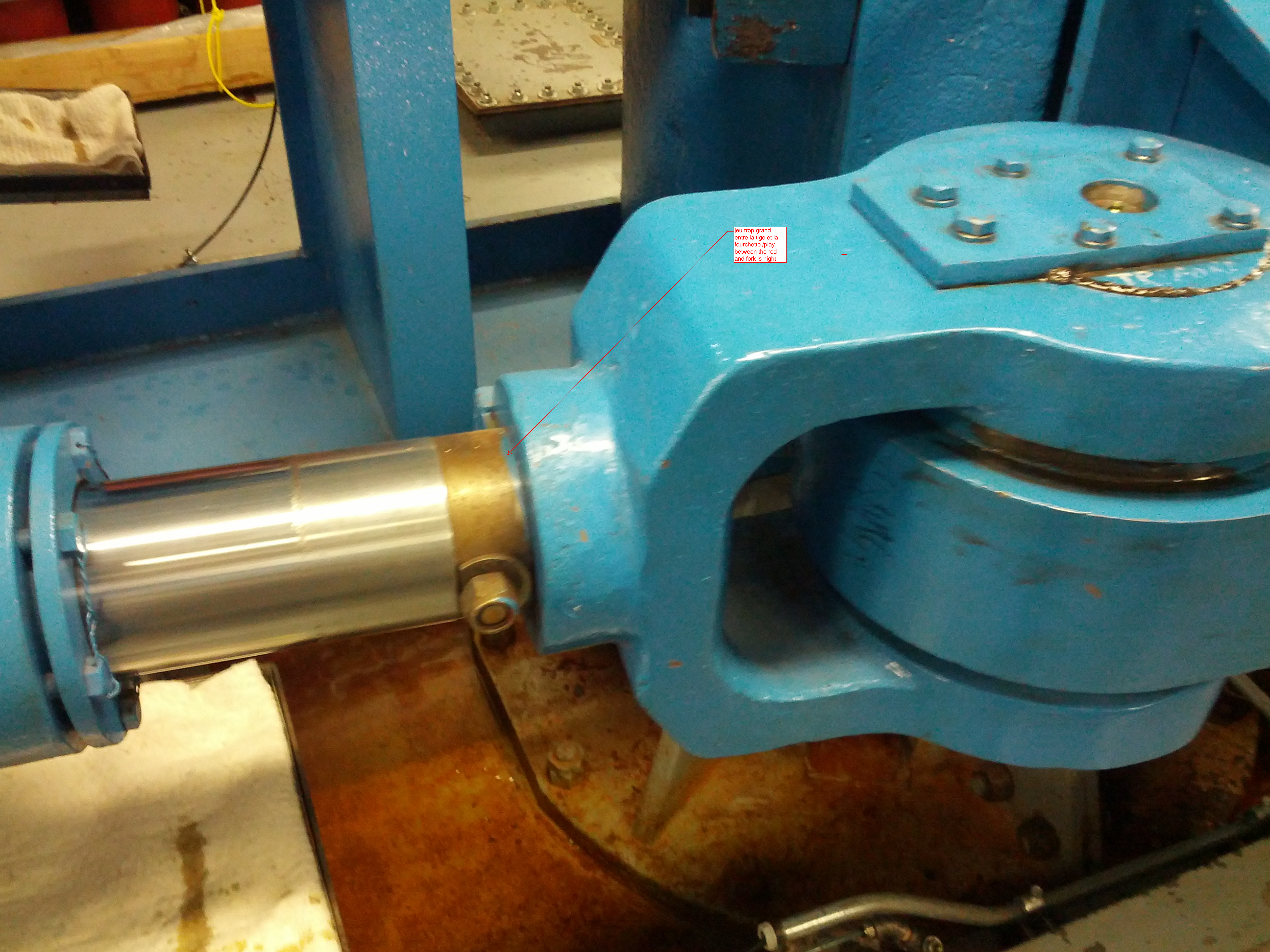
NOTE:
NOT TO SCALE

VAGNER ENGINEERING LTD.
100 WEST 100 AVENUE, WILLOWDALE, ONT. M2H 1C1
CANADA

MODEL CYLINDERS
PARTS LIST

QUOTE IN
DRAWING IN
D-661





jeu trop grand
entre la tige et la
fourchette /play
between the rod
and fork is high

