

FIG. 15 PLN - TANKER WHARF
SCALE 1" = 20'

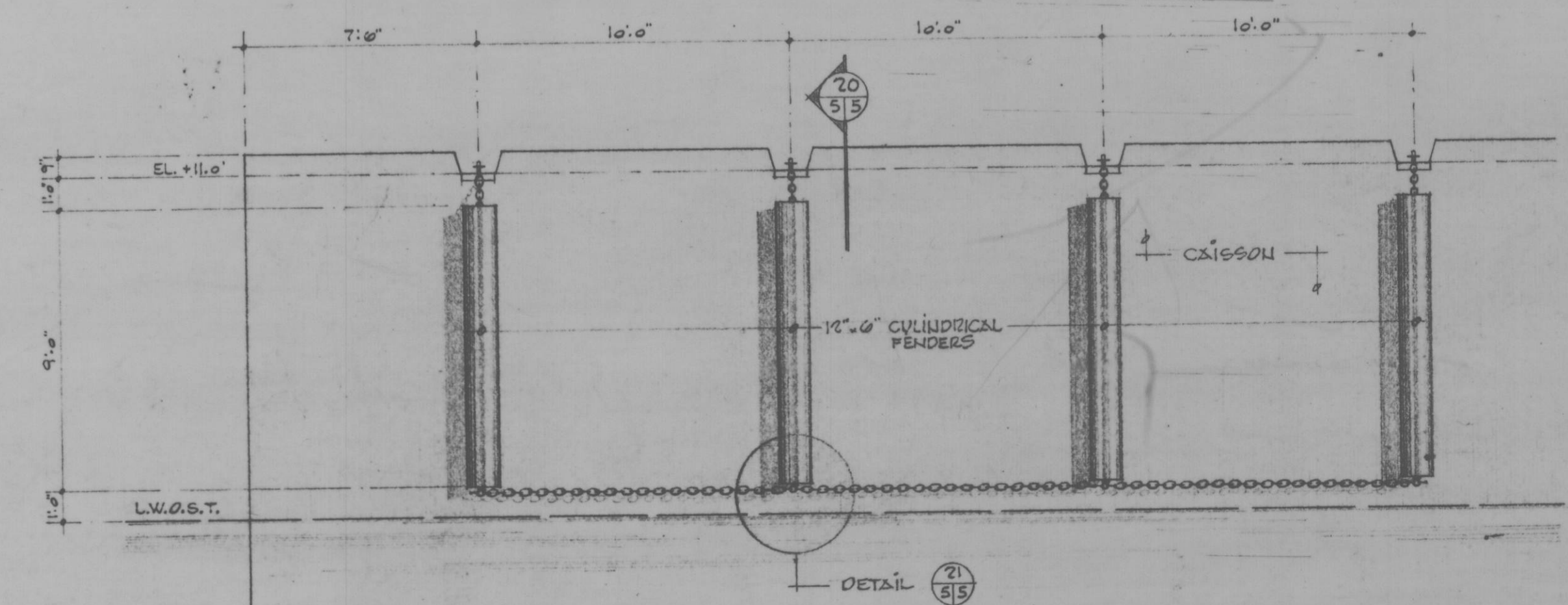


FIG. 16 ELEVATION
SCALE 1/4" = 1'-0"

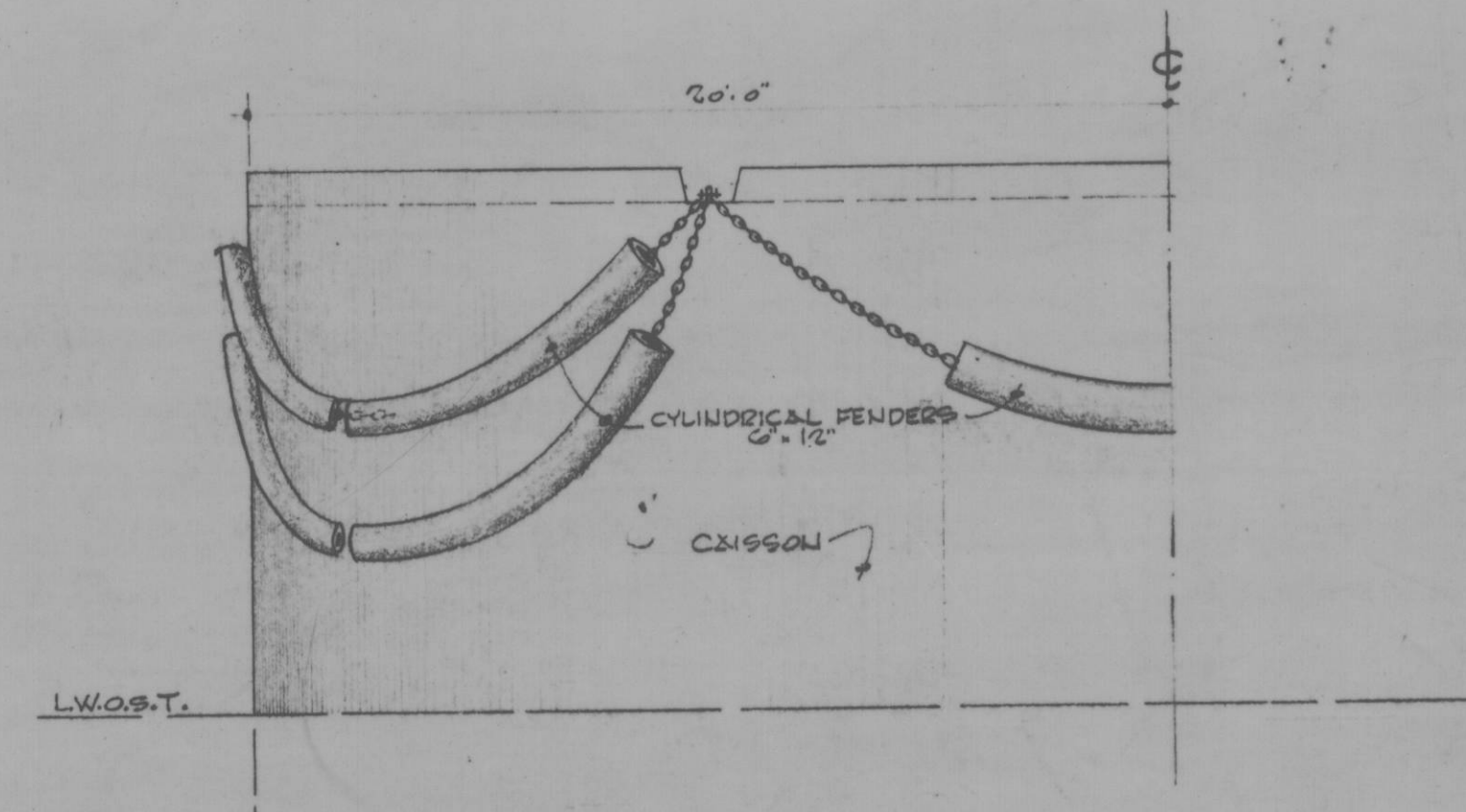


FIG. 17 ELEVATION
SCALE 1/4" = 1'-0"

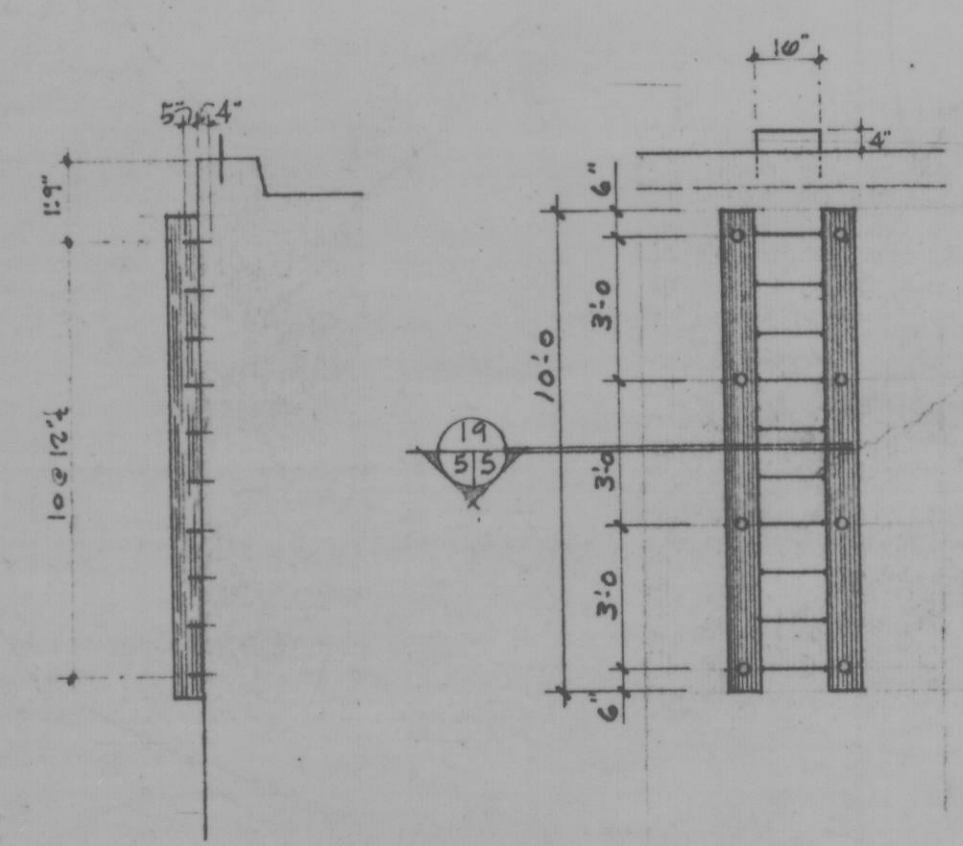


FIG. 18 ELEVATION OF LADDERS
SCALE 1/4" = 1'-0"

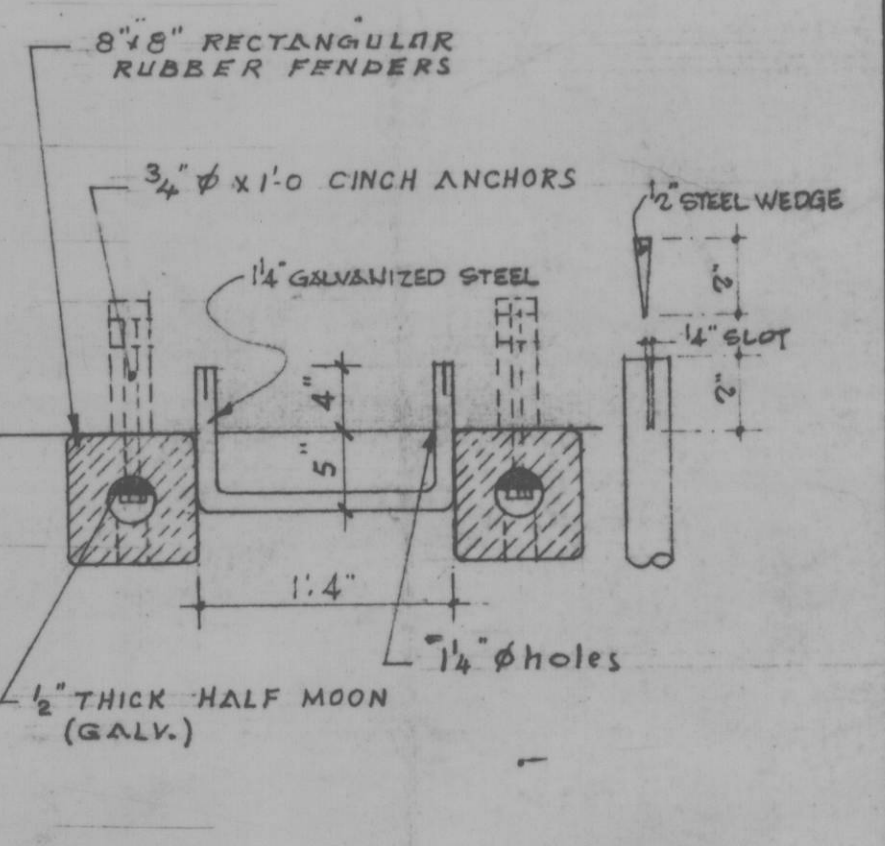


FIG. 19 SECTION
SCALE 1" = 1'-0"

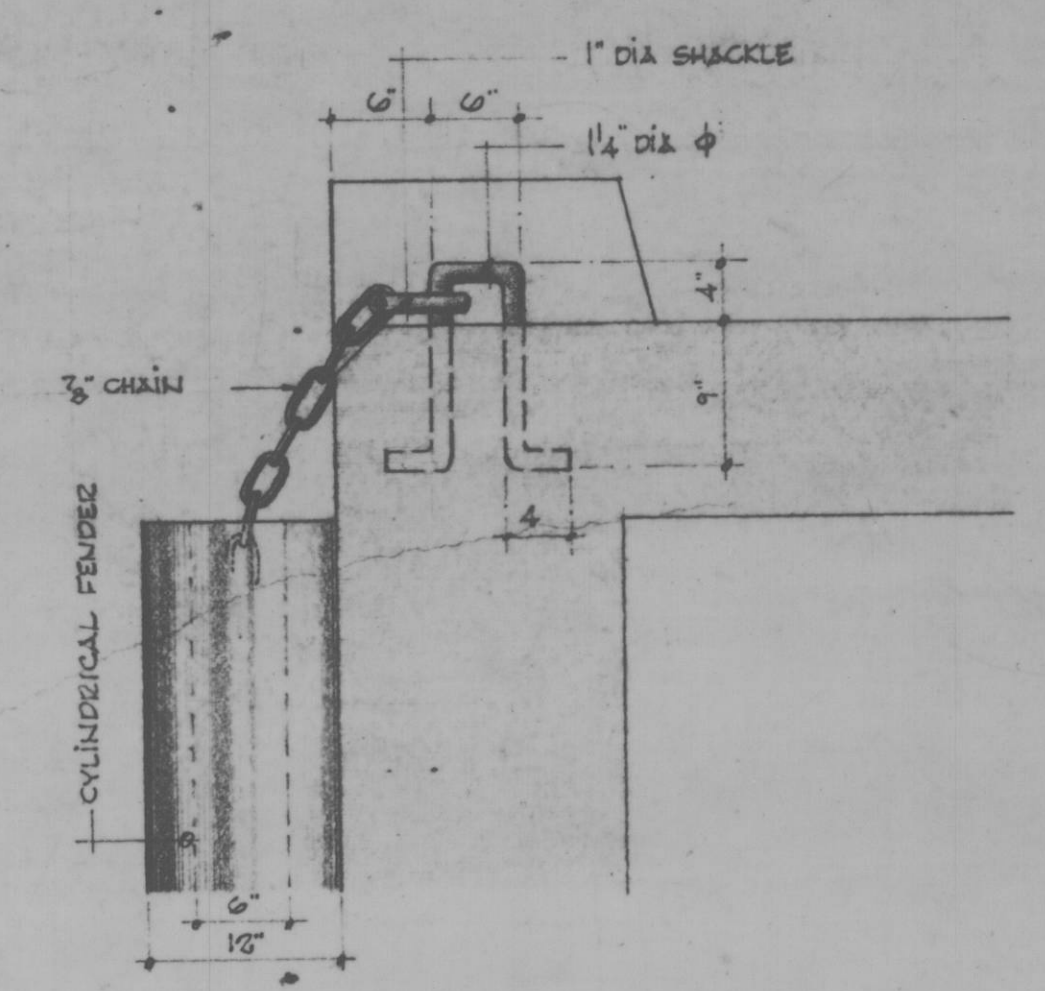


FIG. 20 SECTION
SCALE 1" = 1'-0"

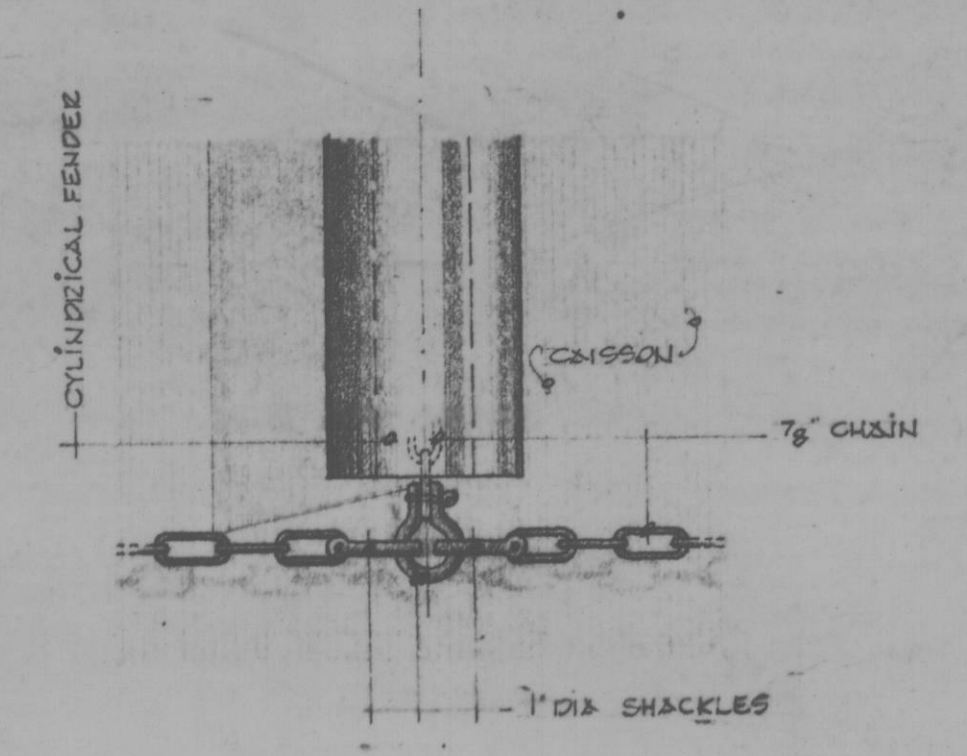


FIG. 21 DETAIL
SCALE 1" = 1'-0"

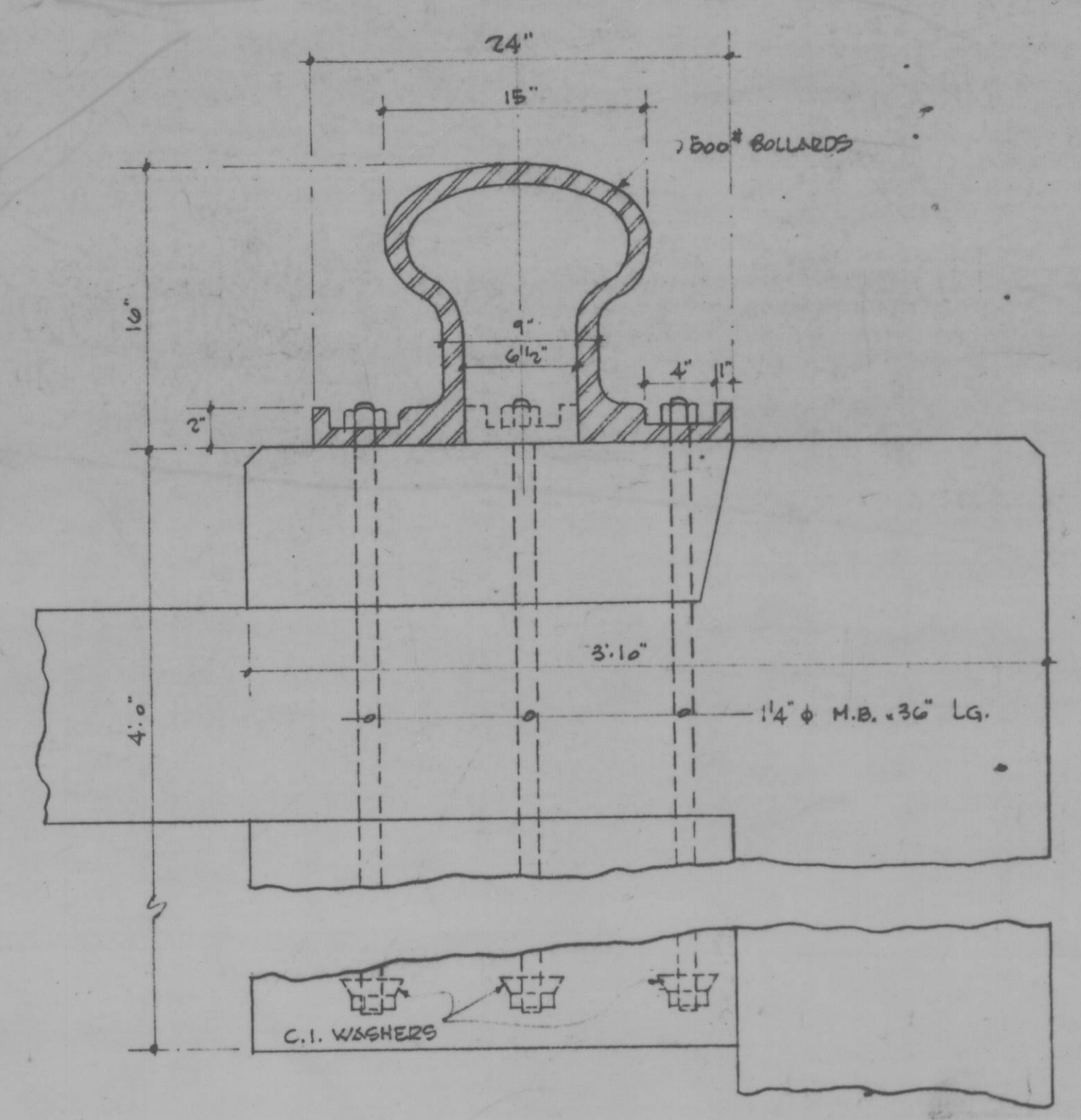


FIG. 22 BOLLARD SECTION DETAIL
SCALE 1/2" = 1'-0"

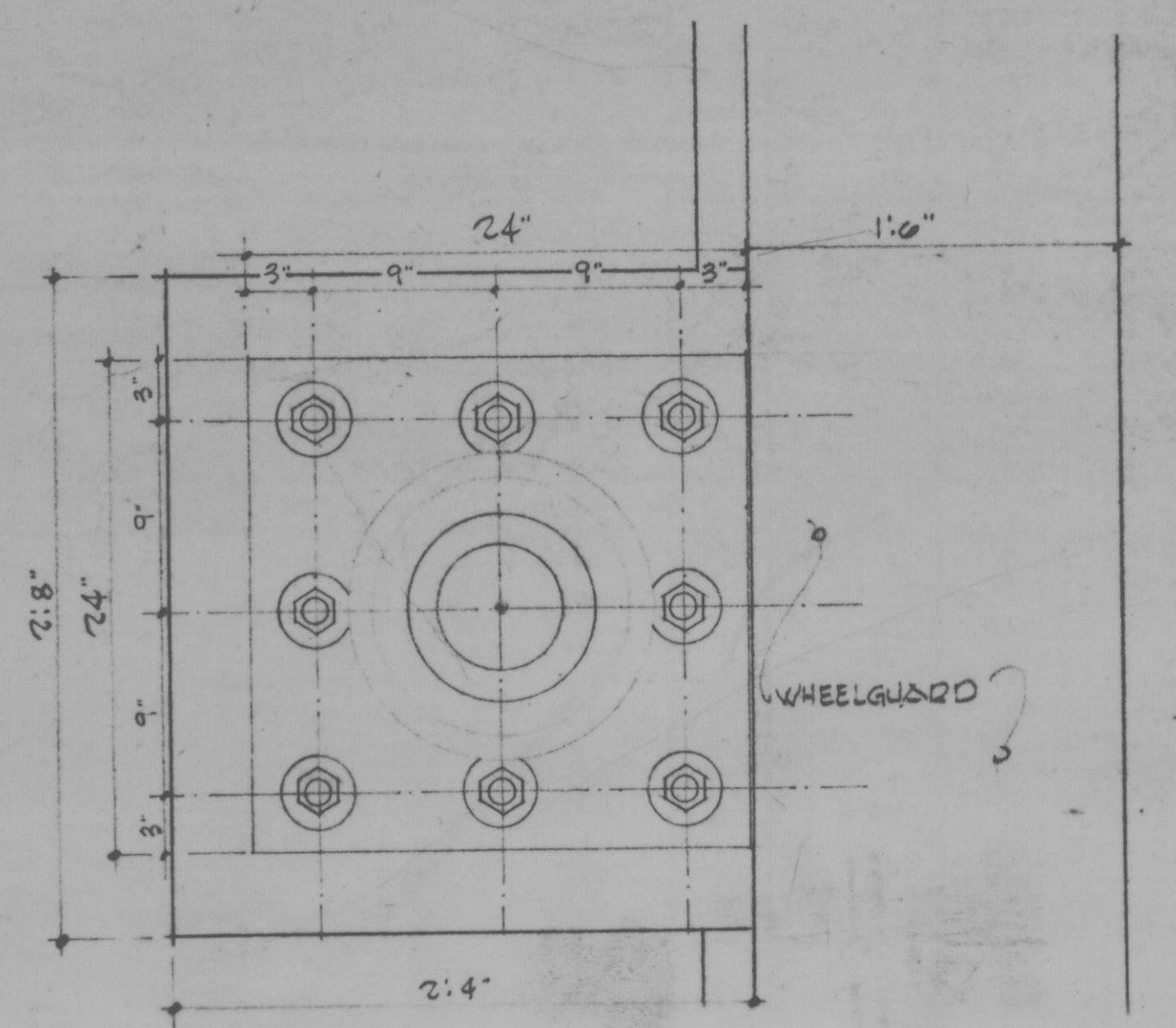


FIG. 23 BOLLARD PLAN
SCALE 1/2" = 1'-0"

ALL HARDWARE FOR FENDERS AND LADDERS WILL BE GALVANIZED

Department of Public Works
Ministère des Travaux publics

MARQUIS, VANDRY & ASS.
"CONSULTING ENGINEERS"

RIMOUSKI : 471 CATHEDRAL AVE.
QUEBEC : 880 STE-FOY ROAD.

A detail no. detail no.
B location drawing no. loc. drawing no.
C drawing no. drawing no.

revisions

project title titre du projet

HARBOUR DEVELOPMENT
AMÉNAGEMENT PORTUAIRE
"AS BUILT"

Cap. aux-Meules. I.M. P. Qué.

drawing title titre du dessin

TANKER WHARF
MISC. DETAILS
QUAI DES PÉTROLIERS
DETAILS DIVERS

designed by A. ALBERT conçu par

date JANUARY 30th 1970

drawn by P. LEVEQUE dessiné par

date JANUARY 30th 1970

checked by [Signature] vérifié par

approved by [Signature] approuvé par

date [Signature]

Project Manager Directeur de projet

D.P.W. Project Manager Administrateur de projet M.T.P.

project number no. de projet

C-34-17

drawing no. dessin no.

5/24

N.T.P. 121-45-190R

M 48834-D

DPW 700 F