

ADDENDUM 1

This Addendum is issued prior to Bid Closing Date to provide revisions and clarification. All such revisions and clarifications forms part of the Bid and Contract Documents, and amends the original Bid Documents titled:

Project:	Lease Space, 22nd Floor, Calgary Place, 355-4th Avenue SW Calgary, Alberta
Solicitation No.:	E0209-141335/A
Dated:	2013-10-10

The effects of this Addendum shall be included in the Bid Price.

Reason for Addendum: Coordination

Addendum Issue Date: 2013-10-21

Total of Pages (Including Cover and Attachments): 7

CONTENTS OF THIS ADDENDUM FOLLOW THIS COVER DRAWING

1 General

Bidders are reminded that with respect to the Bid Form, should any items be omitted or be illegible, should any alteration be made to the text, or should any condition be added on or submitted with the Bid Form that was not requested by the Consultant, their Bid may be declared invalid and rejected by the Owner.

The following Addendum amends the original Drawings and Specifications – Calgary Place 22nd Floor Decommissioning, Calgary, Alberta, dated 2013-10-04 as noted below. Ensure that all parties submitting bids are aware of items in this Addendum and any affect on other work. Perform Work affected by this Addendum in accordance with the Contract Documents.

2 Attachments

PSD-ADD01-A001

PSD-ADD01-A002

PSD-ADD01-M001

3 Specifications

3.1 SECTION 01 11 00 - SUMMARY OF WORK

3.1.1 Item 1.2.3. Revise to read:

“Provide and install new Building standard suspended t-bar grid system throughout the space and modification of sprinkler layout. Provide for 30% new replacement ceiling panels, and retain 70% of existing ceiling panels for verification and stockpiled for future reinstallation by separate contract. Install all cut-panels at locations of sprinkler heads, etc.”

3.1.2 Item 1.2.5. Revise to read:

“Cleaning of existing window blinds. Remove and reinstall existing blinds or protect and keep clean during construction.”

3.1.3 Item 1.2.14. Delete in its entirety.

3.2 SECTION 01 14 00 - WORK RESTRICTIONS

3.2.1 Items 1.7.3 and 1.7.4. Delete in their entirety.

3.2.2 Part 1. Add:

“.11 EXISTING ELEVATOR AND ACCESS

.1 Loading dock door clearance is 13'-6".

.2 Retail shuttle elevator:

.1 Maximum Weight: 3500 lbs

.2 Door Width: 3'-5"

.3 Door Height: 7'-0"

.4 Car Width: 6'-0"

.5 Car Height: 8'-6"

.6 Car Depth: 5'-6"

.7 Diagonal Dimension: 11'-0"

3.3 SECTION 02 41 19.16 – SELECTIVE DEMOLITION

3.3.1 Item 1.1.1.8. Revise to read:

“Demolition of existing ceiling panels and retaining 70% of existing ceiling panels for verification, and stockpiling for future reinstallation by separate contract. Demolition of existing ceiling supporting t-bar grid, provide temporary support for the light fixtures - Refer to Drawing E2.01.”

3.3.2 Item 1.1.1.15. Delete in its entirety.

3.4 SECTION 09 51 99 – ACOUSTICLS CEILINGS FOR MINOR WORKS

3.4.1 Item 1.2. Add:

“.5 Allow for 30% new ceiling panels for product base building verification, and stockpiled on floor for future installation.

3.4.2 Item 3.2.3.1. Revise to read:

“Install all cut-acoustical panels and tiles in ceiling suspension system at locations of sprinkler heads, etc.

3.5 SECTION 12 24 13 – ROLLER WINDOW SHADES

3.5.1 Delete Section 12 24 13 – Roller Window Shades in its entirety, and all associated references.

4 Drawings

4.1 DRAWING A2.00 - DEMOLITION & NEW PARTITION PLAN

4.1.1 Indicated Wall Types at gridline B10 as full height walls with STC rating. Refer to attached Drawing PSD-ADD01-A002.

4.1.2 Delete Key Note 7 in its entirety.

4.2 DRAWING A2.01 - PARKING GARAGE DEMOLITION PLAN

4.2.1 Add Existing Partition Construction Schedule, Tag 1 for reinforced concrete block from top of slab to underside of slab above. Refer to attached Drawing PSD-ADD01-A001.

4.2.2 Add Keynote Tag 2 to clarify extent of painted lines.

4.3 DRAWING A3.00 – REFLECTED CEILIING DEMOLITION PLAN

4.3.1 Keynotes, Clarifications:

4.3.1.1 Keynote A: Existing beam W410 x 46

4.3.1.2 Keynote B: Existing beam W530 x 123 with 25 x 200 plate top and bottom

4.3.1.3 Keynote C: Existing beam W530 X 82 with 20 x 200 plate top and bottom

4.3.1.4 Keynote D: Existing beam W530 X 82

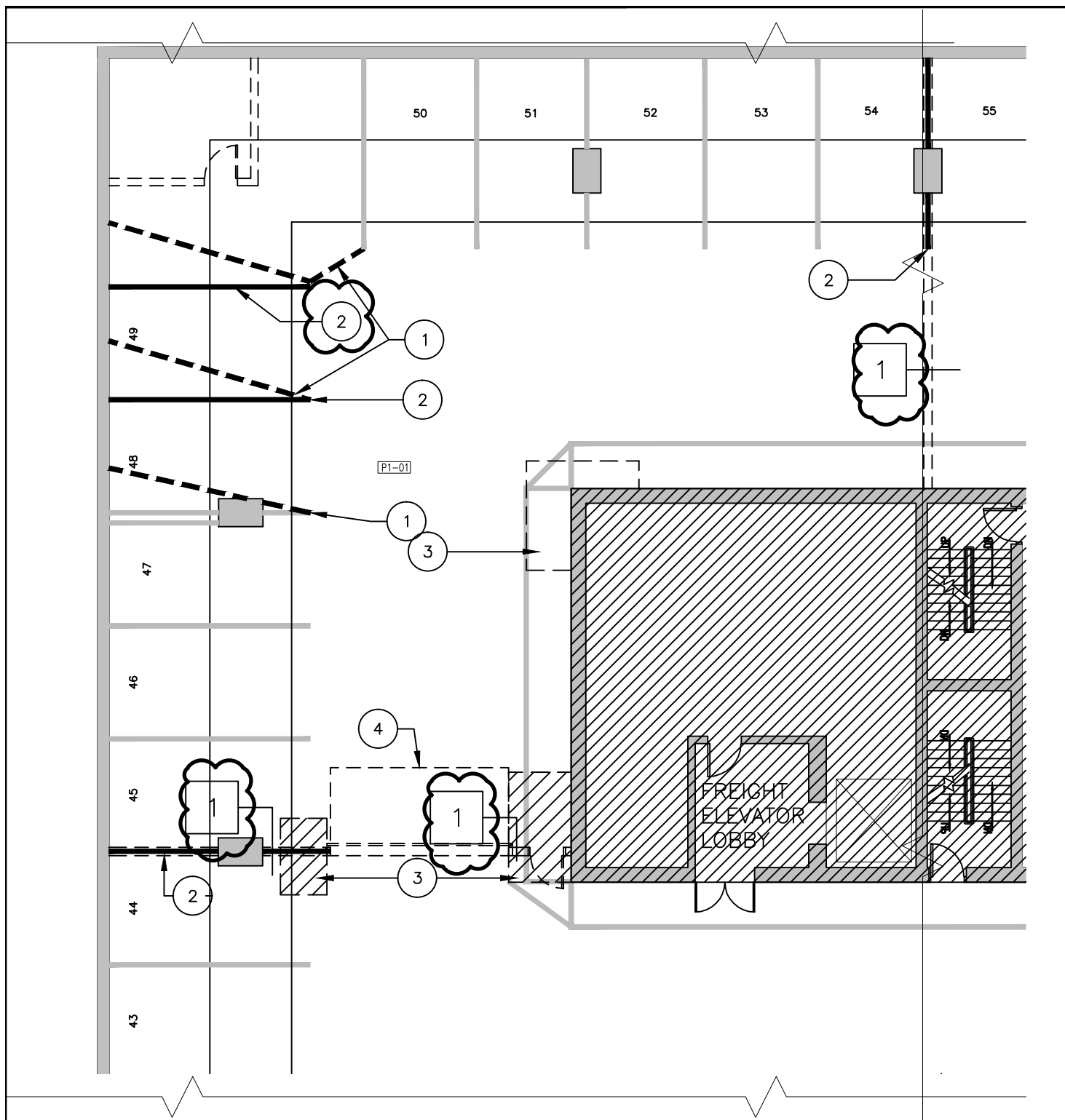
4.3.1.5 *Keynote E: Existing beam W530 x 82*

4.3.1.6 Steel sections are approximate and actual size may vary. Allow for total weight based on sections noted.

4.4 DRAWING M0.01 – MECHANICAL LEGEND, DETAILS & DRAWING INDEX


- 4.4.1 Revise Fire Protection Legend in accordance with attached Drawing PSD-ADD01-M001.

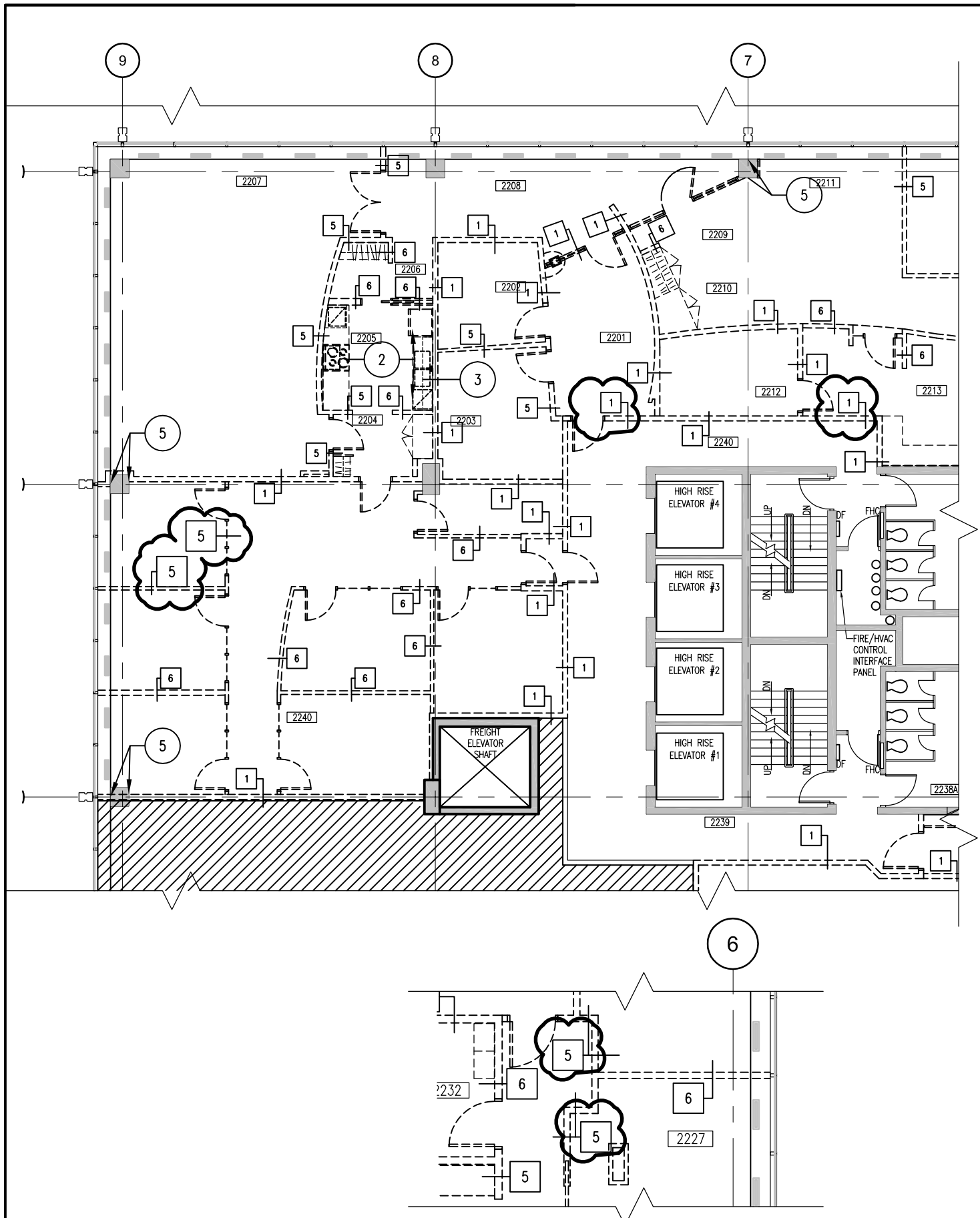
END OF ADDENDUM No. 1



EXISTING PARTITION CONSTRUCTION SCHEDULE

- 1 T/O SLAB TO U/S SLAB
- REINFORCED CONCRETE BLOCK

A2.01	PARKING GARAGE	-	13/10/18	COST CODE		DRAWN/DESSINÉ	AC	
REV./MOD.	DESCRIPTION	BY / PAR	DATE	TITLE/TITRE		SCALE/ÉCHELLE 1:150		
 Public Safety and Emergency Preparedness Canada Sécurité publique et Protection civile Canada						DWG.NO. / NO. DESSIN		REV./MOD.
						PSD-ADD01-A001		1

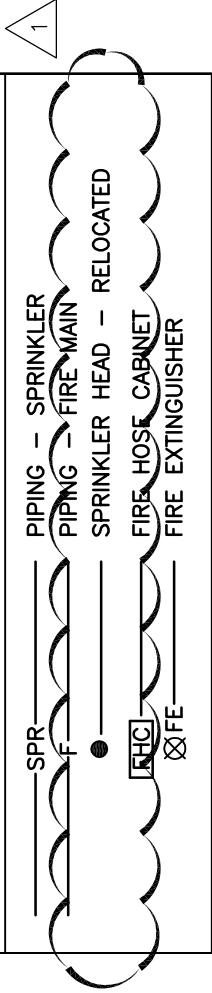


A2.00	DEMO/PARTITION PLAN	—	13/10/18	COST CODE		DRAWN/DESSINÉ	AC	
REV./MOD.	DESCRIPTION	BY / PAR	DATE	TITLE/TITRE		SCALE/ÉCHELLE	1:150	
						DWG.NO. / NO. DESSIN		REV./MOD.
						PSD-ADD01-A002		1



Public Safety and
Emergency Preparedness Canada
Sécurité publique et
Protection civile Canada

FIRE PROTECTION



TO BE READ IN CONJUNCTION WITH DRAWING: M0.01
DIALOG PROJECT #: 00402.C01

01	ISSUED FOR ADD001	RJB	18.10.13	COST CODE		DRAWN/DESSINÉ	RJB	18.10.13
REV./MOD.	DESCRIPTION	BY / PAR	DATE	TITLE/TITRE				
				PS DECOMMISSIONING				
				PARTIAL MECHANICAL LEGEND				
				DETAILS & DRAWING INDEX				
				PSD-ADD01-M001				
				01				