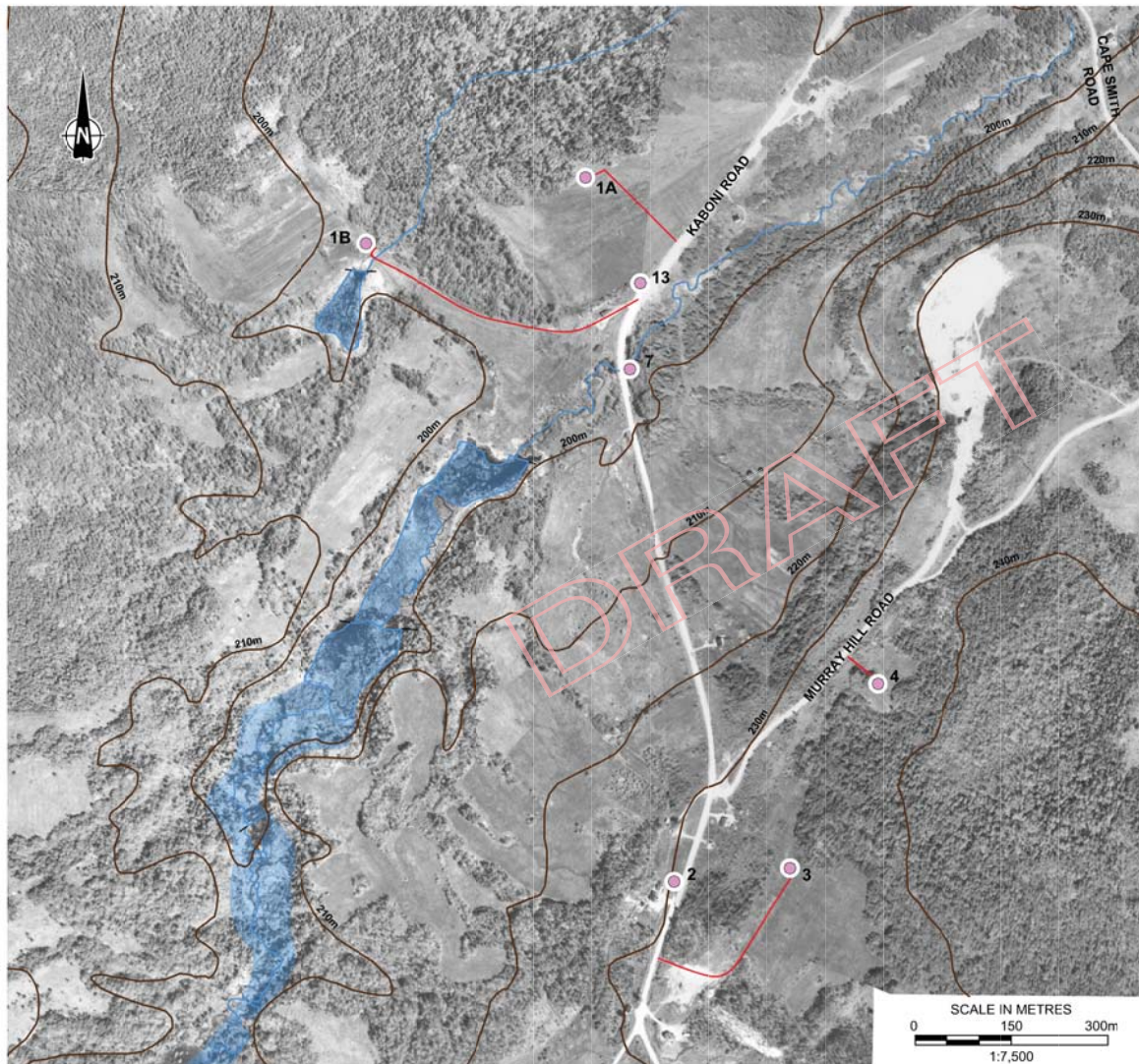


APPENDIX 2



KEY PLAN

**LEGEND**

- HISTORICAL OIL/GAS WELL
- APPROXIMATE ACCESS ROUTE
- GROUND SURFACE CONTOUR
- WATERCOURSE
- LAKE/POND/WETLAND

**REFERENCE**

PLAN BASED ON ONTARIO BASIC MAPPING BY GEOGRAPHY NETWORK AS OF SEPTEMBER 21, 2012; 1983 AERIAL PHOTOGRAPHS NUMBERS A25973\_051, A25973\_051, AND A25973\_051.

**NOTES**

THIS DRAWING IS SCHEMATIC ONLY AND IS TO BE READ IN CONJUNCTION WITH ACCOMPANYING TEXT.  
ALL LOCATIONS ARE APPROXIMATE ONLY.

PROJECT		WIKWEMIKONG UNCEDED INDIAN RESERVE #26 MANITOULIN ISLAND, ONTARIO		
TITLE		<b>LOCATION PLAN</b>		
<p><b>Golder Associates</b> LONDON, ONTARIO</p>	PROJECT No.	12-1134-0194	FILE No.	1211340194A01001
	CADD	L1MKDCH	SCALE	AS SHOWN   REV
	CHECK		DATE	27/12
			<b>FIGURE 1</b>	



**APPENDIX A**  
**Site Photographs**



**Photograph 1:** Well 1A – Looking south-east. Photograph taken September 13, 2012. See accompanying text for description of the well and site conditions.



**Photograph 2:** Well 1A – Looking north-west from Kaboni Road. Well is located near stand of trees, approximately 185 m from roadway. Photograph taken September 13, 2012. See accompanying text for description of the well and site conditions.



**APPENDIX A**  
**Site Photographs**



**Photograph 3:** Well 1B – Looking north-east. Photograph taken September 13, 2012. See accompanying text for description of the well and site conditions.



**Photograph 4:** Well 1B – Looking south-east. Photograph taken September 13, 2012. See accompanying text for description of the well and site conditions.



## APPENDIX A

### Site Photographs



**Photograph 5:** Well 1B – Looking south-west. Well is located approximately 5 m north-east of clearing. See accompanying text for description of the well and site conditions.



**Photograph 6:** Well 2 – Looking south. Well is located 8 m from road adjacent to small evergreen tree. There is a shallow drainage ditch south of the well. Photograph taken September 13, 2012. See accompanying text for description of the well and site conditions.



## APPENDIX A Site Photographs



**Photograph 7:** Well 2 – Looking north. Well is located in south-west corner of MN 780 Kaboni Road, approximately 2 m west of overhead wires. See accompanying text for description of the well and site conditions.



**Photograph 8:** Well 3 – Looking north. Well is sealed with a metal plate and casing is perforated (red arrow). Photograph taken September 13, 2012. See accompanying text for description of the well and site conditions.



## APPENDIX A Site Photographs



**Photograph 9:** Well 3 – Looking south. Photograph taken September 13, 2012. See accompanying text for description of the well and site conditions.



**Photograph 10:** Well 4 – Looking south. Photograph taken September 13, 2012. See accompanying text for description of the well and site conditions.



## APPENDIX A Site Photographs



**Photograph 11:** Well 4 – Looking north-west towards Cape Smith Road. Photograph taken September 13, 2012. See accompanying text for description of the well and site conditions.



**Photograph 12:** Well 7 – Looking west. Well is approximately 14 m east of Kaboni Road in wooded area. Photograph taken September 13, 2012. See accompanying text for description of the well and site conditions.



## APPENDIX A Site Photographs



**Photograph 13:** Well 7 – Looking south-east. A drainage swale is located east of the well. Photograph taken September 13, 2012. See accompanying text for description of the well and site conditions.



**Photograph 14:** Well 7 – Looking south towards discharge point of swale into nearby creek. Photograph taken September 13, 2012. See accompanying text for description of the well and site conditions.





## APPENDIX A Site Photographs



**Photograph 15:** Well 7 – Looking north-east from Kaboni Road. Well is to east of road within wooded area. Photograph taken September 13, 2012. See accompanying text for description of the well and site conditions.



**Photograph 16:** Well 13 – Looking north. Photograph taken September 13, 2012. See accompanying text for description of the well and site conditions.



## APPENDIX A Site Photographs



**Photograph 17:** Well 13 – Looking north. Well is located within roadside ditch approximately 16m west of Kaboni Road, immediately east of treeline. Photograph taken September 13, 2012. See accompanying text for description of the well and site conditions.