

GENERAL NOTES:
1. ALL WINDOW FRAMES TO BE ENGINEERED BY MANUFACTURER. SHOP DRAWINGS TO BE SEALED.
2. ISOLATE DISSIMILAR METALS
3. CONFIRM ALL FRAME ANGLES AND SIZES ON SITE.



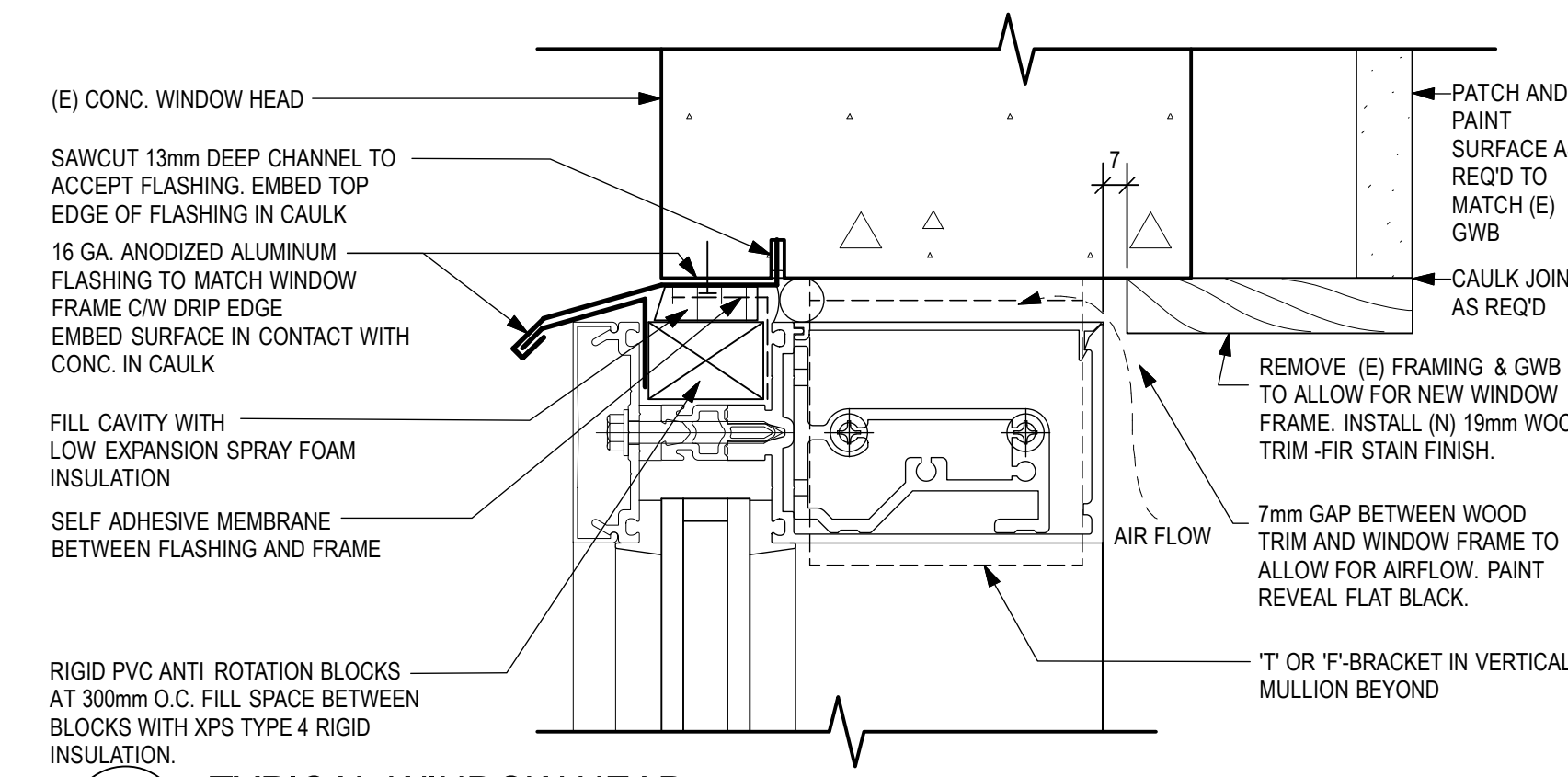
6		
5		
4		
3		
2	TENDER	Aug 14/2013
1	90% SUBMISSION	Jul 19/2013
Revision/	Description/Description	Date/Date

Project title/Titre du projet
**PACIFIC BIOLOGICAL CENTER
TAYLOR BUILDING
STAIR TOWER
WINDOW REPLACEMENT
NANAIMO, B.C.**

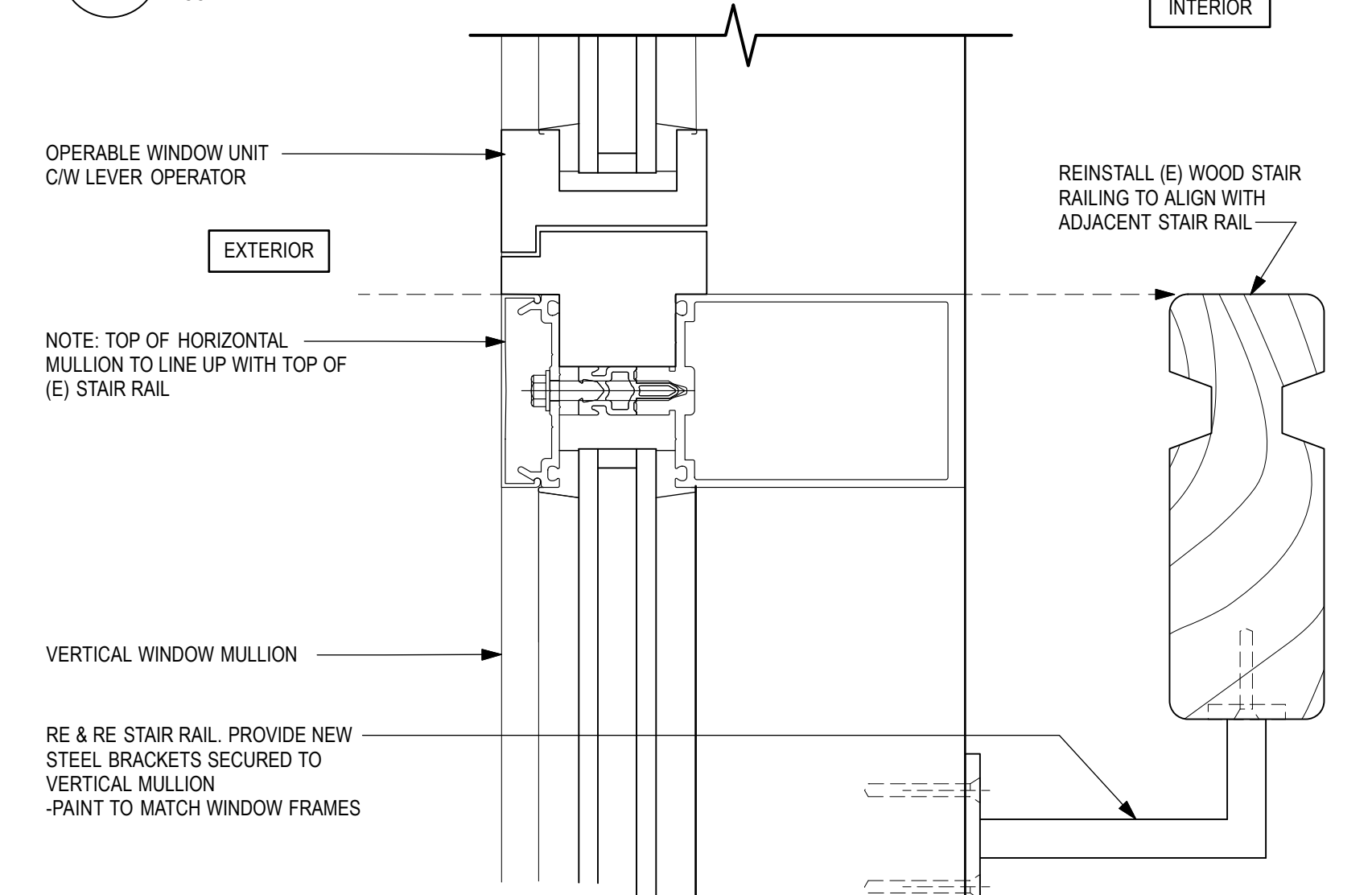
Consultant Signature Only
Designed by/Concept par
RH
Drawn by/Dessiné par
DM, RH
Regional Manager, Architectural and Engineering Services
Gestionnaire régionale, Services d'architecture et de génie, TPSSC
Drawing title/Titre du dessin

DETAILS

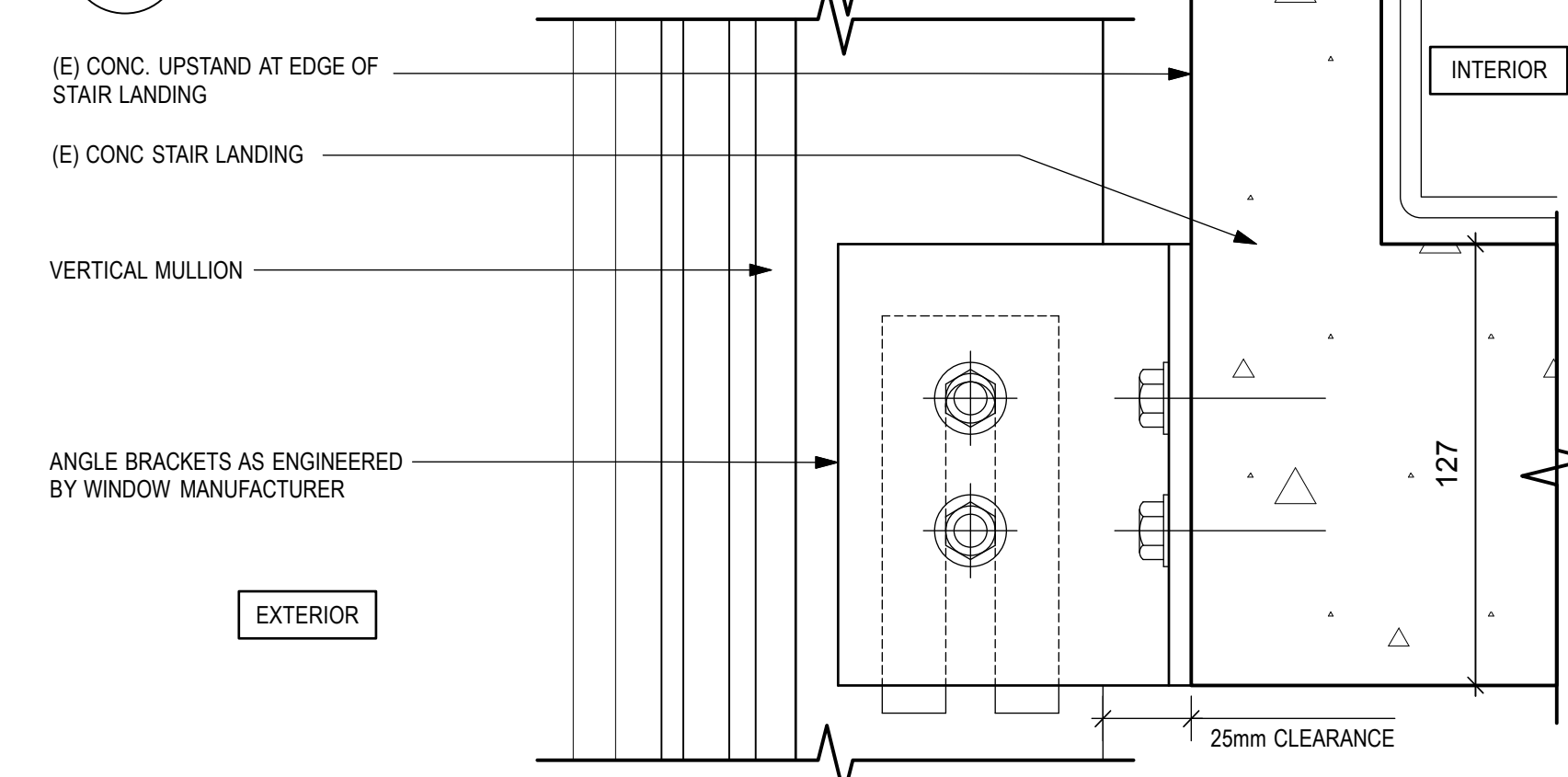
Project No./No. du projet F1700-130475 E.C. Project No.	Sheet/ Feuille A-3 OF 3	Revision no./ La Révision no. 0
--	--------------------------------------	--



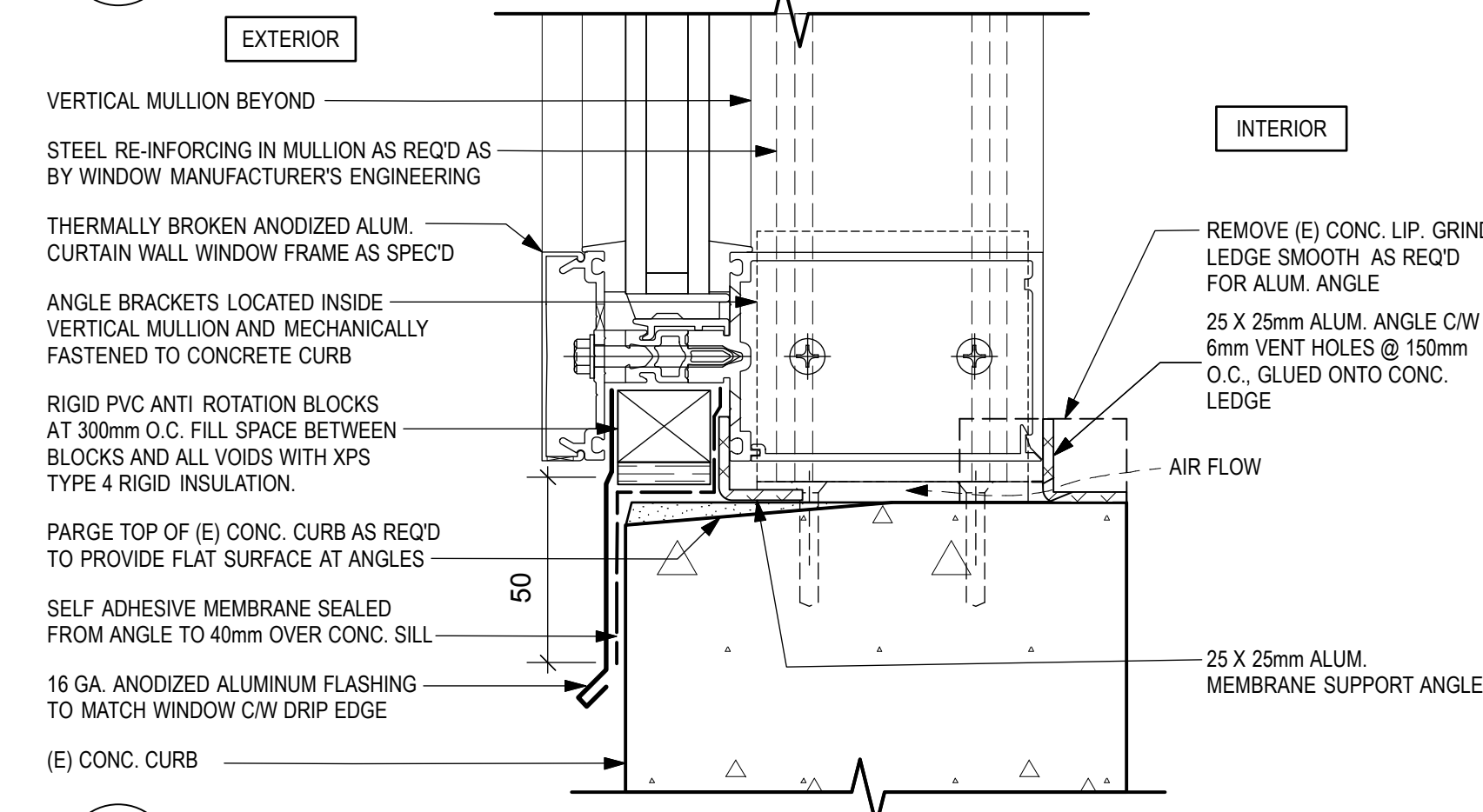
1 TYPICAL WINDOW HEAD
A-3 SCALE: 1:2



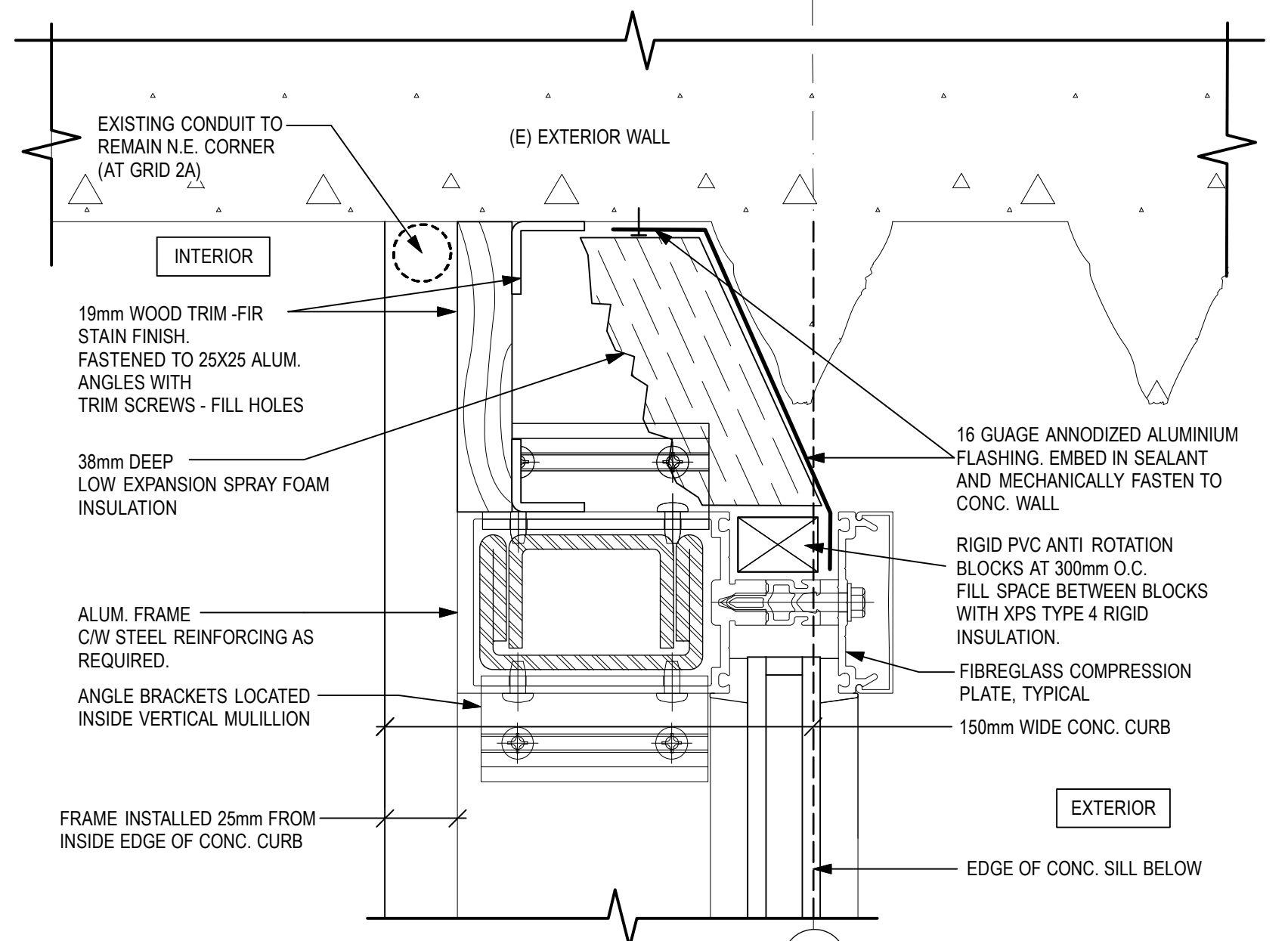
2 WINDOW AT STAIR RAIL
A-3 SCALE: 1:2



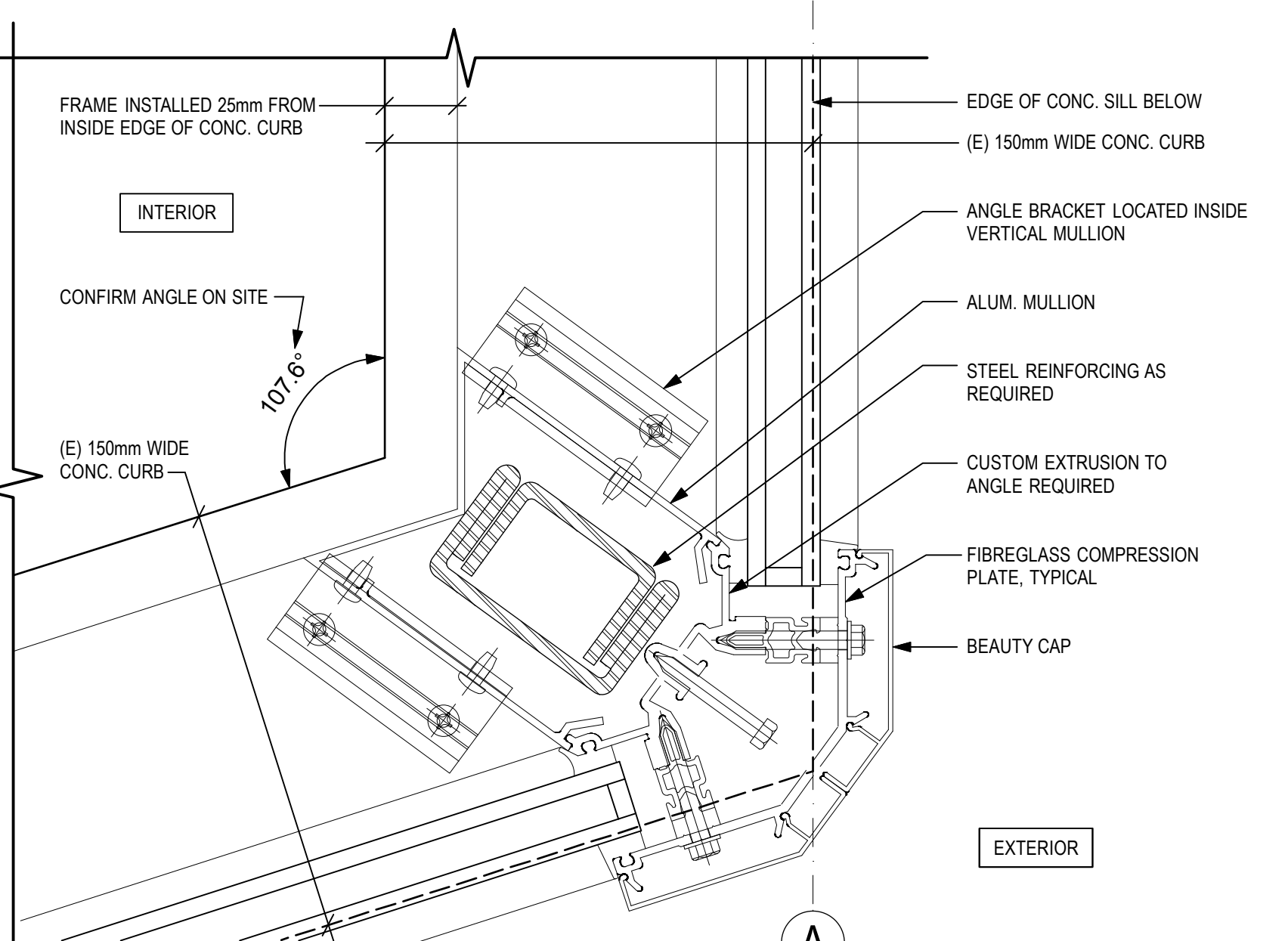
3 WINDOW MULLION AT LANDING
A-3 SCALE: 1:2



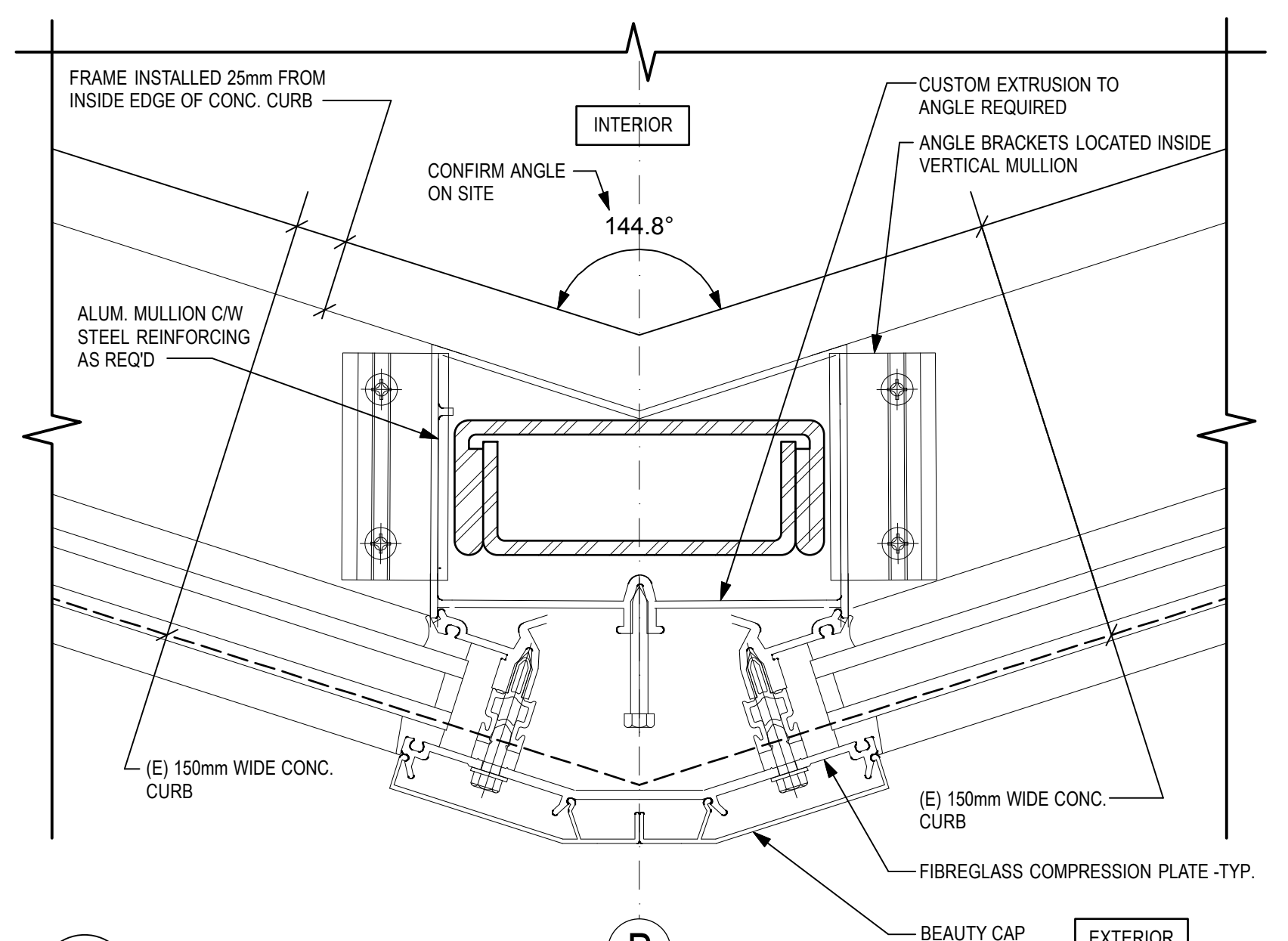
4 TYP. MULLION AT CONC. SILL
A-3 SCALE: 1:2



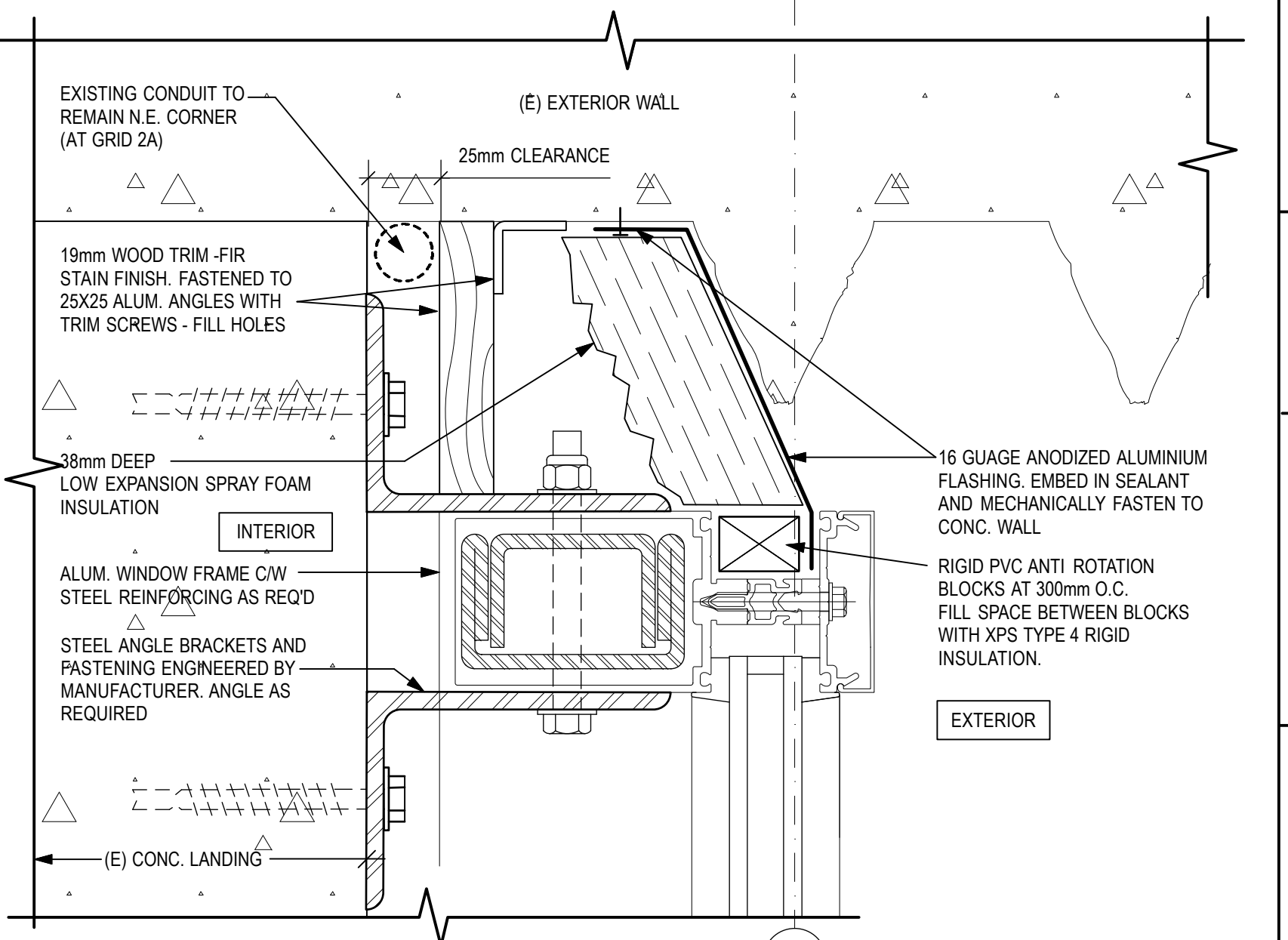
5 JAMB 'A' & 'C' AT CONC. SILL
A-3 SCALE: 1:2



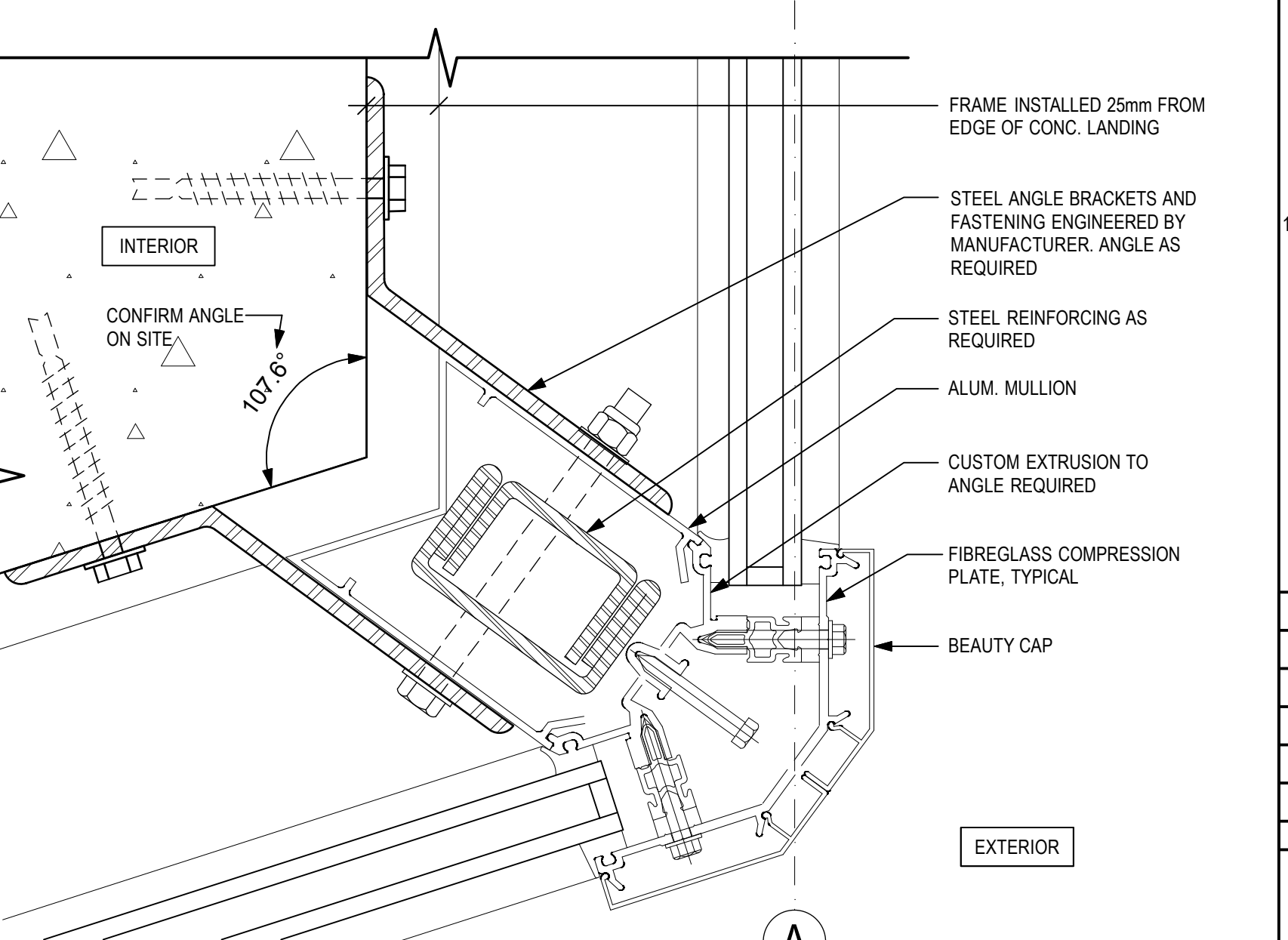
6 MULLION 'A' & 'C' AT CONC. SILL
A-3 SCALE: 1:2



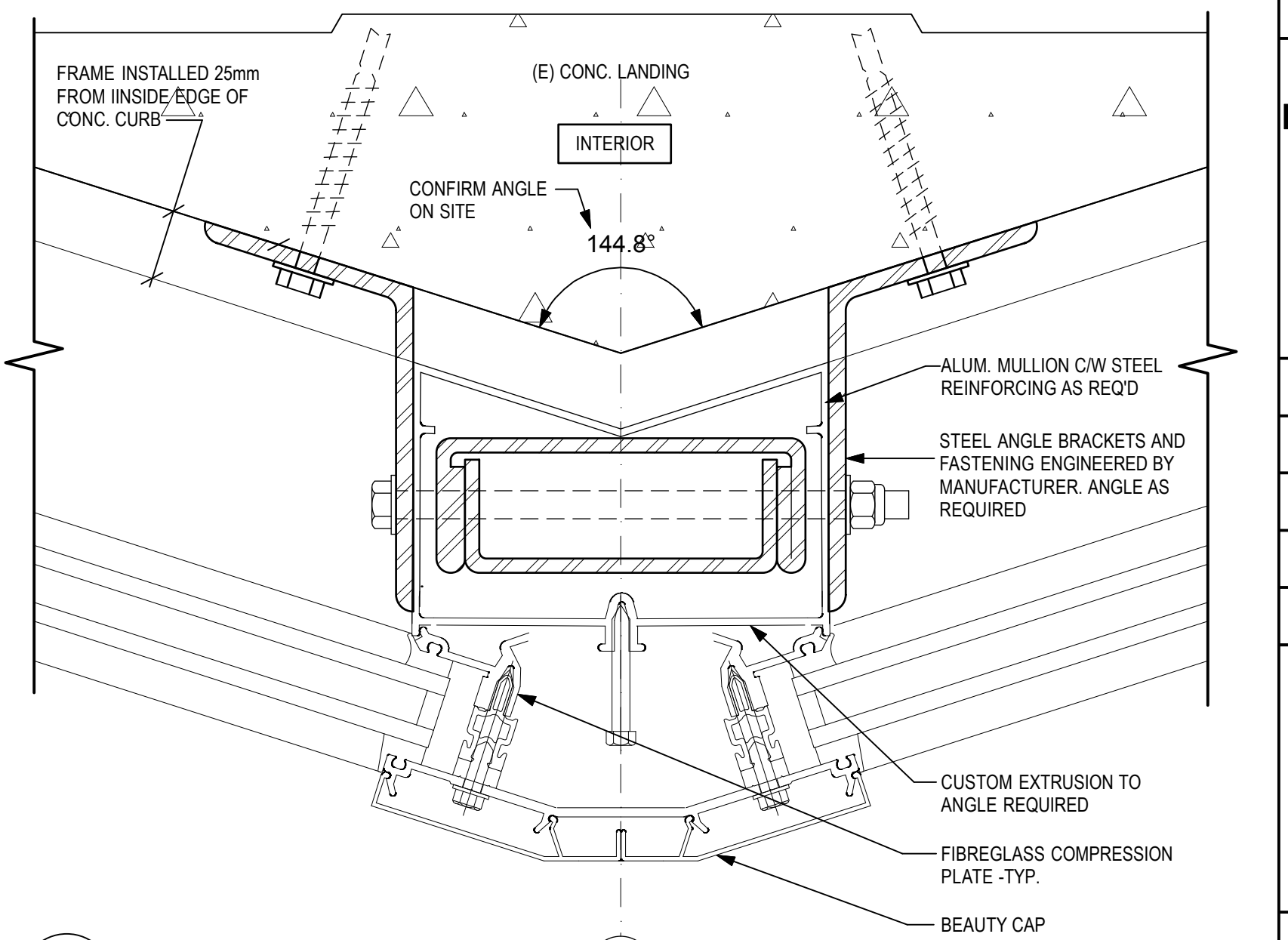
7 MULLION 'B' AT CONC. SILL
A-3 SCALE: 1:2



8 JAMB 'A' & 'C' AT LANDING
A-3 SCALE: 1:2



9 MULLION 'A' & 'C' AT LANDING
A-3 SCALE: 1:2



10 MULLION 'B' AT LANDING
A-3 SCALE: 1:2

