

3

LEGEND

RETRO FIT NEW LUMINAIRE ON EXISTING POLE

LCD FIXTURE (4 BAR)

GROUNDING CABLE REEL

LIGHTING CABLE REEL

3

PHOTOCELL

SURFACE MOUNTED JUNCTION BOX

EXISTING JUNCTION BOX

LX

LED LIGHTING ID

JBX

JUNCTION BOX ID

EJB

EXISTING JUNCTION BOX ID

SURFACE MOUNTED TECK CABLE
(ATTACHED WITH BRIDGE CLAMPS)

NEW WIRING IN EXISTING DUCT

— LC —

EXISTING LIGHTING CABLE

EXISTING BRIDGE LIGHTING

✕—✕

REMOVAL OF EXISTING BRIDGE LIGHTING CABLING

✕

REMOVAL OF EXISTING BRIDGE LIGHTING

✕

REMOVAL OF EXISTING JUNCTION BOX

RX

EQUIPMENT REMOVAL ID

SCHEDULE OF LUMINAIRES	
LUMINAIRE IDENTIFICATION	DESCRIPTION
L1	LED LUMINAIRES (4 BAR)
L2	LED LUMINAIRES (4 BAR)
L3	LED LUMINAIRES (4 BAR)
L4	LED LUMINAIRES (4 BAR)
L5	LED LUMINAIRES (4 BAR)
L6	LED LUMINAIRES (4 BAR)
L7	LED LUMINAIRES (4 BAR)
L8	LED LUMINAIRES (4 BAR)
L9	LED LUMINAIRES (4 BAR)
L10	LED LUMINAIRES (4 BAR)
L11	LED LUMINAIRES (4 BAR)
L12	LED LUMINAIRES (4 BAR)
L13	LED LUMINAIRES (4 BAR)
L14	LED LUMINAIRES (4 BAR)
L15	LED LUMINAIRES (4 BAR)
P1	250W HPS LUMINAIRE
P2	250W HPS LUMINAIRE
P3	250W HPS LUMINAIRE

AS-BUILT DRAWING

CONTRACTOR: DAYSON INDUSTRIAL SERVICES INC.

WORK COMMENCED: DECEMBER 2009

WORK COMPLETED: MARCH 2011

These As-Built Drawings have been prepared based on inspections and observations undertaken by MRC staff during key stages of construction and on information submitted, in part, by others. While this information is believed to be reliable, MRC is not responsible for its accuracy, or for errors or omissions that may have been incorporated into this drawing as a result.

SCALE
N.T.S.

Publics Works and
Government Services
Canada

Travaux publics et
services gouvernementaux
Canada

Canada

Contractor to verify all dimensions & conditions on site and immediately notify the engineer of all discrepancies.

L'entrepreneur doit vérifier les dimensions et conditions sur le site et en aviser l'ingénieur immédiatement de toute divergence.

4	AS - BUILTS	03/17/11
3	CCN #8	09/22/10
2	ISSUED FOR QUOTATION	09/03/10
1	80% DRAWINGS	08/11/10
revisions	description	date

MRC

McCORMICK RANKIN
CORPORATION

A member of

MMMGROUP

project

projet

Burlington Lift Bridge

drawing

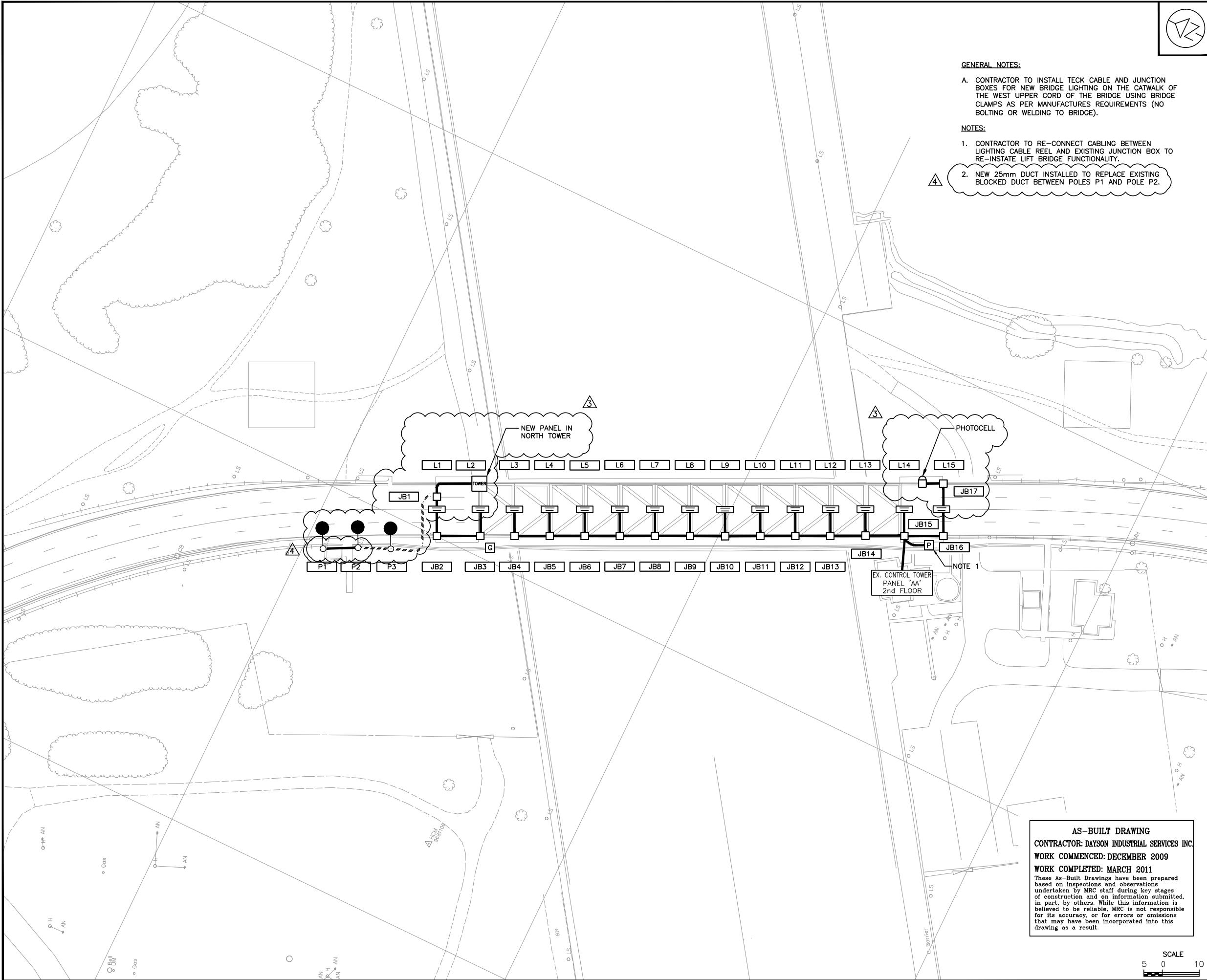
dessin

SCHEDULE CHART
AND LEGEND

Designed By	D.P.M	Conçu par
Date		(yyyy/mm/dd)
Drawn By	D. MALLARI	Dessiné par
Date		(yyyy/mm/dd)
Reviewed By	D.P.M.	Examiné par
Date		(yyyy/mm/dd)
Approved By		Approuvé par
Date	AUGUST 2010	(yyyy/mm/dd)
Tender		Soumission
Project Manager		Administrateur de projets
Project no.	107732	No. du projet
Drawing no.	E1	No. du dessin

PWGSC A1 (841x594)

FILE LOCATION: S:\DATA\76\7732-200 CLEANING AND COATING OF BURLINGTON LIFT BRIDGE CAN RELOCATION OF ELECTRICAL
DRAWING NAME: E2-RCE-E7732-NOT DWG
DRAWN BY: D. MALLARI
MODIFIED: 13/04/29 13:30:18
Revised



GENERAL NOTES:

A. CONTRACTOR TO INSTALL TECK CABLE AND JUNCTION BOXES FOR NEW BRIDGE LIGHTING ON THE CATWALK OF THE WEST UPPER CORD OF THE BRIDGE USING BRIDGE CLAMPS AS PER MANUFACTURES REQUIREMENTS (NO BOLTING OR WELDING TO BRIDGE).

NOTES:

1. CONTRACTOR TO RE-CONNECT CABLING BETWEEN LIGHTING CABLE REEL AND EXISTING JUNCTION BOX TO RE-INSTATE LIFT BRIDGE FUNCTIONALITY.
2. NEW 25mm DUCT INSTALLED TO REPLACE EXISTING BLOCKED DUCT BETWEEN POLES P1 AND POLE P2.



Canada

Contractor to verify all dimensions & conditions on site and immediately notify the engineer of all discrepancies.

L'entrepreneur doit vérifier les dimensions et conditions sur le site et en aviser l'ingénieur immédiatement de toute divergence.

revisions	description	date
4	AS - BUILTS	03/17/11
3	CCN #8	09/22/10
2	ISSUED FOR QUOTATION	09/03/10
1	80% DRAWINGS	08/11/10



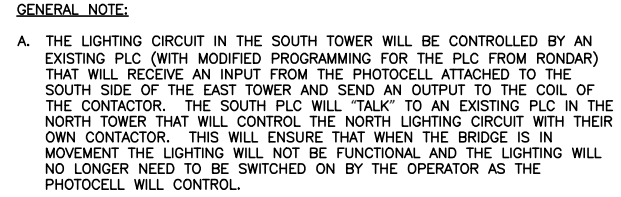
project
Burlington Lift Bridge

drawing
ELECTRICAL LAYOUT

Designed By	D.P.M.	Conçu par
Date		(yyyy/mm/dd)
Drawn By	D. MALLARI	Dessiné par
Date		(yyyy/mm/dd)
Reviewed By	D.P.M.	Examiné par
Date		(yyyy/mm/dd)
Approved By		Approuvé par
Date	AUGUST 2010	(yyyy/mm/dd)
Tender		Soumission
Project Manager	Administrateur de projets	
Project no.	107732	No. du projet
Drawing no.	E2	No. du dessin

AS-BUILT DRAWING
CONTRACTOR: DAYSON INDUSTRIAL SERVICES INC.
WORK COMMENCED: DECEMBER 2009
WORK COMPLETED: MARCH 2011
These As-Built Drawings have been prepared based on inspections and observations undertaken by MRC staff during key stages of construction and on information submitted, in part, by others. While this information is believed to be reliable, MRC is not responsible for its accuracy, or for errors or omissions that may have been incorporated into this drawing as a result.

SCALE
5 0 10



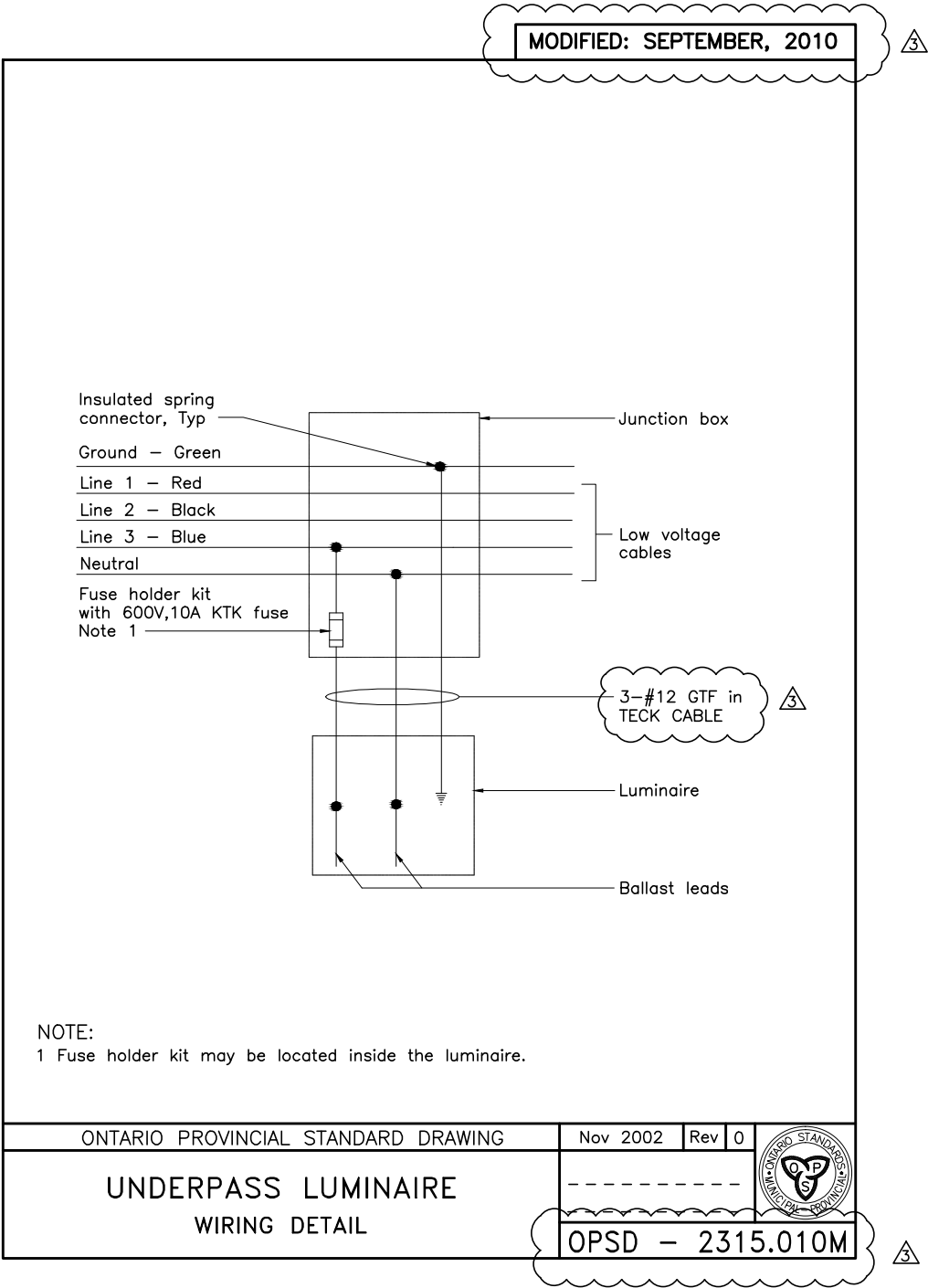
4	AS - BUILTS	03/17/11
3	CCN #8	09/22/10
2	ISSUED FOR QUOTATION	09/03/10
1	80% DRAWINGS	08/11/10
revisions	description	date



Designed By	D.P.M	Conçu par
Date		(yyyy/mm/dd)
Drawn By	D. MALLARI	Dessiné par
Date		(yyyy/mm/dd)
Reviewed By	D.P.M.	Examiné par
Date		(yyyy/mm/dd)
Approved By		Approuvé par
Date	AUGUST 2010	(yyyy/mm/dd)
Tender		Soumission
Project Manager	Administrateur de projets	
Project no.	107732	No. du projet
Drawing no.	E3	No, du dessin

PWGSC A1 (841x594)

FILE LOCATION: S:\DATA\7K\7732-200 CLEANING AND COATING OF BURLINGTON LIFT BRIDGE CA\RELOCATION OF ELECTRICAL\ DRAWING NAME: E4-ROE-E7732-D01.DWG REVISION BY: K.GILL
DRAWN BY: D. MALLARI MODIFIED: 13/04/29 13:57:49 Revised



AS-BUILT DRAWING
CONTRACTOR: DAYSON INDUSTRIAL SERVICES INC.
WORK COMMENCED: DECEMBER 2009
WORK COMPLETED: MARCH 2011
These As-Built Drawings have been prepared based on inspections and observations undertaken by MRC staff during key stages of construction and on information submitted, in part, by others. While this information is believed to be reliable, MRC is not responsible for its accuracy, or for errors or omissions that may have been incorporated into this drawing as a result.

SCALE
N.T.S.

Contractor to verify all dimensions & conditions on site and immediately notify the engineer of all discrepancies.

L'entrepreneur doit vérifier les dimensions et conditions sur le site et en aviser l'ingénieur immédiatement de toute divergence.

4	AS - BUILTS	03/17/11
3	CCN #8	09/22/10
2	ISSUED FOR QUOTATION	09/03/10
1	80% DRAWINGS	08/11/10
revisions	description	date



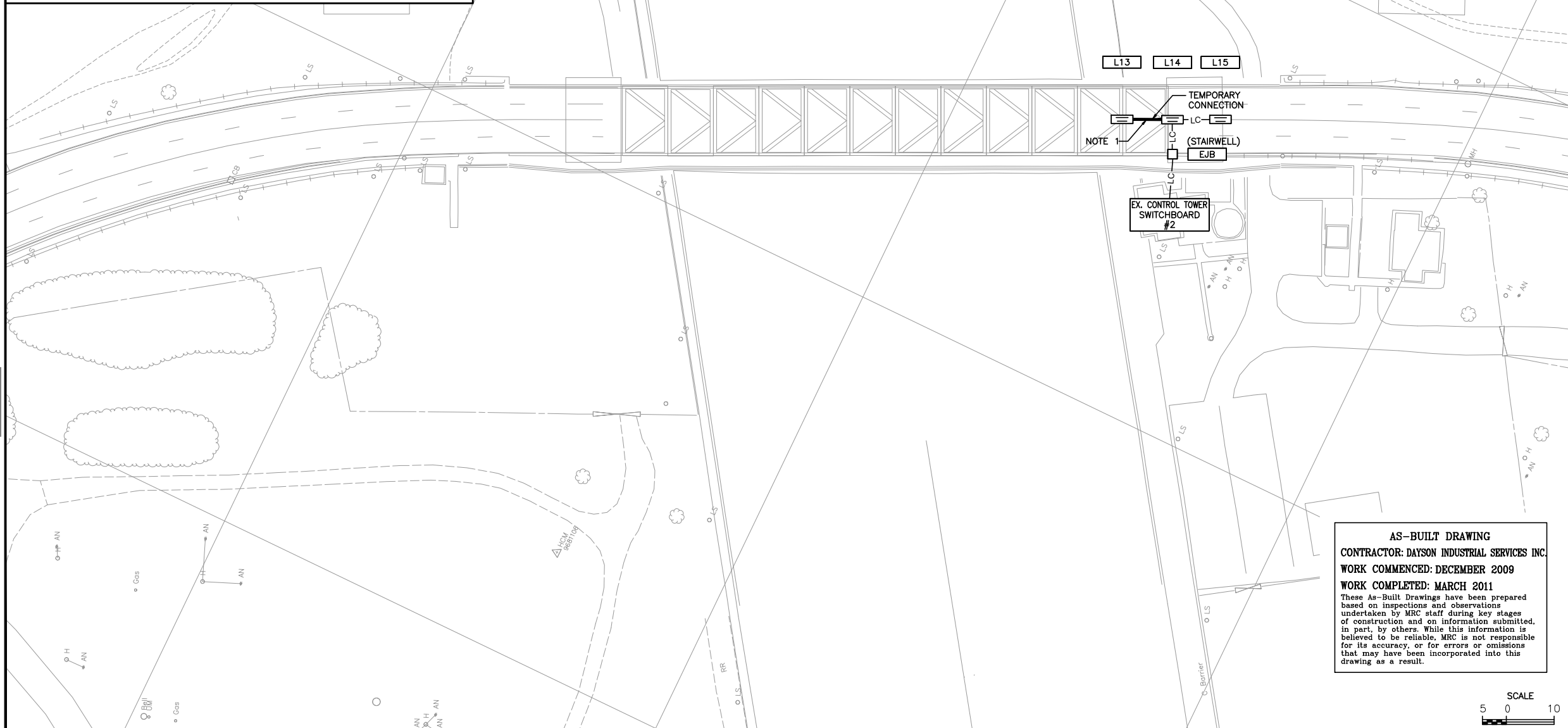
project projet

Burlington Lift Bridge

drawing dessin

DETAIL

Designed By	D.P.M.	Conçu par
Date		(yyyy/mm/dd)
Drawn By	D. MALLARI	Dessiné par
Date		(yyyy/mm/dd)
Reviewed By	D.P.M.	Examiné par
Date		(yyyy/mm/dd)
Approved By		Approuvé par
Date	AUGUST 2010	(yyyy/mm/dd)
Tender		Soumission
Project Manager		Administrateur de projets
Project no.	107732	No. du projet
Drawing no.	E4	No. du dessin



1. CONTRACTOR TO SPLICE EXISTING CIRCUIT AT LUMINAIRE L13 AND RUN TEMPORARY CABLING INSIDE TECK CABLE BETWEEN LUMINAIRES L13 AND L14. THIS WILL CONTINUE THE CIRCUIT FOR THE EXISTING LIGHTING AND ENSURE THAT THE EQUIPMENT BELOW (LIGHTING CABLE REEL AND ASSOCIATED JUNCTION BOX) CAN BE REMOVED AND THE TEMPORARY LIGHTING WILL STAY ACTIVE. CONTRACTOR TO ENSURE THAT DURING THE REMOVAL OF EXISTING LIGHTING THAT ALL LIGHTING LEVELS ARE MAINTAINED TO A MINIMUM STANDARD OF THE EXISTING CONDITIONS.



L'entrepreneur doit vérifier les dimensions et conditions sur le site et en aviser l'ingénieur immédiatement de toute divergence.

3	AS - BUILTS	03/17/1
2	ISSUED FOR QUOTATION	09/03/1
1	80% DRAWINGS	08/11/1
revisions	description	date



Burlington Lift Bridge


ELECTRICAL LAYOUT

Drawing No. **55** NO. du dessin

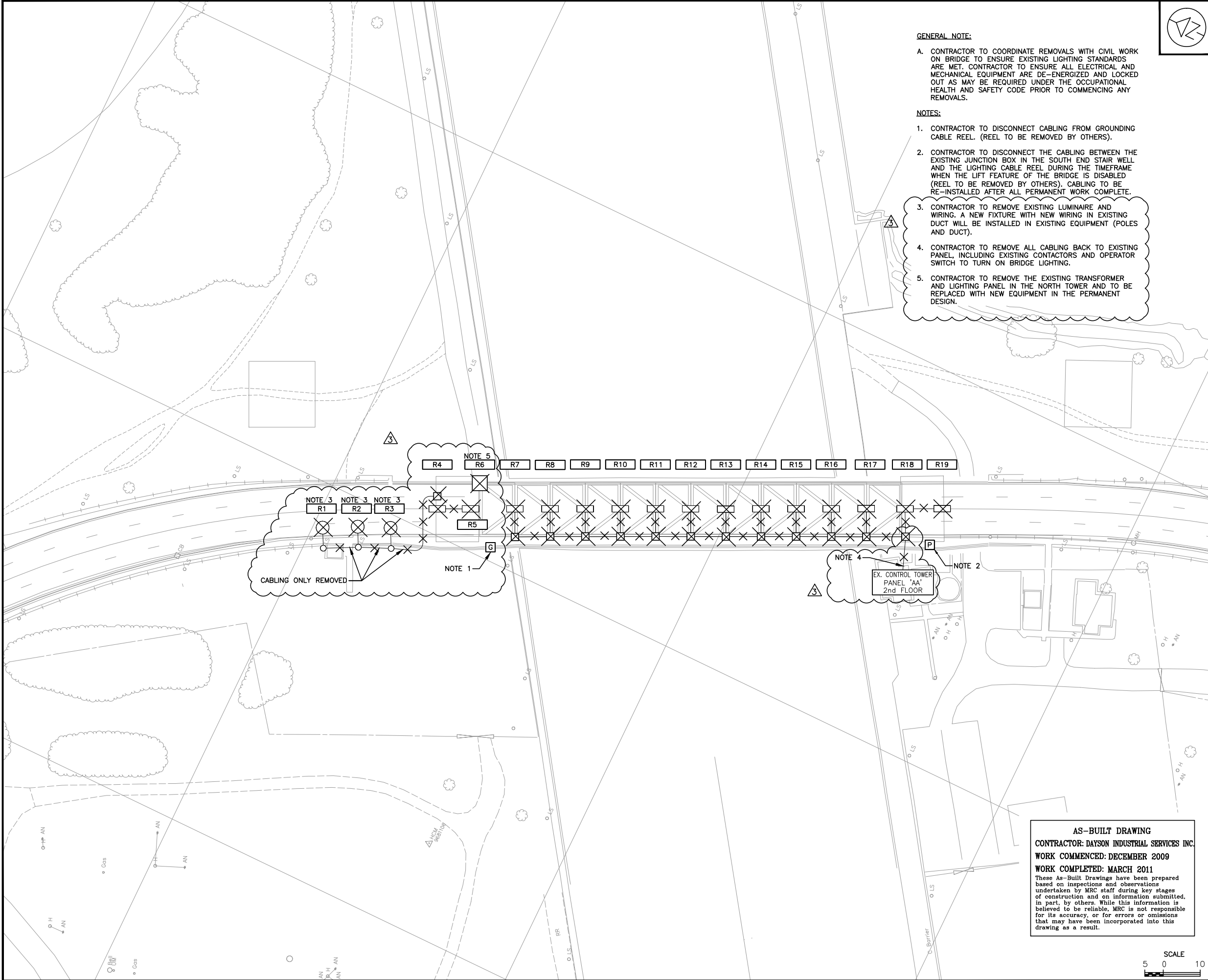
AS-BUILT DRAWING
CONTRACTOR: DAYSON INDUSTRIAL SERVICES INC
WORK COMMENCED: DECEMBER 2009
WORK COMPLETED: MARCH 2011
These As-Built Drawings have been prepared based on inspections and observations undertaken by MRC staff during key stages of construction and on information submitted, in part, by others. While this information is believed to be reliable, MRC is not responsible for its accuracy, or for errors or omissions that may have been incorporated into this drawing as a result.

SCALE

5 0 10



FILE LOCATION: S:\DATA\7A\7732-200 CLEANING AND COATING OF BURLINGTON LIFT BRIDGE CAN RELOCATION OF ELECTRICAL
DRAWING NAME: EA-R02-E7732-R01.DWG
DRAWN BY: D. MALLARI
MODIFIED: 13/04/29 13:59:09
REVISED BY: K.GILL
Refined



Contractor to verify all dimensions & conditions on site and immediately notify the engineer of all discrepancies.

L'entrepreneur doit vérifier les dimensions et conditions sur le site et en aviser l'ingénieur immédiatement de toute divergence.

revisions	description	date
4	AS - BUILTS	03/17/11
3	CCN #8	09/22/10
2	ISSUED FOR QUOTATION	09/03/10
1	80% DRAWINGS	08/11/10



project
Burlington Lift Bridge

drawing
REMOVALS

Designed By	D.P.M.	Conçu par
Date		(yyyy/mm/dd)
Drawn By	D. MALLARI	Dessiné par
Date		(yyyy/mm/dd)
Reviewed By	D.P.M.	Examiné par
Date		(yyyy/mm/dd)
Approved By		Approuvé par
Date	AUGUST 2010	(yyyy/mm/dd)
Tender		Soumission
Project Manager		Administrateur de projets
Project no.	107732	No. du projet
Drawing no.	E6	No. du dessin