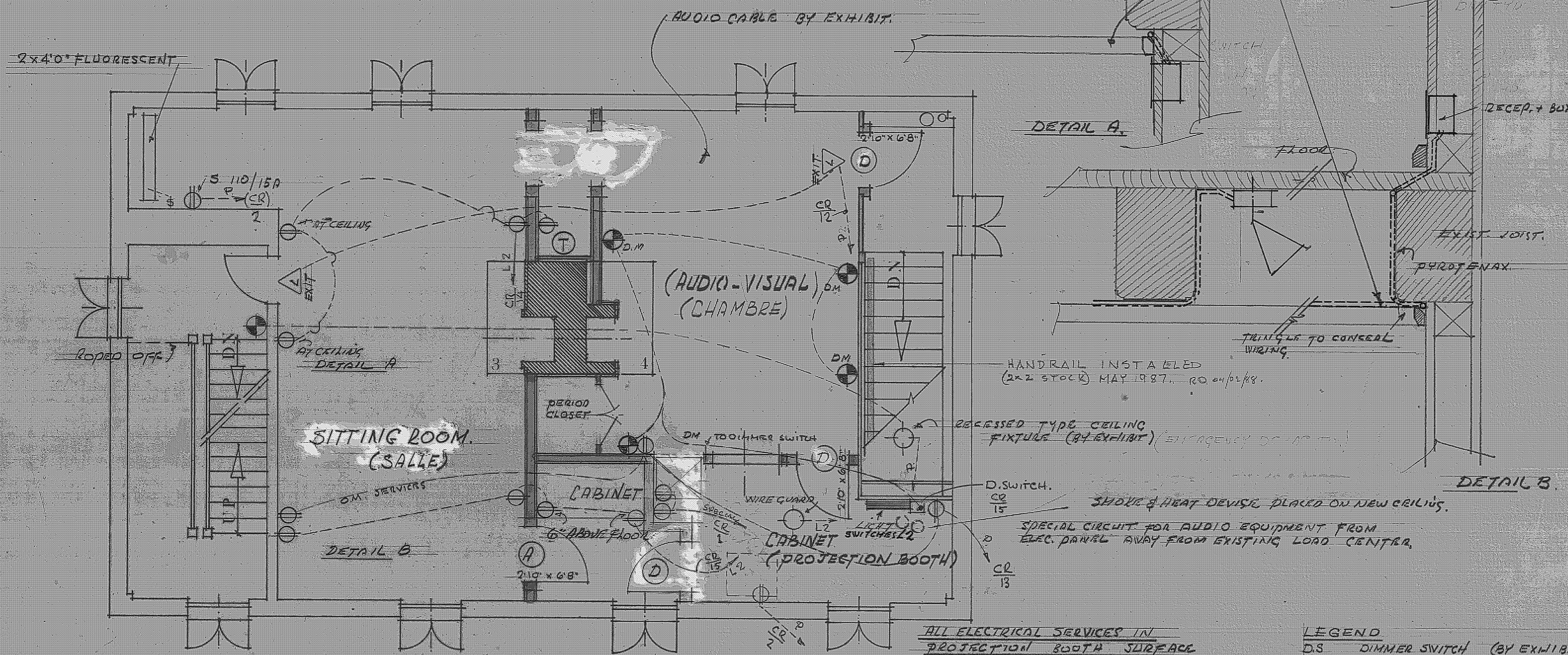


NOTE ON WIRING:
 ① WIRING IN ATTIC FLOOR TO BE KEPT AS CLOSE AS POSSIBLE TO EDGE.
 ② ALL WIRING WHICH CANNOT BE COMPLETELY CONCEALED IN NEW PARTITION SHALL RUN ALONG JOIST AT CEILING TO NEAREST WALL THEN DOWN INTO TOP OF CROWN MOULDING (TRIANGLE) SET 3/8" UNDER JOISTS



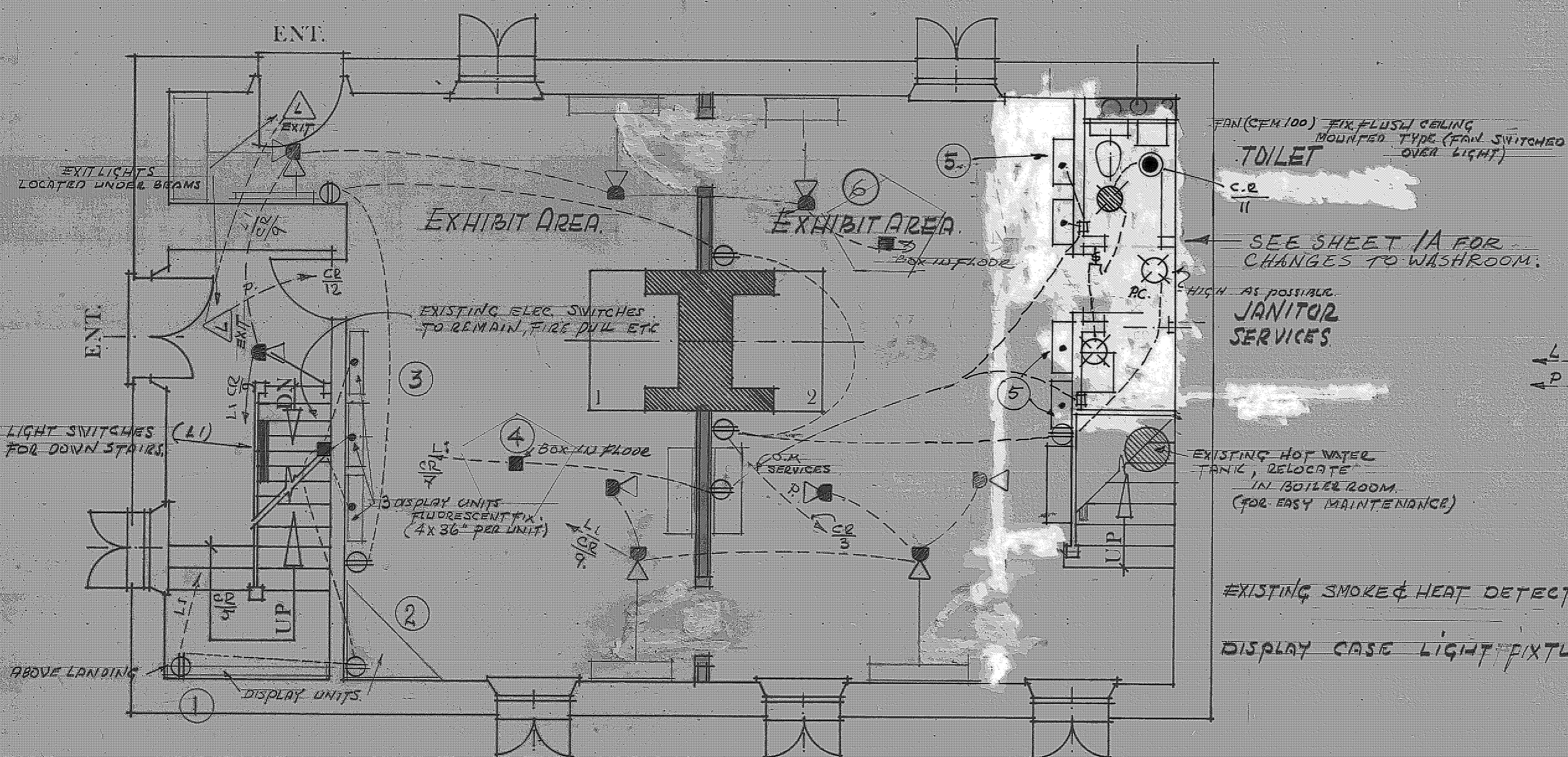
1	2
3	4 BASEMENT RECEPTACLE
5	6 FURNACE
7	8 LIGHT BATHROOM
9	10 BASEMENT RECEPTACLE
11	12
13	14
15	16
17	18 FIBRE DRAIN
19	HOT WATER

DUHAGET ELECTRICAL SERVICE

FORTRESS OF LOUISBOURG NATIONAL HISTORIC PARK

RECOMMENDED
 H. J. J. RESTORATION ARCHITECT
 APPROVED & RECOMMENDED Dec. 20/77
 APPROVED & RECOMMENDED
 CHECKED FOR HISTORICAL ACCURACY

J.J.S.



- LEGEND**
- DS DIMMER SWITCH (BY EXHIBIT)
 - SCONES (C.S.A. APP. FIXTURE) (BY EXHIBIT)
 - LAMPS CONTROLLED BY DIMMER SWITCH (PROVIDE 2 (5'4" ABOVE FLOOR))
 - OM WIRE CABLE FOR OPTIONAL ELECTRONIC FADE
 - DUPLX RECEPTACLE SET JUST ABOVE BASE MOULDING UNLESS NOTED ON PLAN
 - CEILING TYPE (FLUSH MOUNTED) LIGHT FIXTURE (BATH ROOM TYPE)
 - CEILING LAMP HOLDER (PORCELAIN) OR SIDE WALL MOUNTED
 - MALL BRACKET TYPE LIGHT FIXTURE (PC-PULL CHAIN OR SWITCH TYPE)
 - EXIT LIGHT/DUAL EMERGENCY LIGHTING (BY EXHIBIT)
 - FLUORESCENT LIGHT FIXTURE (RAPID-START)
 - CEILING MOUNTED SPOTLIGHTS (BY EXHIBIT) (75 WATT EACH)
 - MOTOR (FAN CFM 100)
 - SPECIAL CIRCUIT 110/15AMP
 - DOUBLE GANG (S.P. SWITCH)
 - S.P. SWITCH
 - PHONE CONNECTION

DISPLAY CASES

No:	DISPLAY CASES
1	6 FLUORESCENT TUBES 48" LONG
2	2 FLUORESCENT 24" L + 1 FLU 18" L
3	12 FLUORESCENT TUBES 48" LONG
4	10 FLUORESCENT TUBES 18" LONG
5	20 INCAND. BULBS 10W EACH
6	10 FLUORESCENT 24" L + 3-8" CIR FLUORESCENT

NOTE: ALL WIRING TO BE PYROTEX. ALL ELECTRICAL WORK CARRIED OUT IN ACCORDANCE TO THE ELECTRICAL CODE, (C.S.A. STANDARD C-22, 1975)

EXISTING SMOKE & HEAT DETECTION DEVICES TO REMAIN (UNLESS NOTED ON PLANS)
 DISPLAY CASE LIGHT FIXTURES (BY EXHIBIT)

DUHAGET HOUSE
 LOT "C"
 BLOCK 17

ELECTRICAL PLAN