

RETURN BIDS TO:
RETOURNER LES SOUMISSIONS À:
Bid Receiving Public Works and Government
Services Canada/Réception des soumissions Travaux
publics et Services gouvernementaux Canada
Pacific Region
800 Burrard Street, 2nd Floor
800, rue Burrard, 2e étage
Vancouver, B. C.
V6Z 0B9
Bid Fax: (604) 775-7526

Revision to a Request for a Standing Offer

Révision à une demande d'offre à commandes

Regional Individual Standing Offer (RISO)

Offre à commandes individuelle régionale (OCIR)

The referenced document is hereby revised; unless
otherwise indicated, all other terms and conditions of the
Offer remain the same.

Ce document est par la présente révisé; sauf indication
contraire, les modalités de l'offre demeurent les mêmes.

Comments - Commentaires

Vendor/Firm Name and Address

Raison sociale et adresse du
fournisseur/de l'entrepreneur

Issuing Office - Bureau de distribution

Public Works and Government Services Canada -
Pacific Region
800 Burrard Street, 12th Floor
800, rue Burrard, 12e étage
Vancouver, BC V6Z 0B9

Title - Sujet Aluminum Fabrication SO		
Solicitation No. - N° de l'invitation F1700-130429/B		Date 2013-11-20
Client Reference No. - N° de référence du client F1700-130429		Amendment No. - N° modif. 003
File No. - N° de dossier XSB-3-36144 (005)	CCC No./N° CCC - FMS No./N° VME	
GETS Reference No. - N° de référence de SEAG PW-\$XSB-005-7115		
Date of Original Request for Standing Offer Date de la demande de l'offre à commandes originale		2013-10-24
Solicitation Closes - L'invitation prend fin at - à 02:00 PM on - le 2013-12-04		Time Zone Fuseau horaire Pacific Daylight Saving Time PDT
Address Enquiries to: - Adresser toutes questions à: Armstrong, Wendy		Buyer Id - Id de l'acheteur xsb005
Telephone No. - N° de téléphone (604) 775-7691 ()		FAX No. - N° de FAX (604) 775-7526
Delivery Required - Livraison exigée		
Destination - of Goods, Services, and Construction: Destination - des biens, services et construction:		
Security - Sécurité This revision does not change the security requirements of the Offer. Cette révision ne change pas les besoins en matière de sécurité de la présente offre.		

Instructions: See Herein

Instructions: Voir aux présentes

Acknowledgement copy required Accusé de réception requis	Yes - Oui <input type="checkbox"/>	No - Non <input type="checkbox"/>
The Offeror hereby acknowledges this revision to its Offer. Le proposant constate, par la présente, cette révision à son offre.		
Signature	Date	
Name and title of person authorized to sign on behalf of offeror. (type or print) Nom et titre de la personne autorisée à signer au nom du proposant. (taper ou écrire en caractères d'imprimerie)		
For the Minister - Pour le Ministre		

AMENDEMENT n° 3 Le présent amendement est apporté pour répondre à des questions soumises par un fournisseur.

Question :

Je veux juste m'assurer qu'il y a deux séries d'escaliers par bâtiment. Pouvez-vous le confirmer?

Réponse :

Voir les nouveaux dessins.

Question :

Notre entreprise est en mesure de fournir toutes les unités spécifiées en aluminium extrudé. Si nous sommes capables de fournir des unités en aluminium extrudé approuvées par un ingénieur, est-ce que cela sera acceptable pour l'offre?

Réponse :

Le MPO n'acceptera aucune offre pour des unités en aluminium extrudé.

Sous Sommaire

Ajouter : Fourniture et construction de trente-six (36) marches extérieures

Sous Annexe A Description générale

Ajouter : Fourniture et construction de trente-six (36) marches extérieures

Sous Dessins

Supprimer : Dans son intégralité

Insérer : Dessins annexés

Under Annexe « B » BASE DE PAIEMENT

Add: Item 4

	Description	Unité de mesure	Quantité	Prix unitaire	Coût
1	Fabriquer et fournir des châssis de bâtiment modulaire à deux unités	chaque	8		
2	Fabriquer et fournir des châssis de bâtiment modulaire à quatre unités	chaque	8		
3	Fabriquer et fournir des châssis de bâtiment modulaire à six unités	chaque	12		
4.	Fourniture et construction de	chaque	36		

Solicitation No. - N° de l'invitation

F1700-130429/B

Amd. No. - N° de la modif.

003

Buyer ID - Id de l'acheteur

xsb005

Client Ref. No. - N° de réf. du client

F1700-130429

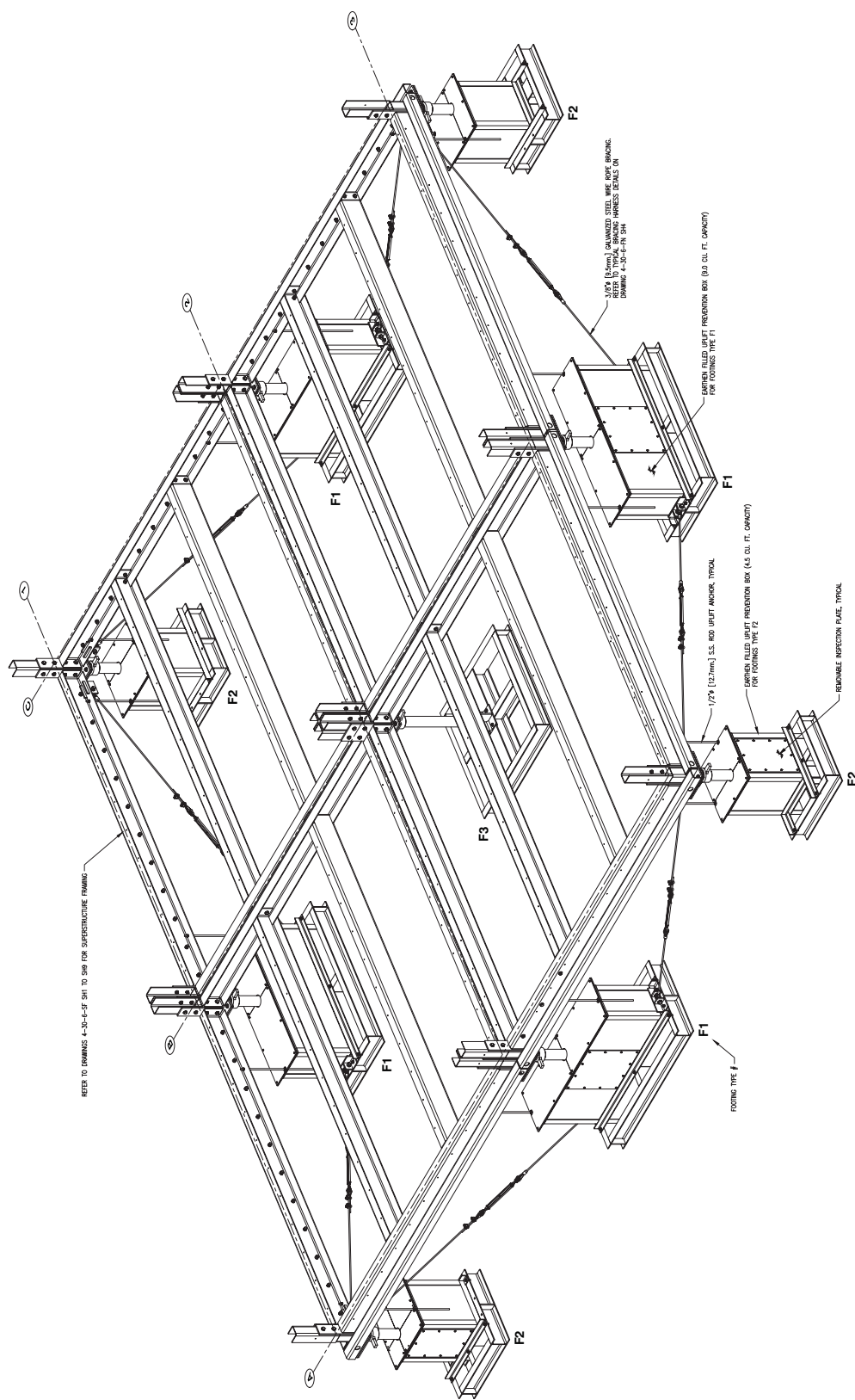
File No. - N° du dossier

XSB-3-36144

CCC No./N° CCC - FMS No/ N° VME

	trente-six (36) marches extérieures				
TOTAL					

Toutes les autres conditions demeurent inchangées.



1/8"Ø [9.5mm.] GALVANIZED STEEL WIRE ROPE BRACING.
REFER TO TYPICAL BRACING HARNESS DETAILS ON
DRAWING 4-30-6-FN SH4

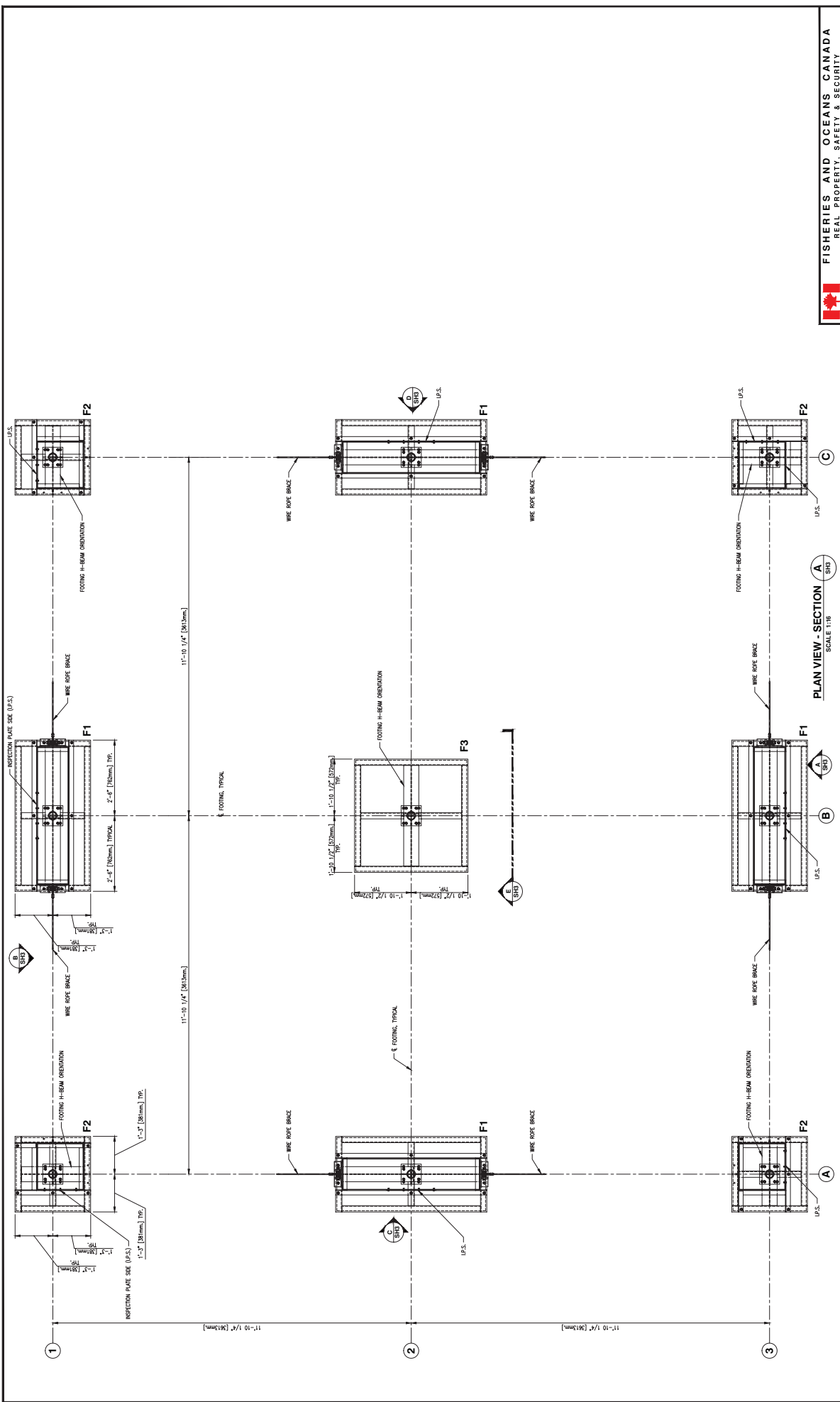
EARTHEN FILLED UPLIFT PREVENTION BOX (9.0 CU. FT. CAPACITY)

WARTHEN FILLED UPLIFT PREVENTION BOX (4.5 CU. FT. CAPACITY)
DO NOT CONTAIN THESE ITEMS


WARTHEN FILLED UPLIFT PREVENTION BOX (4.5 CU. FT. CAPACITY)
DO NOT CONTAIN THESE ITEMS

REMOVABLE INSPECTION PLATE, TYPICAL

COATING TYPE /



DWG. NO.	DRAWING REFERENCES	NOTES	REVISIONS		NO.	DATE	APPROVED	DESIGNED M. Liang	DRAWN C. Chen	CHECKED C. Chen	RECOMMENDED C. Chen	DATE OCT. 24, 2013	DWG. NUMBER 4-30-6-FN	SHEET 10	REVISION D
<p>FOR TENDER ONLY. NOT FOR CONSTRUCTION.</p>															
<p>1. FOR GENERAL NOTES, LEGEND AND DRAWING INDEX REFER TO DRAWING 4-30-6-FN SH.</p>															

**FISHERIES AND OCEANS CANADA**
REAL PROPERTY, SAFETY & SECURITY

PREFABRICATED BUILDING
MODEL 24X24-S1
ALUMINUM FOUNDATION
FOOTING LAYOUT

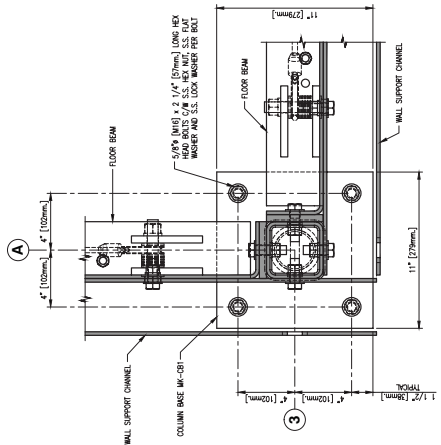
SCALE
1:16

DATE
OCT. 24, 2013

DWG. NUMBER
4-30-6-FN

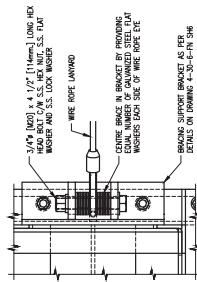
SHEET
10

REVISION
D



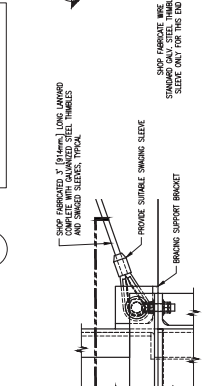
SECTION A
SCALE 1:4

(TYPICAL SHORE CAP PLATE CONNECTION TO SHS UNDERSIDE COLUMN BASE FOR TYPE F3 FOOTING)



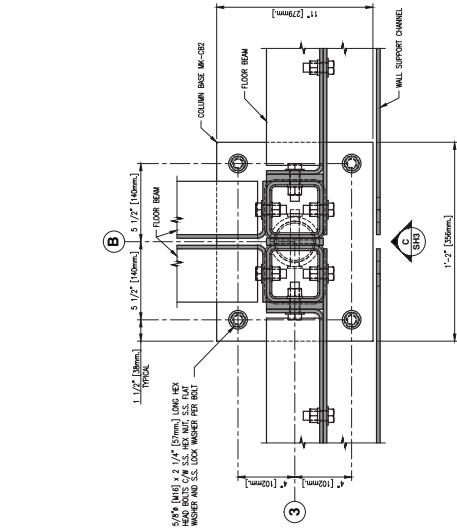
SECTION B
SCALE 1:4

(TYPICAL SHORE CAP PLATE CONNECTION TO SHS UNDERSIDE COLUMN BASE FOR TYPE F1 FOOTING)



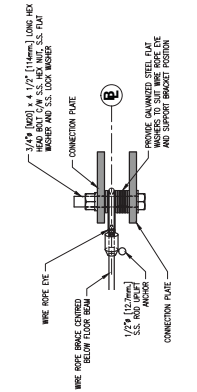
SECTION C
SCALE 1:4

(TYPICAL SHORE CAP PLATE CONNECTION TO SHS UNDERSIDE COLUMN BASE FOR TYPE F2 FOOTING)



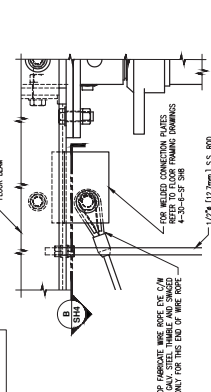
SECTION A
SCALE 1:4

(TYPICAL SHORE CAP PLATE CONNECTION TO SHS UNDERSIDE COLUMN BASE FOR TYPE F1 FOOTING)



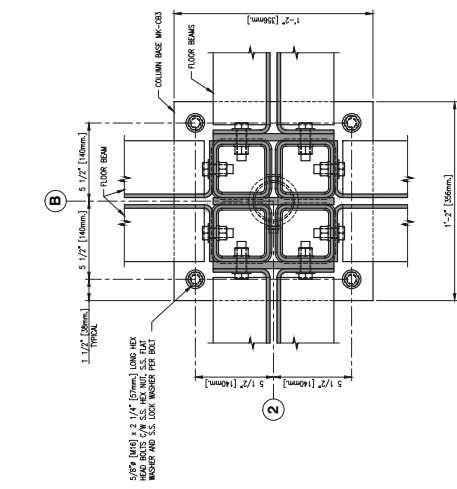
SECTION B
SCALE 1:4

(TYPICAL SHORE CAP PLATE CONNECTION TO SHS UNDERSIDE COLUMN BASE FOR TYPE F1 FOOTING)



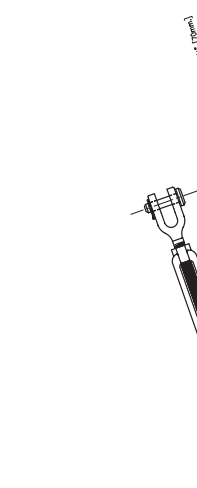
SECTION C
SCALE 1:4

(TYPICAL SHORE CAP PLATE CONNECTION TO SHS UNDERSIDE COLUMN BASE FOR TYPE F2 FOOTING)



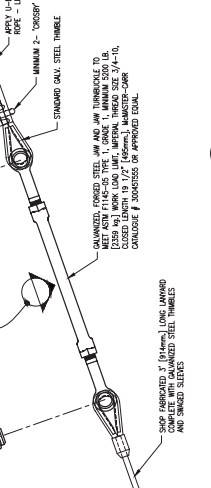
SECTION A
SCALE 1:4

(TYPICAL SHORE CAP PLATE CONNECTION TO SHS UNDERSIDE COLUMN BASE FOR TYPE F3 FOOTING)



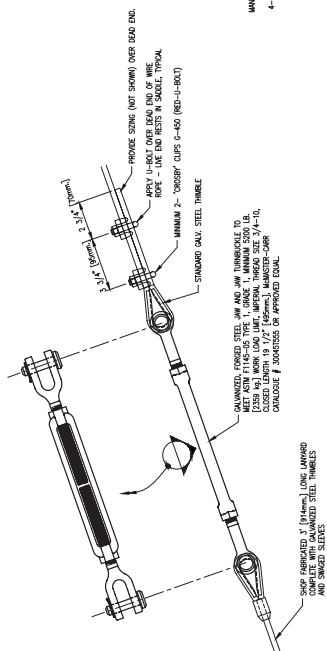
SECTION B
SCALE 1:4

(TYPICAL SHORE CAP PLATE CONNECTION TO SHS UNDERSIDE COLUMN BASE FOR TYPE F1 FOOTING)



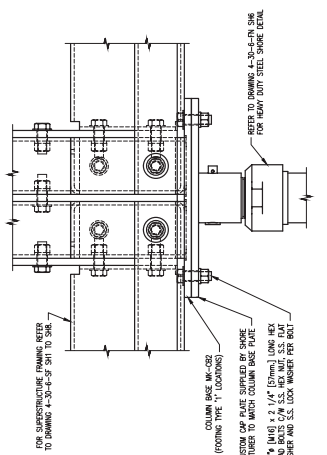
SECTION C
SCALE 1:4

(TYPICAL SHORE CAP PLATE CONNECTION TO SHS UNDERSIDE COLUMN BASE FOR TYPE F2 FOOTING)



DETAIL 1
SCALE 1:4

(TYPICAL SHORE CAP PLATE CONNECTION TO SHS UNDERSIDE COLUMN BASE FOR TYPE F1 FOOTING)



DETAIL 2
SCALE 1:4

(TYPICAL SHORE CAP PLATE CONNECTION TO SHS UNDERSIDE COLUMN BASE FOR TYPE F2 FOOTING)

FOR TENDER ONLY.
NOT FOR CONSTRUCTION.

1. FOR GENERAL NOTES, LEGEND AND DRAWING INDEX REFER TO DRAWING 4-30-6-F-1.

DWG. NO. DRAWING REFERENCES

NOTES

NO. DATE

REVISIONS

APPROVED

RECOMMENDED

CHECKED

DESIGNED

DRAWN

SCALE

AS NOTED

DATE

OCT. 24, 2013

DWG. NUMBER

4-30-6-FN

SHEET

10

SIZE

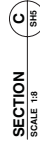
D

REVISION

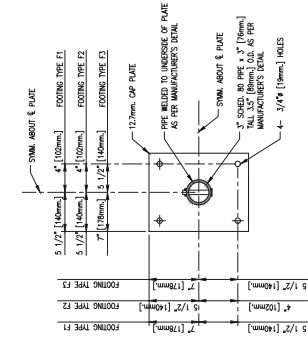
Δ

FISHERIES AND OCEANS CANADA
REAL PROPERTY, SAFETY & SECURITY

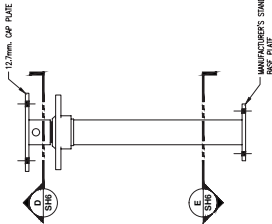
PREFABRICATED BUILDING
MODEL 24X24-S1
ALUMINUM FOUNDATION
FOOTING AND BRACING
CONNECTION DETAILS



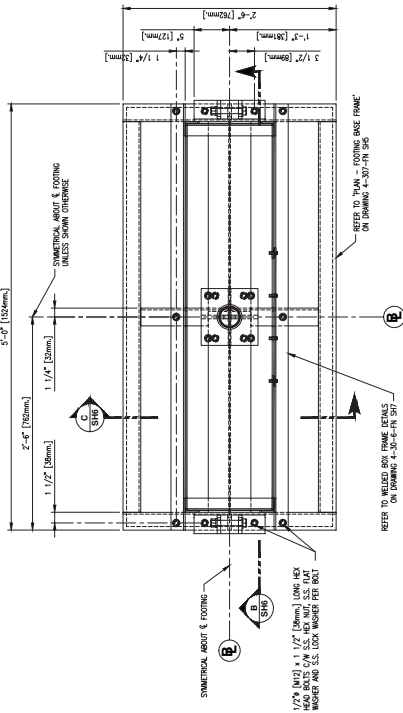
ALL STEEL SHORES SHALL BE:
HEAVY DUTY MODEL F S1-S180 WITH CUSTOM CAP PLATE,
LOAD CAPACITY 140,000 LBS. [63,444 kg], 5" [127mm]
TALL MANUFACTURER'S STANDARD SHORE
MANUFACTURED BY:
ALCO MANUFACTURING CO., INC.
400 W. COVINGTON AVE.,
OKLAHOMA CITY, OK 73118
(DISTRIBUTION SHALL BE CONSIDERED AND ARE SUBJECT TO
MANUFACTURER'S STANDARD SHORE)
THE SHORES SHALL BE SUPPLIED WITH CUSTOMIZED TOP
PLATE TO MATCH COLUMN BASEL.
PHONE: (405) 258-4071
TOLL FREE: 800-864-8311
FAX: (405) 258-4796



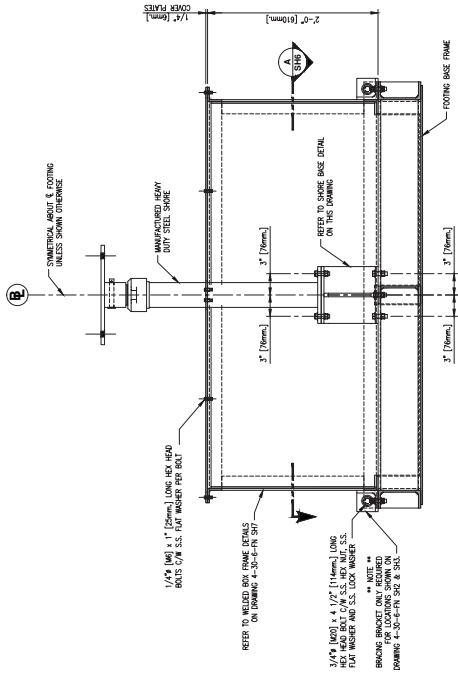
SECTION D
SCALE 1:8



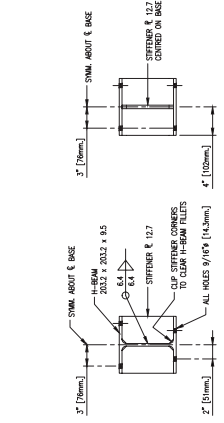
SECTION E
SCALE 1:8



PLAN VIEW - SECTION A
SCALE 1:8

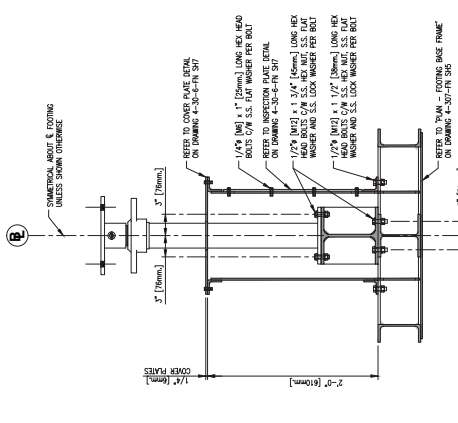


SECTION B
SCALE 1:8



END VIEW
SHORE BASE
SCALE 1:8

(USED FOR ALL FOOTING TYPES)



SECTION C
SCALE 1:8

FOOTING TYPE F1 - ASSEMBLY SECTIONS

1. FOR GENERAL NOTES, LEGEND AND DRAWING INDEX REFER TO DRAWING 4-30-6-FP SH1.

FOR TENDER ONLY.
NOT FOR CONSTRUCTION.

DWG. NO. DRAWING REFERENCES

NOTES

REVISIONS

NO. DATE USED ONLY FOR ENGINEERING PURPOSES, NOT FOR CONSTRUCTION.

APPROVED

DESIGNED BY: M. Liang

CHECKED BY: M. Liang

RECOMMENDED BY: M. Liang

DATE: OCT. 24, 2013

DWG. NUMBER: 4-30-6-FN

SHEET: 10

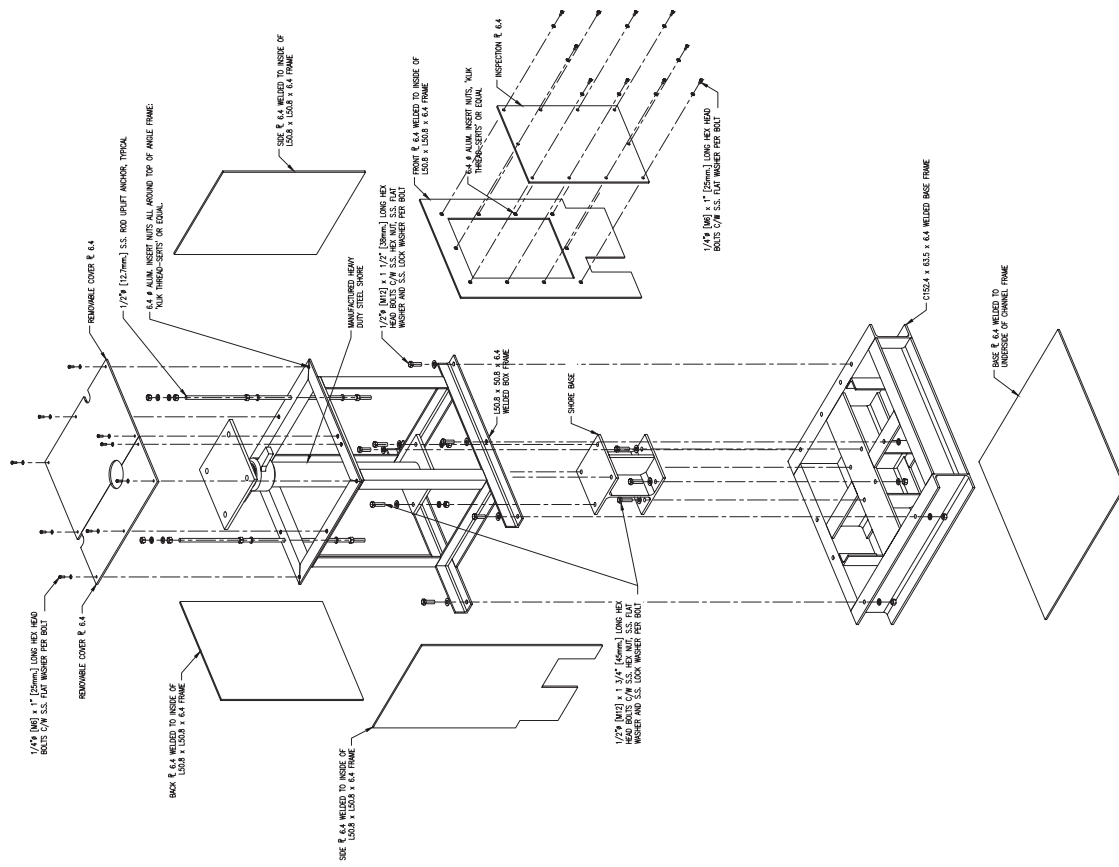
PROJECT: ALUMINUM FOUNDATION

MODEL: 24X24-S1

PREFABRICATED BUILDING

REAL PROPERTY, SAFETY & SECURITY

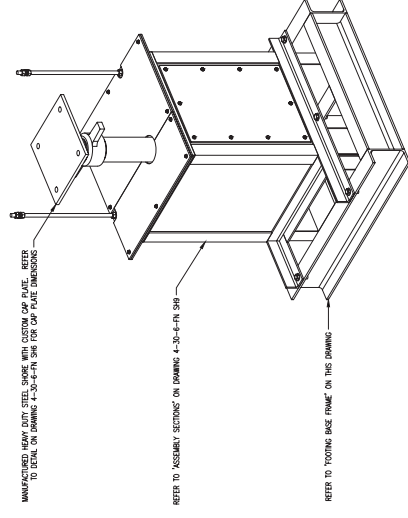
FISHERIES AND OCEANS CANADA



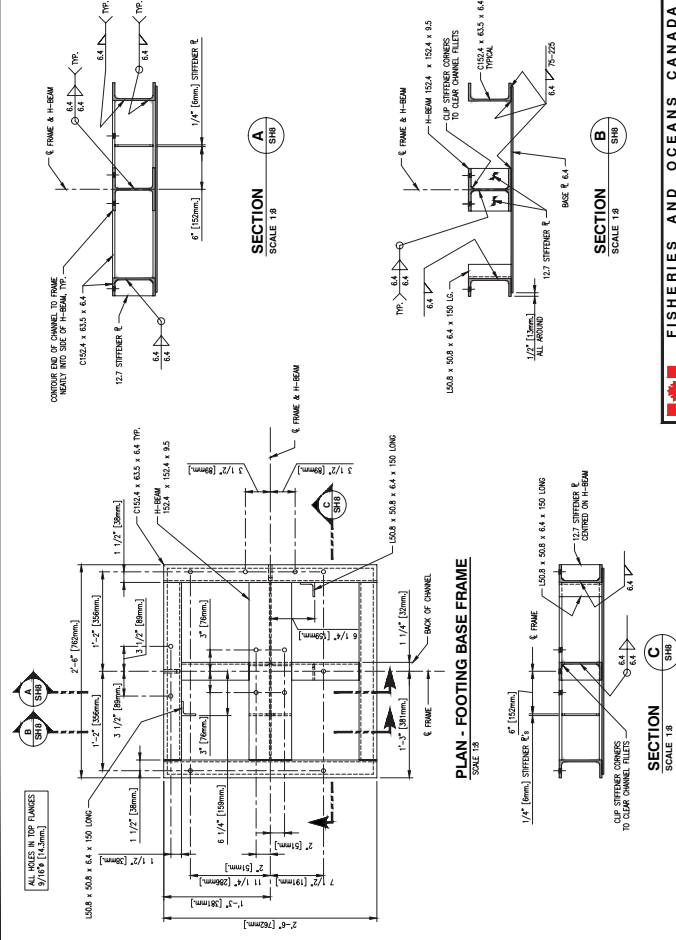
3D EXPLODED ASSEMBLY

1. FOR GENERAL NOTES, LEGEND AND DRAWING INDEX REFER TO DRAWING 4-50-6-SF SH1.

**FOR TENDER ONLY.
NOT FOR CONSTRUCTION.**



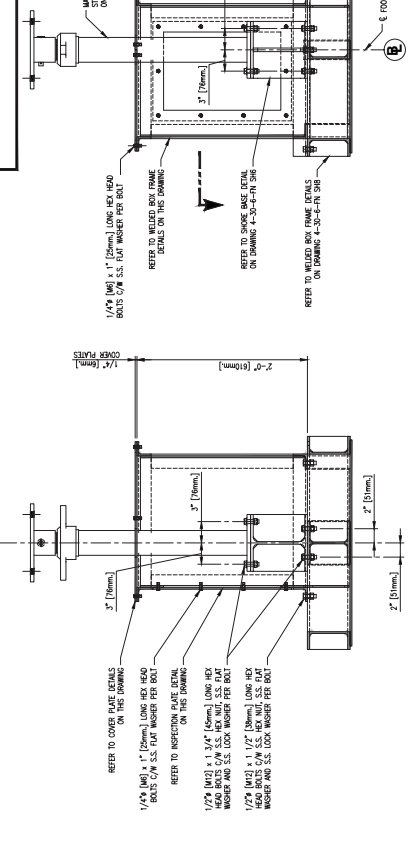
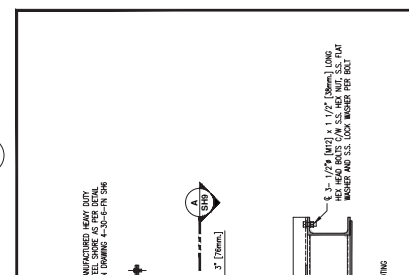
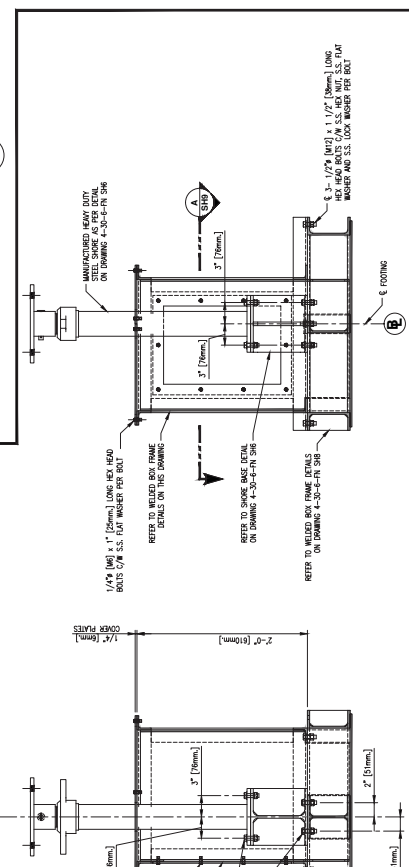
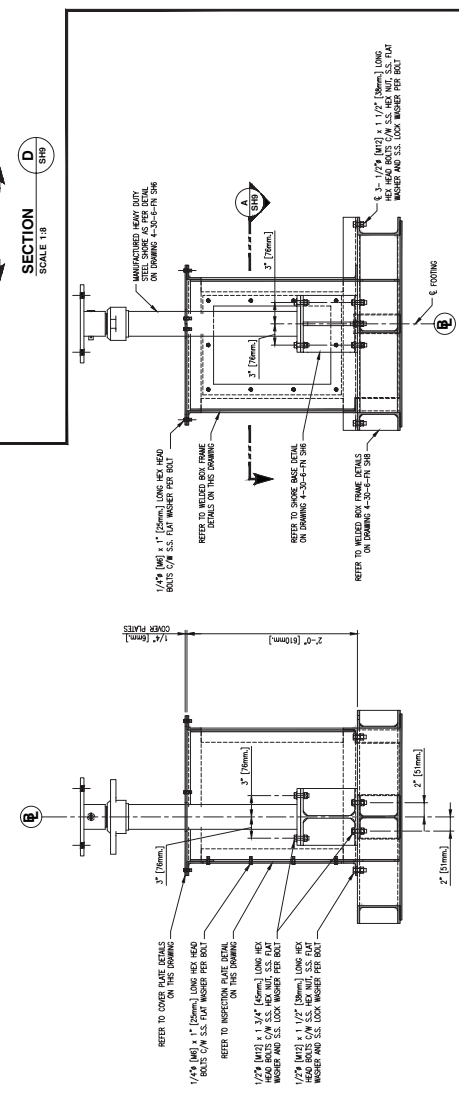
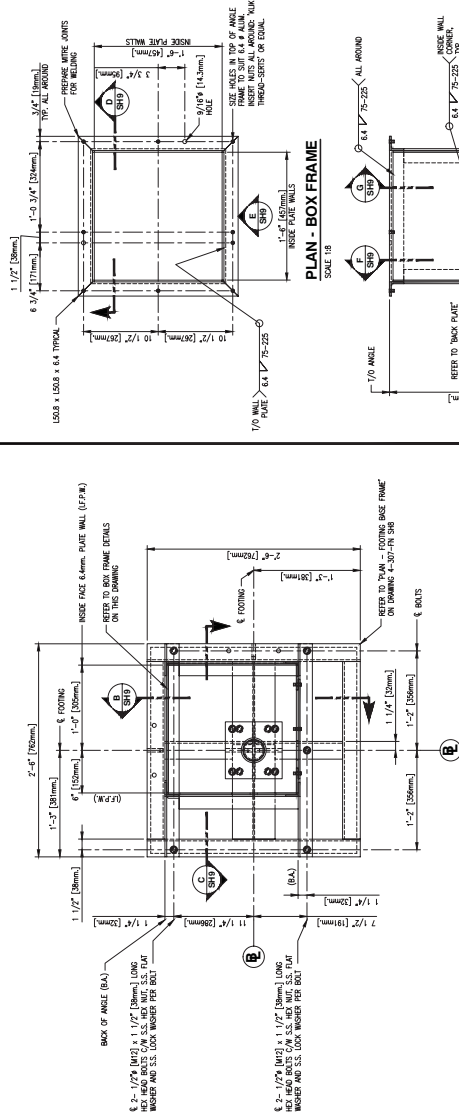
3D COMPLETE ASSEMBLY

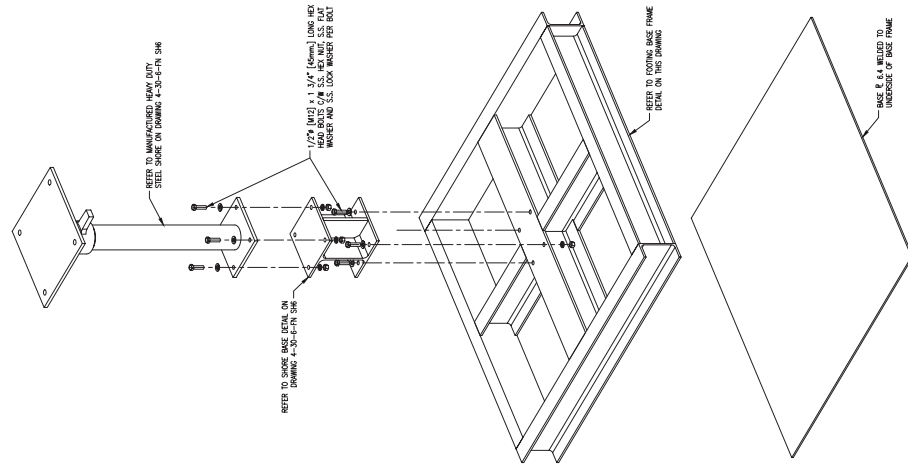
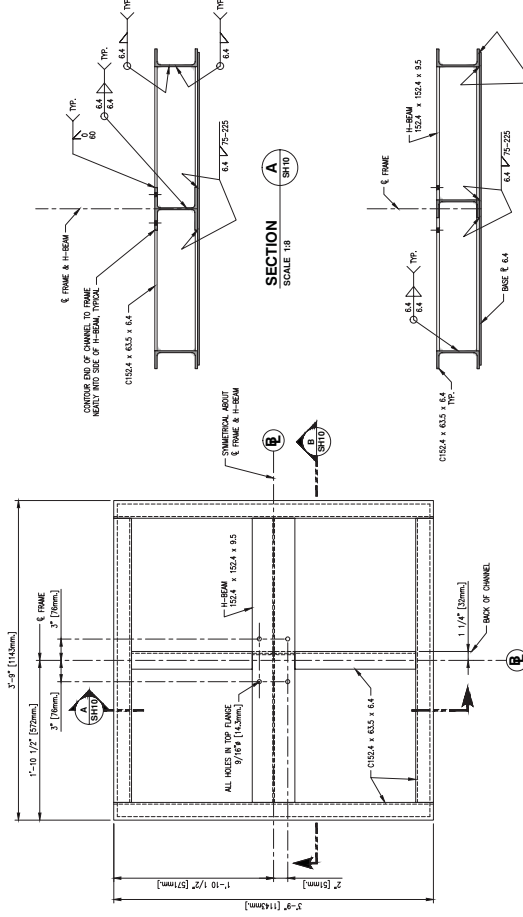
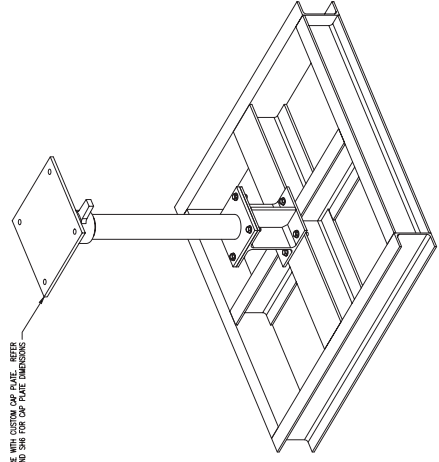
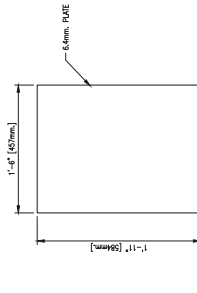
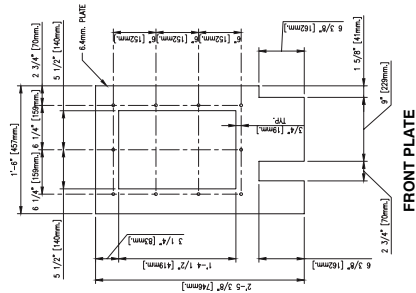
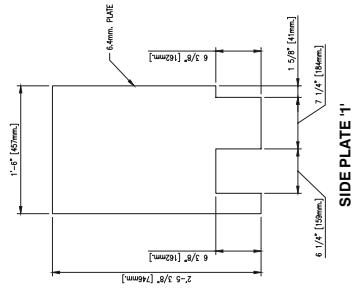


DESIGNED	M. Liang	
DRAWN	C. Reichhardt	
CHECKED		
RECOMMENDED		
APPROVED		ISSUED ONLY FOR TENDERING PURPOSES, NOT FOR CONSTRUCTION
APPROVED		REVISIONS
NO.	DATE	
△	NOV. 18, 2013	

NOTES

DRAWING REFERENCES



[illegible]



LEGEND (NOT ALL SYMBOLS USED)

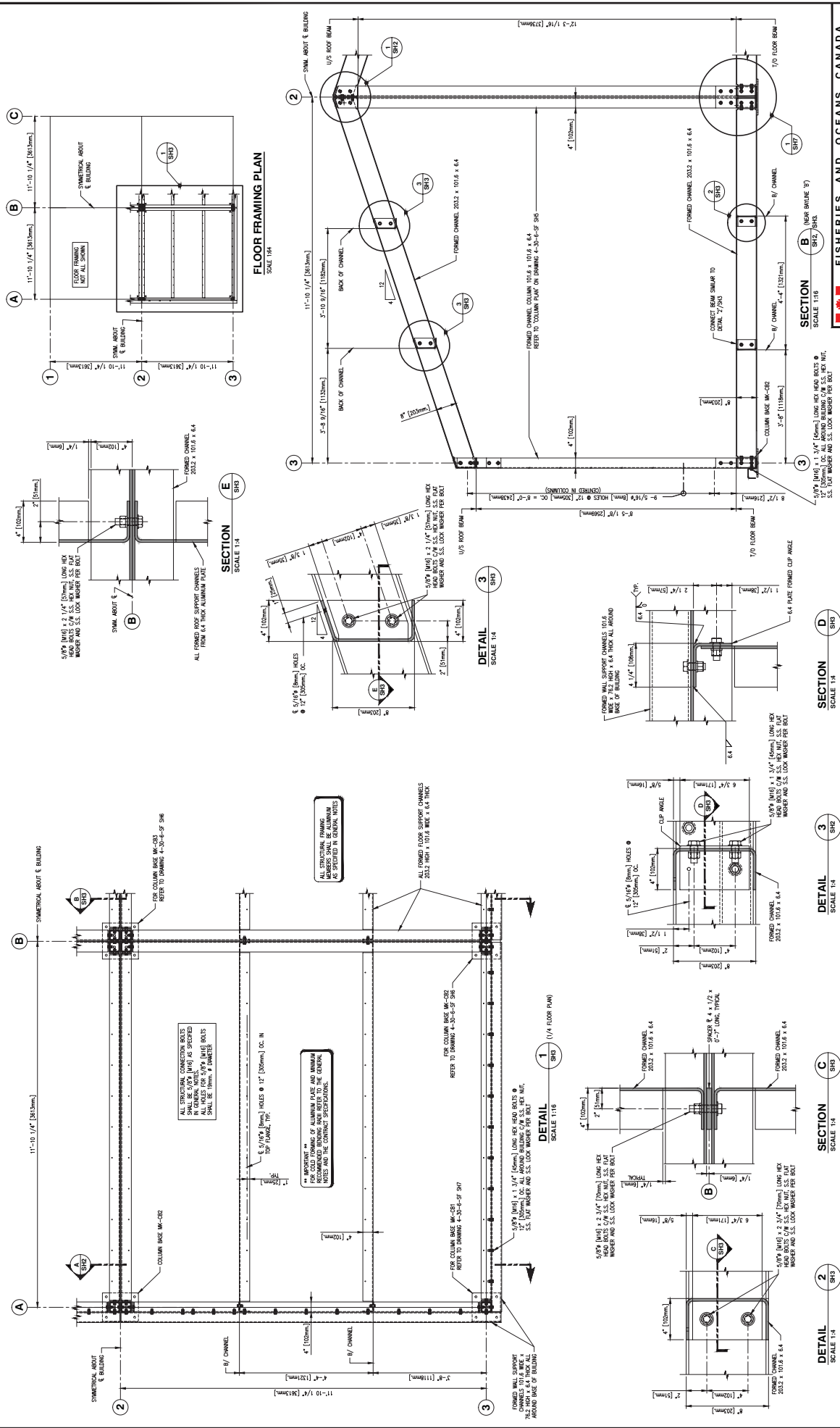
- (a) METALS AND FABRICATION
1. UNLESS OTHERWISE NOTED, ONLY NEW MATERIALS SHALL BE USED.
2. THE ENGINEER MAY INSPECT MATERIALS AND PRODUCTS (INCLUDING OWNER-SUPPLIED MATERIALS) AT HIS DISCRETION AT ALL STAGES OF THEIR MANUFACTURE, TRANSPORTATION AND ASSEMBLY. SATISFACTORY INSPECTION AT ANY STAGE DOES NOT PRECLUDE FUTURE REJECTION IF THE MATERIALS OR PRODUCTS ARE SUBSEQUENTLY FOUND TO LACK UNIFORMITY OR FAIL TO CONFORM TO THE REQUIREMENTS SPECIFIED.
3. ALUMINUM MANUFACTURING SOURCES AND CERTIFICATES SHALL BE SUBMITTED TO THE ENGINEER FOR REVIEW AND RECORD.

(8) METALS AND FABRICATION

- [illegible]

DRAWING INDEX

QMS / SHEET	DESCRIPTION
4-30-A-01 S01	MODEL 2420-A-51, STRUCTURAL ALUMINUM FRAME, 30 GENERAL ASSEMBLY, GENERAL NOTES, DRAWING INDEX AND LEGEND
4-30-A-02 S02	MODEL 2420-A-51, STRUCTURAL ALUMINUM FRAME, ROOF FRAMING DETAILS
4-30-A-03 S03	MODEL 2420-A-51, STRUCTURAL ALUMINUM FRAME, FLOOR FRAMING, PAIN, GROSS SECTION AND FLOOR FRAMING DETAILS
4-30-A-04 S04	MODEL 2420-A-51, STRUCTURAL ALUMINUM FRAME, ROOF CONNECTION DETAILS
4-30-A-05 S05	MODEL 2420-A-51, STRUCTURAL ALUMINUM FRAME, COLUMN PLAN
4-30-A-06 S06	MODEL 2420-A-51, STRUCTURAL ALUMINUM FRAME, COLUMN BASE
4-30-A-07 S07	MODEL 2420-A-51, STRUCTURAL ALUMINUM FRAME, COLUMN BASE
4-30-A-08 S08	MODEL 2420-A-51, STRUCTURAL ALUMINUM FRAME, ROOF BRACING, COUSSET PLATE, SECTION AND DETAILS
4-30-A-09 S09	MODEL 2420-A-51, STRUCTURAL ALUMINUM FRAME, EXTERIOR STAIRS, PLANE AND SECTIONS
4-30-A-10 S10	MODEL 2420-A-51, ALUMINUM FOUNDATION, 30 GENERAL ASSEMBLY, FLOOR FRAMING AND FOOTINGS
4-30-A-11 S11	MODEL 2420-A-51, ALUMINUM FOUNDATION, 30 GENERAL ASSEMBLY, FLOOR FRAMING AND FOOTINGS
4-30-A-12 S12	MODEL 2420-A-51, ALUMINUM FOUNDATION, 30 GENERAL ASSEMBLY, FLOOR FRAMING AND FOOTINGS
4-30-A-13 S13	MODEL 2420-A-51, ALUMINUM FOUNDATION, 30 GENERAL ASSEMBLY, FLOOR FRAMING AND FOOTINGS
4-30-A-14 S14	MODEL 2420-A-51, ALUMINUM FOUNDATION, 30 GENERAL ASSEMBLY, FLOOR FRAMING AND FOOTINGS
4-30-A-15 S15	MODEL 2420-A-51, ALUMINUM FOUNDATION, 30 GENERAL ASSEMBLY, FLOOR FRAMING AND FOOTINGS
4-30-A-16 S16	MODEL 2420-A-51, ALUMINUM FOUNDATION, 30 GENERAL ASSEMBLY, FLOOR FRAMING AND FOOTINGS
4-30-A-17 S17	MODEL 2420-A-51, ALUMINUM FOUNDATION, 30 GENERAL ASSEMBLY, FLOOR FRAMING AND FOOTINGS
4-30-A-18 S18	MODEL 2420-A-51, ALUMINUM FOUNDATION, 30 GENERAL ASSEMBLY, FLOOR FRAMING AND FOOTINGS
4-30-A-19 S19	MODEL 2420-A-51, ALUMINUM FOUNDATION, 30 GENERAL ASSEMBLY, FLOOR FRAMING AND FOOTINGS
4-30-A-20 S20	MODEL 2420-A-51, ALUMINUM FOUNDATION, 30 GENERAL ASSEMBLY, FLOOR FRAMING AND FOOTINGS



FOR TENDER ONLY.
NOT FOR CONSTRUCTION.

1. FOR GENERAL NOTES AND LEGEND REFER TO DRAWING 4-30-6-SF SH1.

DRAWING REFERENCES

NOTES

NO.	DATE	REVISIONS
-----	------	-----------

REVISIONS

APPROVED

10

FLOOR 1

FRAMING

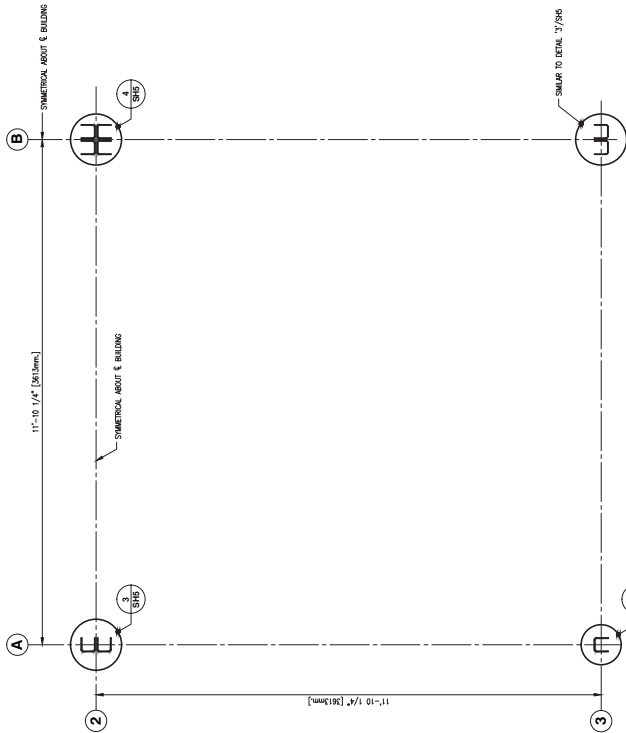
GG DETAIL

57

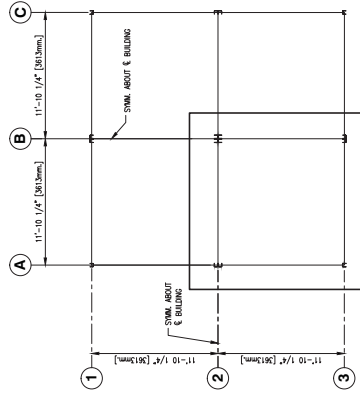
REV

VISION

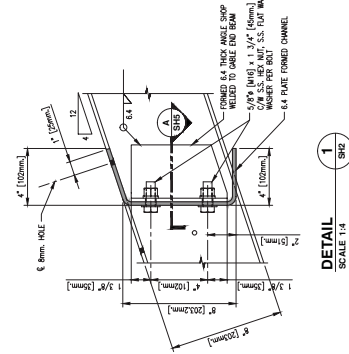
[illegible]



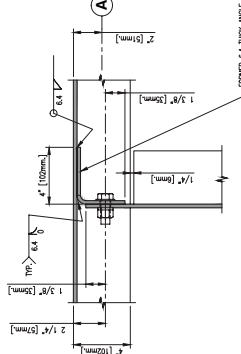
DETAIL
SCALE 1:16



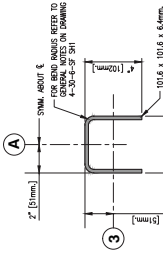
COLUMN PLAN
SCALE 1:16



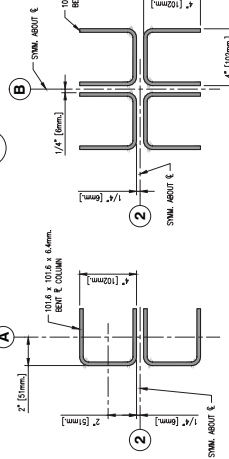
DETAIL
SCALE 1:4



DETAIL
SCALE 1:4



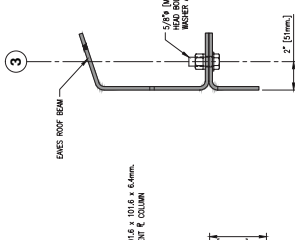
DETAIL
SCALE 1:4



DETAIL
SCALE 1:4

DETAIL
SCALE 1:4

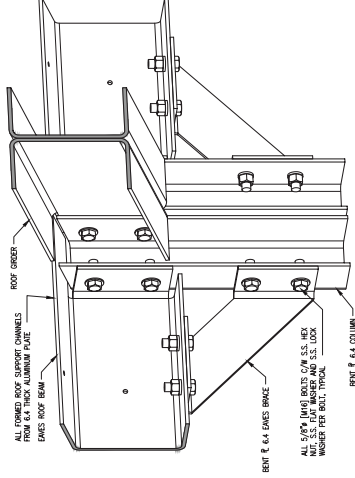
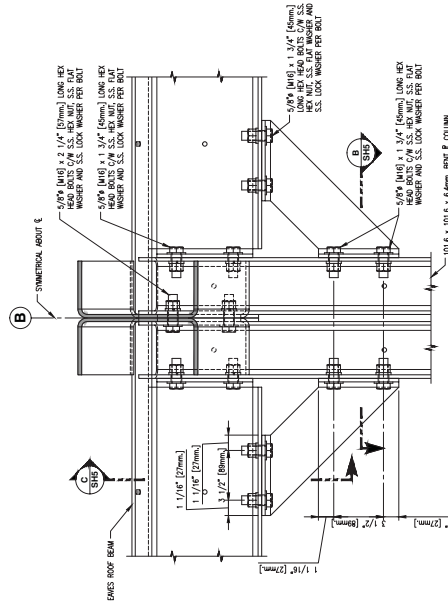
SECTION
SCALE 1:4



SECTION
SCALE 1:4

SECTION
SCALE 1:4

INTERIOR 3D VIEW AT ROOF EAVES



**FOR TENDER ONLY.
NOT FOR CONSTRUCTION.**

1. FOR GENERAL NOTES AND LEGEND REFER TO DRAWING 4-30-4-SF SHL.

2. FOR COLD FORMING OF ALUMINUM PLATE AND FOR COLD FORMING OF ALUMINUM CHANNELS REFER TO THE GENERAL NOTES AND THE CONTRACT SPECIFICATION.

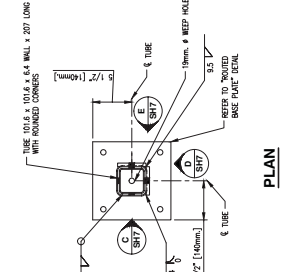
DWG. NO.	DRAWING REFERENCES	NOTES	SCALE 1:4		SCALE 1:4	SCALE 1:4	SCALE 1:4	SCALE 1:4	SCALE 1:4	SCALE 1:4	SCALE 1:4	SCALE 1:4	SCALE 1:4	SCALE 1:4	SCALE 1:4	SCALE 1:4	SCALE 1:4	SCALE 1:4	SCALE 1:4	SCALE 1:4	SCALE 1:4	SCALE 1:4	SCALE 1:4	SCALE 1:4	SCALE 1:4	SCALE 1:4	SCALE 1:4	SCALE 1:4	SCALE 1:4	SCALE 1:4	SCALE 1:4	SCALE 1:4	SCALE 1:4	SCALE 1:4	SCALE 1:4	SCALE 1:4	SCALE 1:4	SCALE 1:4	SCALE 1:4	SCALE 1:4	SCALE 1:4	SCALE 1:4	SCALE 1:4	SCALE 1:4	SCALE 1:4	SCALE 1:4	SCALE 1:4	SCALE 1:4	SCALE 1:4	SCALE 1:4	SCALE 1:4	SCALE 1:4	SCALE 1:4	SCALE 1:4	SCALE 1:4	SCALE 1:4	SCALE 1:4	SCALE 1:4	SCALE 1:4	SCALE 1:4	SCALE 1:4	SCALE 1:4	SCALE 1:4	SCALE 1:4	SCALE 1:4	SCALE 1:4	SCALE 1:4	SCALE 1:4	SCALE 1:4	SCALE 1:4	SCALE 1:4	SCALE 1:4	SCALE 1:4	SCALE 1:4	SCALE 1:4	SCALE 1:4	SCALE 1:4	SCALE 1:4	SCALE 1:4	SCALE 1:4	SCALE 1:4	SCALE 1:4	SCALE 1:4	SCALE 1:4	SCALE 1:4	SCALE 1:4	SCALE 1:4	SCALE 1:4	SCALE 1:4	SCALE 1:4	SCALE 1:4	SCALE 1:4	SCALE 1:4	SCALE 1:4	SCALE 1:4	SCALE 1:4	SCALE 1:4	SCALE 1:4	SCALE 1:4	SCALE 1:4	SCALE 1:4	SCALE 1:4	SCALE 1:4	SCALE 1:4	SCALE 1:4	SCALE 1:4	SCALE 1:4	SCALE 1:4	SCALE 1:4	SCALE 1:4	SCALE 1:4	SCALE 1:4	SCALE 1:4	SCALE 1:4	SCALE 1:4	SCALE 1:4	SCALE 1:4	SCALE 1:4	SCALE 1:4	SCALE 1:4	SCALE 1:4	SCALE 1:4	SCALE 1:4	SCALE 1:4	SCALE 1:4	SCALE 1:4	SCALE 1:4	SCALE 1:4	SCALE 1:4	SCALE 1:4	SCALE 1:4	SCALE 1:4	SCALE 1:4	SCALE 1:4	SCALE 1:4	SCALE 1:4	SCALE 1:4	SCALE 1:4	SCALE 1:4	SCALE 1:4	SCALE 1:4	SCALE 1:4	SCALE 1:4	SCALE 1:4	SCALE 1:4	SCALE 1:4	SCALE 1:4	SCALE 1:4	SCALE 1:4	SCALE 1:4	SCALE 1:4	SCALE 1:4	SCALE 1:4	SCALE 1:4	SCALE 1:4	SCALE 1:4	SCALE 1:4	SCALE 1:4	SCALE 1:4	SCALE 1:4	SCALE 1:4	SCALE 1:4	SCALE 1:4	SCALE 1:4	SCALE 1:4	SCALE 1:4	SCALE 1:4	SCALE 1:4	SCALE 1:4	SCALE 1:4	SCALE 1:4	SCALE 1:4	SCALE 1:4	SCALE 1:4	SCALE 1:4	SCALE 1:4	SCALE 1:4	SCALE 1:4	SCALE 1:4	SCALE 1:4	SCALE 1:4	SCALE 1:4	SCALE 1:4	SCALE 1:4	SCALE 1:4	SCALE 1:4	SCALE 1:4	SCALE 1:4	SCALE 1:4	SCALE 1:4	SCALE 1:4	SCALE 1:4	SCALE 1:4	SCALE 1:4	SCALE 1:4	SCALE 1:4	SCALE 1:4	SCALE 1:4	SCALE 1:4	SCALE 1:4	SCALE 1:4	SCALE 1:4	SCALE 1:4	SCALE 1:4	SCALE 1:4	SCALE 1:4	SCALE 1:4	SCALE 1:4	SCALE 1:4	SCALE 1:4	SCALE 1:4	SCALE 1:4	SCALE 1:4	SCALE 1:4	SCALE 1:4	SCALE 1:4	SCALE 1:4	SCALE 1:4	SCALE 1:4	SCALE 1:4	SCALE 1:4	SCALE 1:4	SCALE 1:4	SCALE 1:4	SCALE 1:4	SCALE 1:4	SCALE 1:4	SCALE 1:4	SCALE 1:4	SCALE 1:4	SCALE 1:4	SCALE 1:4	SCALE 1:4	SCALE 1:4	SCALE 1:4	SCALE 1:4	SCALE 1:4	SCALE 1:4	SCALE 1:4	SCALE 1:4	SCALE 1:4	SCALE 1:4	SCALE 1:4	SCALE 1:4	SCALE 1:4	SCALE 1:4	SCALE 1:4	SCALE 1:4	SCALE 1:4	SCALE 1:4	SCALE 1:4	SCALE 1:4	SCALE 1:4	SCALE 1:4	SCALE 1:4	SCALE 1:4	SCALE 1:4	SCALE 1:4	SCALE 1:4	SCALE 1:4	SCALE 1:4	SCALE 1:4	SCALE 1:4	SCALE 1:4	SCALE 1:4	SCALE 1:4	SCALE 1:4	SCALE 1:4	SCALE 1:4	SCALE 1:4	SCALE 1:4	SCALE 1:4	SCALE 1:4	SCALE 1:4	SCALE 1:4	SCALE 1:4	SCALE 1:4	SCALE 1:4	SCALE 1:4	SCALE 1:4	SCALE 1:4	SCALE 1:4	SCALE 1:4	SCALE 1:4	SCALE 1:4	SCALE 1:4	SCALE 1:4	SCALE 1:4	SCALE 1:4	SCALE 1:4	SCALE 1:4	SCALE 1:4	SCALE 1:4	SCALE 1:4	SCALE 1:4	SCALE 1:4	SCALE 1:4	SCALE 1:4	SCALE 1:4	SCALE 1:4	SCALE 1:4	SCALE 1:4	SCALE 1:4	SCALE 1:4	SCALE 1:4	SCALE 1:4	SCALE 1:4	SCALE 1:4	SCALE 1:4	SCALE 1:4	SCALE 1:4	SCALE 1:4	SCALE 1:4	SCALE 1:4	SCALE 1:4	SCALE 1:4	SCALE 1:4	SCALE 1:4	SCALE 1:4	SCALE 1:4	SCALE 1:4	SCALE 1:4	SCALE 1:4	SCALE 1:4	SCALE 1:4	SCALE 1:4	SCALE 1:4	SCALE 1:4	SCALE 1:4	SCALE 1:4	SCALE 1:4	SCALE 1:4	SCALE 1:4	SCALE 1:4	SCALE 1:4	SCALE 1:4	SCALE 1:4	SCALE 1:4	SCALE 1:4	SCALE 1:4	SCALE 1:4	SCALE 1:4	SCALE 1:4	SCALE 1:4	SCALE 1:4	SCALE 1:4	SCALE 1:4	SCALE 1:4	SCALE 1:4	SCALE 1:4	SCALE 1:4	SCALE 1:4	SCALE 1:4	SCALE 1:4	SCALE 1:4	SCALE 1:4	SCALE 1:4	SCALE 1:4	SCALE 1:4	SCALE 1:4	SCALE 1:4	SCALE 1:4	SCALE 1:4	SCALE 1:4	SCALE 1:4	SCALE 1:4	SCALE 1:4	SCALE 1:4	SCALE 1:4	SCALE 1:4	SCALE 1:4	SCALE 1:4	SCALE 1:4	SCALE 1:4	SCALE 1:4	SCALE 1:4	SCALE 1:4	SCALE 1:4	SCALE 1:4	SCALE 1:4	SCALE 1:4	SCALE 1:4	SCALE 1:4	SCALE 1:4	SCALE 1:4	SCALE 1:4	SCALE 1:4	SCALE 1:4	SCALE 1:4	SCALE 1:4	SCALE 1:4	SCALE 1:4	SCALE 1:4	SCALE 1:4	SCALE 1:4	SCALE 1:4	SCALE 1:4	SCALE 1:4	SCALE 1:4	SCALE 1:4	SCALE 1:4	SCALE 1:4	SCALE 1:4	SCALE 1:4	SCALE 1:4	SCALE 1:4	SCALE 1:4	SCALE 1:4	SCALE 1:4	SCALE 1:4	SCALE 1:4	SCALE 1:4	SCALE 1:4	SCALE 1:4	SCALE 1:4	SCALE 1:4	SCALE 1:4	SCALE 1:4	SCALE 1:4	SCALE 1:4	SCALE 1:4	SCALE 1:4	SCALE 1:4	SCALE 1:4	SCALE 1:4	SCALE 1:4	SCALE 1:4	SCALE 1:4	SCALE 1:4	SCALE 1:4	SCALE 1:4	SCALE 1:4	SCALE 1:4	SCALE 1:4	SCALE 1:4	SCALE 1:4	SCALE 1:4	SCALE 1:4	SCALE 1:4	SCALE 1:4	SCALE 1:4	SCALE 1:4	SCALE 1:4	SCALE 1:4	SCALE 1:4	SCALE 1:4	SCALE 1:4	SCALE 1:4	SCALE 1:4	SCALE 1:4	SCALE 1:4	SCALE 1:4	SCALE 1:4	SCALE 1:4	SCALE 1:4	SCALE 1:4	SCALE 1:4	SCALE 1:4	SCALE 1:4	SCALE 1:4	SCALE 1:4	SCALE 1:4	SCALE 1:4	SCALE 1:4	SCALE 1:4	SCALE 1:4	SCALE 1:4	SCALE 1:4	SCALE 1:4	SCALE 1:4	SCALE 1:4	SCALE 1:4	SCALE 1:4	SCALE 1:4	SCALE 1:4	SCALE 1:4	SCALE 1:4	SCALE 1:4	SCALE 1:4	SCALE 1:4	SCALE 1:4	SCALE 1:4	SCALE 1:4	SCALE 1:4	SCALE 1:4	SCALE 1:4	SCALE 1:4	SCALE 1:4	SCALE 1:4	SCALE 1:4	SCALE 1:4	SCALE 1:4	SCALE 1:4	SCALE 1:4	SCALE 1:4	SCALE 1:4	SCALE 1:4	SCALE 1:4	SCALE 1:4	SCALE 1:4	SCALE 1:4	SCALE 1:4	SCALE 1:4	SCALE 1:4	SCALE 1:4	SCALE 1:4	SCALE 1:4	SCALE 1:4	SCALE 1:4	SCALE 1:4	SCALE 1:4	SCALE 1:4	SCALE 1:4	SCALE 1:4	SCALE 1:4	SCALE 1:4	SCALE 1:4	SCALE 1:4	SCALE 1:4	SCALE 1:4	SCALE 1:4	SCALE 1:4	SCALE 1:4	SCALE 1:4	SCALE 1:4	SCALE 1:4	SCALE 1:4	SCALE 1:4	SCALE 1:4	SCALE 1:4	SCALE 1:4	SCALE 1:4	SCALE 1:4	SCALE 1:4	SCALE 1:4	SCALE 1:4	SCALE 1:4	SCALE 1:4	SCALE 1:4	SCALE 1:4	SCALE 1:4	SCALE 1:4	SCALE 1:4	SCALE 1:4	SCALE 1:4	SCALE 1:4	SCALE 1:4	SCALE 1:4	SCALE 1:4	SCALE 1:4	SCALE 1:4	SCALE 1:4	SCALE 1:4	SCALE 1:4	SCALE 1:4	SCALE 1:4	SCALE 1:4	SCALE 1:4	SCALE 1:4	SCALE 1:4	SCALE 1:4	SCALE 1:4	SCALE 1:4	SCALE 1:4	SCALE 1:4	SCALE 1:4	SCALE 1:4	SCALE 1:4	SCALE 1:4	SCALE 1:4	SCALE 1:4	SCALE 1:4	SCALE 1:4	SCALE 1:4	SCALE 1:4	SCALE 1:4	SCALE 1:4	SCALE 1:4	SCALE 1:4	SCALE 1:4	SCALE 1:4	SCALE 1:4	SCALE 1:4	SCALE 1:4	SCALE 1:4	SCALE 1:4	SCALE 1:4	SCALE 1:4	SCALE 1:4	SCALE 1:4	SCALE 1:4	SCALE 1:4	SCALE 1:4	SCALE 1:4	SCALE 1:4	SCALE 1:4	SCALE 1:4	SCALE 1:4	SCALE 1:4	SCALE 1:4	SCALE 1:4	SCALE 1:4	SCALE 1:4	SCALE 1:4	SCALE 1:4	SCALE 1:4	SCALE 1:4	SCALE 1:4	SCALE 1:4	SCALE 1:4	SCALE 1:4	SCALE 1:4	SCALE 1:4	SCALE 1:4	SCALE 1:4	SCALE 1:4	SCALE 1:4	SCALE 1:4	SCALE 1:4	SCALE 1:4	SCALE 1:4	SCALE 1:4	SCALE 1:4	SCALE 1:4	SCALE 1:4	SCALE 1:4	SCALE 1:4	SCALE 1:4	SCALE 1:4	SCALE 1:4	SCALE 1:4	SCALE 1:4	SCALE 1:4	SCALE 1:4	SCALE 1:4	SCALE 1:4	SCALE 1:4	SCALE 1:4	SCALE 1:4	SCALE 1:4	SCALE 1:4	SCALE 1:4	SCALE 1:4	SCALE 1:4	SCALE 1:4	SCALE 1:4	SCALE 1:4	SCALE 1:4	SCALE 1:4	SCALE 1:4	SCALE 1:4	SCALE 1:4	SCALE 1:4	SCALE 1:4	SCALE 1:4	SCALE 1:4	SCALE 1:4	SCALE 1:4	SCALE 1:4	SCALE 1:4	SCALE 1:4	SCALE 1:4	SCALE 1:4	SCALE 1:4	SCALE 1:4	SCALE 1:4	SCALE 1:4	SCALE 1:4	SCALE 1:4	SCALE 1:4	SCALE 1:4	SCALE 1:4	SCALE 1:4	SCALE 1:4	SCALE 1:4	SCALE 1:4	SCALE 1:4	SCALE 1:4	SCALE 1:4	SCALE 1:4	SCALE 1:4	SCALE 1:4	SCALE 1:4	SCALE 1:4
----------	--------------------	-------	-----------	--	-----------	-----------	-----------	-----------	-----------	-----------	-----------	-----------	-----------	-----------	-----------	-----------	-----------	-----------	-----------	-----------	-----------	-----------	-----------	-----------	-----------	-----------	-----------	-----------	-----------	-----------	-----------	-----------	-----------	-----------	-----------	-----------	-----------	-----------	-----------	-----------	-----------	-----------	-----------	-----------	-----------	-----------	-----------	-----------	-----------	-----------	-----------	-----------	-----------	-----------	-----------	-----------	-----------	-----------	-----------	-----------	-----------	-----------	-----------	-----------	-----------	-----------	-----------	-----------	-----------	-----------	-----------	-----------	-----------	-----------	-----------	-----------	-----------	-----------	-----------	-----------	-----------	-----------	-----------	-----------	-----------	-----------	-----------	-----------	-----------	-----------	-----------	-----------	-----------	-----------	-----------	-----------	-----------	-----------	-----------	-----------	-----------	-----------	-----------	-----------	-----------	-----------	-----------	-----------	-----------	-----------	-----------	-----------	-----------	-----------	-----------	-----------	-----------	-----------	-----------	-----------	-----------	-----------	-----------	-----------	-----------	-----------	-----------	-----------	-----------	-----------	-----------	-----------	-----------	-----------	-----------	-----------	-----------	-----------	-----------	-----------	-----------	-----------	-----------	-----------	-----------	-----------	-----------	-----------	-----------	-----------	-----------	-----------	-----------	-----------	-----------	-----------	-----------	-----------	-----------	-----------	-----------	-----------	-----------	-----------	-----------	-----------	-----------	-----------	-----------	-----------	-----------	-----------	-----------	-----------	-----------	-----------	-----------	-----------	-----------	-----------	-----------	-----------	-----------	-----------	-----------	-----------	-----------	-----------	-----------	-----------	-----------	-----------	-----------	-----------	-----------	-----------	-----------	-----------	-----------	-----------	-----------	-----------	-----------	-----------	-----------	-----------	-----------	-----------	-----------	-----------	-----------	-----------	-----------	-----------	-----------	-----------	-----------	-----------	-----------	-----------	-----------	-----------	-----------	-----------	-----------	-----------	-----------	-----------	-----------	-----------	-----------	-----------	-----------	-----------	-----------	-----------	-----------	-----------	-----------	-----------	-----------	-----------	-----------	-----------	-----------	-----------	-----------	-----------	-----------	-----------	-----------	-----------	-----------	-----------	-----------	-----------	-----------	-----------	-----------	-----------	-----------	-----------	-----------	-----------	-----------	-----------	-----------	-----------	-----------	-----------	-----------	-----------	-----------	-----------	-----------	-----------	-----------	-----------	-----------	-----------	-----------	-----------	-----------	-----------	-----------	-----------	-----------	-----------	-----------	-----------	-----------	-----------	-----------	-----------	-----------	-----------	-----------	-----------	-----------	-----------	-----------	-----------	-----------	-----------	-----------	-----------	-----------	-----------	-----------	-----------	-----------	-----------	-----------	-----------	-----------	-----------	-----------	-----------	-----------	-----------	-----------	-----------	-----------	-----------	-----------	-----------	-----------	-----------	-----------	-----------	-----------	-----------	-----------	-----------	-----------	-----------	-----------	-----------	-----------	-----------	-----------	-----------	-----------	-----------	-----------	-----------	-----------	-----------	-----------	-----------	-----------	-----------	-----------	-----------	-----------	-----------	-----------	-----------	-----------	-----------	-----------	-----------	-----------	-----------	-----------	-----------	-----------	-----------	-----------	-----------	-----------	-----------	-----------	-----------	-----------	-----------	-----------	-----------	-----------	-----------	-----------	-----------	-----------	-----------	-----------	-----------	-----------	-----------	-----------	-----------	-----------	-----------	-----------	-----------	-----------	-----------	-----------	-----------	-----------	-----------	-----------	-----------	-----------	-----------	-----------	-----------	-----------	-----------	-----------	-----------	-----------	-----------	-----------	-----------	-----------	-----------	-----------	-----------	-----------	-----------	-----------	-----------	-----------	-----------	-----------	-----------	-----------	-----------	-----------	-----------	-----------	-----------	-----------	-----------	-----------	-----------	-----------	-----------	-----------	-----------	-----------	-----------	-----------	-----------	-----------	-----------	-----------	-----------	-----------	-----------	-----------	-----------	-----------	-----------	-----------	-----------	-----------	-----------	-----------	-----------	-----------	-----------	-----------	-----------	-----------	-----------	-----------	-----------	-----------	-----------	-----------	-----------	-----------	-----------	-----------	-----------	-----------	-----------	-----------	-----------	-----------	-----------	-----------	-----------	-----------	-----------	-----------	-----------	-----------	-----------	-----------	-----------	-----------	-----------	-----------	-----------	-----------	-----------	-----------	-----------	-----------	-----------	-----------	-----------	-----------	-----------	-----------	-----------	-----------	-----------	-----------	-----------	-----------	-----------	-----------	-----------	-----------	-----------	-----------	-----------	-----------	-----------	-----------	-----------	-----------	-----------	-----------	-----------	-----------	-----------	-----------	-----------	-----------	-----------	-----------	-----------	-----------	-----------	-----------	-----------	-----------	-----------	-----------	-----------	-----------	-----------	-----------	-----------	-----------	-----------	-----------	-----------	-----------	-----------	-----------	-----------	-----------	-----------	-----------	-----------	-----------	-----------	-----------	-----------	-----------	-----------	-----------	-----------	-----------	-----------	-----------	-----------	-----------	-----------	-----------	-----------	-----------	-----------	-----------	-----------	-----------	-----------	-----------	-----------	-----------	-----------	-----------	-----------	-----------	-----------	-----------	-----------	-----------	-----------	-----------	-----------	-----------	-----------	-----------	-----------	-----------	-----------	-----------	-----------	-----------	-----------	-----------	-----------	-----------	-----------	-----------	-----------	-----------	-----------	-----------	-----------	-----------	-----------	-----------	-----------	-----------	-----------	-----------	-----------	-----------	-----------	-----------	-----------	-----------	-----------	-----------	-----------	-----------	-----------	-----------	-----------	-----------	-----------	-----------	-----------	-----------	-----------	-----------	-----------	-----------	-----------	-----------	-----------	-----------	-----------	-----------	-----------	-----------	-----------	-----------	-----------	-----------	-----------	-----------	-----------	-----------	-----------	-----------	-----------	-----------	-----------	-----------	-----------	-----------	-----------	-----------	-----------	-----------	-----------	-----------	-----------	-----------	-----------	-----------	-----------	-----------	-----------	-----------	-----------

FISHERIES AND OCEANS CANADA
REAL PROPERTY, SAFETY & SECURITY

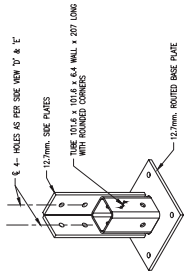
PREFABRICATED BUILDING
MODEL 24X24-S1

STRUCTURAL ALUMINUM FRAME
COLUMN PLAN, KNEE BRACING

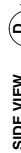
AND ROOF BEAM CONNECTION
DETAILS



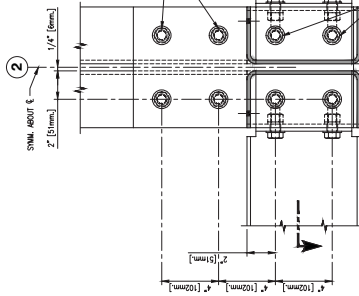
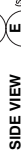
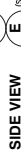
ROUTED BASE PLATE



3D VIEW



1
MAKE FOUR (4) COLUMN BASES MK-CBT



SECTION
SCALE 1:4

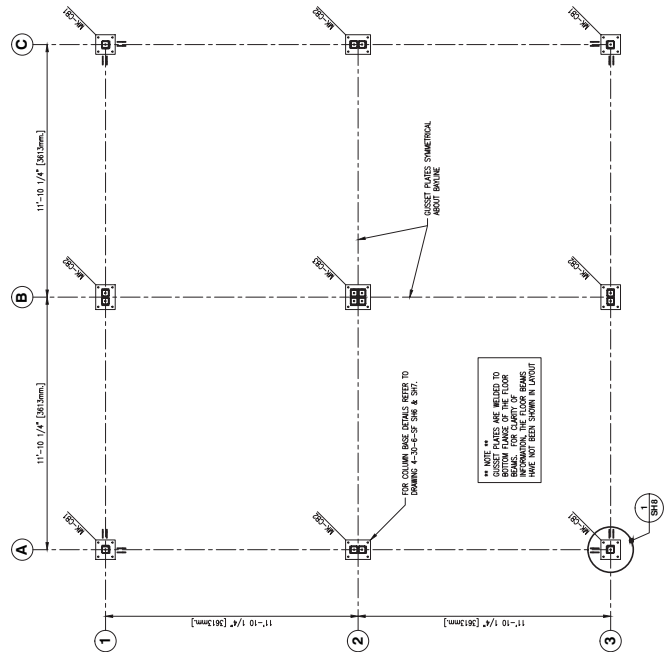
A
SH7

1

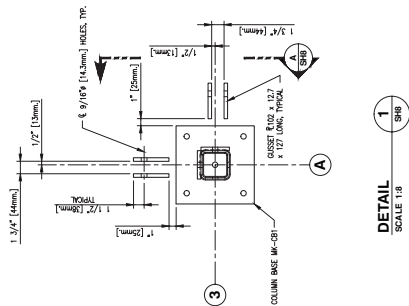
DETAIL
SCALE 1:4

FOR TENDER ONLY.
NOT FOR CONSTRUCTION.

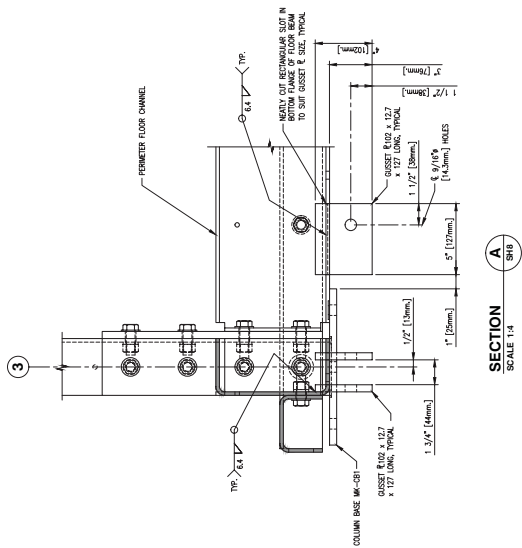
[illegible]



CABLE BRACING GUSSET PLATE LAYOUT
SCALE 1/32



DETAIL A
SCALE 1/8



SECTION A-B
SCALE 1/4

TYPICAL GUSSET PLATE CONNECTIONS TO FLOOR BEAMS

**FOR TENDER ONLY.
NOT FOR CONSTRUCTION.**

1. FOR GENERAL NOTES AND LEGEND REFER TO DRAWING 4-30-4-SF SHL.

DWG. NO. DRAWING REFERENCES

NOTES

NO. DATE

REVISIONS

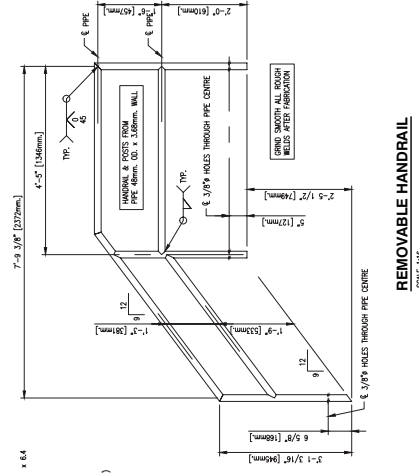
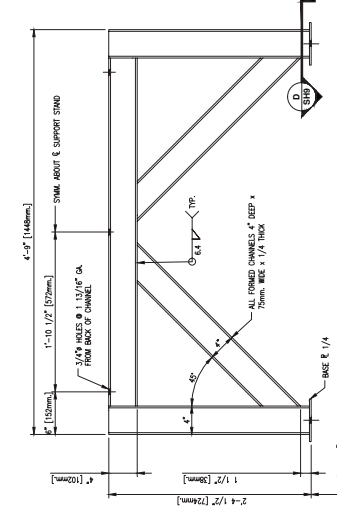
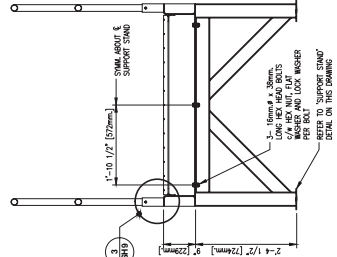
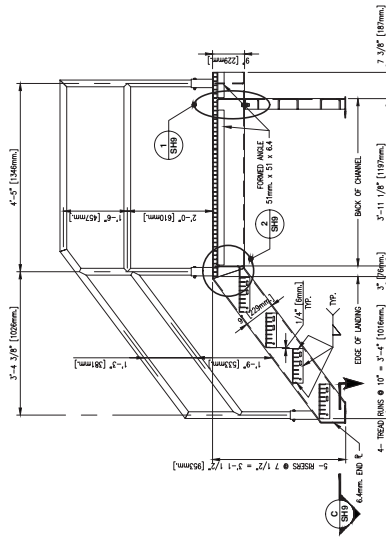
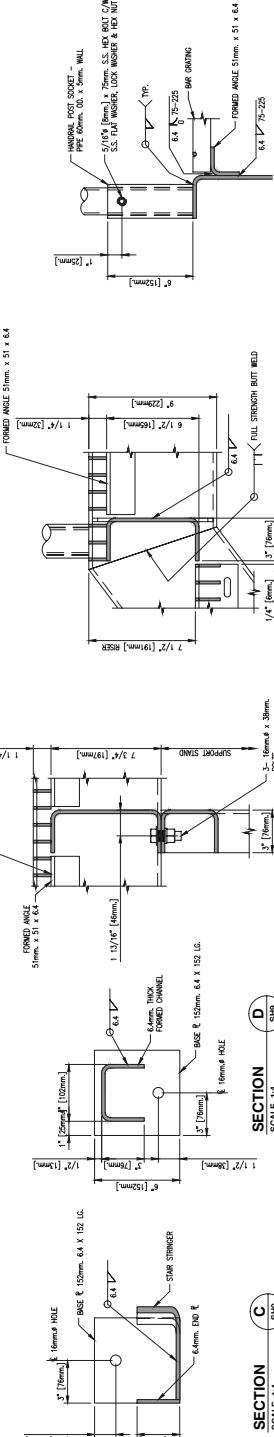
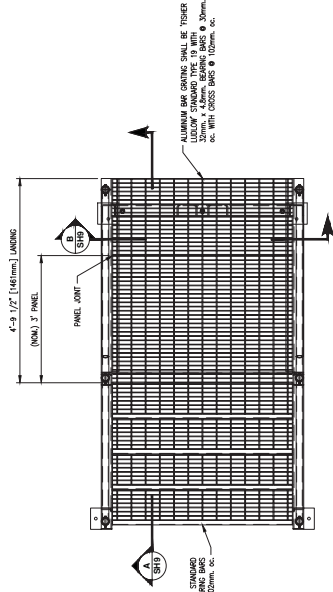
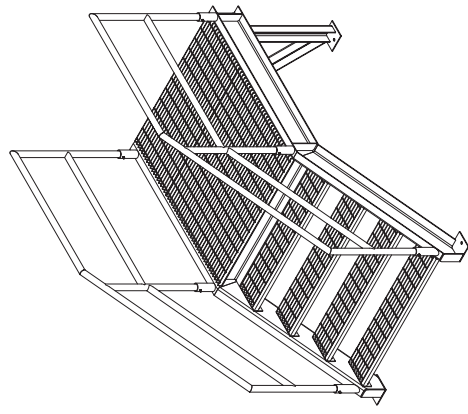
DESIGNED BY: M. Liang
DRAWN BY: M. Liang
CHECKED BY: M. Liang
APPROVED BY: M. Liang

DATE: NOV. 18, 2013
REVISIONS: 1. DRAWING ADDED TO TENDER PACKAGE. ISSUED ONLY FOR TENDERING PURPOSES. NOT FOR CONSTRUCTION.

PREFABRICATED BUILDING
MODEL 24X24-S1
STRUCTURAL ALUMINUM FRAME
CABLE BRACING GUSSET PLATE
LAYOUT, SECTION AND DETAILS

SCALE: AS NOTED
DATE: JULY 5, 2013
DWG. NUMBER: 4-30-4-SF
SHEET: 8 OF 9
REVISION: A

FISHERIES AND OCEANS CANADA
REAL PROPERTY, SAFETY & SECURITY



SUPPORT STAND

SECTION
SCALE 1:16
A SH9

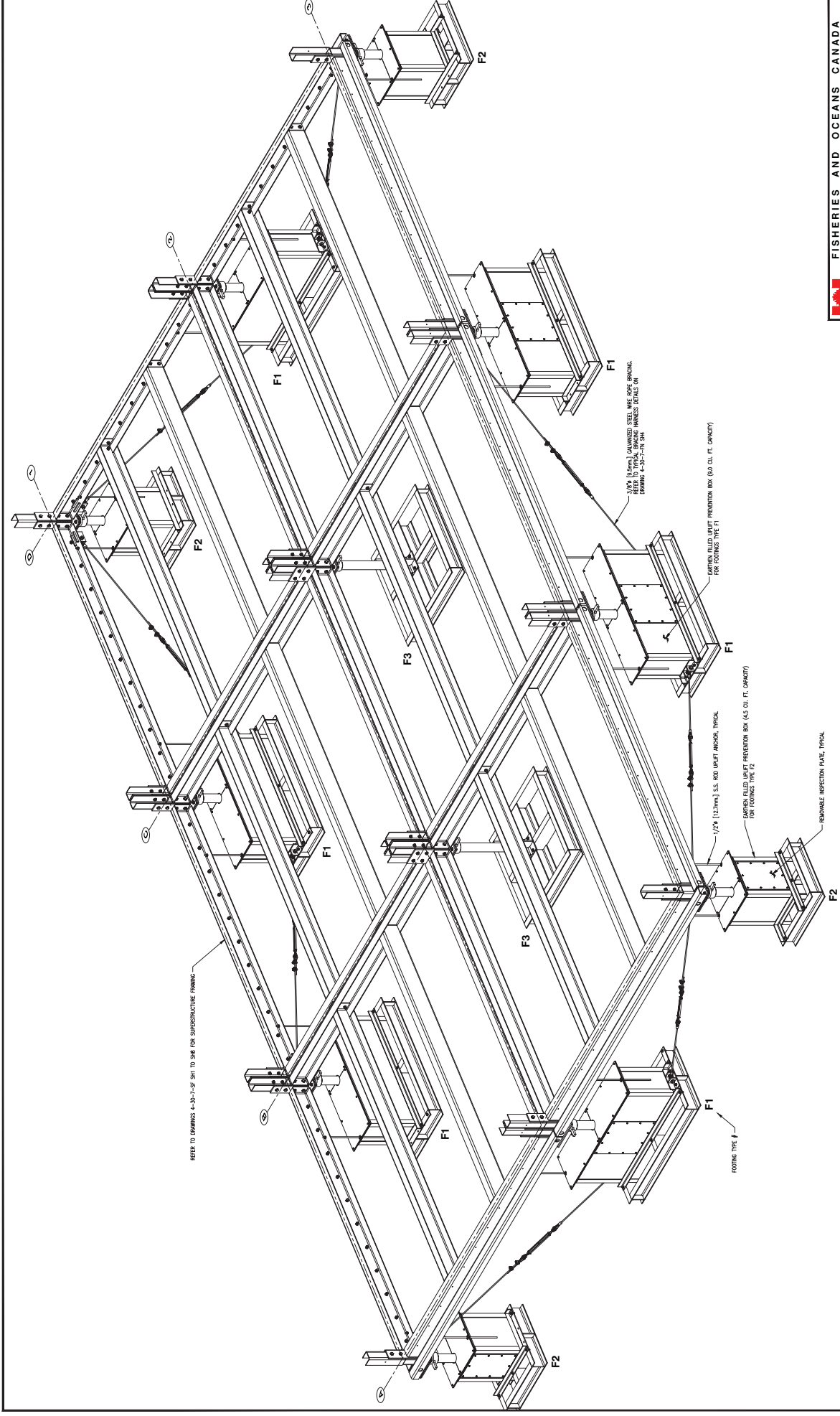
SECTION
SCALE 1:16
B SH9

FISHERIES AND OCEANS CANADA
REAL PROPERTY, SAFETY & SECURITY

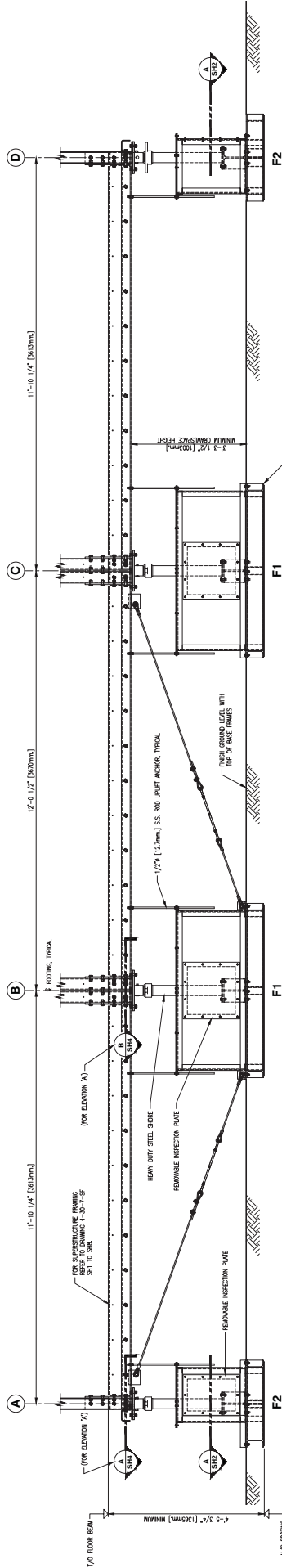
PREFABRICATED BUILDING MODEL 24X24-S1 STRUCTURAL ALUMINUM FRAME EXTERIOR STAIRS PLANS AND SECTIONS	SCALE
	AS NOTED
	DATE
	JULY 5, 2013 DWG. NUMBER SHEET 9 4304-SF SIZE DEVISION

[illegible]

DWG. NO.	DRAWING REFERENCES	NOTES
		1. FOR GENERAL NOTES AND LEGEND REFER TO DRAWING 4-30-6-2P SH1.



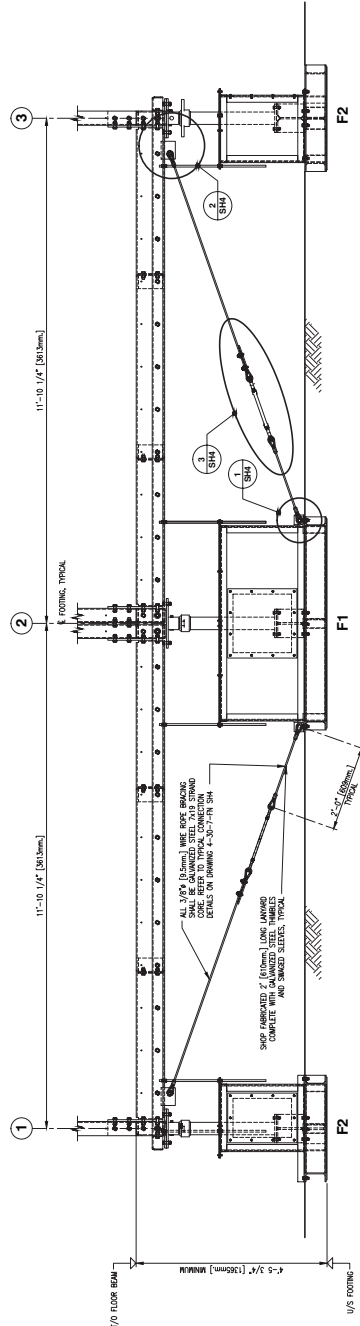
DWG. NO.	DRAWING REFERENCES	NOTES	FOR TENDER ONLY. NOT FOR CONSTRUCTION.										PREFABRICATED BUILDING MODEL 24X36-S1 ALUMINUM FOUNDATION 3D GENERAL ARRANGEMENT FLOOR FRAMING AND FOOTINGS																																																										
1. FOR GENERAL NOTES, LEGEND AND DRAWING INDEX REFER TO DRAWING 4-30-7-SF SH1.																						LEGEND										SCALE																																							
																						DESIGNED BY: G. Reinhardt CHECKED BY:										Using DWG. NO.										NONE																													
																																DATE										OCT. 24, 2013.																													
																																RECOMMENDED										DWG. NUMBER										SHEET NO.																			
																																APPROVED										4-30-7-FN										10																			
																																NOV. 16, 2013										ISSUED ONLY FOR TENDER PURPOSES, NOT FOR CONSTRUCTION.										REVISION										D									
																																NO.										DATE										REVISED										A									
																																APPROVED																																							



ELEVATION A
SCALE 1:16
(AS SHOWN NEAR BAULE '3')

ELEVATION B
(SAME AS ELEVATION 'A' EXCEPT
OPPOSITE HAND NEAR BAULE '1')

ALL STEEL SHORES SHALL BE:
HEAVY DUTY SHORES SHALL BE 12\"/>



ELEVATION C
SCALE 1:16
(AS SHOWN NEAR BAULE '3')

ELEVATION D
(SAME AS ELEVATION 'C' EXCEPT
OPPOSITE HAND NEAR BAULE '3')

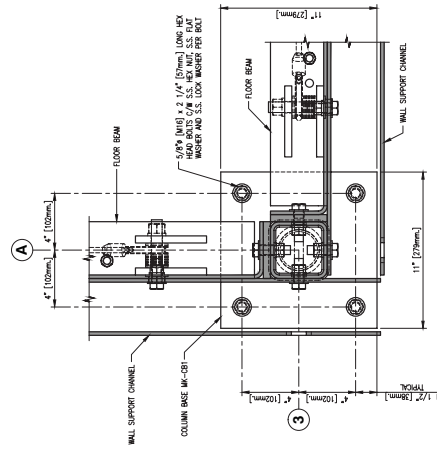
SECTION E
SCALE 1:16
SHZ

SCALE	1:16
DATE	OCT. 24, 2013
DWG. NUMBER	4-30-7-FN
SHEET	10
REVISION	D

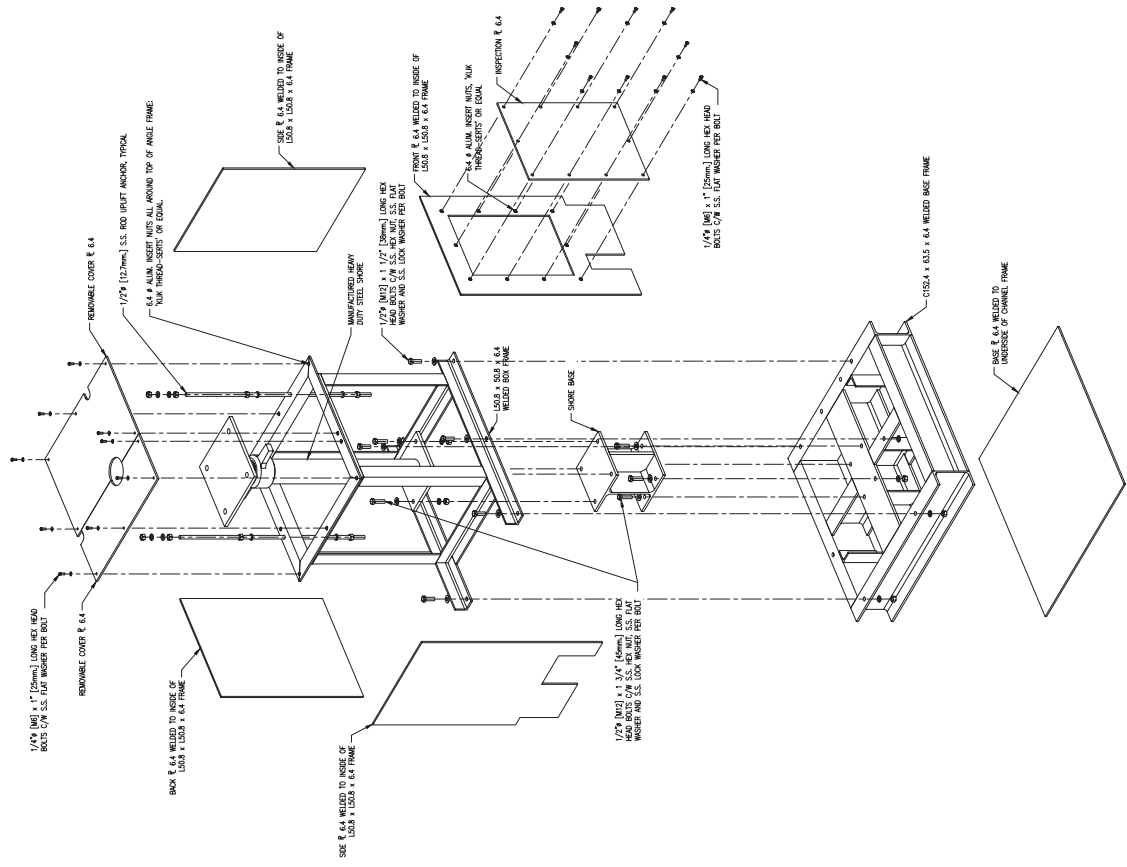
DESIGNED	M. Liang
DRAWN	A. MacPherson
CHECKED	
RECOMMENDED	
APPROVED	
NO.	DATE
Δ	NOV. 18, 2013

DWG. NO.	DRAWING REFERENCES	NOTES	REVISIONS
		1. FOR GENERAL NOTES, LEGEND AND DRAWING INDEX REFER TO DRAWING 4-30-7-SF SH.	

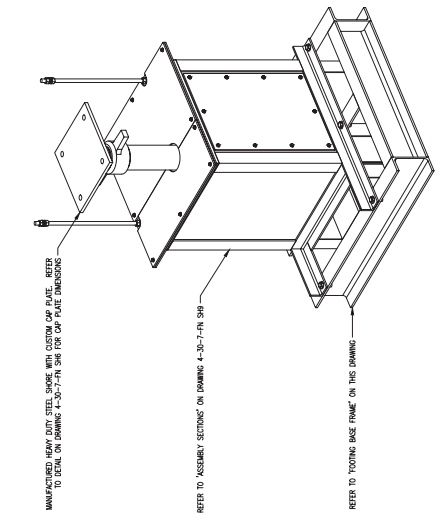
**FOR TENDER ONLY.
NOT FOR CONSTRUCTION.**



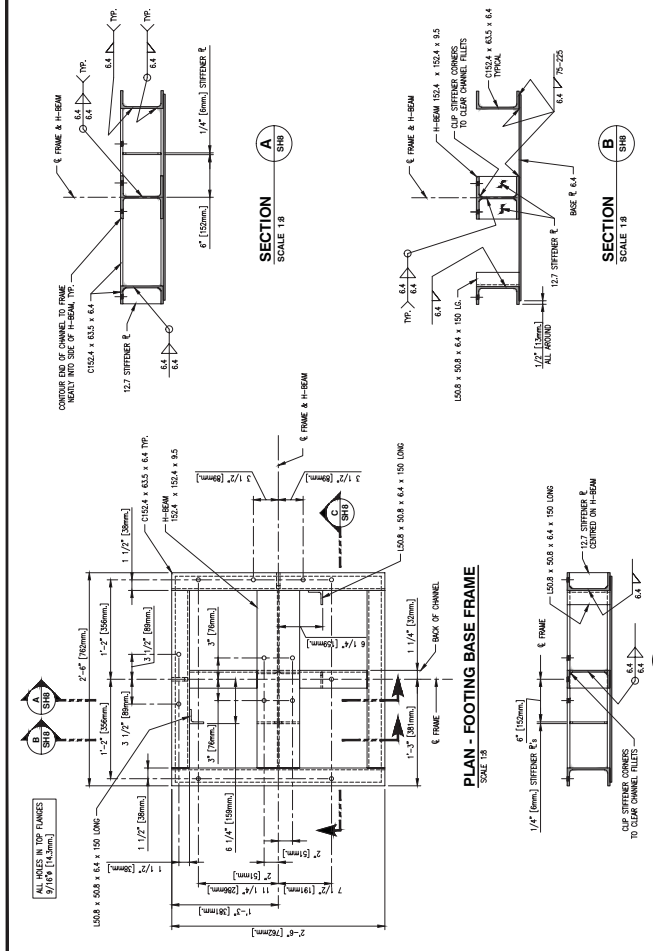
REVISION	6
----------	---



3D EXPLODED ASSEMBLY



3D COMPLETE ASSEMBLY

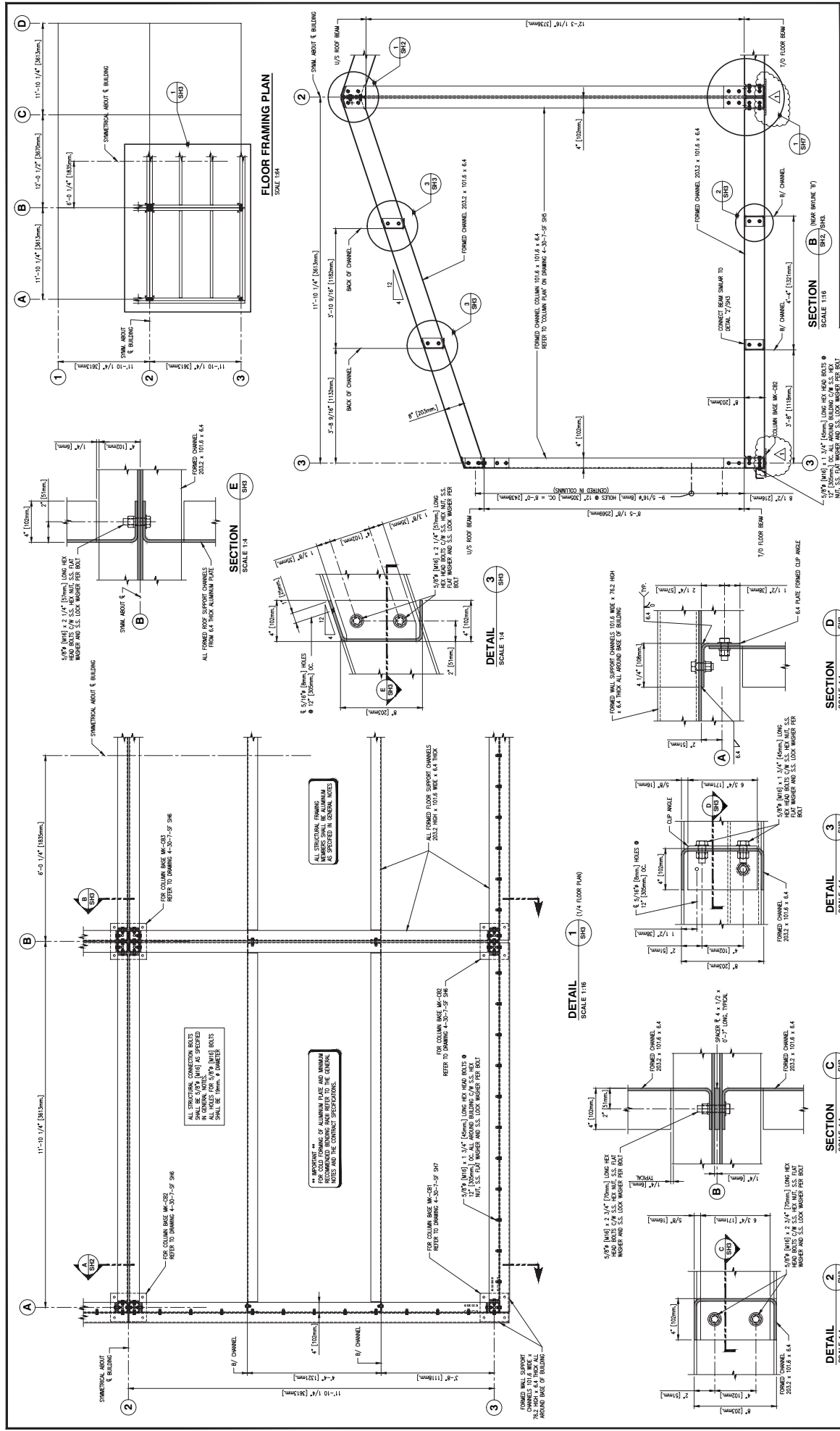


PLAN - FOOTING BASE FRAME

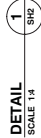
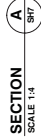
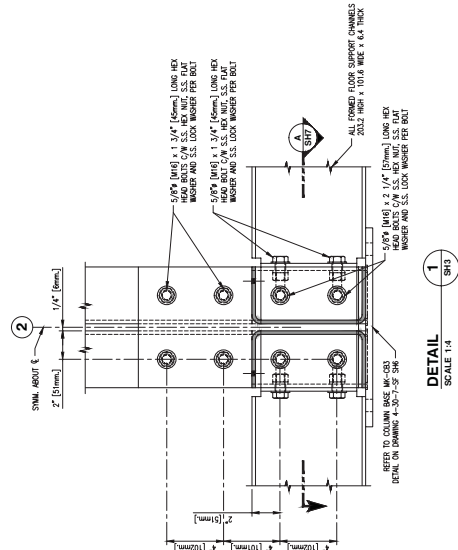
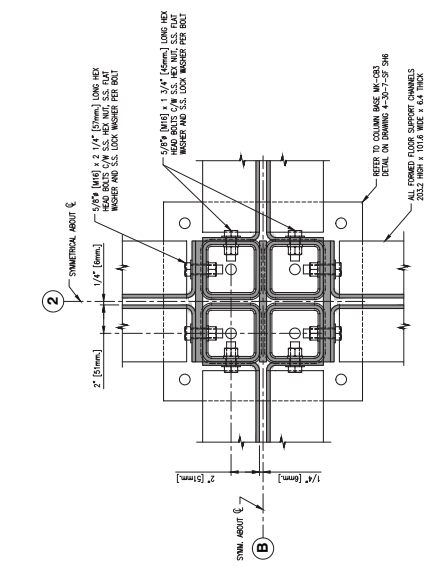
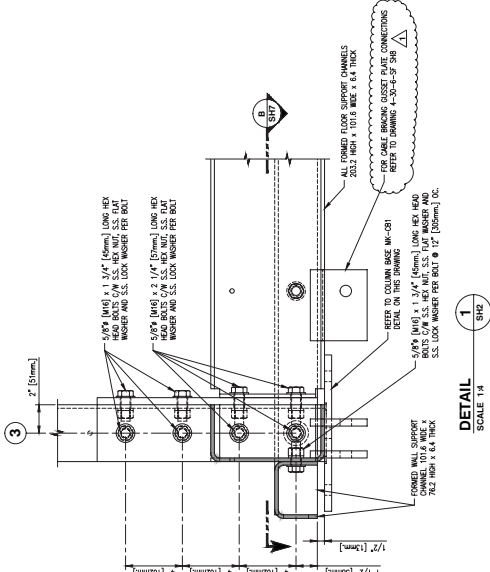
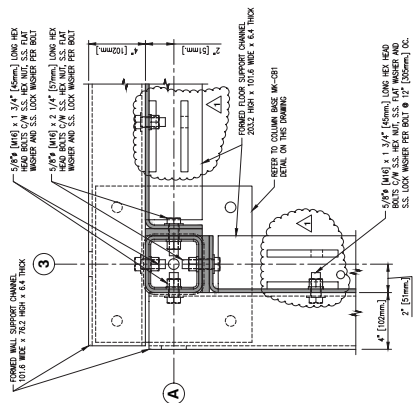
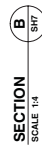
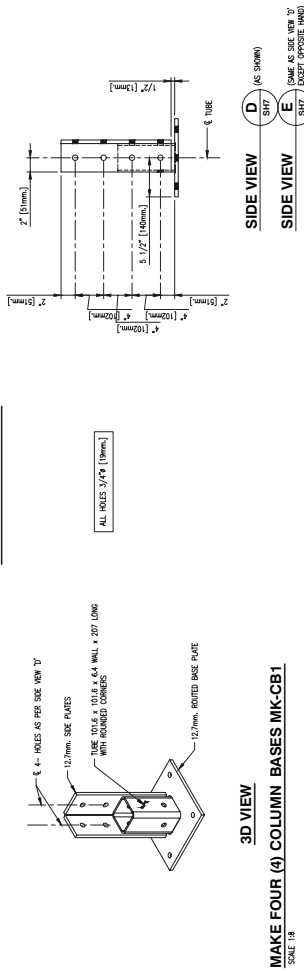
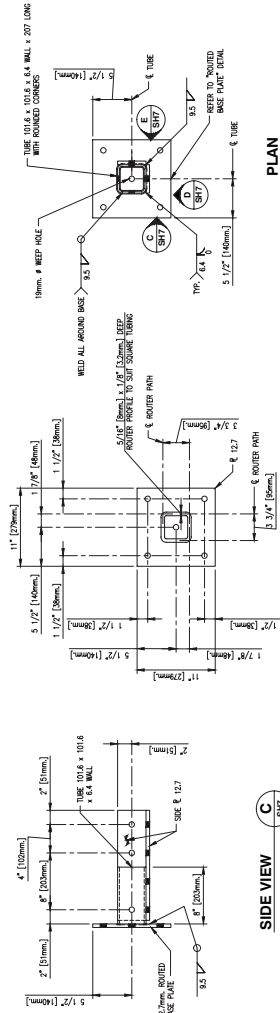
SECTION 1B

SECTION 1B

	FOR TENDER ONLY. NOT FOR CONSTRUCTION.	1. FOR GENERAL NOTES, LEGEND AND DRAWING INDEX REFER TO DRAWING 4-30-7-FP SH1.	DRAWING REFERENCES	WCS. NO.	NOTES	REVISION	DATE	NO.	DATE	NO.	DATE	NO.	DATE	NO.	DATE	NO.	DATE	NO.	DATE	NO.	DATE	NO.	DATE	NO.	DATE	NO.	DATE	NO.	DATE	NO.	DATE	NO.	DATE	NO.	DATE	NO.	DATE	NO.	DATE	NO.	DATE	NO.	DATE	NO.	DATE	NO.	DATE	NO.	DATE	NO.	DATE	NO.	DATE	NO.	DATE	NO.	DATE	NO.	DATE	NO.	DATE	NO.	DATE	NO.	DATE	NO.	DATE	NO.	DATE	NO.	DATE	NO.	DATE	NO.	DATE	NO.	DATE	NO.	DATE	NO.	DATE	NO.	DATE	NO.	DATE	NO.	DATE	NO.	DATE	NO.	DATE	NO.	DATE	NO.	DATE	NO.	DATE	NO.	DATE	NO.	DATE	NO.	DATE	NO.	DATE	NO.	DATE	NO.	DATE	NO.	DATE	NO.	DATE	NO.	DATE	NO.	DATE	NO.	DATE	NO.	DATE	NO.	DATE	NO.	DATE	NO.	DATE	NO.	DATE	NO.	DATE	NO.	DATE	NO.	DATE	NO.	DATE	NO.	DATE	NO.	DATE	NO.	DATE	NO.	DATE	NO.	DATE	NO.	DATE	NO.	DATE	NO.	DATE	NO.	DATE	NO.	DATE	NO.	DATE	NO.	DATE	NO.	DATE	NO.	DATE	NO.	DATE	NO.	DATE	NO.	DATE	NO.	DATE	NO.	DATE	NO.	DATE	NO.	DATE	NO.	DATE	NO.	DATE	NO.	DATE	NO.	DATE	NO.	DATE	NO.	DATE	NO.	DATE	NO.	DATE	NO.	DATE	NO.	DATE	NO.	DATE	NO.	DATE	NO.	DATE	NO.	DATE	NO.	DATE	NO.	DATE	NO.	DATE	NO.	DATE	NO.	DATE	NO.	DATE	NO.	DATE	NO.	DATE	NO.	DATE	NO.	DATE	NO.	DATE	NO.	DATE	NO.	DATE	NO.	DATE	NO.	DATE	NO.	DATE	NO.	DATE	NO.	DATE	NO.	DATE	NO.	DATE	NO.	DATE	NO.	DATE	NO.	DATE	NO.	DATE	NO.	DATE	NO.	DATE	NO.	DATE	NO.	DATE	NO.	DATE	NO.	DATE	NO.	DATE	NO.	DATE	NO.	DATE	NO.	DATE	NO.	DATE	NO.	DATE	NO.	DATE	NO.	DATE	NO.	DATE	NO.	DATE	NO.	DATE	NO.	DATE	NO.	DATE	NO.	DATE	NO.	DATE	NO.	DATE	NO.	DATE	NO.	DATE	NO.	DATE	NO.	DATE	NO.	DATE	NO.	DATE	NO.	DATE	NO.	DATE	NO.	DATE	NO.	DATE	NO.	DATE	NO.	DATE	NO.	DATE	NO.	DATE	NO.	DATE	NO.	DATE	NO.	DATE	NO.	DATE	NO.	DATE	NO.	DATE	NO.	DATE	NO.	DATE	NO.	DATE	NO.	DATE	NO.	DATE	NO.	DATE	NO.	DATE	NO.	DATE	NO.	DATE	NO.	DATE	NO.	DATE	NO.	DATE	NO.	DATE	NO.	DATE	NO.	DATE	NO.	DATE	NO.	DATE	NO.	DATE	NO.	DATE	NO.	DATE	NO.	DATE	NO.	DATE	NO.	DATE	NO.	DATE	NO.	DATE	NO.	DATE	NO.	DATE	NO.	DATE	NO.	DATE	NO.	DATE	NO.	DATE	NO.	DATE	NO.	DATE	NO.	DATE	NO.	DATE	NO.	DATE	NO.	DATE	NO.	DATE	NO.	DATE	NO.	DATE	NO.	DATE	NO.	DATE	NO.	DATE	NO.	DATE	NO.	DATE	NO.	DATE	NO.	DATE	NO.	DATE	NO.	DATE	NO.	DATE	NO.	DATE	NO.	DATE	NO.	DATE	NO.	DATE	NO.	DATE	NO.	DATE	NO.	DATE	NO.	DATE	NO.	DATE	NO.	DATE	NO.	DATE	NO.	DATE	NO.	DATE	NO.	DATE	NO.	DATE	NO.	DATE	NO.	DATE	NO.	DATE	NO.	DATE	NO.	DATE	NO.	DATE	NO.	DATE	NO.	DATE	NO.	DATE	NO.	DATE	NO.	DATE	NO.	DATE	NO.	DATE	NO.	DATE	NO.	DATE	NO.	DATE	NO.	DATE	NO.	DATE	NO.	DATE	NO.	DATE	NO.	DATE	NO.	DATE	NO.	DATE	NO.	DATE	NO.	DATE	NO.	DATE	NO.	DATE	NO.	DATE	NO.	DATE	NO.	DATE	NO.	DATE	NO.	DATE	NO.	DATE	NO.	DATE	NO.	DATE	NO.	DATE	NO.	DATE	NO.	DATE	NO.	DATE	NO.	DATE	NO.	DATE	NO.	DATE	NO.	DATE	NO.	DATE	NO.	DATE	NO.	DATE	NO.	DATE	NO.	DATE	NO.	DATE	NO.	DATE	NO.	DATE	NO.	DATE	NO.	DATE	NO.	DATE	NO.	DATE	NO.	DATE	NO.	DATE	NO.	DATE	NO.	DATE	NO.	DATE	NO.	DATE	NO.	DATE	NO.	DATE	NO.	DATE	NO.	DATE	NO.	DATE	NO.	DATE	NO.	DATE	NO.	DATE	NO.	DATE	NO.	DATE	NO.	DATE	NO.	DATE	NO.	DATE	NO.	DATE	NO.	DATE	NO.	DATE	NO.	DATE	NO.	DATE	NO.	DATE	NO.	DATE	NO.	DATE	NO.	DATE	NO.	DATE	NO.	DATE	NO.	DATE	NO.	DATE	NO.	DATE	NO.	DATE	NO.	DATE	NO.	DATE	NO.	DATE	NO.	DATE	NO.	DATE	NO.	DATE	NO.	DATE	NO.	DATE	NO.	DATE	NO.	DATE	NO.	DATE	NO.	DATE	NO.	DATE	NO.	DATE	NO.	DATE	NO.	DATE	NO.	DATE	NO.	DATE	NO.	DATE	NO.	DATE	NO.	DATE	NO.	DATE	NO.	DATE	NO.	DATE	NO.	DATE	NO.	DATE	NO.	DATE	NO.	DATE	NO.	DATE	NO.	DATE	NO.	DATE	NO.	DATE	NO.	DATE	NO.	DATE	NO.	DATE	NO.	DATE	NO.	DATE	NO.	DATE	NO.	DATE	NO.	DATE	NO.	DATE	NO.	DATE	NO.	DATE	NO.	DATE	NO.	DATE	NO.	DATE	NO.	DATE	NO.	DATE	NO.	DATE	NO.	DATE	NO.	DATE	NO.	DATE	NO.	DATE	NO.	DATE	NO.	DATE	NO.	DATE	NO.	DATE	NO.	DATE	NO.	DATE	NO.	DATE	NO.	DATE	NO.	DATE	NO.	DATE	NO.	DATE	NO.	DATE	NO.	DATE	NO.	DATE	NO.	DATE	NO.	DATE	NO.	DATE	NO.	DATE	NO.	DATE	NO.	DATE	NO.	DATE	NO.	DATE	NO.	DATE	NO.	DATE	NO.	DATE	NO.	DATE	NO.	DATE	NO.	DATE	NO.	DATE	NO.	DATE	NO.	DATE	NO.	DATE	NO.	DATE	NO.	DATE	NO.	DATE	NO.	DATE	NO.	DATE	NO.	DATE	NO.	DATE	NO.	DATE	NO.	DATE	NO.	DATE	NO.	DATE	NO.	DATE	NO.	DATE	NO.	DATE	NO.	DATE	NO.	DATE	NO.	DATE	NO.	DATE	NO.	DATE	NO.	DATE	NO.	DATE	NO.	DATE	NO.	DATE	NO.	DATE	NO.	DATE	NO.	DATE	NO.	DATE	NO.	DATE	NO.	DATE	NO.	DATE	NO.	DATE	NO.	DATE	NO.	DATE	NO.	DATE	NO.	DATE	NO.	DATE	NO.	DATE	NO.	DATE	NO.	DATE	NO.	DATE	NO.	DATE	NO.	DATE	NO.	DATE	NO.	DATE	NO.	DATE	NO.	DATE	NO.	DATE	NO.	DATE	NO.	DATE	NO.	DATE	NO.	DATE	NO.	DATE	NO.	DATE	NO.	DATE	NO.	DATE	NO.	DATE	NO.	DATE	NO.	DATE	NO.	DATE	NO.	DATE	NO.	DATE	NO.	DATE	NO.	DATE	NO.	DATE	NO.	DATE	NO.	DATE	NO.	DATE	NO.	DATE	NO.	DATE	NO.	DATE	NO.	DATE	NO.	DATE	NO.	DATE	NO.	DATE	NO.	DATE	NO.	DATE	NO.	DATE	NO.
--	---	--	--------------------	----------	-------	----------	------	-----	------	-----	------	-----	------	-----	------	-----	------	-----	------	-----	------	-----	------	-----	------	-----	------	-----	------	-----	------	-----	------	-----	------	-----	------	-----	------	-----	------	-----	------	-----	------	-----	------	-----	------	-----	------	-----	------	-----	------	-----	------	-----	------	-----	------	-----	------	-----	------	-----	------	-----	------	-----	------	-----	------	-----	------	-----	------	-----	------	-----	------	-----	------	-----	------	-----	------	-----	------	-----	------	-----	------	-----	------	-----	------	-----	------	-----	------	-----	------	-----	------	-----	------	-----	------	-----	------	-----	------	-----	------	-----	------	-----	------	-----	------	-----	------	-----	------	-----	------	-----	------	-----	------	-----	------	-----	------	-----	------	-----	------	-----	------	-----	------	-----	------	-----	------	-----	------	-----	------	-----	------	-----	------	-----	------	-----	------	-----	------	-----	------	-----	------	-----	------	-----	------	-----	------	-----	------	-----	------	-----	------	-----	------	-----	------	-----	------	-----	------	-----	------	-----	------	-----	------	-----	------	-----	------	-----	------	-----	------	-----	------	-----	------	-----	------	-----	------	-----	------	-----	------	-----	------	-----	------	-----	------	-----	------	-----	------	-----	------	-----	------	-----	------	-----	------	-----	------	-----	------	-----	------	-----	------	-----	------	-----	------	-----	------	-----	------	-----	------	-----	------	-----	------	-----	------	-----	------	-----	------	-----	------	-----	------	-----	------	-----	------	-----	------	-----	------	-----	------	-----	------	-----	------	-----	------	-----	------	-----	------	-----	------	-----	------	-----	------	-----	------	-----	------	-----	------	-----	------	-----	------	-----	------	-----	------	-----	------	-----	------	-----	------	-----	------	-----	------	-----	------	-----	------	-----	------	-----	------	-----	------	-----	------	-----	------	-----	------	-----	------	-----	------	-----	------	-----	------	-----	------	-----	------	-----	------	-----	------	-----	------	-----	------	-----	------	-----	------	-----	------	-----	------	-----	------	-----	------	-----	------	-----	------	-----	------	-----	------	-----	------	-----	------	-----	------	-----	------	-----	------	-----	------	-----	------	-----	------	-----	------	-----	------	-----	------	-----	------	-----	------	-----	------	-----	------	-----	------	-----	------	-----	------	-----	------	-----	------	-----	------	-----	------	-----	------	-----	------	-----	------	-----	------	-----	------	-----	------	-----	------	-----	------	-----	------	-----	------	-----	------	-----	------	-----	------	-----	------	-----	------	-----	------	-----	------	-----	------	-----	------	-----	------	-----	------	-----	------	-----	------	-----	------	-----	------	-----	------	-----	------	-----	------	-----	------	-----	------	-----	------	-----	------	-----	------	-----	------	-----	------	-----	------	-----	------	-----	------	-----	------	-----	------	-----	------	-----	------	-----	------	-----	------	-----	------	-----	------	-----	------	-----	------	-----	------	-----	------	-----	------	-----	------	-----	------	-----	------	-----	------	-----	------	-----	------	-----	------	-----	------	-----	------	-----	------	-----	------	-----	------	-----	------	-----	------	-----	------	-----	------	-----	------	-----	------	-----	------	-----	------	-----	------	-----	------	-----	------	-----	------	-----	------	-----	------	-----	------	-----	------	-----	------	-----	------	-----	------	-----	------	-----	------	-----	------	-----	------	-----	------	-----	------	-----	------	-----	------	-----	------	-----	------	-----	------	-----	------	-----	------	-----	------	-----	------	-----	------	-----	------	-----	------	-----	------	-----	------	-----	------	-----	------	-----	------	-----	------	-----	------	-----	------	-----	------	-----	------	-----	------	-----	------	-----	------	-----	------	-----	------	-----	------	-----	------	-----	------	-----	------	-----	------	-----	------	-----	------	-----	------	-----	------	-----	------	-----	------	-----	------	-----	------	-----	------	-----	------	-----	------	-----	------	-----	------	-----	------	-----	------	-----	------	-----	------	-----	------	-----	------	-----	------	-----	------	-----	------	-----	------	-----	------	-----	------	-----	------	-----	------	-----	------	-----	------	-----	------	-----	------	-----	------	-----	------	-----	------	-----	------	-----	------	-----	------	-----	------	-----	------	-----	------	-----	------	-----	------	-----	------	-----	------	-----	------	-----	------	-----	------	-----	------	-----	------	-----	------	-----	------	-----	------	-----	------	-----	------	-----	------	-----	------	-----	------	-----	------	-----	------	-----	------	-----	------	-----	------	-----	------	-----	------	-----	------	-----	------	-----	------	-----	------	-----	------	-----	------	-----	------	-----	------	-----	------	-----	------	-----	------	-----	------	-----	------	-----	------	-----	------	-----	------	-----	------	-----	------	-----	------	-----	------	-----	------	-----	------	-----	------	-----	------	-----	------	-----	------	-----	------	-----	------	-----	------	-----	------	-----	------	-----	------	-----	------	-----	------	-----	------	-----	------	-----	------	-----	------	-----	------	-----	------	-----	------	-----	------	-----	------	-----	------	-----	------	-----	------	-----	------	-----	------	-----	------	-----	------	-----	------	-----	------	-----	------	-----	------	-----	------	-----	------	-----	------	-----	------	-----	------	-----	------	-----	------	-----	------	-----	------	-----	------	-----	------	-----	------	-----	------	-----	------	-----	------	-----	------	-----	------	-----	------	-----	------	-----	------	-----	------	-----	------	-----	------	-----	------	-----	------	-----	------	-----	------	-----	------	-----	------	-----	------	-----	------	-----	------	-----	------	-----	------	-----	------	-----	------	-----	------	-----	------	-----	------	-----	------	-----	------	-----	------	-----

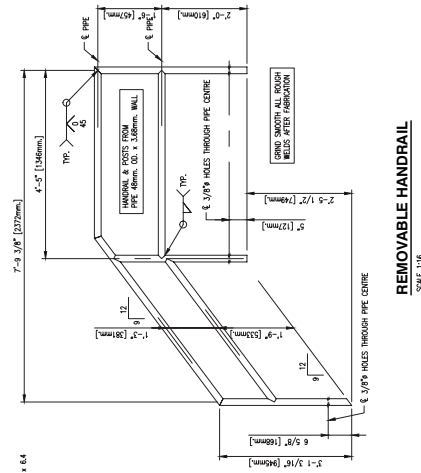
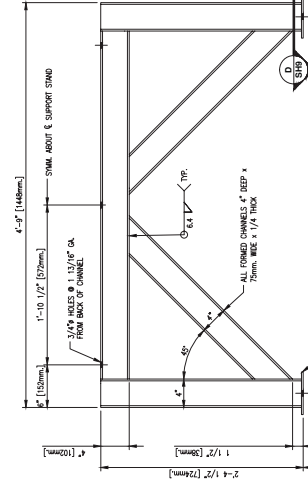
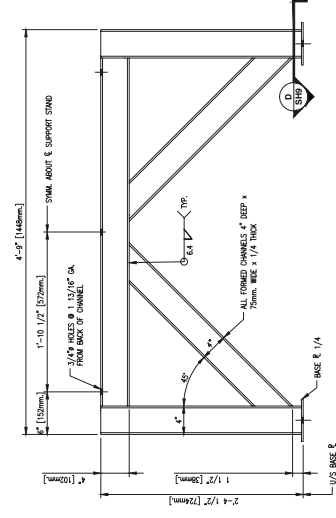
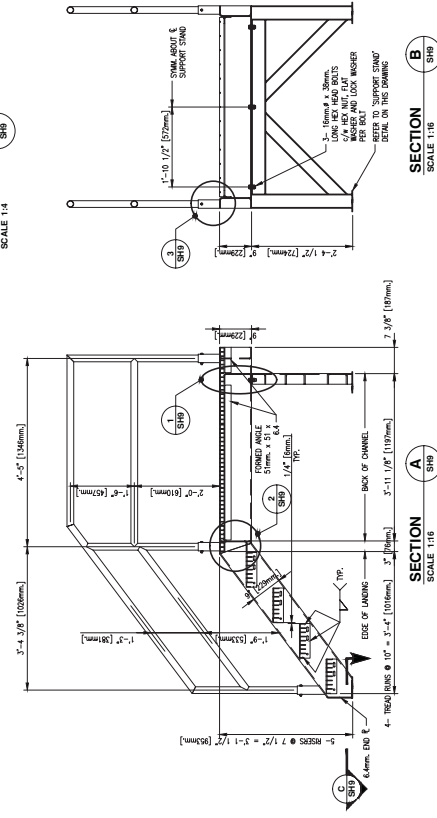
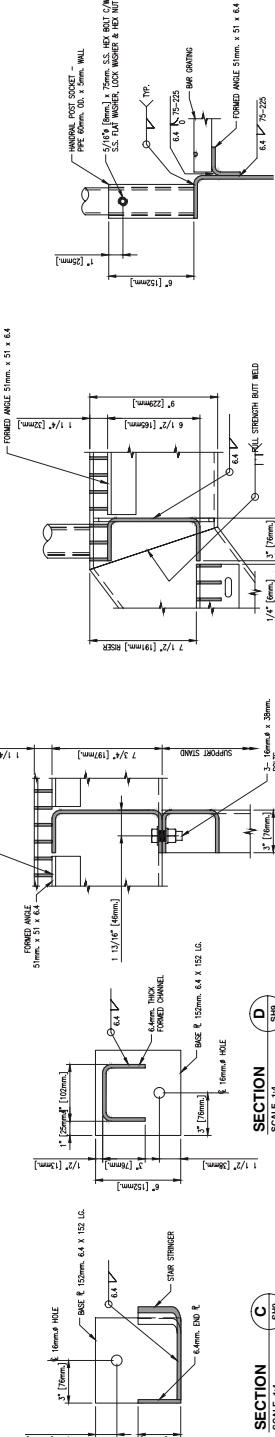
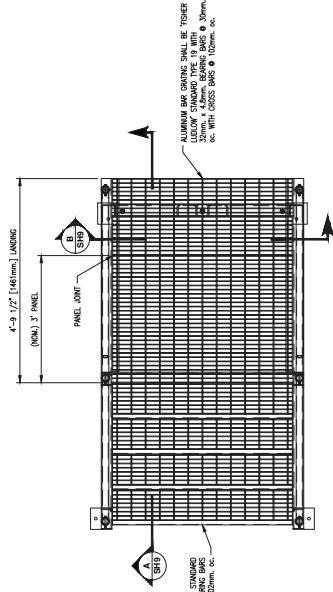
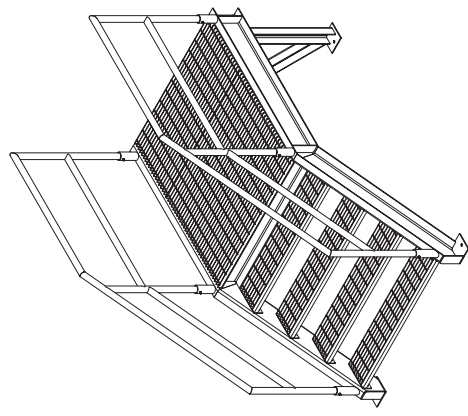


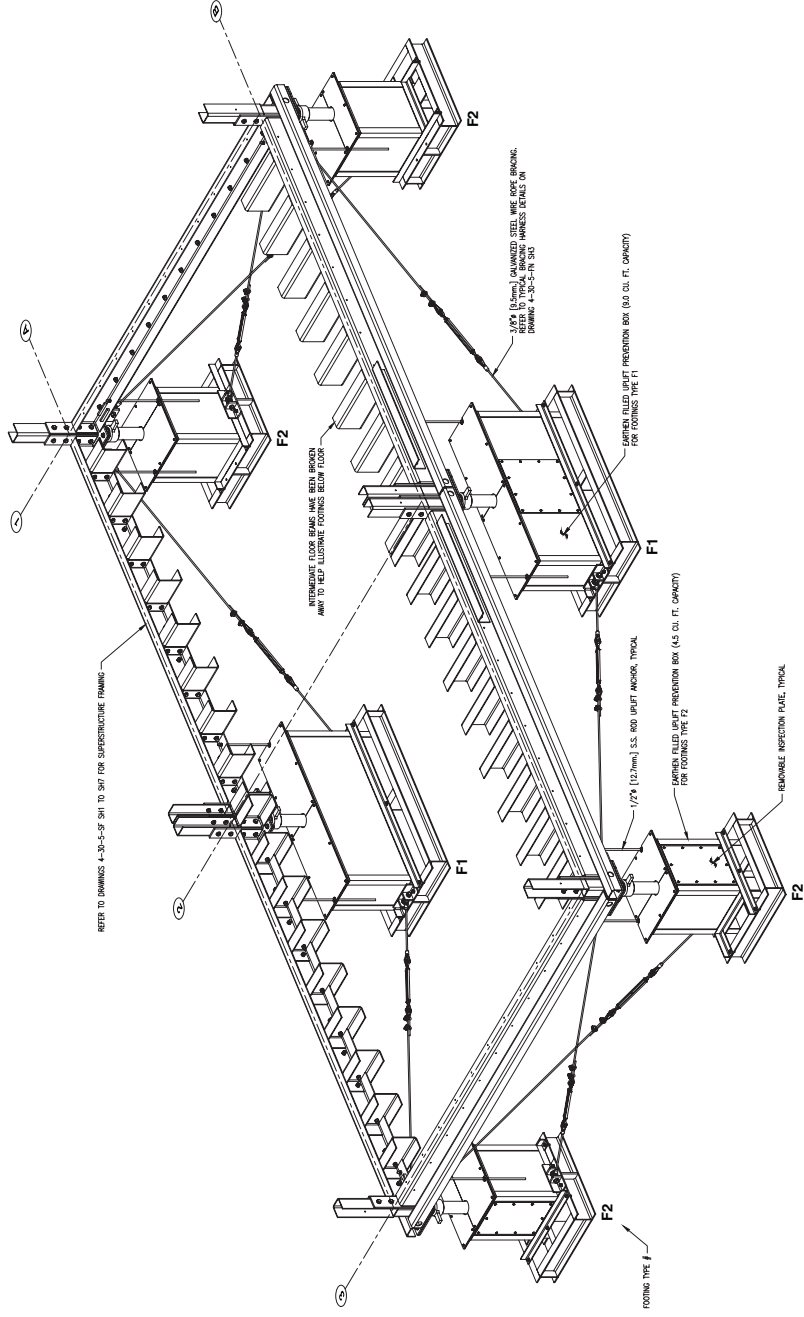
FOR TENDER ONLY.
NOT FOR CONSTRUCTION.



FOR TENDER ONLY.
NOT FOR CONSTRUCTION.

1. FOR GENERAL NOTES AND LEGEND REFER TO DRAWING 4-30-7-SF SHL		<div>FOR TENDER ONLY. NOT FOR CONSTRUCTION.</div>								<div>DESIGNED M. Liang</div> <div>CHECKED G. Reichhardt</div>		<div>SCALE AS SHOWN</div> <div>DATE JULY 5, 2013</div>		<div>REAL PROPERTY, SECURITY & SAFETY</div> <div>PREFABRICATED BUILDING MODEL 24X36-S1 STRUCTURAL ALUMINUM FRAME COLUMN BASE MK-CB1 SECTIONS AND DETAILS</div>			
										<div>NOV. 18, 2013</div> <div>APPROVED DATE SEPT. 16, 2013</div>		<div>RECOMMENDED DATE APPROVED</div> <div>ALL COLUMN BASE PLATE SIZES DERIVED. CABLE BRACING CLOSET PLATE CONNECTIONS ADDED FOR DETAIL 17/502 AND SECTION 17/501. BASED ONLY FOR TENDERING PURPOSES. NOT FOR CONSTRUCTION.</div>				<div>DWG. NO.</div> <div>DRAWING REFERENCES</div>	
																<div>4-30-7-SF D</div> <div>7/2/19</div> <div>REVISION A</div>	





1. FOR GENERAL NOTES, LEGEND AND DRAWING INDEX REFER TO DRAWING 4-30-5-SF SH1.

FOR TENDER ONLY.
NOT FOR CONSTRUCTION.

DWG. NO. DRAWING REFERENCES

NOTES

NO. DATE REVISIONS

DESIGNED BY
DRAWN BY
CHECKED BY
RECOMMENDED BY
APPROVED BY

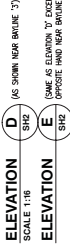
M. Liang
A. Liang
A. Liang
A. Liang
A. Liang

NOV. 16, 2013
NOV. 16, 2013
NOV. 16, 2013
NOV. 16, 2013
NOV. 16, 2013

USED ONLY FOR TENDER PURPOSES, NOT FOR CONSTRUCTION.

(SUBSTITUTIONS WILL BE CONSIDERED AND ARE SUBJECT TO
APPROVAL BY THE OWNER'S ENGINEER)
THE SHORES SHALL BE SUPPLIED WITH CUSTOMIZED TOP
PLATE TO MATCH COLUMN BASES. REFER TO SHORE DETAIL
ON DRAWING 4-30-S-FN SHE.

PHONE: (405)528-4671
TOLL FREE: (800)654-8311
FAX: (405)528-1706



**FOR TENDER ONLY.
NOT FOR CONSTRUCTION.**

1. FOR GENERAL NOTES, LEGEND AND DRAWING INDEX REFER TO DRAWING 4-30-5-SF SH1.

DRAWING REFERENCES

NOTES

NO.	DATE	REVISIONS
-----	------	-----------

APPROVED	
----------	--

 **FISHERIES AND OCEANS CANADA**
REAL PROPERTY, SAFETY & SECURITY

**PREFABRICATED BUILDING
MODEL 12X24-S1
ALUMINUM FOUNDATION
FOOTING LAYOUT
AND ELEVATIONS**

DESIGNED
M. Lian

10

1000

10

--	--

10

10

— 10 —

1000

— 10 —

1000

4-30-5-SF SH

EX REFER TO DR

END AND DRAWING

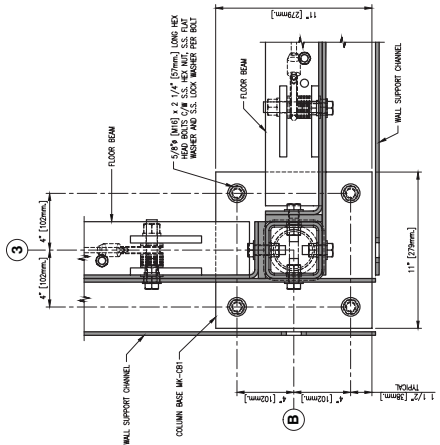
GENERAL NOTES

[illegible]

— 100 —

1000

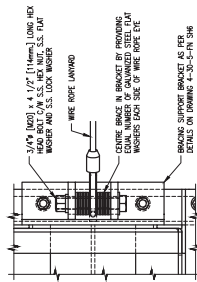
[illegible]



SECTION 3
SCALE 1:4

(A) SH2

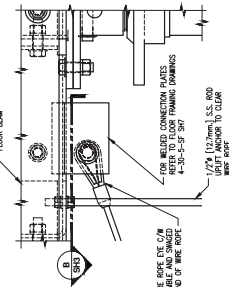
(TYPICAL SHORE CAP PLATE CONNECTION TO INSIDE COLUMN BASE FOR TYPE 17 (FOOTING))



SECTION 4
SCALE 1:4

(A) SH2

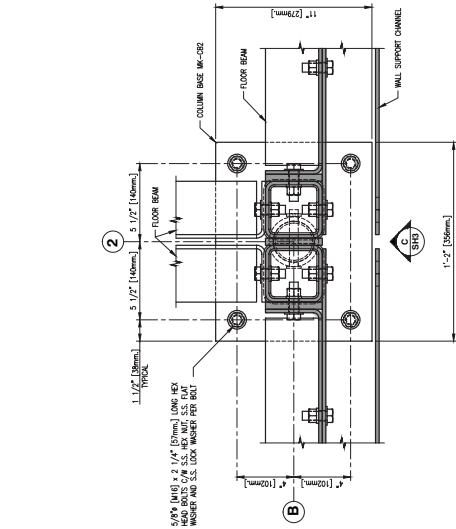
ALL 3/8\"/>



SECTION 5
SCALE 1:4

(A) SH2

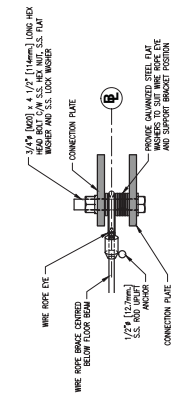
ALL 3/8\"/>



SECTION 6
SCALE 1:4

(B) SH2

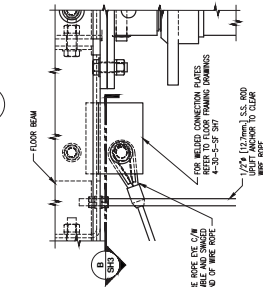
(TYPICAL SHORE CAP PLATE CONNECTION TO INSIDE COLUMN BASE FOR TYPE 17 (FOOTING))



SECTION 7
SCALE 1:4

(B) SH2

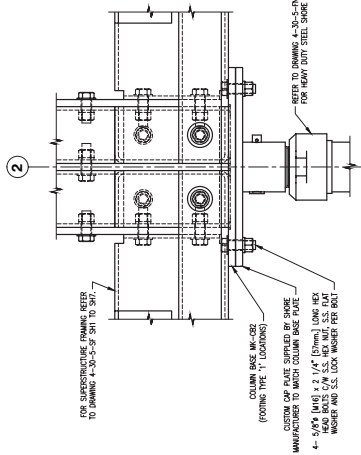
(TYPICAL SHORE CAP PLATE CONNECTION TO INSIDE COLUMN BASE FOR TYPE 17 (FOOTING))



SECTION 8
SCALE 1:4

(B) SH2

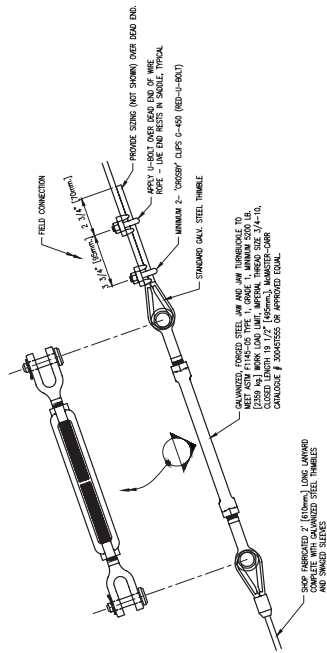
(TYPICAL SHORE CAP PLATE CONNECTION TO INSIDE COLUMN BASE FOR TYPE 17 (FOOTING))



FRONT VIEW
SCALE 1:4

(C) SH2

(TYPICAL SHORE CAP PLATE CONNECTION TO INSIDE COLUMN BASE FOR TYPE 17 (FOOTING))



DETAIL 3
SCALE 1:4

(3) SH2

(TYPICAL SHORE CAP PLATE CONNECTION TO INSIDE COLUMN BASE FOR TYPE 17 (FOOTING))

DETAIL 1
SCALE 1:4

(1) SH2

ALL 3/8\"/>

DETAIL 2
SCALE 1:4

(2) SH2

(TYPICAL SHORE CAP PLATE CONNECTION TO INSIDE COLUMN BASE FOR TYPE 17 (FOOTING))

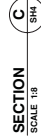
FOR TENDER ONLY.
NOT FOR CONSTRUCTION.

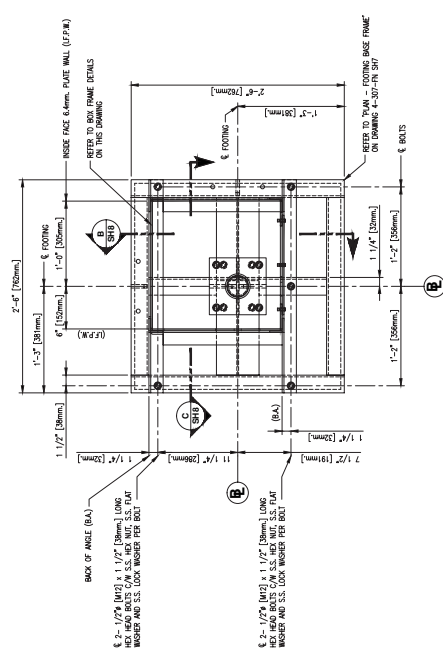
1. FOR GENERAL NOTES, LEGEND AND DRAWING INDEX REFER TO DRAWING 4-30-5-F SH1.

SCALE	AS NOTED
DATE	OCT. 24, 2013
DWG. NUMBER	4-30-5-FN
SHEET	8
REVISION	D

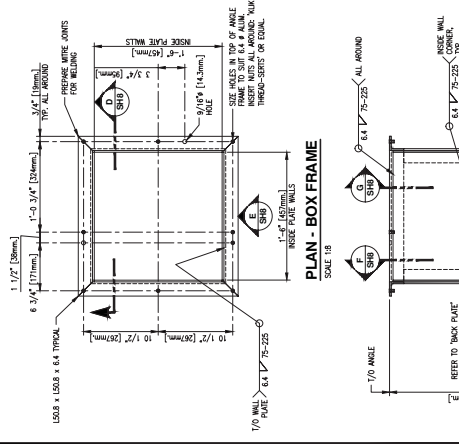
DESIGNED	M. Liang
DRAWN	A. G. G. G.
CHECKED	
RECOMMENDED	
APPROVED	
NO.	DATE
REVISIONS	

DWG. NO.	DRAWING REFERENCES
----------	--------------------

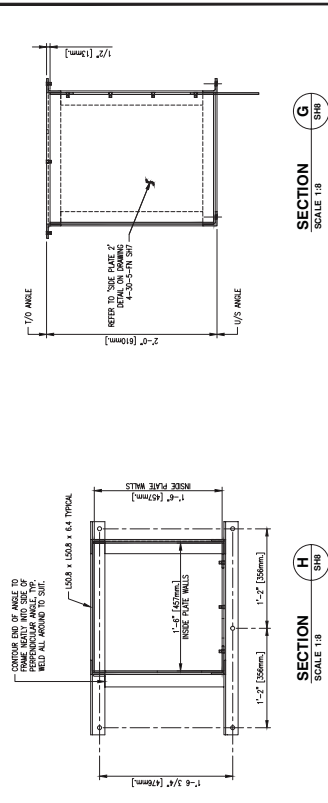




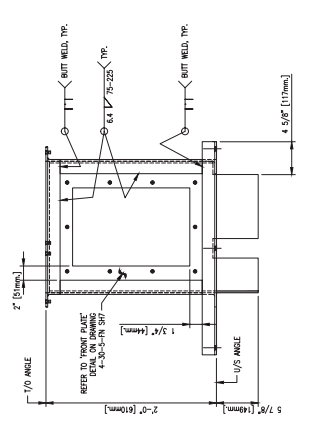
PLAN VIEW - SECTION A (VIEW ROTATED 90°)
SCALE 1:8



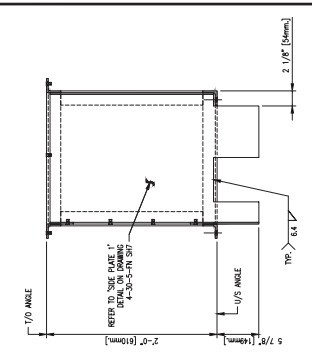
PLAN - BOX FRAME
SCALE 1:8



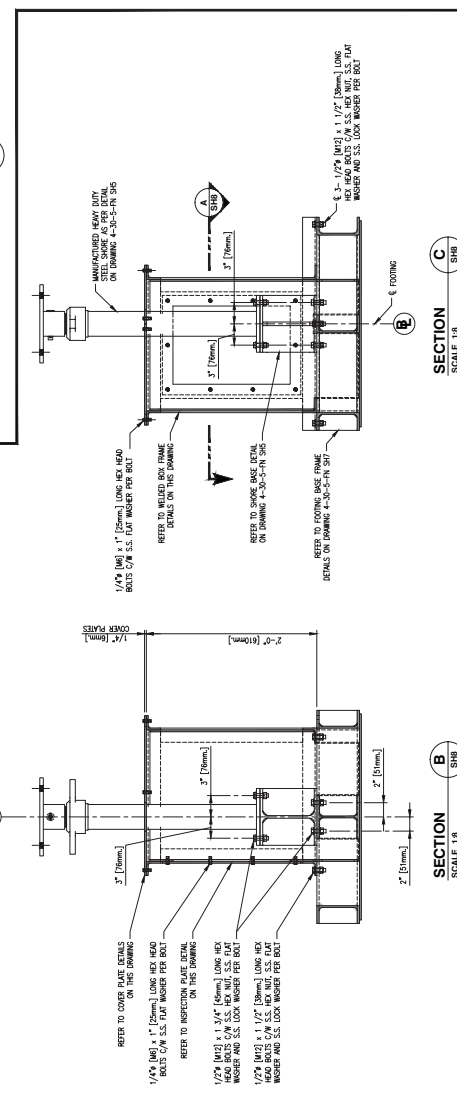
SECTION H
SCALE 1:8



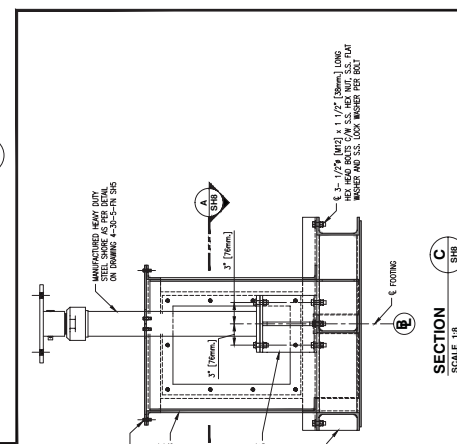
SECTION D
SCALE 1:8



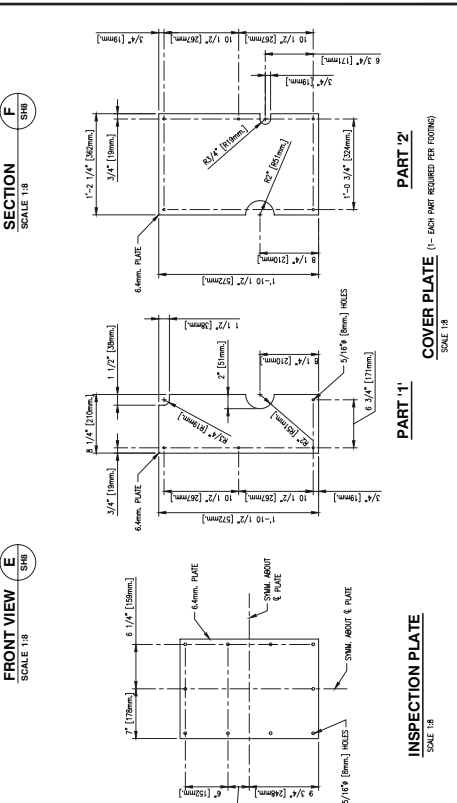
SECTION F
SCALE 1:8



SECTION B
SCALE 1:8



SECTION C
SCALE 1:8



FRONT VIEW
SCALE 1:8

INSPECTION PLATE
SCALE 1:8

PART '1'

PART '2'

COVER PLATE (1- EACH PART REQUIRED PER FOOTING)
SCALE 1:8

FOOTING TYPE F2 - ASSEMBLY SECTIONS

1. FOR GENERAL NOTES, LEGEND AND DRAWING INDEX REFER TO DRAWING 4-30-5-F SH.

FOR TENDER ONLY.
NOT FOR CONSTRUCTION.

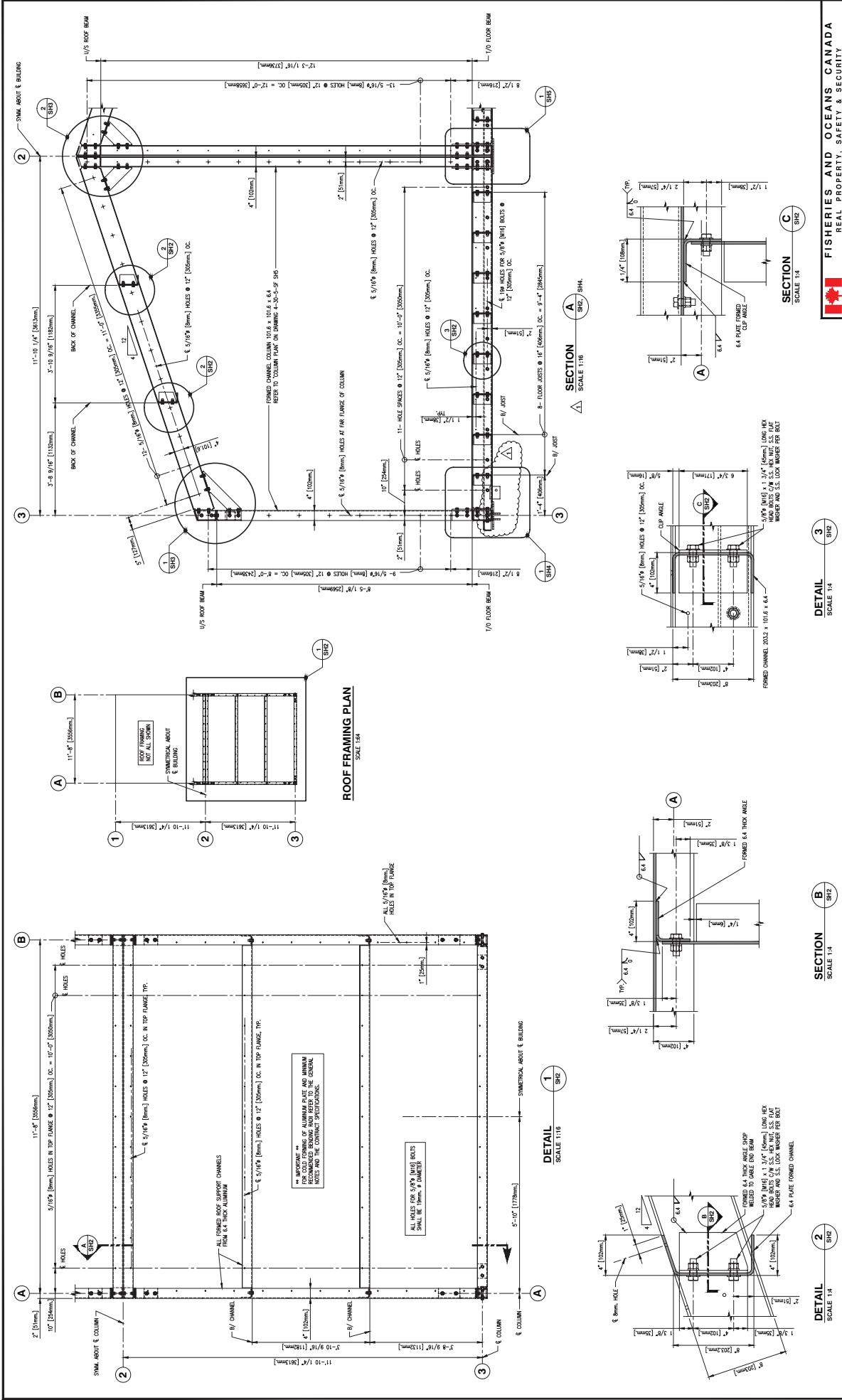
FISHERIES AND OCEANS CANADA
REAL PROPERTY, SAFETY & SECURITY

PREFABRICATED BUILDING
MODEL 12X24-S1
ALUMINUM FOUNDATION
FOOTING TYPE F2
ASSEMBLY SECTIONS AND
FABRICATION DETAILS

DESIGNED M. Liang	CHECKED M. Liang	APPROVED M. Liang
DRAWN M. Liang	REVIEWED M. Liang	APPROVED M. Liang

SCALE AS NOTED	DATE OCT. 24, 2013	DWG. NUMBER 4-30-5-FN	SHEET 8
REVISION D			

DWG. NO.	DRAWING REFERENCES	NO.	DATE	REVISIONS	NO.	DATE	REVISIONS



FOR TENDER ONLY.
NOT FOR CONSTRUCTION.

1. FOR GENERAL NOTES, LEGEND AND DRAWING INDEX REFER TO DRAWING 4-30-5-SF SH.

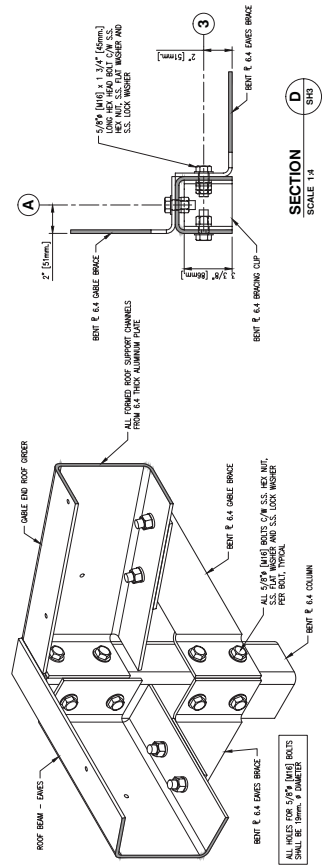
DWG. NO.	DRAWING REFERENCES

NO.	DATE	REVISIONS
1	NOV. 18, 2013	SECTION 4/502, SH. UPDATED TO SHOW GABLE BRACING (SEESET) FOR CORRELATION WITH DRAWING 4-30-5-SF SH.
2	SEP. 18, 2013	ISSUED ONLY FOR TENDER PURPOSES, NOT FOR CONSTRUCTION.

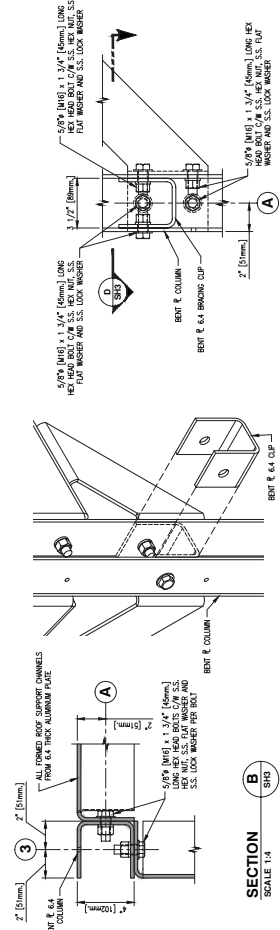
DESIGNED BY M. Liang	CHECKED BY M. Liang	SCALE AS NOTED
DRAWN BY M. Liang	DATE JULY 5, 2013	DWG. NUMBER 4-30-5-SF
REVISION D		SHEET 28

FISHERIES AND OCEANS CANADA
REAL PROPERTY, SAFETY & SECURITY

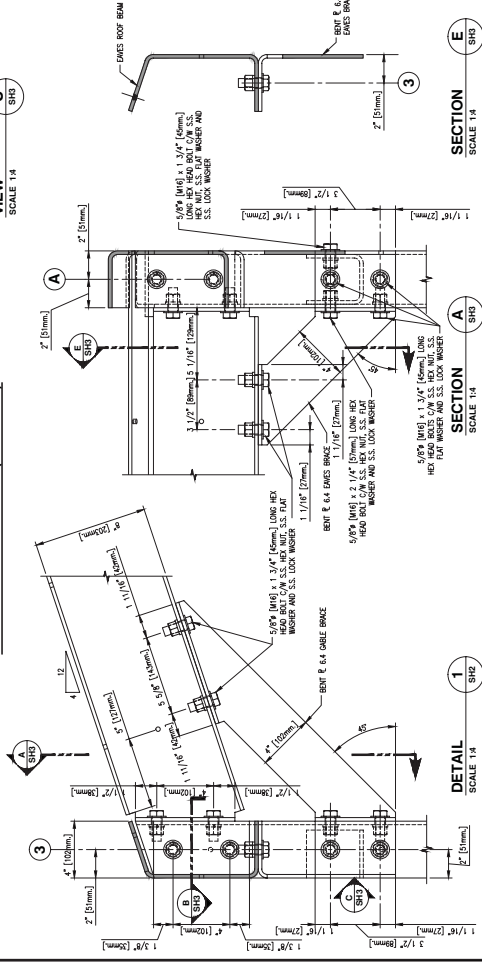
PREFABRICATED BUILDING
MODEL 12X24-S1
STRUCTURAL ALUMINUM FRAME
ROOF FRAMING PLAN, CROSS SECTION
AND ROOF FRAMING DETAILS



INTERIOR 3D VIEW AT ROOF CORNER (LOW EAVES)



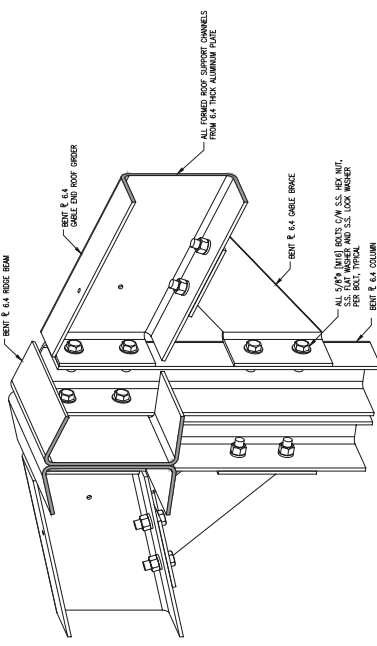
3D VIEW - BRACING CLIP (REMOVED)



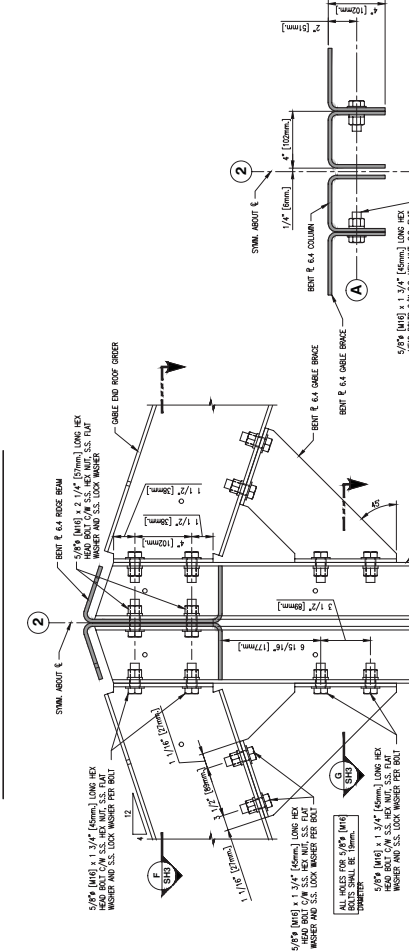
1. FOR GENERAL NOTES, LEGEND AND DRAWING INDEX REFER TO DRAWING 4-30-5-SF SH1.

FOR TENDER ONLY.
NOT FOR CONSTRUCTION.

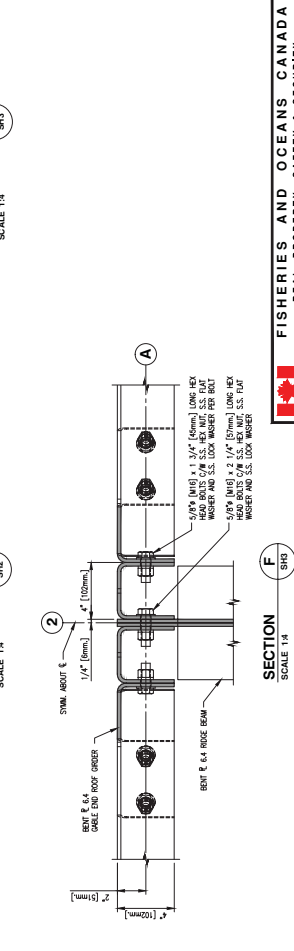
FOR COLD FORMING OF ALUMINUM PLATE AND FOR COLD FORMING OF ALUMINUM CHANNELS, REFER TO THE GENERAL NOTES AND THE CONTRACT SPECIFICATION.



INTERIOR 3D VIEW AT ROOF RIDGE GABLE END



SECTION G
SCALE 1:4



FISHERIES AND OCEANS CANADA
REAL PROPERTY, SAFETY & SECURITY

PREFABRICATED BUILDING
MODEL 12X24-S1
STRUCTURAL ALUMINUM FRAME
KNEE BRACING AND ROOF BEAM
CONNECTION DETAILS

SCALE
AS NOTED
DATE
JULY 5, 2013
DWG. NUMBER
4-30-5-SF
SHEET
8
REVISION
A

DESIGNED
M. Long
DRAWN
M. Long
CHECKED
M. Long
RECOMMENDED
M. Long
APPROVED
M. Long

NO. DATE REVISIONS

NO. DATE REVISIONS

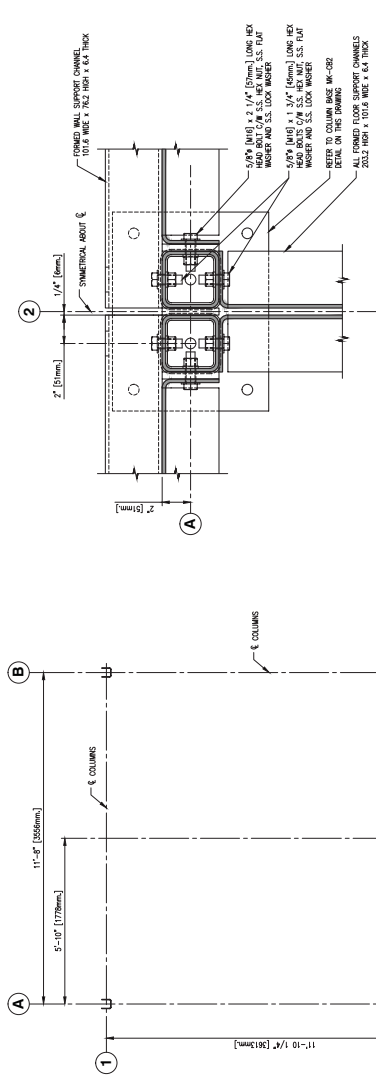
NO. DATE REVISIONS

NO. DATE REVISIONS

NO. DATE REVISIONS

NO. DATE REVISIONS

NO. DATE REVISIONS



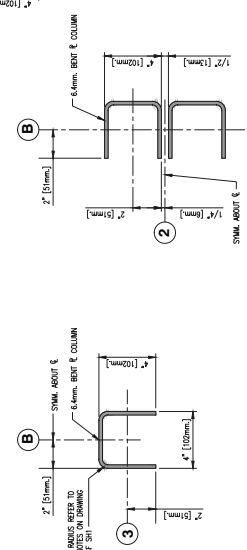
SECTION A
SCALE 1:4



DETAIL 1
SCALE 1:4



COLUMN PLAN
SCALE 1:4



DETAIL 1
SCALE 1:4

DETAIL 2
SCALE 1:4

FOR TENDER ONLY.
NOT FOR CONSTRUCTION.

1. FOR GENERAL NOTES, LEGEND AND DRAWING INDEX REFER TO DRAWING 4-30-5-SF SH.

DWG. NO.	DRAWING REFERENCES
----------	--------------------

NOTES

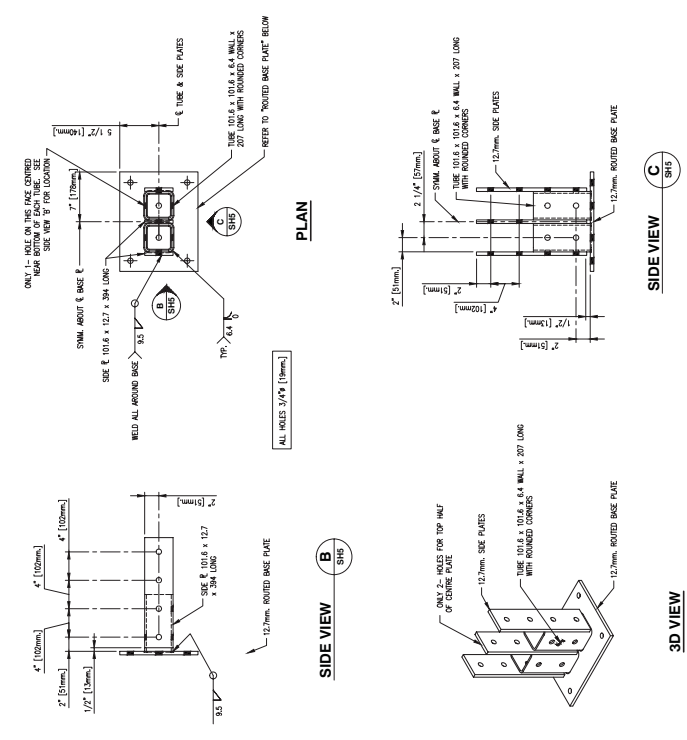
NO.	DATE	REVISIONS
-----	------	-----------

FISHERIES AND OCEANS CANADA
REAL PROPERTY, SAFETY & SECURITY

PREFABRICATED BUILDING
MODEL 12X24-S1
STRUCTURAL ALUMINUM FRAME
COLUMN PLAN AND
COLUMN BASE MK-CB2
SECTIONS AND DETAILS

SCALE
AS NOTED
DATE
JULY 5, 2013
DWG. NUMBER
4-30-5-SF
SHEET
8
REVISION
D

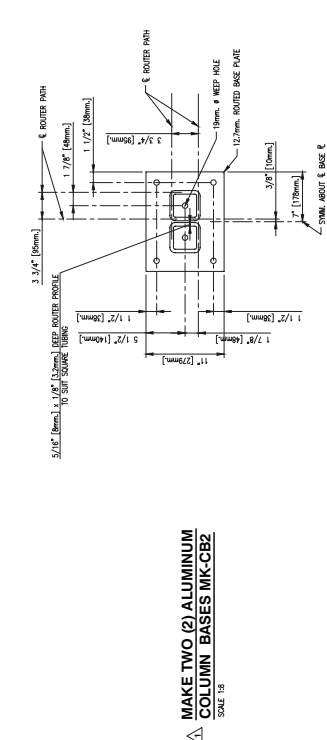
ROUTED BASE PLATE

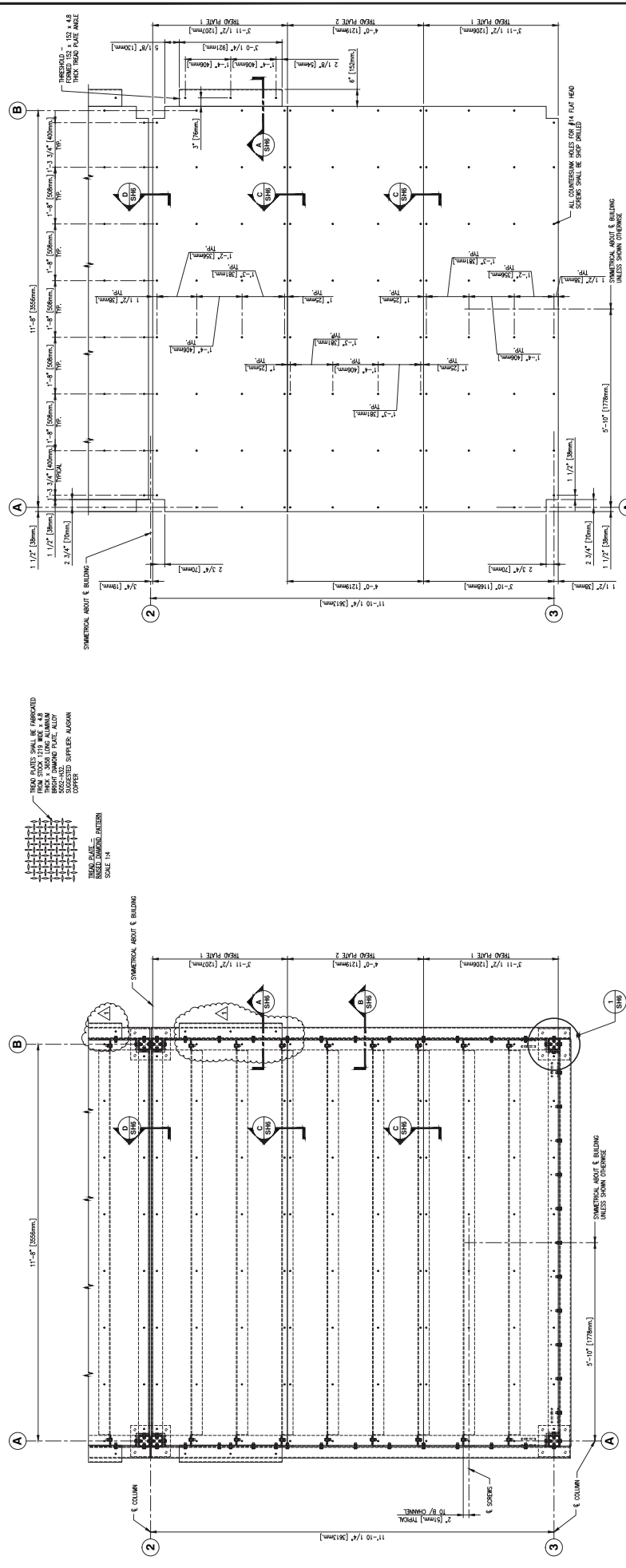


3D VIEW

SIDE VIEW

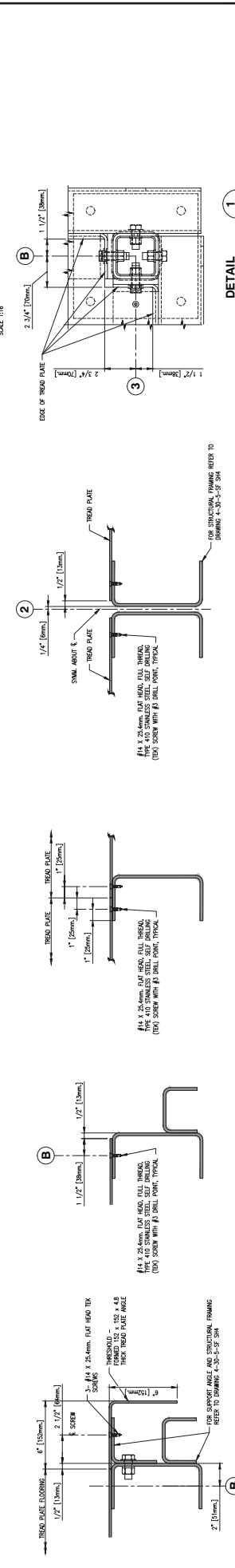
MAKE TWO (2) ALUMINUM COLUMN BASES MK-CB2
SCALE 1:8





COMBINED TREAD PLATE AND FLOOR FRAMING PLAN (NAT PLAN) SCALE 1:16

TREAD PLATE PLAN (NAT PLAN) SCALE 1:16



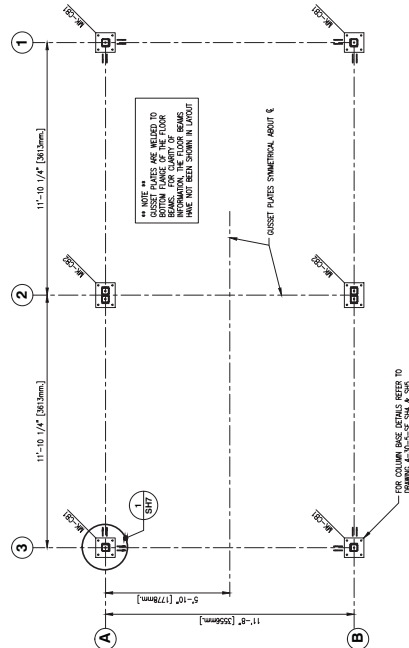
SECTION A SCALE 1:4

SECTION B SCALE 1:4

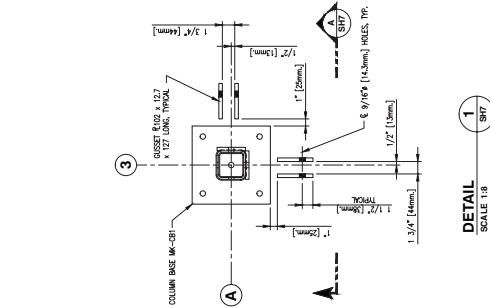
SECTION C SCALE 1:4

SECTION D SCALE 1:4

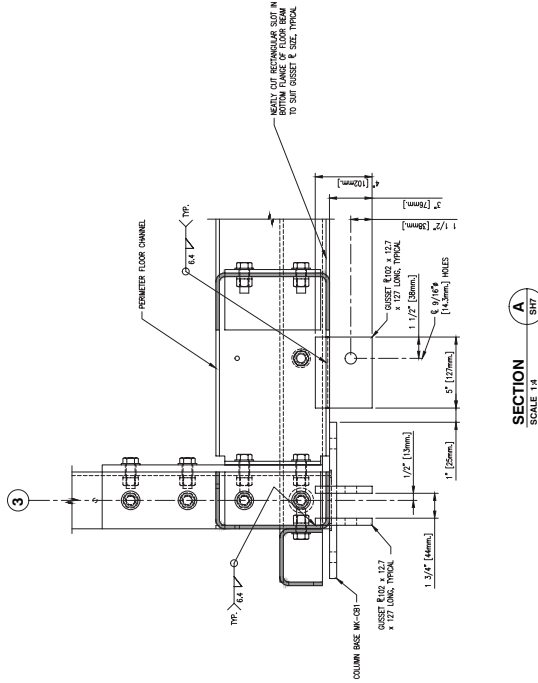
DRAWING NO.		DRAWING REFERENCES		NOTES	
1.		FOR GENERAL NOTES, LEGEND AND DRAWING INDEX REFER TO DRAWING 4-30-5-SF SH.			
FOR TENDER ONLY. NOT FOR CONSTRUCTION.					
DESIGNED BY M. Liang		CHECKED BY L. Liang		REVISIONS	
DRAWN BY L. Liang		REVISIONS		NO.	
DATE JULY 5, 2013		DATE JULY 5, 2013		DATE JULY 5, 2013	
DWG. NUMBER 4-30-5-SF		DWG. NUMBER 4-30-5-SF		DWG. NUMBER 4-30-5-SF	
SHEET 8		SHEET 8		SHEET 8	
SCALE AS NOTED		SCALE AS NOTED		SCALE AS NOTED	
PROJECT PREFABRICATED BUILDING		PROJECT PREFABRICATED BUILDING		PROJECT PREFABRICATED BUILDING	
MODEL 12X24-S1		MODEL 12X24-S1		MODEL 12X24-S1	
STRUCTURAL ALUMINUM FRAME		STRUCTURAL ALUMINUM FRAME		STRUCTURAL ALUMINUM FRAME	
TREAD PLATE FLOOR PLAN		TREAD PLATE FLOOR PLAN		TREAD PLATE FLOOR PLAN	
AND DETAILS		AND DETAILS		AND DETAILS	
FISHERIES AND OCEANS CANADA		FISHERIES AND OCEANS CANADA		FISHERIES AND OCEANS CANADA	
REAL PROPERTY, SAFETY & SECURITY		REAL PROPERTY, SAFETY & SECURITY		REAL PROPERTY, SAFETY & SECURITY	



CABLE BRACING GUSSET PLATE LAYOUT
SCALE 1/8"



DETAIL 1
SCALE 1/8"



SECTION
SCALE 1/4"

TYPICAL GUSSET PLATE CONNECTIONS TO FLOOR BEAMS

1. FOR GENERAL NOTES, LEGEND AND DRAWING INDEX REFER TO DRAWING 4-30-5-SF SH-1.

**FOR TENDER ONLY.
NOT FOR CONSTRUCTION.**

DWG. NO. DRAWING REFERENCES

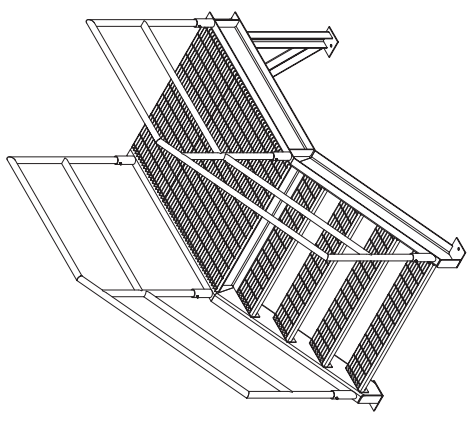
NOTES

NO.	DATE	REVISIONS
1	NOV. 18, 2013	DRAWING ADDED TO TENDER PACKAGE. ISSUED ONLY FOR TENDERING PURPOSES. NOT FOR CONSTRUCTION.

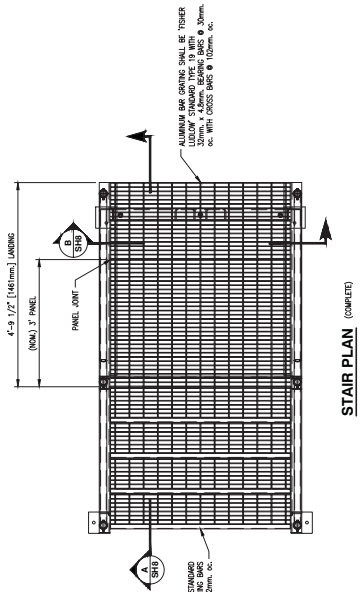
DESIGNED M. Liang	CHECKED M. Liang	APPROVED M. Liang
----------------------	---------------------	----------------------

FISHERIES AND OCEANS CANADA
REAL PROPERTY, SAFETY & SECURITY

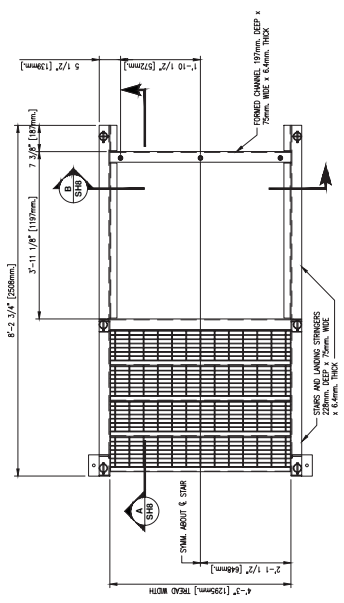
SCALE AS NOTED	DATE JULY 5, 2013	DWG. NUMBER 4-30-5-SF	SHEET 8
PROJECT MODEL 12X24-S1 STRUCTURAL ALUMINUM FRAME CABLE BRACING GUSSET PLATE LAYOUT, SECTION AND DETAILS			REVISION A



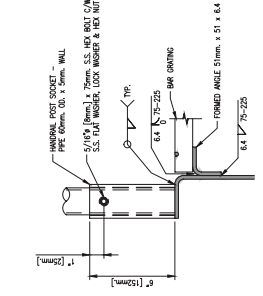
3D VIEW



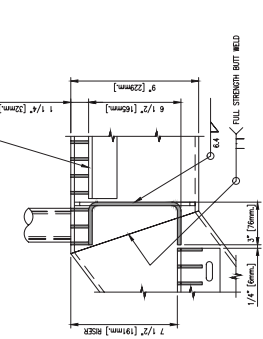
STAIR PLAN (COMPLETE)
SCALE 1:16



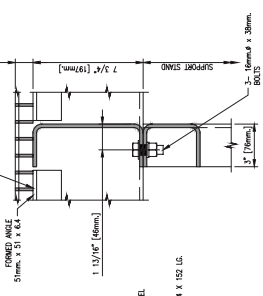
PLAN
(HANDRAILING OMITTED FOR CLARITY)
MAKE TWO (2) WELDED ALUMINUM STAIRS
SCALE 1:16



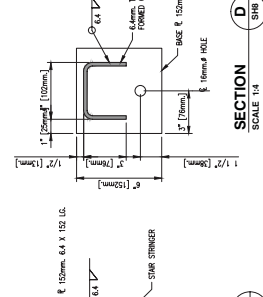
DETAIL 1:4
SCALE 1:4



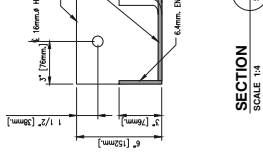
DETAIL 1:4
SCALE 1:4



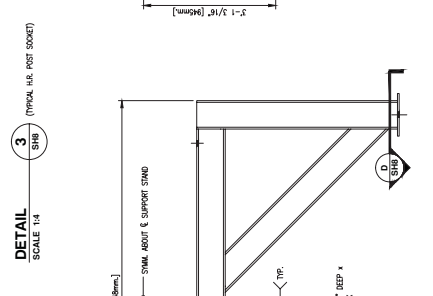
DETAIL 1:4
SCALE 1:4



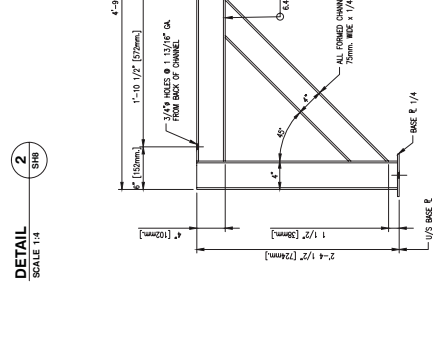
SECTION 1:4
SCALE 1:4



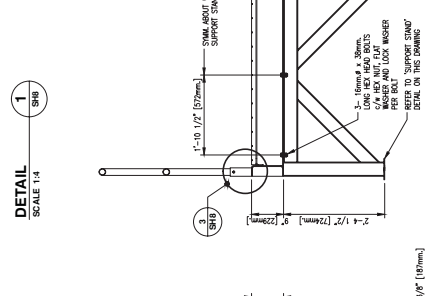
SECTION 1:4
SCALE 1:4



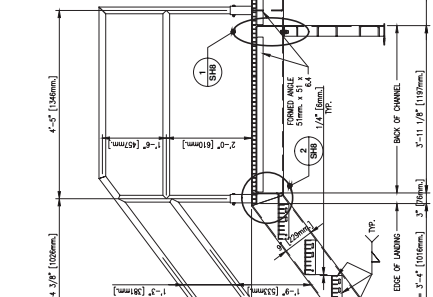
DETAIL 1:4
SCALE 1:4



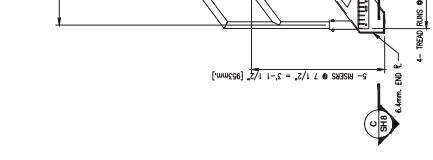
DETAIL 1:4
SCALE 1:4



DETAIL 1:4
SCALE 1:4



SECTION 1:4
SCALE 1:4



SECTION 1:4
SCALE 1:4

REMOVABLE HANDRAIL
SCALE 1:16



FISHERIES AND OCEANS CANADA
REAL PROPERTY, SAFETY & SECURITY

SCALE	AS NOTED
DATE	JULY 5, 2013
DWG. NUMBER	4-30-5-SF
SHEET	8
SIZE	D
REVISION	D

DESIGNED	M. Long
DRAWN	C. Macdonald
CHECKED	C. Macdonald
APPROVED	C. Macdonald
DATE	NOV. 18, 2013
REVISIONS	NOV. 18, 2013

NO.	DATE	REVISIONS
1	NOV. 18, 2013	ISSUED FOR CONSTRUCTION
2	NOV. 18, 2013	ISSUED FOR CONSTRUCTION

DWG. NO.	DRAWING REFERENCES
1	FOR GENERAL NOTES, LEGEND AND DRAWING INDEX REFER TO DRAWING 4-30-5-SF SH.

DWG. NO.	DRAWING REFERENCES
1	FOR GENERAL NOTES, LEGEND AND DRAWING INDEX REFER TO DRAWING 4-30-5-SF SH.