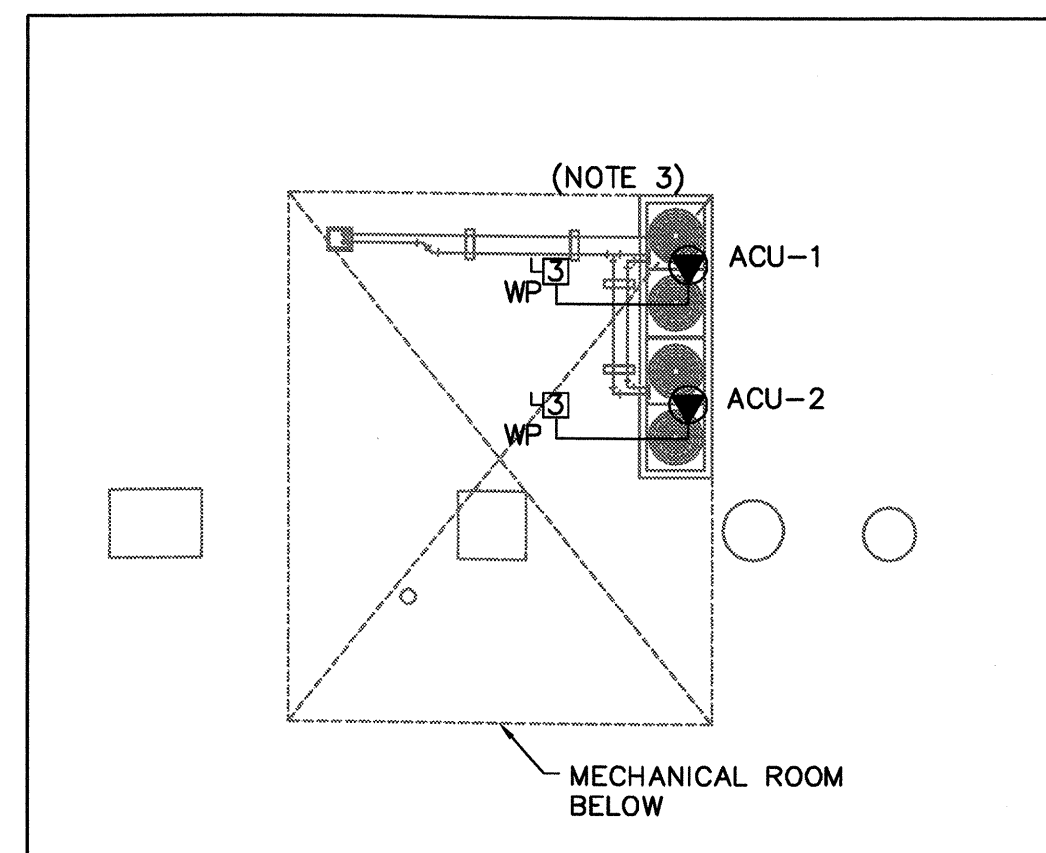


1
E-01 BUILDING 3- FIRST FLOOR POWER PLAN
1:100

ROOM INDEX

101 FOYER	109 JANITOR'S CLOSET	115 OFFICE	127 LOUNGE
102 INMATE WAITING RM	110 OFFICE	116 OFFICE	128 OFFICE
103 LAVATORY	110A ELECTRICAL CLST	117 OFFICE	129 INTERVIEW ROOM
104 LAVATORY	111 BOARDROOM	118 OFFICE	130 MECHANICAL ROOM
105 LAN ROOM	112 OFFICE	119 OFFICE	131 CORRIDOR
106 OFFICE	113 OFFICE	120 LAVATORY	132 COFFEE
107 OFFICE	114 OFFICE	121 GENERAL OFFICE	133 COFFEE
108 OFFICE		122 BOARDROOM	134 MEN'S W/R
		123 OFFICE	135 BOARDROOM
		124 FOYER	136 OFFICE
		125 OFFICE	137 OFFICE
		126 WOMEN'S W/R	138 OFFICE



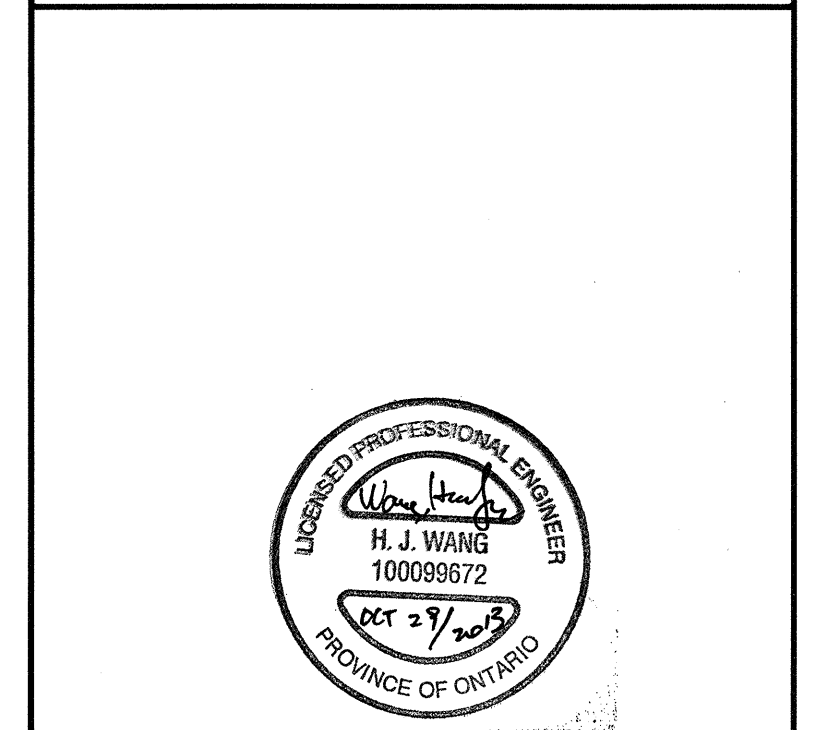
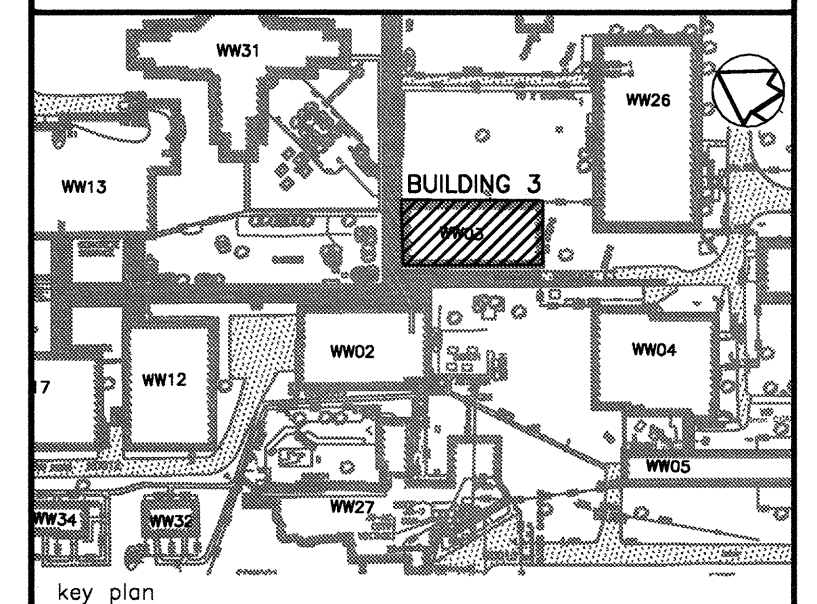
2
E-01 BUILDING 3- ROOF TOP POWER PLAN
1:100

LEGEND:

- PACKAGE EQUIPMENT TERMINATION BOX
- Ⓜ MANUAL STARTER
- Ⓢ THREE POSITION SELECTOR SWITCH
- NEW
- EXISTING
- Ⓢ 3-POLE DISCONNECT SWITCH
WP - WEATHER-PROOF

NOTES:

- REFER TO MECHANICAL DRAWINGS WDR-WW02-WW03-G-01~04 FOR MECHANICAL DEMOLITION REQUIREMENTS. CONTRACTOR TO DEMOLISH ALL FEEDER WIRING AND CONDUITS THAT ARE MADE OBSOLETE BY THE MECHANICAL EQUIPMENT REMOVAL AND LEAVE SOURCE SUPPLY BREAKERS AS SPARE UNLESS OTHERWISE INDICATED.
- REFER TO DRAWING WDR-WW03-E-03 FOR INDOOR AC UNITS AND BRANCH CONTROLLERS POWER AND CONTROL WIRING DIAGRAMS.
- PROVIDE TWO (2) 208V, 100A, 3P, NEMA 3R LOCAL DISCONNECT SWITCHES MOUNT ON THE ROOF FOR ACU-1 AND ACU-2 RESPECTIVELY.
- PROVIDE ALL WIRING IN RGS CONDUITS UNLESS OTHERWISE INDICATED.
- PROVIDE WALL AND ROOF PENETRATIONS AS REQUIRED AND RESTORE ITS ORIGINAL FIRE RATING WHERE APPLICABLE BY PROPER FIRE STOP SEALS. PROVIDE WEATHER-PROOF FLASHING FOR ALL CONDUIT ROOF PENETRATIONS.
- TRANSFORMER TO BE FLOOR MOUNTED.
- PROVIDE NEW POWER CIRCUIT FOR ALL NEW EQUIPMENT FROM ASSOCIATE POWER PANELS.



04	ISSUED FOR TENDER	2013/10/29
03	ISSUED FOR TENDER	2011/10/14
02	SUBMITTED FOR 99% DESIGN	2011/07/18
01	SUBMITTED FOR 66% DESIGN	2011/04/20
revision		date

Do not scale drawings.
Verify all dimensions and conditions on site and immediately
notify the Departmental Representative of all discrepancies.

AECOM

This drawing has been prepared for the use of AECOM's client and may not be used, reproduced or
relied upon by third parties, except as approved by AECOM and its client, as required by law or for use
by governmental reviewing agencies. AECOM accepts no responsibility, and denies any liability
whatsoever, to any party that modifies this drawing without AECOM's express written consent.
Do not scale this document. All measurements must be obtained from stated dimensions.

project title
titre du projet
WARKWORTH Ontario
MEDIUM SECURITY INSTITUTION
UNDERGROUND DUCT REPLACEMENT

drawing title
titre du dessin
BUILDING 3
FIRST FLOOR
ELECTRICAL POWER PLAN

drawn by
dessiné par
L. ZHANG

designed by
conçu par
K. LIANG

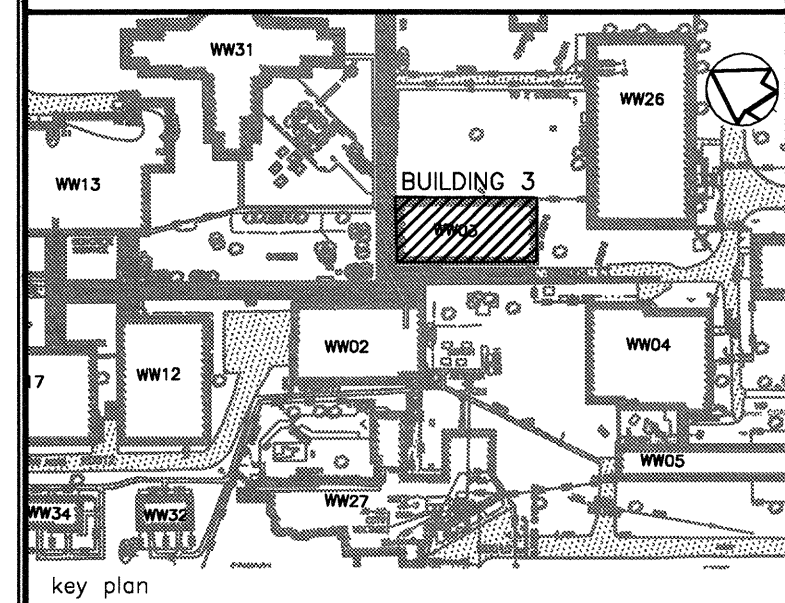
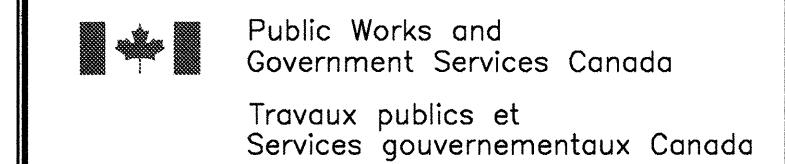
approved by
approuvé par
K. LIANG

bid
offre
S. BELL project manager
administrateur
de projets

project date
date du projet
2013-10-29

project no.
no. du projet
R.033225.001

drawing no.
dessiné no.
WDR-WW03-E-01



Do not scale drawings.
Verify all dimensions and conditions on site and immediately
notify the Departmental Representative of all discrepancies.

AECOM

This drawing has been prepared for the use of AECOM's client and may not be used, reproduced or relied upon by third parties, except as agreed by AECOM and its client, as required by law or for use by governmental reviewing agencies. AECOM accepts no responsibility, and denies any liability whatsoever, to any party that modifies this drawing without AECOM's express written consent. Do not scale this document. All measurements must be obtained from stated dimensions.

WDR-WW03-E-02

LUMINAIRE SCHEDULE

NOTES:

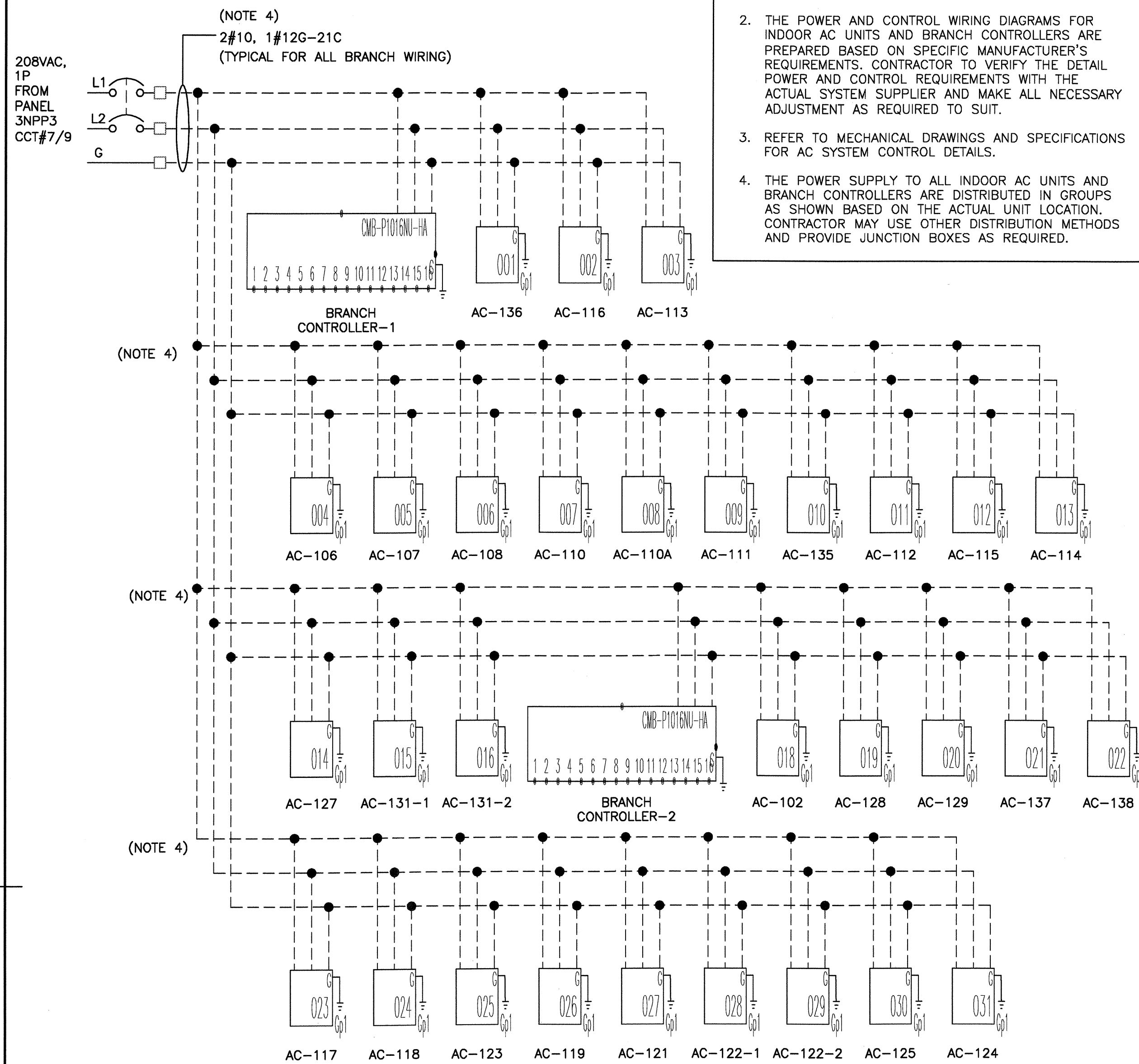
1. CONTRACTOR TO INSTALL NEW FLUORESCENT LIGHTING FIXTURES AND EXIT SIGNS AT NEW CEILING AS SHOWN.
2. ALL EXISTING LIGHTING FIXTURES ARE FED FROM EXISTING PANEL 3NPP1 LOCATED INSIDE THE MECHANICAL ROOM. REFER TO DRAWING WDR--WW03--E-01 FOR EXISTING PANEL LOCATIONS. CONTRACTOR SHALL VERIFY EXISTING LIGHTING CIRCUITING IN THE SCOPE OF WORK PRIOR TO RE-COMMISSIONING.
3. CONTRACTOR TO PROVIDE NEW WIRING AND LIGHTING CIRCUITING FROM EXISTING PANEL 3NPP1 TO ALL NEW LIGHTING FIXTURES BASED ON ZONES. FIVE (5) CIRCUITING ZONES ARE SHOWN. CONTRACTOR TO MAKE ALL NECESSARY ADJUSTMENT ON THE CIRCUITING BASED ON SITE CONDITIONS.
4. CONTRACTOR TO PROVIDE NEW OCCUPANCY SENSOR WITH MANUAL ON/OFF CONTROL WALL SWITCHES FOR EACH ROOM LIGHTING CONTROLS AS SHOWN IN LIGHTING CONTROL DETAIL DRAWING WDR--WW03--E-05.
5. CONTRACTOR TO PROVIDE NEW FOUR PRESET 2-4-8-12 HOURS TIMER SWITCHES FOR CORRIDOR LIGHTING CONTROLS AND INSTALL THE TIMER SWITCHES IN A SECURE AND CONVENIENT LOCATION AS DETERMINED ON SITE.
6. CONTRACTOR TO RE-INSTALL ALL EXISTING INSTALLATION THAT ARE AFFECTED BY THE REMOVAL OF THE CEILING UNLESS OTHERWISE INDICATED.

LAYOUT NOTES:

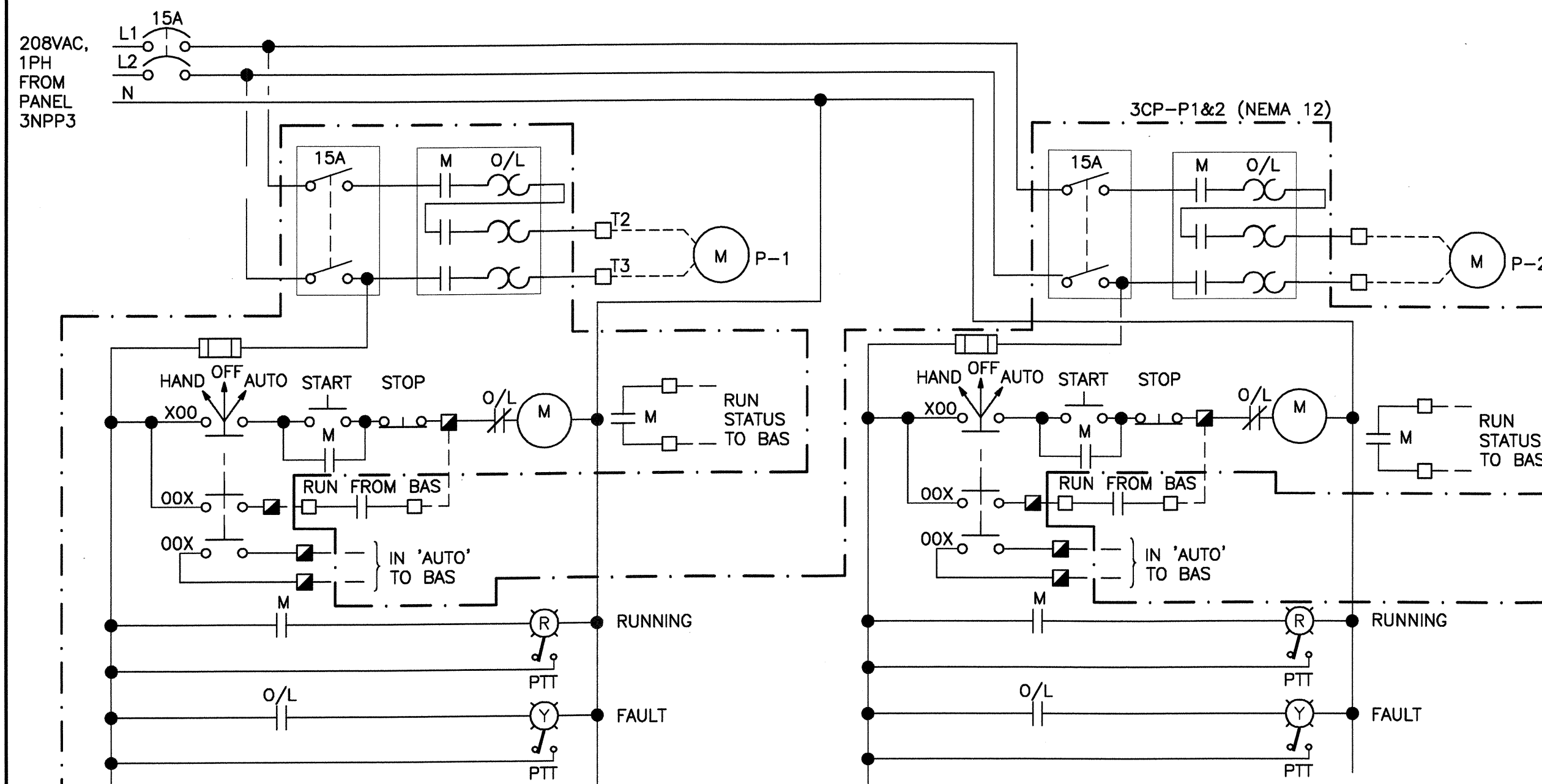
- ①. LIGHT CIRCUITING ZONE 1 (SOUTH ZONE) FED FROM ONE (1) SEPARATE 120V, 1PH, 20A CIRCUIT.
- ②. LIGHT CIRCUITING ZONE 2 (NORTHEAST ZONE) FED FROM ONE (1) SEPARATE 120V, 1PH, 20A CIRCUIT.
- ③. LIGHT CIRCUITING ZONE 3 (NORTHWEST ZONE) FED FROM ONE (1) SEPARATE 120V, 1PH, 20A CIRCUIT.
- ④. LIGHT CIRCUITING ZONE 4 (CENTER ZONE) FED FROM ONE (1) SEPARATE 120V, 1PH, 20A CIRCUIT.
- ⑤. LIGHT CIRCUITING ZONE 5 (CORRIDOR ZONE) FED FROM TWO (2) SEPARATE 120V, 1PH, 20A CIRCUITS.
- ⑥. EXISTING EMERGENCY BATTERY UNITS TO REMAIN, AND TO BE REUSED AND REINSTALLED AS NEEDED.
- ⑦. EXISTING TRACK LIGHTING TO BE REUSED AND REINSTALLED.
- ⑧. EXISTING LIGHTING TO BE REUSED AND REINSTALLED.
- ⑨. EXISTING LIGHTING TO REMAIN. RECIRCUITING AS NEEDED.
- ⑩. NON-SWITCHED LIGHTING FIXTURES TO BE PROVIDED IN CORRIDOR FOR MINIMUM SAFETY LIGHTING LEVEL.

T

 EXISTING EMERGENCY BATTERY UNIT TO REMAIN, AND TO BE REUSED AND REINSTALLED AS NEEDED.



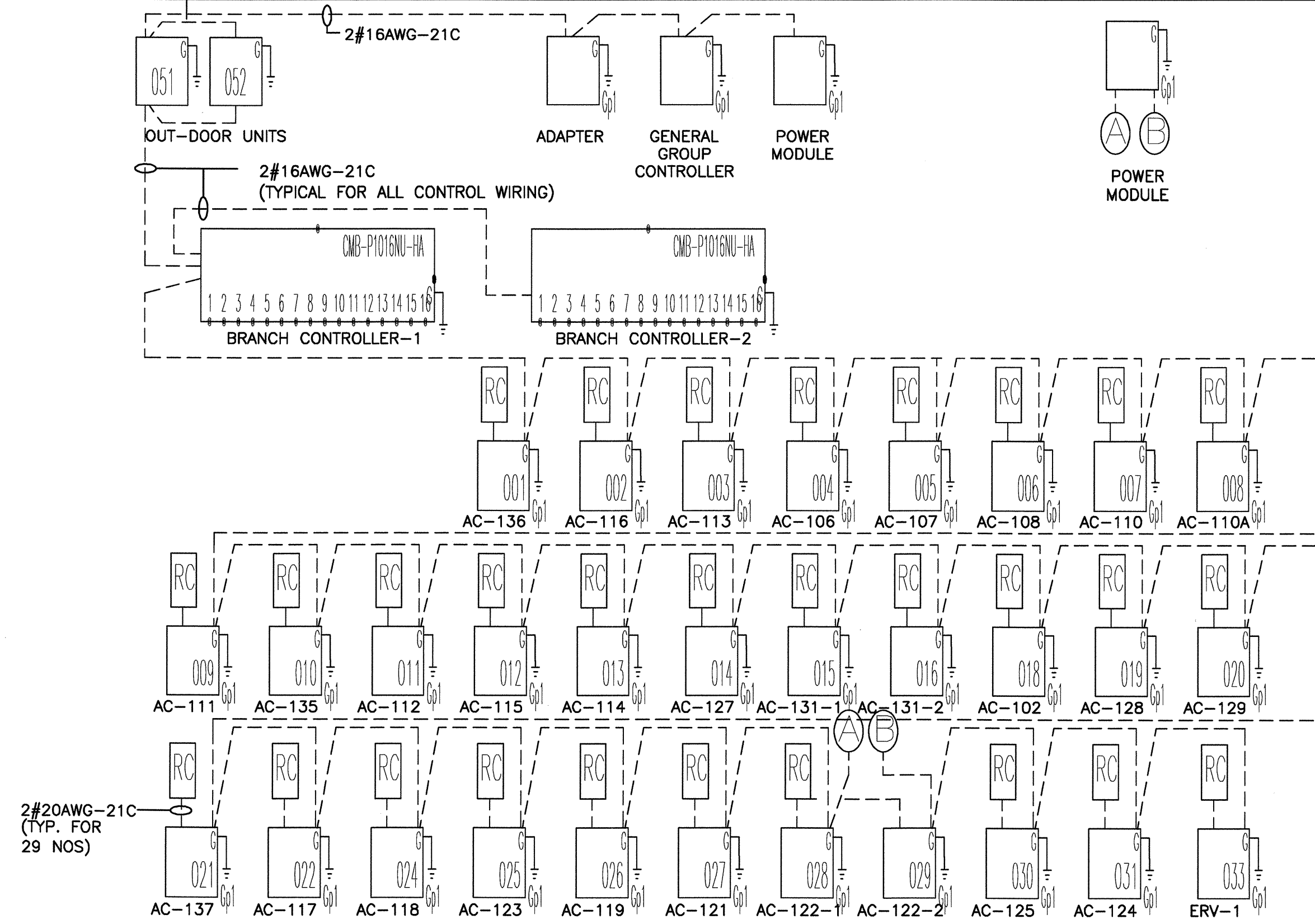
1
E-03
N.T.S.



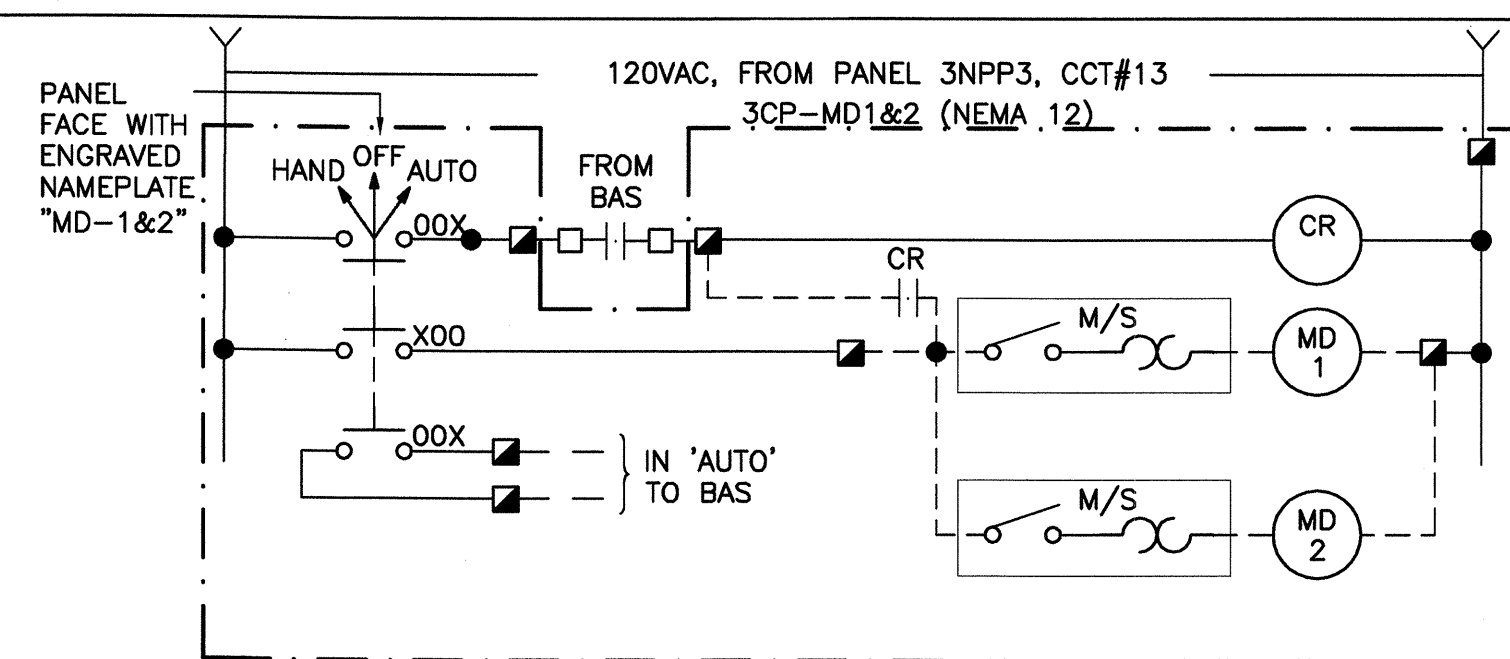
3
E-03
N.T.S.

NOTES:

1. CONTRACTOR TO PROVIDE POWER AND CONTROL WIRING IN RGS CONDUITS AS REQUIRED.
2. THE POWER AND CONTROL WIRING DIAGRAMS FOR INDOOR AC UNITS AND BRANCH CONTROLLERS ARE PREPARED BASED ON SPECIFIC MANUFACTURER'S REQUIREMENTS. CONTRACTOR TO VERIFY THE DETAIL POWER AND CONTROL REQUIREMENTS WITH THE ACTUAL SYSTEM SUPPLIER AND MAKE ALL NECESSARY ADJUSTMENT AS REQUIRED TO SUIT.
3. REFER TO MECHANICAL DRAWINGS AND SPECIFICATIONS FOR AC SYSTEM CONTROL DETAILS.
4. THE POWER SUPPLY TO ALL INDOOR AC UNITS AND BRANCH CONTROLLERS ARE DISTRIBUTED IN GROUPS AS SHOWN BASED ON THE ACTUAL UNIT LOCATION. CONTRACTOR MAY USE OTHER DISTRIBUTION METHODS AND PROVIDE JUNCTION BOXES AS REQUIRED.



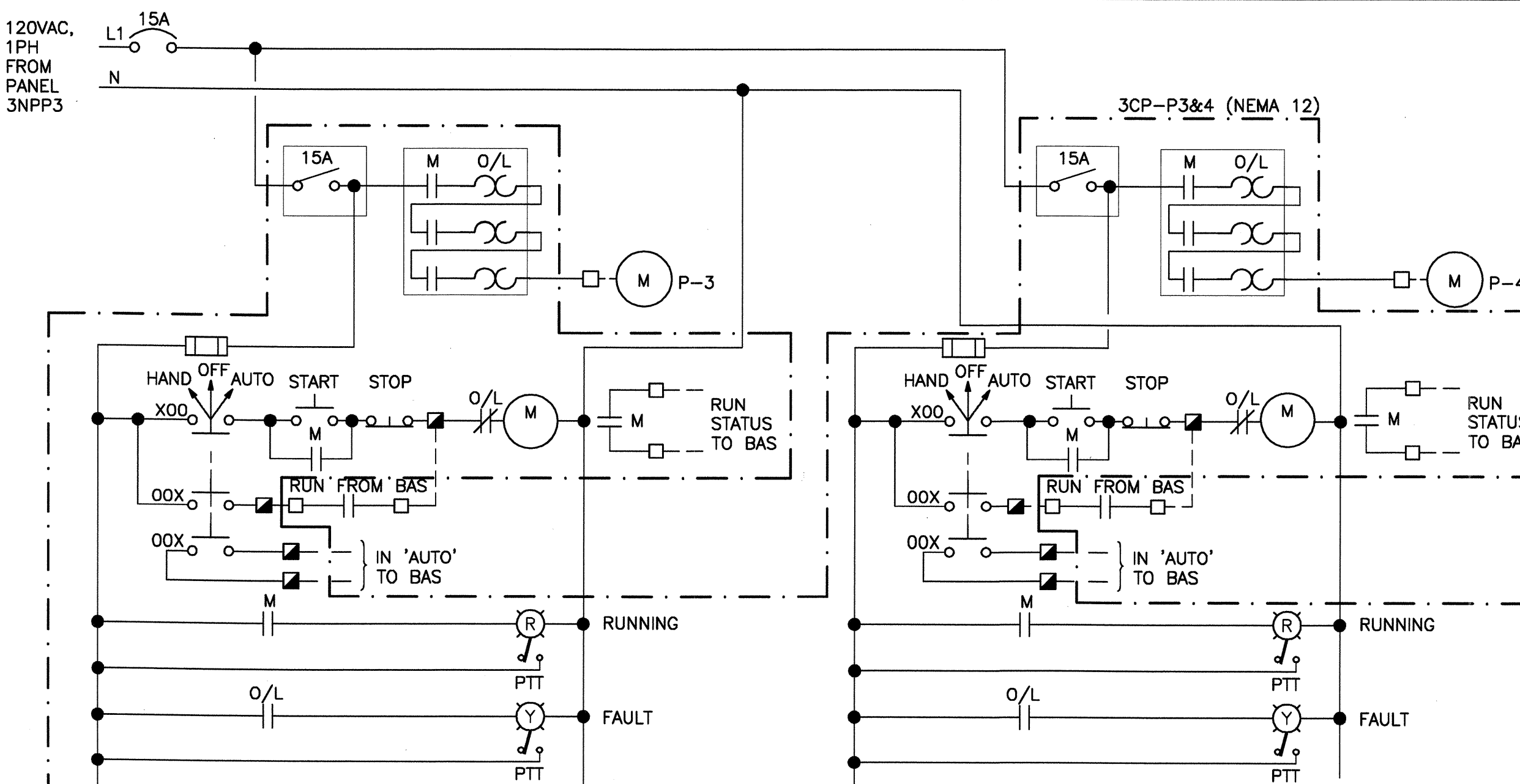
2
E-03
N.T.S.



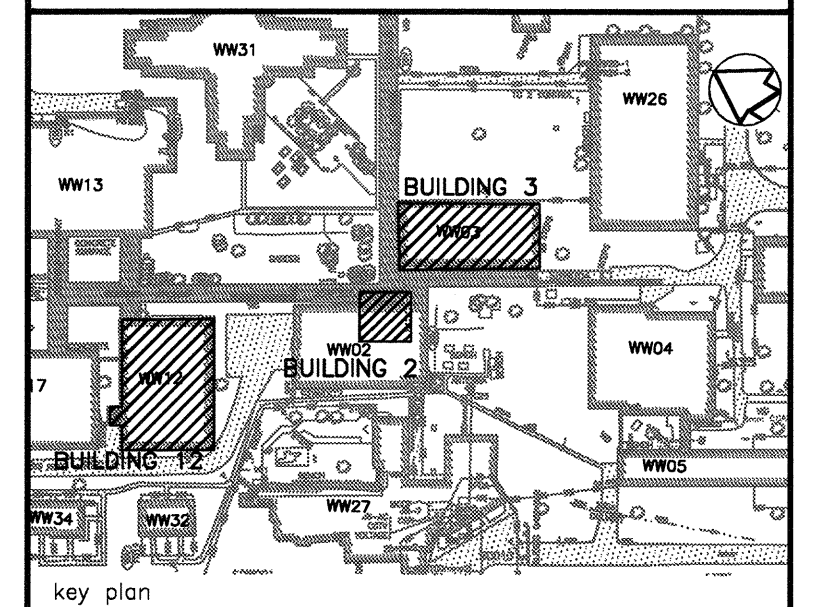
4
E-03
N.T.S.

LEGEND:

- FIELD WIRING
- WIRING INSIDE EQUIPMENT OR PANEL
- TERMINAL BLOCK IN BAS CONTROL PANEL
- TERMINAL BLOCK IN LOCAL CONTROL PANEL



3
E-03
N.T.S.



04	ISSUED FOR TENDER	2013/10/29
03	ISSUED FOR TENDER	2011/10/14
02	SUBMITTED FOR 99% DESIGN	2011/07/18
01	SUBMITTED FOR 66% DESIGN	2011/04/20
revision		date

Do not scale drawings.
Verify all dimensions and conditions on site and immediately notify the Departmental Representative of all discrepancies.

AECOM

This drawing has been prepared for the use of AECOM's client and may not be used, reproduced or relied upon by third parties, except as agreed by AECOM and its client, as required by law or for use by governmental reviewing agencies. AECOM accepts no responsibility, and denies any liability whatsoever, to any party that modifies this drawing without AECOM's express written consent.
Do not scale this document. All measurements must be obtained from stated dimensions.

project title
titre du projet
WARKWORTH Ontario
MEDIUM SECURITY INSTITUTION
UNDERGROUND DUCT REPLACEMENT

drawing title
titre du dessin
BUILDING 3
ELECTRICAL WIRING DIAGRAMS

drawn by
dessiné par
L. ZHANG

designed by
conçu par
K. LIANG

approved by
approuvé par
K. LIANG

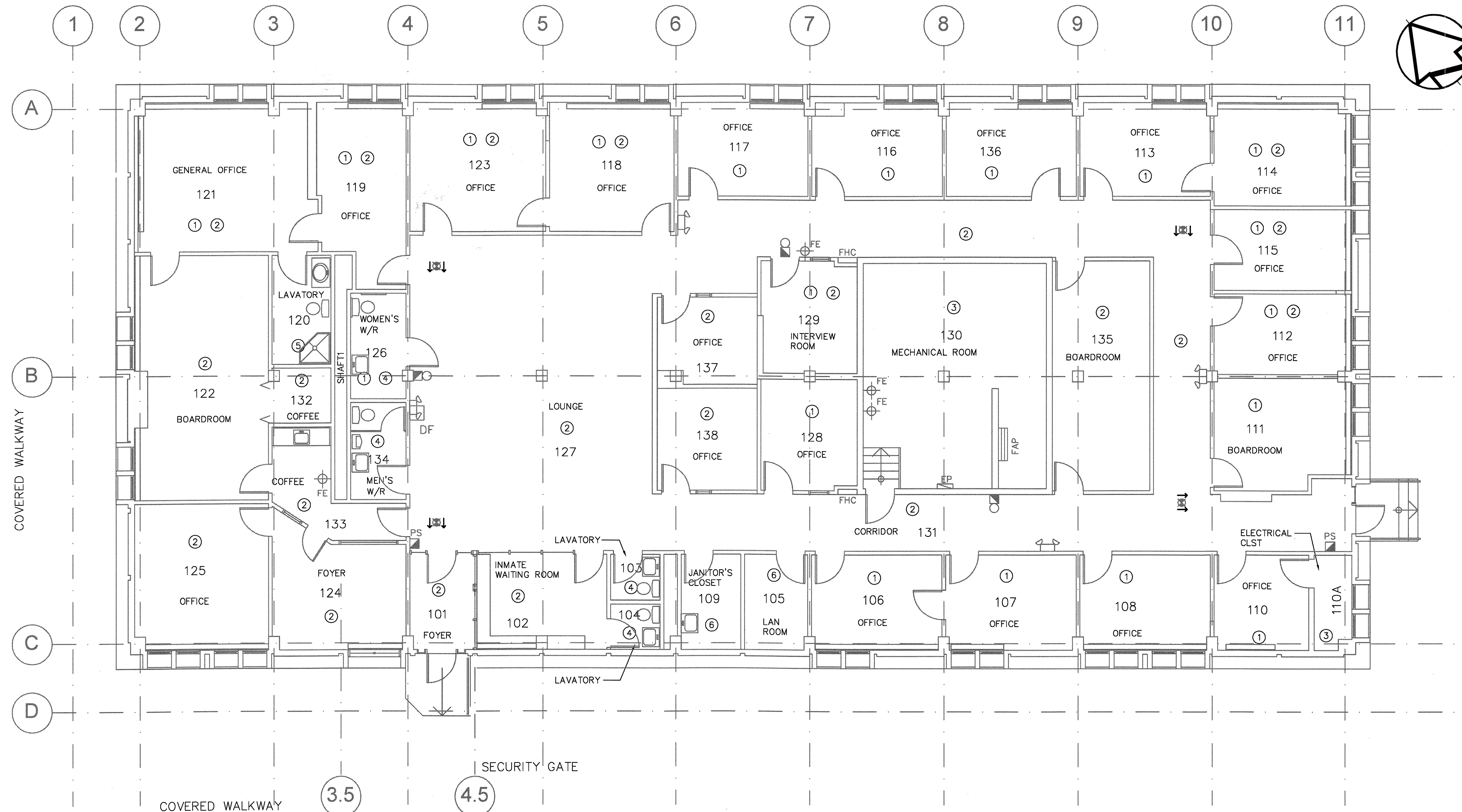
bid offre
S. BELL
project manager
administrateur de projets

project date
date du projet
2013-10-29

project no.
no. du projet
R.033225.001

drawing no.
dessiné no.
WDR-WW03-E-03

AECOM PROJECT No.: 60163528



1
E-04
1:75
BUILDING 3 – FIRST FLOOR DEMOLITION PLAN

LEGEND

	PULL STATION
	FIRE EXTINGUISHER
	FIRE HOSE CABINET
	ELECTRICAL PANEL
	FIRE ALARM PANEL
	EMERGENCY LIGHTING UNIT WITH BATTERY & 2 HEADS
	FIRE ALARM

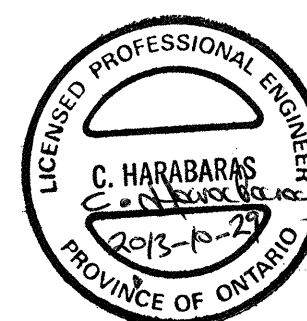
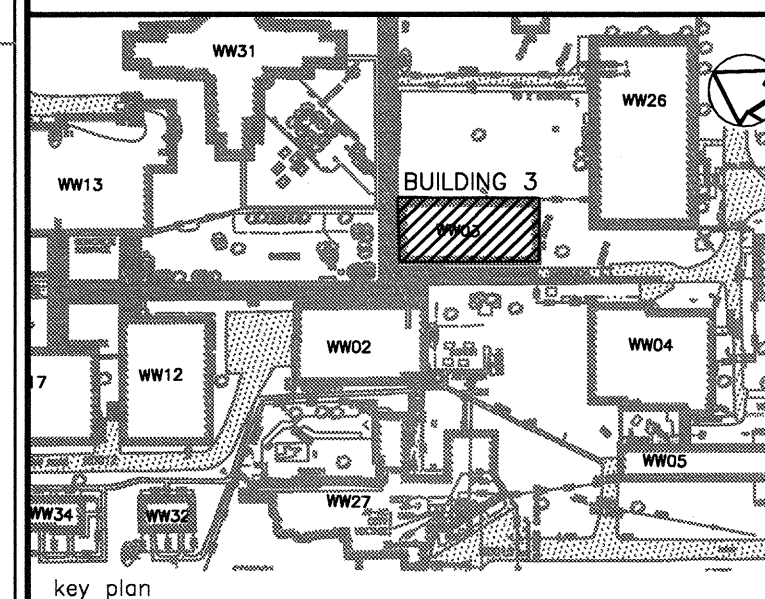
— NEW
— EXISTING

LAYOUT NOTES:

- ALL EXISTING ELECTRICAL INSTALLATION INCLUDING BUT NOT LIMITED TO LIGHTING FIXTURES, CONDUITS, AND WIRING AT THE ASBESTOS CEILING AT U/S OF STRUCTURE TO BE REMOVED.
- ALL EXISTING ELECTRICAL INSTALLATION INCLUDING BUT NOT LIMITED TO LIGHTING AND WIRING AT NON-ASBESTOS SUSPENDED CEILING TO BE REMOVED.
- ALL EXISTING ELECTRICAL INSTALLATION AT EXPOSED STRUCTURE CEILING TO REMAIN.
- ALL EXISTING ELECTRICAL INSTALLATION INCLUDING BUT NOT LIMITED TO LIGHTING FIXTURES AND WIRING AT DRYWALL CEILING TO BE REMOVED.
- ALL EXISTING ELECTRICAL INSTALLATION INCLUDING BUT NOT LIMITED TO LIGHTING FIXTURES AND WIRING AT WOOD CEILING TO BE REMOVED.
- ALL EXISTING ELECTRICAL INSTALLATION INCLUDING BUT NOT LIMITED TO LIGHTING FIXTURES, CONDUITS, AND WIRING AT THE ASBESTOS CEILING AT U/S OF STRUCTURE TO BE REMOVED AND RE-INSTALLED.

GENERAL NOTES:

- CONTRACTOR TO REMOVE THE EXISTING CEILING MOUNT LIGHTING FIXTURES, EXIT SIGNS, ALL OTHER ELECTRICAL DEVICES, AND ASSOCIATED WIRING AS AFFECTED BY THE REMOVAL OF EXISTING CEILING.
- REFER TO ARCHITECTURAL AND MECHANICAL DEMOLITION PLAN FOR THE DETAILS OF REMOVAL THAT MAY AFFECT ELECTRICAL DEMOLITION WORK.
- CONTRACTOR SHALL VERIFY ALL EXISTING INSTALLATION INCLUDING WIRING AND CIRCUITING PRIOR TO RE-COMMISSIONING AND ENSURE ALL EXISTING INSTALLATION AFFECTED TO BE IN WORKING CONDITION AFTER COMMISSIONING.
- CONTRACTOR TO RE-COMMISSION THE EXISTING FIRE ALARM SYSTEM THAT ARE AFFECTED BY THE REMOVAL OF THE CEILING. REFER TO SPECIFICATION FOR DETAIL REQUIREMENTS.
- CONTRACTOR TO RE-INSTALL ALL EXISTING LIGHTING FIXTURES, ELECTRICAL DEVICES AND ASSOCIATED WIRING THAT ARE AFFECTED BY THE REMOVAL OF THE CEILING UNLESS OTHERWISE INDICATED.



04	ISSUED FOR TENDER	2013/10/29
03	ISSUED FOR 100% OWNER REVIEW	2013/07/25
02	ASBESTOS ABATEMENT-ISSUED FOR 99% DESIGN	2013/03/28
01	ASBESTOS ABATEMENT-ISSUED FOR 66% DESIGN	2013/03/15
revision		date

Do not scale drawings.
Verify all dimensions and conditions on site and immediately
notify the Departmental Representative of all discrepancies.

AECOM

This drawing has been prepared for the use of AECOM's client and may not be used, reproduced or
relied upon by third parties, except as agreed by AECOM and its client, as required by law or for use
by governmental reviewing agencies. AECOM accepts no responsibility, and denies any liability
whenever, in any party that modifies this drawing without AECOM's express written consent.
Do not scale this document. All measurements must be obtained from stated dimensions.

project title
titre du projet
WARKWORTH Ontario
MEDIUM SECURITY INSTITUTION
UNDERGROUND DUCT REPLACEMENT

drawing title
titre du dessin
BUILDING 3
FIRST FLOOR
ELECTRICAL DEMOLITION PLAN

drawn by
dessiné par L. ZHANG

designed by
conçue par K. LIANG

approved by
approuvée par K. LIANG

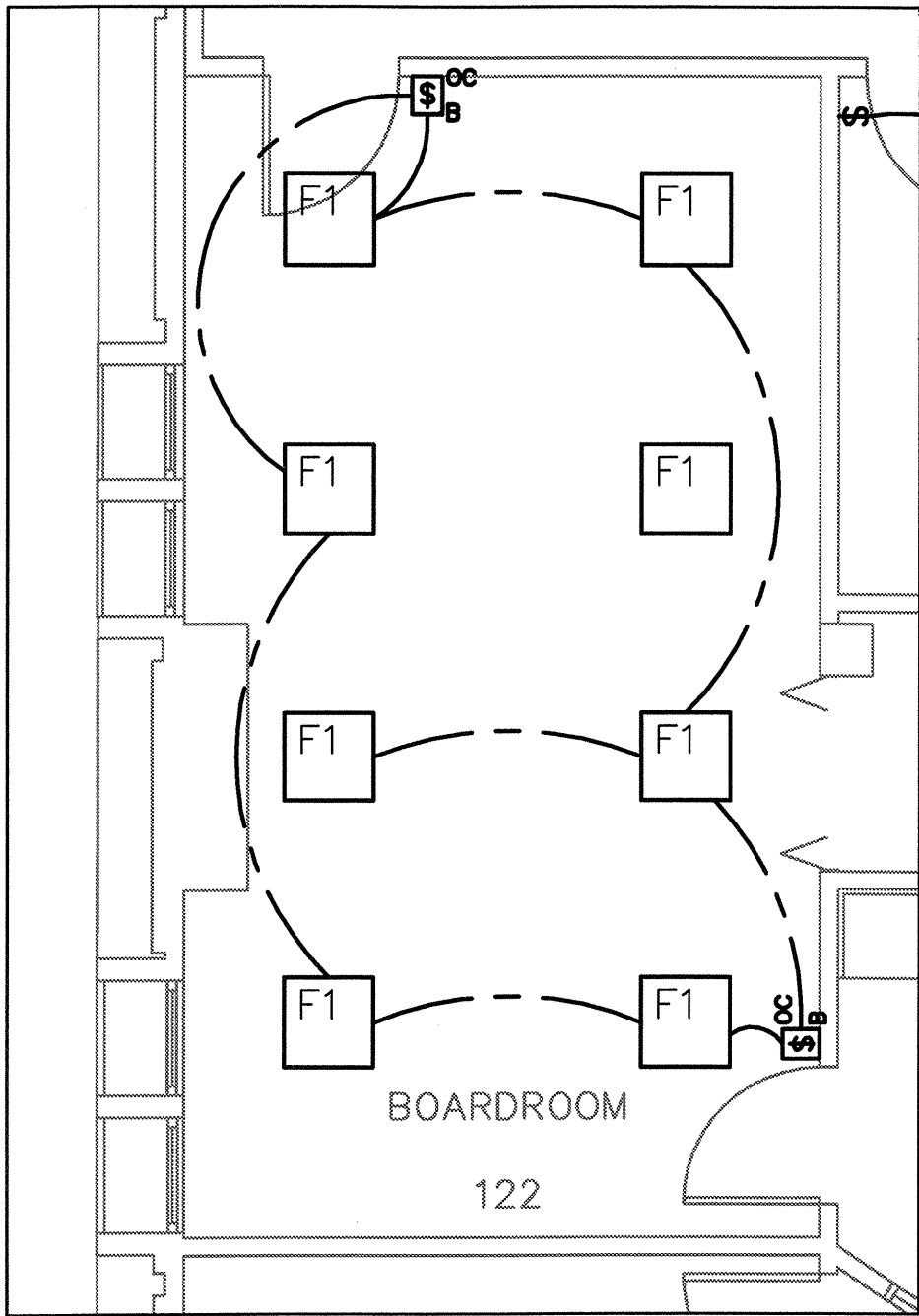
bid
offre S. BELL project manager
administrateur
de projets

project date
date du projet 2013-10-29

project no.
no. du projet R.033225.001

drawing no.
dessiné no. WDR-WW03-E-04

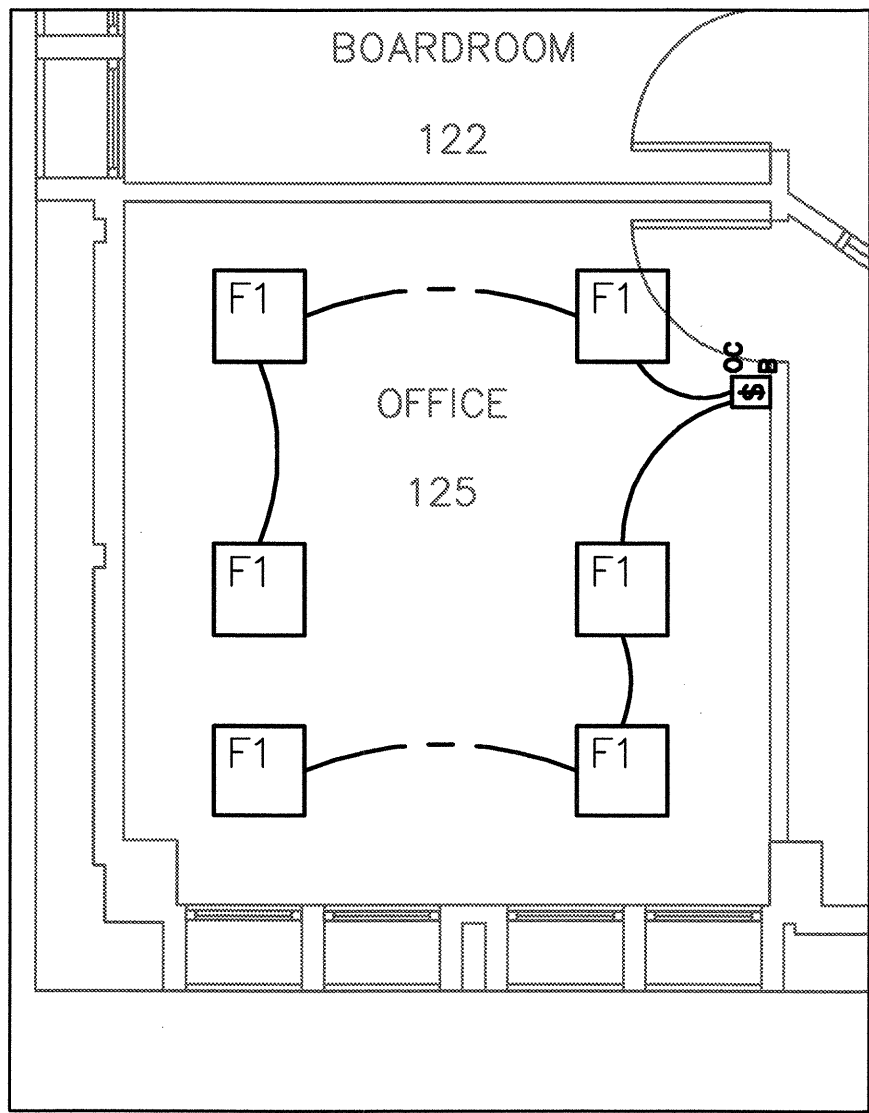
AECOM PROJECT No.: 60163528



1 TYPICAL
E-05 1:50

NOTES:

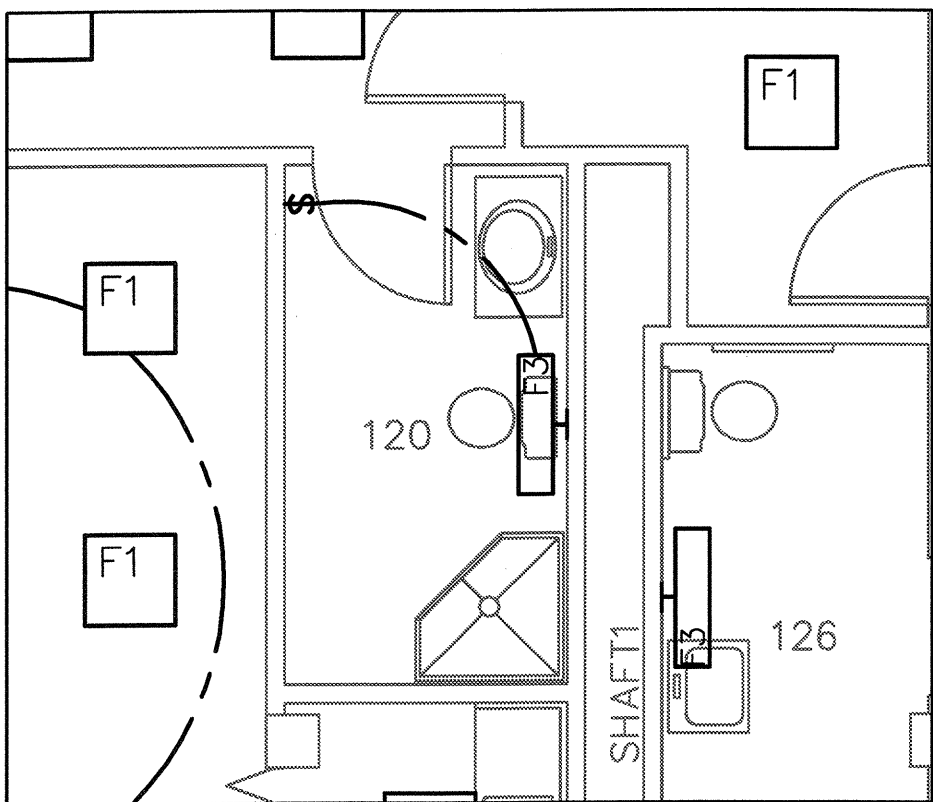
1. PROVIDE DUAL RELAY WALL SWITCH OCCUPANCY SENSOR FOR BI-LEVEL SWITCHING.
2. WIRE WALL SWITCH OCCUPANCY SENSOR IN TWO-LOCATION CONTROL (3-WAY CONTROL).
3. TYPICAL LIGHTING CONTROL FOR ROOM 121, 122 AND 135.



2 TYPICAL
E-05 1:50

NOTES:

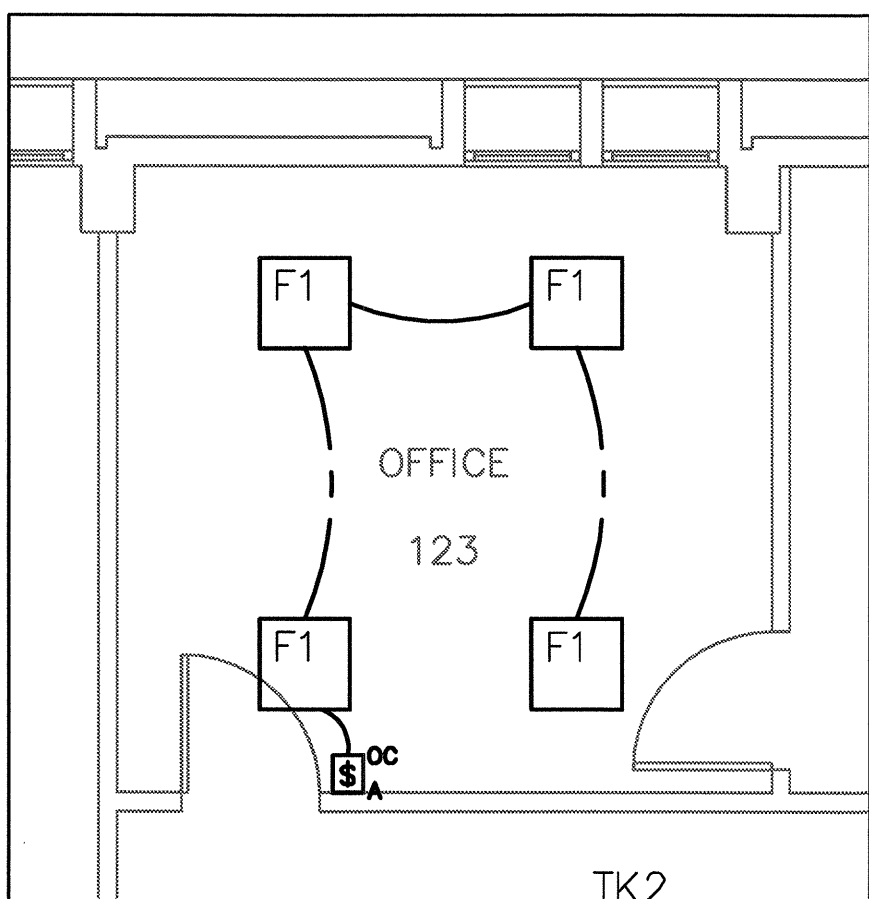
1. PROVIDE DUAL RELAY WALL SWITCH OCCUPANCY SENSOR FOR BI-LEVEL SWITCHING.
2. TYPICAL LIGHTING CONTROL FOR ROOM 125.



3 TYPICAL
E-05 1:50

NOTES:

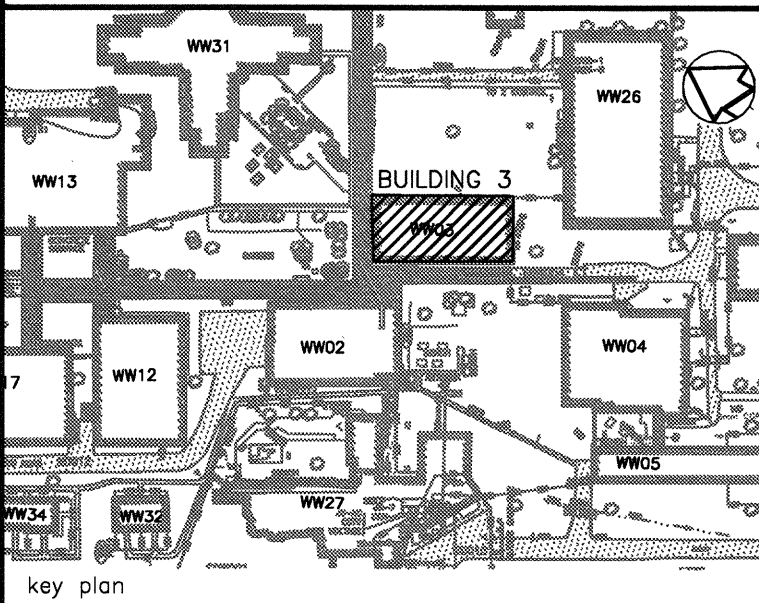
1. PROVIDE WALL SWITCH FOR SINGLE-LEVEL SWITCHING.
2. TYPICAL LIGHTING CONTROL FOR ROOM 103, 104, 105, 109, 110A, 120, 126, 132, 133, AND 134.



4 TYPICAL
E-05 1:50

NOTES:

1. PROVIDE WALL SWITCH OCCUPANCY SENSOR FOR SINGLE-LEVEL SWITCHING.
2. TYPICAL LIGHTING CONTROL FOR ROOM 102, 106, 107, 108, 110, 111, 112, 113, 114, 115, 116, 117, 118, 119, 124, 128, 129, 136, 137 AND 138.



04	ISSUED FOR TENDER	2013/10/29
03	ISSUED FOR 100% OWNER REVIEW	2013/07/25
02	ASBESTOS ABATEMENT-ISSUED FOR 99% DESIGN	2013/03/28
01	ASBESTOS ABATEMENT-ISSUED FOR 66% DESIGN	2013/03/15
revision		date

Do not scale drawings.
Verify all dimensions and conditions on site and immediately
notify the Departmental Representative of all discrepancies.

AECOM

This drawing has been prepared for the use of AECOM's client and may not be used, reproduced or
relied upon by third parties, except as agreed by AECOM and its client, as required by law or for use
by governmental reviewing agencies. AECOM accepts no responsibility, and denies any liability
whatsoever, to any party that modifies this drawing without AECOM's express written consent.
Do not scale this document. All measurements must be obtained from stated dimensions.

project title
titre du projet
WARKWORTH Ontario
MEDIUM SECURITY INSTITUTION
UNDERGROUND DUCT REPLACEMENT

drawing title
titre du dessin
BUILDING 3
FIRST FLOOR
ELECTRICAL LIGHTING DETAILS

drawn by dessiné par	L. ZHANG
designed by conçu par	K. LIANG
approved by approuvé par	K. LIANG
bid offre	S. BELL

project manager
administrateur
de projets

project date
date du projet
2013-10-29

project no.
no. du projet
R.033225.001

drawing no.
dessiné no.
WDR-WW03-E-05