

04	ISSUED FOR TENDER	2013/10/29
03	ISSUED FOR 100% OWNER REVIEW	2013/07/25
02	SUBMITTED FOR 99% DESIGN	2011/07/18
01	ISSUED FOR REVIEW	2011/02/15
revision		date

Do not scale drawings.
Verify all dimensions and conditions on site and immediately
notify the Departmental Representative of all discrepancies.

AECOM

This drawing has been prepared for the use of AECOM's client and may not be used, reproduced or
relied upon by third parties, except as agreed by AECOM and its client, as required by law or for use
by governmental reviewing agencies. AECOM accepts no responsibility, and denies any liability
whatsoever, to any party that modifies this drawing without AECOM's express written consent.
Do not scale this document. All measurements must be obtained from stated dimensions.

project title
titre du projet
WARKWORTH Ontario
MEDIUM SECURITY INSTITUTION
UNDERGROUND DUCT REPLACEMENT

drawing title
titre du dessin
BLDG. WW03
1ST FLOOR PLAN
PLUMBING & DRAINAGE
PIPING SYSTEMS

drawn by
dessiné par
L. TAURO

designed by
conçu par
A. KABBANI

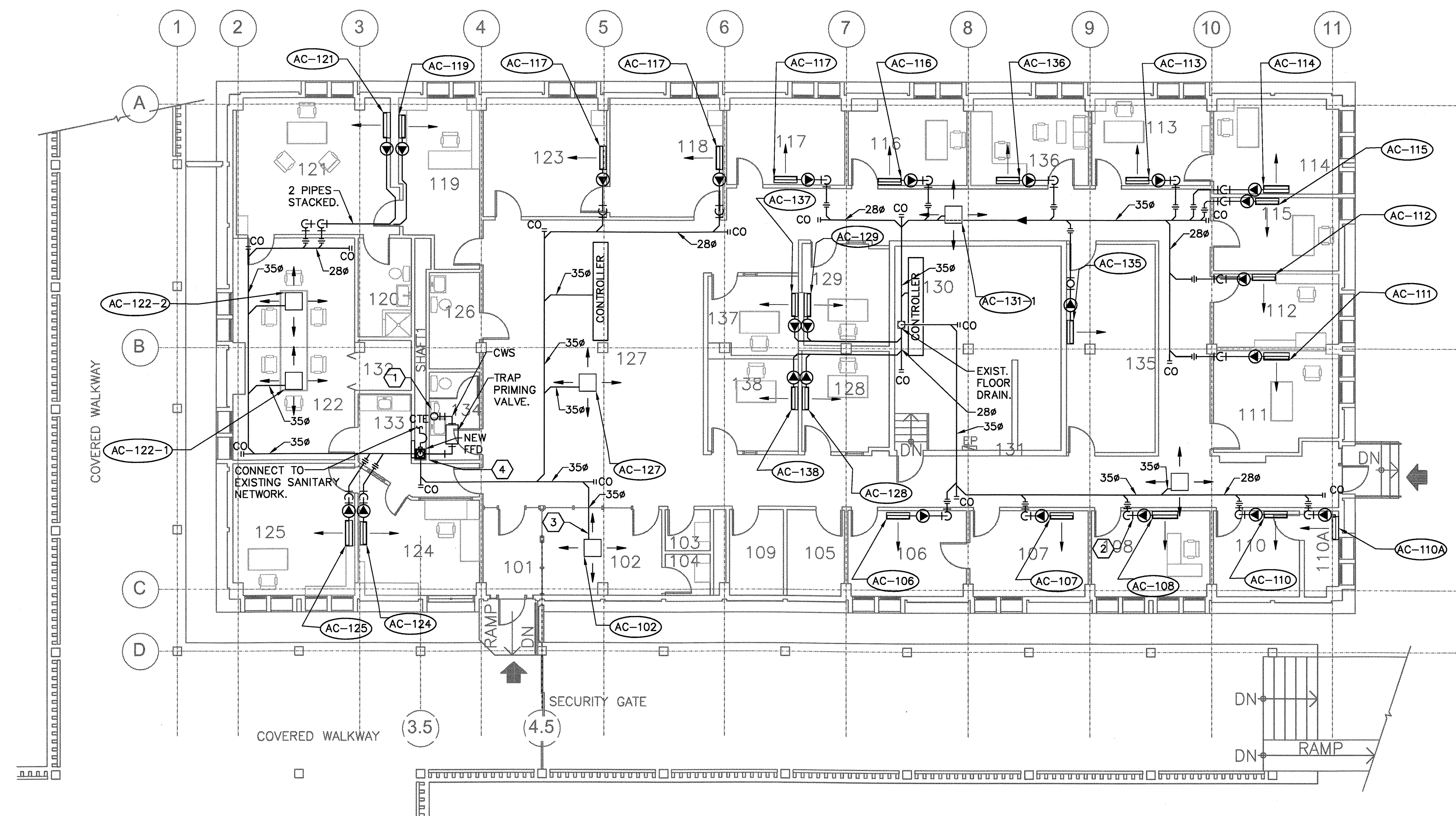
approved by
approuvé par
D. DOVAS

bid
offre
O. TABAREZ project manager
administrateur
de projets

project date
date du projet
2013-10-29

project no.
no. du projet
R.033225.001

drawing no.
dessiné no.
WDR-WW03-D-01



ROOM INDEX			
101	FOYER	109	JANITOR'S CLOSET
102	INMATE WAITING RM	110	OFFICE
103	LAVATORY	110A	ELECTRICAL CLOSET
104	LAVATORY	111	BOARDROOM
105	LAN ROOM	112	OFFICE
106	OFFICE	113	OFFICE
107	OFFICE	114	OFFICE
108	OFFICE		
		115	OFFICE
		116	OFFICE
		117	OFFICE
		118	OFFICE
		119	OFFICE
		120	LAVATORY
		121	GENERAL OFFICE
		122	BOARDROOM
		123	OFFICE
		124	FOYER
		125	OFFICE
		126	WOMEN'S W/R
		127	LOUNGE
		128	OFFICE
		129	INTERVIEW ROOM
		130	MECHANICAL ROOM
		131	CORRIDOR
		132	COFFEE
		133	COFFEE
		134	MEN'S W/R
		135	BOARDROOM
		136	OFFICE
		137	OFFICE
		138	OFFICE

- GENERAL NOTES:**
- ALL PIPE SIZES INDICATED ARE O.D. PIPE SIZING IS BASED ON MANUFACTURER RECOMMENDATIONS SPECIFIC TO TYPE OF SPLIT SYSTEM & EQUIPMENT SELECTED.
 - CONTRACTOR TO PROVIDE MANUFACTURER APPROVED SHOP DRAWINGS OF PIPE SIZES BASED ON ACTUAL LAYOUT

- DRAWING NOTES:**
- CONNECT TO EXISTING DCW PIPING OF LAVATORY.
 - REFER TO DETAILS 12, 13 & 14 ON DRAWINGS WDR-G-06 AND WDR-G-07 RESPECTIVELY FOR CONDENSATE DRAIN AND REFRIGERANT PIPING DETAILS OF WALL MOUNTED UNITS.
 - REFER TO DRAWING WDR-G-06, DETAIL 8 FOR DETAIL OF CONDENSATE DRAIN FOR CEILING CASSETTES.
 - PROVIDE FUNNEL FLOOR DRAIN, C/W TRAP AND CONNECT TO EXISTING SANITARY NETWORK.
 - PROVIDE PERMANENT ACCESS DOOR. COORDINATE LOCATION AND DETAILS WITH EXISTING SERVICES AND ARCHITECTURAL DETAILS TO ENSURE PROPER ACCESS TO FLOOR DRAIN.