

**RETURN BIDS TO:**  
**RETOURNER LES SOUMISSIONS À:**  
Bid Receiving Public Works and Government  
Services Canada/Réception des soumissions Travaux  
publics et Services gouvernementaux Canada  
800 Burrard Street, 2nd floor  
800,rue Burrard, 2e étage  
Vancouver  
British Columbia  
V6Z 0B9  
Bid Fax: (604) 775-9381

**SOLICITATION AMENDMENT**  
**MODIFICATION DE L'INVITATION**

The referenced document is hereby revised; unless otherwise  
indicated, all other terms and conditions of the Solicitation  
remain the same.

Ce document est par la présente révisé; sauf indication contraire,  
les modalités de l'invitation demeurent les mêmes.

**Comments - Commentaires**

**Vendor/Firm Name and Address**  
**Raison sociale et adresse du**  
**fournisseur/de l'entrepreneur**

**Issuing Office - Bureau de distribution**  
Public Works and Government Services Canada -  
Pacific Region  
800 Burrard Street, 12th floor  
800, rue Burrard, 12e étage  
Vancouver  
British C  
V6Z 0B9

<b>Title - Sujet</b> Concrete Fiberglass Rearing Ponds	
<b>Solicitation No. - N° de l'invitation</b> F1700-130411/A	<b>Amendment No. - N° modif.</b> 001
<b>Client Reference No. - N° de référence du client</b>	<b>Date</b> 2013-12-04
<b>GETS Reference No. - N° de référence de SEAG</b> PW-\$PWY-005-7139	
<b>File No. - N° de dossier</b> PWY-3-36199 (005)	<b>CCC No./N° CCC - FMS No./N° VME</b>
<b>Solicitation Closes - L'invitation prend fin</b> <b>at - à 02:00 PM</b> <b>on - le 2013-12-17</b>	<b>Time Zone</b> Fuseau horaire Pacific Standard Time PST
<b>F.O.B. - F.A.B.</b> <b>Plant-Usine:</b> <input type="checkbox"/> <b>Destination:</b> <input checked="" type="checkbox"/> <b>Other-Autre:</b> <input type="checkbox"/>	
<b>Address Enquiries to: - Adresser toutes questions à:</b> Pillay, Sal (PWY)	<b>Buyer Id - Id de l'acheteur</b> pwy005
<b>Telephone No. - N° de téléphone</b> (604) 775-9386 ( )	<b>FAX No. - N° de FAX</b> (604) 775-6633
<b>Destination - of Goods, Services, and Construction:</b> <b>Destination - des biens, services et construction:</b> DFO - Robertson Creek Hatchery - Port Alberni, BC	

**Instructions: See Herein**

**Instructions: Voir aux présentes**

<b>Delivery Required - Livraison exigée</b>	<b>Delivery Offered - Livraison proposée</b>
<b>Vendor/Firm Name and Address</b> <b>Raison sociale et adresse du fournisseur/de l'entrepreneur</b>	
<b>Telephone No. - N° de téléphone</b> <b>Facsimile No. - N° de télécopieur</b>	
<b>Name and title of person authorized to sign on behalf of Vendor/Firm</b> <b>(type or print)</b> <b>Nom et titre de la personne autorisée à signer au nom du fournisseur/</b> <b>de l'entrepreneur (taper ou écrire en caractères d'imprimerie)</b>	
<b>Signature</b>	<b>Date</b>

Solicitation No. - N° de l'invitation

F1700-130411/A

Client Ref. No. - N° de réf. du client

Amd. No. - N° de la modif.

001

File No. - N° du dossier

PWY-3-36199

Buyer ID - Id de l'acheteur

pw005

CCC No./N° CCC - FMS No/ N° VME

---

Refer to the attached Addendum No. 1 issued 04 December 2013

**F1700-130411/A**  
**ADDENDUM NO. 1**  
**DEPARTMENT OF FISHERIES AND OCEANS**  
**BRITISH COLUMBIA**  
December 3rd, 2013

**ADDENDUM NO. 1**

Date: December 3, 2013

**TO SPECIFICATIONS AND DRAWINGS FOR:**

DEPARTMENT OF FISHERIES AND OCEANS

Robertson Creek Hatchery

Port Alberni, BC

**The following changes/clarifications in the tender documents are effective immediately. This Addendum will form part of the Tender/Contract Documents.**

**Question**

Could you please forward to me the case histories relating to the use of fibreglass on previous Hatchery Pens in Canada?

**Answer**

The use of fibreglass rearing and holding tanks in both private and public aquaculture projects are well-documented. Fisheries and Oceans Canada has been successfully operating fiberglass rearing and holding vessels for over 40 years.

**Question**

At the Hatchery site, is it possible to hook into power there?

**Answer**

Power and water can be made available on-site by the owner. However, the type of electrical service is on an AS-IS basis.

**Question**

Is a 100% solids Epoxy topcoat and filler system an approved equivalent?

**Answer**

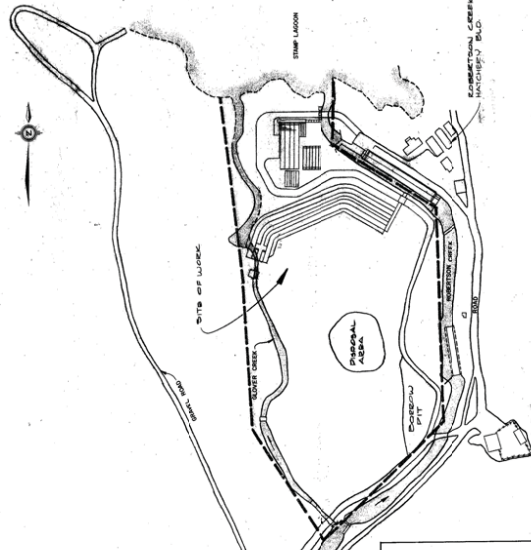
No, a 100% solids Epoxy topcoat and filler system will NOT be accepted as an approved equivalent.

**Additional Drawings**

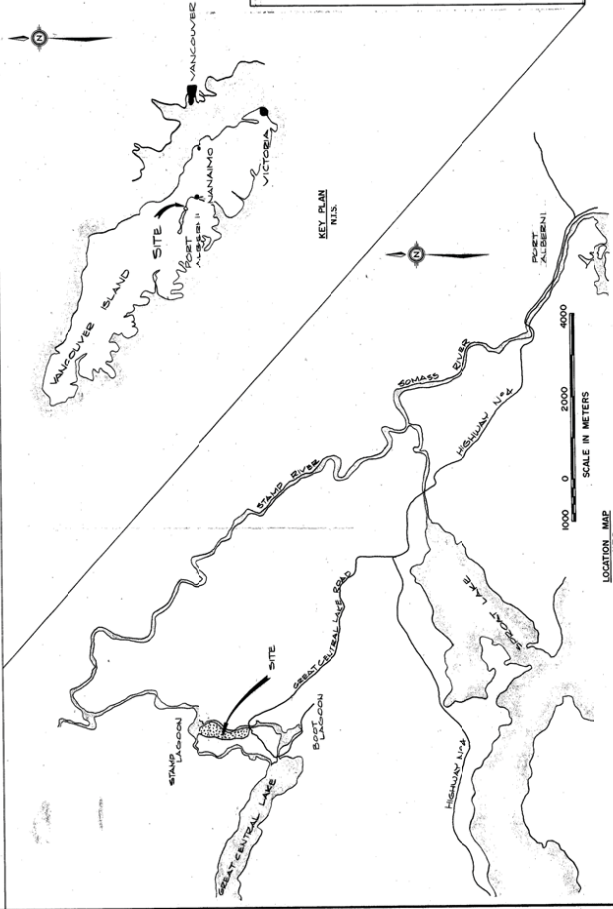
The attached drawings represent additional reference material to supplement the original tender drawings. All dimensions are to be verified on-site. The following is a drawing key to cross reference with the original drawings.

Original Drawing Number	Supplemental Drawing Number
31-17-M44	31-17-630
31-17-M45	31-17-761
31-17-M51	31-17-644

END OF ADDENDUM #1



SITE PLAN  
SCALE 1:2000



LOCATION MAP  
SCALE 1:2000

DRAWING LIST

421-430	EST. PLAN, AREA AND SITE PLAN AND INSET TO DRAWING	431-440	CONCRETE REINFORCING - CONCRETE REINFORCING
431-440	CONCRETE REINFORCING - CONCRETE REINFORCING	441-450	CONCRETE REINFORCING - CONCRETE REINFORCING
441-450	CONCRETE REINFORCING - CONCRETE REINFORCING	451-460	CONCRETE REINFORCING - CONCRETE REINFORCING
461-470	CONCRETE REINFORCING - CONCRETE REINFORCING	471-480	CONCRETE REINFORCING - CONCRETE REINFORCING
481-490	CONCRETE REINFORCING - CONCRETE REINFORCING	491-500	CONCRETE REINFORCING - CONCRETE REINFORCING
501-510	CONCRETE REINFORCING - CONCRETE REINFORCING	511-520	CONCRETE REINFORCING - CONCRETE REINFORCING
521-530	CONCRETE REINFORCING - CONCRETE REINFORCING	531-540	CONCRETE REINFORCING - CONCRETE REINFORCING
541-550	CONCRETE REINFORCING - CONCRETE REINFORCING	551-560	CONCRETE REINFORCING - CONCRETE REINFORCING
561-570	CONCRETE REINFORCING - CONCRETE REINFORCING	571-580	CONCRETE REINFORCING - CONCRETE REINFORCING
581-590	CONCRETE REINFORCING - CONCRETE REINFORCING	591-600	CONCRETE REINFORCING - CONCRETE REINFORCING
601-610	CONCRETE REINFORCING - CONCRETE REINFORCING	611-620	CONCRETE REINFORCING - CONCRETE REINFORCING
621-630	CONCRETE REINFORCING - CONCRETE REINFORCING	631-640	CONCRETE REINFORCING - CONCRETE REINFORCING
641-650	CONCRETE REINFORCING - CONCRETE REINFORCING	651-660	CONCRETE REINFORCING - CONCRETE REINFORCING
661-670	CONCRETE REINFORCING - CONCRETE REINFORCING	671-680	CONCRETE REINFORCING - CONCRETE REINFORCING
681-690	CONCRETE REINFORCING - CONCRETE REINFORCING	691-700	CONCRETE REINFORCING - CONCRETE REINFORCING
701-710	CONCRETE REINFORCING - CONCRETE REINFORCING	711-720	CONCRETE REINFORCING - CONCRETE REINFORCING
721-730	CONCRETE REINFORCING - CONCRETE REINFORCING	731-740	CONCRETE REINFORCING - CONCRETE REINFORCING
741-750	CONCRETE REINFORCING - CONCRETE REINFORCING	751-760	CONCRETE REINFORCING - CONCRETE REINFORCING
761-770	CONCRETE REINFORCING - CONCRETE REINFORCING	771-780	CONCRETE REINFORCING - CONCRETE REINFORCING
781-790	CONCRETE REINFORCING - CONCRETE REINFORCING	791-800	CONCRETE REINFORCING - CONCRETE REINFORCING
801-810	CONCRETE REINFORCING - CONCRETE REINFORCING	811-820	CONCRETE REINFORCING - CONCRETE REINFORCING
821-830	CONCRETE REINFORCING - CONCRETE REINFORCING	831-840	CONCRETE REINFORCING - CONCRETE REINFORCING
841-850	CONCRETE REINFORCING - CONCRETE REINFORCING	851-860	CONCRETE REINFORCING - CONCRETE REINFORCING
861-870	CONCRETE REINFORCING - CONCRETE REINFORCING	871-880	CONCRETE REINFORCING - CONCRETE REINFORCING
881-890	CONCRETE REINFORCING - CONCRETE REINFORCING	891-900	CONCRETE REINFORCING - CONCRETE REINFORCING
901-910	CONCRETE REINFORCING - CONCRETE REINFORCING	911-920	CONCRETE REINFORCING - CONCRETE REINFORCING
921-930	CONCRETE REINFORCING - CONCRETE REINFORCING	931-940	CONCRETE REINFORCING - CONCRETE REINFORCING
941-950	CONCRETE REINFORCING - CONCRETE REINFORCING	951-960	CONCRETE REINFORCING - CONCRETE REINFORCING
961-970	CONCRETE REINFORCING - CONCRETE REINFORCING	971-980	CONCRETE REINFORCING - CONCRETE REINFORCING
981-990	CONCRETE REINFORCING - CONCRETE REINFORCING	991-1000	CONCRETE REINFORCING - CONCRETE REINFORCING

DEPARTMENT OF FISHERIES AND OCEANS  
SALMONID ENHANCEMENT PROGRAM

ROBERTSON CREEK HATCHERY EXPANSION  
CONTRACT #2  
KEY PLAN, AREA AND SITE PLAN  
AND INDEX TO DRAWINGS

DATE	AS SHOWN
DATE	MARCH, 1990
DRAWING NUMBER	31-17-630
REVISION	2

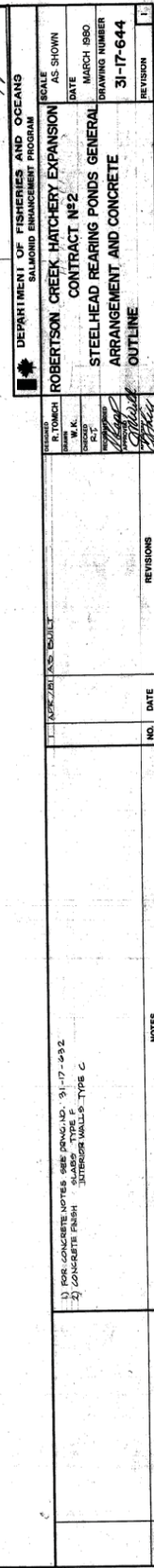
AS BUILT DRAWING  
DATE: April 28, 1991  
RESIDENT ENGINEER: [Signature]  
PROJECT ENGINEER: [Signature]

NO.	DATE	REVISIONS
1		
2		

REFERENCE DRAWINGS

ENC. NO.

31-17-630-100



AS BUILT DRAWING  
DATE: April 28, 1981  
RESIDENT ENGINEER: [Signature]  
PROJECT ENGINEER: [Signature]



