

12/16/11

11:01:30a

+001.3m↑



5T

Start of survey

12/16/11

12:57:19p

+001.3m↑

5T

Start of survey

12/16/11

01:08:10p

+001.3m↑

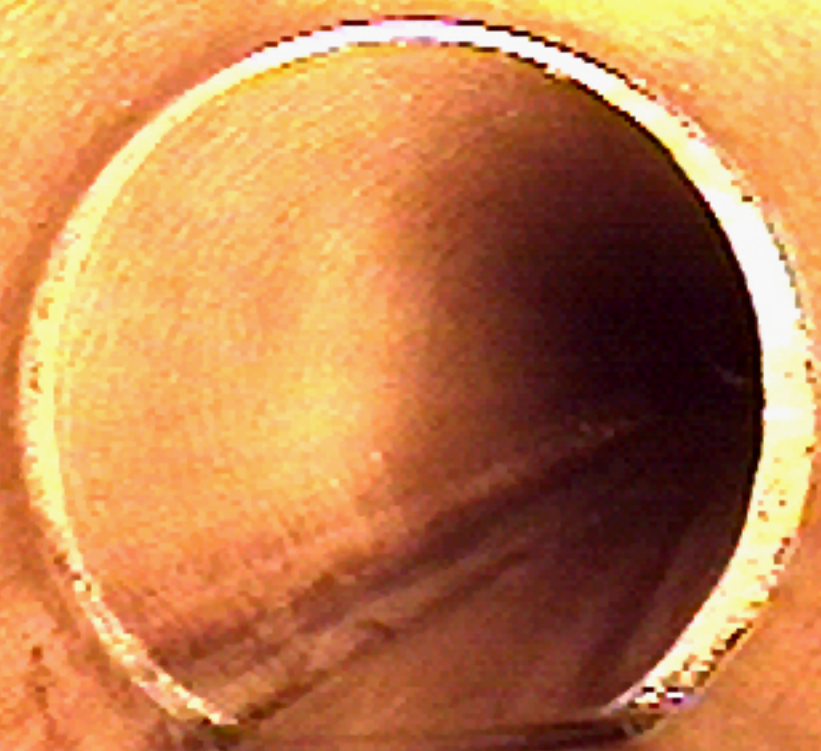
5T

Start of survey

12/16/11

01:26:36p

+001.3m↑



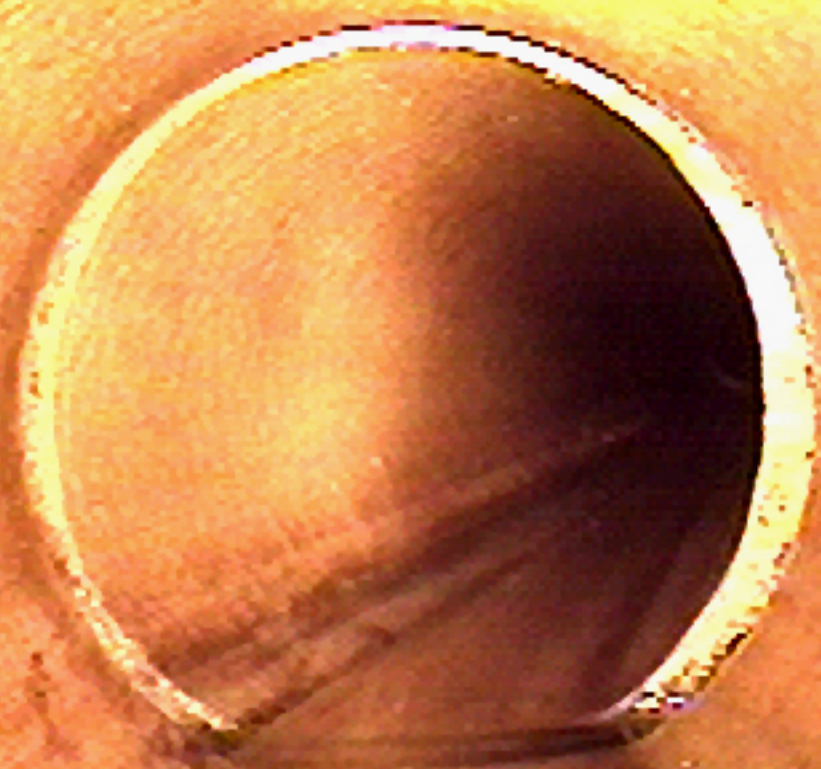
5T

Start of survey

12/16/11

01:27:02p

+001.3m↑



LR Line of sewer deviates right  
% height/diameter

12/16/11

01:35:28p

+024.2m↑

RF

Roots fine

12/16/11

01:38:04p

+031.9m↑

CM Longitudinal cracking  
(moderate)

12/16/11

01:39:57p

+036.6m↑

RF

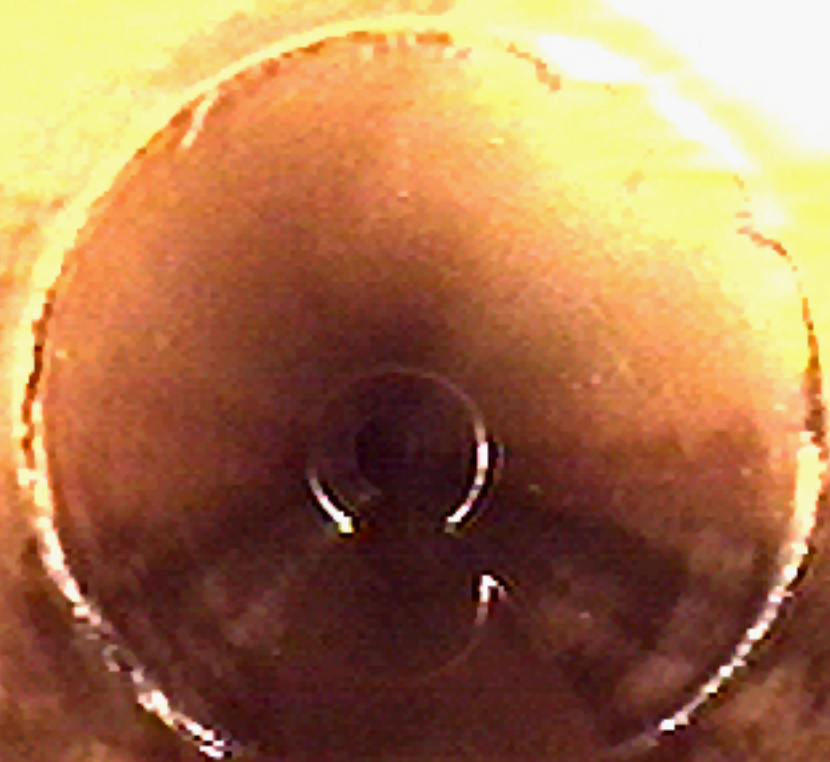
Roots fine



12/16/11

01:41:30p

+040.4m↑



RF

Roots fine

12/16/11

01:45:33p

+051.8m↑

EL Encrustation light,  
(position), < 5% cross-sectional area  
loss

12/16/11

01:46:25p

+053.2m↑

EL Encrustation light,  
(position), < 5% cross-sectional area  
loss

12/16/11

11:03:14a

+004.5m↑

EL Encrustation light,  
(position), < 5% cross-sectional area  
loss

12/16/11

01:47:18p

+054.5m↑

EL Encrustation light,  
(position), < 5% cross-sectional area  
loss

12/16/11

01:48:29p

+057.3m↑

EL Encrustation light,  
(position), < 5% cross-sectional area  
loss

12/16/11

01:49:31p

+058.6m↑

EL Encrustation light,  
(position), < 5% cross-sectional area  
loss. AT JOINTS

12/16/11

01:52:26p

+065.7m↑



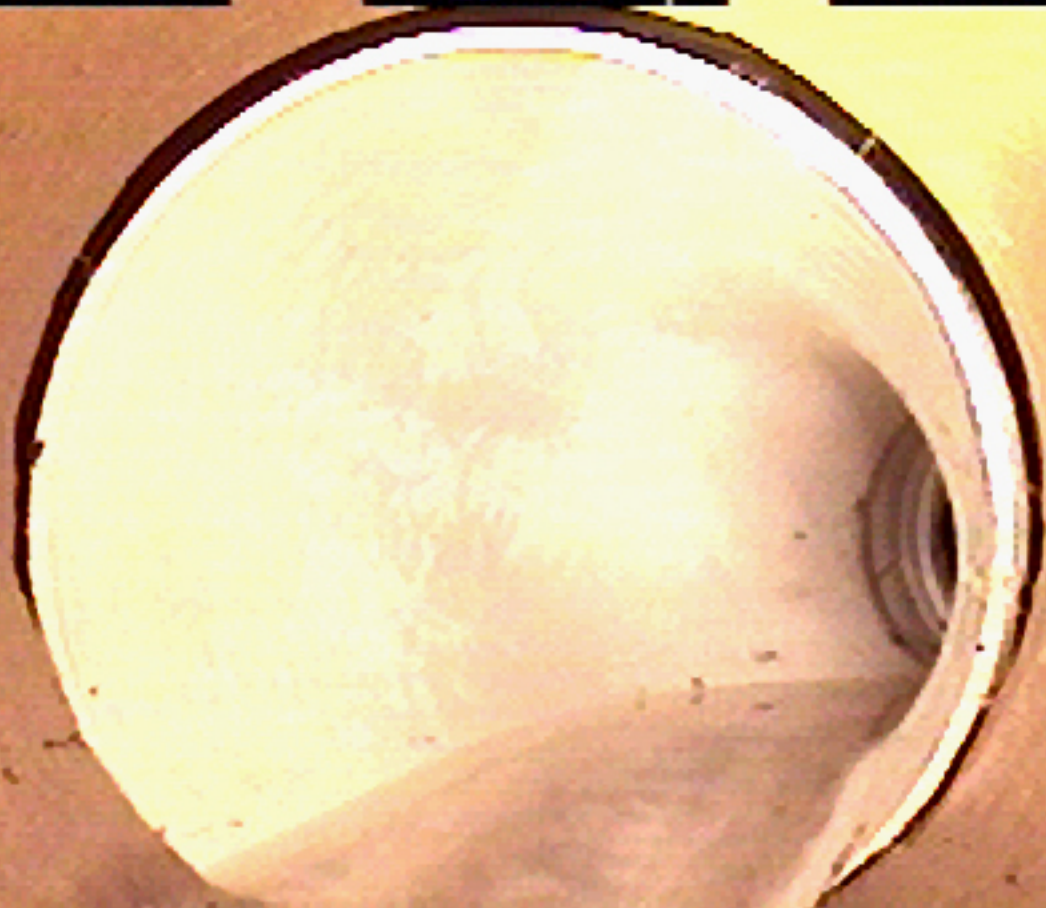
EL Encrustation light,  
(position), < 5% cross-sectional area  
loss. END OF DEFECT



12/16/11

01:52:51p

+065.8m↑



MC Pipe material changes to PVC  
Polyvinylchloride Pipe

12/16/11

01:53:46p

+066.4m↑

5A  
SEEN

Survey abandoned. MH CAN BE

12/16/11

02:14:36p

+001.3m↑

5T

Start of survey

12/16/11

02:31:27p

+046.3m↑

DL Open joint (light), <1\* pipe  
thickness

12/16/11

02:38:54p

+071.2m↑

JL Joint displaced (light), < 1\*  
pipe wall thickness

12/16/11

02:41:28p

+077.0m↑

FX

Broken Pipe

12/16/11

11:07:11a

+012.2m↑

FX

Broken Pipe

12/16/11

02:44:54p

+086.5m↑

RF

Roots fine



12/16/11

02:46:08p

+089.2m↑

RF

Roots fine

12/16/11

02:50:57p

+102.6m↑

LL Line of sewer deviates left  
% height/diameter

12/16/11

02:51:38p

+103.1m↑

0L Open joint (light), <1\* pipe  
thickness

12/16/11

02:54:06p

+103.7m↑

JM Joint displaced (moderate), >  
1\* pipe wall thickness . AT MH

12/16/11

02:54:34p

+103.7m↑

5A  
SEEN

Survey abandoned. MH CAN BE

12/16/11

03:28:23p

+001.3m↑

5T

Start of survey

12/16/11

03:36:54p

+030.8m↑

CN Service connection diameter  
mm at 10 o'clock material

12/16/11

03:57:56p

+100.8m↑

FH

End of survey



12/21/11

02:02:16p

+000.0m↑

5T

Start of survey

12/16/11

11:09:27a

+018.1m↑

MC Pipe material changes to PVC  
Polyvinylchloride Pipe

12/21/11

02:07:04p

+013.1m↑

DEG      Debris grease,    % cross-  
sectional area loss

12/21/11

02:10:05p

+017.1m↑

DEG Debris grease, % cross-sectional area loss. DEFECT ENDS

12/21/11

02:11:03p

+018.8m↑

DEG      Debris grease,    % cross-  
sectional area loss

12/21/11

02:13:54p


+024.3m↑

DEG Debris grease, % cross-  
sectional area loss. DEFECT ENDS

12/21/11

02:15:28p

+028.1m↑

A photograph of a tunnel interior. The walls are rough and textured, with a yellowish-brown hue. A person is visible in the distance, standing near a bright light source. The light source is a circular object, possibly a lamp or a camera lens, which is glowing and casting a beam of light. The overall scene is dimly lit, with the primary light coming from the person's position.

EL Encrustation light,  
(position), < 5% cross-sectional area  
loss

12/21/11

02:25:55p

+053.9m↑

JM Joint displaced (moderate), >  
1\* pipe wall thickness



12/21/11

02:31:10p

+065.6m↑

EL Encrustation light,  
(position), < 5% cross-sectional area  
loss. DEFECT ENDS

12/21/11

02:32:56p

+069.3m↑

CL Circumferential cracking  
(light)

12/21/11

02:33:33p

+069.7m↑

FH

End of survey

12/16/11

11:12:36a

+031.2m↑

FH

End of survey

12/16/11

12:03:38p

+001.3m↑

5T

Start of survey

12/16/11

12:11:23p

+027.1m↑

FH

End of survey

12/16/11

12:19:38p

+001.3m↓

5T

Start of survey

12/16/11

12:33:21p

+050.8m↑

FH

End of survey