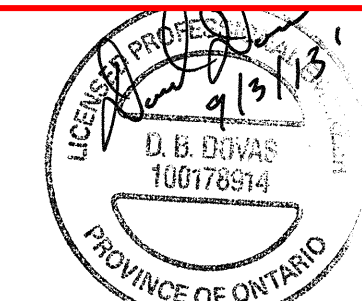


**RECEIVED**  
Project #: R.033225.001  
DATE: 2013.09.09  
Tender Review  
PRR Control #: 13-09-148  
The review of these drawings and/or specifications by PWGSC does not relieve the designer of the responsibility for accuracy, correctness and compliance with National Codes and other applicable codes and standards.  
PWGSC - A&E Resources  
Professional & Technical Programs



04	ISSUED FOR TENDER	2013/09/03
03	ISSUED FOR 100% OWNER REVIEW	2013/07/25
02	SUBMITTED FOR 99% DESIGN	2011/07/18
01	ISSUED FOR REVIEW	2011/02/15
revision		date

Do not scale drawings.  
Verify all dimensions and conditions on site and immediately notify the Departmental Representative of all discrepancies.



This drawing has been prepared for the use of AECOM's client and may not be used, reproduced or relied upon by third parties, except as agreed by AECOM and its client, as required by law or for use by governmental reviewing agencies. AECOM accepts no responsibility, and denies any liability, whatsoever, to any party that modifies this drawing without AECOM's express written consent.  
Do not scale this document. All measurements must be obtained from stated dimensions.

project title  
titre du projet  
**WARKWORTH** Ontario  
**MEDIUM SECURITY INSTITUTION**  
**UNDERGROUND DUCT REPLACEMENT**

drawing title  
titre du dessin  
**BLDG. WW03**  
**1ST FLOOR PLAN**  
**HVAC-HYDRONIC PIPING**

drawn by  
dessiné par  
L. TAURO

designed by  
conçu par  
A. KABBANI

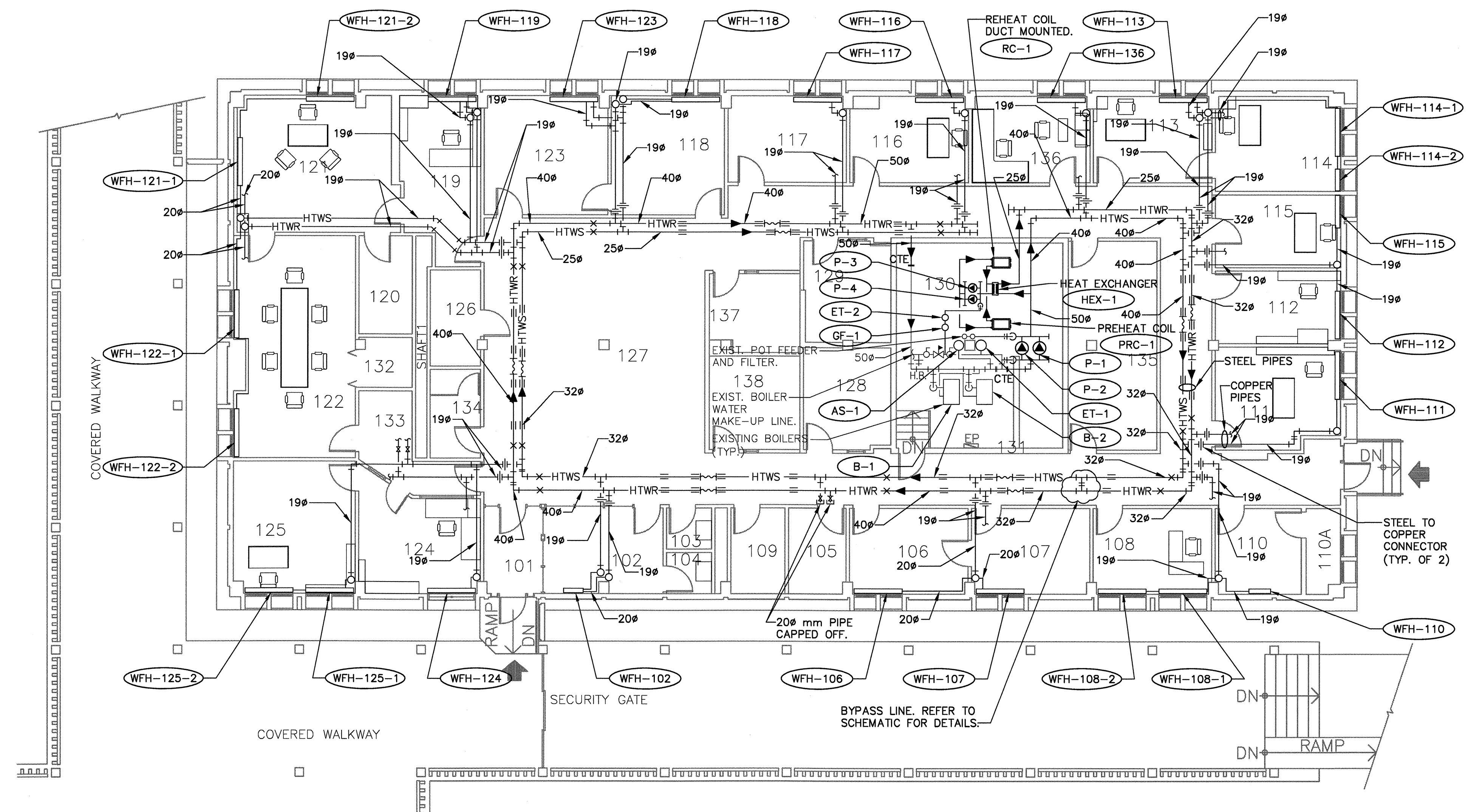
approved by  
approuvé par  
D. DOVAS

bid  
offre  
O. TABAREZ  
project manager  
administrateur  
de projets

project date  
date du projet  
2013-07-25

project no.  
no. du projet  
R.033225.001

drawing no.  
dessiné no.  
WDR-WW03-H-03



ROOM INDEX			
101	FOYER	109	JANITOR'S CLOSET
102	INMATE WAITING RM	110	OFFICE
103	LAVATORY	110A	ELECTRICAL CLOSET
104	LAVATORY	111	BOARDROOM
105	LAN ROOM	112	OFFICE
106	OFFICE	113	OFFICE
107	OFFICE	114	OFFICE
108	OFFICE		
		115	OFFICE
		116	OFFICE
		117	OFFICE
		118	OFFICE
		119	OFFICE
		120	LAVATORY
		121	GENERAL OFFICE
		122	BOARDROOM
		123	OFFICE
		124	FOYER
		125	OFFICE
		126	WOMEN'S W/R
		127	LOUNGE
		128	OFFICE
		129	INTERVIEW ROOM
		130	MECHANICAL ROOM
		131	CORRIDOR
		132	COFFEE
		133	COFFEE
		134	MEN'S W/R
		135	BOARDROOM
		136	OFFICE
		137	OFFICE
		138	OFFICE

- GENERAL NOTES:**
- ALL INDICATED PIPE SIZES ARE I.D.
  - SLOPE HORIZONTAL PIPING MAINS TO PROVIDE A MINIMUM CONTINUOUS UPGRADE OF 25MM IN 6M TO HIGH POINTS. SLOPE BRANCH SUPPLY AND RETURN PIPING CONNECTIONS TO EQUIPMENT AT A MINIMUM OF 25MM IN 1.2M. LEAVE SUFFICIENT ROOM AT HIGH POINTS FOR INSTALLATION OF AIR VENTS.
  - PROVIDE PIPING EXPANSION JOINTS. PIPING ALIGNMENT GUIDES & PIPE ANCHORS AS SPECIFIED.
  - CONTRACTOR TO MOUNT HEAT EXCHANGER (HEX-1) ON FLOOR OR WALL.

5. ASBESTOS CONTAINING PLASTER FITTINGS LOCATED IN ROOM 130. REFER TO DESIGNATED SUBSTANCES AND HAZARDOUS MATERIALS SURVEYS IN ANNEX A.