

**Correctional services Canada**

---

**ADDENDUM No 3 (mechanical-electrical)**

---

Construction of a building for the emergency response team lot # 3  
Port-Cartier Institution

Project no: 550-2-368-3205

---

This addendum forms an integral part of bid documents

**Engineering**

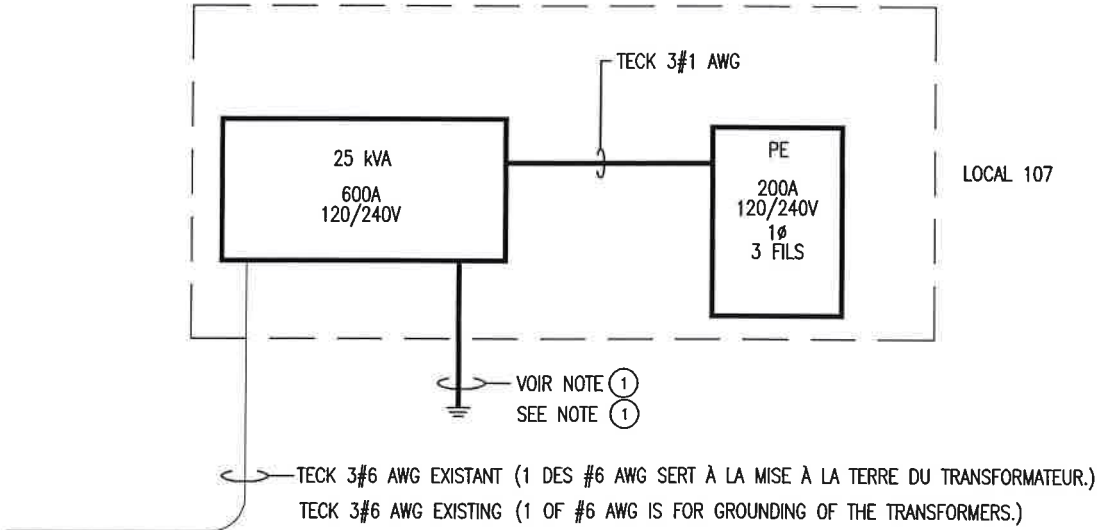
**General:**

1. Waterworks and sewer services will be under the trailer. They are situated at the location of room 107.
2. The 101 room must be heated by the ceiling, because it is impossible to install baseboards on the outskirts of the local. The trailer manufacturer shall state the method chosen.
3. The maximum number of 3 outlets per circuit applies to the whole of the premises.
4. The distance from one socket to each 1.5 m applies to all premises
5. Smoke detectors will be branded GE model SIGA PHS. Thermal detectors are GE brand SIGA HRC 57 ° C increase in temperature.
6. The server room will be air-conditioned like the entire trailer.
7. For electrical distribution, see attached sketch that explains the distribution from the power that comes from the pump room, which has already been installed.



**René Fillion, Engineer**  
**Roche ltd, Consulting Group**

**January 9, 2014**



NOTE ①: LA MISE À LA TERRE DU SECONDAIRE DU TRANSFORMATEUR DE VOLTAGE PASSERA AVEC LE FILAGE D'ALIMENTATION DU TRANSFORMATEUR JUSQU'À LA STATION DE POMPAGE ET DEVRA ÊTRE RACCORDÉ À LA MISE À LA TERRE DU BÂTIMENT. TOUT LE FILAGE SERVANT À LA MISE À LA TERRE DEVRA ÊTRE IDENTIFIÉ DE COULEUR VERT AUX EXTÉMITÉS.

NOTE ①: THE SECONDARY OF THE TRANSFORMERS USE THE WIRE OF THE FEEDING OF THE TRANSFORMERS FROM THE PUMP HOUSE AND HAVE TO BE CONNECTED TO THE GROUND OF THE BUILDING. THIS WIRE HAVE TO BO IDENTIFIED WITH GREEN TAPE AT EACH END.

**PRÉCISION SECTION 01005 - DISTRIBUTION ÉLECTRIQUE**

ÉCHILLE: AUCUNE

**NOTE SECTION 01005 - ELECTRICAL DISTRIBUTION**

SCALE: NONE



ingénieurs:  333, avenue de la Cathédrale, bureau 200 Rimouski, Québec, Canada G5L 5J5 Téléphone : 418.725.7275 Télécopieur : 418.725.5625 www.roche.ca	propriétaire:  Administration régionale du Québec Correctional Service Canada Quebec Regional Headquarters Canada	sujet:  ADDENDA 3	<b>ÉLECTRICITÉ</b>	
	nom du projet: <b>CONSTRUCTION D'UN ÉDIFICE  POUR L'ÉQUIPE  D'INTERVENTION D'URGENCE</b>		conçu par: R.F.	dessiné par: J-L.C.
			échelle: INDIQUÉE	feuille no: <b>1 / 1</b>
			# projet: 106156.001	