



- POTENTIAL BORROW SOURCE NOT INVESTIGATED

- POTENTIAL BEACH LANDING AREA

- POTENTIAL CAMP STAGING AREA

- POTENTIAL POTABLE WATER SOURCE AREA

REFERENCE:

REMEDIAL ACTION PLAN,
FORMER WEATHER STATION
NOTTINGHAM ISLAND, NUNAVUT
APRIL 2013, EBA, A TETRA TECH COMPANY

100	0	100	200	300m
SCALE: 1:4000 METRIC 24"x36" 1:8000 METRIC 11"x17"				
A	13/09/20	ISSUED FOR 100% SUBMISSION	GRS	
B	13/07/31	ISSUED FOR 99% SUBMISSION	GRS	
C	13/07/19	ISSUED FOR 75% SUBMISSION	GRS	
NO.	YY/MM/DD	DESCRIPTION	BY	


CLIENT:

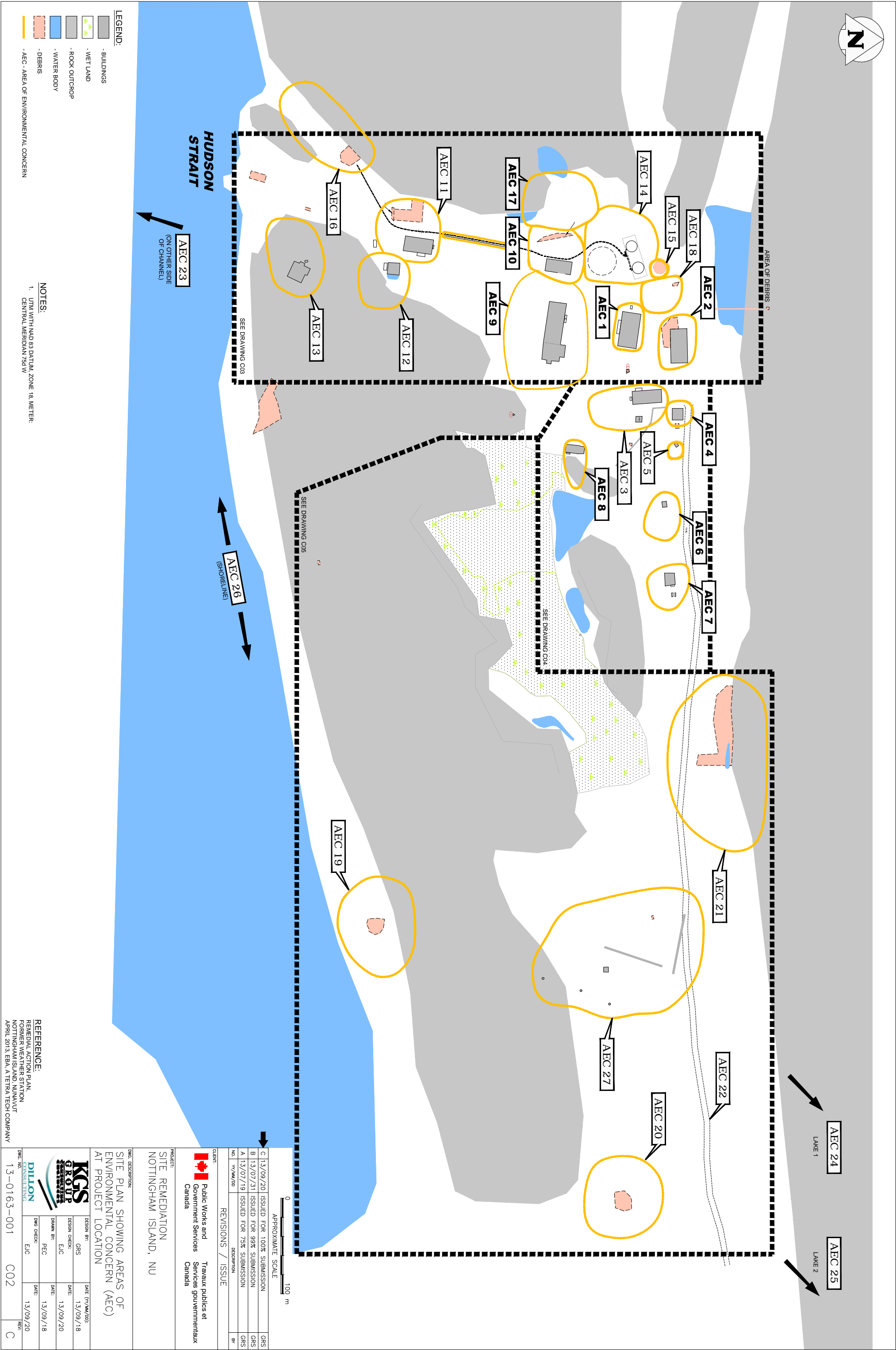
Public Works and Government Services Canada Travaux publics et Services gouvernementaux Canada

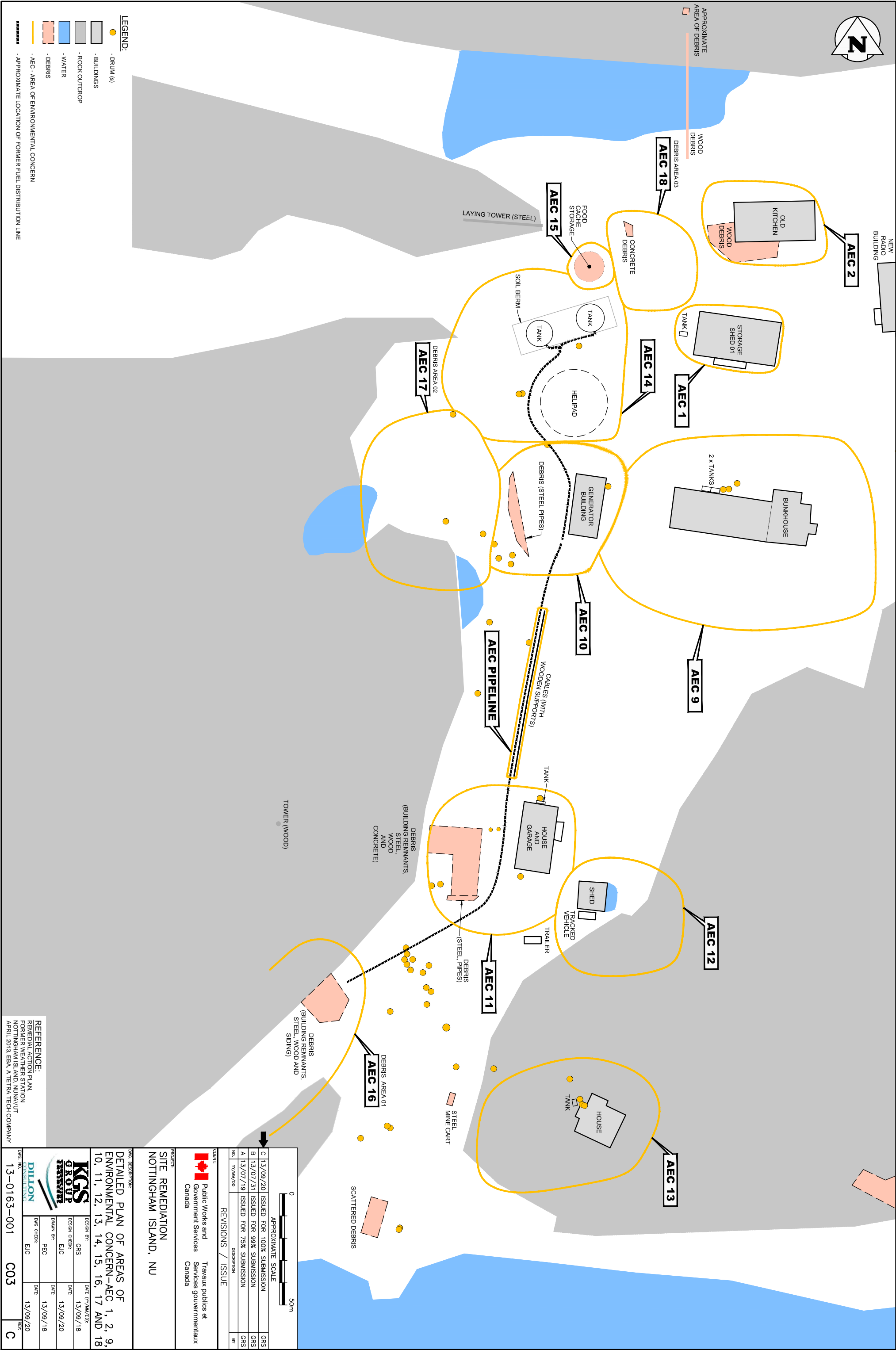
PROJECT:
SITE REMEDIATION
NOTTINGHAM ISLAND, NU

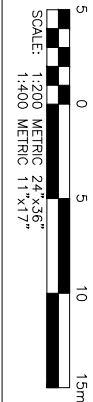
DWG. DESCRIPTION:

OVERALL SITE PLAN

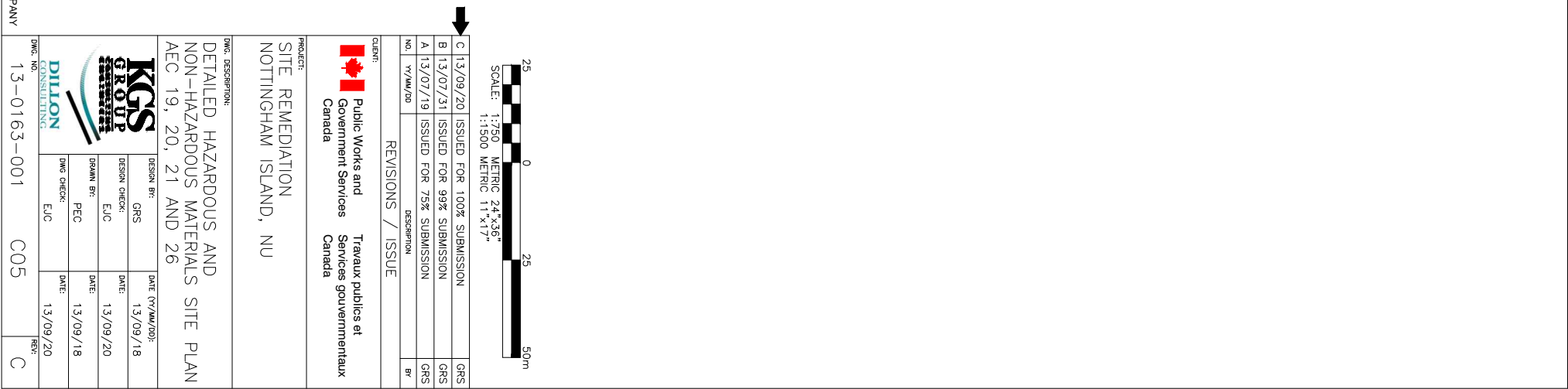
	DESIGN BY:	DATE: 07/04/2018
	GRS	13/09/18
	DESIGN CHECK:	DATE:
	E/C	13/09/20
	DRAWN BY:	DATE:
	PEC	13/09/18
	DMG CHECK:	DATE:
	E/C	13/09/20

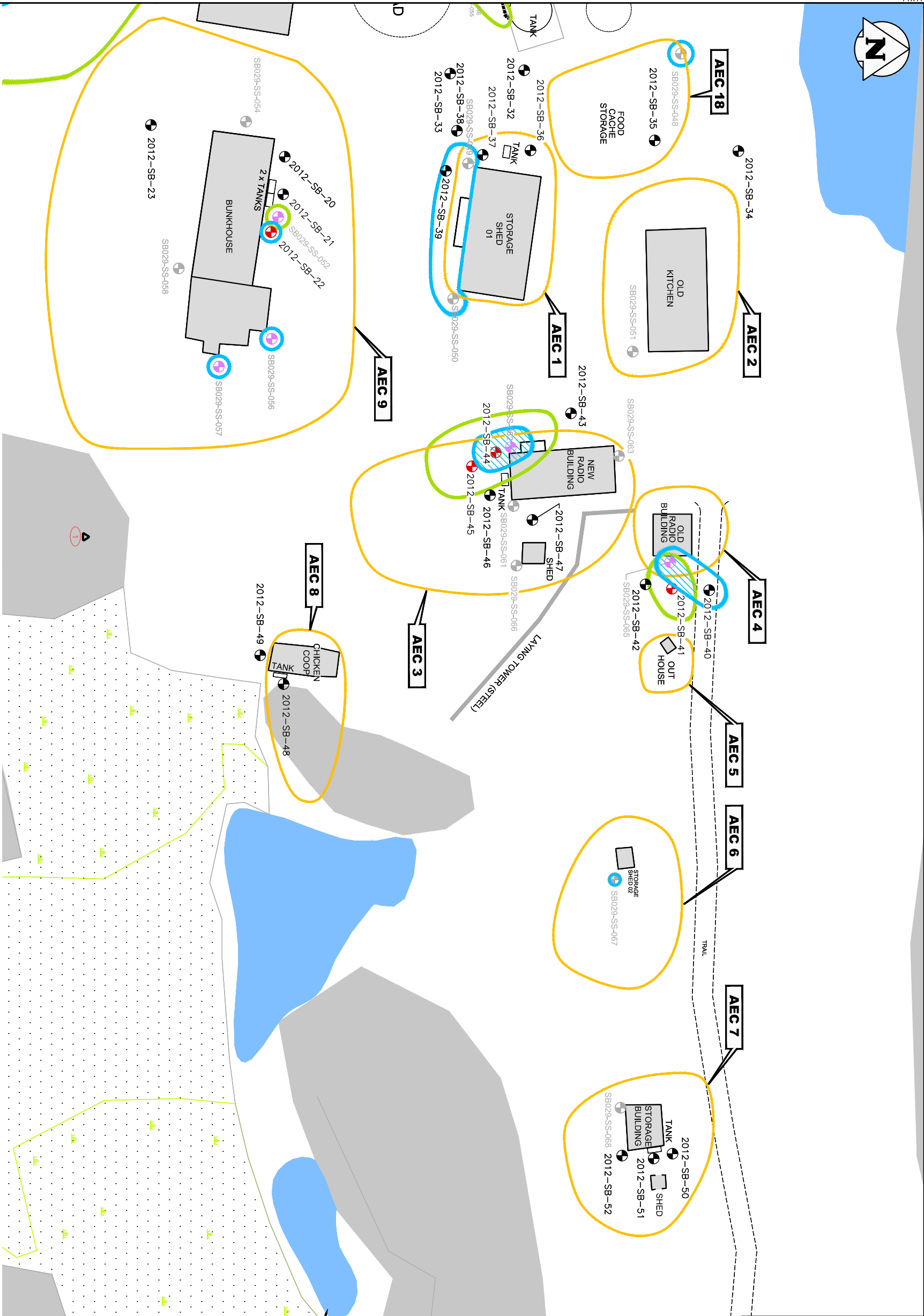






REFERENCE:
REMEDIAL ACTION PLAN,
FORMER WEATHER STATION
NOTTINGHAM ISLAND, NUNAVUT
APRIL 2013, EBA, A TETRA TECH COMPANY



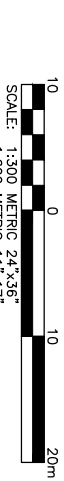
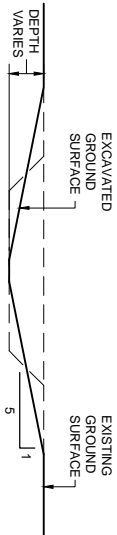
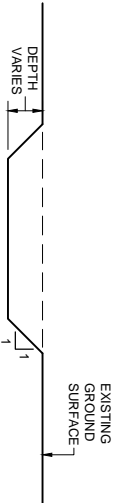
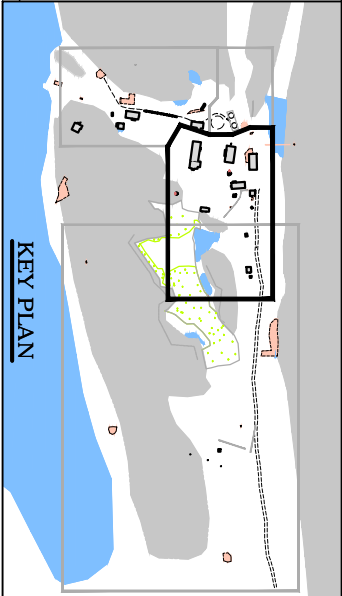


- LEGEND:**

 - SOIL SAMPLE LOCATION
 - DRUM (ø)
 - METALS PLUME
 - PHC PLUME
 - CO-CONTAMINATION
 - AEC - AREA OF ENVIRONMENTAL CONCERN
- EBA SAMPLE**
(EBA SAMPLE ID IN BLACK)

 - BELOW APPLICABLE PHC CRITERIA
 - ABOVE APPLICABLE PHC CRITERIA
 - WESA SAMPLE
(WESA SAMPLE ID IN GREY)
 - BELOW APPLICABLE PHC CRITERIA
 - ABOVE APPLICABLE PHC CRITERIA
- BUILDINGS**

 - BUILDINGS
 - WET LAND
 - ROCK OUTCROP
 - WATER BODY



NO.	REV/AM/20	DESCRIPTION	BR.
A	13/07/19	ISSUED FOR 75% SUBMISSION	GRS
B	13/07/31	ISSUED FOR 99% SUBMISSION	GRS
C	13/09/20	ISSUED FOR 100% SUBMISSION	GRS

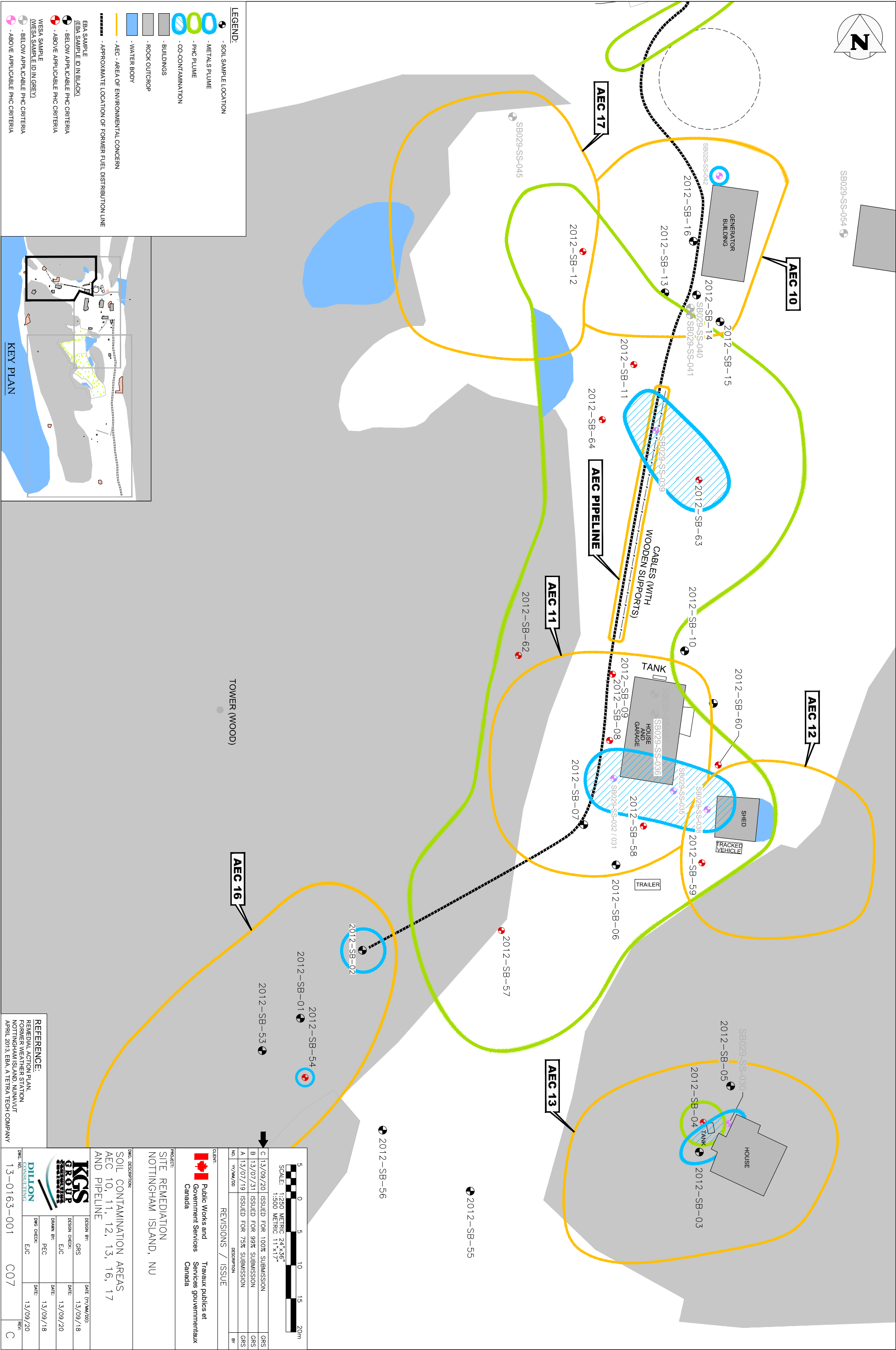
CLIENT:	REVISIONS / ISSUE
Public Works and Government Services Canada	
Travaux publics et Services gouvernementaux Canada	

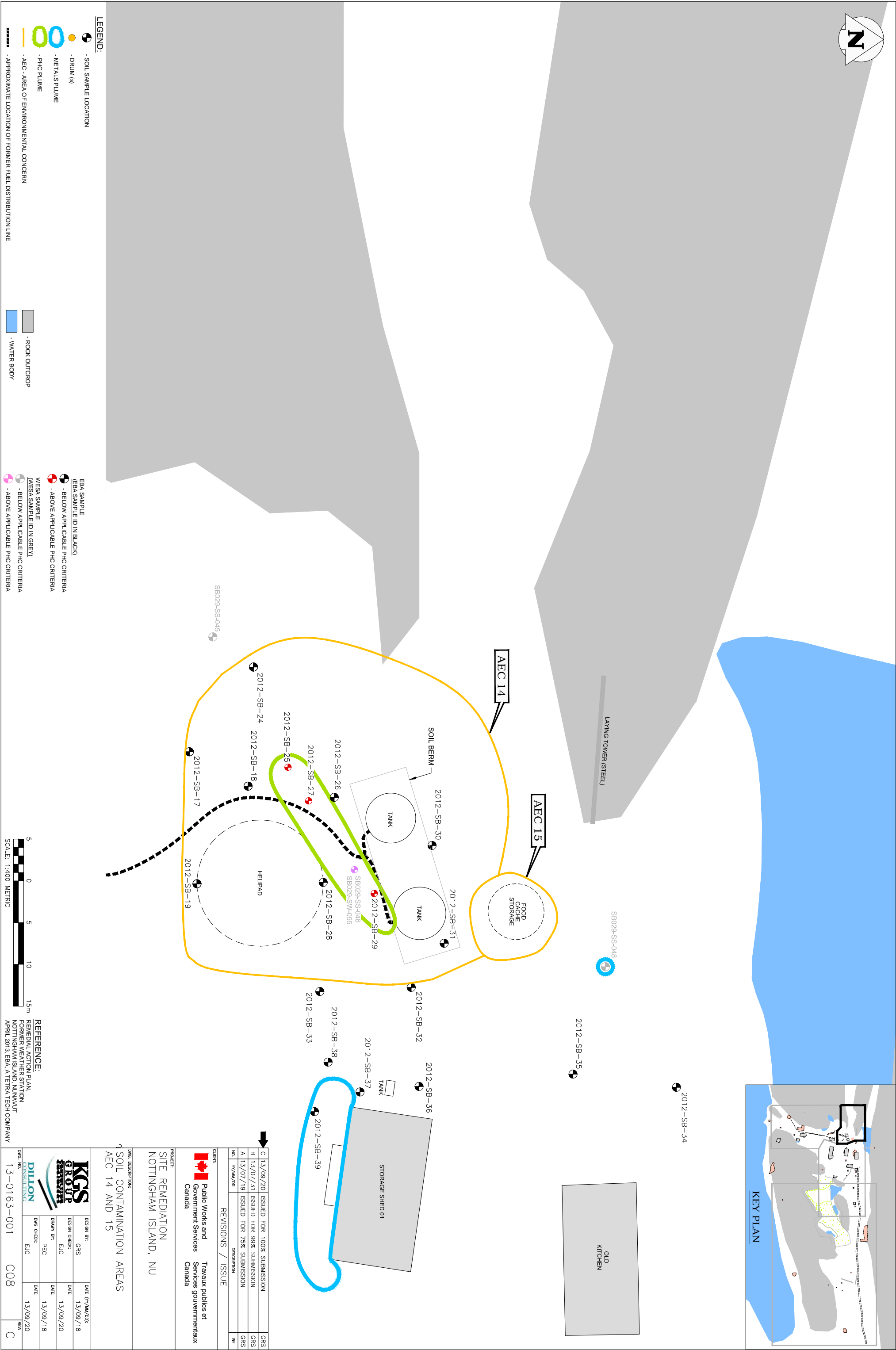
PROJECT:
SITE REMEDIATION NOTTINGHAM ISLAND, NU

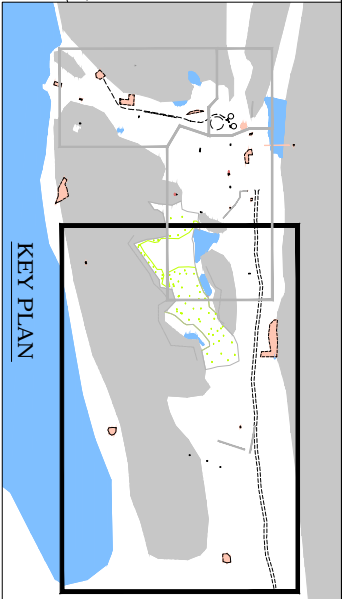
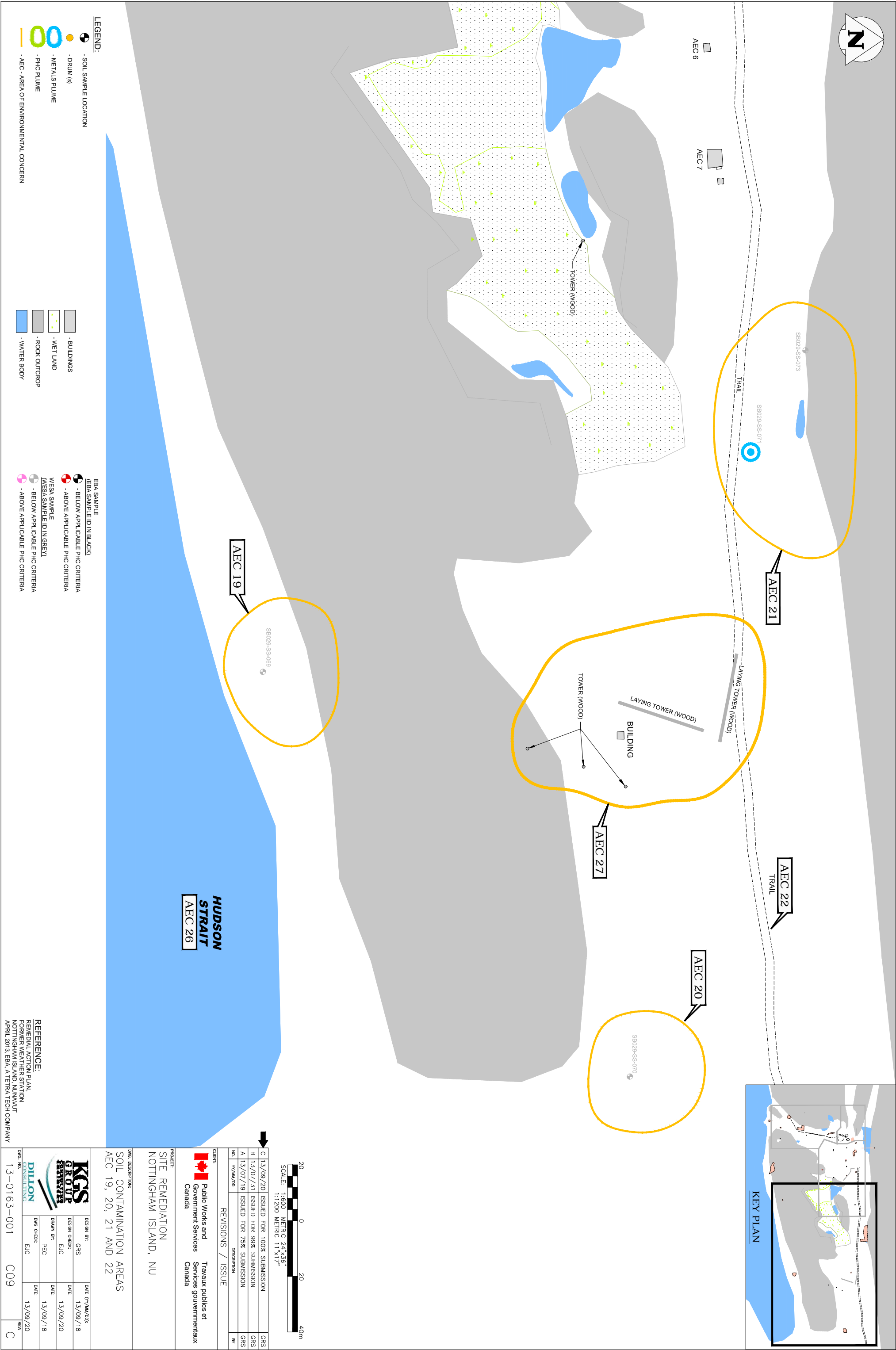
SOIL CONTAMINATION AREAS
AEC 1, 2, 3, 4, 5, 6, 7, 8, 9 AND 18

DESIGN BY:	DATE (YY/MM/DD):
GRS	13/09/18
DESIGN CHECK:	DATE:
EJC	13/09/20
DRAWN BY:	DATE:
PEC	13/09/18
DWG CHECK:	DATE:
EJC	13/09/20

PROJECT NO.	PROJECT NAME	PROJECT CODE	PROJECT STATUS
13-0163-001	C06		C







LEGEND:

- SOIL SAMPLE LOCATION
- DRUM (S)
- METALS PLUME
- PHC PLUME
- AEC - AREA OF ENVIRONMENTAL CONCERN

EBAS SAMPLE (EBA SAMPLE ID IN BLACK)

- BELOW APPLICABLE PHC CRITERIA
- ABOVE APPLICABLE PHC CRITERIA

WESAS SAMPLE (WESA SAMPLE ID IN GREY)

- BELOW APPLICABLE PHC CRITERIA
- ABOVE APPLICABLE PHC CRITERIA

HUDSON STRAIT AEC 26

REFERENCE:

REMEDIATION ACTION PLAN,
FORMER WEATHER STATION,
NOTTINGHAM ISLAND, NU
APRIL 2013, EBA, A TETRA TECH COMPANY

20		0		20		40m	
SCALE: 1:600		METRIC 24"x36"		1:1200		METRIC 11"x17"	
C		13/09/20	ISSUED FOR 100% SUBMISSION	GRS		GRS	
B		13/07/31	ISSUED FOR 99% SUBMISSION	GRS		GRS	
A		13/07/19	ISSUED FOR 75% SUBMISSION	GRS		GRS	
NO.		1/1/00/20	DESCRIPTION	BY		BY	
REVISIONS / ISSUE		DESCRIPTION		BY		BY	
CLIENT:		Public Works and Government Services Canada		Trapeux publics et Services gouvernementaux Canada		Trapeux publics et Services gouvernementaux Canada	
PROJECT:		SITE REMEDIATION NOTTINGHAM ISLAND, NU		SITE REMEDIATION NOTTINGHAM ISLAND, NU		SITE REMEDIATION NOTTINGHAM ISLAND, NU	
DWC DESCRIPTION:		SOIL CONTAMINATION AREAS AEC 19, 20, 21 AND 22		SOIL CONTAMINATION AREAS AEC 19, 20, 21 AND 22		SOIL CONTAMINATION AREAS AEC 19, 20, 21 AND 22	
DESIGN BY:		GRS	DATE (YY/MM/DD):	13/09/18		13/09/18	
DESIGN CHECK:		E/C	DATE:	13/09/20		13/09/20	
DRAWN BY:		PEC	DATE:	13/09/18		13/09/18	
DWC CHECK:		E/C	DATE:	13/09/20		13/09/20	
DWC NO.		13-0163-001	C09	C09		C	