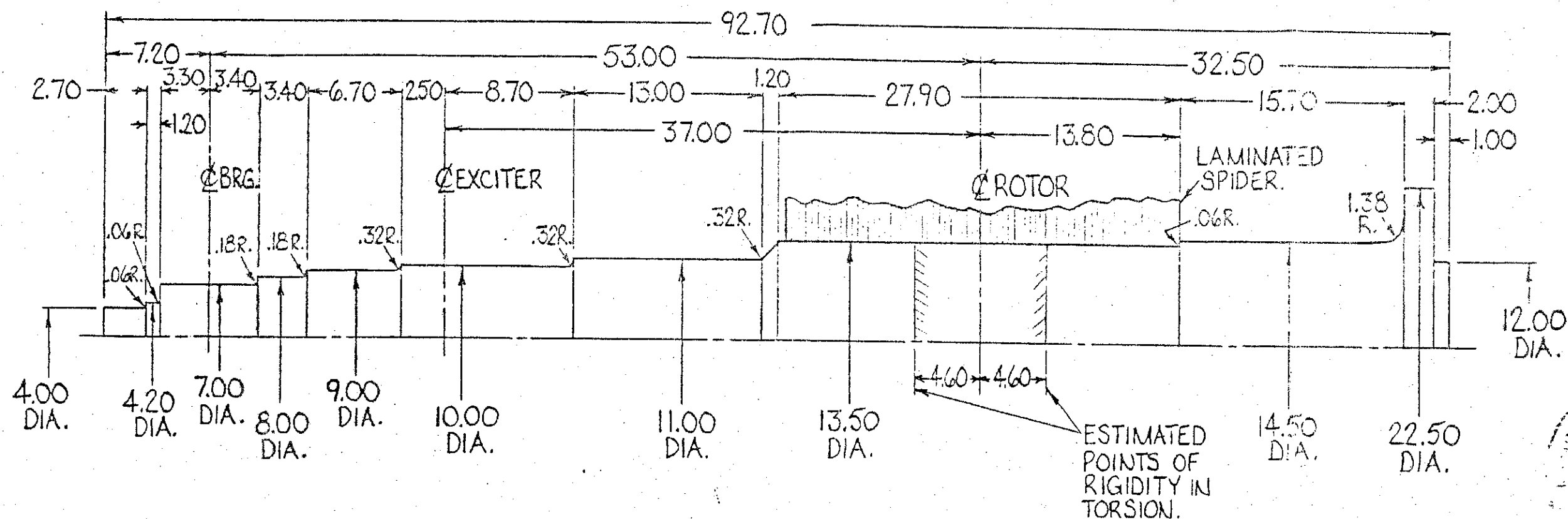


				16 LEVEL 17				CANADIAN GENERAL ELECTRIC COMPANY LIMITED				CONT. ON SHT.				SHT. NO.			
				63 STOCK 67				I.A.D.				PROD 79 80		PARTS LIST FOR		DRAWING 4002B1157 BF			
				68 ORIGIN 72				PETERBOROUGH PLANT											
				77				19 TITLE				SHAFT PROFILE							
				78 STD/SPC				FIRST MADE FOR CLASS 1100 NAVAFIDS VESSEL				REQ'N. 9280-248-OW3							
12 GROUP 15				1				12 15 17 19 21				32 36				54 55 63 68 77 78			
19 QUANTITY 27 28				31				42 45 47 48								75 77			
				PT				DRAWING				P.G. NO. LEV				NAME AND DESCRIPTION			
																STK ORIG			



NOTES :

- 1.- APPROX. WT. OF ROTOR (INCLUDING SHAFT & EXCITER) - 13,000 LB.
- 2.- APPROX. WT. OF SHAFT - 3,000 LB.
- 3.- APPROX. WT. OF EXCITER ARMATURE - 400 LB.
- 4.- WK² OF ROTOR (INCLUDING SHAFT & EXCITER) - 16,200 LB. FT.²
- 5.- SHAFT MATERIAL - FORGED STEEL A.I.S.I 1020 OR BETTER
TO MEET LLOYD'S 1983 RULES, PART 2, CHAPTER 5, SECTIONS 3 & 4.
MINIMUM TENSILE STRENGTH 400-600 N/mm² (58-87 K.S.I.)
- 6.- ROTOR FIT ON SHAFT - .007 TO .009 TIGHT.
- 7.- WK² OF EXCITER ARMATURE - 150 LB. FT.²

DRAWN BY
J. RA

REVISIONS		PRINTS TO	
1	DEC.13-83/ADD RADII, SPIDER & RIGIDITY POINTS, REVISED NOTE 5. JR	P	
2	APR.13-84/1.38R. WAS 2.00 JR		
3	MAY 2-84/REVISED DIM. JR		
		REF.	

DRAWN BY

J. RAY

CHECKED ☒

7 DEC. 5/83

4002B||57BF

GEN 2100KW 2625KVA
8PF 3/60/600V
2526 AFL
2779 A OVERLOAD
BRUSHLESS
EXCITER
3.3 AFL
3.5 A OVERLOAD
17.1 Ω @ 25°C
FIELD ONLY

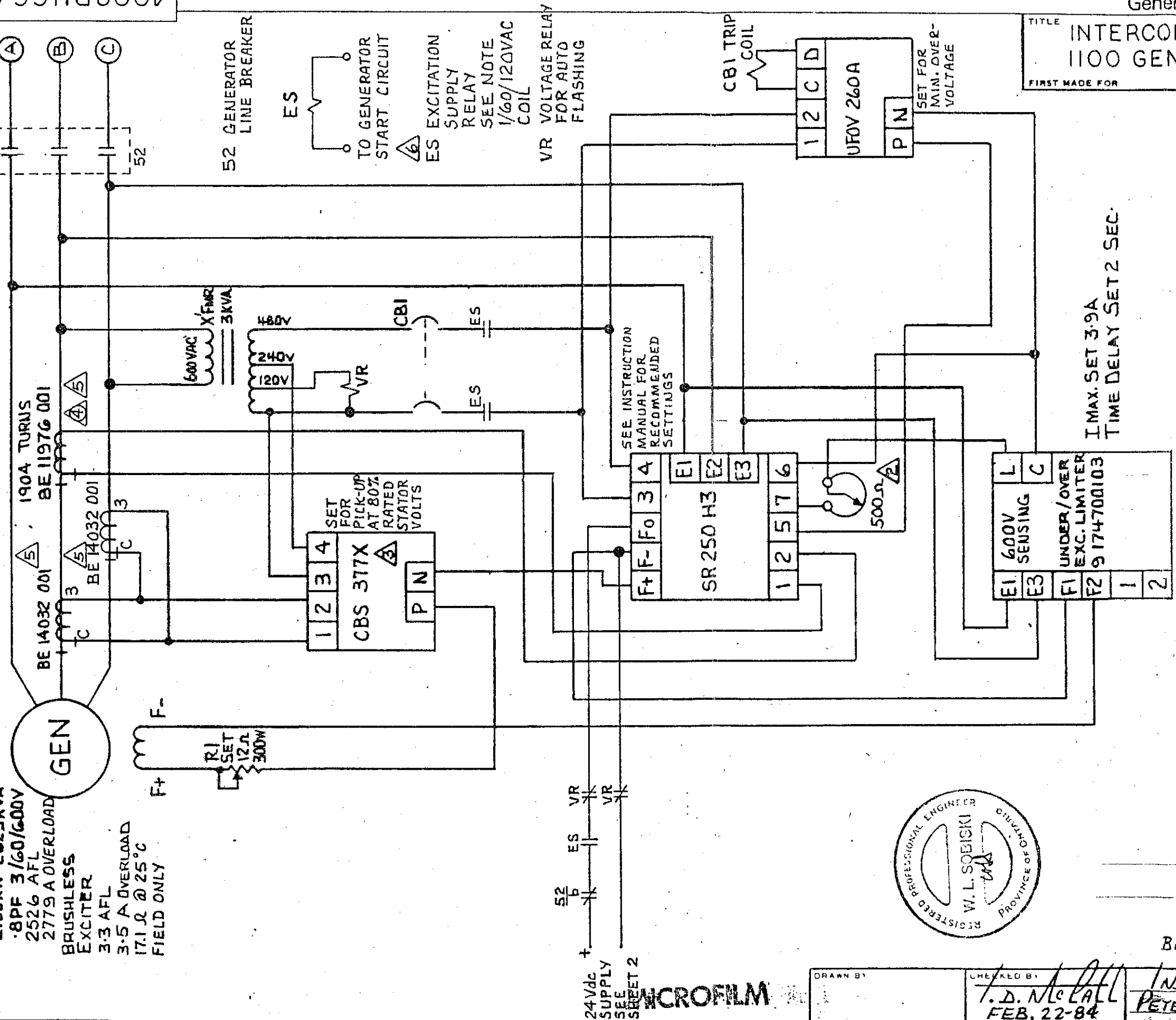
GEN 1904 TURNS
BE 11976 001
BE 14032 001
BE 14032 001

4002B1166AT

DEVICE 52 SUPPLIED
BY OTHERS

SH-1 OF 2

PW 2356-F



Canadian
General Electric

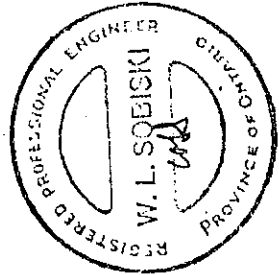
4002B1166AT

TITLE
INTERCONNECT DIAGRAM FOR NAVAIDS
1100 GEN'R EXCITATION SYSTEM
FIRST MADE FOR
139482

I MAX. SET 3.9A
TIME DELAY SET 2 SEC.

NOTES

- 1 UNLESS OTHERWISE NOTED AS SHOWN, EQUIPMENT IS SUPPLIED AS LOOSE ITEM FOR MOUNTING AND WIRING BY OTHERS.
- 2 SUPPLIED AS LOOSE ITEM FROM REG. FOR SEPERATE MOUNTING.
- 3 CBS OUTPUT LIMIT SET FOR 144Vdc ON SHORT CIRCUIT CONDITIONS
- 4 CURRENT COMPENSATION (PARALL- ING) SHOWN THIS SHEET FOR SINGLE GENERATOR ONLY. FOR MULTI GENERATOR CONNECTION (CRDSS CURRENT COMPENSATION) SEE SHT. 2 THIS DWG.
- 5 PHASE RELATIONSHIP & C/T POLAR- ITY MUST BE OBSERVED. PHASE ROTATION IS NOT CRITICAL TO CIRCUIT OPERATION.
- 6 ES RELAY COIL TO BE WIRED INTO START CIRCUIT SUCH THAT RELAY OPENS BELOW 750 RPM.



BASLER REF. DWG. 98-0936 REV. A

DRAWN BY T. D. McLELL FEB. 22-84	CHECKED BY IND. APP. DIV. PETERBOROUGH PLANT	4002B1166AT SH-1 OF 2
--	--	--------------------------

1	MAR. 15-84	CUSTOMER	T.M.
2	JUN. 25-84	ADD NOTES	4.5.6
3	JUN. 30-84	BE 11976 CONNECTED TO SR 250 H3 TERM 1 & 2 WAS 9174700100 TO LIMITER TERM 1 & 2 WAS 9174700100 1 MIN. SET 1.7A ON LIMITER 2-2.7A	17
4	OCT. 19-84	TEST CHANGES ADDED	14
5	2-85	WAS 1.7A-2.7A	14

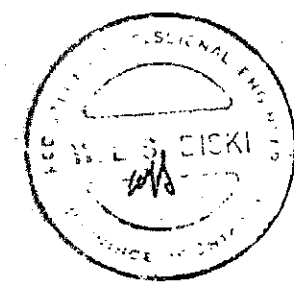
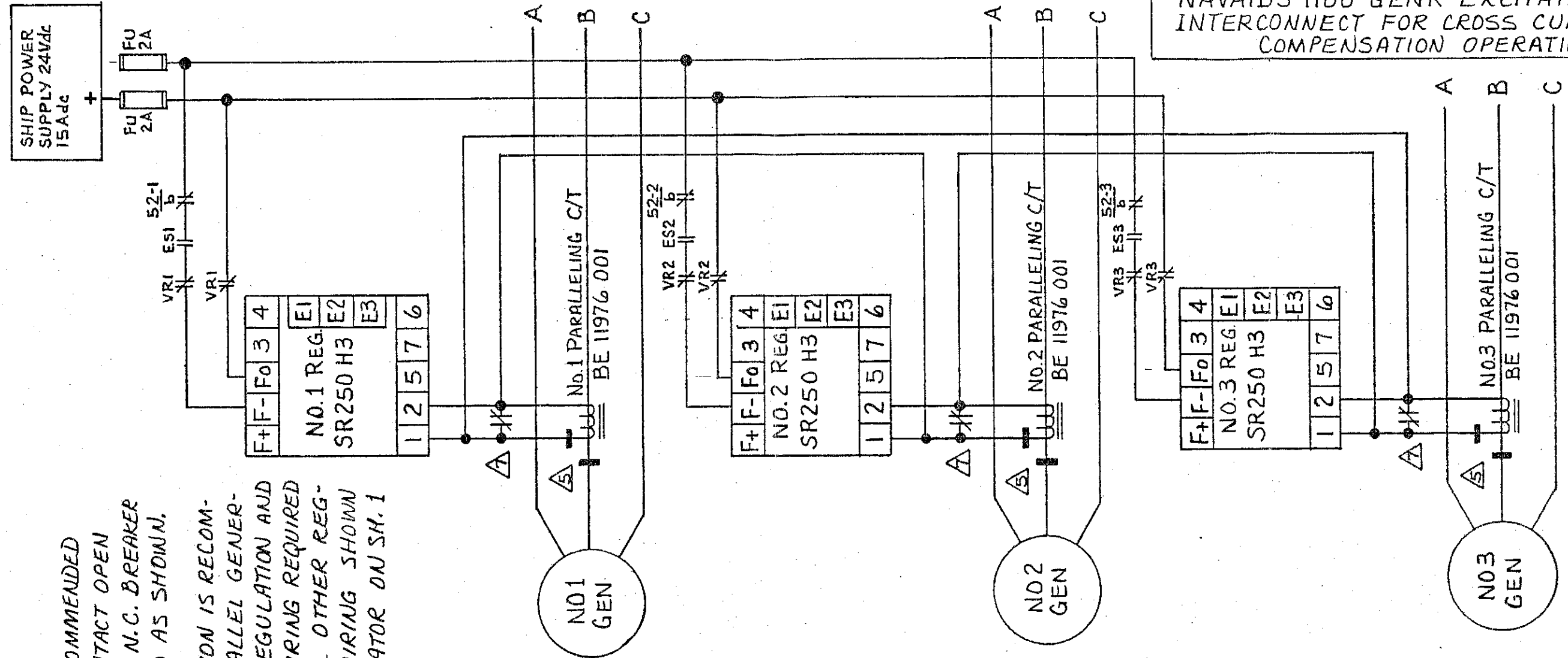
4002B1166AT SH.2F

Canadian General Electric 4002B1166AT SH.2F

NAVAIDS 1100 GEN'R EXCITATION SYSTEM
INTERCONNECT FOR CROSS CURRENT
COMPENSATION OPERATION 139482

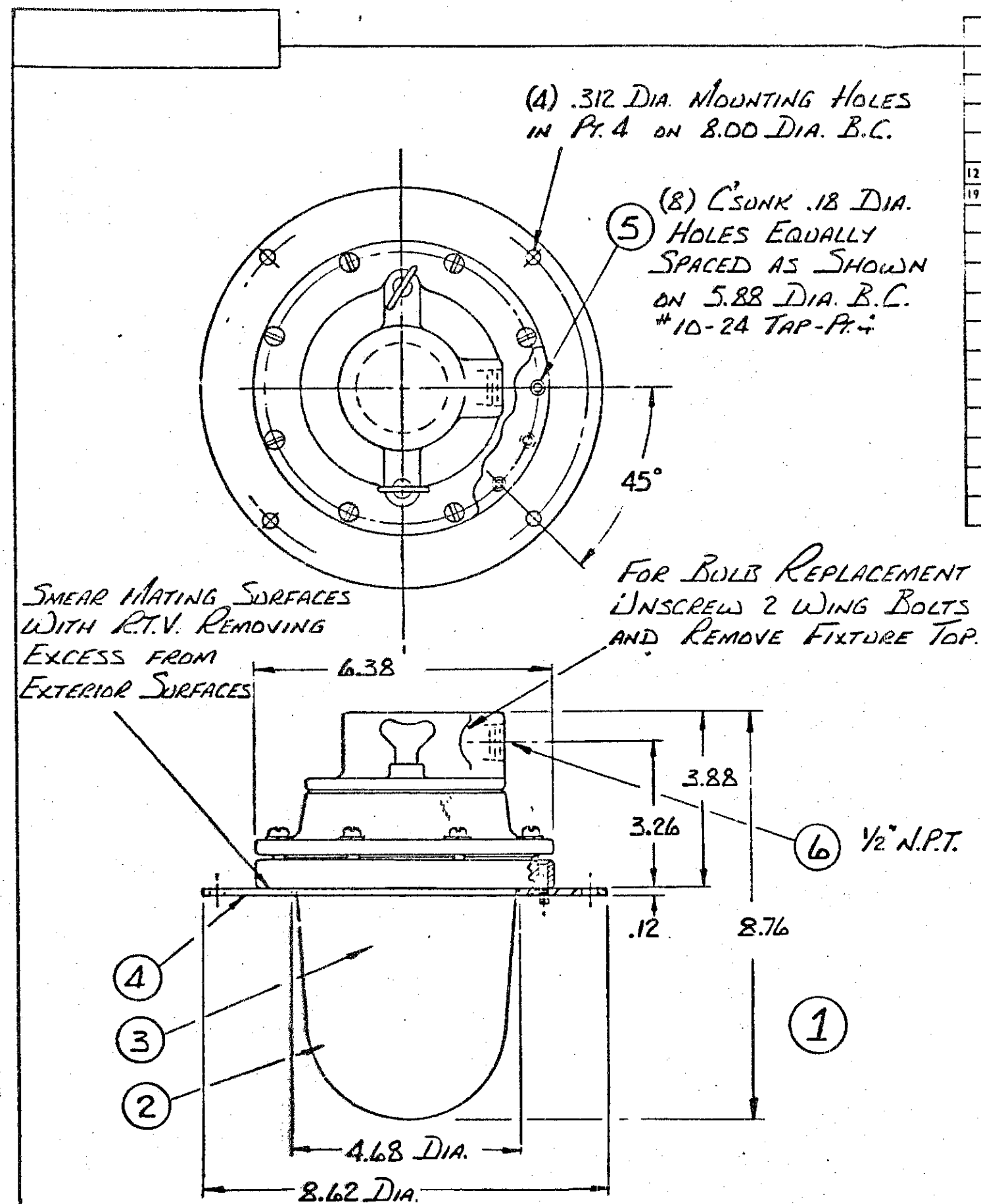
NOTES

- ⚠ C/T SHORTING CONTACT RECOMMENDED (NOT SUPPLIED BY CGE). CONTACT OPEN WHEN GENERATOR IN USE. N.C. BREAKER CONTACT IS RECOMMENDED AS SHOWN.
- ⚠ CROSS CURRENT COMPENSATION IS RECOMMENDED BY CGE FOR PARALLEL GENERATOR OPERATION. INTER-REGULATION AND CURRENT TRANSFORMER WIRING REQUIRED IS SHOWN THIS SHEET. ALL OTHER REGULATOR AND ACCESSORY WIRING SHOWN IS TYPICAL FOR ONE GENERATOR ON SH.1



DRAWN BY	CHECKED BY <i>T. D. McCall</i> JUNE 22-84	IND. APP. DIV. PETERBOROUGH PLANT	4002B1166AT SH.2F
----------	---	--------------------------------------	----------------------

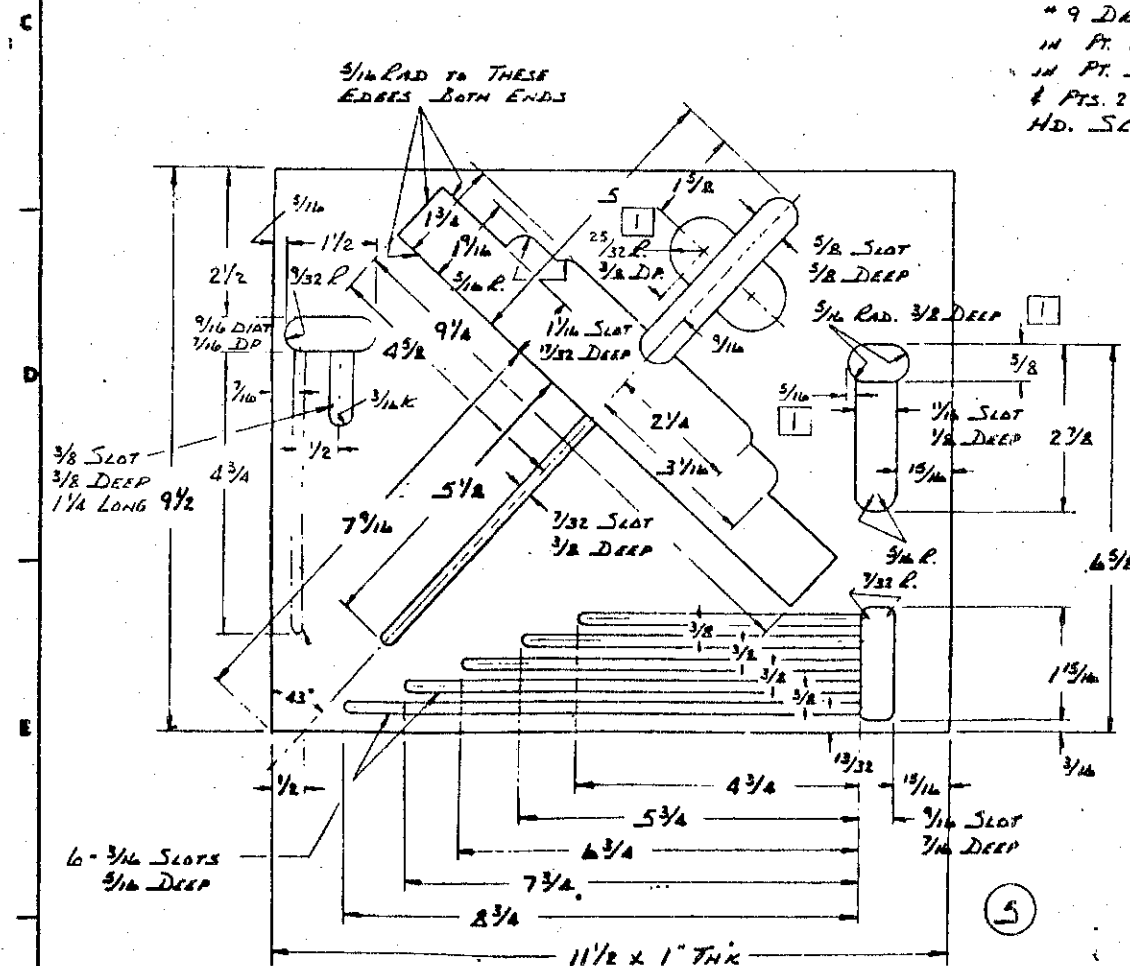
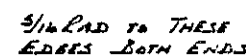
U DEC. 2-85 ADD AUTO-FLASHING CIRCUIT	C	924	PRINTS TO
--	---	-----	-----------



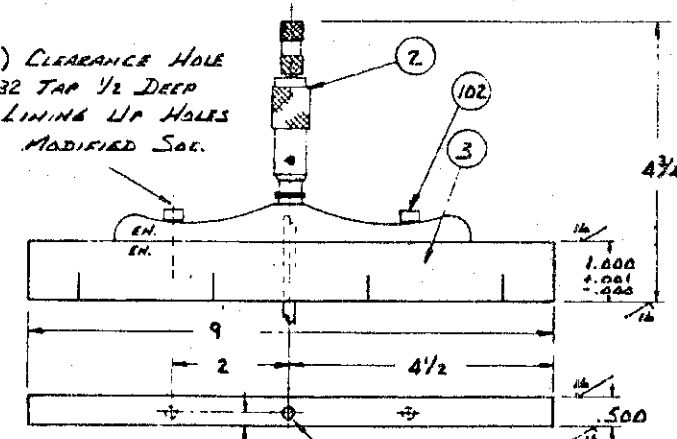
				CANADIAN GENERAL ELECTRIC COMPANY LIMITED				CONT. ON SHT. - SHT. NO. 1								
				I.A.D. - DC				DRAWING 11								
				PETERBOROUGH PLANT				4002B1427HM								
				TITLE												
				LIGHT FIXTURE ASM. (WATERTIGHT)												
				FIRST MADE FOR NICE 150M-14-7480HP MARINE MTR.				P.C.F. EN139224								
12	GROUP	15	1	12	15	17	19	21	32	36	54	55	63	68	77	78
19	QUANTITY	27	28	31	42	45	47	48	75							
		1	PT		DRAWING	P. NO	LEV		NAME AND DESCRIPTION				STK ORIG			
		X	1		THIS DWG	G001			FIXTURE ASM.							
		1	2			P002			LIGHT FIXTURE - COARSE-HINDS CAT #V160							
		1	3			P003			LAMP - 50W. 120V A.C. CAT #5A/RS							
		1	4			P004			MOUNTG FLT. - 7028A3A .12X.9.60X.9.60							
		8	5			P005			MACH. SCRS. - COILS FLT. HD. #10-24X1.00LG.							
		1	6		THIS DWG	P006			CONNECTOR - 1/2" T&B CAT #2524 EQUIVALENT							

FIRST MADE FOR THE U.S. AIR FORCE

1. ASSY
13. RADIUS ALL OUTSIDE EDGES.
SAND INSIDE & OUTSIDE SMOOTH
TO REMOVE SPLINTERS & GIVE A
GOOD APPEARANCE.
3 COATS OF WHITE SHELAC, RUBBING
BETWEEN COATS.



* 9 DR. (196 DIA) CLEARANCE HOLE
IN PT. 2 & * 10-32 TAP 1/2 DEEP
IN PT. 3 AFTER LINING UP HOLES
& PTS. 2 AND 3 FOR MODIFIED SOL.
HD. SCREENS.



DRILL CLEARANCE HOLE IN
BAR (PT. 3) FOR PT. 2 MEASURING
RODS SUPPLIED.

PT. 2 TO BE ORDERED FROM L.S. STAGGITT CO. NO. 445D-6RL WITH RATCHET,
WRENCH & 6 LADS WITH 0" TO 6" DEPTH RANGE.
BAR TO BE MADE FROM TOOL STL., HARDENED & GROUND WITH EN NUMBERS
MATCH-MARKED ON PT. 2 & 3 BY ETCHING.
INSPECTION DEPT. TO MARK LINES ON PT. 3 BY ETCHING WHEN BEARING
DEPTHS ARE TAKEN & RECORDED WITH ENGINEERING (TO MATCH INSP^H HOLE DIA).
QUALITY CONTROL TO RE-CALIBRATE DEPTH GAUGES TO SUIT BAR DIMENSIONS.

DESCRIPTION OF GROUPS		REVISIONS	PRINTS
		1 [unclear] [unclear]	C
		2 [unclear] [unclear]	6666
		3 [unclear] [unclear]	[unclear] [unclear] 910
			REP.

DRAWN BY:

G. WILLIS

CHECKED BY:

Sus Willis

MOTOR & GEN^E. DIV.
PETERBORG CAN. WORKS

499C 696 PP

4003C1109AE

CANADIAN GENERAL ELECTRIC

PROG	PARTS	DRAWING
79 80	LIST	11
205	FOR	4003C1109AE

I. A. D.

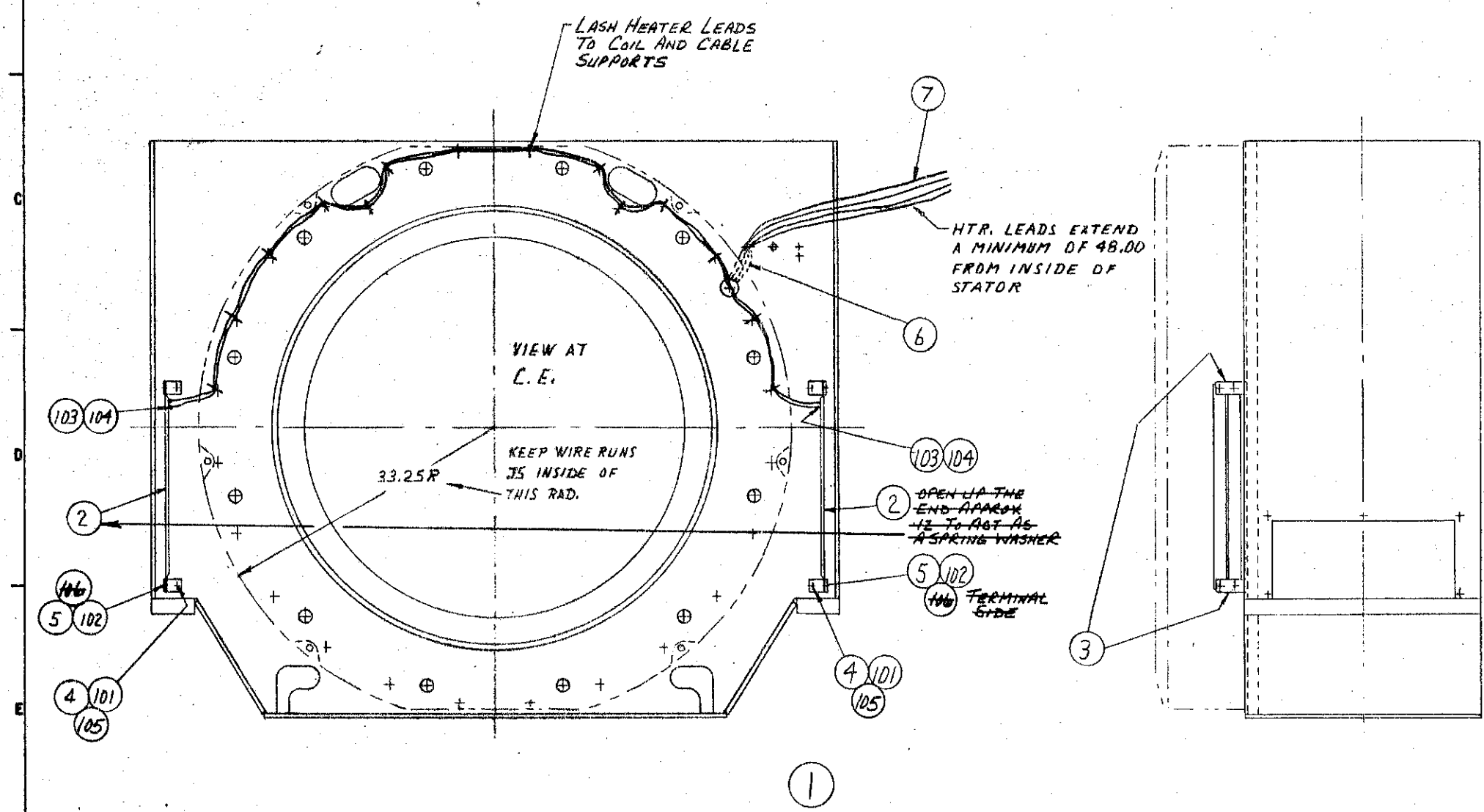
PETERBOROUGH PLANT

SPACE HEATER ASSEMBLY

FIRST MADE FOR EN-139528

12	GROUP	15	1	12	15	17	19	21	32	36	54	55	63	64	77	78
19	QUANTITY	27	28	31	42	45	47	48	75							
	1	PT		DRAWING	NO	LEV			NAME AND DESCRIPTION				STK	ORIG		
	A	1		THIS DWG	G001				ASSEMBLY							
	4	2		4001A1174GK	P001				HEATERS							
	4	3		4001A1174JE	T001				HEATER SUPPORT							
	4	4		THIS DWG	P004				LOCWELL CAPSCREW (SOC. HD. 3/8 - 16x1.00)							
	8	5		THIS DWG	P005				LOCWELL CAPSCREW (SOC. HD. 1/4 - 20x1.50)							
	1	6		4001A1101HH	P007				CABLE WRAPPER							
	1	7		4001A1101GT	P100				CABLE							
	4	105		THIS DWG	P105				NUT HEX HD JAM 1/4-20							
	8	104		THIS DWG	P104				TERML AIRCRAFT MARINE CAT 34488							
	4	103		THIS DWG	P103				LOCKWASHER STL INT TOOTH FOR #10 SCREW							
	8	102		THIS DWG	P102				WASHER STD STL 1/4							
	4	101		THIS DWG	P101				WASHER STD STL 3/8							
	-	106		THIS DWG	P106				WASHER STD STL 1/2							

SCHEMATIC FOR EACH SET OF HEATERS



REVISIONS	PRINTS TO
1 JULY 16-84 ADD PT. 105 & 6 ADDED NOTES FOR LEADS & HTRS	K
2 AUG 20-84 DELETE PT. 106 & NOTE FOR PT. 2	SC

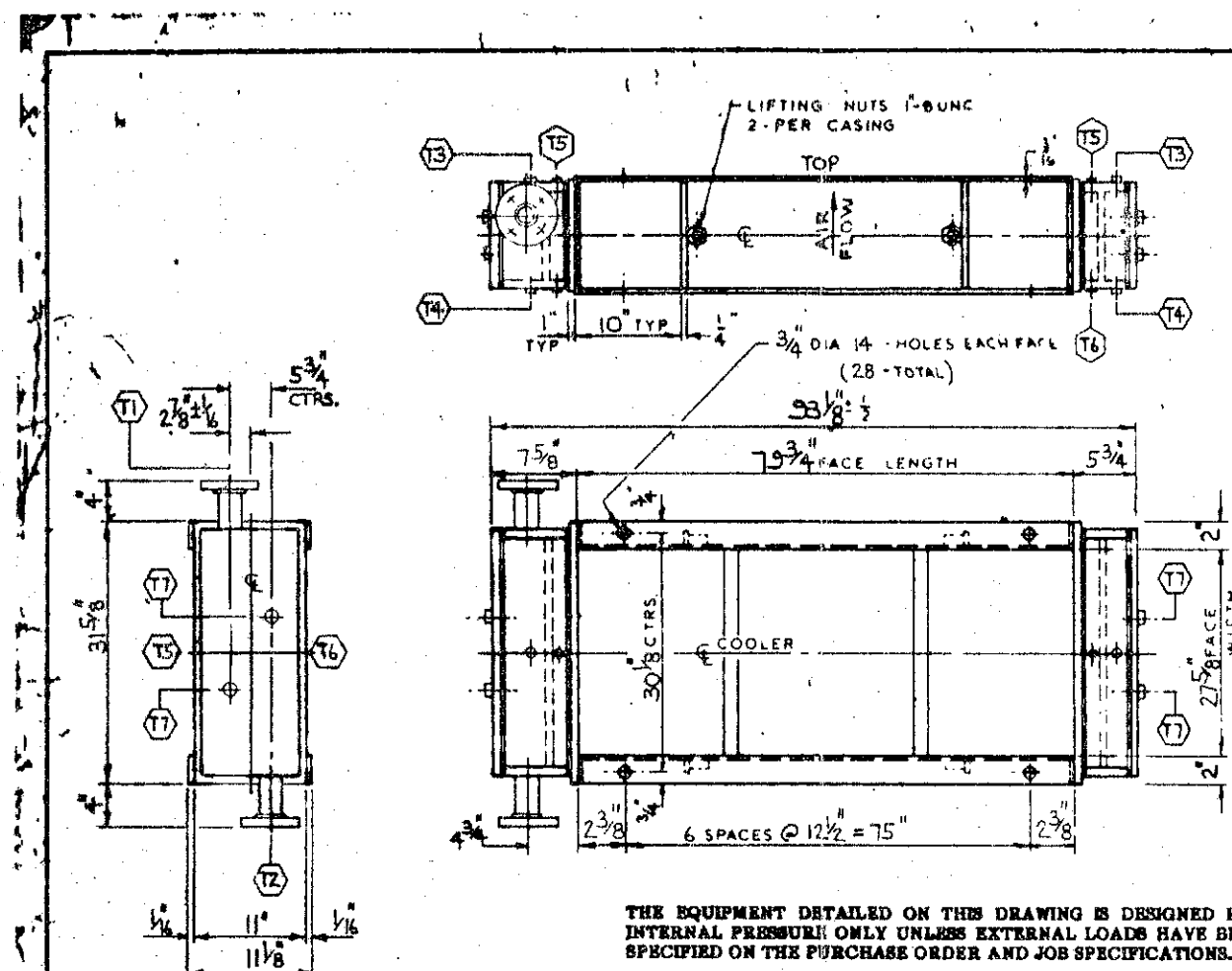
DRAWN BY R. BROUGH	CHECKED BY Steve Cook June 26-89	4003C1109 AE
-----------------------	--	--------------

REV. NO.	4003C1119LD
-------------	-------------

TITLE	COOLER
-------	--------

FIRST MADE FOR NAVAIDS 1100 GENERATORS

EN-139528



THE EQUIPMENT DETAILED ON THIS DRAWING IS DESIGNED FOR
INTERNAL PRESSURE ONLY UNLESS EXTERNAL LOADS HAVE BEEN
SPECIFIED ON THE PURCHASE ORDER AND JOB SPECIFICATIONS.

NOTE: CANADIAN COAST GUARD & LLOYDS INSPECTION
REQUIRED

TECHNICAL SPECIFICATION	
RATING	90 KW
AIR FLOW 9000 ACFM	WATER FLOW: 40 IGPM
AIR TEMP IN 64.3 °C.	WATER TEMP IN 35 °C.
AIR TEMP OUT 45 °C.	WATER TEMP OUT 42.2 °C.
AIR PRESS DROP 0.47 IN.W.G.	WATER PRESS DROP 257 PSIG
	WATER VELOCITY 3.77 FT/S
EXCESS SURFACE 18 %	

UNIFIN SERIAL N. 4034-84A-1 TO 18	
SIZE 155007954	TYPE RCP-NR-LD
DRY WEIGHT 1400 LBS. APPROX	FLOODED WT 1500 LBS. APPROX
MOUNTING ARRG: HORIZONTAL TUBES, AIR VERTICALLY UP	

MATERIAL SPECIFICATION

TUBES $5/8" \phi$ X $0.049"$ WL. $50/10 \phi$ NI LINER TRI-METAL
L/D CW 11-INT. ALUM. F.P.I.

FLUE SHEETS AIRSIDE-CARBON STEEL WATERSIDE- $50/10 \phi$ NI

HEATERS $50/10 \phi$ NI

COVERS $50/10 \phi$ NI


GASKETS GARLOCK 7021

PAINT	EXTERIOR-ALL CARBON STEEL.
	ONE COAT ZINC CHROMATE PRIMER.

	NR	SIZE & RATING	FLUID	WATER
INLET	T1	1 1/2" - 150# ANSI A 16	DESIGN PRESS	75 PSIG
OUTLET	T2	1 1/2" - 150# ANSI A 16	TEST PRESS	113 PSIG
VENT	T3	3/4" NPT BRASS PLUG	DESIGN TEMP	200°F
DRAIN	T4	1/2" NPT BRASS PLUG		
VENT	T5	1/2" NPT SCREENED	ANODE SUPPORT PLUG	T7
1/2" DRAIN	T6	1/2" NPT BRASS PLUG		3/4" NPT BRASS PLUG

ORDER N. 4034-84A
MER CANADIAN GENERAL ELECTRIC PETERBOROUGH
Q.M.P.S. ORDER N. 9201-505-19479 SPEC 31-047D-83 SKATES IA

REF. NO. 44-38861-101
REFERENCE DRAWINGS
GEN ASSY 4112035
HEALEY GASKET RO-1019P12

	CERTIFIED FOR CONSTRUCTION MAR - 1 1984	DRAWN BY P. MYNICK CHECKED BY [signature] APPROVED BY [signature] PREP. NO.
A DIVISION OF Unifin PRODUCTS LIMITED	KEEP IT UNIFIN	DATE JAN. 16 / 84 SCALE N.T.S.
TITLE OUTLINE ELECTRICAL APPARATUS AIR COOLER		2429404

1	T3 & T4 WERE ON COVERPLATES & REVERSED TO T2	FM	FEA
NO.	REVISION	BY	DAT

DIMENSION TOLERANCES
UNLESS OTHERWISE SPECIFIED

TITLE OUTLINE - ELECTRICAL APPARATUS AIR COOLER	NO 2429404
---	---------------

REVISIONS	PRINTS TO
	C
	4003C 1016 HS

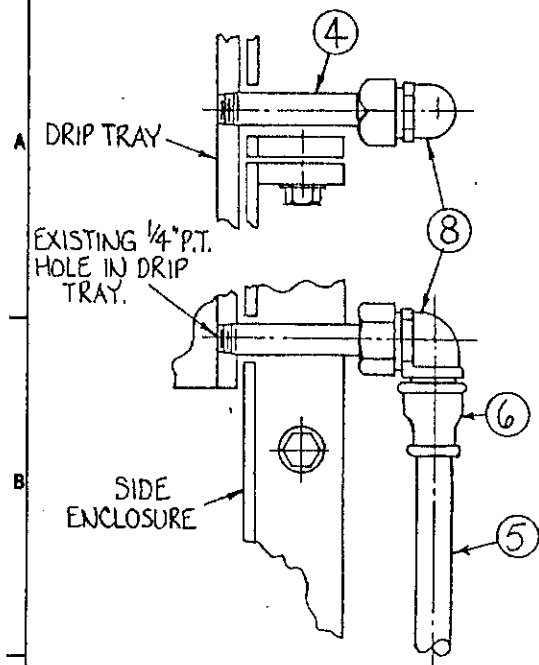
M761113E007

Canadian
General Electric
L.A.D.
PETERBOROUGH PLANT

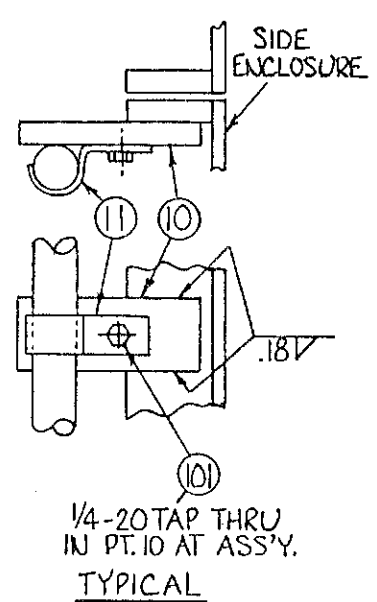
CONT. ON SHT. SHT. NO. 11
DRAWING 4003C1119LW

CONDENSATION DRAIN

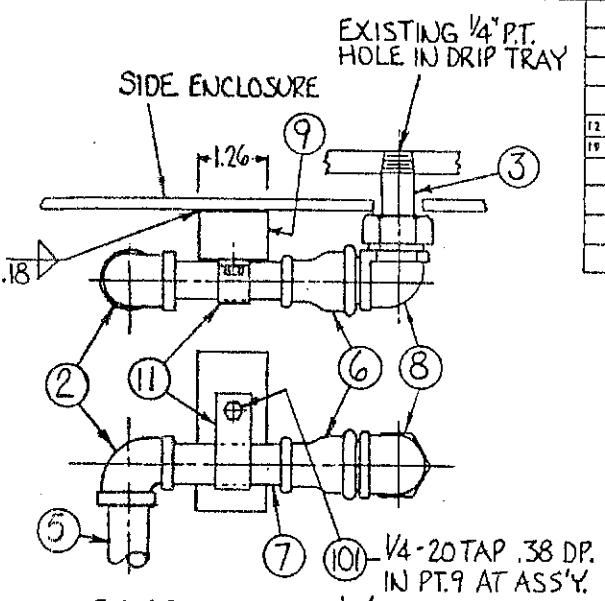
12	GROUP	13	14	15	16	17	18	19	20	21	22	23	24	25	26	27	28
19	QUANTITY	27	28	31	42	45	47	48									
		1	PT	DRAWING	NO	LEV											
		X	1	THIS DWG.	P001												
		2	2	0215A9920JW	P003												
		2	3	THIS DWG.	P003												
		2	4		P004												
		4	5		P005												
		4	6		P006												
		2	7	THIS DWG.	P007												
		4	8	2250													
		2	9	THIS DWG.	P009												
		4	10	THIS DWG.	P010												
		6	11	1210													
		3	101	THIS DWG.	P101												



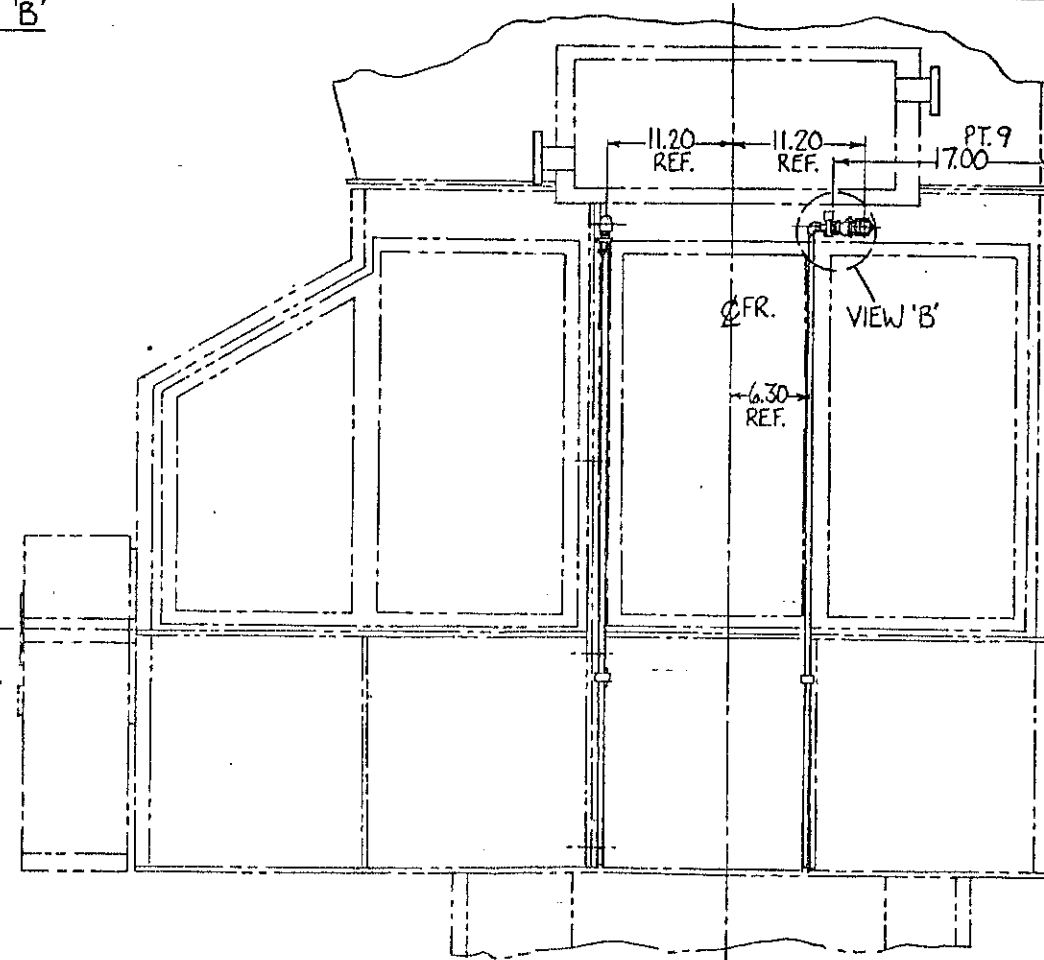
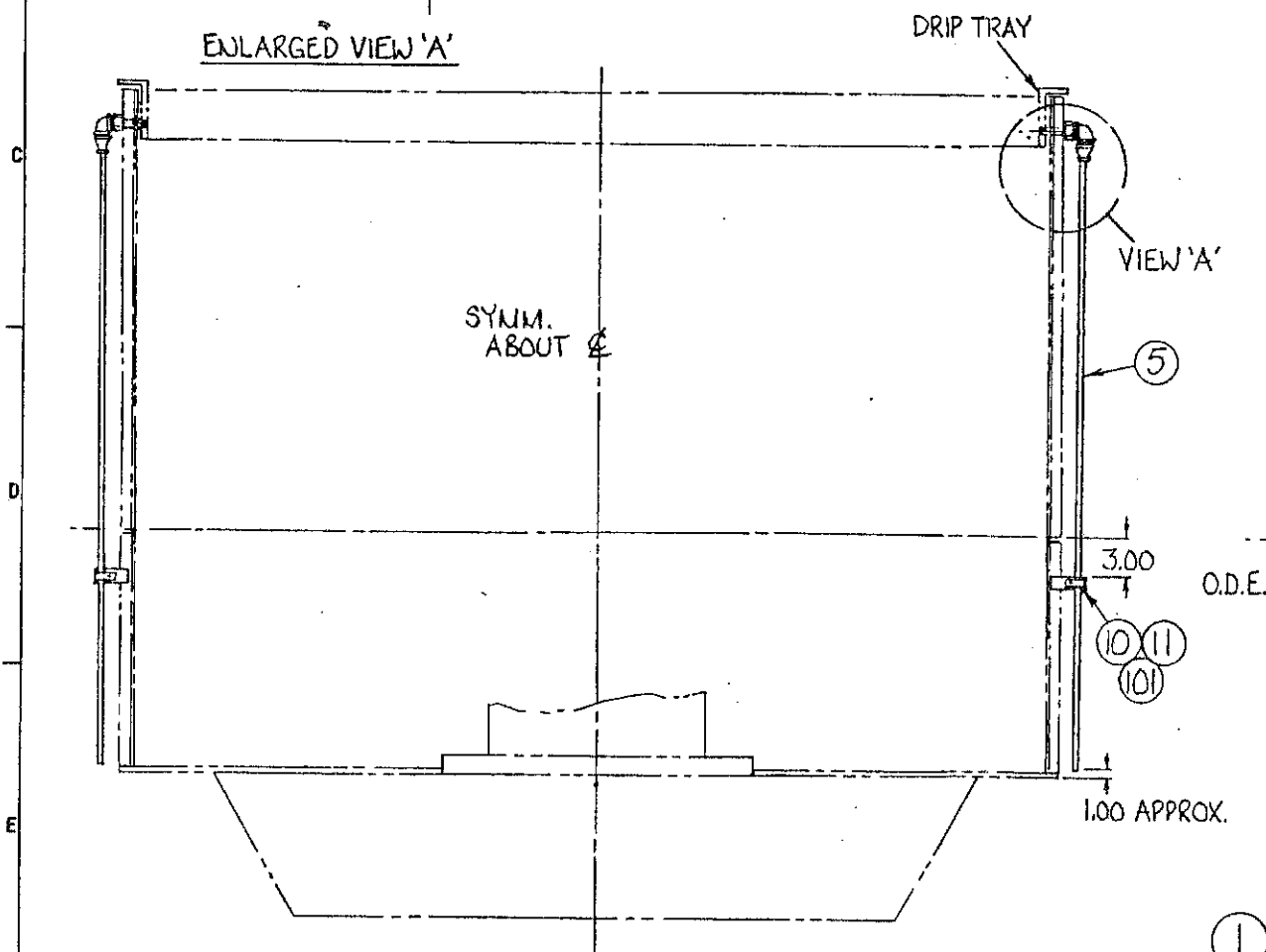
ENLARGED VIEW 'A'



1/4-20 TAP THRU IN PT. 10 AT ASS'Y.
TYPICAL



ENLARGED VIEW 'B'



NOTE:
① PTS. 3, 4 AND 5 THREAD ONE END.
PT. 7 THREAD BOTH ENDS.

REVISIONS
1 AUG. 22-84 ALL PIPING & FITTINGS WERE STL. JR
2 NOV. 12-84 PT. 9 WAS 1.25 X 1.25 X 2.76 JR

REV. NO.	PRINTS TO
1	C
2	
3	
4	
5	
6	
7	
8	
9	
10	
11	

DRAWN BY J. RAY
CHECKED BY J. RAY
JUNE 20/84
4003C1119LW

4003C1119MC

2

3

4

5

Canadian
General Electric

4003C1119MC

MACHINE ASSEMBLY

FIRST MADE FOR NAVALS

EN-139528-33

STANDARD HARDWARE				NAME	DESCRIPTION
4	4	4	101	CAPSCREW	HEX. HD. STL. 1"-8 x 4.50
		4	102	CAPSCREW	HEX. HD. STL. 1"-8 x 3.00
4	4		103	CAPSCREW	HEX. HD. STL. 1"-8 x 2.50
		4	104	JAM NUT	HEX. STL. 1"-8
		8	105	JAM NUT	HEX. STL. 1/4"-8
		4	106	NUT	HEX. STL. STD. 1"-8
		8	107	NUT	HEX. STL. STD. 1/4"-8

Q4	6.3	6.2	6.1	PT.	NAME	DESCRIPTION
			X	1	ASSEMBLY	BEARING PEDESTAL TO BASE
		X		2	ASSEMBLY	EXCITER SUPPORT TO BASE
	X			3	ASSEMBLY	STATOR FRAME TO BASE
X				4	ASSEMBLY	EXCITER TO SUPPORT (NOT SHOWN)
			2	5	FITTED STUD	4001A1176 CF GR.1
		2		6	FITTED STUD	4001A1176 CM PT.1
	4			7	FITTED STUD	4001A1176 CM PT.2
		3/16		8	SHIM	131B9552 PT.1
			4	9	INSUL. SHIM ASM.	4001A1128 CA (2 OF PT.10 AND 1 OF PT.8 MAKES 1 ASM)
			8	10	INSULATED SHIM	131B9552 PT.2
	3/16			11	SHIM	131B9552 PT.7
4	4	4		12	WASHER	153A7925 PT.1
			4	13	INSUL. WASHER	4001A1128 BM PT.4
		2		14	INSUL. WASHER	4001A1128 BM PT.7
	4	4		15	WASHER	4001A1102 TK PT.2
	8			16	WASHER	4001A1102 TK PT.4
		4		17	BOLT & TUBE ASM.	4001A1128 BM (1 OF PT.20 AND 1 OF PT.10 MAKES 1 ASM)
2				18	DOWEL	123A6445 PT.4
1				19	DOWEL KIT	115L938 GR.1
		4		20	INSUL. TUBING	4001A1128 BL PT.5

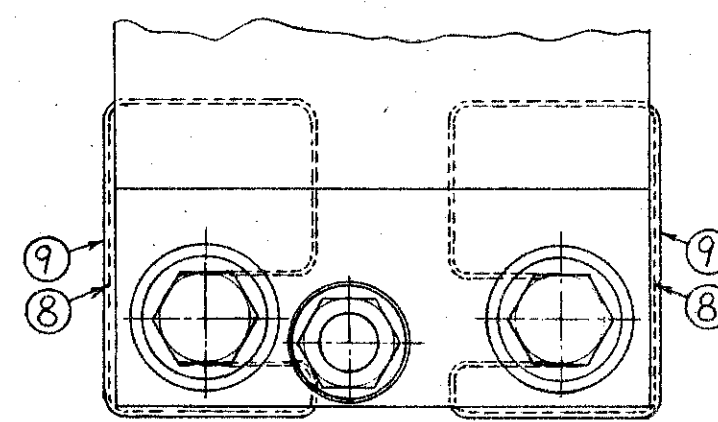
A

B

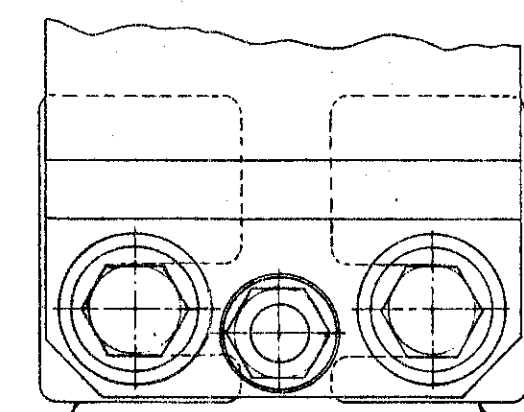
C

D

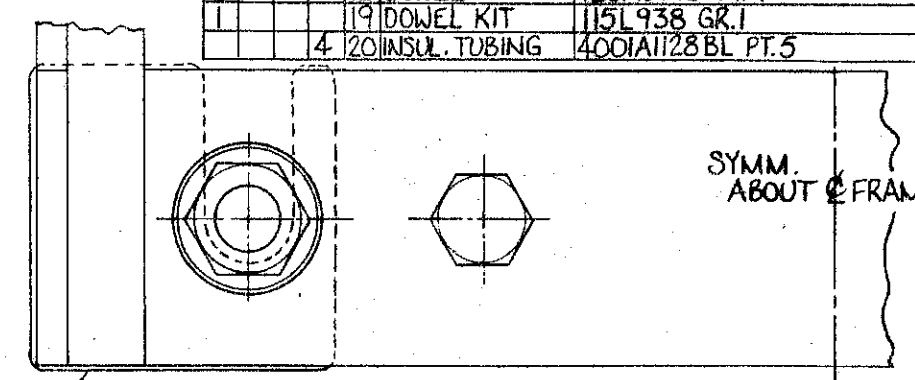
E



PLAN VIEW

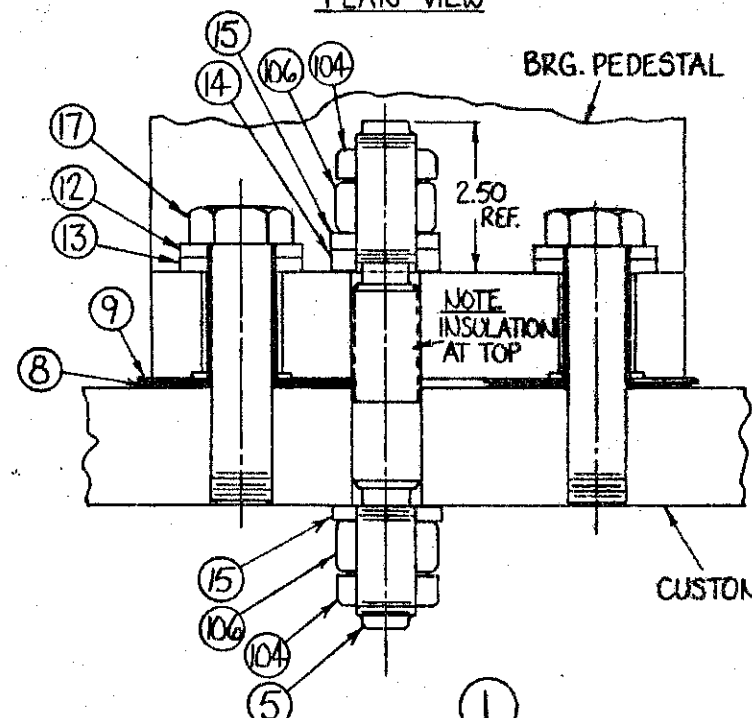


PLAN VIEW

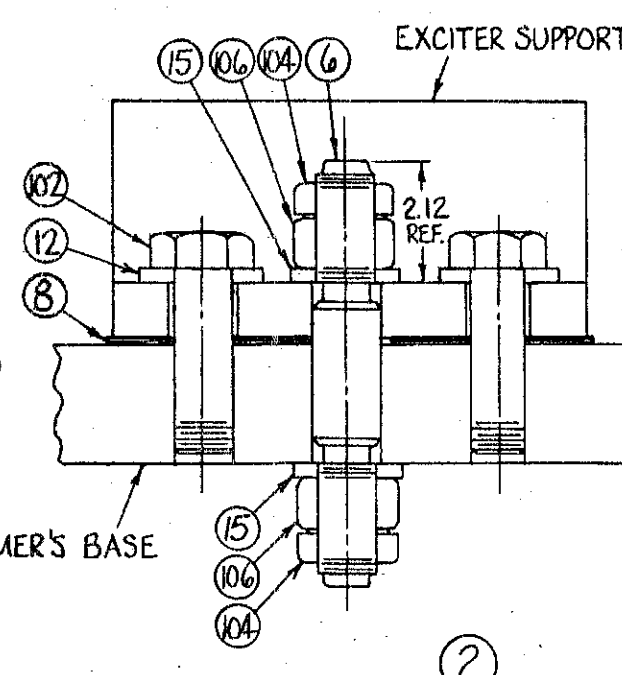


PLAN VIEW

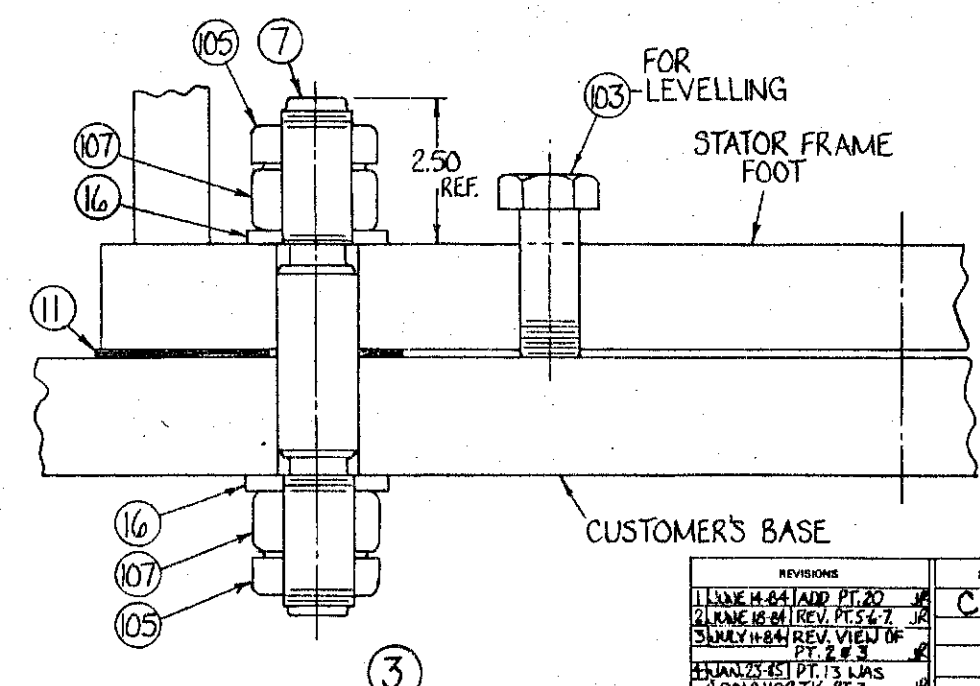
SYMM.
ABOUT FRAME



1



2



3

REVISIONS		PRINTS TO
1	JUNE 11-64 ADD PT. 20	JR
2	JUNE 18-64 REV. PT. 5 & 7	JR
3	JULY 11-64 REV. VIEW OF PT. 2 & 3	JR
4	JAN 23-65 PT. 13 L.A.S.	JR
5	4001A1102 TK PT. 3	JR

DRAWN BY
J. RAY

CHECKED BY
J. RAY

I. A. D.
PETERBOROUGH PLANT

4003C1119MC

4004D1001NW

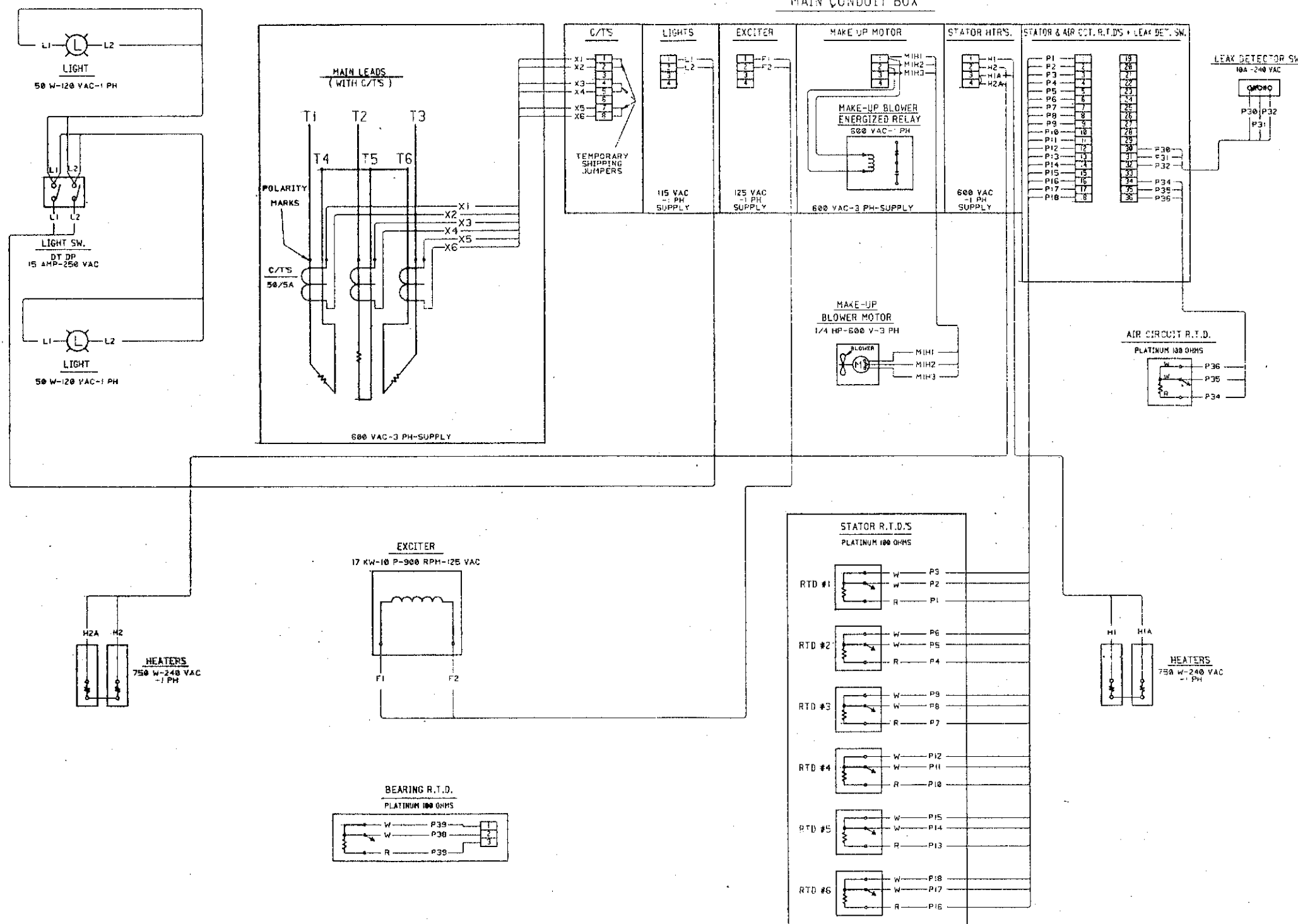
CANADIAN GENERAL ELECTRIC
COMPANY LIMITED

4004D1001NW

GENERATOR SCHEMATIC DIAGRAM

FIRST MADE FOR EN-139828

MAIN CONDUIT BOX



REVISIONS	REMARKS

DRAWN BY: S. COOK
 CHECKED BY: S. COOK
 DATE: June 29-89
 I.A.D. PETERBORO
 4004D1001NW

										Canadian General Electric IAD PETERBOROUGH PLANT										PROD 79 80 PARTS LIST FOR		CONT. ON SHT. 2 SHT. NO. 1 DRAWING 11 4004D1009 DA EN139528.																				
16 LEVEL 17 63 STOCK 67 68 ORIGIN 72 77 78 STD/SPC										19 TITLE ROTOR ASSEMBLY FIRST MADE FOR ATI-B-2100KW-900RPM-600V F.C.F.																																
12 GROUP		15		1		12 15		17 19		21		32		36		54 55		63		68		77 78																				
19 QUANTITY		27 28		31		42 45		47 48								75						77																				
		PT		DRAWING		P G NO		LEV		NAME AND DESCRIPTION										STK		ORIG																				
		X	1		THIS DWG	P	001			ASSEMBLY																																
		X	2		SEE EN	-				FAN(CONN ENDS)																																
		X	3		SEE EN	-				FAN(OPP CONN ENDS)																																
		X	4		SEE EN	-				COIL BRACKET																																
		7	5		THIS DWG	-				SERIES CONN(CU BQH1B1A3.2(112x2.00x13.00)																																
		7	6		0169A7050BD	P	480			BUSHING																																
		7	7		0122A2796	P	065			CLAMP																																
		2	8		0846A0193AL	P	001			CLAMP																																
		2	9		4001A1159GE	P	010			CLAMP																																
		1	10		0846A0193AK	P	001			CLAMP																																
		1	11		0846A0193AN	P	006			CLAMP																																
		1	12		0169A7044 AJ	P	200			INSULATION																																
		1	13		THIS DWG	P	013			CABLE #6 DELTASIL 600V (12 FT MAKES 2)																																
		16	14		4001A1173GE	P	001			AMORTISSUER CONN PLT																																
		14	15		4001A1173GK	P	001			BALANCE WEIGHT																																
		14	16		4001A1173GK	P	002			BALANCE WEIGHT																																
		9	17		4001A1651AB	P	136			LOCKING PLATE																																
		1	18		4001A1100JC	P	001			CABLE PROTECTION																																
		32	19		4001A1173GH	P	001			AMORT STRAP																																
		55	20		0197A7239	P	002			FLEXLOC NUT (1/4)																																
		16	21		4001A1651AD	P	120			LOCKING PLT																																
		X	22		ED 1126	-				BALANCE																																
		32	23		4002B1138AA	G	030			KEYS (POLE)																																
		1	24		4001A1173GM	P	001			OIL DISC																																
GROUP DESCRIPTION										REVISION										PRINTS TO																						
										1 FEB 15-84 ADDED PT 24 BT. 2 JUNE 7-84 RE: PT 23 DWG GR-NO WAS GR-028EE141447 WDN 3 DEC. 14-84 QTY. P.T. 14 & 15 WAS 7. EEI. 42544 R.H.										REF. 4004D1009CN																						
										DRAWN BY B. THOMPSON.										CHECKED BY W.D. Wright										4004D1009 DA												
										PRELIM.										Sub 6/84																						
										CONT. ON SHT. 2 SHT. NO. 1																																

PETERBOROUGH PLANT

DRAWING

PARTS LIST FOR

4004D1009

DA

EN 139528

19	TITLE
----	-------

ROTOR ASSEMBLY

78 STD/SPC

FIRST MADE FOR AT1-8-2100 KW-900 RPM-600V

F.C.F.

[illegible][illegible]

PT

DRAWING

 $\frac{P}{c}$

NO

LEY

[illegible]

STK	ORIG
-----	------

3	109	THIS DWG	P109	CAPSCREW, LOCWELL SOCHD STL 1/2-13 x 1.5dLG	2
---	-----	----------	------	---	---

[illegible]

48	107	THIS DWG	P. 107	CAPSCREW (HEX HD STL 1/4-20x2.00LG)
----	-----	----------	--------	-------------------------------------

7	106	THIS DWG	P.106	CAPSCREW (HEX HD STL 1/4-20x1.00LG)					
---	-----	----------	-------	-------------------------------------	--	--	--	--	--

AR 105	THIS DWG	P 105	CAPSCREW (HEX HD STL 5/8" - 11 x LEN AS REQUIRED)
--------	----------	-------	---

AR	104	THIS DWG	P:104	LOCKWASHER (STD.STL 5/8)
----	-----	----------	-------	--------------------------

9	103	THIS DWG	P:103	CAPSCREW (HEX: HD STL 5/16-18x1.26LG)
---	-----	----------	-------	---------------------------------------

16	102	THIS DWG	P:102	LOCKWASHER (STD STL 1/2)
----	-----	----------	-------	--------------------------

16	101	THIS DWG	P 101	CAPSCREW (HEX HD STL 1/2-13 x 3.00 LG)
----	-----	----------	-------	--

GROUP DESCRIPTION

REVISION

PRINTS TO

1	FEB 15-84	ADDED PT 109, BT
2	APR 10-84	PT 09 WAS 3/8-16 x 1.50 LG

REF.
4004N/009CW

DRAWN BY B THOMPSON

CHECKED BY W.D. Wright
Feb 6/84

4004D1009DA

CONT. ON SHT. - SHT. NO. 2

4004D1009DA

ROTOR ASSEMBLY

EN139518

PL ISSUED.

TEST MADE FOR RTI-B-2100KW-900RPM-600V

5/16-18TAP-80DP
2-HOLES LAYOFF
TAP AT ASSY.
TOP OF CLAMP TO
BE FLUSH WITH
SPIDER FLAT

ROTATION C.E.

LEAD POLE.

BEND CORNERS
TO LOCK BOLTS
TORQUE TO 25 FT LBS

BUTTER COIL SECTIONS AT COIL BRKTS
FOR BRKT SLIDES WITH #5142 EPOXY
AFTER ASSEM OF COIL BRKTS & SLIDES.

LEAD POLE.
LOCATE AT ASSY
SEE NOTE # 3
(APPROX AS SHOWN)

OIL DISC TO BE HEATED TO
280°C FOR PRESSING ON SHAFT

5/16-18TAP-80DP
5-HOLES LAYOFF
TAP AT ASSY.

SEE NOTE 3

EXCITER

FIT OIL RINGS TO
SHAFT +0.000-+0.002
TIGHT.

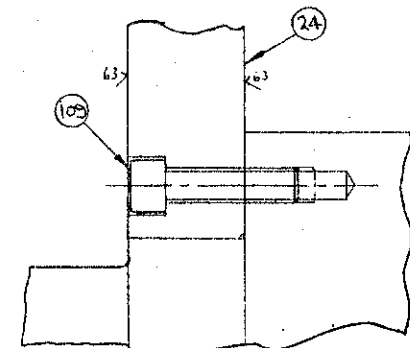
ASSEM OIL DISC PT 24
WITH CHAMFERED BORE
SIDE TIGHT UP AGAINST
SHOULDER, THEN MACH
AS SHOWN.

DETAIL C

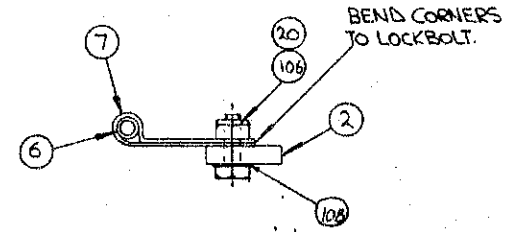
- ① ASSEMBLE PER EMI 4329 SEC 2
ROTOR WEIGHT = 13000 LBS.
ROTOR SPEED = 900 RPM.
FINISH ROTOR TO EMI 4344 SEC 1

NOTE:-

1. LOCK AMORTISSEUR BARS PER DWG K-9884536 FIG 3.
2. SERIES CONN PT 5 TO BE FORMED AT ASSEMBLY
AND BRAZED AT SAME TIME AS AMORTISSEUR
STRIPS AT ASSEMBLY.
3. INSULATION PT 12 TO BE CUT TO LENGTH AT ASSEMBLY
AND IS TO EXTEND APPROX .20 BEYOND END OF CLAMPS.
4. BALANCE PER ED 117A (EMI 4014 SEC. 4)



DETAIL C

VIEW AT ARROW X
SHOWING SERIES CONN CLAMPING

SECTION B-B

SECTION A-A

WOUND POLE.

31.50

AMORTISSEUR WINDING
(SEE NOTE #1)

PT 14 TO BE SOLDERED TO
AMORTISSEUR PLATE TABS
USING SOLDER BQ203E.

REV	DESCRIPTION	DATE	BY	CHKD
1	ISSUED FOR RTI-B-2100KW-900RPM-600V			
2	REVISION			
3	REVISION			
4	REVISION			
5	REVISION			
6	REVISION			
7	REVISION			
8	REVISION			
9	REVISION			
10	REVISION			

DRAWN BY
B. THOMPSONCHECKED BY
H. D. HIGHTDESIGNED BY
T. AD

PETERBOROUGH

4004D1009DA

			16 LEVEL 17
			63 STOCK 67
			68 ORIGIN 72
			77
			78 STD/SPC

CANADIAN GENERAL ELECTRIC
COMPANY LIMITED

I.A.D.
PETERBOROUGH PLANT

PROD	PARTS
79	80
	LIST FOR

CONT. ON SHT. 2		SHT. NO. 1
DRAWING		11
4006L1104		AP
		54

19 TITLE BEARING & PEDESTAL ASS'Y.

FIRST MADE FOR NAVAIDS

F.C.F. EN-139528

12	GROUP	15		1		12	15	17	19	21		32	36	54	55	63	68	77	78
19	QUANTITY	27	28	31		42	45	47	48							75		77	
4	3	2	1	PT	DRAWING	Pg. NO	LEV										STK	ORIG	
		A	1	1	THIS DWG.	G002													
		X		2	4004D1025HT	G001													
		X		3	4004D1025JH	G001													
				4	4004D1025HS	P001													
	A			5	THIS DWG.	G003													
				6	4004D1025HR	G001													
16				7	0131B9552	P001													
		X		8	4004D1025JJ	G001													
				9	4001A1102MS	P001													
				10	4001A1102NA	G001													
				11	4002B1142NW	G001													
				12	4002B1142PA	P001													
				13	4035														
	2			14	0153A7935	P001													
				15	4002B1071BM	P001													
				16	4002B1071BM	P003													
				17	4002B1071BM	P002													
X				18	4001A1176CF	G001													
				19	4002B1142NT	P001													
		X		20	4001A1176BS	P001													
		X		21	4002B1142PH	P001													
				22	4001A1102NG	P002													
4				23	4001A1128CA	P001													
A				24	THIS DWG.	P024													
4				25	4001A1157NN	P001													
8				26	0131B9552	P002													
	4			27	THIS DWG.	P027													

3/8-16x2.00)(COOLER)

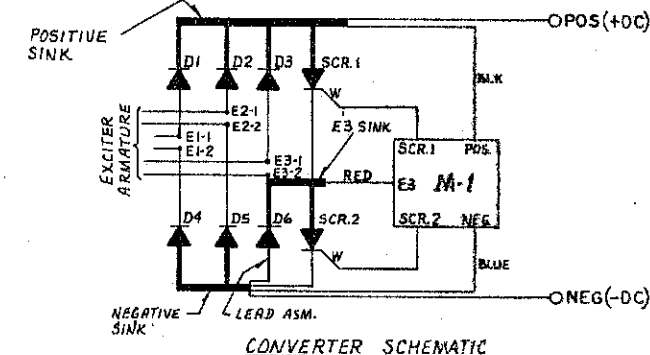
GROUP DESCRIPTION	REVISION	PRINTS TO
GR.4 FOR TEST PURPOSES ONLY.	11MAY14-84 PT.18 WAS 4001A1102LT, ADD PT. 23 ISSUED SHT. 2. 21JUNE 6-84 REV. GR.4	H4 C REF. 4006L1104AB
DRAWN BY J. RAY	CHECKED BY J. Ray	MAY 4/84 4006L1104AP CONT. ON SHT. 2 SHT. NO. 1
PRELIM.		

APP 3880F 11-68

CONVERTER ASM.

GR. 1 - 250V MODULE
GR. 2 - 500V MODULE
GR. 3 - 750V MODULE

QTY	PT.	NAME	DESCRIPTION
1	1	CONVERTER ASM.	THIS DWG. GR. 1
1	1	HEAT SINK MACH.	4003C1126 AR PT. 1
1	1	M-1 FIRING MODULE	4006L1099AM GR. 4 250V
1	1	INSUL. RING	4002B1166 BB PT. 1
8	8	PHENOLIC WASHER	4001A1158ND PT. 2
8	8	WASHER	4001A1158ND PT. 1
2	2	S.C.R.	I.R. CAT. #151RA80
4	4	DIODE	4001A1158JB PT. 1 FORWARD
2	2	DIODE	4001A1158JB PT. 1 REVERSE
5	5	WEKESER CLIP	BLACK NYLON 3/16-6
2	2	WEKESER CLIP	BLACK NYLON 1/2-6
7	7	WEKESER WASHER	D-191
1	1	LEAD ASM.	4001A1158NE GR. 1
6	6	FLEXLOC NUT	0197A7239 PT. 3 5/16
8	8	KEYS NUT	3/4-16 #534-750200-52-0242B-0542B
6	6	JAM NUT	HEX. STL. 3/8-24 N213P24B
AR	AR	LOCTITE	THREADLOCKER 222-21 10ml
8	8	NYLOCK BOLT	M4DS4/6-32Z N22BP25032B 3/8-16-2.0
X	X	INSUL. GREASE	G322L 690S
3	3	SHRINK MYLAR	3/4 I.D. CLEAR TUBING AQ16B60 7.0 LG
1	1	SHRINK TUBING	OUTTAN72 PT. 5 3/16x5.00LG
2	2	TERMINAL	BURNDY YAVI4 #18-10SCR
1	1	AMP	34115 CODE 905209 #18-3/8
8	8	INSUL. TUBE	0169A7050AB PT. 4b
8	8	GLASS SLEEVING	SPEC. AQ22LIA2 SIZE 0 1.36 LG.
8	8	NYLON SCREW	0188A9768 PT. 1 (1/4-20x1.04HEAD) 6425
2	2	FELT	M-7001 DACRON 1/4x.70x1.50
1	1	LASHING	RESI-GLASS 4745B 3/8x3 FT.
-	-	M-1 FIRING MODULE	4006L1099AM GR. 5 500V
-	-	CONVERTER ASM.	THIS DWG. GR. 2
2	2	FLEXLOC NUT	0197A7239 PT. 1 #10-32
1	1	M-1 FIRING MODULE	4006L1099AM GR. 6 750V
-	-	CONVERTER ASM.	THIS DWG. GR. 3
6	6	BELLEVILLE WASHER	B0750-056 5440
4	4	DIODE	4001A1158JA PT. 2 FORWARD
2	2	DIODE	4001A1158JB PT. 2 REVERSE
2	2	S.C.R.	I.R. CAT. #151RA120
X	-	CONVERTER ASM.	THIS DWG. GR. 4
4	4	WASHER	STL. STD. PLAIN 5/16
2	2	CAPSCREW	HEX. HD. STL. 5/16-18x1.26
2	2	CAPSCREW	HEX. HD. STL. 5/16-18x2.50
10	10	WASHER	STL. STD. PLAIN #10
10	10	MACHINE SCREW	RD. HD. STL. #10-32x1.00
8	8	NUT	HEX. HD. STL. JAM 1/2-13
8	8	NUT	HEX. HD. STL. JAM 3/8-16



1 125V
30 250V

REVISED	REVISIONS	PRINTS TO
1	1	C

4004DIO39AE

TORQUE 250⁺⁵⁰₋₀₀ IN. LB.
LOCK WITH 2 DROPS
OF PT. 17 LOCTITE.

SEE NOTES RE. THE 19
INSTALLATION

TORQUE 85⁺¹⁵₋₀₀ IN. LB.
AT FINAL ASM. LOCK
WITH PT. 17. DO NOT
STRAIN THIS STUD. USE TWO WRENCHES-
ABOVE AND BELOW CONN.

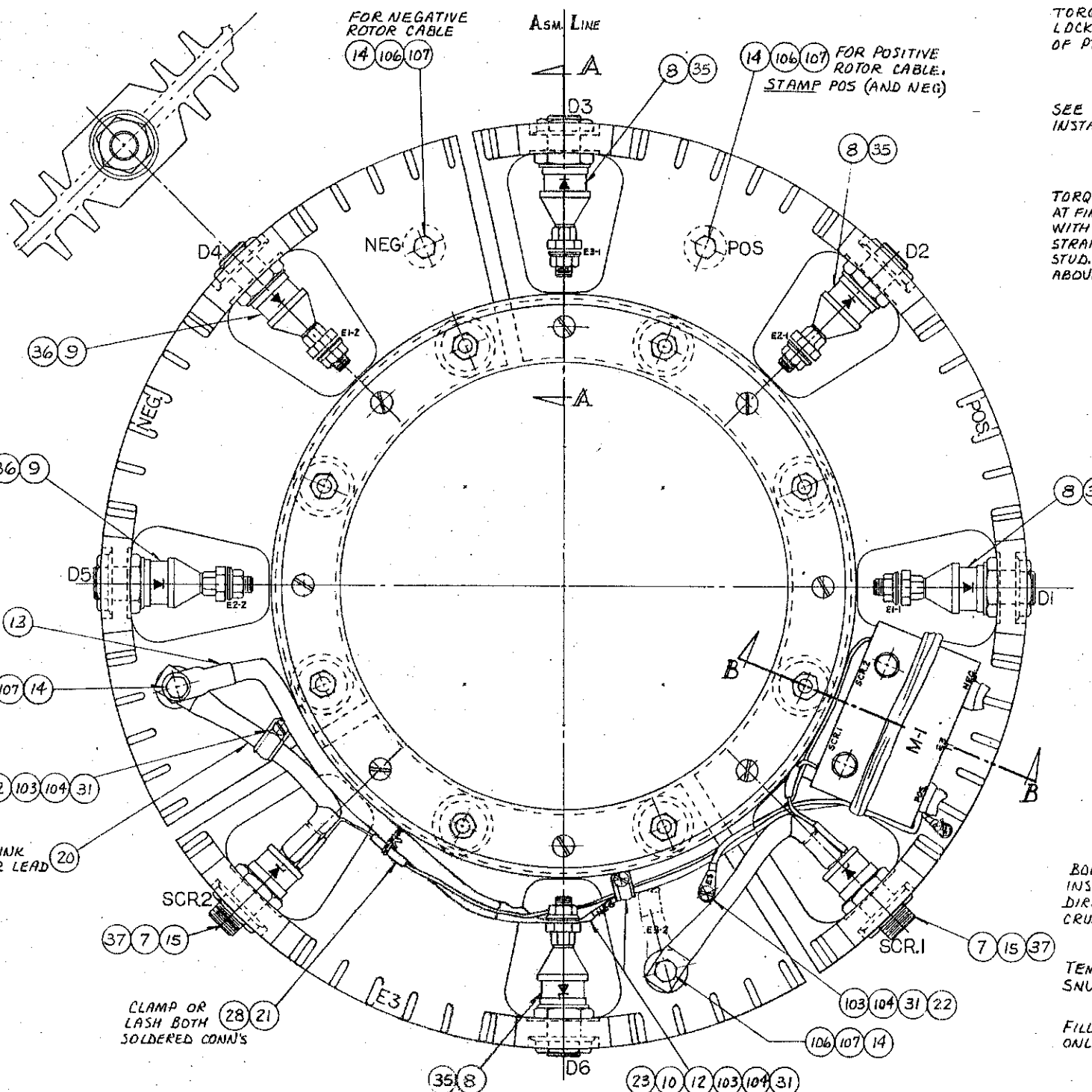
ARMATURE
LEADS(5)

SOAK IN RESIN
& JAM AGAINST
FIN(2) PLACES

BOLT MUST BE
INSTALLED THIS
DIRECTION. DO NOT
CRUSH MODULE

TEMPORARY NUT.
SNUG ONLY

FILLER NUT
ONLY

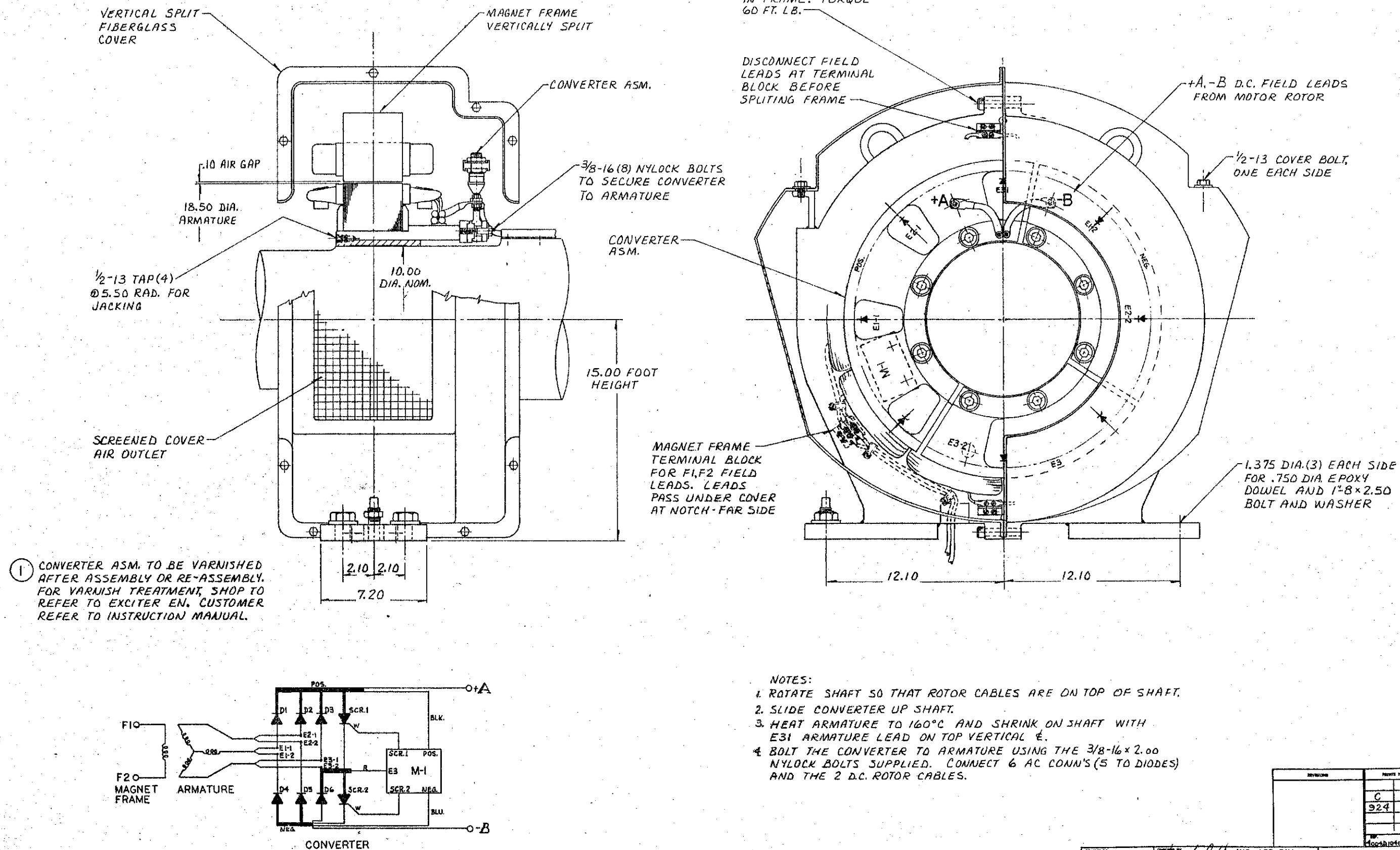


NOTES

- PRIOR TO ASSEMBLY ALL MATING SURFACES TO BE THOROUGHLY CLEANED. BEFORE INSTALLING THE DIODES & SCR'S COAT MATING PARTS WITH A THIN FILM OF G322L INSUL. GREASE. DO NOT GREASE THREADS.
- INSTALL THE SCR'S SO THAT NO STRAIN IS APPLIED TO THE BASE OF THE CELL WHEN THE PIGTAIL IS CONNECTED. POSITION THE GATE LEAD FOR BEST LEAD FLOW TO THE FIRING MODULE.
- ROLL BACK RED SLEEVING ON SCR AND CUT OFF RED CATHODE LEAD. SHRINK ON ONE PIECE OF PT. 20x6.0 LG. OVER ENTIRE LEAD (BUT NOT OVER GATE). SHRINK ON ANOTHER PIECE OF PT. 20 CUT 1.50 LG. OVER PIGTAIL AND WHITE GATE. CUT THE WHITE SCR AND WHITE MODULE LEADS TO LENGTH. SLIP ON 2 PCS. OF PT. 21. SOLDER JOINT AND SHRINK OVER WITH THE TWO PCS. OF PT. 21.
- CONVERTER COMPONENTS TO BE ASSEMBLED AND TESTED PER EML4348. FOR VARNISH TREATMENT, SHOP REFER TO EXCITER EN, CUSTOMER TO INSTRUCTION MANUAL.

EXCITER ASSEMBLY

FIRST MADE FOR 1944B3



NOTES:

1. ROTATE SHAFT SO THAT ROTOR CABLES ARE ON TOP OF SHAFT.
2. SLIDE CONVERTER UP SHAFT.
3. HEAT ARMATURE TO 160°C AND SHRINK ON SHAFT WITH E31 ARMATURE LEAD ON TOP VERTICAL E.
4. BOLT THE CONVERTER TO ARMATURE USING THE 3/8-16x2.00 NYLOCK BOLTS SUPPLIED. CONNECT 6 AC CONN'S (5 TO DIODES) AND THE 2 D.C. ROTOR CABLES.

REVISION	DATE
C	924
924	
924	

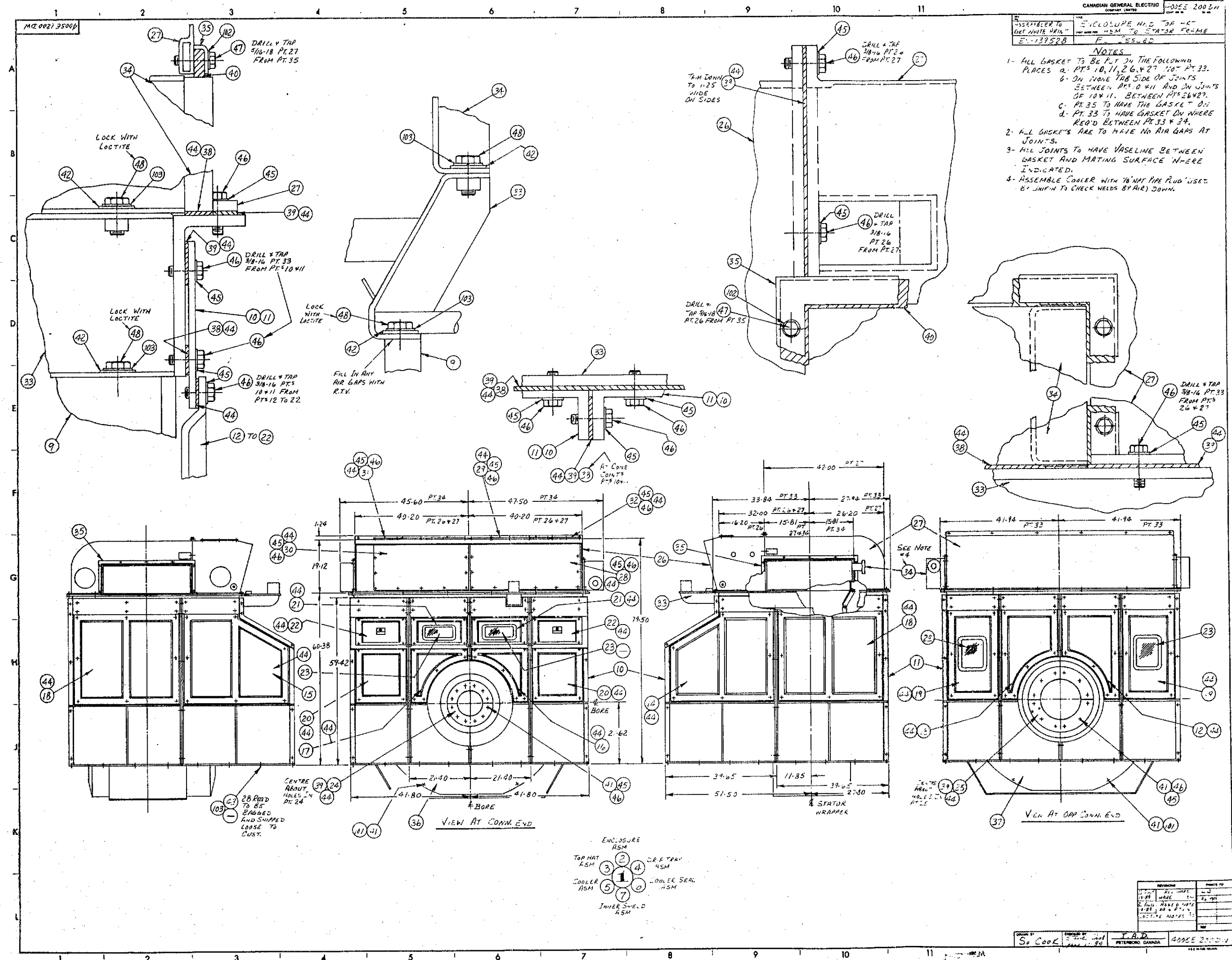
CANADIAN GENERAL ELECTRIC COMPANY LIMITED										CONT. ON SHT 2 SHT. NO 1		
I.A.D.										DRAWING 11		
PETERBOROUGH PLANT										4005E1200 DW		
ENCLOSURE & TOP HAT ASM TO ST. FR.										54		
FIRST MADE FOR EN-139528										F.C.F.		
12	GROUP					15						
19	QUANTITY					27	28	31	42	45	47 48	
7	6	5	4	3	2	1	PT	DRAWING	PG	NO	LEV	
						A	1	THIS DWG	4001		ASSEMBLY	
						A	2	↑	4002		ENCLOSURE ASSEMBLY	
						A	3	↑	4003		TOP HAT	
							4	↑	4004		DRIP TRAY	
							5	↑	4005		COOLER	
							6	↓	4006		COOLER SEAL	
							7	THIS DWG	4007		INNER SHIELDS ASSEMBLY	
							8					
						X	9	4004D1044CK	4001	*	WOUND STATOR	
						X	10	4004D1028DA	4001	*	ENCLOSURE FAB. C.E.	
						X	11	4004D1028DA	4002	*	FAB. O.C.E.	
							12	4004D1001NG	4001		COVER ASM.	
							13	↑	4002			
							14	↑	4003			
							15	↑	4004			
							16	↓	4005			
							17	4004D1001NG	4006			
							18	4004D1001NF	4001			
							19	↑	4002			
							20	↑	4003			
							21	↓	4004			
							22	4004D1001NF	4005		COVER ASM.	
							23	4002B1152MB	4001		WINDOW ASM	
							24	4002B1152MG	P002		SEAL C.E.	
							25	4002B1152MG	P001		ENCLOSURE SEAL O.C.E.	
						X	26	4004D1062AL	4001	*	TOP HAT HALF FAB. C.E.	
						X	27	4004D1001NJ	4001	*	TOP HAT HALF O.C.E.	
						1	28	4003C1115TF	4001		TOP HAT COVER ASSEMBLY	
GROUP DESCRIPTION							REVISION				PRINTS TO	
* - CALLED UP ON E.N. SHT. 2.1											H4	
□ - CALLED UP ON E.N. SHT. 2.4												
											REF.	
DRAWN BY So COOK							CHECKED BY Steve Cook				4005E1200 DW	
PRELIM.							June 11-89				CONT. ON SHT. 2 SHT. NO. 1	

CANADIAN GENERAL ELECTRIC COMPANY LIMITED										PROD 79 80 205		PARTS LIST FOR		DRAWING 11	
I.A.D. PETERBOROUGH PLANT										4005E1200		DW			
ENCLOSURE & TOP HAT ASM TO ST. FR.										F.C.F.					
FIRST MADE FOR EN-139528															
12	GROUP						15								
19	QUANTITY						27	28	31	42	45	47	48	75	77
7	6	5	4	3	2	1	PT	DRAWING	Pg	NO	LEV	NAME AND DESCRIPTION			
				1			29	4003C1115TF	4	002		TOP HAT COVER ASSEMBLY			
				1			30			4	003				
				1			31			4	004				
				1			32	4003C1115TF	4	005		TOP HAT COVER ASSEMBLY			
			1				33	4004D1001NP	4	001		DRIP TRAY FAB			
		X					34	4003C1119LD	P	001		COOLER			
	2						35	4003C1115TG	4	001		COOLER SEAL FAB.			
X							36	4004D1069AP	4	001	*	STATOR SHIELD C.E.			
X							37	4004D1069AR	4	001	*	STATOR SHIELD O.C.E.			
		AR	AR	AR	AR	1	38	4001A1160H	4	P060		GASKET			
			AR	AR	AR	1	39	4001A1160H	4	P100		GASKET } CUT TO SUIT			
	1						40	4001A1160H	4	P010		GASKET }			
12					24		41	4001A1174EB	P	001		WASHER ASM.			
		8	8				42	0528A0579	P	015	ⓑ	WASHER CODE 905588			
					28		43	THIS DWG	P	043	ⓑ	CAPSCR STN STL HEX 1/2-13X1.50			
		AR	AR	AR	AR	1	44	THIS DWG	P	044		VASELINE OR EQUIVALENT			
					88	208	45	B0750-056				BELLEVILLE WASHER CAT*			
					88	208	46	THIS DWG	P	046		CAPSCR STN STL HEX 3/8-16 X 1.00			
	14						47	THIS DWG	P	047		CAPSCR STN STL HEX 5/16-18 X 1.00			
		8	8				48	THIS DWG	P	048	ⓑ	CAPSCR STN STL HEX 1/2-13 X 1.00			

GROUP DESCRIPTION	REVISION	PRINTS TO
* - CALLED UP ON E.N. SHT 2.1	1 JUNE 26-84 ADDED PT. 33 SC	H4
□ - CALLED UP ON E.N. SHT 2.4	2 JULY 11-84 ADDED PTS 45-48 SC	
ⓑ - DENOTES BAG AND SHIP LOOSE AFTER TEST.	3 SEPT 14-84 REV BAG & SHIP LOOSE SC	REF.

DRAWN BY PRELIM.	S. COOK	CHECKED BY June 11-84	Steve Cook	4005E1200 DW
---------------------	---------	--------------------------	------------	--------------

CONT. ON SHT. 3 SHT. NO. 2



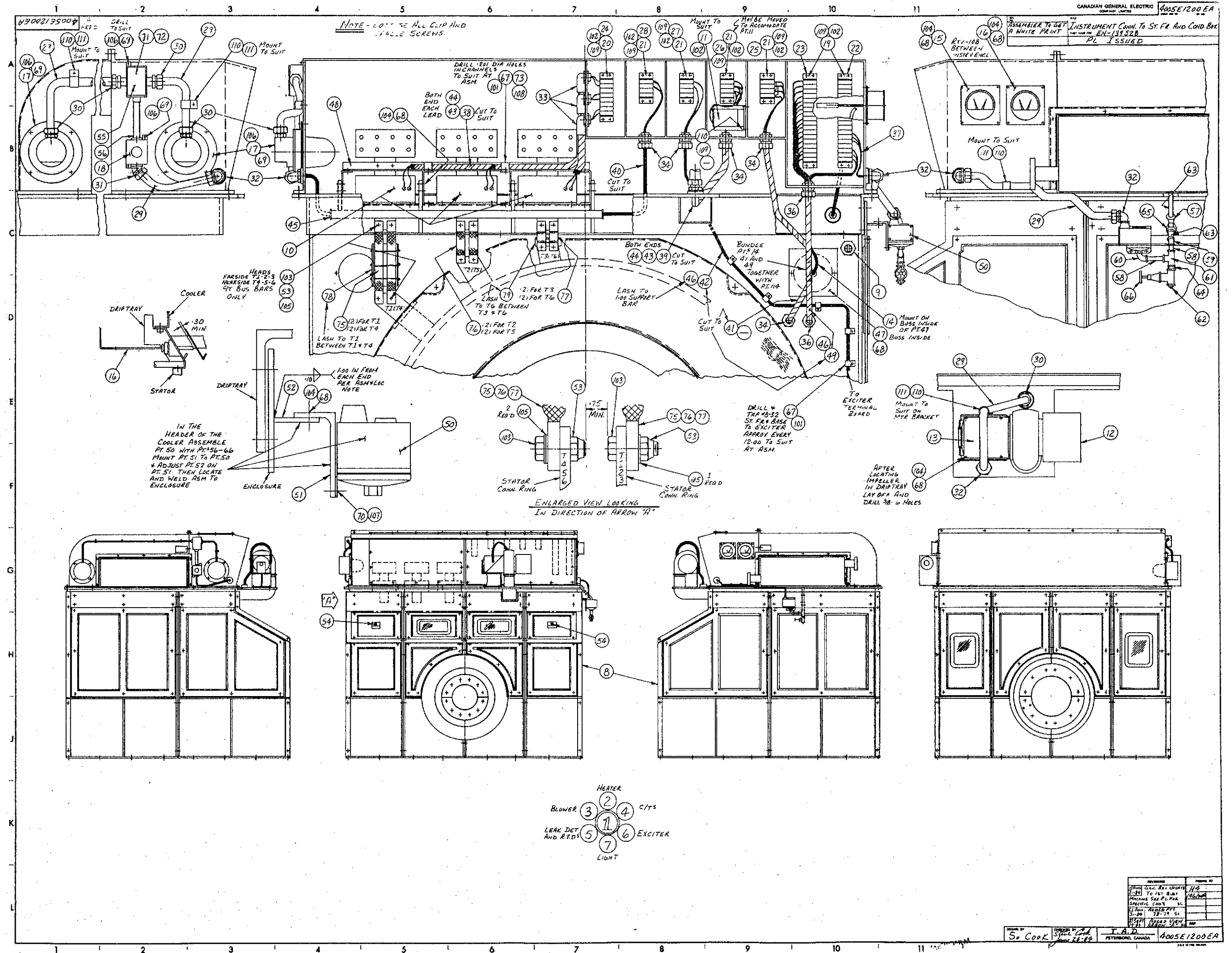
DATE	REVENUE	PAYEE NO.
10-89	KC, MORT.	
10-89	WARE	2
2-90	MORE NOTE	
10-89	20 x 8" V	
	DITTE NOTES	

CANADIAN GENERAL ELECTRIC COMPANY LIMITED										CONT. ON SHT 2 SHT. NO. 1					
I. A. D. PETERBOROUGH PLANT										DRAWING 11					
19 TITLE INSTRUMENT CONN. TO ST. FR & COND BOX										4005E1200 EA					
78 STD/SPC FIRST MADE FOR EN-139528										F.C.F.					
12	GROUP						15								
19	QUANTITY						27	28	31	42	45	47	48	75	77
7	6	5	4	3	2	1	PT	DRAWING	Pg	NO	LEV	NAME AND DESCRIPTION			
						A	1	THIS DWG	4	001		INSTRU. CONN. & ASM			
						A	2		4	002		SPACE HTR. CONN. TO COND. BOX			
				A			3		4	003		MAKEUP BLOWER CONN TO COND. BOX			
			A				4		4	004		CIT ASM TO DRIPTRAY & ST. FR.			
		A					5		4	005		LEAK DET. & RTD CONN TO COND BOX			
	A						6		4	006		EXCITER CONN TO CONN. BOX			
A							7	THIS DWG	4	007		LIGHT CONN TO CONN. BOX			
						X	8	4005E1200DW	4	001	*	ENCL. & TOP HAT ASM.			
						X	9	4006L1086CL	P	020		GROUND STUD			
			X				10	0266A5960	P	001	*	CITS 50/5A (3 REQ'D)			
				1			11	CR120B011				RELAY GSCAN CAT Pg 292 600V			
				-			12	4001A11286F	P	002		AIR FILTER			
				1			13	4001A11286F	P	003		MOTOR & IMPELLER			
		1					14	4002B1154AD	P	006		AIR CCT. R.T.D			
		1					15	4002B1142PL	4	002		AIR TEMP INDIC (OUT)			
		1					16	4002B1142PM	P	001		AIR TEMP INDIC (IN)			
2							17	4002B1427HM	4	001		LIGHT FIXTURE			
1							18	V-3120				LIGHT SW. KONDU CAT			
		2					19	H-18				TERMINAL BLOCK(18PT.)			
			1				20	H-8				TERMINAL BLOCK(8PT.)			
1	1			1	1		21	H-4				TERMINAL BLOCK(4PT.)			
		1					22	4002B1152ML	P	001		NAMEPLATE			
		1					23		P	002		EPOXY			
			1				24		P	003		INTO PLACE			
				1			25		P	004		NEAR TERM.			
					1		26		P	005		BOARD. LOC			
	1						27		P	006		TO SUIT IN			
1							28	4002B1152ML	P	007		EACH			
GROUP DESCRIPTION								REVISION				PRINTS TO			
* DENOTES CALLED ON EN SHT 2.1								1 JULY 16-84 PT. 13 WAS SC 4001A11286F P.001				H4			
								2 AUG 21-84 REV PTS 22 TO 28 SC							
								3 AUG 29-84 DELETE PT. 12 SC				REF.			
DRAWN BY S. COOK								CHECKED BY Steve Cook				4005E1200EA			
PRELIM.								June 26-84				CONT. ON SHT. 2 SHT. NO. 1			

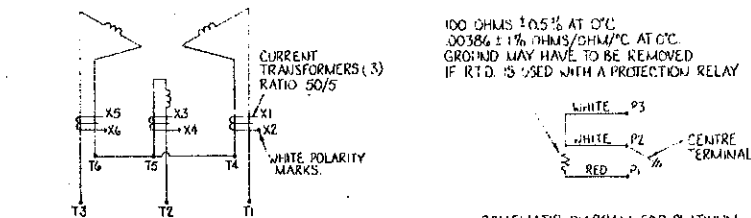
CANADIAN GENERAL ELECTRIC COMPANY LIMITED										CONT ON SHT 3 SHT. NO. 2					
I.A.D.										DRAWING					
PETERBOROUGH PLANT.										4005E1200 EA					
INSTRUMENT CONN. TO ST. FR. & COND. BOX										54					
FIRST MADE FOR EN-139528										F.C.F.					
12	GROUP						15								
19	QUANTITY						27	28	31	42	45	47	48	75	77
7	6	5	4	3	2	1	PT	DRAWING	Pg	NO	LEV	NAME AND DESCRIPTION			
AR		AR		AR			29	THIS DWG	P029			FLEX LIQUID TIGHT CONDUIT 1/2" X 10 FT			
4				1			30	5332				CONNECTOR STRAIGHT 1/2" NPT			
1							31	5342				CONNECTOR 45° ELBOW 1/2" NPT			
1		2		1			32	5352				CONNECTOR 90° ELBOW 1/2" NPT			
			3				33	321				CONN. TITE-BITE 90° ELBOW 3/4" NPT			
1	1				2		34	2532				CONN. STRAIN RELIEF STR. 3/4" NPT			
				1			35	2534				CONN. STRAIN RELIEF STR. 3/4" NPT			
		2					36	2536				CONN. STRAIN RELIEF STR. 3/4" NPT			
		3					37	4001A1101GT	P006			WIRE			
			1				38	THIS DWG	P038			WIRE 666 VULKENE BX-90 600V 2 COND #14 X 6 FT			
				3			39	4001A1101GT	P004			WIRE			
1							40	THIS DWG	P040			WIRE RUBBER CORD TYPE SO 600V 2 COND #14 X 12 FT			
					X		41		P041			WIRE SUPPLIED ON HTR ASM			
	1						42		P042			WIRE DELTASIL CLS 600V 1 COND #10 X 30 FT			
			6	2			43		P043			BUSHING (ANTI SHORT) NO. 0			
			AR	AR			44	THIS DWG	P044			TAPE AQ23B5A2 PRESS. SENSITIVE GLASS .75 WIDE 1 ROLL			
2							45	4001A1101GW	P001			BUSHING			
	6	2					46	4001A1101HH	P007			CABLE WRAPPER			
		1					47	4001A1174JD	G001			COVER ASM			
			1				48	4004D100INT	G001			CIT MOUNTING TO DRIP TRAY			
		X					49	THIS DWG	P049			WIRE SUPPLIED ON WOUND ST.			
		1					50	4002B1114BA	P001			LEAK DETECTOR			
		1					51	4004D100INL	P012			SUPPORT			
		1					52	4004D100INL	P018			SUPPORT			
			12				53	0197A7239	P006			FLEXLOC NUT (1/2-13)			
					2		54	THIS DWG	P054			PIPE PLUG BRASS 1/4" NPT			
1							55	FST 1				DEVICE BOX 1/2" NPT CROUSE-HINDS			
1							56	THIS DWG	P056			NIPPLE 1/2" NPT 6.00			
GROUP DESCRIPTION								REVISION				PRINTS TO			
								1 AUG 21-89				REVPTS 30, 32, 33 34 35 36 37 + 39			
DRAWN BY S. COOK								CHECKED BY Steve Cook				4005E1200 EA			
PRELIM.								June 26-89				CONT. ON SHT. 3 SHT. NO. 2			

<div style="display: flex; justify-content: space-between;"> <div style="width: 40%;"> <p>6 LEVEL 17</p> <p>63 STOCK 67</p> <p>68 ORIGIN 72</p> </div> <div style="width: 40%; text-align: center;"> <p>CANADIAN GENERAL ELECTRIC COMPANY LIMITED</p> <p>I.A.D</p> <p>PETERBOROUGH PLANT</p> </div> <div style="width: 15%;"> <p>PROD</p> <p>79 80</p> <p>205</p> </div> <div style="width: 5%;"> <p>PARTS LIST FOR</p> </div> </div>										CONT ON SHT 4 SHT. NO. 3											
										DRAWING										11	
										4005E/200 EA										54	
										19 TITLE INSTRUMENT CONN. TO ST. FR. & COND. BOX										F.C.F.	
78 STD/SPC FIRST MADE FOR EN-139528										F.C.F.											
12 GROUP										15											
19 QUANTITY										27 28 31											
7 6 5 4 3 2 1 PT										DRAWING P _G NO LEV		NAME AND DESCRIPTION									
										57		THIS DWG P057 *		STREET ELBOW 45° 1/4" NPT							
										58		P058 *		NIPPLE 1/4" NPT 3.00 LONG							
										59		P059 *		ELBOW 45° 1/4" NPT							
										60		P060 *		STREET ELBOW 90° 1/4" NPT							
										61		P061 *		TEE 1/4" NPT							
										62		P062		PIPE PLUG BRASS 1/4" NPT							
										63		P063 *		NIPPLE 1/4" NPT 2.00 LONG							
										64		P064 *		NIPPLE 1/4" NPT 7/8 CLOSE							
										65		P065 *		UNION 1/4" NPT							
										66		THIS DWG P066		VALVE GLOBE BRASS 1/4" NPT							
10										5		67		C29805-8-24 CLIP TINNERMAN CAT #							
										12 16 4		68		THIS DWG P068 LOCWELL CAPSCR SOCHD 3/8-16X.62							
10												69		THIS DWG P069 LOCWELL CAPSCR SOCHD 1/4-20X.62							
										2		70		THIS DWG P070 LOCWELL CAPSCR SOCHD #10-24X.38							
1												71		DS1004 COVER CROUSE-HINDS							
1												72		GASK 91 GASKET CROUSE-HINDS							
										5		73		0541A0956 P001 FLEXLOC NUT (#8-32)							
										1		74		4004D1001NW GENERATOR SCHEMATIC DIAG							
										4		75		4002B1152MS 4001 FLEXIBLE CONNECTION (T1-T4)							
										4		76		4002B1152MS 4002 FLEXIBLE CONNECTION (T2-T5)							
										4		77		4002B1152MS 4003 FLEXIBLE CONNECTION (T3-T6)							
										1		78		4002B1152NCP 001 LEAD INSULATOR (T1)							
										1		79		4002B1152NCP 002 LEAD INSULATOR (T6)							
GROUP DESCRIPTION										REVISION										PRINTS TO	
*- DENOTES PART THAT ARE TO GALVANIZED										11 AUG 21-84 REV PT 57 TO 65 21-84 ADDED PT 75, 76, 77 SC										H4	
																				REF.	
																				REF.	
DRAWN BY S. COOK										CHECKED BY Steve Cook										4005E/200 EA	
PRELIM.										June 26-89										CONT. ON SHT. 4 SHT. NO. 3	

CANADIAN GENERAL ELECTRIC COMPANY LIMITED										CONT. ON SHT - SHT. NO. 4		
PETERBOROUGH PLANT										DRAWING		
I. A. D.										4005E1200 EA		
INSTRUMENT CONN. TO ST. FR. & COND. BOX										54		
FIRST MADE FOR EN-139528										F.C.F.		
12	GROUP					15						
19	QUANTITY					27	28	31	42	45	47	48
7	6	5	4	3	2	1	PT	DRAWING	P. NO	LEV	NAME AND DESCRIPTION	
AR	AR	AR	AR	AR	AR	114	THIS DWG	P 114			TIE WRAP TY-24M	
AR	AR	AR	AR	AR	AR	113		P 113			TIE WRAP CRADLES	
	5					112		P 112			CABLE CLIP HP5N	
5	2		1			111		P 111			CABLE CLIP HP14N	
AR	4	AR	AR	AR	AR	110		P 110			SOC HD CAPSCREW #10-32X.50	
			4			109		P 109			INTERNAL TOOTH WASHER #10	
		5				108		P 108			WASHER STD STL #8	
	2					107		P 107			WASHER STD STL #10	
10			4			106		P 106			WASHER STD STL 1/4	
		48				105		P 105			WASHER STD STL 1/2	
	10	16				104		P 104			WASHER STD STL 3/8	
		24				103		P 103			CAPSCR HEX HD STL 1/2-13X 1.50	
9	4	15	4	7	4	102		P 102			MACH SCR RD HD #10-32 X.6Z	
10		5				101	THIS DWG	P 101			MACH SCR RD HD #8-32 X.50	
GROUP DESCRIPTION							REVISION				PRINTS TO	
							11 AUG 10-84				ADDED PT'S 109 TO 114 SC H4	
							21 AUG 21-84				GEN REV CHG'D PT'S 103+105 SC	
DRAWN BY So COOK							CHECKED BY Steve Cook				4005E1200EA	
PRELIM.							June 26-84				CONT. ON SHT. - SHT. NO. 4	



3RD ANGLE		OUTLINE OF SYNCHRONOUS GENERATOR AND BRUSHLESS EXCITER									
DIMENSIONS IN INCHES		CLASS 1100 NAVALAVS VESSEL									
TYPE/PURPOSE/REV		PF	KVA	VOLTS	HZ	PH	SF	REQUISITION	E.N.	PT	
AT 900	8	2100	0.8	2425	500	60	3	10	9280-253-200	139533	
AF 900	10	17		125						139482	



SCHEMATIC DIAGRAM OF STATOR CONNECTIONS

FOR THE ROTATION SHOWN :

CONNECT T1 TO LINE 3
CONNECT T2 TO LINE 4

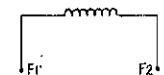
CONNECT T2 TO LINE 2
CONNECT T3 TO LINE 1

T4, T5 & T6 ARE CONNECTED TO FORM THE NEUTRAL INSIDE THE MACHINE.

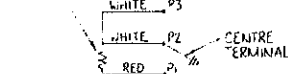
THE SUPPLY EMF'S MUST REACH A MAXIMUM
IN THE ORDER : LINE 1, LINE 2, LINE 3

IT IS RECOMMENDED THAT THE PHASE ORDER BE TESTED BEFORE CONNECTING THE MACHINE.

1. *Journal of the American Medical Association*, 1997; 277: 1033-1037.



SCHEMATIC DIAGRAM OF EXCITER CONNECTIONS

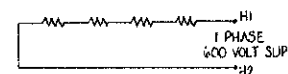


SCHEMATIC DIAGRAM FOR PLATINUM
RESISTANCE TEMPERATURE DETECTORS

(6 R.T.D'S IN STATOR)

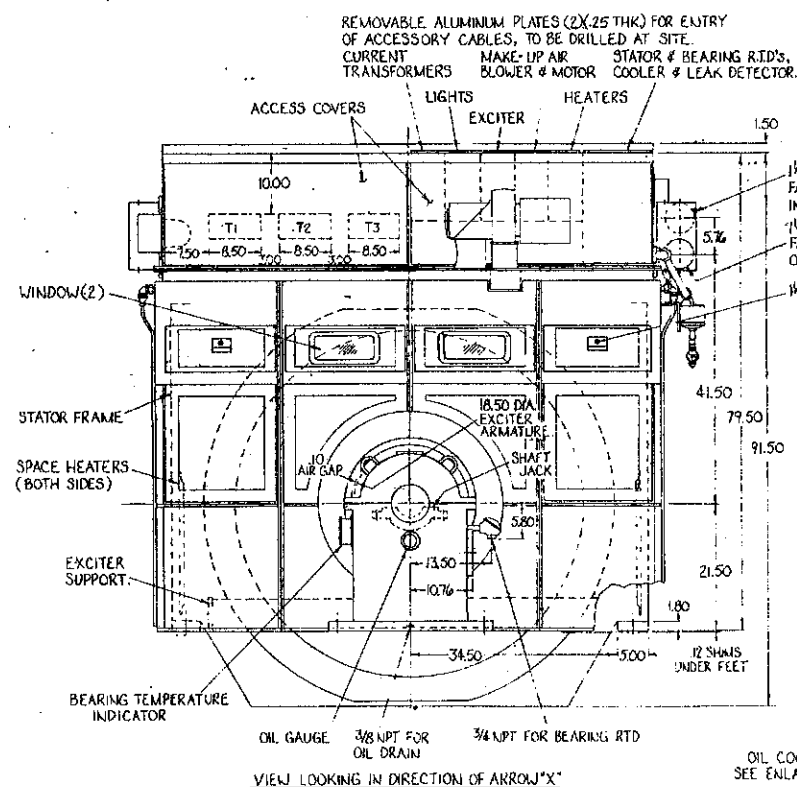
(1 RT.D. FOR AIR INTO COOLER)

(1 R.T.D. FOR BEARING)

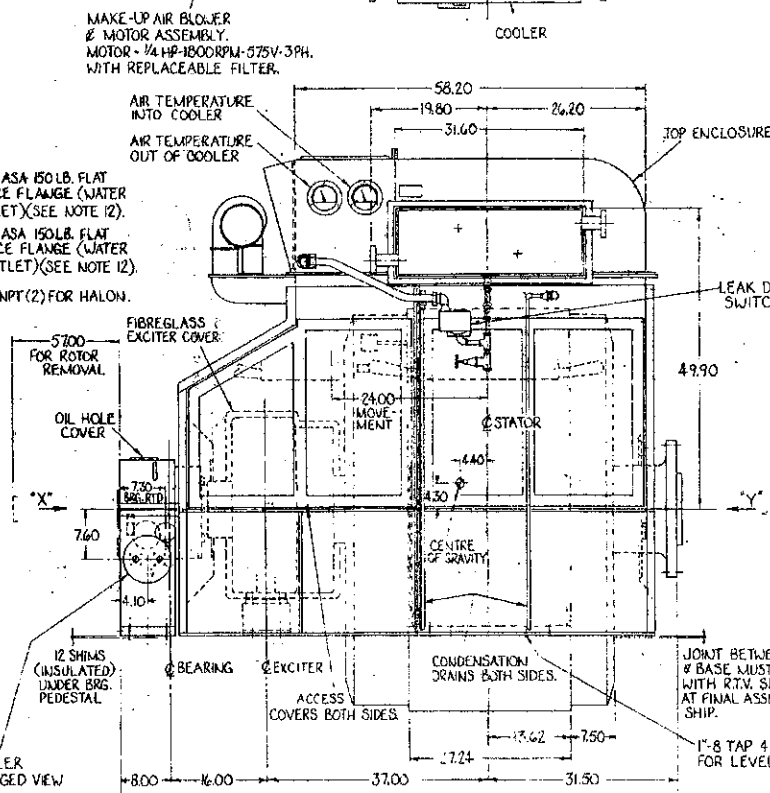


SCHEMATIC DIAGRAM FOR
HEATER CONNECTIONS

HEAT DISSIPATION = 1172 WATTS

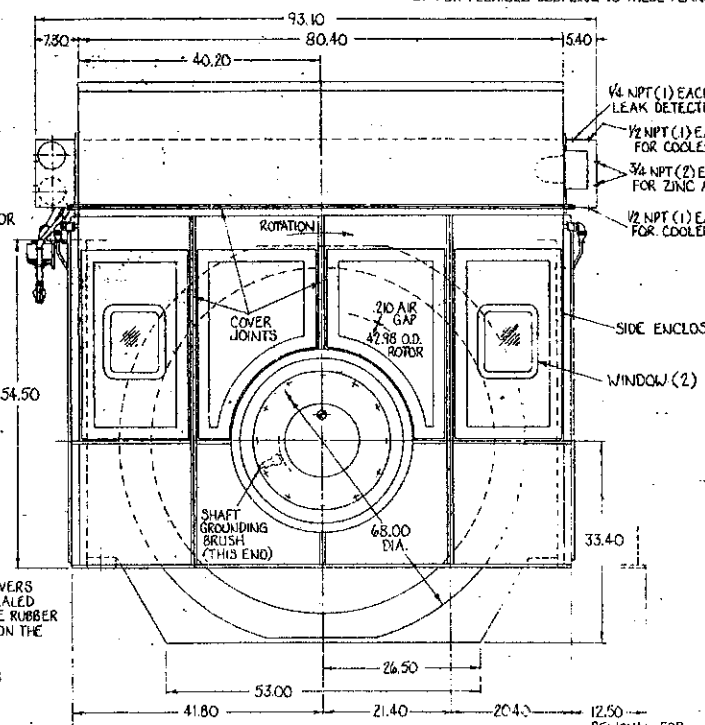


VIEW LOOKING IN DIRECTION OF ARROW "X"

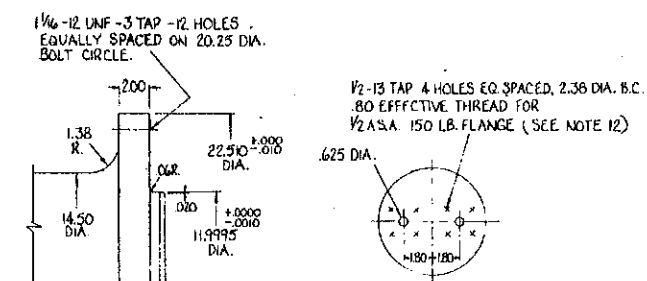


SCHEMATIC FOR LEAK DETECTOR
SWITCH RATING - 10 AMPS. 250 VOLTS A.C.

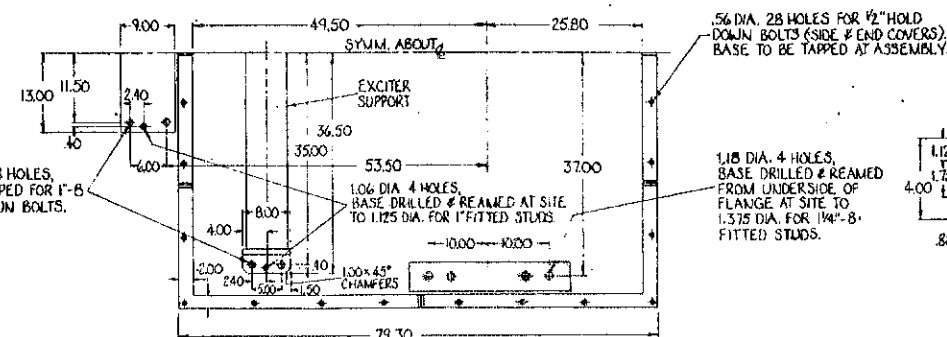
SWITCH RATING - 10 AMPS, 250 VOLTS A.C.



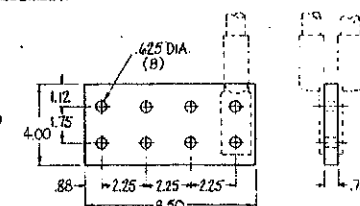
VIEW LOOKING IN DIRECTION OF ARROW "Y"



ENLARGED VIEW OF
BEARING COOLING CONNECTIONS



HALF PLAN VIEW OF DRILLING IN
BRG. PEDESTAL, EXCITER SUPPORT, STATOR FRAME & COVERS



DETAIL OF STATOR BUS
3 PROVIDED - T₁, T₂, T₃

APPROXIMATE WEIGHTS:

ROTOR	- 13,000 LB.
STATOR	- 12,000 LB.
BEARING	- 900 LB.
EXCITER STATOR	- 500 LB.
EXCITER SUPPORT	- 300 LB.
COOLER	- 1,400 LB.
ENCLOSURE	- 2,900 LB.
TOTAL	- 31,000 LB.