

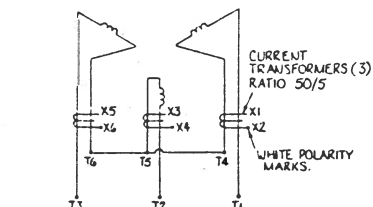
4005E1203CR

CANADIAN GENERAL ELECTRIC

4005E1203CR

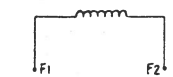
OUTLINE OF SYNCHRONOUS GENERATOR AND BRUSHLESS EXCITER									
CLASS 1100 NAVAL VESSEL									
TYPE/POLES	KV	PF	KVA/MIN	Hz	PHS	RESISTANCE	EL	P	
AT 1900	8	2.100	10.8	24.25	600	60	1.3	10.19	250-270
AF 1900	10	17				125	1		139482

HULL NO. 451

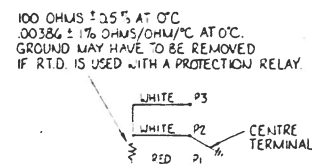


SCHEMATIC DIAGRAM OF STATOR CONNECTIONS

FOR THE ROTATION SHOWN:
CONNECT T1 TO LINE 3
CONNECT T2 TO LINE 2
CONNECT T3 TO LINE 1
T4, T5 & T6 ARE CONNECTED TO FORM THE NEUTRAL INSIDE THE MACHINE.
THE SUPPLY EMF'S MUST REACH A MAXIMUM IN THE ORDER: LINE 1, LINE 2, LINE 3.
IT IS RECOMMENDED THAT THE PHASE ORDER BE TESTED BEFORE CONNECTING THE MACHINE.

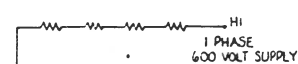


SCHEMATIC DIAGRAM OF EXCITER CONNECTIONS



SCHEMATIC DIAGRAM FOR PLATINUM RESISTANCE TEMPERATURE DETECTORS

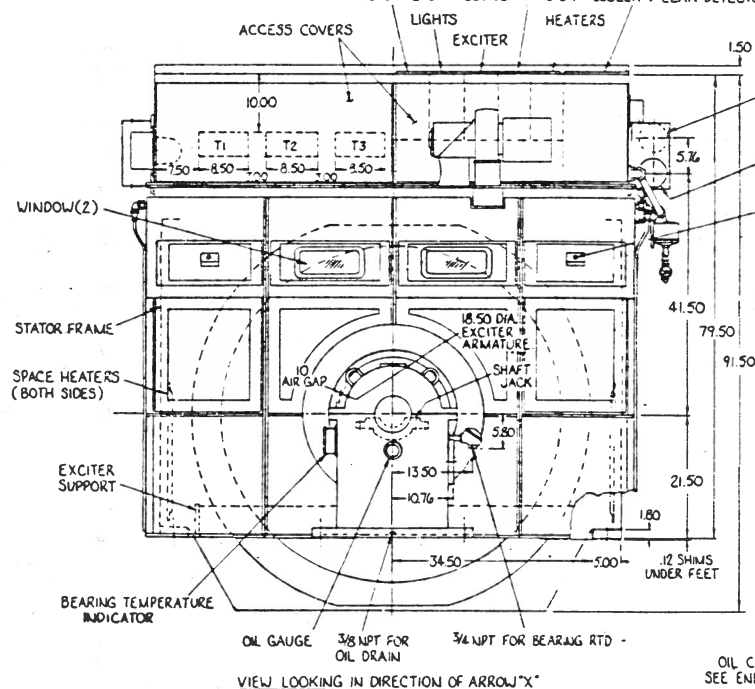
(6 RTD'S IN STATOR)
(1 RTD FOR AIR INTO COOLER)
(1 RTD FOR BEARING)



SCHEMATIC DIAGRAM FOR HEATER CONNECTIONS

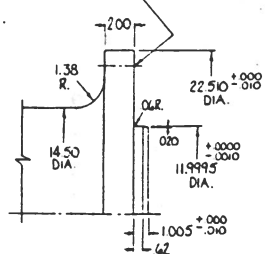
HEAT DISSIPATION - 1172 WATTS

REMOVABLE ALUMINUM PLATES (2X 25 THK) FOR ENTRY OF ACCESSORY CABLES, TO BE DRILLED AT SITE.
CURRENT TRANSFORMERS MAKE-UP AIR BLOWER & MOTOR COOLER & BEARING RTD'S STATOR & LEAK DETECTOR.



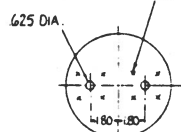
VIEW LOOKING IN DIRECTION OF ARROW "X"

1/4-12 UNF-3 TAP-12 HOLES EQUALLY SPACED ON 20.25 DIA. BOLT CIRCLE.

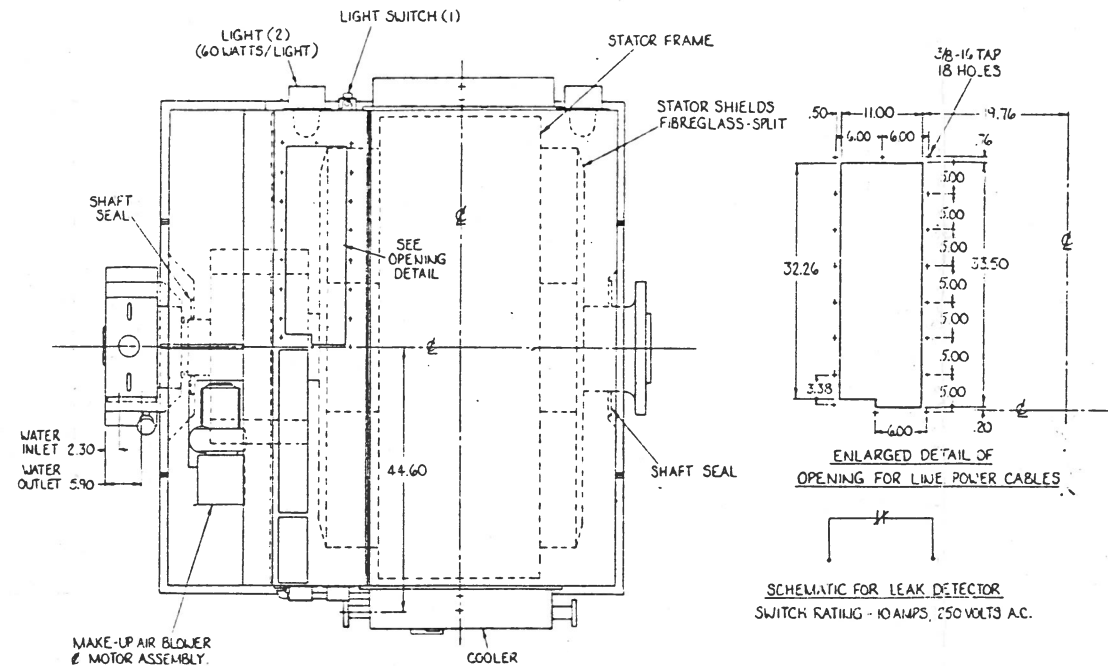


DETAIL OF SHAFT EXTENSION

1/2-13 TAP 4 HOLES EQ. SPACED, 2.38 DIA. B.C. .80 EFFECTIVE THREAD FOR 1/2 ASA 150 LB. FLANGE (SEE NOTE 12)

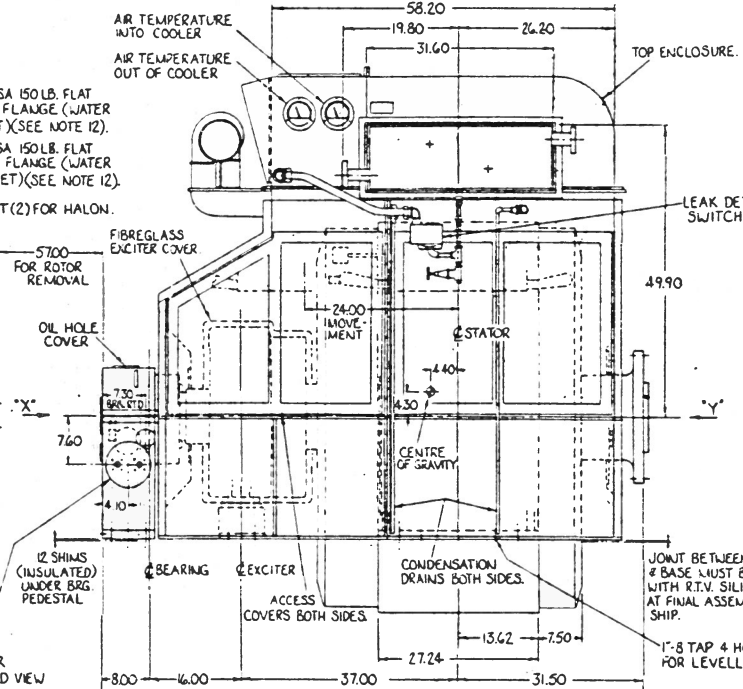


ENLARGED VIEW OF BEARING COOLING CONNECTIONS



ENLARGED DETAIL OF OPENING FOR LIVE POWER CABLES

SCHEMATIC FOR LEAK DETECTOR SWITCH RATING - 10Amps, 250 Volts A.C.



OIL COOLER SEE ENLARGED VIEW

1.38 DIA. 8 HOLES, BASE DRILLED & REAMED AT SITE TO 1.125 DIA. FOR 1" FITTED STUDS.

1.06 DIA. 4 HOLES, BASE DRILLED & REAMED AT SITE TO 1.125 DIA. FOR 1" FITTED STUDS.

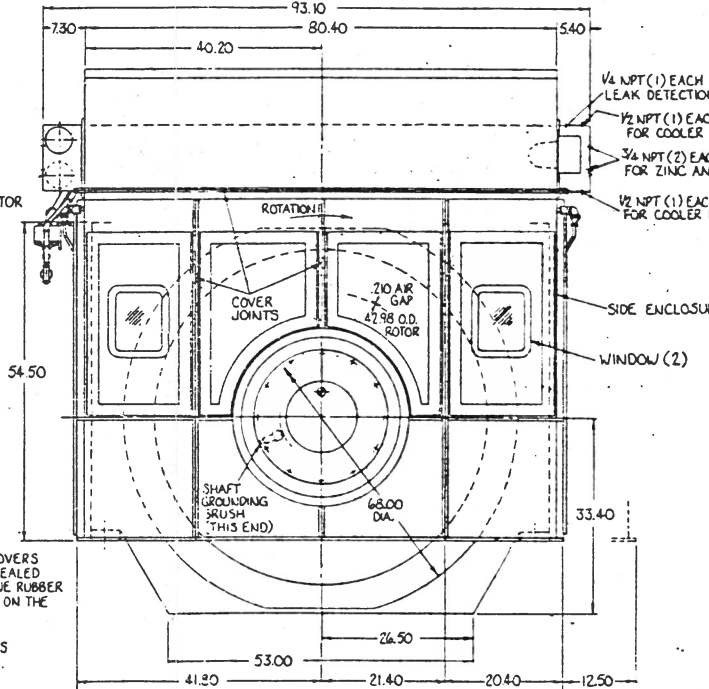
1.06 DIA. 4 HOLES, BASE DRILLED & REAMED AT SITE TO 1.125 DIA. FOR 1" FITTED STUDS.

1.06 DIA. 4 HOLES, BASE DRILLED & REAMED AT SITE TO 1.125 DIA. FOR 1" FITTED STUDS.

1.06 DIA. 4 HOLES, BASE DRILLED & REAMED AT SITE TO 1.125 DIA. FOR 1" FITTED STUDS.

1.06 DIA. 4 HOLES, BASE DRILLED & REAMED AT SITE TO 1.125 DIA. FOR 1" FITTED STUDS.

1.06 DIA. 4 HOLES, BASE DRILLED & REAMED AT SITE TO 1.125 DIA. FOR 1" FITTED STUDS.



VIEW LOOKING IN DIRECTION OF ARROW "Y"

APPROXIMATE WEIGHTS:

ROTOR	- 13,000 LB.
STATOR	- 12,000 LB.
BEARING	- 900 LB.
EXCITER STATOR	- 500 LB.
EXCITER SUPPORT	- 300 LB.
COOLER	- 1,400 LB.
ENCLOSURE	- 2,900 LB.
TOTAL	- 31,000 LB.

DETAIL OF STATOR BUS 3 PROVIDED - T1, T2, T3

HALF PLAN VIEW OF DRILLING IN BRG. PEDESTAL, EXCITER SUPPORT, STATOR FRAME & COVERS.

J. RAY

DEC 1983

PETERBORO, CANADA

4005E1203CR