

GENERAL NOTES

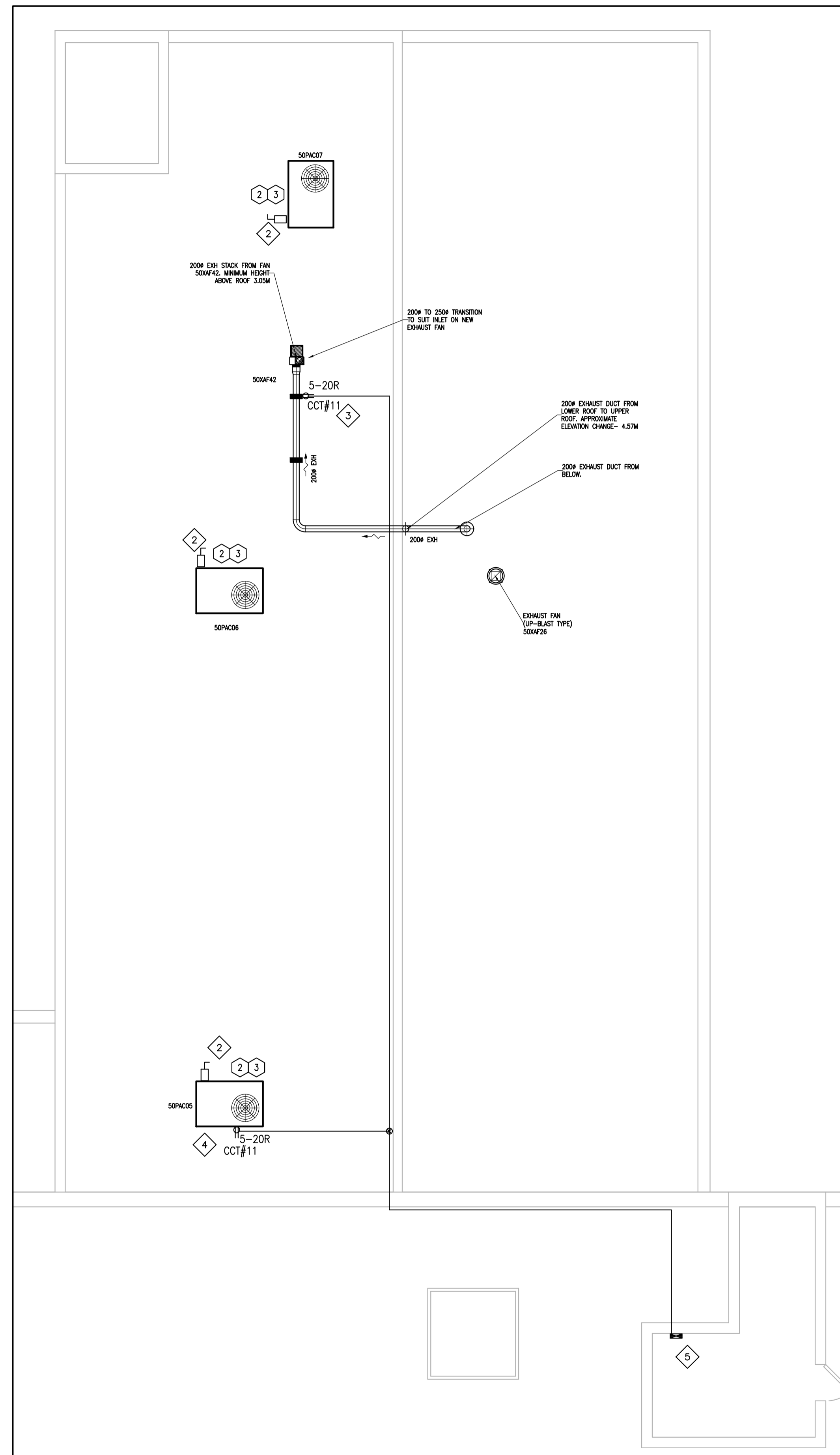
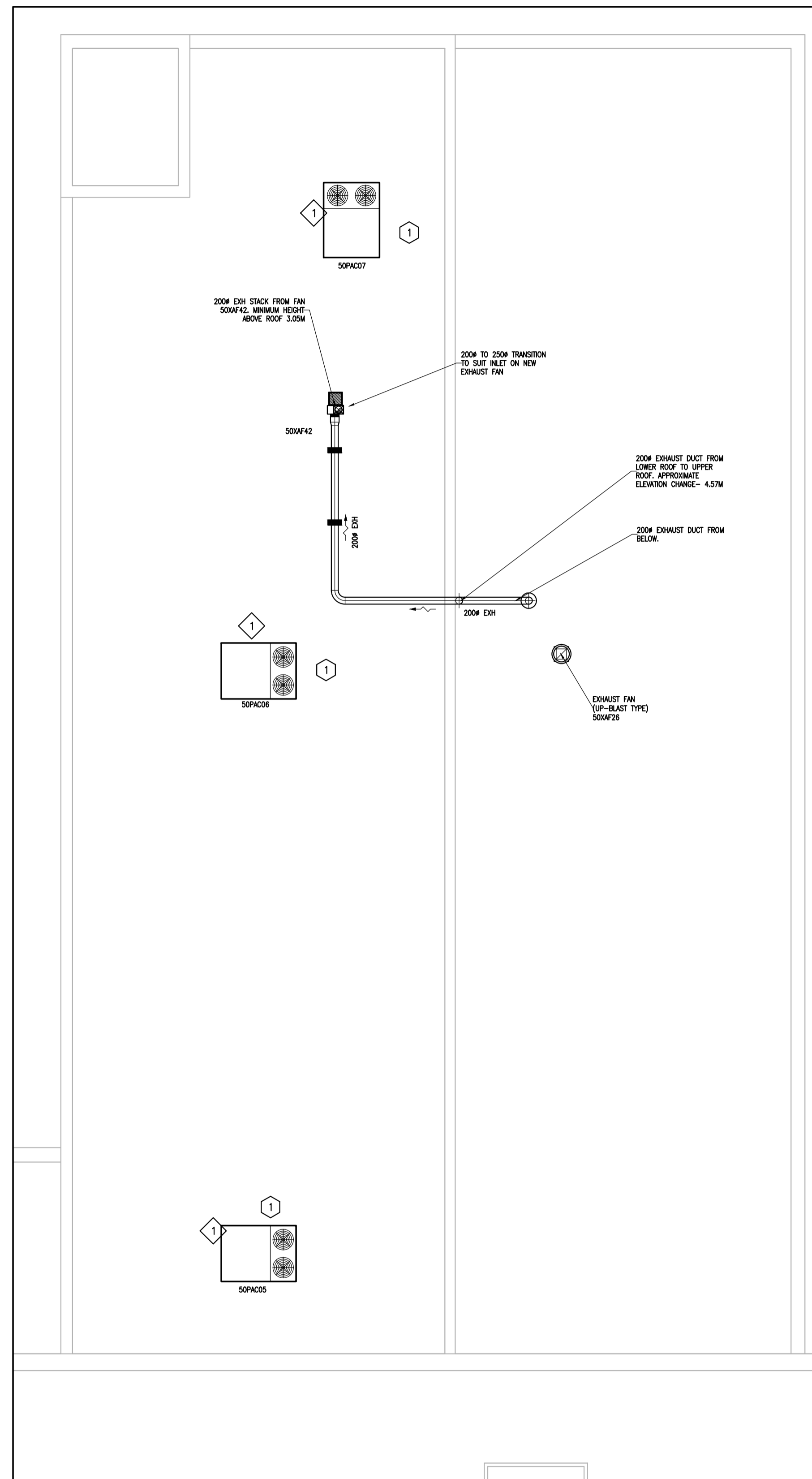
- CONTRACTORS TO CHECK AND VERIFY ALL DIMENSIONS ON SITE PRIOR TO DEMOLITION OR CONSTRUCTION AND REPORT ANY ERRORS OR OMISSIONS TO DEPARTMENTAL REPRESENTATIVE.
- CONTRACTORS MUST VISIT THE SITE & FULLY FAMILIARIZE THEMSELVES WITH THE SCOPE OF THE WORK.
- PREVENT THE SPREAD OF DUST & DEBRIS BEYOND THE WORK AREA AND CLEAN ALL SURFACES AT COMPLETION.
- MAKE GOOD ALL SURFACES AFFECTED BY THIS WORK.
- COORDINATE ALL SHUTDOWNS WITH THE DEPARTMENTAL REPRESENTATIVE.
- PROVIDE ALL LABOUR AND MATERIAL REQUIRED TO FORM A COMPLETE, FUNCTIONAL SYSTEM AS DESCRIBED ON DRAWINGS.

MECHANICAL NOTES: (X)

- DISCONNECT, REMOVE AND DISPOSE OFF SITE EXISTING AIR HANDLING UNITS (SOPAC05, SOPAC06 AND SOPAC07) ALONG WITH ASSOCIATED DUCT CONNECTIONS AND ROOF CURBS.
- PROVIDE NEW ROOF TOP AIR HANDLING UNITS (RTU'S), ALL REQUIRED DISCONNECTS AND ROOF CURBS AS INDICATED. REFER TO SPECIFICATIONS AND SCHEDULES FOR ADDITIONAL INFORMATION AND PERFORMANCE. ROOF TOP AIR HANDLING UNITS SHALL HAVE "THROUGH BASE CONNECTIONS" FOR POWER AND CONTROL CONNECTIONS.
- TEST, ADJUST AND BALANCE NEW RTU'S TO QUANTITIES INDICATED. PROVIDE NRC REPRESENTATIVE WITH BALANCING REPORT FOR REVIEW BEFORE INSERTION INTO O&M MANUALS.

ELECTRICAL NOTES: (X)

- DISCONNECT ELECTRICAL FEED AND REMOVE WIRE BACK TO DISCONNECT IN HIGH BAY AREA ON GROUND FLOOR. REFER TO DRAWING G02.
- PROVIDE NEW WEATHERPROOF DISCONNECT FOR NEW ROOFTOP UNIT. REFER TO SINGLELINE DETAIL 3/603 FOR DETAILS.
- 5-20R RECEPTACLE FOR THE PURPOSE OF MEETING CEC RULE 26-704. PROVIDE 20A GFCI BREAKER AND CIRCUIT AS SHOWN USING # 12 WIRE IN PVC CONDUIT. PROVIDE EXPANSION COUPLING. MOUNT ON EXISTING UNISTRUT SUPPORT AT A MINIMUM OF 750mm ABOVE THE FINISHED ROOF SURFACE IN WEATHERPROOF BOX.
- 5-20R RECEPTACLE FOR THE PURPOSE OF MEETING CEC RULE 26-704. CIRCUIT FROM SAME BREAKER PROVIDED IN NOTE 3 USING # 12 WIRE IN PVC CONDUIT. PROVIDE EXPANSION COUPLING. MOUNT ON THE SIDE OF THE ROOFTOP UNIT AT A MINIMUM OF 750MM ABOVE THE FINISHED ROOF SURFACE IN WEATHERPROOF BOX.
- EXISTING PANEL IN PENTHOUSE.



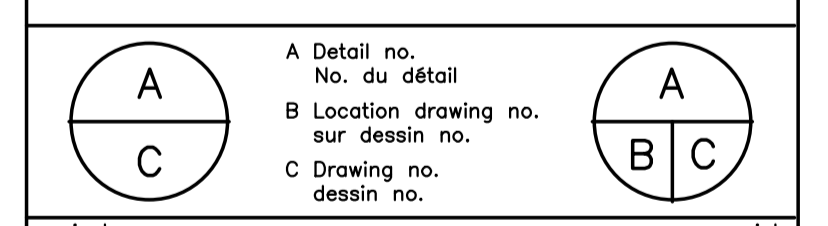
1
G01
 BUILDING M-50- HIGH BAY- ROOF PART PLAN
 ELECTRICAL AND MECHANICAL DEMOLITION
 SCALE: 1:100

2
G01
 BUILDING M-50- HIGH BAY- ROOF PART PLAN
 ELECTRICAL AND MECHANICAL NEW WORK
 SCALE: 1:100

0	JAN. 2014	ISSUED FOR TENDER	JWG
No.	Date	Revision	By: Par:

Date Printed DD MM YYYY Date imprimée

- Verify all dimensions and site conditions and be responsible for same
- Vérifier toutes les dimensions et l'état des lieux et en assumer la responsabilité

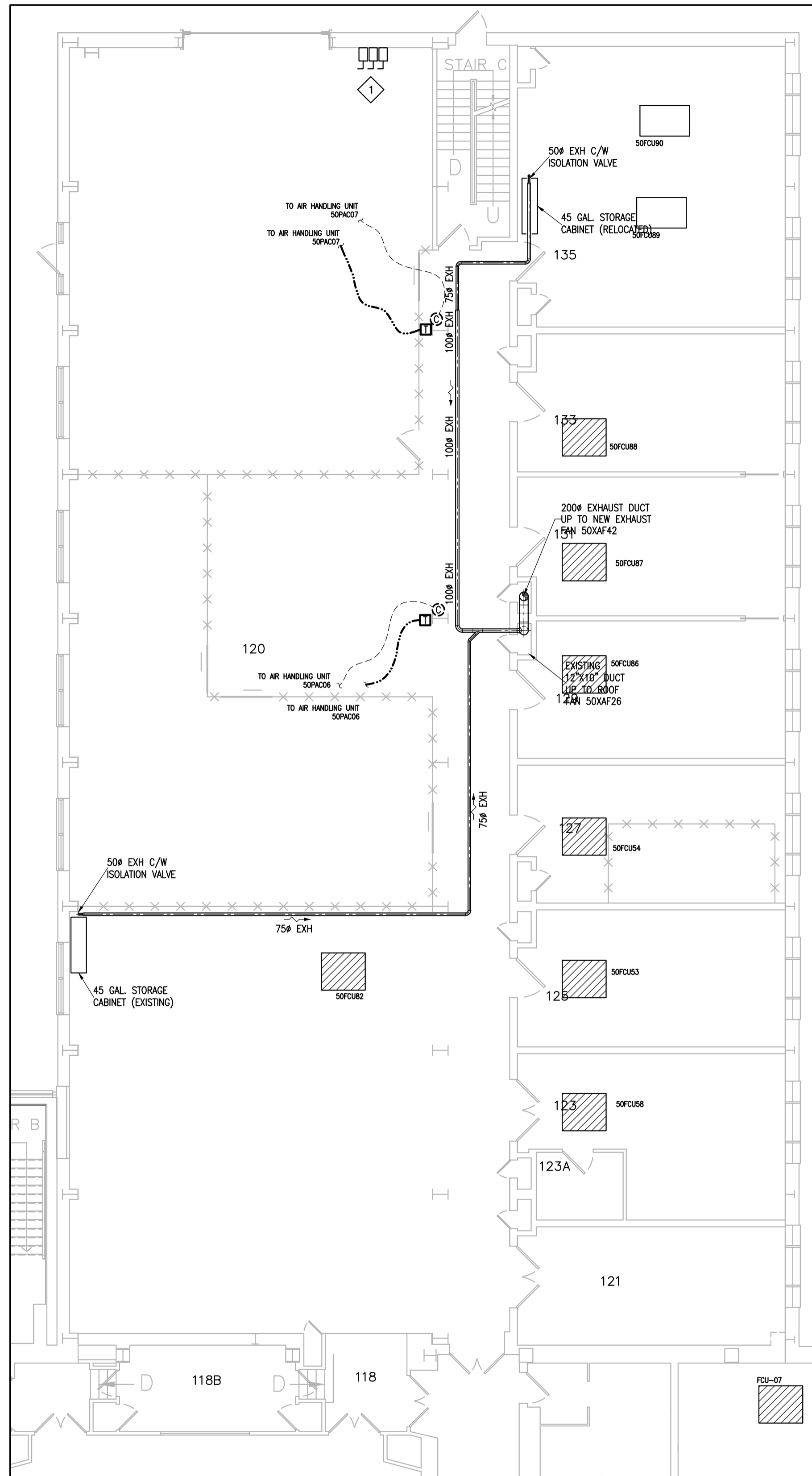


project
BUILDING M-50- ELECTRICAL HIGH BAY ROOF TOP UNITS REPLACEMENTS

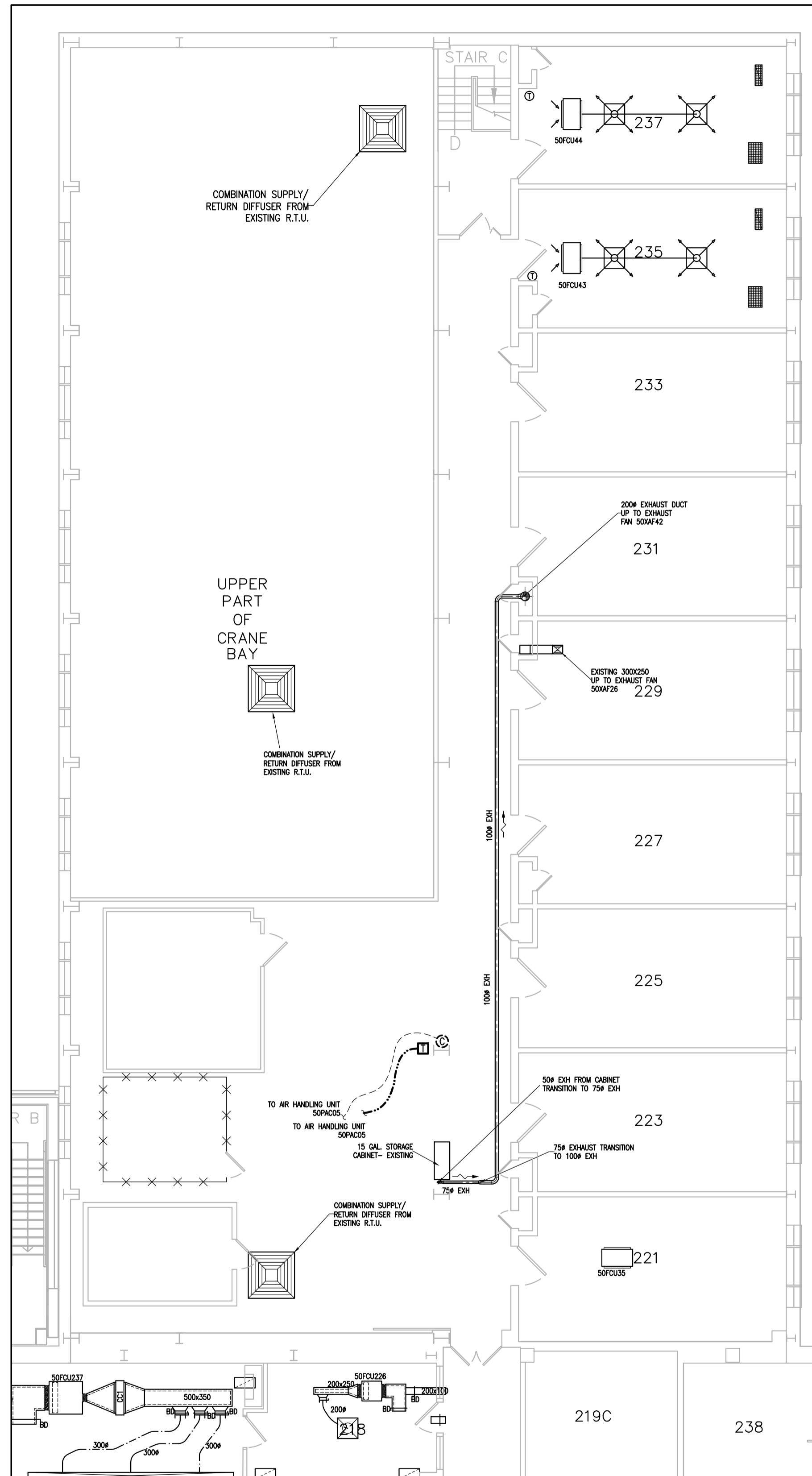
MONTREAL ROAD CAMPUS
 drawing
PARTIAL ROOF PLAN- MECHANICAL AND ELECTRICAL NEW WORK AND DEMOLITION

designed	JWG/DF	conçu	date	JAN 2014	date
drawn	JWG/DF	dessiné	scale	AS INDICATED	échelle
checked	---	vérifié	sheet	1 of/de 3	feuille
approved	BV	approuvé	W.O.no.	A1-000506-42	D.T.no.

dwg.no. 3873-G01 dessin no.



1
G02
BUILDING M-50- HIGH BAY- GRND FLR- PART PLAN
ELECTRICAL AND MECHANICAL REWORK
SCALE: 1:100



2
G02
BUILDING M-50- HIGH BAY- 2ND FLR- PART PLAN
ELECTRICAL AND MECHANICAL REWORK
SCALE: 1:100

MECHANICAL NOTES: (X)

1. DISCONNECT, REMOVE AND DISPOSE OFF SITE EXISTING ROOF TOP UNIT CONTROLLERS AND ASSOCIATED CONTROL WIRING.
2. PROVIDE NEW LOCAL TEMPERATURE SENSOR AND WIRING AS INDICATED. REFER TO SPECIFICATIONS FOR ADDITIONAL INFORMATION. DIRECT ENERGY TO PROVIDE ALL TEMPERATURE SENSORS AND CONTROL.

ELECTRICAL NOTES: (X)

1. REMOVE WIRE & CONDUIT FROM EXISTING ROOFTOP UNITS BACK TO DISCONNECTS IN THIS LOCATION. MARK DISCONNECTS AS SPARE.



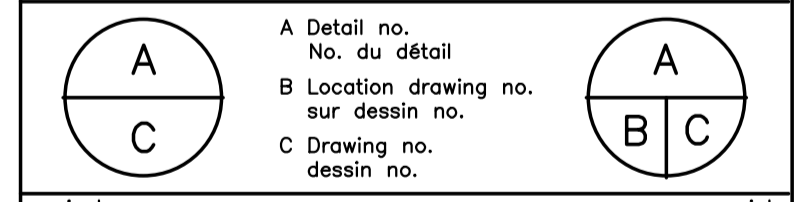
GENERAL NOTES

- CONTRACTORS TO CHECK AND VERIFY ALL DIMENSIONS ON SITE PRIOR TO DEMOLITION OR CONSTRUCTION AND REPORT ANY ERRORS OR OMISSIONS TO DEPARTMENTAL REPRESENTATIVE.
- CONTRACTORS MUST VISIT THE SITE & FULLY FAMILIARIZE THEMSELVES WITH THE SCOPE OF THE WORK.
- PREVENT THE SPREAD OF DUST & DEBRIS BEYOND THE WORK AREA AND CLEAN ALL SURFACES AT COMPLETION.
- MAKE GOOD ALL SURFACES AFFECTED BY THIS WORK.
- COORDINATE ALL SHUTDOWNS WITH THE DEPARTMENTAL REPRESENTATIVE.
- PROVIDE ALL LABOUR AND MATERIAL REQUIRED TO FORM A COMPLETE, FUNCTIONAL SYSTEM AS DESCRIBED ON DRAWINGS.

No.	Date	Revision	By:
0	JAN. 2014	ISSUED FOR TENDER	JWG

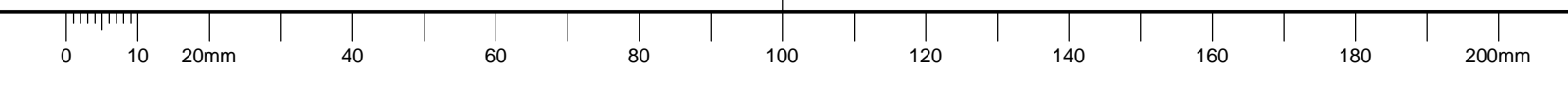
Date Printed DD MM YYYY Date imprimée

- o Verify all dimensions and site conditions and be responsible for same
- o Vérifier toutes les dimensions et l'état des lieux et en assumer la responsabilité



project
BUILDING M-50- ELECTRICAL HIGH BAY ROOF TOP UNITS REPLACEMENTS
project
MONTREAL ROAD CAMPUS
drawing
PARTIAL FLOOR PLANS- MECHANICAL AND ELECTRICAL NEW WORK AND DEMOLITION
dessin

designed	conçu	date	date
JWG/DIF		JAN 2014	
drawn	dessiné	scale	échelle
JWG/DIF		AS INDICATED	
checked	vérifié	sheet	feuille
--		2 of/de 3	
approved	approuvé	W.O.no.	D.T.no.
BV		A1-000506-42	
dwg.no.	dessin no.		
3873-G02			



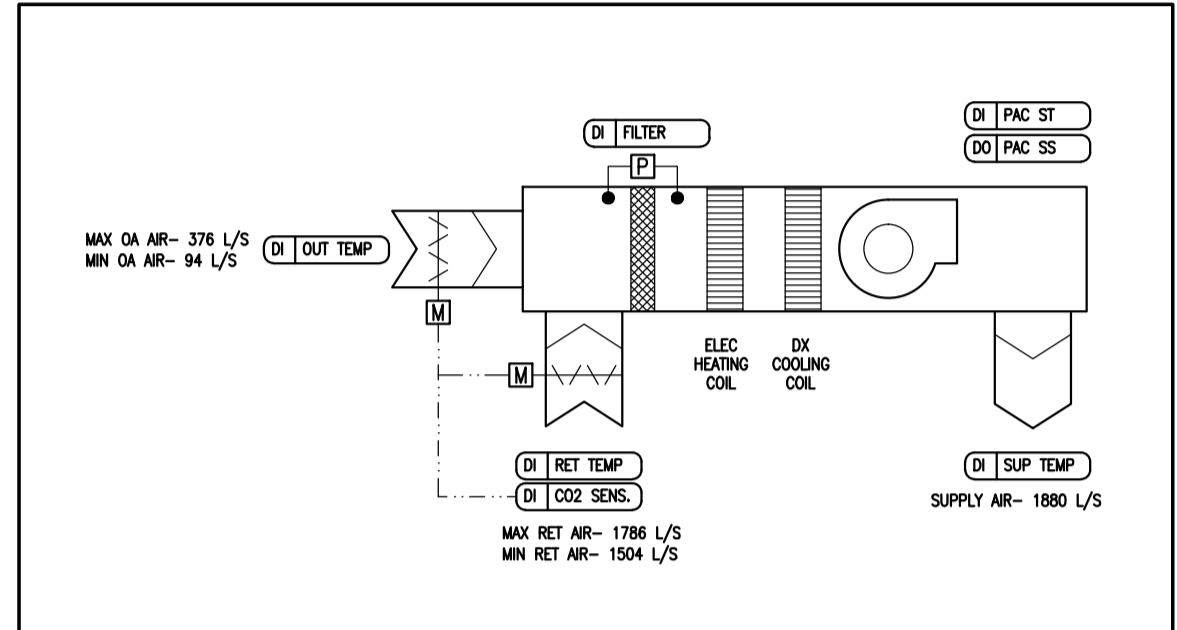


GENERAL NOTES

- CONTRACTORS TO CHECK AND VERIFY ALL DIMENSIONS ON SITE PRIOR TO DEMOLITION OR CONSTRUCTION AND REPORT ANY ERRORS OR OMISSIONS TO DEPARTMENTAL REPRESENTATIVE.
- CONTRACTORS MUST VISIT THE SITE & FULLY FAMILIARIZE THEMSELVES WITH THE SCOPE OF THE WORK.
- PREVENT THE SPREAD OF DUST & DEBRIS BEYOND THE WORK AREA AND CLEAN ALL SURFACES AT COMPLETION.
- MAKE GOOD ALL SURFACES AFFECTED BY THIS WORK.
- COORDINATE ALL SHUTDOWNS WITH THE DEPARTMENTAL REPRESENTATIVE.
- PROVIDE ALL LABOUR AND MATERIAL REQUIRED TO FORM A COMPLETE, FUNCTIONAL SYSTEM AS DESCRIBED ON DRAWINGS.

AIR HANDLING UNIT SCHEDULE																					
TAG	LOCATION	SUPPLY			COOLING COIL CAPACITIES				HEATING CAPACITIES			HUMIDIFIER			REMARKS						
		AIR FLOW TOTAL	AIR FLOW MAX RET.	AIR FLOW MAX OUT.	S.P. (Pa)	FILTER (MM)	T.C. (KW)	S.C. (KW)	EDBT	EWBT	LDBT	CAPACITY (KW)	EDBT	P.D. (Pa)		LDBT	KG/HR	INJECTOR TYPE	MOTOR (H.P.)	FLA/MCA/MOC	V/P/HZ
50PAC05	ROOF	1880 L/S	1786 L/S	376 L/S	250	50	35.1	27.1	29.4°C	19.4°C	12.8°C	9.96	21.1°C	---	36°C	N/A	N/A	5	52/57/60	600/3/60	NEW
50PAC06	ROOF	1880 L/S	1786 L/S	376 L/S	250	50	35.1	27.1	29.4°C	19.4°C	12.8°C	9.96	21.1°C	---	36°C	N/A	N/A	5	52/57/60	600/3/60	NEW
50PAC07	ROOF	1880 L/S	1786 L/S	376 L/S	250	50	35.1	27.1	29.4°C	19.4°C	12.8°C	9.96	21.1°C	---	36°C	N/A	N/A	5	52/57/60	600/3/60	NEW
---	---	---	---	---	---	---	---	---	---	---	---	---	---	---	---	---	---	---	---	---	---

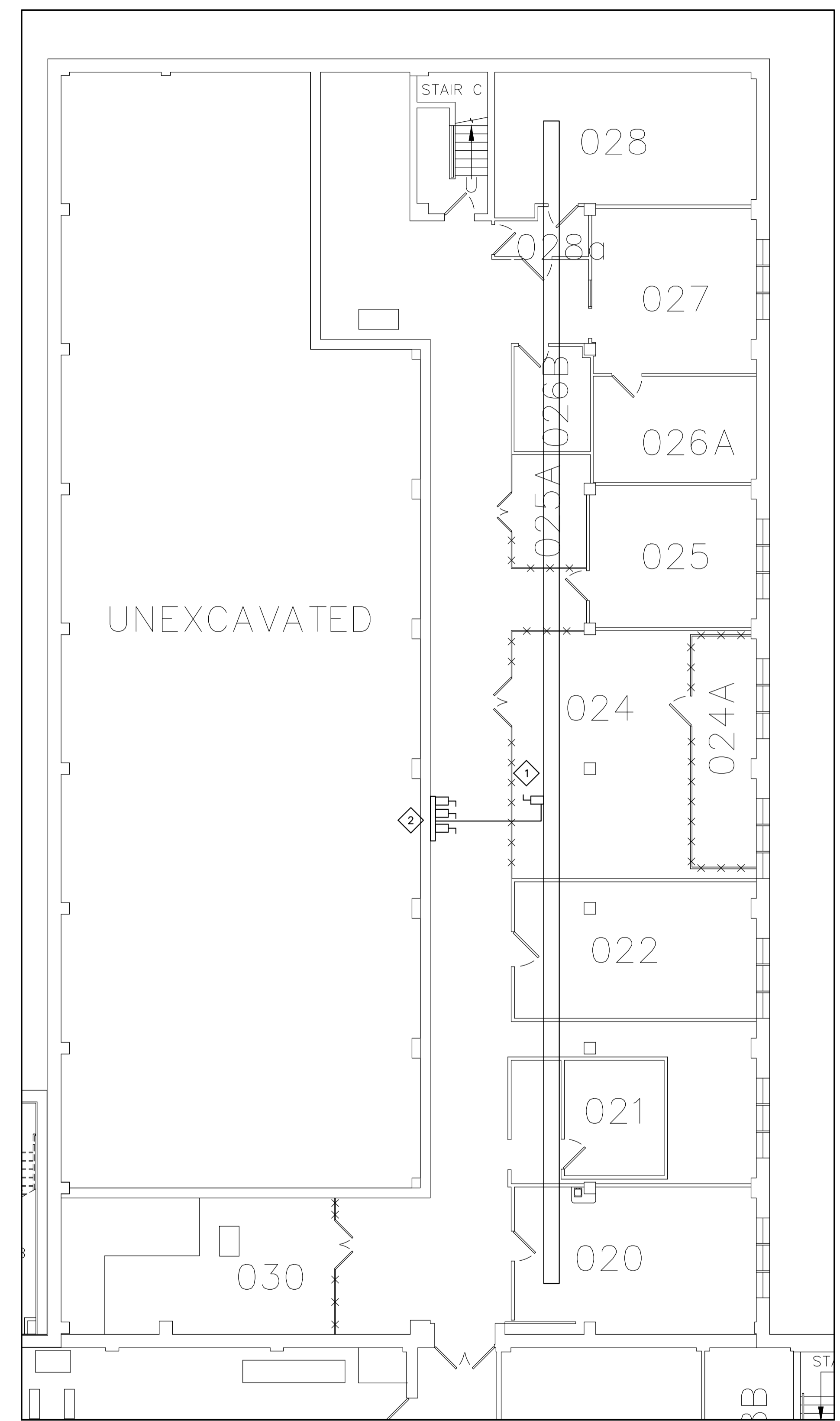
NOTE:
 1. NEW AIR HANDLING UNITS ARE BASED ON CARRIER MODEL 50HCB11 C/W DX COOLING COIL, ELECTRIC HEATING, NO HUMIDIFICATION AND TEMPERATURE SENSOR/ CONTROLLERS LOCATED AS INDICATED. PROVIDE CO2 SENSOR IN RETURN AIR FOR OUTDOOR AIR MODULATION.
 2. NEW AIR HANDLING UNIT CONTROLS ARE TO BE COMPATIBLE WITH BAS. REFER TO SPECIFICATIONS, SEQUENCE OF OPERATION AND DRAWINGS FOR ADDITIONAL INFORMATION.



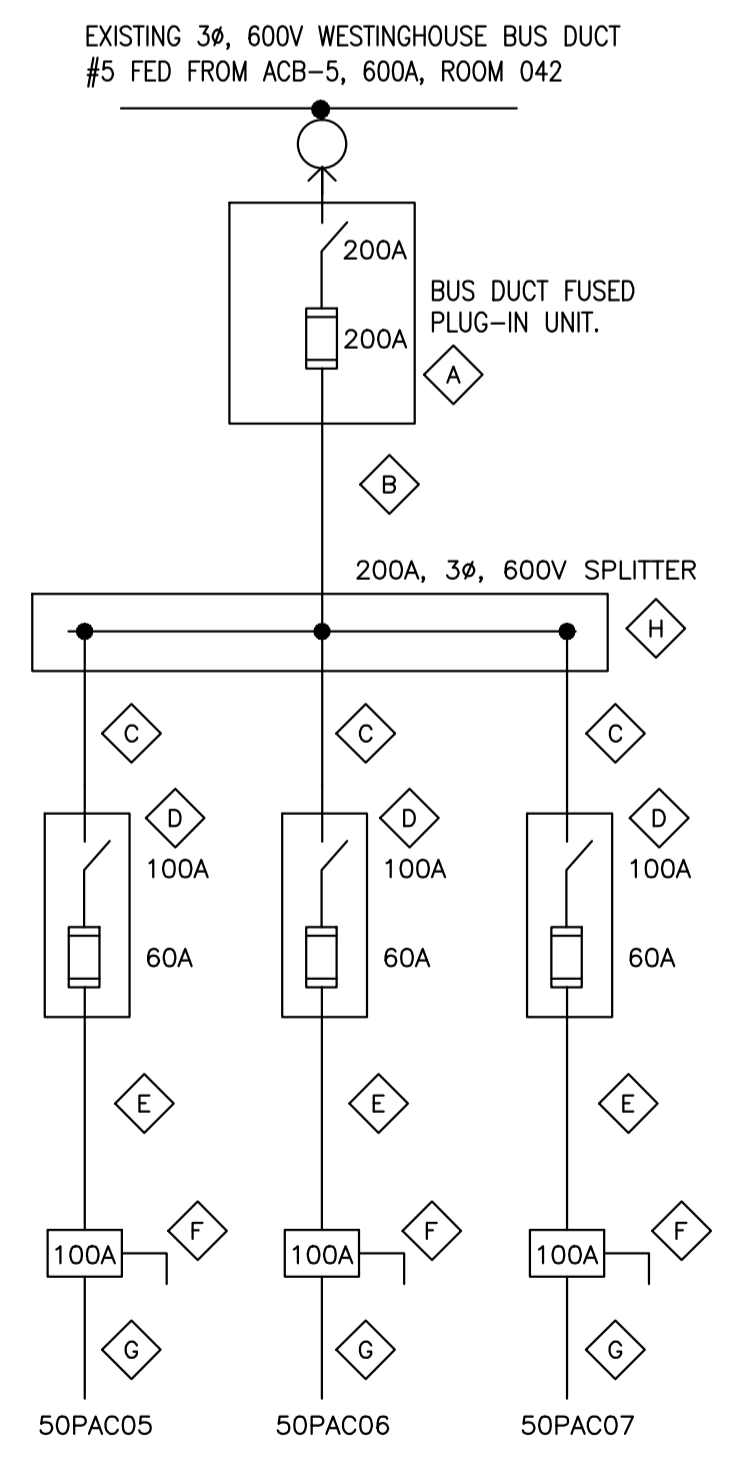
1
G03
ROOF TOP UNITS CONTROLS SCHEMATIC
 SCALE: N.T.S.

ELECTRICAL NOTES:

- EXISTING BUS DUCT #5. INSTALL NEW PLUG-IN UNIT IN THIS AREA.
- INSTALL SPLITTER AND DISCONNECTS FOR ROOFTOP UNIT IN THIS LOCATION.



2
G03
PARTIAL BASEMENT PLAN
 SCALE: 1:100



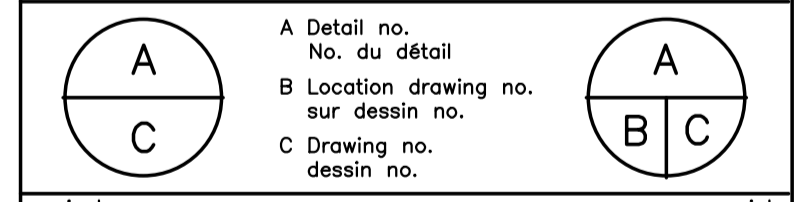
SINGLELINE NOTES:

PROVIDE THE FOLLOWING:
 A. 200A, 600V, 3ø BUS DUCT PLUG-IN UNIT FUSED AT 200A.
 B. 3x 3/0 + GROUND IN 53mm EMT.
 C. 3x #6 + GROUND IN 27mm EMT.
 D. 100A, 600V, 3ø FUSED DISCONNECT, FUSED AT 60A.
 E. 3x #6 + GROUND IN 27mm EMT. CONDUIT IS TO BE ROUTED SUCH THAT IT DOES NOT INTERFERE WITH THE EXISTING CRANE.
 F. 100A, 600V, 3ø DISCONNECT IN CSA TYPE 3R ENCLOSURE ATTACHED TO ROOFTOP UNIT.
 G. 3x #6 + GROUND IN 27mm LIQUID TIGHT FLEXIBLE CONDUIT.
 H. 200A, 600V, 3ø SPLITTER.
 WIRE, DISCONNECT AND FUSE SIZES ARE BASED ON THE SPECIFIED CARRIER UNIT. CONFIRM WIRE, DISCONNECT AND FUSE SIZES WITH NAMEPLATES OF ACTUAL ROOFTOP UNIT SUPPLIED PRIOR TO INSTALLATION.

3
G03
PARTIAL SINGLELINE
 SCALE: N.T.S.

0	JAN 2014	ISSUED FOR TENDER	JWG
No.	Date	Revision	By: Parc

- Verify all dimensions and site conditions and be responsible for same
- Vérifier toutes les dimensions et l'état des lieux et en assumer la responsabilité



project **BUILDING M-50- ELECTRICAL HIGH BAY ROOF TOP UNITS REPLACEMENTS** projet
 MONTREAL ROAD CAMPUS
 drawing **SCHEDULES AND DETAILS** dessin

designed	JWG/DF	conçu	date	JAN 2014	date
drawn	JWG/DF	dessiné	scale	AS INDICATED	échelle
checked	---	vérifié	sheet	3 of/de 3	feuille
approved	BV	approuvé	W.O.no.	A1-000506-42	D.T.no.

dwg.no. **3873-G03** dessin no.