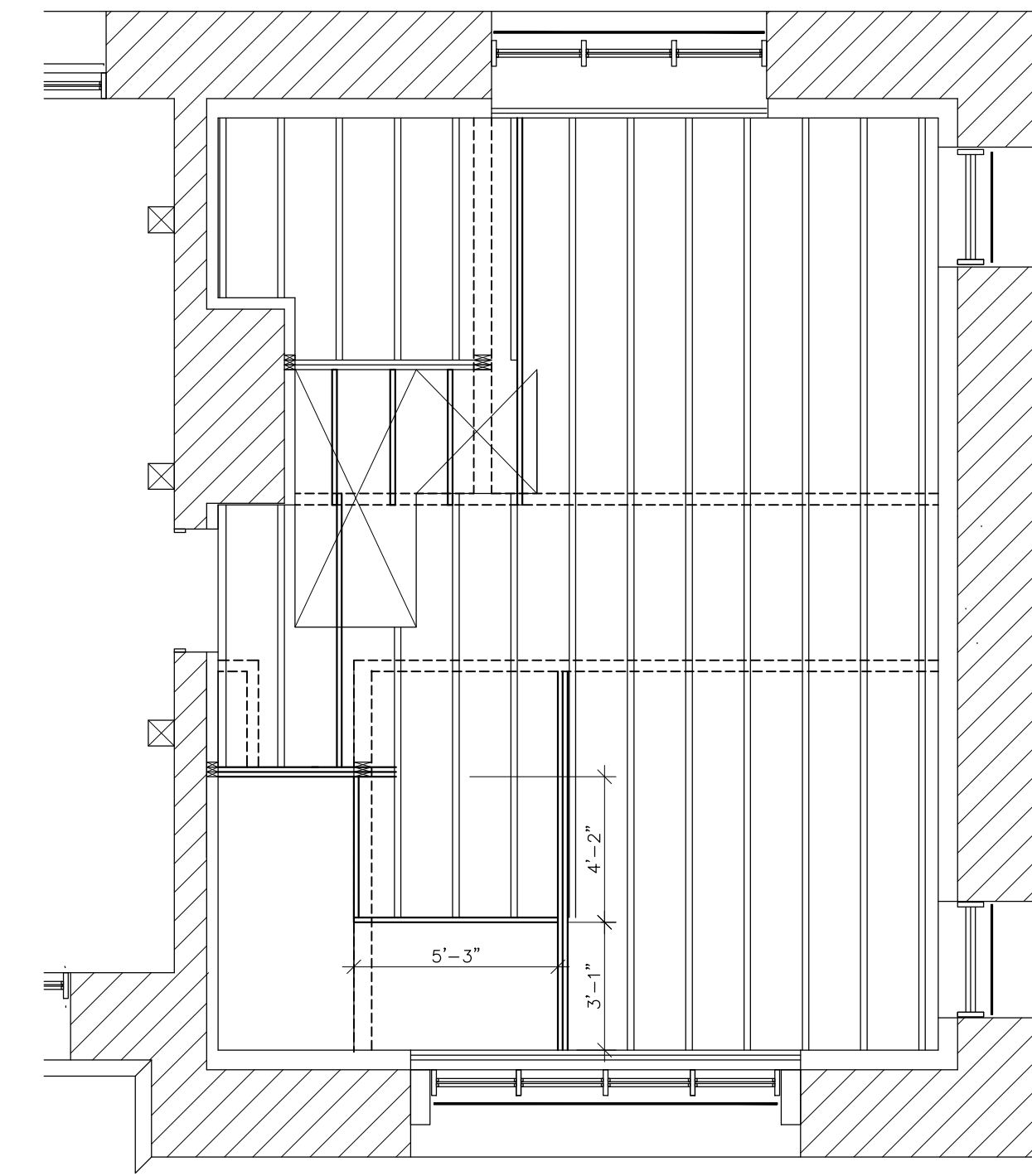
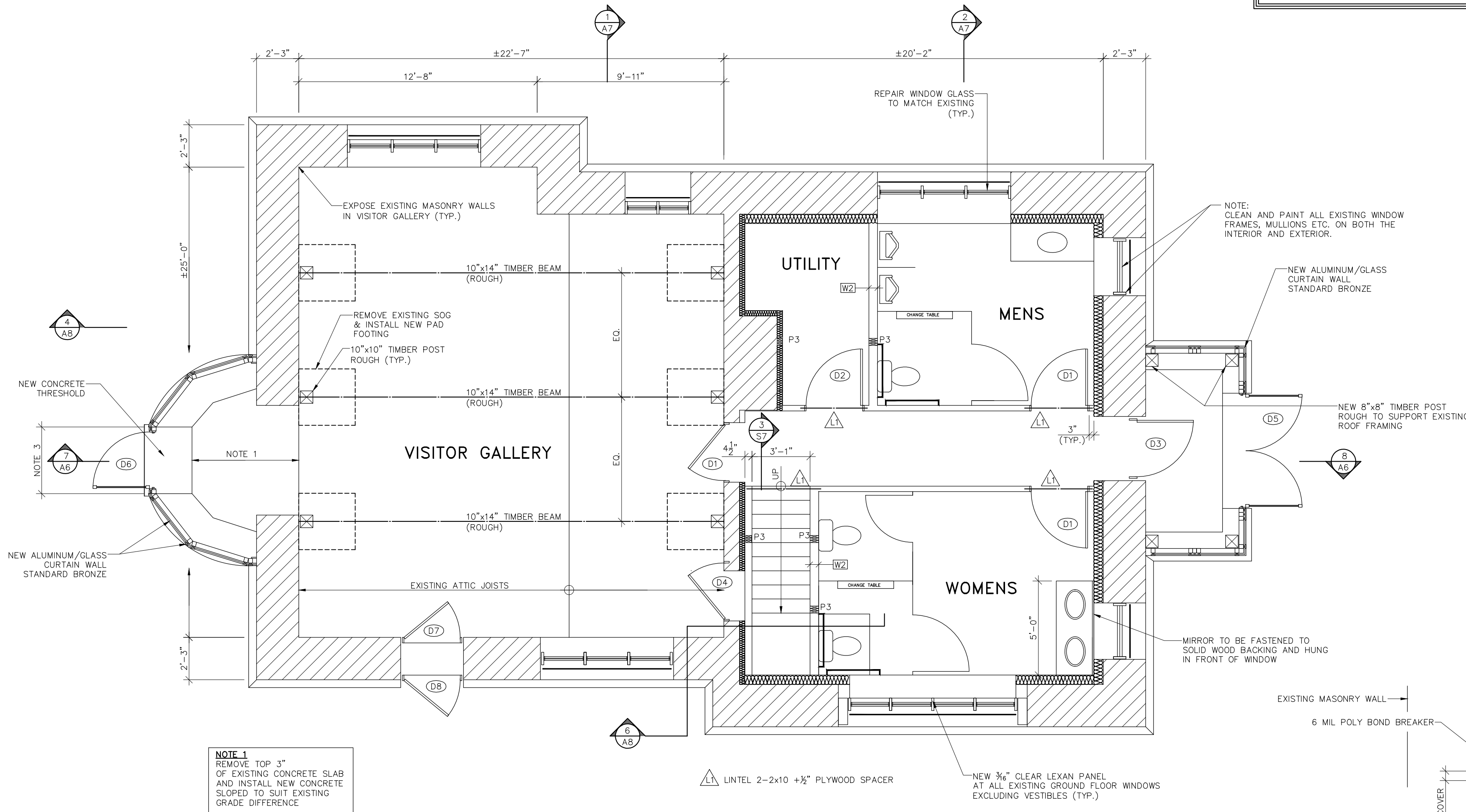


GROUND FLOOR PLAN - DEMOLITION

IMPORTANT NOTE
FASTENING ITEMS TO EXISTING MASONRY WALL IS EXPLICITLY FORBIDDEN UNLESS APPROVED BY DEPARTMENTAL REPRESENTATIVE IN WRITING PRIOR TO COMMENCING WORK



PARTIAL SECOND FLOOR - FRAMING PLAN



GROUND FLOOR PLAN - NEW CONSTRUCTION

TYPICAL PAD FOOTING

WALL SCHEDULE (W#)	
MARK	DESCRIPTION
W1	- 1/2" DRYWALL - 2x4 STUDS @ 16" c/c - 3 1/2" ROXUL SOUND INSULATION - 1/2" PLYWOOD SHEATHING* - 6mil VAPOUR BARRIER (EXTERIOR) - 1/2" DRYWALL (MOULD RESISTANT)
W2	- 1/2" DRYWALL - 2x4 STUDS @ 16" c/c - 5 1/2" ROXUL SOUND INS. (EXTERIOR) - 1/2" PLYWOOD SHEATHING* - 6mil VAPOUR BARRIER (EXTERIOR) - 1/2" DRYWALL (MOULD RESISTANT)
	* 1/2" PLYWOOD BE INSTALLED AT INTERIOR OF WASHROOMS AND/OR UTILITY ROOM

DOOR SCHEDULE (D#)				
MARK	SIZE	QTY.	LOCATION	DESCRIPTION
D1	3'-0" x 6'-8"	2	WASHROOM ENTRANCE	- METAL INTERIOR + STEEL FRAME - PADDLE TYPE PASSAGE SET - AUTOMATIC DOOR OPENER C/W SWITCHES - HANDICAP WASHROOM SIGN O/F OF DOOR - VENTILATION LOUVER
D2	3'-0" x 6'-8"	1	UTILITY ROOM ENTRANCE	- METAL INTERIOR + STEEL FRAME - PADDLE TYPE PRIVACY SET - DOOR CLOSER - VENTILATION LOUVER
D3	3'-0" x 6'-8"	1	REAR VESTIBULE	- METAL INTERIOR + STEEL FRAME - PADDLE TYPE PASSAGE SET + PANIC BAR - AUTOMATIC DOOR OPENER C/W SWITCHES - TEMPERED GLASS WINDOW TOP AND BOTTOM - TRANSOM WINDOW
D4	3'-0" x 3'-3"	1	STORAGE	- METAL INTERIOR + STEEL FRAME - KNOB TYPE LOCK SET - VENTILATION LOUVER
D5	3'-0" x 7'-0"	2	NORTH VESTIBULE	- CANADIANA 200B PR DOOR BY ALUMICOR - PADDLE TYPE LOCK SET - AUTOMATIC DOOR OPENER C/W SWITCHES - PANIC BAR INTERIOR
D6	3'-0" x 7'-0"	1	SOUTH VESTIBULE	- CANADIANA 200B DOOR BY ALUMICOR - PADDLE TYPE LOCK SET - AUTOMATIC DOOR OPENER C/W SWITCHES - PANIC BAR INTERIOR
D7	XXXX	1	EAST GALLERY	- NEW SOLID WOOD DOOR & FRAME TO MATCH EXISTING - PADDLE TYPE LOCK SET - AUTOMATIC DOOR OPENER C/W SWITCHES - PANIC BAR INTERIOR
D8	XXXX	1	EAST GALLERY	- NEW SOLID WOOD DOOR & FRAME TO MATCH EXISTING - PADDLE TYPE LOCK SET - PANIC BAR INTERIOR

FOR GENERAL NOTES
REFER TO DRWG S1

no.	date	description
13.01.14		ISSUED FOR TENDER
06.01.14		ISSUED FOR 90% REVIEW
18.12.13		ISSUED FOR REVIEW

Client Acceptance / Acceptation du client
Signature _____ Date _____
File No. / No. de dossier _____



Ontario Waterways Field Unit - Rideau Canal NHS
Canada

Type of Record / Type d'enregistrement
TYPE

Project title / Titre du projet
**RIDEAU CANAL NHS
OTTAWA LOCK CONTROL
BUILDING RENOVATION**

Drawing title / Titre du dessin
**GROUND FLOOR PLAN
DEMOLITION
NEW CONSTRUCTION
PARTIAL SECOND FLOOR**

Scale / Echelle
SCALE

Drawn by / Dessiné par
W.J.L. 10.12.13

Field Recording by / Relevé-terrain par
Date

Approved by / Approuvé par
Date

Checked by / Vérifié par

Project No./No. du projet Asset No. 00102 Sheet No./Feuille No.

Drawing No./No. du Dessin **A2**