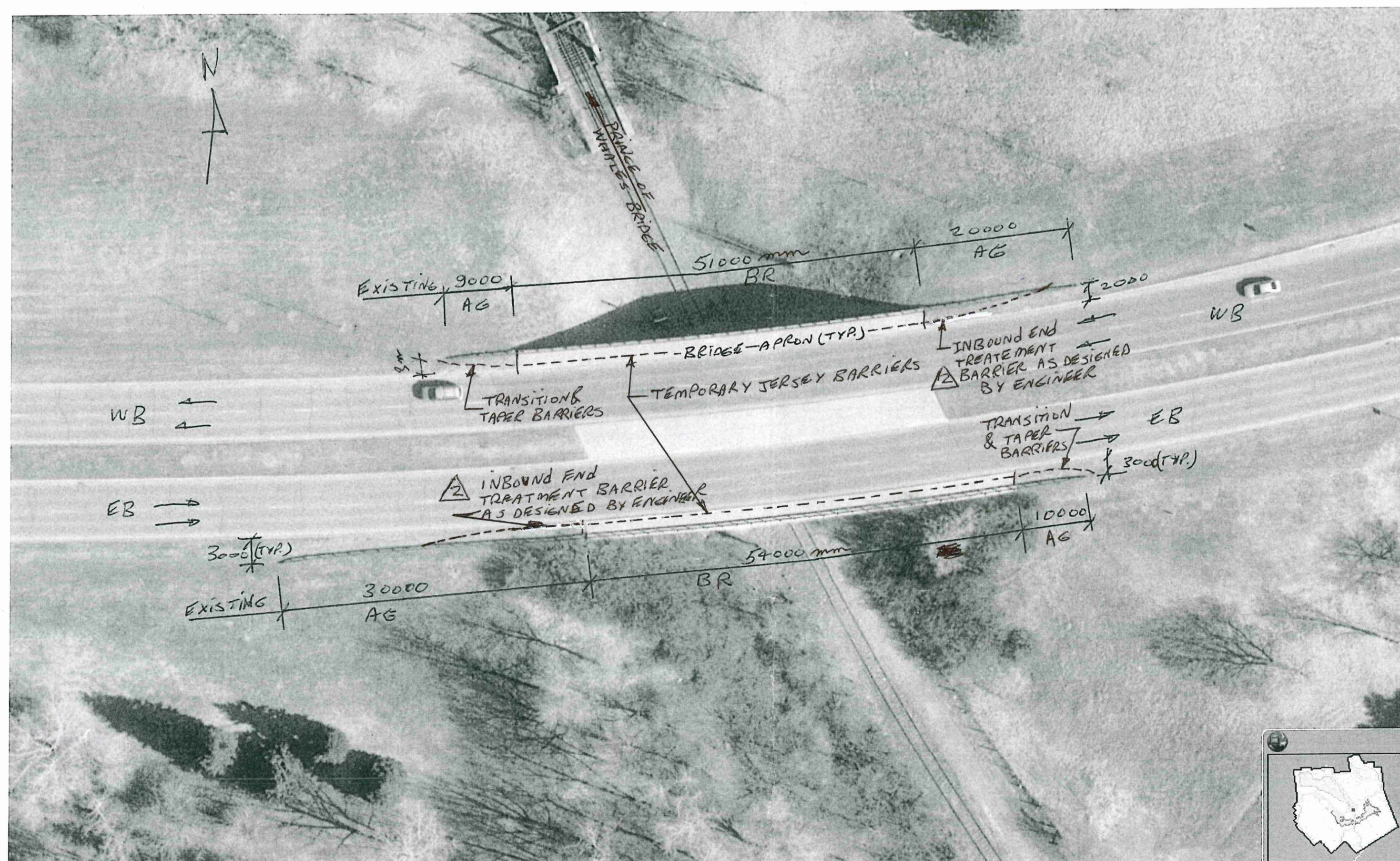




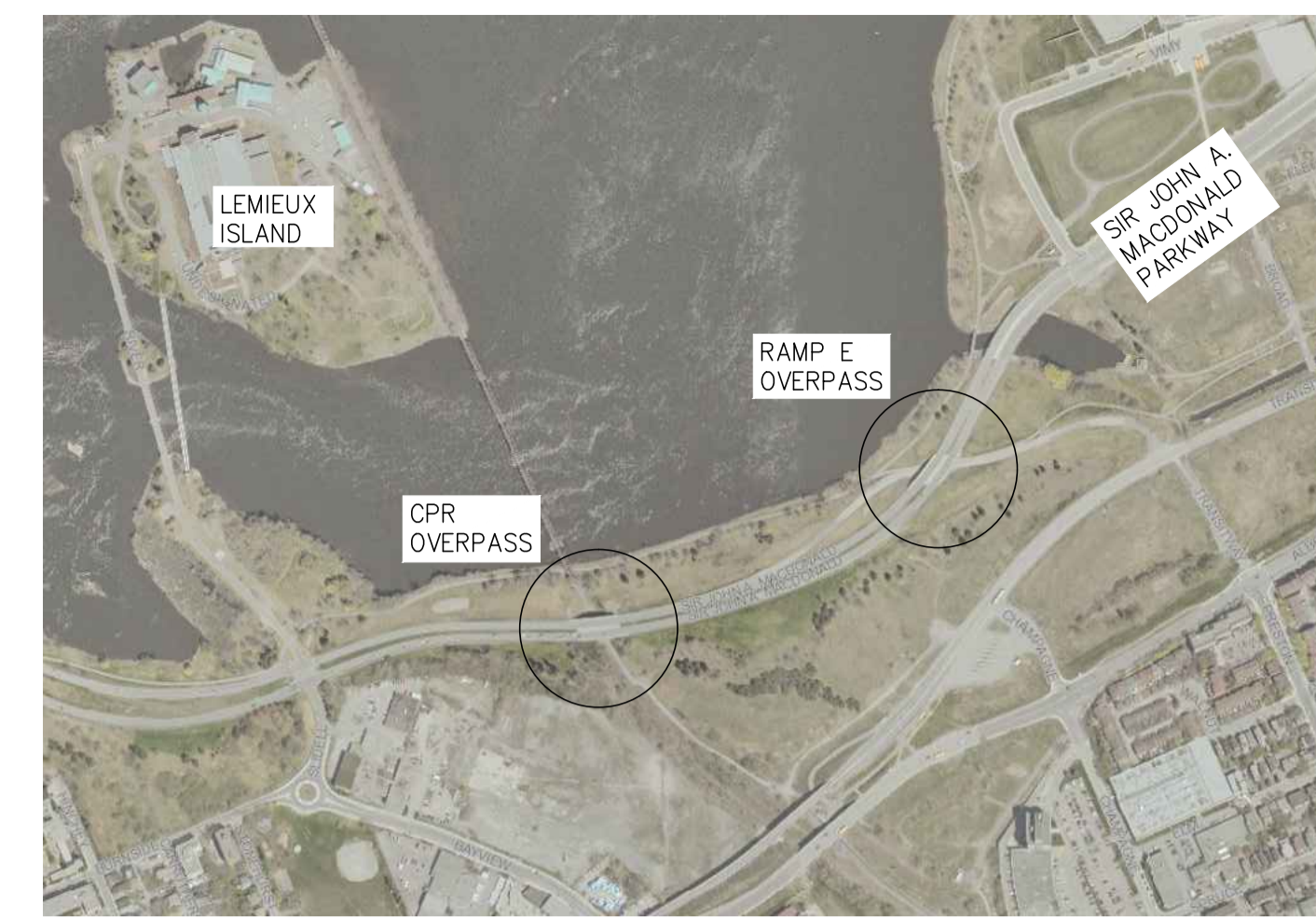
John A. Macdonald Parkway - Ramp E Structure

LEGEND : AG : APPROACH GUARDRAIL (EXISTING) BR : BRIDGE RAILINGS & APRONS



John A. Macdonald Parkway - CPR Structure (O Train near Bayview)

LEGEND : AG : APPROACH GUARDRAILS (EXISTING) BR : BRIDGE RAILINGS & APRONS



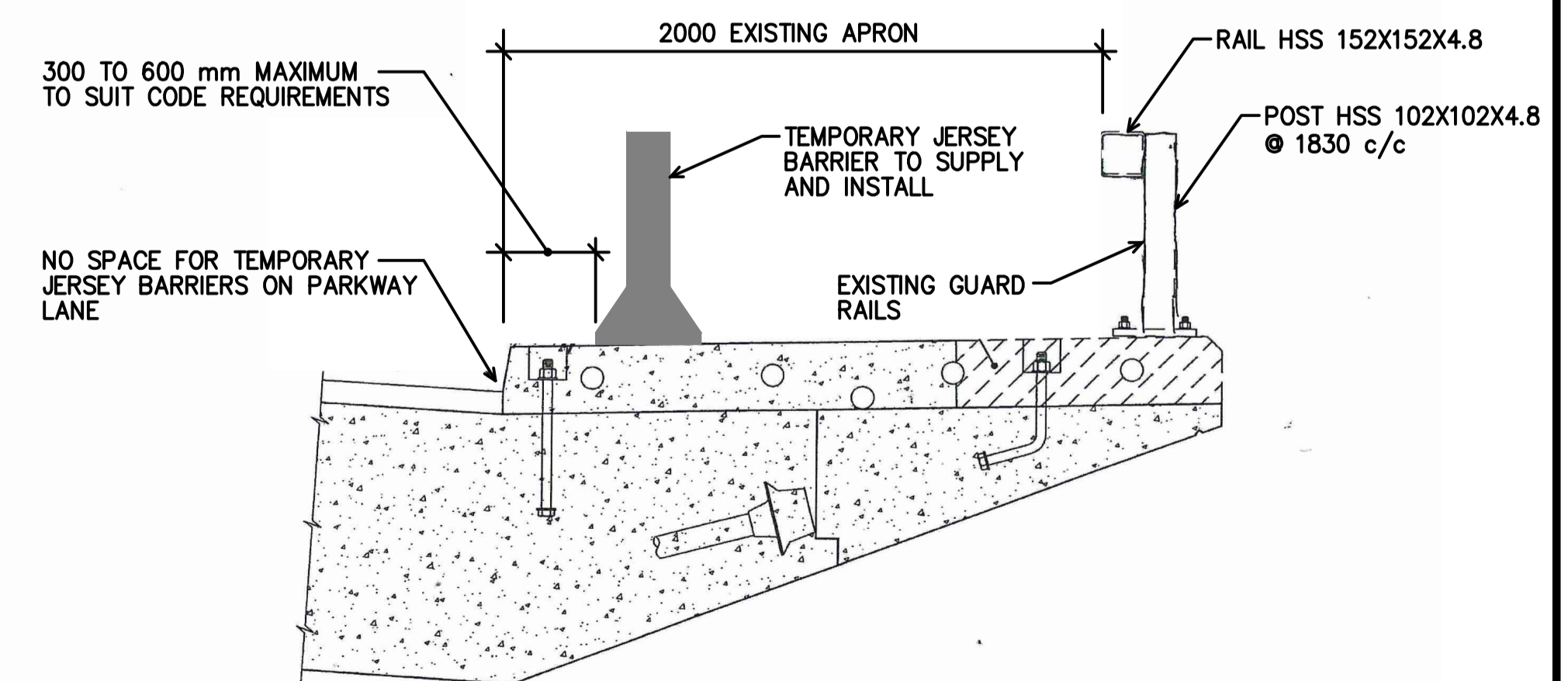
LOCATION OF SIR JOHN A. MACDONALD RAMP E AND CPR OVERPASS



RAMP E STRUCTURE LOOKING TOWARDS EAST



CPR STRUCTURE LOOKING TOWARDS WEST



SIR JOHN A. MACDONALD OVERPASS SECTION - EXISTING APRON ON BOTH SIDES OF BRIDGE

NOTES:
- THIS DRAWING IS TO BE READ IN CONJUNCTION WITH SPECIFICATIONS.
- POSTED SPEED LIMIT FOR SIR JOHN A. MACDONALD PARKWAY IS 60 KM/H.
- TYPES AND ARRANGEMENTS OF TEMPORARY JERSEY BARRIERS TO BE DESIGNED AND STAMPED PROOF BY A PROFESSIONAL ENGINEER THROUGH SUBMISSION OF SHOP DRAWINGS.

no.	description	date
2	ISSUED FOR RE-TENDER	JAN. 16, 2014
1	ISSUED FOR QUOTE	DEC. 3, 2013

project
proj

SIR JOHN A. MACDONALD PARKWAY
TEMPORARY JERSEY BARRIERS

drawing
dessin

RAMP E AND CPR STRUCTURES

approved by
approuvé par B. REID
designed by
conçu par B. REID
drawn by
dessiné par M. VILLENEUVE
date NOVEMBER 2013 scale échelle N.T.S.
NCC project no. sheet no.
no. du projet de la CCN no. de la feuille
DC5205-11 TJB-1

January 16 11:58:09 PM
 C:\Users\miron\Documents\Projects\DC5205\DC5205-11\DC5205-11.dwg
 National Capital Commission - Commission de la capitale nationale