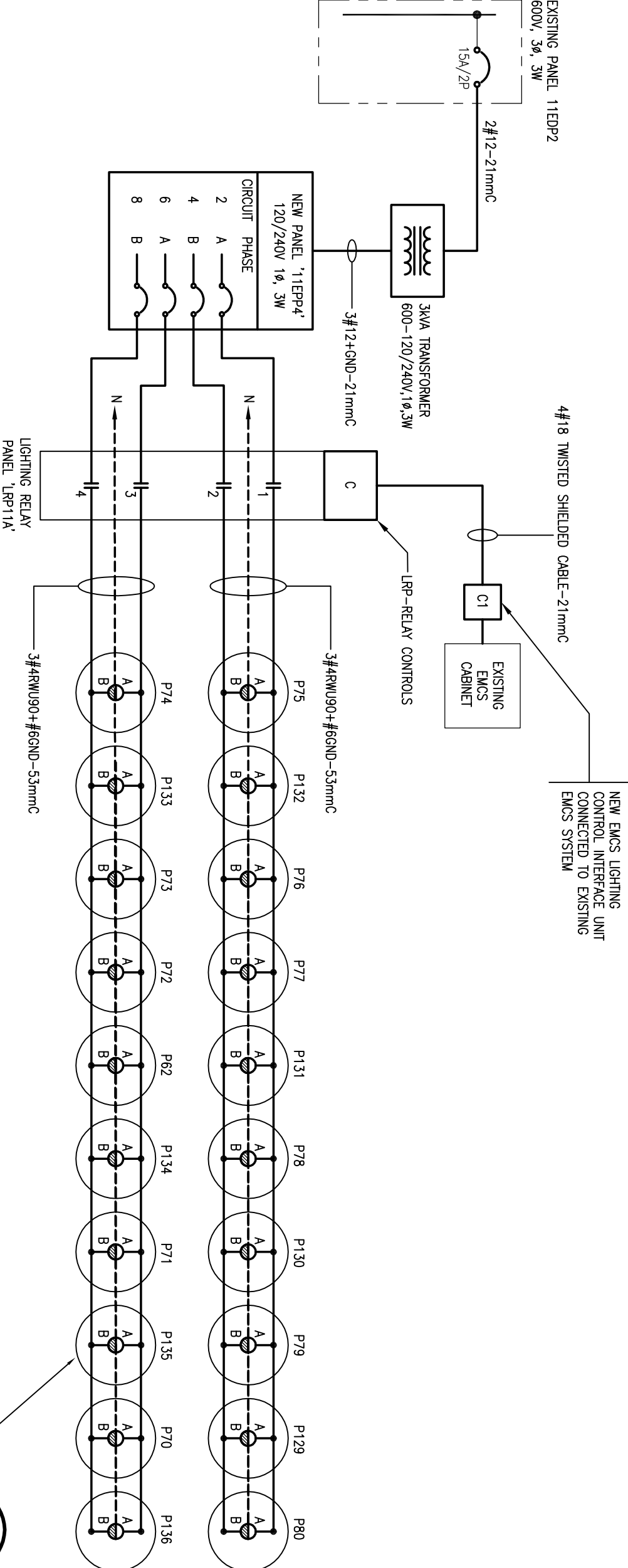
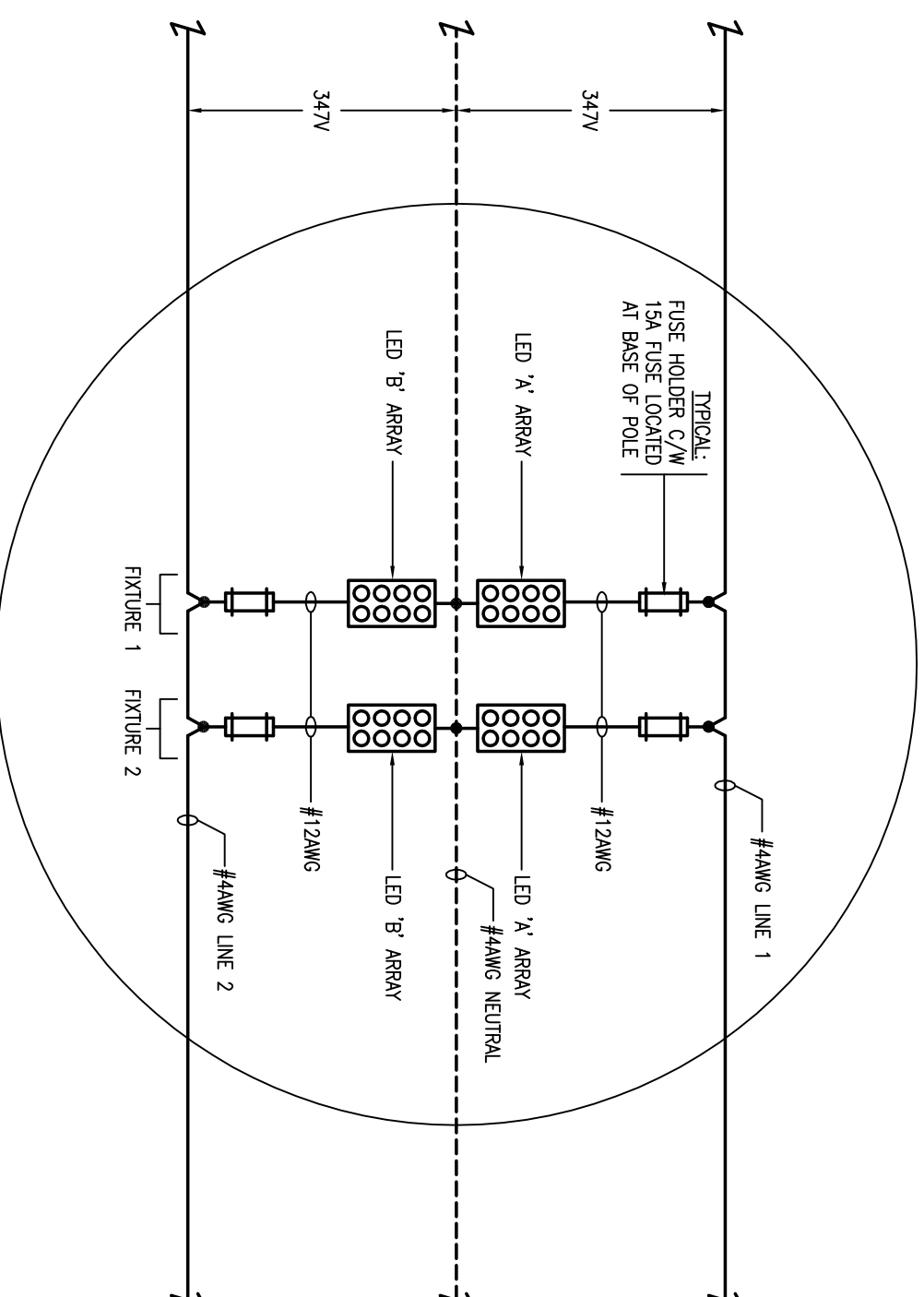


1 BUILDING WW19 - PERIMETER FLOOD LIGHTING POWER AND CONTROL SCHEMATIC

E3/E10 N.T.S.

4 PERIMETER FLOOD LIGHTING WIRING SCHEMATIC DETAIL

E10/E10 N.T.S.

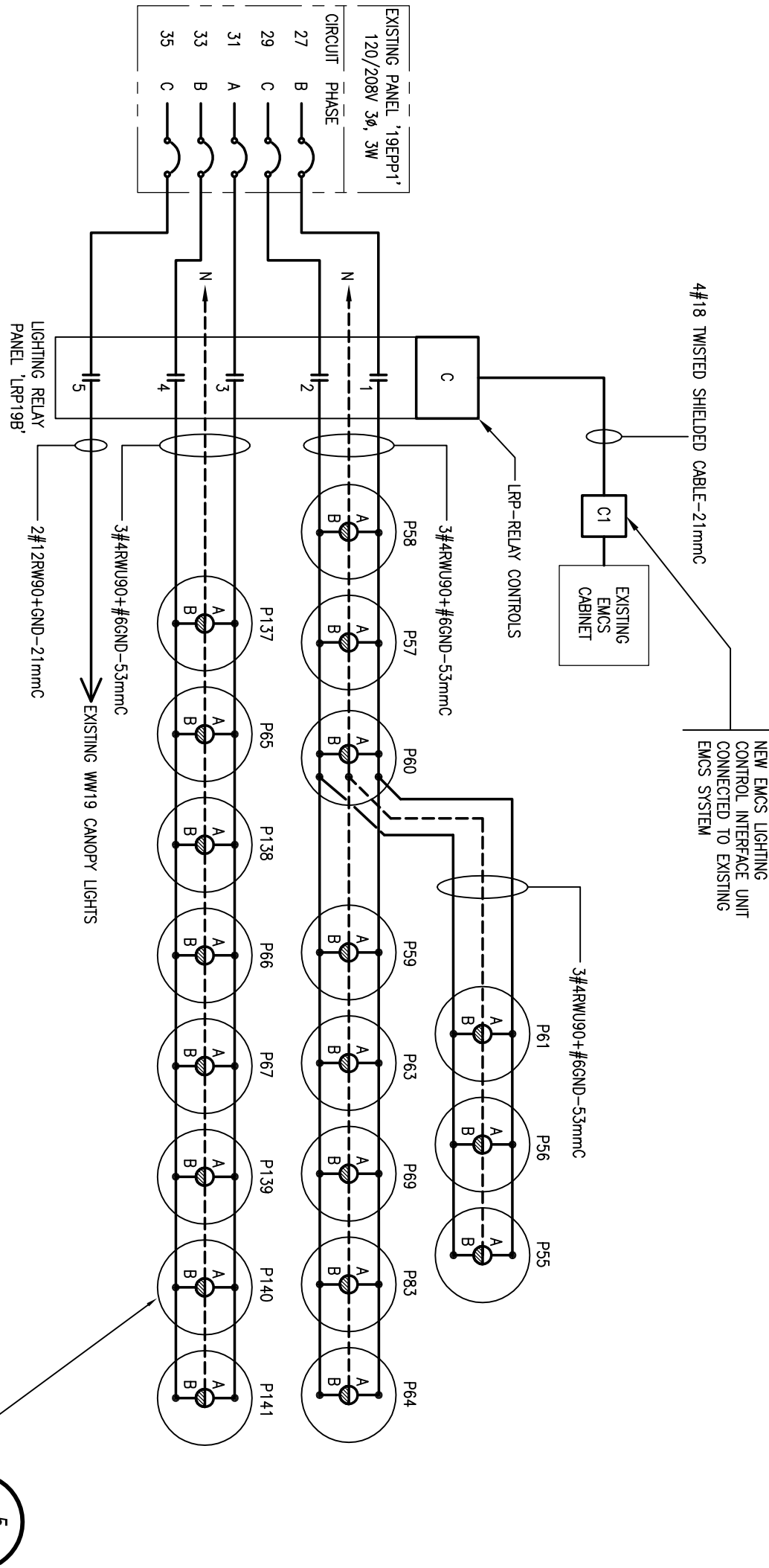
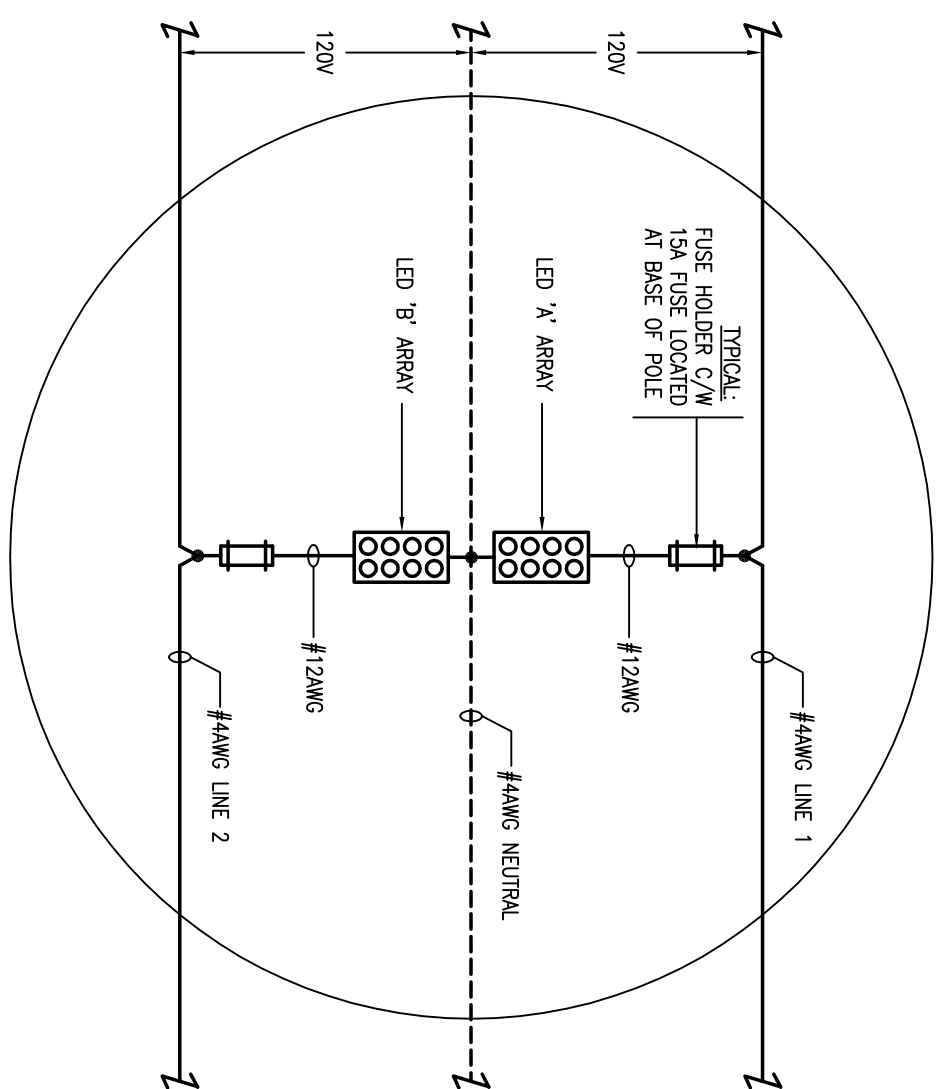


2 BUILDING WW11 - ROADWAY LIGHTING POWER AND CONTROL SCHEMATIC

E3/E10 N.T.S.

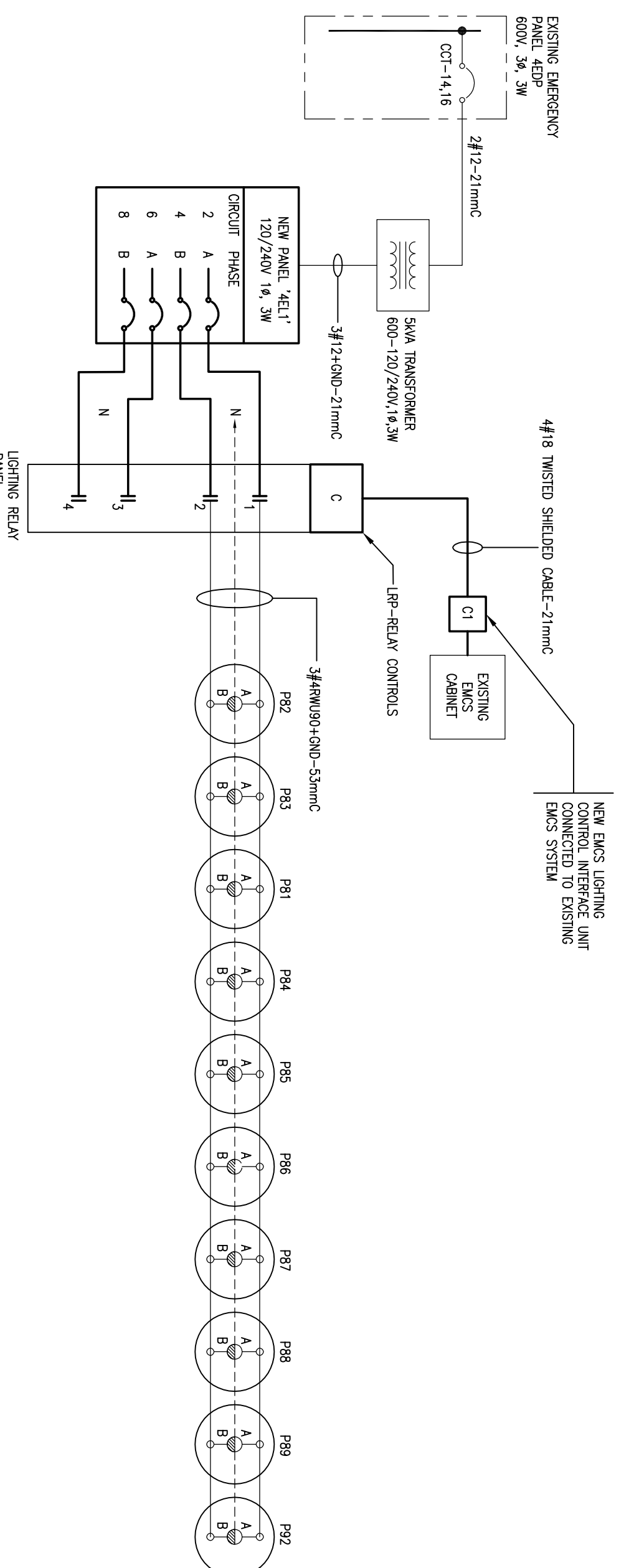
5 ROADWAY LIGHTING WIRING SCHEMATIC DETAIL

E10/E10 N.T.S.



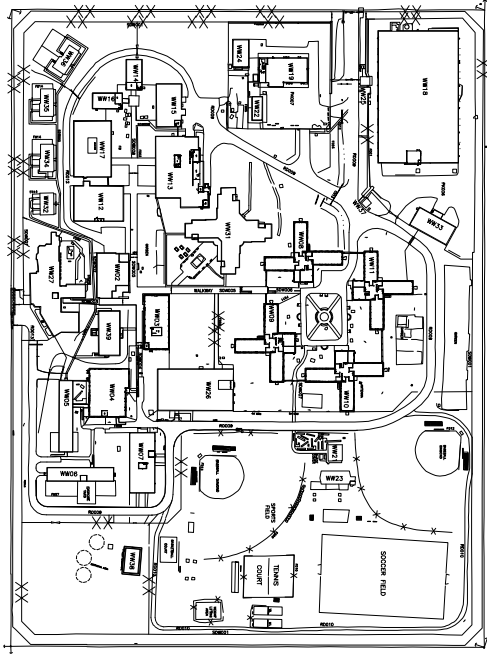
3 BUILDING WW19 - ROADWAY LIGHTING POWER AND CONTROL SCHEMATIC

E2/E10 N.T.S.



6 BUILDING WW04 - ROADWAY LIGHTING POWER AND CONTROL SCHEMATIC

E2/E10 N.T.S.



KEY PLAN



GOODKEY WEEDMARK & ASSOCIATES LIMITED
1688 Woodward Dr.
613 727-5111 Voice
613 727-5113 Fax
www.gwac.com Web
GMA# # 2013-171



| | | |
|--|----------------|------------|
| | | |
| | | |
| | | |
| | | |
| | | |
| 01 | ISSUED FOR BID | 2014/01/16 |
| revision | | date |
| Verify all dimensions and conditions on site and immediately notify the engineer of all discrepancies. | | |

| | |
|---|-------------------------------------|
| A | Detail No. |
| B | drawing no. - where detail required |
| C | drawing no. - where detail ends |
| C | drawing no. - where detail ends |

WORKWORTH
CORRECTIONAL SERVICE CANADA
WORKWORTH INSTITUTION
15847 COUNTRY ROAD 29, CAMBELLFORD
LIGHTING ENHANCEMENT
INNER PERIMETER

POWER AND CONTROL SCHEMATIC DETAILS

| | |
|----------------|--------------|
| drawn by | F. SALAH |
| designe par | F. SALAH |
| designed by | W. NEEDHAM |
| approved by | M. FONTYN |
| approved par | M. FONTYN |
| submitted by | K. HAQUE |
| submitted par | K. HAQUE |
| project date | 2013-08-30 |
| date du projet | 2013-08-30 |
| project no. | R.060989.001 |
| no. du projet | R.060989.001 |
| drawing no. | E10 OF 11 |
| dessiné no. | E10 OF 11 |