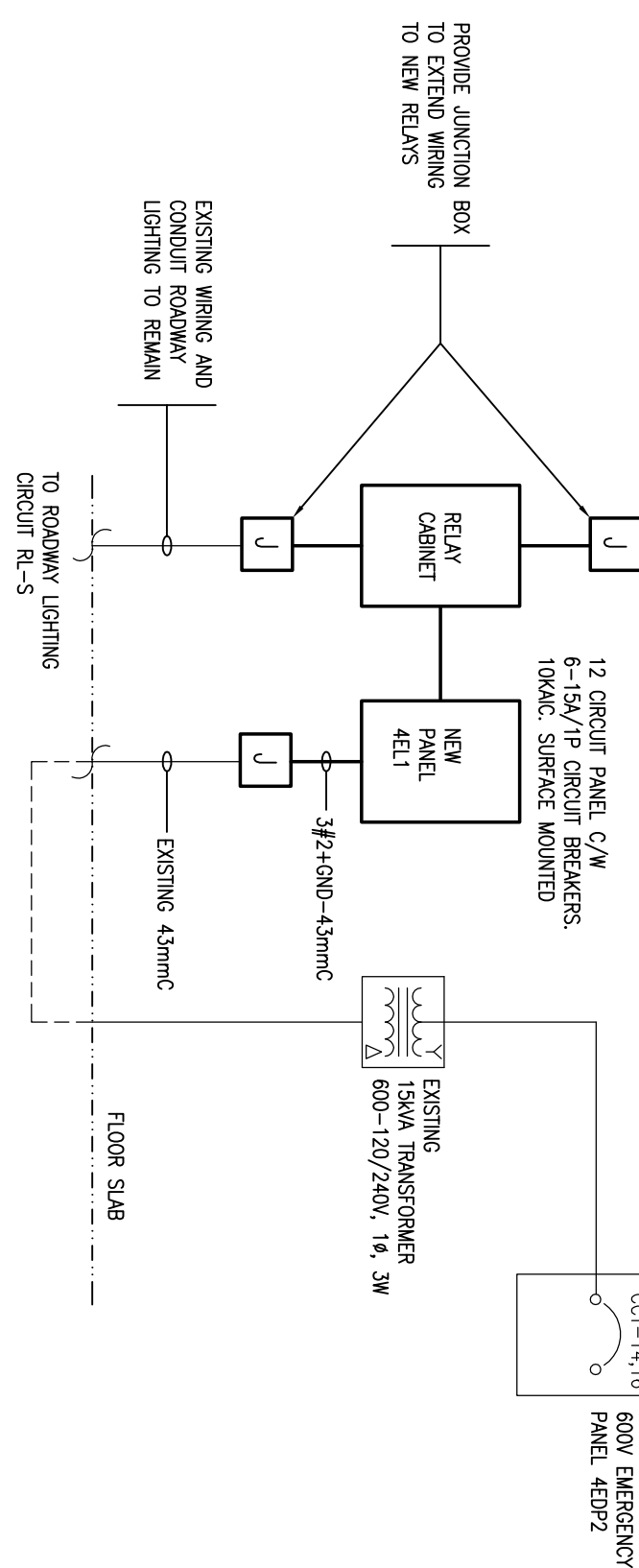


ELECTRICAL FLOOR PLANS
BUILDING WW 02, 04, 27

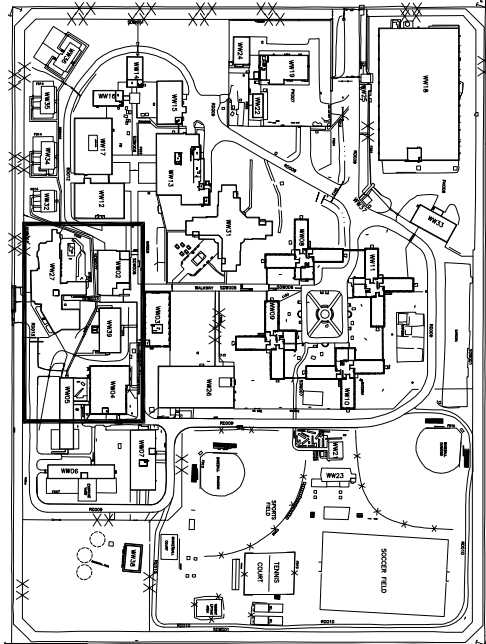


NOTE: REMOVE EXISTING 60A/2P SECONDARY DISCONNECT SWITCH AND 2 POLE A/C CONTACTOR AND TIME CLOCK AND REPLACE WITH NEW PANEL AND RELAY PANEL AS INDICATED.

DRAWING NOTES

- 1 PROVIDE A FOUR (4) RELAY CABINET C/W FOUR (4) 20A/1P RELAYS AND CONNECT TO EXISTING LIGHTING CIRCUITS (TRACE EACH TO BUILDING WALL PACKS AND WALKWAY WALL PACKS, 3RD AND 4TH RELAYS ARE SPARE).
- 2 PROVIDE A FOUR (4) RELAY CABINET C/W FOUR (4) 20A/1P RELAYS AND CONNECT TO EXISTING LIGHTING CIRCUITS (TRACE EACH TO BUILDING WALL PACKS AND WALKWAY WALL PACKS, 3RD AND 4TH RELAYS ARE SPARE).
- 3 PROVIDE A FOUR (4) RELAY CABINET C/W FOUR (4) 20A/1P RELAYS AND CONNECT TO EXISTING LIGHTING CIRCUITS (TRACE EACH TO BUILDING WALL PACKS AND WALKWAY WALL PACKS, 3RD AND 4TH RELAYS ARE SPARE).
- 4 LOCATE NEW 60A/2P SECONDARY DISCONNECT SWITCH C/W 150A/3P A/C CONTACTOR AND TIME CLOCK AND REPLACE WITH NEW PANEL AND RELAY PANEL AS INDICATED.

NOTE: DO NOT DISCONNECT EXISTING LIGHTING OR CONTROLS UNTIL NEW LIGHTING AND CONTROLS ARE COMPLETE AND FUNCTIONING. ALL LIGHTING TO BE FUNCTIONAL AT END OF EACH WORK DAY.



KEY PLAN



GOODKEY WEEDMARK & ASSOCIATES LIMITED
1688 Woodward Dr.
613 727-5115 Voice
613 727-5115 Fax
www.gwec.com Web
GWA# 2013-171



revision	01	ISSUED FOR BID	2014/01/16	date
Verify all dimensions and conditions on site and immediately notify the engineer of all discrepancies.				

Project title
WORKWORTH CORRECTIONAL SERVICE CANADA
WORKWORTH INSTITUTION
15847 COUNTRY ROAD 29, CAMBELLFORD
LIGHTING ENHANCEMENT
INNER PERIMETER

drawing title
FLOOR PLANS –
BUILDING 02, 04 & 27

drawn by dessiné par	F. SALAH
designed by conçu par	W. NEEDHAM
approved by approuvé par	M. FONTIJN
submitted soumis	K. HAQUE
project date date du projet	2013-08-30
project no. no. du projet	R.060989.001
drawing no. dessiné no.	E7 OF 11