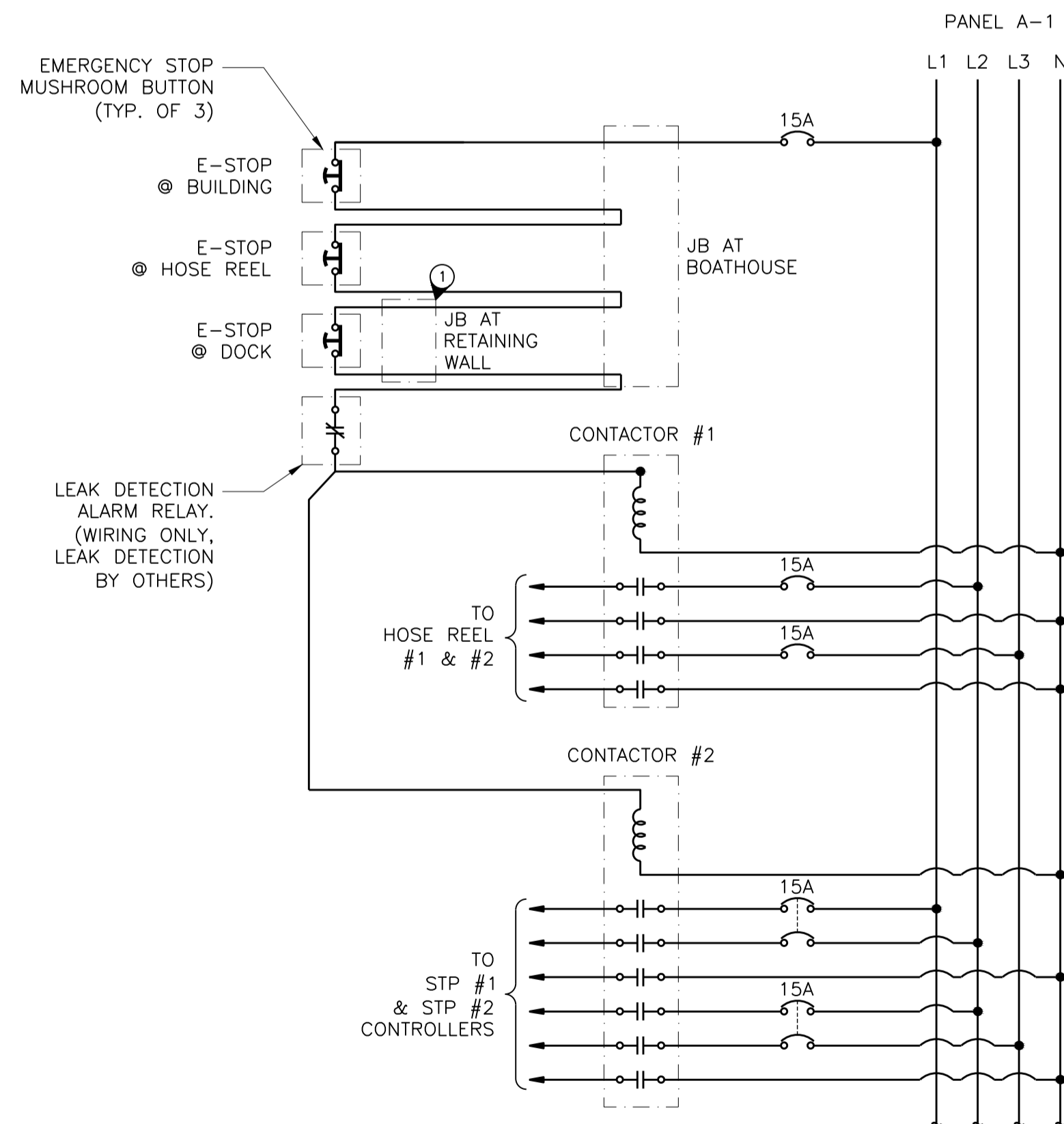
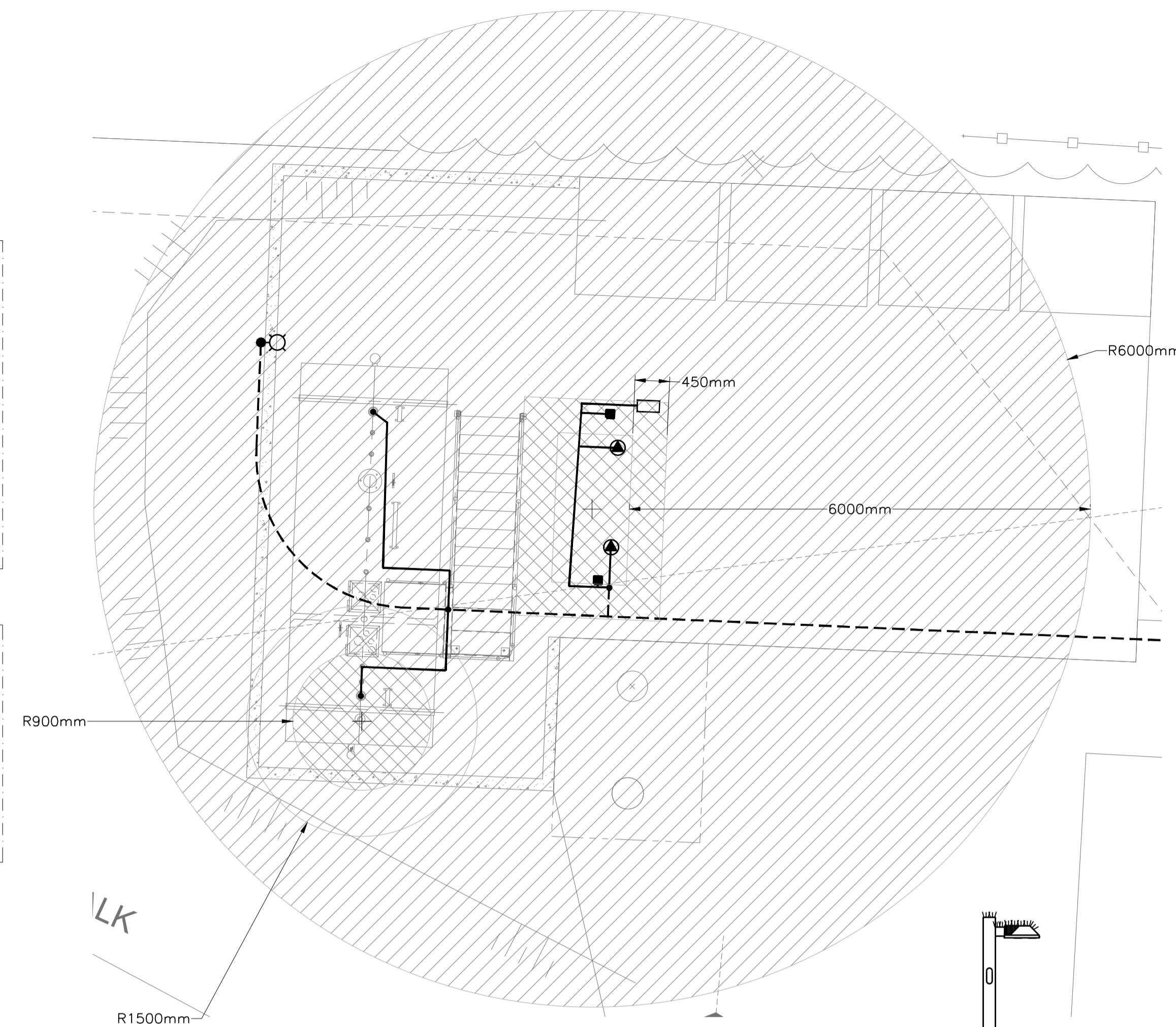


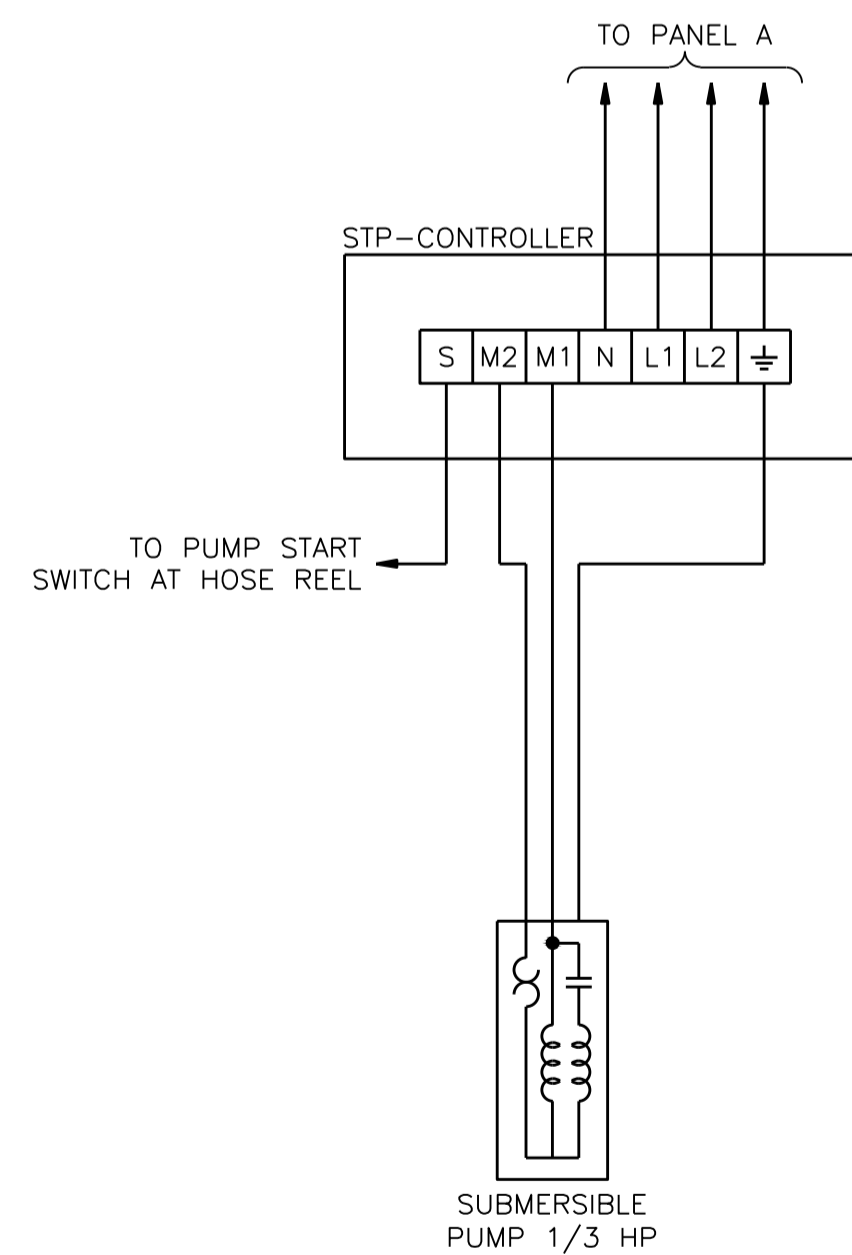
1 SINGLE LINE DIAGRAM
N.T.S.



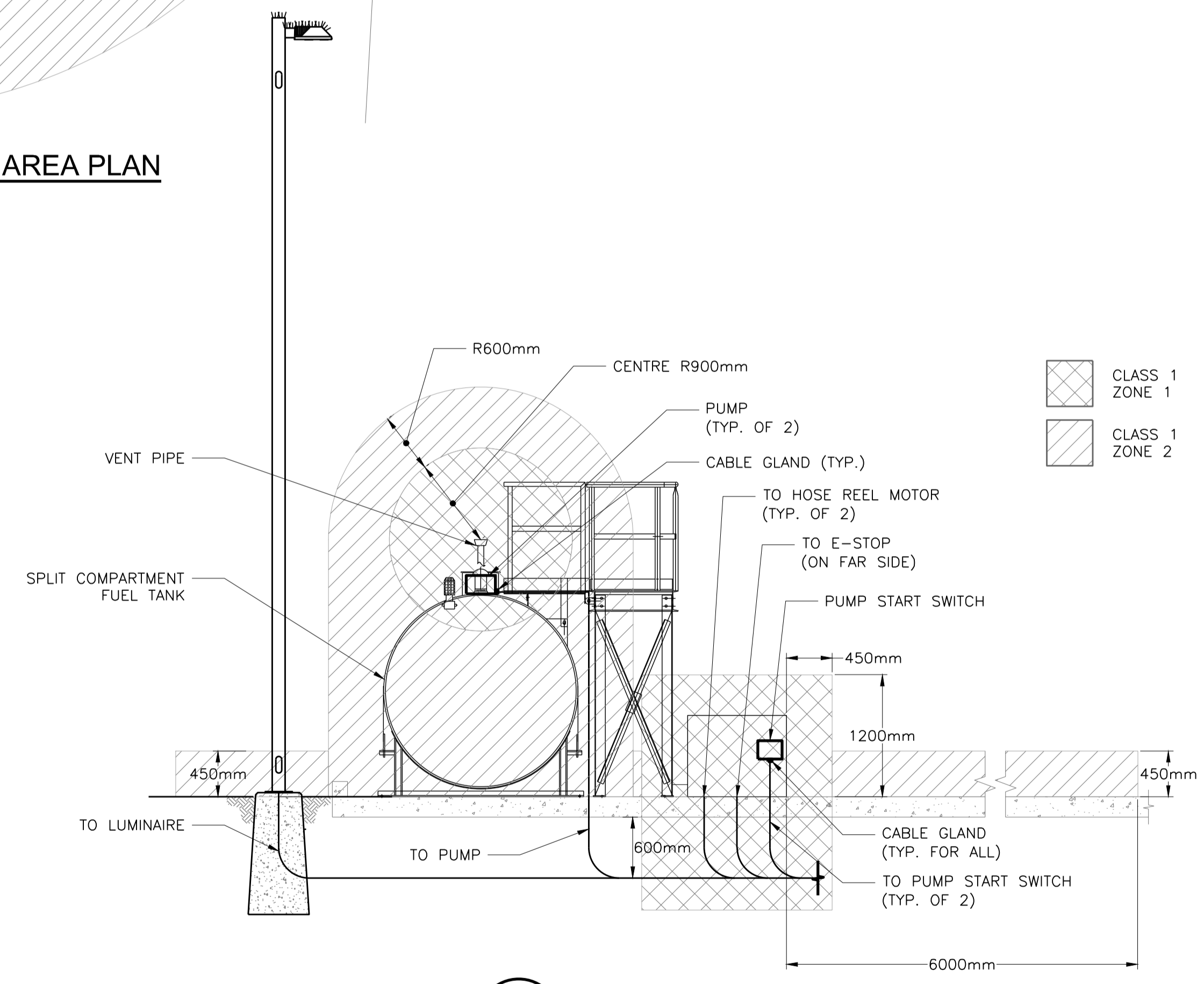
3 WIRING DIAGRAM EMERGENCY STOP
N.T.S.



2 HAZARDOUS AREA PLAN
N.T.S.



4 TYPICAL WIRING DIAGRAM SUBMERSIBLE TURBINE PUMP CONTROLLER
N.T.S.



5 HAZARDOUS AREA - TANK
N.T.S.

GENERAL NOTES:
1. CABLE GLANDS AND SEALING REQUIRED FOR ALL CONNECTIONS.
2. PROVIDE MECHANICAL PROTECTION AND STRAIN RELIEF FOR CABLES BETWEEN STUB-UPS AND DEVICES. (TYP.)

KEYNOTES:
① INSTALLATION OF TECK (FOR E-STOP AT DOCK) FROM MECHANICAL ROOM TO PVC JUNCTION BOX AT RETAINING WALL, BY OTHERS. ALL REMAINING WORK INCLUDED IN THIS CONTRACT.

CLASS 1 ZONE 1
CLASS 1 ZONE 2

CLASS 1 ZONE 1
CLASS 1 ZONE 2

F5211-130409



FISHERIES AND OCEANS CANADA
REAL PROPERTY AND SAFETY AND SECURITY

BAMFIELD LIFEBOAT STATION

SINGLE LINE DIAGRAMS

SCALE
AS NOTED
START DATE
7/31/2013
DRAWING NUMBER
E-02

3



GENIVAR

SUITE 400, 401 GARBALLY ROAD
VICTORIA (BRITISH COLUMBIA)
CANADA V8T 5M3
PHONE: 250-384-5510 FAX: 250-386-2844
WWW.GENIVAR.COM

NO.	DATE	REVISIONS
3	2014/02/07	RE-ISSUED FOR CONSTRUCTION
2	2013/10/08	ISSUED FOR CONSTRUCTION
1	2013/09/17	ISSUED FOR CLIENT REVIEW

DESIGNED JM
DRAWN SG/PP
CHECKED
RECOMMENDED
APPROVED

DWG. NO.	DRAWING REFERENCES	NOTES