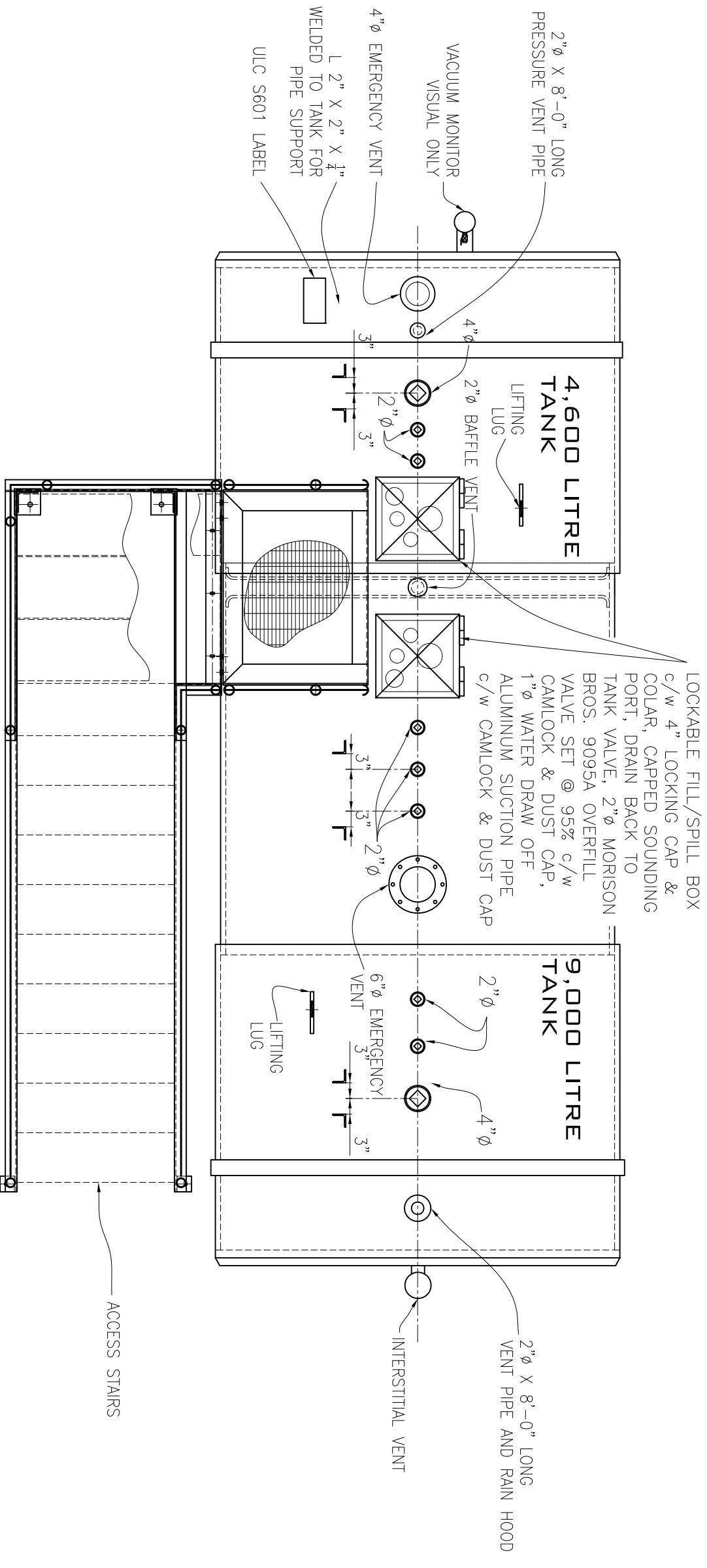


B	SEP 16, 2013	SEISMIC BOLTS & PIPE SUPPORT	JM	TB
A	SEP 11, 2013	CHANGES AS PER REQUEST	JM	TB
0	SEP 04, 2013	FOR APPROVAL	JM	TB
REV	DATE	DESCRIPTION	DRAWN BY	APPROVED BY

		FISHERIES & OCEANS		P.O. # F1700-13082 BANFIELD	TANK # 4890
TITLE: END VIEW					
FOR: 13,600 L (SPLIT 34%/66%) DWMM TANK (ULC S601)	FILE: 02 \ 4890	SEP 16, 2013	SCALE: 1/2" = 1'-0"	DWG # 4890-02	REV B
REGAL TANKS LTD. MFG. BY TIDY STEEL-FAB LTD. PHONE (604) 793-9734 FAX (604) 792-1880					



REV	DATE	DESCRIPTION	DRAWN BY	APPROVED BY
B	SEP 16, 2013	SEISMIC BOLTS & PIPE SUPPORT	JM	TB
A	SEP 11, 2013	CHANGES AS PER REQUEST	JM	TB
0	SEP 04, 2013	FOR APPROVAL	JM	TB

CUSTOMER: FISHERIES & OCEANS		P.O. # F100-130682 BWHFD	TANK # 4890
TITLE: TOP VIEW			
FOR: 13,600 L (SPLIT 34%/66%) DWVM TANK (ULC S601)	FILE: 02 \ 4890	SEP 16, 2013	SCALE: 1/2" = 1'-0"
REGAL TANKS LTD. MFG. BY TIDY STEEL-FAB LTD.		DWG# 4890-03	REV B
PHONE (604) 793-9734 FAX (604) 792-1880			

